

ANNUAL STATEMENT

OF THE

San Diego Insurance Company

of **San Diego**

in the state of **California**

TO THE

Insurance Department

OF THE

STATE OF

**FOR THE YEAR ENDED
December 31, 2004**

PROPERTY AND CASUALTY

2004



10837200420100100

ANNUAL STATEMENT

For the Year Ended December 31, 2004
OF THE CONDITION AND AFFAIRS OF THE

San Diego Insurance Company

NAIC Group Code 0111 0111 **NAIC Company Code** 10837 **Employer's ID Number** 33-0763208
 (Current Period) (Prior Period)

Organized under the Laws of California, **State of Domicile or Port of Entry** California

Country of Domicile United States of America

Incorporated: July 19, 1997 **Commenced Business:** August 22, 1997

Statutory Home Office: 525 B Street San Diego, CA 92101

Main Administrative Office: 525 B Street San Diego, CA 92101 619-744-6000

Mail Address: 525 B Street San Diego, CA 92101

Primary Location of Books and Records: 175 Berkeley Street Boston, MA 02117 617-357-9500

Internet Website Address: www.goldeneagle-ins.com

Statutory Statement Contact: Steven Latham 617-357-9500 43660
Steven.Latham@LibertyMutual.com 617-574-5955
 (E-Mail Address) (Fax Number)

Policyowner Relations Contact: 525 B Street San Diego, CA 92101 619-744-6000

OFFICERS
Chairman of the Board
Roger Lucien Jean

Name	Title
1. <u>Francis John Kotarba</u>	<u>President & Chief Executive Officer</u>
2. <u>Timothy Ray Lickness</u>	<u>Secretary</u>
3. <u>Steven Nelson Martin</u>	<u>Treasurer</u>

Vice-Presidents

Name	Title	Name	Title
<u>Mark Edward Fiebrink</u>	<u>Executive Vice President</u>		

DIRECTORS OR TRUSTEES

<u>Roger Lucien Jean</u>	<u>John Derek Doyle</u>	<u>James Francis Dore</u>	<u>Mark Edward Fiebrink</u>
<u>Francis John Kotarba</u>	<u>Christopher Charles Mansfield</u>		

State of Massachusetts
County of Suffolk ss

The officers of this reporting entity being duly sworn, each depose and say that they are the described officers of said reporting entity, and that on the reporting period stated above, all of the herein described assets were the absolute property of the said reporting entity, free and clear from any liens or claims thereon, except as herein stated, and that this statement, together with related exhibits, schedules and explanations therein contained, annexed or referred to, is a full and true statement of all the assets and liabilities and of the condition and affairs of the said reporting entity as of the reporting period stated above, and of its income and deductions therefrom for the period ended, and have been completed in accordance with the NAIC Annual Statement Instructions and Accounting Practices and Procedures manual except to the extent that: (1) state law may differ; or, (2) that state rules or regulations require differences in reporting not related to accounting practices and procedures, according to the best of their information, knowledge and belief, respectively. Furthermore, the scope of this attestation by the described officers also includes the related corresponding electronic filing with the NAIC, when required, that is an exact copy (except for formatting differences due to electronic filing) of the enclosed statement. The electronic filing may be requested by various regulators in lieu of or in addition to the enclosed statement.

_____ (Signature) Francis John Kotarba (Printed Name) 1. President & Chief Executive Officer (Title)	_____ (Signature) Timothy Ray Lickness (Printed Name) 2. Secretary (Title)	_____ (Signature) Steven Nelson Martin (Printed Name) 3. Treasurer (Title)
--	--	--

Subscribed and sworn to before me this _____ day of February, 2005

a. Is this an original filing? YES [X] NO []

b. If no: 1. State the amendment number _____
2. Date filed _____
3. Number of pages attached _____

ASSETS

	Current Year			Prior Year
	1 Assets	2 Nonadmitted Assets	3 Net Admitted Assets (Cols. 1 - 2)	4 Net Admitted Assets
1. Bonds (Schedule D)	25,609,196		25,609,196	45,525,495
2. Stocks (Schedule D):				
2.1 Preferred stocks				
2.2 Common stocks	184,589		184,589	
3. Mortgage loans on real estate (Schedule B):				
3.1 First liens				
3.2 Other than first liens				
4. Real estate (Schedule A):				
4.1 Properties occupied by the company (less \$ 0 encumbrances)				
4.2 Properties held for the production of income (less \$ 0 encumbrances)				
4.3 Properties held for sale (less \$ 0 encumbrances)				
5. Cash (\$ 860,161, Schedule E-Part 1), cash equivalents (\$ 0, Schedule E-Part 2) and short-term investments (\$ 42,326,930, Schedule DA)	43,187,091		43,187,091	15,344,037
6. Contract loans (including \$ 0 premium notes)				
7. Other invested assets (Schedule BA)				
8. Receivable for securities	43,657		43,657	
9. Aggregate write-ins for invested assets				
10. Subtotals, cash and invested assets (Lines 1 to 9)	69,024,533		69,024,533	60,869,532
11. Investment income due and accrued	511,429		511,429	704,210
12. Premiums and considerations:				
12.1 Uncollected premiums and agents' balances in the course of collection				
12.2 Deferred premiums, agents' balances and installments booked but deferred and not yet due (including \$ 0 earned but unbilled premiums)				
12.3 Accrued retrospective premiums				
13. Reinsurance:				
13.1 Amounts recoverable from reinsurers				
13.2 Funds held by or deposited with reinsured companies				
13.3 Other amounts receivable under reinsurance contracts				
14. Amounts receivable relating to uninsured plans				
15.1 Current federal and foreign income tax recoverable and interest thereon	6,674,601		6,674,601	410,445
15.2 Net deferred tax asset				
16. Guaranty funds receivable or on deposit				
17. Electronic data processing equipment and software				
18. Furniture and equipment, including health care delivery assets (\$ 0)				
19. Net adjustment in assets and liabilities due to foreign exchange rates				
20. Receivables from parent, subsidiaries and affiliates				
21. Health care (\$ 0) and other amounts receivable				
22. Other assets nonadmitted				
23. Aggregate write-ins for other than invested assets				
24. Total assets excluding Separate Accounts, Segregated Accounts and Protected Cell Accounts (Lines 10 to 23)	76,210,563		76,210,563	61,984,187
25. From Separate Accounts, Segregated Accounts and Protected Cell Accounts				
26. Total (Lines 24 and 25)	76,210,563		76,210,563	61,984,187

DETAILS OF WRITE-INS				
0901.				
0902.				
0903.				
0998. Summary of remaining write-ins for Line 9 from overflow page				
0999. Totals (Lines 0901 through 0903 + 0998) (Line 9 above)				
2301.				
2302.				
2303.				
2398. Summary of remaining write-ins for Line 23 from overflow page				
2399. Totals (Lines 2301 through 2303 + 2398) (Line 23 above)				

LIABILITIES, SURPLUS AND OTHER FUNDS	1 Current Year	2 Prior Year
1. Losses (Part 2A, Line 34, Column 8)		
2. Reinsurance payable on paid loss and loss adjustment expenses (Schedule F, Part 1, Column 6)		
3. Loss adjustment expenses (Part 2A, Line 34, Column 9)		
4. Commissions payable, contingent commissions and other similar charges		
5. Other expenses (excluding taxes, licenses and fees)		
6. Taxes, licenses and fees (excluding federal and foreign income taxes)		
7.1 Current federal and foreign income taxes (including \$ 0 on realized capital gains (losses))		
7.2 Net deferred tax liability	21,000	38,249
8. Borrowed money \$ 0 and interest thereon \$ 0		
9. Unearned premiums (Part 1A, Line 37, Column 5) (after deducting unearned premiums for ceded reinsurance of \$ 0 and including warranty reserves of \$ 0)		
10. Advance premium		
11. Dividends declared and unpaid:		
11.1 Stockholders		
11.2 Policyholders		
12. Ceded reinsurance premiums payable (net of ceding commissions)		
13. Funds held by company under reinsurance treaties (Schedule F, Part 3, Column 19)		
14. Amounts withheld or retained by company for account of others		
15. Remittances and items not allocated		
16. Provision for reinsurance (Schedule F, Part 7)		
17. Net adjustments in assets and liabilities due to foreign exchange rates		
18. Drafts outstanding		
19. Payable to parent, subsidiaries and affiliates	1,969,940	1,042,037
20. Payable for securities		12,480
21. Liability for amounts held under uninsured accident and health plans		
22. Capital notes \$ 0 and interest thereon \$ 0		
23. Aggregate write-ins for liabilities	18,607,777	10,033,825
24. Total liabilities excluding protected cell liabilities (Lines 1 through 23)	20,598,717	11,126,591
25. Protected cell liabilities		
26. Total liabilities (Lines 24 and 25)	20,598,717	11,126,591
27. Aggregate write-ins for special surplus funds		
28. Common capital stock	2,600,000	2,600,000
29. Preferred capital stock		
30. Aggregate write-ins for other than special surplus funds		
31. Surplus notes		
32. Gross paid in and contributed surplus	52,800,000	52,800,000
33. Unassigned funds (surplus)	211,846	(4,542,404)
34. Less treasury stock, at cost:		
34.1 0 shares common (value included in Line 28 \$ 0)		
34.2 0 shares preferred (value included in Line 29 \$ 0)		
35. Surplus as regards policyholders (Lines 27 to 33, less 34) (Page 4, Line 38)	55,611,846	50,857,596
36. TOTALS (Page 2, Line 26, Col. 3)	76,210,563	61,984,187

DETAILS OF WRITE-INS		
2301. Other liabilities	905,117	35,843
2302. Collateral held for securities loaned	4,484,362	8,879,555
2303. Deposit liability	13,218,298	1,118,427
2398. Summary of remaining write-ins for Line 23 from overflow page		
2399. Totals (Lines 2301 through 2303 plus 2398) (Line 23 above)	18,607,777	10,033,825
2701.		
2702.		
2703.		
2798. Summary of remaining write-ins for Line 27 from overflow page		
2799. Totals (Lines 2701 through 2703 plus 2798) (Line 27 above)		
3001.		
3002.		
3003.		
3098. Summary of remaining write-ins for Line 30 from overflow page		
3099. Totals (Lines 3001 through 3003 plus 3098) (Line 30 above)		

UNDERWRITING AND INVESTMENT EXHIBIT STATEMENT OF INCOME	1	2
UNDERWRITING INCOME	Current Year	Prior Year
1. Premiums earned (Part 1, Line 34, Column 4)		
DEDUCTIONS		
2. Losses incurred (Part 2, Line 34, Column 7)		
3. Loss expenses incurred (Part 3, Line 25, Column 1)		
4. Other underwriting expenses incurred (Part 3, Line 25, Column 2)		
5. Aggregate write-ins for underwriting deductions		
6. Total underwriting deductions (Lines 2 through 5)		
7. Net income of protected cells		
8. Net underwriting gain (loss) (Line 1 minus Line 6 plus Line 7)		
INVESTMENT INCOME		
9. Net investment income earned (Exhibit of Net Investment Income, Line 17)	2,905,689	2,658,473
10. Net realized capital gains (losses) (Exhibit of Capital Gains (Losses))	531,239	3,232
11. Net investment gain (loss) (Lines 9 + 10)	3,436,928	2,661,705
OTHER INCOME		
12. Net gain (loss) from agents' or premium balances charged off (amount recovered \$ 0 amount charged off \$ 442,347)	442,347	
13. Finance and service charges not included in premiums		
14. Aggregate write-ins for miscellaneous income	3,246,456	(2,377,033)
15. Total other income (Lines 12 through 14)	3,688,803	(2,377,033)
16. Net income before dividends to policyholders and before federal and foreign income taxes (Lines 8 + 11 + 15)	7,125,731	284,672
17. Dividends to policyholders		
18. Net income, after dividends to policyholders but before federal and foreign income taxes (Line 16 minus Line 17)	7,125,731	284,672
19. Federal and foreign income taxes incurred	2,550,562	(6,343,280)
20. Net income (Line 18 minus Line 19) (to Line 22)	4,575,169	6,627,952
CAPITAL AND SURPLUS ACCOUNT		
21. Surplus as regards policyholders, December 31 prior year (Page 4, Line 38, Column 2)	50,857,596	44,276,610
GAINS AND (LOSSES) IN SURPLUS		
22. Net income (from Line 20)	4,575,169	6,627,952
23. Change in net unrealized capital gains or (losses)	163,755	
24. Change in net unrealized foreign exchange capital gain (loss)		
25. Change in net deferred income tax	17,249	(5,377,143)
26. Change in nonadmitted assets (Exhibit of Nonadmitted Assets, Line 26, Col. 3)		5,330,177
27. Change in provision for reinsurance (Page 3, Line 16, Column 2 minus Column 1)		
28. Change in surplus notes		
29. Surplus (contributed to) withdrawn from protected cells		
30. Cumulative effect of changes in accounting principles		
31. Capital changes:		
31.1 Paid in		
31.2 Transferred from surplus (Stock Dividend)		
31.3 Transferred to surplus		
32. Surplus adjustments:		
32.1 Paid in		
32.2 Transferred to capital (Stock Dividend)		
32.3 Transferred from capital		
33. Net remittances from or (to) Home Office		
34. Dividends to stockholders		
35. Change in treasury stock (Page 3, Lines 34.1 and 34.2, Column 2 minus Column 1)		
36. Aggregate write-ins for gains and losses in surplus	(1,923)	
37. Change in surplus as regards policyholders for the year (Lines 22 through 36)	4,754,250	6,580,986
38. Surplus as regards policyholders, December 31 current year (Lines 21 plus Line 37) (Page 3, Line 35)	55,611,846	50,857,596

DETAILS OF WRITE-INS		
0501.		
0502.		
0503.		
0598. Summary of remaining write-ins for Line 5 from overflow page		
0599. Totals (Lines 0501 through 0503 plus Line 0598) (Line 5 above)		
1401. Other income (expense)	3,246,456	(2,377,033)
1402.		
1403.		
1498. Summary of remaining write-ins for Line 14 from overflow page		
1499. Totals (Lines 1401 through 1403 plus Line 1498) (Line 14 above)	3,246,456	(2,377,033)
3601. Other miscellaneous changes to surplus	(1,923)	
3602.		
3603.		
3698. Summary of remaining write-ins for Line 36 from overflow page		
3699. Totals (Lines 3601 through 3603 plus Line 3698) (Line 36 above)	(1,923)	

CASH FLOW	1	2
Cash from Operations	Current Year	Prior Year
1. Premiums collected net of reinsurance		
2. Net investment income	3,208,064	2,828,372
3. Miscellaneous income	3,688,803	(1,553,091)
4. Total (Lines 1 through 3)	6,896,867	1,275,281
5. Benefit and loss related payments		
6. Net transfers to Separate, Segregated Accounts and Protected Cell Accounts		
7. Commissions, expenses paid and aggregate write-ins for deductions	7,539	3,591
8. Dividends paid to policyholders		
9. Federal and foreign income taxes paid (recovered) \$ 0 net of tax on capital gains (losses)	8,814,719	(5,052,708)
10. Total (Lines 5 through 9)	8,822,258	(5,049,117)
11. Net cash from operations (Line 4 minus Line 10)	(1,925,391)	6,324,398
Cash from Investments		
12. Proceeds from investments sold, matured or repaid:		
12.1 Bonds	22,813,919	5,007,854
12.2 Stocks		
12.3 Mortgage loans		
12.4 Real estate		
12.5 Other invested assets		
12.6 Net gains or (losses) on cash, cash equivalents and short-term investments		
12.7 Miscellaneous proceeds		
12.8 Total investment proceeds (Lines 12.1 to 12.7)	22,813,919	5,007,854
13. Cost of investments acquired (long-term only):		
13.1 Bonds	2,475,977	16,082,059
13.2 Stocks	20,834	
13.3 Mortgage loans		
13.4 Real estate		
13.5 Other invested assets		
13.6 Miscellaneous applications	56,137	85,920
13.7 Total investments acquired (Lines 13.1 to 13.6)	2,552,948	16,167,979
14. Net increase (decrease) in policy loans and premium notes		
15. Net cash from investments (Line 12.8 minus Line 13.7 minus Line 14)	20,260,971	(11,160,125)
Cash from Financing and Miscellaneous Sources		
16. Cash provided (applied):		
16.1 Surplus notes, capital notes		
16.2 Capital and paid in surplus, less treasury stock		
16.3 Borrowed funds		
16.4 Net deposits on deposit-type contracts and other insurance liabilities		
16.5 Dividends to stockholders		
16.6 Other cash provided (applied)	9,507,474	9,833,904
17. Net cash from financing and miscellaneous sources (Lines 16.1 to 16.4 minus Line 16.5 plus Line 16.6)	9,507,474	9,833,904
RECONCILIATION OF CASH AND SHORT-TERM INVESTMENTS		
18. Net change in cash and short-term investments (Line 11, plus Lines 15 and 17)	27,843,054	4,998,177
19. Cash and short-term investments:		
19.1 Beginning of year	15,344,037	10,345,860
19.2 End of year (Line 18 plus Line 19.1)	43,187,091	15,344,037

Note: Supplemental disclosures of cash flow information for non-cash transactions:

20.0001.		
20.0002.		
20.0003.		

NONE **Underwriting and Investment Exhibit - Part 1**

NONE **Underwriting and Investment Exhibit - Part 1A**

NONE

Underwriting and Investment Exhibit - Part 1B

NONE **Underwriting and Investment Exhibit - Part 2**

NONE Underwriting and Investment Exhibit - Part 2A

UNDERWRITING AND INVESTMENT EXHIBIT PART 3 - EXPENSES

	1 Loss Adjustment Expenses	2 Other Underwriting Expenses	3 Investment Expenses	4 Total
1. Claim adjustment services:				
1.1 Direct				
1.2 Reinsurance assumed				
1.3 Reinsurance ceded				
1.4 Net claim adjustment service (1.1 + 1.2 - 1.3)				
2. Commission and brokerage:				
2.1 Direct excluding contingent				
2.2 Reinsurance assumed excluding contingent				
2.3 Reinsurance ceded excluding contingent				
2.4 Contingent-direct				
2.5 Contingent-reinsurance assumed				
2.6 Contingent-reinsurance ceded				
2.7 Policy and membership fees				
2.8 Net commission and brokerage (2.1 + 2.2 - 2.3 + 2.4 + 2.5 - 2.6 + 2.7)				
3. Allowances to manager and agents				
4. Advertising				
5. Boards, bureaus and associations				
6. Surveys and underwriting reports				
7. Audit of assureds' records				
8. Salary and related items:				
8.1 Salaries				
8.2 Payroll taxes				
9. Employee relations and welfare				
10. Insurance				
11. Directors' fees				
12. Travel and travel items				
13. Rent and rent items				
14. Equipment				
15. Cost or depreciation of EDP equipment and software				
16. Printing and stationery				
17. Postage, telephone and telegraph, exchange and express				
18. Legal and auditing				
19. Totals (Lines 3 to 18)				
20. Taxes, licenses and fees:				
20.1 State and local insurance taxes deducting guaranty association credits of \$ 0				
20.2 Insurance department licenses and fees				
20.3 Gross guaranty association assessments				
20.4 All other (excluding federal and foreign income and real estate)				
20.5 Total taxes, licenses and fees (20.1 + 20.2 + 20.3 + 20.4)				
21. Real estate expenses				
22. Real estate taxes				
23. Reimbursements by uninsured accident and health plans				
24. Aggregate write-ins for miscellaneous expenses				
25. Total expenses incurred				(a)
26. Less unpaid expenses-current year		(11,130)		(11,130)
27. Add unpaid expenses-prior year		(3,591)		(3,591)
28. Amounts receivable relating to uninsured accident and health plans, prior year				
29. Amounts receivable relating to uninsured accident and health plans, current year				
30. TOTAL EXPENSES PAID (Lines 25 - 26 + 27 - 28 + 29)		7,539		7,539

DETAILS OF WRITE-INS				
2401.				
2402.				
2403.				
2498. Summary of remaining write-ins for Line 24 from overflow page				
2499. Totals (Lines 2401 through 2403 plus 2498) (Line 24 above)				

(a) Includes management fees of \$ 0 to affiliates and \$ 0 to non-affiliates.

EXHIBIT OF NET INVESTMENT INCOME

	1 Collected During Year	2 Earned During Year
1. U.S. Government bonds	(a) 314,977	277,170
1.1 Bonds exempt from U.S. tax	(a) 46,144	46,144
1.2 Other bonds (unaffiliated)	(a) 2,285,251	2,026,151
1.3 Bonds of affiliates	(a)	
2.1 Preferred stocks (unaffiliated)	(b)	
2.11 Preferred stocks of affiliates	(b)	
2.2 Common stocks (unaffiliated)	13,386	44,552
2.21 Common stocks of affiliates		
3. Mortgage loans	(c)	
4. Real estate	(d)	
5. Contract loans		
6. Cash, cash equivalents and short-term investments	(e) 410,370	483,329
7. Derivative instruments	(f)	
8. Other invested assets		
9. Aggregate write-ins for investment income	28,343	28,343
10. Total gross investment income	3,098,471	2,905,689
11. Investment expenses		(g)
12. Investment taxes, licenses and fees, excluding federal income taxes		(g)
13. Interest expense		(h)
14. Depreciation on real estate and other invested assets		(i)
15. Aggregate write-ins for deductions from investment income		
16. Total deductions (Lines 11 through 15)		
17. Net investment income (Line 10 minus Line 16)		2,905,689
DETAILS OF WRITE-INS		
0901. MISCELLANEOUS INCOME / (EXPENSE)	28,343	28,343
0902.		
0903.		
0998. Summary of remaining write-ins for Line 9 from overflow page		
0999. Totals (Lines 0901 through 0903) plus 0998 (Line 9, above)	28,343	28,343
1501.		
1502.		
1503.		
1598. Summary of remaining write-ins for Line 15 from overflow page		
1599. Totals (Lines 1501 through 1503) plus 1598 (Line 15, above)		

- (a) Includes \$ 31,923 accrual of discount less \$ 141,517 amortization of premium and less \$ 8,805 paid for accrued interest on purchases.
- (b) Includes \$ 0 accrual of discount less \$ 0 amortization of premium and less \$ 0 paid for accrued dividends on purchases.
- (c) Includes \$ 0 accrual of discount less \$ 0 amortization of premium and less \$ 0 paid for accrued interest on purchases.
- (d) Includes \$ 0 for company's occupancy of its own buildings; and excludes \$ 0 interest on encumbrances.
- (e) Includes \$ 1,849 accrual of discount less \$ 0 amortization of premium and less \$ 0 paid for accrued interest on purchases.
- (f) Includes \$ 0 accrual of discount less \$ 0 amortization of premium.
- (g) Includes \$ 0 investment expenses and \$ 0 investment taxes, licenses and fees, excluding federal income taxes, attributable to segregated and Separate Accounts.
- (h) Includes \$ 0 depreciation on real estate and \$ 0 depreciation on other invested assets.
- (i) Includes \$ 0 depreciation on real estate and \$ 0 depreciation on other invested assets.

EXHIBIT OF CAPITAL GAINS (LOSSES)

	1 Realized Gain (Loss) On Sales or Maturity	2 Other Realized Adjustments	3 Increases (Decreases) by Adjustment	4 Total
1. U.S. Government bonds	230,363			230,363
1.1 Bonds exempt from U.S. tax				
1.2 Other bonds (unaffiliated)	300,876			300,876
1.3 Bonds of affiliates				
2.1 Preferred stocks (unaffiliated)				
2.11 Preferred stocks of affiliates				
2.2 Common stocks (unaffiliated)			163,755	163,755
2.21 Common stocks of affiliates				
3. Mortgage loans				
4. Real estate				
5. Contract loans				
6. Cash, cash equivalents and short-term investments				
7. Derivative instruments				
8. Other invested assets				
9. Aggregate write-ins for capital gains (losses)				
10. Total capital gains (losses)	531,239		163,755	694,994

DETAILS OF WRITE-INS				
0901.				
0902.				
0903.				
0998. Summary of remaining write-ins for Line 9 from overflow page				
0999. Totals (Lines 0901 through 0903) plus 0998 (Line 9, above)				

EXHIBIT OF NONADMITTED ASSETS

	1	2	3
	Current Year Total Nonadmitted Assets	Prior Year Total Nonadmitted Assets	Change in Total Nonadmitted Assets (Col. 2 - Col. 1)
1. Bonds (Schedule D)			
2. Stocks (Schedule D):			
2.1 Preferred stocks			
2.2 Common stocks			
3. Mortgage loans on real estate (Schedule B):			
3.1 First liens			
3.2 Other than first liens			
4. Real estate (Schedule A):			
4.1 Properties occupied by the company			
4.2 Properties held for the production of income			
4.3 Properties held for sale			
5. Cash (Schedule E-Part 1), cash equivalents (Schedule E-Part 2) and short-term investments (Schedule DA)			
6. Contract loans			
7. Other invested assets (Schedule BA)			
8. Receivable for securities			
9. Aggregate write-ins for invested assets			
10. Subtotals, cash and invested assets (Lines 1 to 9)			
11. Investment income due and accrued			
12. Premiums and considerations:			
12.1 Uncollected premiums and agents' balances in the course of collection			
12.2 Deferred premiums, agents' balances and installments booked but deferred and not yet due			
12.3 Accrued retrospective premiums			
13. Reinsurance:			
13.1 Amounts recoverable from reinsurers			
13.2 Funds held by or deposited with reinsured companies			
13.3 Other amounts receivable under reinsurance contracts			
14. Amounts receivable relating to uninsured plans			
15.1 Current federal and foreign income tax recoverable and interest thereon			
15.2 Net deferred tax asset			
16. Guaranty funds receivable or on deposit			
17. Electronic data processing equipment and software			
18. Furniture and equipment, including health care delivery assets			
19. Net adjustment in assets and liabilities due to foreign exchange rates			
20. Receivable from parent, subsidiaries and affiliates			
21. Health care and other amounts receivable			
22. Other assets nonadmitted			
23. Aggregate write-ins for other than invested assets			
24. Total assets excluding Separate Accounts, Segregated Accounts and Protected Cell Accounts (Lines 10 to 23)			
25. From Separate Accounts, Segregated Accounts and Protected Cell Accounts			
26. Total (Lines 24 and 25)			

NONE

DETAILS OF WRITE-INS			
0901.			
0902.			
0903.			
0998. Summary of remaining write-ins for Line 09 from overflow page			
0999. Totals (Lines 0901 through 0903 plus 0998) (Line 09 above)			
2301.			
2302.			
2303.			
2398. Summary of remaining write-ins for Line 23 from overflow page			
2399. Totals (Lines 2301 through 2303 plus 2398) (Line 23 above)			

NONE

NOTES TO FINANCIAL STATEMENTS

Note 1- Summary of Significant Accounting Policies

A. Accounting Practices

Effective January 1, 2001, and subject to any deviations prescribed or permitted by the California Insurance Commissioner, the accompanying financial statements of San Diego Insurance Company (the "Company") have been prepared in conformity with the National Association of Insurance Commissioners ("NAIC") *Accounting Practices and Procedures Manual* ("APP Manual").

B. Use of Estimates in the Preparation of the Financial Statements

The preparation of financial statements requires management to make estimates and assumptions that affect the reported amounts of assets, liabilities, revenues, and expenses. It also requires estimates in the disclosure of contingent assets and liabilities. Actual results could differ from these estimates.

C. Accounting Policies

Premiums are earned over the terms of the related policies and reinsurance contracts. Unearned premium reserves are established to cover the unexpired portion of premiums written. Such reserves are computed by pro-rata methods for direct business and are based on reports received from ceding companies for reinsurance assumed. Expenses incurred in connection with acquiring new insurance business, including acquisition costs such as sales commissions, are charged to operations as incurred. Expenses incurred are reduced for ceding allowances received or receivable.

In addition, the Company uses the following accounting policies:

1. Investment grade short-term investments are carried at cost adjusted where appropriate for amortization of premium or discount, or market as specified by the Purposes and Procedures Manual of the NAIC Securities Valuation Office (SVO Manual).
2. Investment grade bonds are carried at cost adjusted where appropriate for amortization of premium or discount, or market as specified by the SVO Manual.
3. Common stocks are carried at market value.
4. The Company does not own preferred stocks.
5. The Company does not own mortgage loans.
6. Mortgage-backed/asset backed securities are stated at amortized value. Prepayment assumptions for single class mortgage-backed/asset backed securities and multi-class securities were obtained from internal estimates. These assumptions are consistent with the current interest rate and economic environment. The retrospective adjustment method is used to value all single class mortgage-backed/asset-backed securities and multi-class securities. Non-investment grade mortgage-backed/asset backed securities are stated at the lower of amortized value or fair value.
7. The Company has no investments in subsidiaries.
8. The Company has no investments in joint ventures, partnerships or limited liability companies.
9. The Company has no derivative instruments.
10. The Company anticipates investment income as a factor in the premium deficiency calculation, in accordance with SSAP No. 53, *Property-Casualty Contracts - Premiums*.
11. Unpaid losses and loss adjustment expenses include an amount determined from individual case estimates and loss reports and an amount, based on past experience, for losses incurred but not reported. Such liabilities are necessarily based on assumptions and estimates, and while management believes the amount is adequate, the ultimate liability may be in excess of or less than the amount provided. The methods for making such estimates and for establishing the resulting liability are continually reviewed and follow current standards of practice. Any adjustments to the liability are reflected in the period that they are determined.
12. The Company did not change its capitalization policy in 2004.

Note 2- Accounting Changes and Correction of Errors

A. There were no material changes in accounting principles or corrections of errors during the year.

B. The Company prepares its statutory financial statements in conformity with accounting practices prescribed or permitted by the State of California. Effective January 1, 2001, the California Department of Insurance required that insurance companies domiciled in California prepare their statutory-basis financial statements in accordance with the NAIC APP Manual, effective January 1, 2001, subject to any deviations prescribed or permitted by the California Insurance Commissioner.

Note 3- Business Combinations and Goodwill

A. Statutory Purchase Method

NOTES TO FINANCIAL STATEMENTS

The Company did not enter into any statutory purchases during the year.

B. Statutory Mergers

The Company did not enter into any statutory mergers during the year.

C. Impairment Loss

Not applicable

Note 4- Discontinued Operations

The Company has no discontinued operations to report.

Note 5- Investments

A. Mortgage Loans, Including Mezzanine Real Estate Loans

The Company does not hold any mortgage loans as investments.

B. Troubled Debt Restructuring for Creditors

Not applicable

C. Reverse Mortgages

The Company has no reverse mortgages.

D. Loan-Backed Securities

1. The Company has elected to use the book value as of January 1, 1994 as the cost for applying the retrospective adjustment method to securities purchased prior to that date, where historical cash flows are not readily available.
2. Prepayment assumptions for single class and multi-class mortgages-backed/asset-backed securities were based upon 1-month historical constant prepayment rates.
3. The Company used IDSI, Bloomberg, and Lehman Index data in determining the market value of the vast majority of its loan-backed securities. A small number of securities are priced in other ways, such as contacting brokers.
4. The Company had no negative yield situations requiring a change from the retrospective to prospective method.

E. Repurchase Agreements

The Company did not enter into any repurchase agreements during the year.

F. Real Estate

The Company does not own real estate.

Note 6- Joint Ventures, Partnerships & Limited Liability Companies

A. The Company has no investments in joint ventures, partnerships, or limited liability companies.

B. The Impairments on joint ventures, partnerships and limited liability companies

Not applicable

Note 7- Investment Income

A. Accrued Investment Income

All investment income due and accrued over 90 days past due is excluded from Surplus.

B. Amounts Nonadmitted

No amounts were excluded as of December 31, 2004.

Note 8- Derivative Instruments

The Company was not a party to any derivative financial instruments during the year.

NOTES TO FINANCIAL STATEMENTS

Note 9 - Income Taxes

- A. The components of the net deferred tax assets and liabilities recognized in the Company's Assets, Liabilities, Surplus and Other Funds are as follows:

	December 31, 2004	December 31, 2003	Change
Total of gross deferred tax assets	14,899	0	14,899
Total of deferred tax liabilities	(35,899)	(38,249)	2,350
Net deferred tax asset	(21,000)	(38,249)	17,249
Net deferred tax asset non-admitted	0	0	0
Net admitted deferred tax asset	(21,000)	(38,249)	17,249

- B. The Company does not have any deferred tax liabilities described in SSAP No. 10, Income Taxes, paragraph 6d.
- C. The provisions for incurred taxes on earnings for the years ended December 31 are:

	2004	2003
Federal	2,550,562	(5,768,657)
Net operating loss benefit	0	(574,623)
Foreign	0	0
Federal and foreign income tax incurred	2,550,562	(6,343,280)

The Company's deferred tax assets and liabilities result primarily from the reversal of discount accretion on bonds, tax credit carryforwards and statutory non-admitted assets.

- D. Effective tax rates differ from the current statutory rate of 35% principally due to the effects of tax-exempt interest, revisions to prior year estimates, and changes in deferred taxes related to statutory non-admitted assets.
- E. The amount of Federal income taxes incurred and available for recoupment in the event of future losses is none from the current year and \$15,263 from the preceding year.

The Company had no net loss carryforward available to offset future net income subject to Federal income taxes.

The Company has a minimum tax credit of \$15,263 which does not expire.

- F. The Company's Federal income tax return is consolidated with the following entities:

Access Insurance Services, Co.	Liberty International Holdings, Inc.
ALM Services, Inc.	Liberty Life Assurance Company of Boston
Ambco Capital Corporation	Liberty Life Holdings, Inc.
America First Insurance Company	Liberty Lloyds of Texas Insurance Company
America First Lloyds Insurance Company	Liberty Management Services, Inc.
American Ambassador Casualty Company	Liberty Mexico Holdings, Inc.
Berkeley Management Corporation	Liberty Mutual Capital Corporation (Boston)
Bridgefield Casualty Insurance Company	Liberty Mutual Fire Insurance Company
Bridgefield Employers Insurance Company	Liberty Mutual Group Inc.
Capitol Agency, Inc. (Arizona corporation)	Liberty Mutual Holding Company, Inc.
Capitol Agency, Inc. (Ohio corporation)	Liberty Mutual Insurance Company
Capitol Agency, Inc. (Tennessee corporation)	Liberty Mutual Managed Care, Inc.
Cascade Disability Management, Inc.	Liberty Northwest Insurance Corporation
Colorado Casualty Insurance Company	Liberty Personal Insurance Company
Companies Agency Insurance Services of California	Liberty RE (Bermuda) Limited
Companies Agency of Alabama, Inc.	Liberty Real Estate Corporation
Companies Agency of Georgia, Inc.	Liberty Surplus Insurance Corporation
Companies Agency of Kentucky, Inc.	Liberty-USA Corporation
Companies Agency of Massachusetts, Inc.	LIH-Re of America Corporation
Companies Agency of Michigan, Inc.	LIH U.S. P&C Corporation
Companies Agency of New York, Inc.	LIIA Insurance Agency, Inc.
Companies Agency of Pennsylvania, Inc.	LIU Specialty Agency, Inc.
Companies Agency of Phoenix, Inc.	LLS Insurance Agency of Nevada, Inc.
Companies Agency, Inc.	LM Insurance Corporation
Companies Annuity Agency of Texas, Inc.	LMHC Massachusetts Holding, Inc.
Consolidated Insurance Company	LRE Properties, Inc.
Copley Venture Capital, Inc.	Mid-American Agency, Inc.
Countrywide Services Corporation	Mid-American Fire and Casualty Company
Diversified Settlements, Inc.	Missouri Agency, Inc.
Employers Insurance Company of Wausau	North Pacific Insurance Company
Excelsior Insurance Company	Oregon Automobile Insurance Company
First State Agency, Inc.	Peerless Indemnity Insurance Company
Florida State Agency, Inc.	Peerless Insurance Company
Globe American Casualty Company	LM Personal Insurance Company
Golden Eagle Insurance Corporation	LM General Insurance Company
Gulf States AIF, Inc.	LM Property and Casualty Insurance Company
Hawkeye-Security Insurance Company	San Diego Insurance Company
Helmsman Insurance Agency of Illinois, Inc.	State Agency, Inc. (Indiana corporation)
Helmsman Insurance Agency of Texas, Inc.	State Agency, Inc. (Wisconsin corporation)
Heritage-Summit Healthcare of Florida, Inc.	St. James Insurance Company
Indiana Insurance Company	Summit Consulting, Inc.

NOTES TO FINANCIAL STATEMENTS

LEXCO Limited	Summit Consulting, Inc. of Louisiana
Liberty Assignment Corporation	Summit Holding Southeast, Inc.
Liberty Corporate Services, Inc.	The First Liberty Insurance Corporation
Liberty Energy Corporation	The Midwestern Indemnity Company
Liberty Financial Services, Inc.	The National Corporation
Liberty Hospitality Group, Inc.	The Netherlands Insurance Company
Liberty Insurance Company of America	Wausau (Bermuda) Ltd.
Liberty Insurance Corporation	Wausau Business Insurance Company
Liberty Insurance Holdings, Inc.	Wausau General Insurance Company
Liberty Insurance Underwriters, Inc.	Wausau Holdings, Inc.
Liberty International Aberdeen, Inc.	Wausau Service Corporation
Liberty International Asia Pacific Holdings, Inc.	Wausau Underwriters Insurance Company

*This company joined the consolidated group in 2004 and its activity from the date it joined the group is included in the consolidated return.

The method of federal income tax allocation is subject to a written agreement. Allocation is based upon separate return calculations with credit applied for losses as appropriate. The Company has the enforceable right to recoup prior year payments in the event of future losses.

Note 10- Information concerning Parent, Subsidiaries and Affiliates

- A. All of the outstanding shares of common stock of the Company are held by Golden Eagle Insurance Corporation ("GEIC"). GEIC is a wholly owned subsidiary of Liberty Mutual Insurance Company (Parent), an insurance company incorporated in Massachusetts. The ultimate parent of Liberty Mutual Insurance Company is Liberty Mutual Holding Company, Inc. a Massachusetts company.
- B. All non-insurance transactions with its affiliates involved less than ½ of 1% of the total admitted assets of the reporting entity.
- C. There have been no material transactions with the company's affiliates during 2004.
- D. At December 31, 2004, the Company reported \$1,969,940 due to affiliates. In general, the terms of the intercompany arrangement require settlement at least quarterly.
- E. The Company had made no guarantees or initiated undertakings for the benefit of affiliates, which result in a material contingent exposure of the Company's or affiliates' assets or liabilities.
- F. There is a cost sharing agreement with Golden Eagle Insurance Corporation (the "Parent Company") under which the Parent Company provides the Company with services of personnel employed by the Parent Company and related overhead expenses. There is an investment services agreement with Liberty Mutual Insurance Company under which investment services are provided.
- G. The Company is part of a holding company structure as illustrated in Schedule Y Part 1.
- H. The Company does not own shares of an upstream company, either directly or indirectly.
- I. & J. The Company has no investments in subsidiary, controlled or affiliated companies.

Note 11- Debt

- A. Not applicable
- B. Not applicable

Note 12- Retirement Plans, Deferred Compensation, Postemployment Benefits and Compensated Absences and Other Postretirement Benefit Plans

The Company does not have any direct employees and therefore, does not have any direct obligations for a defined benefit plan, deferred compensation arrangements, compensated absences or other post retirement benefit plans. Services for the operation of the Company are provided under provisions of an intercompany cost-sharing arrangement as described in note 10(f).

Note 13- Capital and Surplus, Shareholders' Dividend restrictions and Quasi-Reorganizations

1. The Company has 26,000 shares authorized, issued, and outstanding as of December 31, 2004. All shares have a stated par value of \$100.
2. Preferred Stock
Not applicable
3. Dividend Restrictions
There are no dividend restrictions.
4. The maximum amount of dividends which can be paid by California-domiciled insurance companies to shareholders without prior approval of the Insurance Commissioner is the greater of (a) 10% of surplus, or (b) net income. The maximum dividend payout which may be made without prior approval in 2005 is \$5,561,185.

NOTES TO FINANCIAL STATEMENTS

4. The Company does not have restricted unassigned surplus.
5. The Company had no advances to surplus.
6. The Company does not hold stock for special purposes.
7. The Company does not hold special surplus funds.
8. The portion of unassigned funds (surplus) represented or reduced by each item below is as follows:

	Cumulative Increase (Decrease) in Surplus	Current Year Increase (Decrease) in Surplus
a. Unrealized gains/(losses)	\$163,755	\$163,755
b. Nonadmitted asset values	0	1,923
c. Provision for reinsurance	0	0
Total	\$163,755	\$161,832

9. Surplus Notes

Not applicable

10. Quasi re-organization (dollar impact)

Not applicable

11. Quasi re-organization (effective date)

Not applicable

Note 14- Contingencies

- A. Contingent Commitments

The Company has no commitments or contingent commitments to affiliates or other entities as indicated in Note 10E, the Company has made no guarantees on behalf of affiliates.

- B. Assessments

Not applicable

- C. Gain Contingencies

Not applicable

- D. All other Contingencies

Lawsuits arise against the Company in the normal course of business. Contingent liabilities arising from litigation, income taxes, and other matters are not considered material in relation to the financial position of the Company.

Note 15- Leases

- A. The Company is not involved in material lease obligations.

- B. Leasing as a significant part of lessor's business activities

Not applicable

Note 16- Information About Financial Instruments with Off-Balance Sheet Risk and Financial Instruments with Concentrations of Credit Risk

The Company is not exposed to financial instruments with off-balance sheet risk or with concentrations of credit risk.

Note 17- Sale, Transfer and Servicing of Financial Assets and Extinguishments of Liabilities

- A. Transfers of Receivables reported as sales:

The Company did not have any transfers of receivables reported as sales during the year.

- B. Transfers and servicing of financial assets:

The Company participates in Securities lending. Securities are loaned to approved broker/dealers and banks in exchange for acceptable collateral. The assumption for the fair value of such assets is amortized cost. The collateral policy requires 102% of the market value of the loans at inception, plus accrued interest for fixed income assets. Under the lending program, collateral requirements are determined on a daily basis by the Lending Agent in respect to the market value of the borrowed security that has been loaned. The Lending Agent is responsible for ensuring that any deficiency in collateral is cured by the close of trading on the next Business Day. Upon notification, any securities loan may be terminated at will by the Company and the Borrowed Securities returned to the Company's custodian accounts. In case of any default by a Borrower, the Lending Agent is required to return the Borrowed Securities and is liable for any difference that may exist at

NOTES TO FINANCIAL STATEMENTS

the time of default between the value of the cash collateral and the market value of Borrowed Securities. At December 31, 2004, the total market value of fixed maturities loaned was \$5,400,000, with corresponding collateral value at \$5,500,000.

C. Wash Sales

The Company did not have any wash sales transactions during the year.

Note 18-Gain or Loss from Uninsured Accident and Health Plans and the Uninsured Portion of Partially Insured Plans

A. Administrative Services Only (ASO) Plans

Not applicable

B. Administrative Services Contract (ASC) Plans

Not applicable

C. Medicare or Other Similarly Structured Cost Based Reimbursement Contracts

Not applicable

Note 19- Direct Premium Written/Produced by Managing General Agents/ Third Party Administrators

The Company has no direct premiums written through managing general agents or third party administrators.

Note 20 – September 11 Events

The Company has no exposure to losses arising from the September 11, 2001 World Trade Center disaster.

Note 21- Other Items

A. The Company has no extraordinary items to report.

B. Troubled Debt Restructuring for Debtors

Not applicable

C. Other Disclosures

1) Assets in the amount of \$429,670 and \$122,185,952 as of December 31, 2004 and 2003, respectively, were on deposit with government authorities or trustees as required by law.

D. The Company routinely assesses the collectibility of its premium receivable. Based upon Company experience, amounts in excess of non-admitted amounts are not believed to be material.

E. Business Interruption Insurance Recoveries

There were no reported losses that exceeded the policy deductible.

Note 22- Events Subsequent

There were no events subsequent to December 31, 2004 which would require disclosure.

Note 23- Reinsurance

A. Excluding amounts arising pursuant to the intercompany pooling agreement, as described in Note 26, there are no unsecured reinsurance recoverables with an individual reinsurer which exceed 3% of policyholders surplus.

B. There are no reinsurance recoverables in dispute from an individual reinsurer which exceed 5% of the Company's surplus. In addition, the aggregate reinsurance recoverables in dispute do not exceed 10% of the Company's surplus.

C. Reinsurance Assumed & Ceded

None

D. The Company did not write off any uncollectible balances in 2004.

E. The Company does not have ceded commutations.

F. The Company does not have any retroactive reinsurance agreements.

G. Reinsurance Accounted for as a Deposit

The company entered into a reinsurance agreement determined to be of a deposit type nature on August 22, 1997. Upon inception of the contract, the company recorded a deposit asset of \$1,215,000,000 and the assuming company a \$1,215,000,000 deposit liability. At the reporting date, the company had a remaining deposit balance of \$147,400,029 after taking into account additional funding from Golden Eagle Insurance Company, Trust of \$30,929,912.

NOTES TO FINANCIAL STATEMENTS

Note 24 - Retrospectively Rated Contracts and Contracts Subject to Redetermination

The Company does not have net accrued retrospective premiums.

Note 25 - Changes in Incurred Losses and Loss Adjustment Expenses

Not applicable

Note 26- Intercompany Pooling Arrangements

The Company is not a participant in an inter-company pooling agreement.

Note 27- Structured Settlements

- A. As a result of purchased annuities with the claimant as payee, The Company no longer carries reserves of \$5,576,747 after applying Inter-Company Reinsurance Agreement percentages. The Company is contingently liable should the issuers of the purchased annuities fail to perform under the terms of the annuities. The amount of unrecorded loss contingencies related to the purchased annuities was \$5,576,747 as of December 31, 2004.
- B. A summary of purchased structured settlement annuities exceeding 1% of policyholders' surplus and whereby the company has not obtained a release of liability from the claimant is as follows:

<u>Life Ins. Company and Location</u>	<u>Licensed in Company's State of Domicile Yes/No</u>	<u>Statement Value of Annuities</u>
Liberty Life Assurance Company of Boston Boston, Massachusetts	Yes	\$ 55,746,747

Note 28 - Health Care Receivables

Not applicable

Note 29 - Participating Policies

Not applicable

Note 30 - Premium Deficiency Reserves

As of December 31, 2004, the Company had no liabilities related to premium deficiency reserves. The Company considers anticipated investment income when calculating its premium deficiency reserves.

Note 31- High Dollar Deductible Policies

Not applicable

Note 32- Discounting of Liabilities for Unpaid Losses and Unpaid Loss Adjustment Expenses

Not applicable

Note 33 - Asbestos/Environmental Reserves

Not applicable

Note 34- Subscriber Savings Accounts

The Company is not a reciprocal insurance company.

Note 35 - Multiple Peril Crop Insurance

Not applicable

SUMMARY INVESTMENT SCHEDULE

Investment Categories	Gross Investment Holdings		Admitted Assets as Reported in the Annual Statement	
	1 Amount	2 Percentage	3 Amount	4 Percentage
1. Bonds:				
1.1 U.S. treasury securities	2,681,290	3.885	2,681,290	3.885
1.2 U.S. government agency and corporate obligations (excluding mortgage-backed securities):				
1.21 Issued by U.S. government agencies				
1.22 Issued by U.S. government sponsored agencies				
1.3 Foreign government (including Canada, excluding mortgage-backed securities)				
1.4 Securities issued by states, territories, and possessions and political subdivisions in the U.S.:				
1.41 States, territories and possessions general obligations				
1.42 Political subdivisions of states, territories and possessions and political subdivisions general obligations				
1.43 Revenue and assessment obligations	1,788,670	2.591	1,788,670	2.591
1.44 Industrial development and similar obligations				
1.5 Mortgage-backed securities (includes residential and commercial MBS):				
1.51 Pass-through securities:				
1.511 Issued or guaranteed by GNMA	37,961	0.055	37,961	0.055
1.512 Issued or guaranteed by FNMA and FHLMC				
1.513 All other				
1.52 CMOs and REMICs:				
1.521 Issued or guaranteed by GNMA, FNMA, FHLMC or VA	965,254	1.398	965,254	1.398
1.522 Issued by non-U.S. Government issuers and collateralized by mortgage- backed securities issued or guaranteed by agencies shown in Line 1.521				
1.523 All other				
2. Other debt and other fixed income securities (excluding short term):				
2.1 Unaffiliated domestic securities (includes credit tenant loans rated by the SVO)	20,136,021	29.172	20,136,021	29.172
2.2 Unaffiliated foreign securities				
2.3 Affiliated securities				
3. Equity interests:				
3.1 Investments in mutual funds				
3.2 Preferred stocks:				
3.21 Affiliated				
3.22 Unaffiliated				
3.3 Publicly traded equity securities (excluding preferred stocks):				
3.31 Affiliated				
3.32 Unaffiliated	184,589	0.267	184,589	0.267
3.4 Other equity securities:				
3.41 Affiliated				
3.42 Unaffiliated				
3.5 Other equity interests including tangible personal property under lease:				
3.51 Affiliated				
3.52 Unaffiliated				
4. Mortgage loans:				
4.1 Construction and land development				
4.2 Agricultural				
4.3 Single family residential properties				
4.4 Multifamily residential properties				
4.5 Commercial loans				
4.6 Mezzanine real estate loans				
5. Real estate investments:				
5.1 Property occupied by company				
5.2 Property held for production of income (includes \$ 0 of property acquired in satisfaction of debt)				
5.3 Property held for sale (\$ 0 including property acquired in satisfaction of debt)				
6. Policy loans				
7. Receivables for securities	43,657	0.063	43,657	0.063
8. Cash, cash equivalents and short-term investments	43,187,092	62.568	43,187,092	62.568
9. Other invested assets				
10. Total invested assets	69,024,534	100.000	69,024,534	100.000

GENERAL INTERROGATORIES

PART 1 - COMMON INTERROGATORIES

GENERAL

- 1.1 Is the reporting entity a member of an Insurance Holding Company System consisting of two or more affiliated persons, one or more of which is an insurer? Yes [X] No []
- 1.2 If yes, did the reporting entity register and file with its domiciliary State Insurance Commissioner, Director or Superintendent or with such regulatory official of the state of domicile of the principal insurer in the Holding Company System, a registration statement providing disclosure substantially similar to the standards adopted by the National Association of Insurance Commissioners (NAIC) in its Model Insurance Holding Company System Regulatory Act and model regulations pertaining thereto, or is the reporting entity subject to standards and disclosure requirements substantially similar to those required by such Act and regulations? Yes [X] No [] N/A []
- 1.3 State Regulating? California
- 2.1 Has any change been made during the year of this statement in the charter, by-laws, articles of incorporation, or deed of settlement of the reporting entity? Yes [] No [X]
- 2.2 If yes, date of change:
If not previously filed, furnish herewith a certified copy of the instrument as amended. _____
- 3.1 State as of what date the latest financial examination of the reporting entity was made or is being made. 12/31/1999
- 3.2 State the as of date that the latest financial examination report became available from either the state of domicile or the reporting entity. This date should be the date of the examined balance sheet and not the date the report was completed or released. 12/31/1999
- 3.3 State as of what date the latest financial examination report became available to other states or the public from either the state of domicile or the reporting entity. This is the release date or completion date of the examination report and not the date of the examination (balance sheet date). 11/19/2001
- 3.4 By what department or departments? California Department of Insurance
- 4.1 During the period covered by this statement, did any agent, broker, sales representative, non-affiliated sales/service organization or any combination thereof under common control (other than salaried employees of the reporting entity) receive credit or commissions for or control a substantial part (more than 20 percent of any major line of business measured on direct premiums) of:
- 4.11 sales of new business? Yes [] No [X]
- 4.12 renewals? Yes [] No [X]
- 4.2 During the period covered by this statement, did any sales/service organization owned in whole or in part by the reporting entity or an affiliate, receive credit or commissions for or control a substantial part (more than 20 percent of any major line of business measured on direct premiums) of:
- 4.21 sales of new business? Yes [] No [X]
- 4.22 renewals? Yes [] No [X]
- 5.1 Has the reporting entity been a party to a merger or consolidation during the period covered by this statement? Yes [] No [X]
- 5.2 If yes, provide the name of the entity, NAIC company code, and state of domicile (use two letter state abbreviation) for any entity that has ceased to exist as a result of the merger or consolidation.

1 Name of Entity	2 NAIC Company Code	3 State of Domicile

- 6.1 Has the reporting entity had any Certificates of Authority, licenses or registrations (including corporate registration, if applicable) suspended or revoked by any governmental entity during the reporting period? (You need not report an action either formal or informal, if a confidentiality clause is part of the agreement.) Yes [] No [X]
- 6.2 If yes, give full information _____
- 7.1 Does any foreign (non-United States) person or entity directly or indirectly control 10% or more of the reporting entity? Yes [] No [X]
- 7.2 If yes,
- 7.21 State the percentage of foreign control 0 %
- 7.22 State the nationality(s) of the foreign person(s) or entity(s); or if the entity is a mutual or reciprocal, the nationality of its manager or attorney-in-fact and identify the type of entity(s) (e.g., individual, corporation, government, manager or attorney-in-fact).

1 Nationality	2 Type of Entity

GENERAL INTERROGATORIES

- 8.1 Is the company a subsidiary of a bank holding company regulated by the Federal Reserve Board? Yes [] No [X]
 8.2 If response to 8.1 is yes, please identify the name of the bank holding company.

- 8.3 Is the company affiliated with one or more banks, thrifts or securities firms? Yes [] No [X]
 8.4 If response to 8.3 is yes, please provide the names and location (city and state of the main office) of any affiliates regulated by a federal financial regulatory services agency [i.e. the Federal Reserve Board (FRB), the Office of the Comptroller of the Currency (OCC), the Office of Thrift Supervision (OTS), the Federal Deposit Insurance Corporation (FDIC) and the Securities Exchange Commission (SEC)] and identify the affiliate's primary federal regulator.

1 Affiliate Name	2 Location (City, State)	3 FRB	4 OCC	5 OTS	6 FDIC	7 SEC
		NO	NO	NO	NO	NO
		NO	NO	NO	NO	NO
		NO	NO	NO	NO	NO
		NO	NO	NO	NO	NO
		NO	NO	NO	NO	NO
		NO	NO	NO	NO	NO
		NO	NO	NO	NO	NO
		NO	NO	NO	NO	NO
		NO	NO	NO	NO	NO
		NO	NO	NO	NO	NO
		NO	NO	NO	NO	NO

9. What is the name and address of the independent certified public accountant or accounting firm retained to conduct the annual audit?
 Ernst & Young, L.L.P.
 725 South Figueroa Street, Los Angeles, CA 90017
10. What is the name, address and affiliation (officer/employee of the reporting entity or actuary/consultant associated with a(n) actuarial consulting firm) of the individual providing the statement of actuarial opinion/certification? William M. Finn, FCAS, MAAA, VP and Senior Actuary
 62 Maple Avenue, Keene, NH 03431
 Liberty Regional Agency Markets

11. FOR UNITED STATES BRANCHES OF ALIEN REPORTING ENTITIES ONLY:

- 11.1 What changes have been made during the year in the United States manager or the United States trustees of the reporting entity?

- 11.2 Does this statement contain all business transacted for the reporting entity through its United States Branch on risks wherever located? Yes [] No [X]
 11.3 Have there been any changes made to any of the trust indentures during the year? Yes [] No [X]
 11.4 If answer to (11.3) is yes, has the domiciliary or entry state approved the changes? Yes [] No [] N/A [X]

BOARD OF DIRECTORS

12. Is the purchase or sale of all investments of the reporting entity passed upon either by the board of directors or a subordinate committee thereof? Yes [X] No []
 13. Does the reporting entity keep a complete permanent record of the proceedings of its board of directors and all subordinate committees thereof? Yes [X] No []
 14. Has the reporting entity an established procedure for disclosure to its board of directors or trustees of any material interest or affiliation on the part of any of its officers, directors, trustees or responsible employees which is in or is likely to conflict with the official duties of such person? Yes [X] No []

FINANCIAL

- 15.1 Total amount loaned during the year (inclusive of Separate Accounts, exclusive of policy loans):
 15.11 To directors or other officers \$ _____
 15.12 To stockholders not officers \$ _____
 15.13 Trustees, supreme or grand (Fraternal only) \$ _____
- 15.2 Total amount of loans outstanding at the end of year (inclusive of Separate Accounts, exclusive of policy loans):
 15.21 To directors or other officers \$ _____
 15.22 To stockholders not officers \$ _____
 15.23 Trustees, supreme or grand (Fraternal only) \$ _____
- 16.1 Were any assets reported in this statement subject to a contractual obligation to transfer to another party without the liability for such obligation being reported in the statement? Yes [] No [X]
 16.2 If yes, state the amount thereof at December 31 of the current year:
 16.21 Rented from others \$ _____
 16.22 Borrowed from others \$ _____
 16.23 Leased from others \$ _____
 16.24 Other \$ _____
- Disclose in Notes to Financial the nature of each obligation.
- 17.1 Does this statement include payments for assessments as described in the Annual Statement Instructions other than guaranty fund or guaranty association assessments? Yes [] No [X]
 17.2 If answer is yes:
 17.21 Amount paid as losses or risk adjustment \$ _____
 17.22 Amount paid as expenses \$ _____
 17.23 Other amounts paid \$ _____

GENERAL INTERROGATORIES

INVESTMENT

18. List the following capital stock information for the reporting entity:

Class	1 Number of Shares Authorized	2 Number of Shares Outstanding	3 Par Value Per Share	4 Redemption Price If Callable	5 Is Dividend Rate Limited?	6 Are Dividends Cumulative?
Preferred					Yes [] No [X]	Yes [] No [X]
Common	100,000	100,000	100	X X X	X X X X X X	X X X X X X

19.1 Were all the stocks, bonds and other securities owned December 31 of current year, over which the reporting entity has exclusive control, in the actual possession of the reporting entity on said date, except as shown by Schedule E - Part 3 - Special Deposits? Yes [X] No []

19.2 If no, give full and complete information, relating thereto

20.1 Were any of the stocks, bonds or other assets of the reporting entity owned at December 31 of the current year not exclusively under the control of the reporting entity, except as shown on Schedule E - Part 3 - Special Deposits, or has the reporting entity sold or transferred any assets subject to a put option contract that is currently in force? (Exclude securities subject to Interrogatory 16.1). Yes [] No [X]

20.2 If yes, state the amount thereof at December 31 of the current year:

20.21 Loaned to others	\$ _____
20.22 Subject to repurchase agreements	\$ _____
20.23 Subject to reverse repurchase agreements	\$ _____
20.24 Subject to dollar repurchase agreements	\$ _____
20.25 Subject to reverse dollar repurchase agreements	\$ _____
20.26 Pledged as collateral	\$ _____
20.27 Placed under option agreements	\$ _____
20.28 Letter stock or securities restricted as to sale	\$ _____
20.29 Other	\$ _____

20.3 For category (20.28) provide the following:

1 Nature of Restriction	2 Description	3 Amount

21.1 Does the reporting entity have any hedging transactions reported on Schedule DB? Yes [] No [X]

21.2 If yes, has a comprehensive description of the hedging program been made available to the domiciliary state? Yes [] No [] N/A [X]
 If no, attach a description with this statement.

22.1 Were any preferred stocks or bonds owned as of December 31 of the current year mandatorily convertible into equity, or, at the option of the issuer, convertible into equity? Yes [] No [X]

22.2 If yes, state the amount thereof at December 31 of the current year. \$ _____

GENERAL INTERROGATORIES

INVESTMENT

23. Excluding items in Schedule E, real estate, mortgage loans and investments held physically in the reporting entity's offices, vaults or safety deposit boxes, were all stocks, bonds and other securities, owned throughout the current year held pursuant to a custodial agreement with a qualified bank or trust company in accordance with Part 1-General, Section IV.H-Custodial or Safekeeping agreements of the NAIC Financial Condition Examiners Handbook? Yes [X] No []

23.01 For agreements that comply with the requirements of the NAIC Financial Condition Examiners Handbook, complete the following:

1 Name of Custodian(s)	2 Custodian's Address
JP Morgan Chase	3 Chase Metro Tech Center, Brooklyn, NY 11245

23.02 For all agreements that do not comply with the requirements of the NAIC Financial Condition Examiners Handbook, provide the name, location and a complete explanation:

1 Name(s)	2 Location(s)	3 Complete Explanation(s)

23.03 Have there been any changes, including name changes, in the custodian(s) identified in 23.01 during the current year? Yes [] No [X]

23.04 If yes, give full and complete information relating thereto:

1 Old Custodian	2 New Custodian	3 Date of Change	4 Reason

23.05 Identify all investment advisors, brokers/dealers or individuals acting on behalf of brokers/dealers that have access to the investment accounts, handle securities and have authority to make investments on behalf of the reporting entity:

1 Central Registration Depository Number(s)	2 Name	3 Address

24.1 Does the reporting entity have any diversified mutual funds reported in Schedule D, Part 2 (diversified according to the Securities and Exchange Commission (SEC) in the Investment Company Act of 1940 [Section 5 (b) (1)])? Yes [X] No []

24.2 If yes, complete the following schedule:

1 CUSIP#	2 Name of Mutual Fund	3 Book/Adjusted Carrying Value
683933105	OPPENHEIMER MULTI-SECTOR INC TRUST	184,589
9999999	Total	184,589

24.3 For each mutual fund listed in the table above, complete the following schedule:

1 Name of Mutual Fund (from above table)	2 Name of Significant Holding of the Mutual Fund	3 Amount of Mutual Fund's Book/Adjusted Carrying Value Attributable to the Holding	4 Date of Valuation
OPPENHEIMER MULTI-SECTO	BUNDES OBLIGATION	9,579,654	08/31/2004

GENERAL INTERROGATORIES

INVESTMENT

25. Provide the following information for all short-term and long-term bonds and all preferred stocks. Do not substitute amortized value or statement value for fair value.

	1 Statement (Admitted) Value	2 Fair Value	3 Excess of Statement over Fair Value (-), or Fair Value over Statement (+)
25.1 Bonds	67,936,126	69,237,856	1,301,730
25.2 Preferred stocks			
25.3 Totals	67,936,126	69,237,856	1,301,730

25.4 Describe the sources or methods utilized in determining the fair values: Fair values are based on quoted market prices when available. If quoted market prices are not available, fair values are based on quoted market prices of comparable instruments or values obtained from independent pricing services.

26.1 Have all the filing requirements of the Purposes and Procedures manual of the NAIC Securities Valuation Office been followed? Yes [X] No []

26.2 If no, list exceptions:

.....

.....

.....

OTHER

27.1 Amount of payments to Trade Associations, Service Organizations and Statistical or Rating Bureaus, if any? \$ _____

27.2 List the name of the organization and the amount paid if any such payment represented 25% or more of the total payments to Trade Associations, Service Organizations and Statistical or Rating Bureaus during the period covered by this statement.

1 Name	2 Amount Paid
NONE	\$
	\$
	\$
	\$
	\$

28.1 Amount of payments for legal expenses, if any? \$ _____

28.2 List the name of the firm and the amount paid if any such payment represented 25% or more of the total payments for legal expenses during the period covered by this statement.

1 Name	2 Amount Paid
NONE	\$
	\$
	\$
	\$
	\$

29.1 Amount of payments for expenditures in connection with matters before legislative bodies, officers or department of government, if any? \$ _____

29.2 List the name of the firm and the amount paid if any such payment represented 25% or more of the total payment expenditures in connection with matters before legislative bodies, officers or department of government during the period covered by this statement.

1 Name	2 Amount Paid
NONE	\$
	\$
	\$
	\$
	\$

GENERAL INTERROGATORIES

PART 2 - PROPERTY & CASUALTY INTERROGATORIES

1.1 Does the reporting entity have any direct Medicare Supplement Insurance in force? YES [] NO [X]
 1.2 If yes, indicate premium earned on U. S. business only. \$ _____
 1.3 What portion of Item (1.2) is not reported on the Medicare Supplement Insurance Experience Exhibit? \$ _____
 1.31 Reason for excluding _____

1.4 Indicate amount of earned premium attributable to Canadian and/or Other Alien not included in Item (1.2) above. \$ _____
 1.5 Indicate total incurred claims on all Medicare Supplement insurance. \$ _____

1.6 Individual policies:
 Most current three years:
 1.61 Total premium earned \$ _____
 1.62 Total incurred claims \$ _____
 1.63 Number of covered lives \$ _____
 All years prior to most current three years:
 1.64 Total premium earned \$ _____
 1.65 Total incurred claims \$ _____
 1.66 Number of covered lives \$ _____

1.7 Group policies:
 Most current three years:
 1.71 Total premium earned \$ _____
 1.72 Total incurred claims \$ _____
 1.73 Number of covered lives \$ _____
 All years prior to most current three years:
 1.74 Total premium earned \$ _____
 1.75 Total incurred claims \$ _____
 1.76 Number of covered lives \$ _____

2. Health Test:

	1	2
	Current Year	Prior Year
2.1 Premium Numerator	\$ _____	\$ _____
2.2 Premium Denominator	\$ _____	\$ _____
2.3 Premium Ratio (2.1/2.2)	_____	_____
2.4 Reserve Numerator	\$ _____	\$ _____
2.5 Reserve Denominator	\$ _____	\$ _____
2.6 Reserve Ratio (2.4/2.5)	_____	_____

3.1 Does the reporting entity issue both participating and non-participating policies? YES [] NO [X]
 3.2 If yes, state the amount of calendar year premiums written on:
 3.21 Participating policies \$ _____
 3.22 Non-participating policies \$ _____

4. For Mutual Reporting Entities and Reciprocal Exchange only:
 4.1 Does the reporting entity issue assessable policies? YES [] NO [X]
 4.2 Does the reporting entity issue non-assessable policies? YES [] NO [X]
 4.3 If assessable policies are issued, what is the extent of the contingent liability of the policyholders? _____ %
 4.4 Total amount of assessments paid or ordered to be paid during the year on deposit notes or contingent premiums. \$ _____

For Reciprocal Exchanges Only:
 5.1 Does the exchange appoint local agents? YES [] NO [X]
 5.2 If yes, is the commission paid:
 5.21 Out of Attorney's-in-fact compensation YES [] NO [] N/A [X]
 5.22 As a direct expense of the exchange YES [] NO [] N/A [X]

5.3 What expenses of the Exchange are not paid out of the compensation of the Attorney-in-fact? _____

 5.4 Has any Attorney-in-fact compensation, contingent on fulfillment of certain conditions, been deferred? YES [] NO [X]
 5.5 If yes, give full information _____

GENERAL INTERROGATORIES
(Continued)

PART 2 - PROPERTY & CASUALTY INTERROGATORIES

- 6.1 What provision has this reporting entity made to protect itself from an excessive loss in the event of a catastrophe under a workers' compensation contract issued without limit of loss: The Company does not write Workers' Compensation Insurance.
- 6.2 Describe the method used to estimate this reporting entity's probable maximum insurance loss, and identify the type of insured exposures comprising that probable maximum loss, the locations of concentrations of those exposures and the external resources (such as consulting firms or computer software models), if any, used in the estimation process: This does not apply. See Note 23G.
- 6.3 What provision has this reporting entity made (such as a catastrophic reinsurance program) to protect itself from an excessive loss arising from the types and concentrations of insured exposures comprising its probable maximum property insurance loss? This does not apply. See Note 23G.
- 6.4 Does the reporting entity carry catastrophe reinsurance protection for at least one reinstatement, in an amount sufficient to cover its estimated probable maximum loss attributable to a single loss event or occurrence? YES [] NO [X]
- 6.5 If no, describe any arrangements or mechanisms employed by the reporting entity to supplement its catastrophe reinsurance program or to hedge its exposure to uninsured catastrophic loss _____
- 7.1 Has the reporting entity reinsured any risk with any other entity under a quota share reinsurance contract which includes a provision which would limit the reinsurer's losses below the stated quota share percentage (e.g., a deductible, a loss ratio corridor, a loss cap, an aggregate limit or any similar provisions)? YES [] NO [X]
- 7.2 If yes, indicate the number of reinsurance contracts containing such provisions. _____
- 8.1 Has this reporting entity reinsured any risk with any other entity and agreed to release such entity from liability, in whole or in part, from any loss that may occur on this risk, or portion thereof, reinsured? YES [] NO [X]
- 8.2 If yes, give full information _____
9. If the reporting entity has assumed risks from another entity, there should be charged on account of such reinsurances a reserve equal to that which the original entity would have been required to charge had it retained the risks. Has this been done? YES [] NO [] N/A [X]
- 10.1 Has the reporting entity guaranteed policies issued by any other entity and now in force? YES [] NO [X]
- 10.2 If yes, give full information _____
- 11.1 If the reporting entity recorded accrued retrospective premiums on insurance contracts on Line 12.3 of the asset schedule, Page 2, state the amount of corresponding liabilities recorded for:
- | | | |
|--|---|----------|
| | 11.11 Unpaid losses | \$ _____ |
| | 11.12 Unpaid underwriting expenses (including loss adjustment expenses) | \$ _____ |
- 11.2 Of the amount on Line 12.3 of the asset schedule, Page 2, state the amount which is secured by letters of credit, collateral and other funds? \$ _____
- 11.3 If the reporting entity underwrites commercial insurance risks, such as workers' compensation, are premium or promissory notes accepted from its insureds covering unpaid premiums and/or unpaid losses? YES [] NO [] N/A [X]
- 11.4 If yes, provide the range of interest rates charged under such notes during the period covered by this statement:
- | | | |
|--|------------|---------|
| | 11.41 From | _____ % |
| | 11.42 To | _____ % |
- 11.5 Are letters of credit or collateral and other funds received from insureds being utilized by the reporting entity to secure premium or promissory notes taken by a reporting entity, or to secure any of the reporting entity's reported direct unpaid loss reserves, including unpaid losses under loss deductible features of commercial policies? YES [] NO [X]
- 11.6 If yes, state the amount thereof at December 31 of current year:
- | | | |
|--|----------------------------------|----------|
| | 11.61 Letters of Credit | \$ _____ |
| | 11.62 Collateral and other funds | \$ _____ |
- 12.1 What amount of installment notes is owned and now held by the reporting entity? \$ _____
- 12.2 Have any of these notes been hypothecated, sold or used in any manner as security for money loaned within the past year? YES [] NO [X]
- 12.3 If yes, what amount? \$ _____
- 13.1 Largest net aggregate amount insured in any one risk (excluding workers' compensation): \$ _____
- 13.2 Does any reinsurance contract considered in the calculation of this amount include an aggregate limit of recovery without also including a reinstatement provision? YES [] NO [X]
- 13.3 State the number of reinsurance contracts (excluding individual facultative risk certificates, but including facultative programs, automatic facilities or facultative obligatory contracts) considered in the calculation of the amount. _____

GENERAL INTERROGATORIES
(Continued)

PART 2 - PROPERTY & CASUALTY INTERROGATORIES

14.1 Is the company a cedant in a multiple cedant reinsurance contract? YES [] NO [X]

14.2 If yes, please describe the method of allocating and recording reinsurance among the cedants:

.....

14.3 If the answer to 14.1 is yes, are the methods described in item 14.2 entirely contained in the respective multiple cedant reinsurance contracts? YES [] NO [X]

14.4 If the answer to 14.3 is no, are all the methods described in 14.2 entirely contained in written agreements? YES [] NO [X]

14.5 If the answer to 14.4 is no, please explain:

.....

15.1 Has the reporting entity guaranteed any financed premium accounts? YES [] NO [X]

15.2 If yes, give full information

.....

16.1 Does the reporting entity own any securities of a real estate holding company or otherwise hold real estate indirectly? YES [] NO [X]

16.11 Name of real estate holding company _____

16.12 Number of parcels involved _____

16.13 Total book/adjusted carrying value \$ _____

16.2 If yes, provide explanation

.....

17.1 Does the reporting entity write any warranty business? YES [] NO [X]
If yes, disclose the following information for each of the following types of warranty coverage:

	1	2	3	4	5
	Direct Losses	Direct Losses	Direct Written	Direct Premium	Direct Premium
	Incurred	Unpaid	Premium	Unearned	Earned
17.11 Home	\$	\$	\$	\$	\$
17.12 Products	\$	\$	\$	\$	\$
17.13 Automobile	\$	\$	\$	\$	\$
17.14 Other*	\$	\$	\$	\$	\$

* Disclose type of coverage: _____

FIVE-YEAR HISTORICAL DATA

Show amounts in whole dollars only, no cents; show percentages to one decimal place, i.e., 17.6.

	1 2004	2 2003	3 2002	4 2001	5 2000
Gross Premiums Written (Page 8, Part 1B, Cols. 1, 2 & 3)					
1. Liability lines (Lines 11.1, 11.2, 16, 17.1, 17.2, 18.1, 18.2, 19.1, 19.2 & 19.3, 19.4)					
2. Property lines (Lines 1, 2, 9, 12, 21 & 26)					
3. Property and liability combined lines (Lines 3, 4, 5, 8, 22 & 27)					
4. All other lines (Lines 6, 10, 13, 14, 15, 23, 24, 28, 29 & 33)					
5. Nonproportional reinsurance lines (Lines 30, 31 & 32)					
6. Total (Line 34)					
Net Premiums Written (Page 8, Part 1B, Col. 6)					
7. Liability lines (Lines 11.1, 11.2, 16, 17.1, 17.2, 18.1, 18.2, 19.1, 19.2 & 19.3, 19.4)					
8. Property lines (Lines 1, 2, 9, 12, 21 & 26)					
9. Property and liability combined lines (Lines 3, 4, 5, 8, 22 & 27)					
10. All other lines (Lines 6, 10, 13, 14, 15, 23, 24, 28, 29 & 33)					
11. Nonproportional reinsurance lines (Lines 30, 31 & 32)					
12. Total (Line 34)					
Statement of Income (Page 4)					
13. Net underwriting gain (loss) (Line 8)					
14. Net investment gain (loss) (Line 11)	3,436,928	2,661,705	6,462,737	13,272,966	16,310,810
15. Total other income (Line 15)	3,688,803	(2,375,110)	(2,135,915)	(8,448,072)	(22,225,000)
16. Dividends to policyholders (Line 17)					
17. Federal and foreign income taxes incurred (Line 19)	2,550,562	(6,341,357)	880,126		
18. Net income (Line 20)	4,575,169	6,627,952	3,446,696	4,824,894	(5,914,190)
Balance Sheet Lines (Pages 2 and 3)					
19. Total admitted assets excluding protected cell business (Page 2, Line 24, Col. 3)	76,210,563	61,984,187	50,316,215	140,853,724	240,354,488
20. Premiums and considerations (Page 2, Col. 3)					
20.1 In course of collection (Line 12.1)					
20.2 Deferred and not yet due (Line 12.2)					
20.3 Accrued retrospective premiums (Line 12.3)					
21. Total liabilities excluding protected cell business (Page 3, Line 24)	20,598,717	11,126,591	6,039,605	100,030,583	206,104,276
22. Losses (Page 3, Lines 1 and 2)					
23. Loss adjustment expenses (Page 3, Line 3)					
24. Unearned premiums (Page 3, Line 9)					
25. Capital paid up (Page 3, Lines 28 & 29)	2,600,000	2,600,000	2,600,000	2,600,000	2,600,000
26. Surplus as regards policyholders (Page 3, Line 35)	55,611,846	50,857,596	44,276,610	40,823,141	34,250,212
Risk-Based Capital Analysis					
27. Total adjusted capital	55,611,846	50,857,596	44,276,610	40,823,141	34,250,212
28. Authorized control level risk-based capital	354,607	279,035	274,743	726,107	1,246,201
Percentage Distribution of Cash and Invested Assets (Page 2, Col. 3) (Item divided by Page 2, Line 10, Col. 3) x 100.0					
29. Bonds (Line 1)	37.1	74.8	77.0	81.6	93.9
30. Stocks (Lines 2.1 & 2.2)	0.3				
31. Mortgage loans on real estate (Lines 3.1 and 3.2)					
32. Real estate (Lines 4.1, 4.2 & 4.3)					
33. Cash and short-term investments (Line 5)	62.6	25.2	23.0	8.7	7.0
34. Contract loans (Line 6)			XXX	XXX	XXX
35. Other invested assets (Line 7)					
36. Receivable for securities (Line 8)	0.1			9.6	(0.9)
37. Aggregate write-ins for invested assets (Line 9)					
38. Cash and invested assets (Line 10)	100.0	100.0	100.0	100.0	100.0
Investments in Parent, Subsidiaries and Affiliates					
39. Affiliated bonds, (Sch. D, Summary, Line 25, Col. 1)					
40. Affiliated preferred stocks (Sch. D, Summary, Line 39, Col. 1)					
41. Affiliated common stocks (Sch. D, Summary, Line 53, Col. 2)					
42. Affiliated short-term investments (subtotals included in Schedule DA, Part 2, Col. 5, Line 11)					
43. Affiliated mortgage loans on real estate					
44. All other affiliated					
45. Total of above Lines 39 to 44					
46. Percentage of investments in parent, subsidiaries and affiliates to surplus as regards policyholders (Line 45 above divided by Page 3, Col. 1, Line 35 x 100.0)					

FIVE-YEAR HISTORICAL DATA
(Continued)

	1 2004	2 2003	3 2002	4 2001	5 2000
Capital and Surplus Accounts (Page 4)					
47. Net unrealized capital gains (losses) (Line 23)	163,755			428,742	(360,429)
48. Dividends to stockholders (Line 34)					
49. Change in surplus as regards policyholders for the year (Line 37)	4,754,250	6,580,986	3,453,469	6,572,928	(5,991,869)
Gross Losses Paid (Page 9, Part 2, Cols. 1 & 2)					
50. Liability lines (Lines 11.1, 11.2, 16, 17.1, 17.2, 18.1, 18.2, 19.1, 19.2 & 19.3, 19.4)					
51. Property lines (Lines 1, 2, 9, 12, 21 & 26)					
52. Property and liability combined lines (Lines 3, 4, 5, 8, 22 & 27)					
53. All other lines (Lines 6, 10, 13, 14, 15, 23, 24, 28, 29 & 33)					
54. Nonproportional reinsurance lines (Lines 30, 31 & 32)					
55. Total (Line 34)					
Net Losses Paid (Page 9, Part 2, Col. 4)					
56. Liability lines (Lines 11.1, 11.2, 16, 17.1, 17.2, 18.1, 18.2, 19.1, 19.2 & 19.3, 19.4)					
57. Property lines (Lines 1, 2, 9, 12, 21 & 26)					
58. Property and liability combined lines (Lines 3, 4, 5, 8, 22 & 27)					
59. All other lines (Lines 6, 10, 13, 14, 15, 23, 24, 28, 29 & 33)					
60. Nonproportional reinsurance lines (Lines 30, 31 & 32)					
61. Total (Line 34)					
Operating Percentages (Page 4) (Item divided by Page 4, Line 1) x 100.0					
62. Premiums earned (Line 1)	100.0	100.0	100.0	100.0	100.0
63. Losses incurred (Line 2)					
64. Loss expenses incurred (Line 3)					
65. Other underwriting expenses incurred (Line 4)			100.0		
66. Net underwriting gain (loss) (Line 8)					
Other Percentages					
67. Other underwriting expenses to net premiums written (Page 4, Lines 4 + 5 - 15 divided by Page 8, Part 1B, Col. 6, Line 34 x 100.0)					
68. Losses and loss expenses incurred to premiums earned (Page 4, Lines 2 + 3 divided by Page 4, Line 1 x 100.0)					
69. Net premiums written to policyholders' surplus (Page 8, Part 1B, Col. 6, Line 34 divided by Page 3, Line 35, Col. 1 x 100.0)					
One Year Loss Development (000 omitted)					
70. Development in estimated losses and loss expenses incurred prior to current year (Schedule P, Part 2 - Summary, Line 12, Col. 11)					
71. Percent of development of losses and loss expenses incurred to policyholders' surplus of prior year end (Line 70 above divided by Page 4, Line 21, Col. 1 x 100.0)					
Two Year Loss Development (000 omitted)					
72. Development in estimated losses and loss expenses incurred 2 years before the current year and prior year (Schedule P, Part 2 - Summary, Line 12, Col. 12)					
73. Percent of development of losses and loss expenses incurred to reported policyholders' surplus of second prior year end (Line 72 above divided by Page 4, Line 21, Col. 2 x 100.0)					

SCHEDULE D - SUMMARY BY COUNTRY

Long-Term Bonds and Stocks OWNED December 31 of Current Year

Description		1	2	3	4
		Book/Adjusted Carrying Value	Fair Value	Actual Cost	Par Value of Bonds
BONDS					
Governments (Including all obligations guaranteed by governments)	1. United States	2,719,251	2,721,686	2,737,908	2,736,500
	2. Canada				
	3. Other Countries				
	4. Totals	2,719,251	2,721,686	2,737,908	2,736,500
States, Territories and Possessions (Direct and guaranteed)	5. United States				
	6. Canada				
	7. Other Countries				
	8. Totals				
Political Subdivisions of States, Territories and Possessions (Direct and guaranteed)	9. United States				
	10. Canada				
	11. Other Countries				
	12. Totals				
Special revenue and special assessment obligations and all non-guaranteed obligations of agencies and authorities of governments and their political subdivisions	13. United States	2,753,924	2,841,652	2,763,067	2,785,000
	14. Canada				
	15. Other Countries				
	16. Totals	2,753,924	2,841,652	2,763,067	2,785,000
Public Utilities (unaffiliated)	17. United States				
	18. Canada				
	19. Other Countries				
	20. Totals				
Industrial and Miscellaneous and Credit Tenant Loans (unaffiliated)	21. United States	20,136,021	21,341,337	20,354,757	19,876,000
	22. Canada				
	23. Other Countries				
	24. Totals	20,136,021	21,341,337	20,354,757	19,876,000
Parent, Subsidiaries and Affiliates	25. Totals				
26. Total Bonds		25,609,196	26,904,675	25,855,732	25,397,500
PREFERRED STOCKS					
Public Utilities (unaffiliated)	27. United States				
	28. Canada				
	29. Other Countries				
	30. Totals				
Banks, Trust and Insurance Companies (unaffiliated)	31. United States				
	32. Canada				
	33. Other Countries				
	34. Totals				
Industrial and Miscellaneous (unaffiliated)	35. United States				
	36. Canada				
	37. Other Countries				
	38. Totals				
Parent, Subsidiaries and Affiliates	39. Totals				
40. Total Preferred Stocks					
COMMON STOCKS					
Public Utilities (unaffiliated)	41. United States				
	42. Canada				
	43. Other Countries				
	44. Totals				
Banks, Trust and Insurance Companies (unaffiliated)	45. United States				
	46. Canada				
	47. Other Countries				
	48. Totals				
Industrial and Miscellaneous (unaffiliated)	49. United States	184,589	184,589	20,834	
	50. Canada				
	51. Other Countries				
	52. Totals	184,589	184,589	20,834	
Parent, Subsidiaries and Affiliates	53. Totals				
54. Total Common Stocks		184,589	184,589	20,834	
55. Total Stocks		184,589	184,589	20,834	
56. Total Bonds and Stocks		25,793,785	27,089,264	25,876,566	

SCHEDULE D - VERIFICATION BETWEEN YEARS

1. Book/adjusted carrying value of bonds and stocks, prior year	45,525,495	6. Foreign Exchange Adjustment:	
2. Cost of bonds and stocks acquired, Column 7, Part 3	2,496,811	6.1 Column 15, Part 1	
3. Increase (decrease) by adjustment:		6.2 Column 19, Part 2, Section 1	
3.1 Columns 12 + 13 - 14, Part 1	(33,301)	6.3 Column 16, Part 2, Section 2	
3.2 Column 18, Part 2, Section 1		6.4 Column 15, Part 4	
3.3 Column 15, Part 2, Section 2	163,755	7. Book/adjusted carrying value at end of current period	25,793,786
3.4 Column 14, Part 4	(76,294)	8. Total valuation allowance	
4. Total gain (loss), Column 19, Part 4	531,239	9. Subtotal (Lines 7 plus 8)	25,793,786
5. Deduct consideration for bonds and stocks disposed of Column 7, Part 4	22,813,919	10. Total nonadmitted amounts	
		11. Statement value of bonds and stocks, current period	25,793,786

NONE **Schedule P - Part 1 - Summary**

NONE **Schedule P - Part 2, 3, 4 - Summary**

SCHEDULE T - EXHIBIT OF PREMIUMS WRITTEN
Allocated by States and Territories

States, Etc.	1 Is Insurer Licensed? (Yes or No)	Gross Premiums, Including Policy and Membership Fees Less Return Premiums and Premiums on Policies Not Taken		4 Dividends Paid or Credited to Policyholders on Direct Business	5 Direct Losses Paid (Deducting Salvage)	6 Direct Losses Incurred	7 Direct Losses Unpaid	8 Finance and Service Charges Not Included in Premiums	9 Direct Premium Written for Federal Purchasing Groups (Included in Col. 2)
		2 Direct Premiums Written	3 Direct Premiums Earned						
1. Alabama	AL	NO							
2. Alaska	AK	NO							
3. Arizona	AZ	NO							
4. Arkansas	AR	NO							
5. California	CA	YES							
6. Colorado	CO	NO							
7. Connecticut	CT	NO							
8. Delaware	DE	NO							
9. Dist. Columbia	DC	NO							
10. Florida	FL	NO							
11. Georgia	GA	NO							
12. Hawaii	HI	NO							
13. Idaho	ID	NO							
14. Illinois	IL	NO							
15. Indiana	IN	NO							
16. Iowa	IA	NO							
17. Kansas	KS	NO							
18. Kentucky	KY	NO							
19. Louisiana	LA	NO							
20. Maine	ME	NO							
21. Maryland	MD	NO							
22. Massachusetts	MA	NO							
23. Michigan	MI	NO							
24. Minnesota	MN	NO							
25. Mississippi	MS	NO							
26. Missouri	MO	NO							
27. Montana	MT	NO							
28. Nebraska	NE	NO							
29. Nevada	NV	NO							
30. New Hampshire	NH	NO							
31. New Jersey	NJ	NO							
32. New Mexico	NM	NO							
33. New York	NY	NO							
34. No. Carolina	NC	NO							
35. No. Dakota	ND	NO							
36. Ohio	OH	NO							
37. Oklahoma	OK	NO							
38. Oregon	OR	NO							
39. Pennsylvania	PA	NO							
40. Rhode Island	RI	NO							
41. So. Carolina	SC	NO							
42. So. Dakota	SD	NO							
43. Tennessee	TN	NO							
44. Texas	TX	NO							
45. Utah	UT	NO							
46. Vermont	VT	NO							
47. Virginia	VA	NO							
48. Washington	WA	NO							
49. West Virginia	WV	NO							
50. Wisconsin	WI	NO							
51. Wyoming	WY	NO							
52. American Samoa	AS	NO							
53. Guam	GU	NO							
54. Puerto Rico	PR	NO							
55. U.S. Virgin Islands	VI	NO							
56. Canada	CN	NO							
57. Aggregate other alien	OT	XXX							
58. Totals	(a) 1								

DETAILS OF WRITE-INS									
5701.	XXX								
5702.	XXX								
5703.	XXX								
5798. Summary of remaining write-ins for Line 57 from overflow page	XXX								
5799. Totals (Lines 5701 through 5703 + 5798) (Line 57 above)	XXX								

Explanation of basis of allocation of premiums by states, etc.

.....

.....

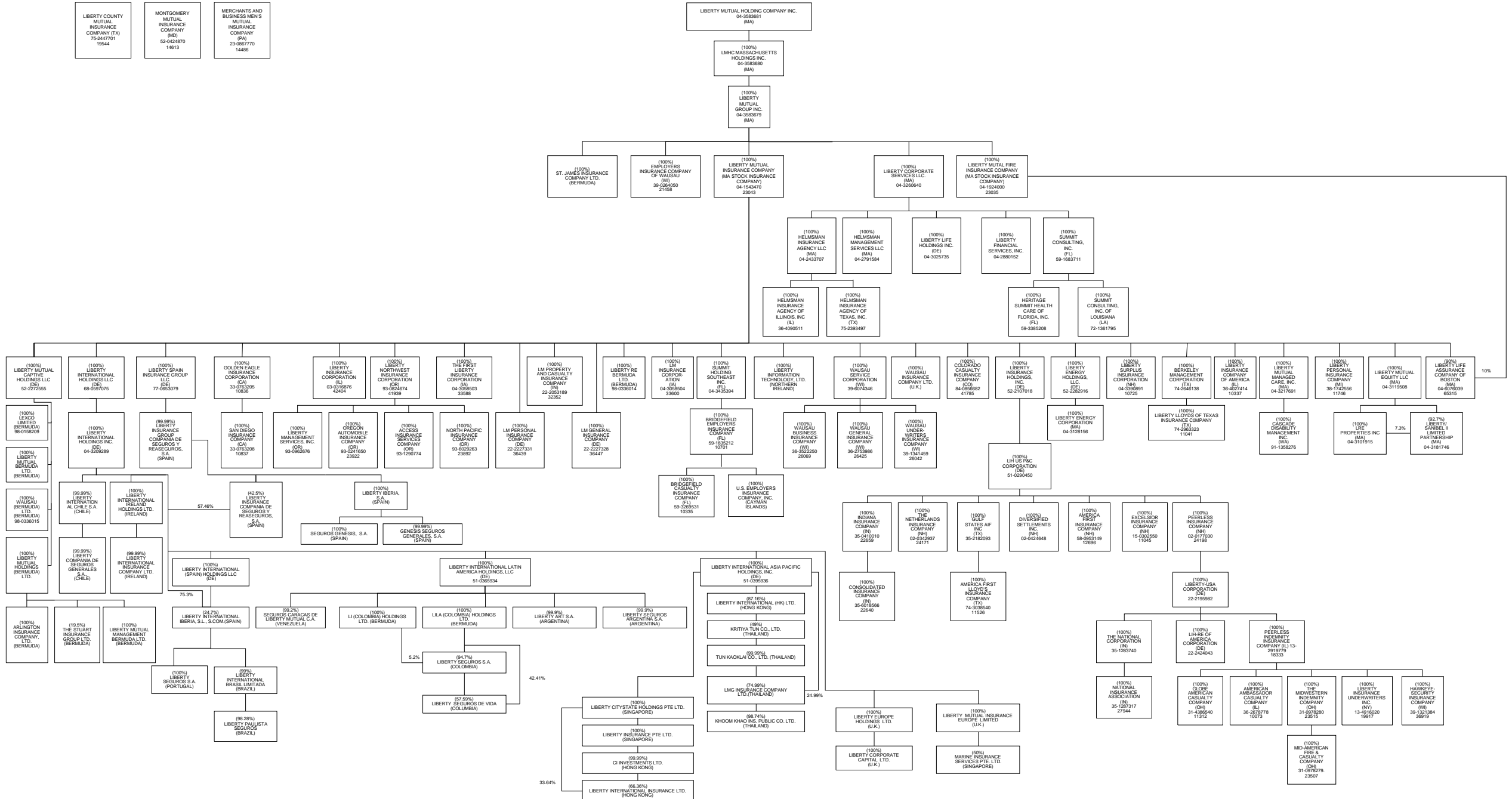
.....

.....

(a) Insert the number of yes responses except for Canada and Other Alien.

SCHEDULE Y - INFORMATION CONCERNING ACTIVITIES OF INSURER MEMBERS OF A HOLDING COMPANY GROUP

PART 1 - ORGANIZATIONAL CHART



OVERFLOW PAGE FOR WRITE-INS
