

ANNUAL STATEMENT

OF THE

WEST AMERICAN INSURANCE COMPANY

of **INDIANAPOLIS**

in the state of **INDIANA**

TO THE

Insurance Department

OF THE

FOR THE YEAR ENDED

December 31, 2008

PROPERTY AND CASUALTY

2008



44393200820100010

ANNUAL STATEMENT

For the Year Ended December 31, 2008
OF THE CONDITION AND AFFAIRS OF THE

West American Insurance Company

NAIC Group Code 0111 0111 **NAIC Company Code** 44393 **Employer's ID Number** 31-0624491
(Current Period) (Prior Period)

Organized under the Laws of Indiana, **State of Domicile or Port of Entry** Indiana
Country of Domicile United States of America

Incorporated/Organized: September 6, 1991 **Commenced Business:** May 31, 1995

Statutory Home Office: 7999 Knue Road, Suite 450, Indianapolis, IN 46250-1901
(Street and Number) (City or Town, State and Zip Code)

Main Administrative Office: 9450 Seward Road
(Street and Number)
Fairfield, OH 45014 513-603-2400
(City or Town, State and Zip Code) (Area Code) (Telephone Number)

Mail Address: 175 Berkeley Street, Boston, MA 02116
(Street and Number or P.O. Box) (City or Town, State and Zip Code)

Primary Location of Books and Records: 175 Berkeley Street Boston, MA 02116 617-357-9500
(Street and Number) (City or Town, State and Zip Code) (Area Code) (Telephone Number)

Internet Website Address: www.LibertyMutualAgencyMarkets.com

Statutory Statement Contact: Joanne Connolly 617-357-9500 x44393
(Name) (Area Code) (Telephone Number) (Extension)
Joanne.Connolly@LibertyMutual.com 617-574-5955
(E-Mail Address) (Fax Number)

OFFICERS

Chairman of the Board

Gary Richard Gregg

	Name	Title
1.	Gary Richard Gregg	President and Chief Executive Officer
2.	Dexter Robert Legg #	Secretary
3.	Michael Joseph Fallon #	Treasurer and Chief Financial Officer

VICE-PRESIDENTS

Name	Title	Name	Title
Anthony Alexander Fontanes	EVP and Chief Investment Officer	Joseph Anthony Gilles	Executive Vice President
Scott Rhodes Goodby	EVP and Chief Operating Officer		

DIRECTORS OR TRUSTEES

Gary Richard Gregg	Michael Joseph Fallon #	John Derek Doyle	Joseph Anthony Gilles
Scott Rhodes Goodby	Kevin John Kirschner	Christopher Charles Mansfield	

State of Massachusetts

County of Suffolk ss

The officers of this reporting entity being duly sworn, each depose and say that they are the described officers of said reporting entity, and that on the reporting period stated above, all of the herein described assets were the absolute property of the said reporting entity, free and clear from any liens or claims thereon, except as herein stated, and that this statement, together with related exhibits, schedules and explanations therein contained, annexed or referred to, is a full and true statement of all the assets and liabilities and of the condition and affairs of the said reporting entity as of the reporting period stated above, and of its income and deductions therefrom for the period ended, and have been completed in accordance with the NAIC Annual Statement Instructions and Accounting Practices and Procedures manual except to the extent that: (1) state law may differ; or, (2) that state rules or regulations require differences in reporting not related to accounting practices and procedures, according to the best of their information, knowledge and belief, respectively. Furthermore, the scope of this attestation by the described officers also includes the related corresponding electronic filing with the NAIC, when required, that is an exact copy (except for formatting differences due to electronic filing) of the enclosed statement. The electronic filing may be requested by various regulators in lieu of or in addition to the enclosed statement.

_____ (Signature) Gary Richard Gregg _____ (Printed Name) 1. President and Chief Executive Officer _____ (Title)	_____ (Signature) Dexter Robert Legg # _____ (Printed Name) 2. Secretary _____ (Title)	_____ (Signature) Michael Joseph Fallon # _____ (Printed Name) 3. Treasurer and Chief Financial Officer _____ (Title)
--	--	---

Subscribed and sworn to before me this
2nd day of February, 2009

a. Is this an original filing? Yes No
b. If no: 1. State the amendment number _____
2. Date filed _____
3. Number of pages attached _____

ASSETS

	Current Year			Prior Year
	1	2	3	4
	Assets	Nonadmitted Assets	Net Admitted Assets (Cols. 1 - 2)	Net Admitted Assets
1. Bonds (Schedule D)	234,529,091		234,529,091	244,411,922
2. Stocks (Schedule D):				
2.1 Preferred stocks				
2.2 Common stocks				
3. Mortgage loans on real estate (Schedule B):				
3.1 First liens				
3.2 Other than first liens				
4. Real estate (Schedule A):				
4.1 Properties occupied by the company (less \$ 0 encumbrances)				
4.2 Properties held for the production of income (less \$ 0 encumbrances)				
4.3 Properties held for sale (less \$ 0 encumbrances)				
5. Cash (\$ 813,380, Schedule E - Part 1), cash equivalents (\$ 2,310,760, Schedule E - Part 2), and short-term investments (\$ 18,527,070, Schedule DA)	21,651,210		21,651,210	23,233,909
6. Contract loans (including \$ 0 premium notes)				
7. Other invested assets (Schedule BA)	161,116		161,116	161,116
8. Receivables for securities				
9. Aggregate write-ins for invested assets				
10. Subtotals, cash and invested assets (Lines 1 to 9)	256,341,417		256,341,417	267,806,947
11. Title plants less \$ 0 charged off (for Title insurers only)				
12. Investment income due and accrued	3,661,481		3,661,481	3,797,919
13. Premiums and considerations:				
13.1 Uncollected premiums and agents' balances in the course of collection				
13.2 Deferred premiums, agents' balances and installments booked but deferred and not yet due (including \$ 0 earned but unbilled premiums)				
13.3 Accrued retrospective premiums				
14. Reinsurance:				
14.1 Amounts recoverable from reinsurers	32,301,937		32,301,937	
14.2 Funds held by or deposited with reinsured companies				
14.3 Other amounts receivable under reinsurance contracts				
15. Amounts receivable relating to uninsured plans				
16.1 Current federal and foreign income tax recoverable and interest thereon				
16.2 Net deferred tax asset				
17. Guaranty funds receivable or on deposit				
18. Electronic data processing equipment and software				
19. Furniture and equipment, including health care delivery assets (\$ 0)				
20. Net adjustment in assets and liabilities due to foreign exchange rates				
21. Receivables from parent, subsidiaries and affiliates	6,359,079		6,359,079	28,375
22. Health care (\$ 0) and other amounts receivable				
23. Aggregate write-ins for other than invested assets				
24. Total assets excluding Separate Accounts, Segregated Accounts and Protected Cell Accounts (Lines 10 to 23)	298,663,914		298,663,914	271,633,241
25. From Separate Accounts, Segregated Accounts and Protected Cell Accounts				
26. Total (Lines 24 and 25)	298,663,914		298,663,914	271,633,241

DETAILS OF WRITE-IN LINES				
0901.				
0902.				
0903.				
0998. Summary of remaining write-ins for Line 09 from overflow page				
0999. Totals (Lines 0901 through 0903 plus 0998) (Line 09 above)				
2301.				
2302.				
2303.				
2398. Summary of remaining write-ins for Line 23 from overflow page				
2399. Totals (Lines 2301 through 2303 plus 2398) (Line 23 above)				

LIABILITIES, SURPLUS AND OTHER FUNDS

	1	2
	Current Year	Prior Year
1. Losses (Part 2A, Line 35, Column 8)		
2. Reinsurance payable on paid losses and loss adjustment expenses		
3. Loss adjustment expenses (Part 2A, Line 35, Column 9)		
4. Commissions payable, contingent commissions and other similar charges		
5. Other expenses (excluding taxes, licenses and fees)		
6. Taxes, licenses and fees (excluding federal and foreign income taxes)		
7.1 Current federal and foreign income taxes (including \$ 0 on realized capital gains (losses))	23,057,801	21,619,586
7.2 Net deferred tax liability	31,878,000	35,050,961
8. Borrowed money \$ 0 and interest thereon \$ 0		
9. Unearned premiums (Part 1A, Line 38, Column 5) (after deducting unearned premiums for ceded reinsurance of \$ 211,124,791 and including warranty reserves of \$ 0)		
10. Advance premium		
11. Dividends declared and unpaid:		
11.1 Stockholders		
11.2 Policyholders		
12. Ceded reinsurance premiums payable (net of ceding commissions)	31,110,793	
13. Funds held by company under reinsurance treaties (Schedule F, Part 3, Column 19)		
14. Amounts withheld or retained by company for account of others	15,513	
15. Remittances and items not allocated		
16. Provision for reinsurance (Schedule F, Part 7)		1,086,271
17. Net adjustments in assets and liabilities due to foreign exchange rates		
18. Drafts outstanding		
19. Payable to parent, subsidiaries and affiliates	1,874,489	
20. Payable for securities		
21. Liability for amounts held under uninsured plans		
22. Capital notes \$ 0 and interest thereon \$ 0		
23. Aggregate write-ins for liabilities	3,701,610	
24. Total liabilities excluding protected cell liabilities (Lines 1 through 23)	91,638,206	57,756,818
25. Protected cell liabilities		
26. Total liabilities (Lines 24 and 25)	91,638,206	57,756,818
27. Aggregate write-ins for special surplus funds		
28. Common capital stock	3,100,000	3,100,000
29. Preferred capital stock		
30. Aggregate write-ins for other than special surplus funds		
31. Surplus notes		
32. Gross paid in and contributed surplus	3,951,307	3,951,307
33. Unassigned funds (surplus)	199,974,401	206,825,115
34. Less treasury stock, at cost:		
34.1 0 shares common (value included in Line 28 \$ 0)		
34.2 0 shares preferred (value included in Line 29 \$ 0)		
35. Surplus as regards policyholders (Lines 27 to 33, less 34) (Page 4, Line 39)	207,025,708	213,876,422
36. Totals (Page 2, Line 26, Col. 3)	298,663,914	271,633,240

DETAILS OF WRITE-IN LINES		
2301. Collateral held for securities loaned	3,701,610	
2302.		
2303.		
2398. Summary of remaining write-ins for Line 23 from overflow page		
2399. Totals (Lines 2301 through 2303 plus 2398) (Line 23 above)	3,701,610	
2701.		
2702.		
2703.		
2798. Summary of remaining write-ins for Line 27 from overflow page		
2799. Totals (Lines 2701 through 2703 plus 2798) (Line 27 above)		
3001.		
3002.		
3003.		
3098. Summary of remaining write-ins for Line 30 from overflow page		
3099. Totals (Lines 3001 through 3003 plus 3098) (Line 30 above)		

STATEMENT OF INCOME

	1	2
	Current Year	Prior Year
UNDERWRITING INCOME		
1. Premiums earned (Part 1, Line 35, Column 4)		
DEDUCTIONS:		
2. Losses incurred (Part 2, Line 35, Column 7)		
3. Loss adjustment expenses incurred (Part 3, Line 25, Column 1)		
4. Other underwriting expenses incurred (Part 3, Line 25, Column 2)		708
5. Aggregate write-ins for underwriting deductions		
6. Total underwriting deductions (Lines 2 through 5)		708
7. Net income of protected cells		
8. Net underwriting gain (loss) (Line 1 minus Line 6 plus Line 7)		(708)
INVESTMENT INCOME		
9. Net investment income earned (Exhibit of Net Investment Income, Line 17)	14,933,681	14,434,507
10. Net realized capital gains (losses) less capital gains tax of \$ (40,351) (Exhibit of Capital Gains (Losses))	(74,938)	347,773
11. Net investment gain (loss) (Lines 9 + 10)	14,858,743	14,782,280
OTHER INCOME		
12. Net gain or (loss) from agents' or premium balances charged off (amount recovered \$ 0 amount charged off \$ 0)		
13. Finance and service charges not included in premiums		
14. Aggregate write-ins for miscellaneous income	(3,632)	
15. Total other income (Lines 12 through 14)	(3,632)	
16. Net income before dividends to policyholders, after capital gains tax and before all other federal and foreign income taxes (Lines 8 + 11 + 15)	14,855,111	14,781,572
17. Dividends to policyholders		
18. Net income, after dividends to policyholders, after capital gains tax and before all other federal and foreign income taxes (Line 16 minus Line 17)	14,855,111	14,781,572
19. Federal and foreign income taxes incurred	4,703,151	4,168,257
20. Net income (Line 18 minus Line 19) (to Line 22)	10,151,960	10,613,315
CAPITAL AND SURPLUS ACCOUNT		
21. Surplus as regards policyholders, December 31 prior year (Page 4, Line 39, Column 2)	213,876,420	216,022,071
22. Net income (from Line 20)	10,151,960	10,613,315
23. Net transfers (to) from Protected Cell accounts		
24. Change in net unrealized capital gains or (losses) less capital gains tax of \$ (94,563)	(175,618)	
25. Change in net unrealized foreign exchange capital gain (loss)		
26. Change in net deferred income tax	3,078,437	(154,845)
27. Change in nonadmitted assets (Exhibit of Nonadmitted Assets, Line 26, Col. 3)		
28. Change in provision for reinsurance (Page 3, Line 16, Column 2 minus Column 1)	1,086,271	395,879
29. Change in surplus notes		
30. Surplus (contributed to) withdrawn from protected cells		
31. Cumulative effect of changes in accounting principles		
32. Capital changes:		
32.1 Paid in		
32.2 Transferred from surplus (Stock Dividend)		
32.3 Transferred to surplus		
33. Surplus adjustments:		
33.1 Paid in		
33.2 Transferred to capital (Stock Dividend)		
33.3 Transferred from capital		
34. Net remittances from or (to) Home Office		
35. Dividends to stockholders	(21,387,643)	(13,000,000)
36. Change in treasury stock (Page 3, Lines 34.1 and 34.2, Column 2 minus Column 1)		
37. Aggregate write-ins for gains and losses in surplus	395,881	
38. Change in surplus as regards policyholders for the year (Lines 22 through 37)	(6,850,712)	(2,145,651)
39. Surplus as regards policyholders, as of December 31 current year (Lines 21 plus Line 38) (Page 3, Line 35)	207,025,708	213,876,420

DETAILS OF WRITE-IN LINES		
0501.		
0502.		
0503.		
0598. Summary of remaining write-ins for Line 05 from overflow page		
0599. Totals (Lines 0501 through 0503 plus 0598) (Line 05 above)		
1401. Other income/(expense)	(3,632)	
1402.		
1403.		
1498. Summary of remaining write-ins for Line 14 from overflow page		
1499. Totals (Lines 1401 through 1403 plus 1498) (Line 14 above)	(3,632)	
3701. Other changes in surplus	395,881	
3702.		
3703.		
3798. Summary of remaining write-ins for Line 37 from overflow page		
3799. Totals (Lines 3701 through 3703 plus 3798) (Line 37 above)	395,881	

CASH FLOW

	1	2
Cash from Operations	Current Year	Prior Year
1. Premiums collected net of reinsurance	31,054,057	
2. Net investment income	16,624,957	16,028,936
3. Miscellaneous income	9,823	
4. Total (Lines 1 through 3)	47,688,837	16,028,936
5. Benefit and loss related payments	30,069,339	
6. Net transfers to Separate Accounts, Segregated Accounts and Protected Cell Accounts		
7. Commissions, expenses paid and aggregate write-ins for deductions	5,683,377	708
8. Dividends paid to policyholders		
9. Federal and foreign income taxes paid (recovered) net of \$ 0 tax on capital gains (losses)	3,224,585	(5,302,010)
10. Total (Lines 5 through 9)	38,977,301	(5,301,302)
11. Net cash from operations (Line 4 minus Line 10)	8,711,536	21,330,238
Cash from Investments		
12. Proceeds from investments sold, matured or repaid:		
12.1 Bonds	38,960,989	55,064,394
12.2 Stocks		
12.3 Mortgage loans		
12.4 Real estate		
12.5 Other invested assets		
12.6 Net gains (or losses) on cash, cash equivalents and short-term investments		
12.7 Miscellaneous proceeds		
12.8 Total investment proceeds (Lines 12.1 to 12.7)	38,960,989	55,064,394
13. Cost of investments acquired (long-term only):		
13.1 Bonds	31,018,464	48,219,788
13.2 Stocks		
13.3 Mortgage loans		
13.4 Real estate		
13.5 Other invested assets		
13.6 Miscellaneous applications		
13.7 Total investments acquired (Lines 13.1 to 13.6)	31,018,464	48,219,788
14. Net increase (decrease) in contract loans and premium notes		
15. Net cash from investments (Line 12.8 minus Line 13.7 and Line 14)	7,942,525	6,844,606
Cash from Financing and Miscellaneous Sources		
16. Cash provided (applied):		
16.1 Surplus notes, capital notes		
16.2 Capital and paid in surplus, less treasury stock		
16.3 Borrowed funds		
16.4 Net deposits on deposit-type contracts and other insurance liabilities		
16.5 Dividends to stockholders	21,387,643	13,000,000
16.6 Other cash provided (applied)	3,150,883	1,422,153
17. Net cash from financing and miscellaneous sources (Lines 16.1 to Line 16.4 minus Line 16.5 plus Line 16.6)	(18,236,760)	(11,577,847)
RECONCILIATION OF CASH, CASH EQUIVALENTS AND SHORT-TERM INVESTMENTS		
18. Net change in cash, cash equivalents and short-term investments (Line 11, plus Lines 15 and 17)	(1,582,699)	16,596,997
19. Cash, cash equivalents and short-term investments:		
19.1 Beginning of year	23,233,909	6,636,912
19.2 End of year (Line 18 plus Line 19.1)	21,651,210	23,233,909

Note: Supplemental disclosures of cash flow information for non-cash transactions:

20.0001		
20.0002		
20.0003		

NONE Underwriting and Investment Exhibit - Part 1

NONE Underwriting and Investment Exhibit - Part 1A

UNDERWRITING AND INVESTMENT EXHIBIT

PART 1B – PREMIUMS WRITTEN

Line of Business	1	Reinsurance Assumed		Reinsurance Ceded		6 Net Premiums Written Cols. 1 + 2 + 3 - 4 - 5
	Direct Business (a)	2 From Affiliates	3 From Non- Affiliates	4 To Affiliates	5 To Non- Affiliates	
1. Fire	7,324,355			7,324,355		
2. Allied lines	7,538,306			7,538,306		
3. Farmowners multiple peril						
4. Homeowners multiple peril	97,698,410			97,698,410		
5. Commercial multiple peril	119,351,664			119,351,664		
6. Mortgage guaranty						
8. Ocean marine						
9. Inland marine	3,820,611			3,820,611		
10. Financial guaranty						
11.1 Medical malpractice—occurrence						
11.2 Medical malpractice—claims-made						
12. Earthquake	2,441,453			2,441,453		
13. Group accident and health						
14. Credit accident and health (group and individual)						
15. Other accident and health						
16. Workers' compensation	19,354,763			19,354,763		
17.1 Other liability—occurrence	9,003,626			9,003,626		
17.2 Other liability—claims-made	114			114		
18.1 Products liability—occurrence	2,255,094			2,255,094		
18.2 Products liability—claims-made						
19.1,19.2 Private passenger auto liability	94,389,853			94,389,853		
19.3,19.4 Commercial auto liability	52,652,582			52,652,582		
21. Auto physical damage	81,263,368			81,263,368		
22. Aircraft (all perils)						
23. Fidelity	78			78		
24. Surety	4,155,374	478		4,155,852		
26. Burglary and theft						
27. Boiler and machinery	830			830		
28. Credit						
29. International						
30. Warranty						
31. Reinsurance-Nonproportional Assumed Property	X X X					
32. Reinsurance-Nonproportional Assumed Liability	X X X					
33. Reinsurance-Nonproportional Assumed Financial Lines	X X X					
34. Aggregate write-ins for other lines of business						
35. TOTALS	501,250,481	478		501,250,959		

DETAILS OF WRITE-IN LINES						
3401.						
3402.						
3403.						
3498. Sum of remaining write-ins for Line 34 from overflow page						
3499. Totals (Lines 3401 through 3403 plus 3498) (Line 34 above)						

(a) Does the company's direct premiums written include premiums recorded on an installment basis? Yes [] No [X]

If yes: 1. The amount of such installment premiums \$

2. Amount at which such installment premiums would have been reported had they been recorded on an annualized basis \$

UNDERWRITING AND INVESTMENT EXHIBIT

PART 2A – UNPAID LOSSES AND LOSS ADJUSTMENT EXPENSES

Line of Business	Reported Losses				Incurred But Not Reported			8 Net Losses Unpaid (Cols. 4 + 5 + 6 - 7)	9 Net Unpaid Loss Adjustment Expenses
	1 Direct	2 Reinsurance Assumed	3 Deduct Reinsurance Recoverable from Authorized and Unauthorized Companies	4 Net Losses Excl. Incurred But Not Reported (Cols. 1 + 2 - 3)	5 Direct	6 Reinsurance Assumed	7 Reinsurance Ceded		
1. Fire	1,538,841		1,538,841		234,051		234,051		
2. Allied lines	742,562		742,562		261,025		261,025		
3. Farmowners multiple peril									
4. Homeowners multiple peril	21,894,805		21,894,805		20,694,628		20,694,628		
5. Commercial multiple peril	68,173,977		68,173,977		55,721,572		55,721,572		
6. Mortgage guaranty									
8. Ocean marine									
9. Inland marine	201,751		201,751		115,275		115,275		
10. Financial guaranty									
11.1 Medical malpractice—occurrence									
11.2 Medical malpractice—claims-made									
12. Earthquake	2,199		2,199						
13. Group accident and health								(a)	
14. Credit accident and health (group and individual)								(a)	
15. Other accident and health									
16. Workers' compensation	63,355,294		63,355,294		65,209,317		65,209,317		
17.1 Other liability—occurrence	9,087,556		9,087,556		14,304,345		14,304,345		
17.2 Other liability—claims-made									
18.1 Products liability—occurrence	1,269,639		1,269,639		1,882,445		1,882,445		
18.2 Products liability—claims-made									
19.1,19.2 Private passenger auto liability	87,402,590		87,402,590		29,983,184		29,983,184		
19.3,19.4 Commercial auto liability	40,341,967		40,341,967		29,118,459		29,118,459		
21. Auto physical damage	4,472,730		4,472,730						
22. Aircraft (all perils)									
23. Fidelity					(243)		(243)		
24. Surety	70,002		70,002		505,105		505,105		
26. Burglary and theft									
27. Boiler and machinery									
28. Credit									
29. International									
30. Warranty									
31. Reinsurance-Nonproportional Assumed Property	X X X				X X X				
32. Reinsurance-Nonproportional Assumed Liability	X X X				X X X				
33. Reinsurance-Nonproportional Assumed Financial Lines	X X X				X X X				
34. Aggregate write-ins for other lines of business									
35. TOTALS	298,553,913		298,553,913		218,029,163		218,029,163		

DETAILS OF WRITE-IN LINES									
3401.									
3402.									
3403.									
3498. Sum of remaining write-ins for Line 34 from overflow page									
3499. Totals (Lines 3401 through 3403 plus 3498) (Line 34 above)									

(a) Including \$ 0 for present value of life indemnity claims.

UNDERWRITING AND INVESTMENT EXHIBIT

PART 3 - EXPENSES

	1	2	3	4
	Loss Adjustment Expenses	Other Underwriting Expenses	Investment Expenses	Total
1. Claim adjustment services:				
1.1 Direct	6,560,580			6,560,580
1.2 Reinsurance assumed				
1.3 Reinsurance ceded	6,560,580			6,560,580
1.4 Net claim adjustment services (1.1 + 1.2 - 1.3)				
2. Commission and brokerage:				
2.1 Direct, excluding contingent		70,315,350		70,315,350
2.2 Reinsurance assumed, excluding contingent				
2.3 Reinsurance ceded, excluding contingent		70,315,350		70,315,350
2.4 Contingent—direct				
2.5 Contingent—reinsurance assumed				
2.6 Contingent—reinsurance ceded				
2.7 Policy and membership fees				
2.8 Net commission and brokerage (2.1+2.2-2.3+2.4+2.5-2.6+2.7)				
3. Allowances to manager and agents				
4. Advertising			679	679
5. Boards, bureaus and associations			18	18
6. Surveys and underwriting reports			334	334
7. Audit of assureds' records				
8. Salary and related items:				
8.1 Salaries			62,805	62,805
8.2 Payroll taxes			3,506	3,506
9. Employee relations and welfare			3,563	3,563
10. Insurance			124	124
11. Directors' fees				
12. Travel and travel items			1,197	1,197
13. Rent and rent items			1,405	1,405
14. Equipment			1,279	1,279
15. Cost or depreciation of EDP equipment and software			416	416
16. Printing and stationery			174	174
17. Postage, telephone and telegraph, exchange and express			470	470
18. Legal and auditing			5,299	5,299
19. Totals (Lines 3 to 18)			81,269	81,269
20. Taxes, licenses and fees:				
20.1 State and local insurance taxes deducting guaranty association credits of \$ 0				
20.2 Insurance department licenses and fees				
20.3 Gross guaranty association assessments				
20.4 All other (excluding federal and foreign income and real estate)				
20.5 Total taxes, licenses and fees (20.1 + 20.2 + 20.3 + 20.4)				
21. Real estate expenses				
22. Real estate taxes				
23. Reimbursements by uninsured plans				
24. Aggregate write-ins for miscellaneous expenses			7,847	7,847
25. Total expenses incurred			89,116	(a) 89,116
26. Less unpaid expenses—current year				
27. Add unpaid expenses—prior year				
28. Amounts receivable relating to uninsured plans, prior year				
29. Amounts receivable relating to uninsured plans, current year				
30. TOTAL EXPENSES PAID (Lines 25 - 26 + 27 - 28 + 29)			89,116	89,116

DETAILS OF WRITE-IN LINES				
2401. Other expenses			7,847	7,847
2402.				
2403.				
2498. Sum of remaining write-ins for Line 24 from overflow page				
2499. Totals (Lines 2401 through 2403 plus 2498) (Line 24 above)			7,847	7,847

(a) Includes management fees of \$ 89,116 to affiliates and \$ 0 to non-affiliates.

EXHIBIT OF NET INVESTMENT INCOME

	1 Collected During Year	2 Earned During Year
1. U.S. Government bonds	(a) 469,605	378,112
1.1 Bonds exempt from U.S. tax	(a) 2,558,917	2,571,542
1.2 Other bonds (unaffiliated)	(a) 10,117,896	10,027,483
1.3 Bonds of affiliates	(a)	
2.1 Preferred stocks (unaffiliated)	(b)	
2.11 Preferred stocks of affiliates	(b)	
2.2 Common stocks (unaffiliated)		
2.21 Common stocks of affiliates		
3. Mortgage loans	(c)	
4. Real estate	(d)	
5. Contract loans		
6. Cash, cash equivalents and short-term investments	(e) 620,156	652,999
7. Derivative instruments	(f)	
8. Other invested assets		
9. Aggregate write-ins for investment income	1,392,661	1,392,661
10. Total gross investment income	15,159,235	15,022,797
11. Investment expenses		(g) 89,116
12. Investment taxes, licenses and fees, excluding federal income taxes		(g)
13. Interest expense		(h)
14. Depreciation on real estate and other invested assets		(i)
15. Aggregate write-ins for deductions from investment income		
16. Total deductions (Lines 11 through 15)		89,116
17. Net investment income (Line 10 minus Line 16)		14,933,681

DETAILS OF WRITE-IN LINES		
0901. Miscellaneous Income/ (Expense)	1,392,661	1,392,661
0902.		
0903.		
0998. Summary of remaining write-ins for Line 09 from overflow page		
0999. Totals (Lines 0901 through 0903 plus 0998) (Line 09 above)	1,392,661	1,392,661
1501.		
1502.		
1503.		
1598. Summary of remaining write-ins for Line 15 from overflow page		
1599. Totals (Lines 1501 through 1503 plus 1598) (Line 15 above)		

- (a) Includes \$ 63,866 accrual of discount less \$ 1,618,704 amortization of premium and less \$ 25,139 paid for accrued interest on purchases.
- (b) Includes \$ 0 accrual of discount less \$ 0 amortization of premium and less \$ 0 paid for accrued dividends on purchases.
- (c) Includes \$ 0 accrual of discount less \$ 0 amortization of premium and less \$ 0 paid for accrued interest on purchases.
- (d) Includes \$ 0 for company's occupancy of its own buildings; and excludes \$ 0 interest on encumbrances.
- (e) Includes \$ 0 accrual of discount less \$ 0 amortization of premium and less \$ 0 paid for accrued interest on purchases.
- (f) Includes \$ 0 accrual of discount less \$ 0 amortization of premium.
- (g) Includes \$ 0 investment expenses and \$ 0 investment taxes, licenses and fees, excluding federal income taxes, attributable to segregated and Separate Accounts.
- (h) Includes \$ 0 interest on surplus notes and \$ 0 interest on capital notes.
- (i) Includes \$ 0 depreciation on real estate and \$ 0 depreciation on other invested assets.

EXHIBIT OF CAPITAL GAINS (LOSSES)

	1 Realized Gain (Loss) on Sales or Maturity	2 Other Realized Adjustments	3 Total Realized Capital Gain (Loss) (Columns 1 + 2)	4 Change in Unrealized Capital Gain (Loss)	5 Change in Unrealized Foreign Exchange Capital Gain (Loss)
1. U.S. Government bonds	33,232		33,232		
1.1 Bonds exempt from U.S. tax					
1.2 Other bonds (unaffiliated)	31,480	(180,000)	(148,520)	(270,181)	
1.3 Bonds of affiliates					
2.1 Preferred stocks (unaffiliated)					
2.11 Preferred stocks of affiliates					
2.2 Common stocks (unaffiliated)					
2.21 Common stocks of affiliates					
3. Mortgage loans					
4. Real estate					
5. Contract loans					
6. Cash, cash equivalents and short-term investments					
7. Derivative instruments					
8. Other invested assets					
9. Aggregate write-ins for capital gains (losses)					
10. Total capital gains (losses)	64,712	(180,000)	(115,288)	(270,181)	

DETAILS OF WRITE-IN LINES					
0901.					
0902.					
0903.					
0998. Summary of remaining write-ins for Line 09 from overflow page					
0999. Totals (Lines 0901 through 0903 plus 0998) (Line 09 above)					

NONE Exhibit of Nonadmitted Assets

NOTES TO FINANCIAL STATEMENTS

Note 1- Summary of Significant Accounting Policies

A. Accounting Practices

Effective January 1, 2001, and subject to any deviations prescribed or permitted by the State of Indiana, the accompanying financial statements of West American Insurance Company (the "Company") have been prepared in conformity with the National Association of Insurance Commissioners ("NAIC") *Accounting Practices and Procedures Manual* ("APP Manual").

B. Use of Estimates in the Preparation of the Financial Statements

The preparation of financial statements requires management to make estimates and assumptions that affect the reported amounts of assets, liabilities, revenues, and expenses. It also requires estimates in the disclosure of contingent assets and liabilities. Actual results could differ from these estimates.

C. Accounting Policies

Premiums are earned over the terms of the related policies and reinsurance contracts. Unearned premium reserves are established to cover the unexpired portion of premiums written. Such reserves are computed by pro-rata methods. Expenses incurred in connection with acquiring new insurance business, including acquisition costs such as sales commissions, are charged to operations as incurred. Expenses incurred are reduced for ceding allowances received or receivable.

In addition, the Company uses the following accounting policies:

1. Short term investments are carried at cost adjusted, where appropriate, for amortization of premium or discount, or market as specified by the Purposes and Procedures Manual of the NAIC Securities Valuation Office ("SVO Manual").
2. Bonds are carried at cost adjusted, where appropriate, for amortization of premium or discount, or market as specified by the SVO Manual.
3. The Company does not own common stocks.
4. The Company does not own preferred stocks.
5. The Company does not own mortgage loans.
6. Mortgage-backed/asset backed securities are stated at amortized cost or market based on guidance in the SVO Manual. Prepayment assumptions for mortgage backed/asset backed securities are updated monthly using the Bloomberg data service. The retrospective adjustment method is used to value all mortgage backed/asset backed securities.
7. The Company does not own any subsidiaries, controlled, or affiliated entities.
8. The Company does not own any joint ventures, partnerships or limited liability companies.
9. Derivative Securities, refer to Note 8.
10. Refer to Note 29.
11. Unpaid losses and loss adjustment expenses include an amount determined from individual case estimates and loss reports and an amount, based on past experience, for losses incurred but not reported. Such liabilities are necessarily based on assumptions and estimates, and while management believes the amount is adequate, the ultimate liability may be in excess of or less than the amount provided. The methods for making such estimates and for establishing the resulting liability are continually reviewed and follow current standards of practice. Any adjustments to the liability are reflected in the period that they are determined.
12. The Company did not change its capitalization policy in 2008.
13. The Company has no pharmaceutical rebate receivables.

Note 2- Accounting Changes and Correction of Errors

- A. There were no material changes in accounting principles or corrections of errors during the year.

Note 3- Business Combinations and Goodwill

A. Statutory Purchase Method

The Company did not enter into any statutory purchases during the year.

B. Statutory Mergers

The Company did not enter into any statutory mergers during the year.

NOTES TO FINANCIAL STATEMENTS

C. Impairment Loss

Not applicable

Note 4- Discontinued Operations

The Company has no discontinued operations to report.

Note 5- Investments

A. Mortgage Loans, including Mezzanine Real Estate Loans

The Company has no mortgage loans.

B. Troubled Debt Restructuring for Creditors

Not applicable

C. Reverse Mortgages

The Company has no reverse mortgages.

D. Loan-Backed Securities

1. The Company has elected to use historical cost for applying the retrospective adjustment method to securities.
2. Prepayment speed assumptions are updated monthly with data sourced from the Bloomberg data service.
3. The Company had no negative yield situations requiring a change from the retrospective to prospective method.

E. Repurchase Agreements

1. The Company did not enter into any repurchase agreements during the year.
2. The Company maintained collateral for loaned securities.
 - a) For loaned securities, Company policies require a minimum of 102% of the fair value of securities loaned to be maintained as collateral.
 - b) The Company has not pledged any of its assets as collateral.
3. Aggregate amount of contractually obligated open collateral positions for which the borrower may request the return of on demand:

	Under 30 Days	31 - 60 Days	61 - 90 Days	Over 90 Days	Total
Fair value of open reinvested collateral positions	2,174,996	54,306	135,765	1,336,544	3,701,610

4. Sources of collateral are cash and securities. Cash collateral is reinvested by the lending agent in short-term securities. The Company does not reinvest securities received as collateral.

F. Real Estate

The Company does not own real estate.

G. Investments in Low-Income Housing Tax Credits

1. There is one year remaining of unexpired tax credits. The required holding period for the LIHTC investment is five years.
2. The Company's LIHTC property is not currently subject to any regulatory reviews.
3. The carrying value of the Company's investment in LIHTC did not exceed 10% of its admitted assets.
4. The Company did not recognize any impairment loss on its LIHTC investment during the year.
5. The Company did not write-down its LIHTC investment or reclassify the LIHTC during the year due to the forfeiture or ineligibility of tax credits.

Note 6- Joint Ventures, Partnerships & Limited Liability Companies

- A. The Company has no investments in joint ventures, partnerships, or limited liability companies.

NOTES TO FINANCIAL STATEMENTS

- B. Impairments on joint ventures, partnerships, and limited liability companies.

Not Applicable

Note 7- Investment Income

- A. Accrued Investment Income

The Company does not admit investment income due and accrued if amounts are over 90 days past due.

- B. Amounts Nonadmitted

No amounts were excluded as of December 31, 2008.

Note 8- Derivative Instruments

The Company's investment activities do not include derivatives. However, the Company may acquire derivatives as additions to bond, common stock, or preferred stock investments. These derivatives are ancillary to the overall investment and are immaterial to the underlying investment portfolio.

Note 9 - Income Taxes

- A. The components of the net deferred tax assets and liabilities recognized in the Company's Assets, Liabilities, Surplus and Other Funds are as follows:

	December 31, 2008	December 31, 2007	Change
Total of gross deferred tax assets	6,176,000	3,251,000	2,925,000
Total of deferred tax liabilities	(38,054,000)	(38,302,000)	248,000
Net deferred tax asset	(31,878,000)	(35,051,000)	3,173,000
Net deferred tax asset non-admitted	0	0	0
Net admitted deferred tax asset	(31,878,000)	(35,051,000)	3,173,000

- B. The Company does not have any deferred tax liabilities described in SSAP No. 10, Income Taxes, paragraph 6d.
- C. The provisions for incurred taxes on earnings for the years ended December 31 are:

	2008	2007
Federal tax on operations	4,703,151	\$ 4,168,256
Net operating loss benefit	0	0
Foreign tax on operations	0	0
Income tax incurred on operations	4,703,151	\$ 4,168,256
Tax on capital gains	(40,351)	(12,398)
Total income tax incurred	4,662,800	\$ 4,155,859

The Company's deferred tax assets and liabilities result primarily from basis differences on invested assets.

The change in deferred income taxes is comprised of the following:

	2008
Change in net deferred income tax (without unrealized gain or loss)	3,078,437
Tax effect of unrealized (gains) losses	94,563
Total change in net deferred income tax	3,173,000

- D. Effective tax rates differ from the current statutory rate of 35% principally due to the effects of tax exempt interest, revisions to prior year estimates and basis differences on invested assets.
- E. The amount of Federal income taxes paid and available for recoupment in the event of future losses is \$2,262,000 from the current year and \$1,461,000 from the preceding year.

The Company has no net loss carryforward available to offset future net income subject to Federal income taxes.

The Company does not have deposits admitted under Section 6603 of the Internal Revenue Services Code.

- F. The Company's Federal income tax return is consolidated with the following entities:

Access Insurance Services, Co.	Liberty Mutual Group Inc.
AMBCO Capital Corporation	Liberty Mutual Holding Company Inc.
America First Insurance Company	Liberty Mutual Insurance Company
America First Lloyds Insurance Company	Liberty Mutual Personal Insurance Company
American Ambassador Casualty Company	Liberty Northwest Insurance Corporation
American Economy Insurance Company*	Liberty Personal Insurance Company
American Fire & Casualty Company	Liberty RE (Bermuda) Limited

NOTES TO FINANCIAL STATEMENTS

American States Insurance Company*	Liberty Sponsored Insurance (Vermont) Inc.
American States Insurance Company of Texas*	Liberty Surplus Insurance Corporation
American States Lloyds Insurance Company*	LIH U.S. P&C Corporation
American States Preferred Insurance*	LIH-RE of America Corporation
Avomark Insurance Company	LIU Specialty Insurance Agency Inc.
Berkeley Holding Company Associates, Inc.	LM General Insurance Company
Berkeley Management Corporation	LM Insurance Corporation
Bridgefield Casualty Insurance Company	LM Personal Insurance Company
Bridgefield Employers Insurance Company	LM Property & Casualty Insurance Company
Capitol Court Corporation*	LMHC Massachusetts Holdings Inc.
Capitol Agency, Inc., The (Arizona corporation)	LRE Properties, Inc.
Capitol Agency, Inc., The (Ohio corporation)	Mid-American Agency, Inc.
Capitol Agency, Inc., The (Tennessee corporation)	Mid-American Fire & Casualty Company
Cascade Disability Management, Inc.	Missouri Agency, Inc.
Colorado Casualty Insurance Company	North Pacific Insurance Company
Commercial Aviation Insurance, Inc.*	OCASCO Budget, Inc.
Companies Agency Insurance Services of California (dissolved 8/15/2008)	OCI Printing, Inc.
Companies Agency of Alabama, Inc. (dissolved 8/18/2008)	Ohio Casualty Corporation
Companies Agency of Georgia, Inc. (dissolved 8/15/2008)	Ohio Casualty of New Jersey, Inc.
Companies Agency of Kentucky, Inc. (dissolved 8/14/2008)	Ohio Life Brokerage Services, Inc.
Companies Agency of Massachusetts, Inc. (dissolved 8/29/08)	Ohio Security Insurance Company
Companies Agency of Michigan, Inc. (dissolved 8/15/2008)	Open Seas Solutions, Inc.*
Companies Agency of New York, Inc.	Oregon Automobile Insurance Company
Companies Agency of Pennsylvania, Inc.	Peerless Indemnity Insurance Company
Companies Agency of Phoenix, Inc.	Peerless Insurance Company
Consolidated Insurance Company	Pilot Insurance Services, Inc.*
Copley Venture Capital, Inc.	Rianoc Research Corporation*
Countrywide Services Corporation (dissolved 10/17/2008)	S.C. Bellevue, Inc.*
Diversified Settlements, Inc.	Safecare Company, Inc.*
Emerald City Insurance Agency, Inc.*	Safeco Corporation*
Employers Insurance Company of Wausau	Safeco General Agency, Inc.*
Excelsior Insurance Company	Safeco Insurance Company of America*
F.B. Beattie & Company, Inc.*	Safeco Insurance Company of Illinois*
First National Insurance Company of America*	Safeco Insurance Company of Indiana*
Florida State Agency, Inc.	Safeco Insurance Company of Oregon*
General America Corporation*	Safeco Lloyds Insurance Company*
General America Corporation of Texas *	Safeco National Insurance Company*
General Insurance Company of America*	Safeco Properties, Inc.*
Globe American Casualty Company	Safeco Surplus Lines Insurance Company*
Golden Eagle Insurance Corporation	San Diego Insurance Company
Gulf States AIF, Inc.	SCIT, Inc. *
Hawkeye-Security Insurance Company	St. James Insurance Company Ltd.
Heritage-Summit HealthCare, Inc.	State Agency, Inc. (Indiana corporation)
Indiana Insurance Company	State Agency, Inc. (Wisconsin corporation)
Insurance Company of Illinois*	Summit Consulting, Inc.
LEXCO Limited	Summit Consulting, Inc. of Louisiana
Liberty - USA Corporation	Summit Holding Southeast, Inc.
Liberty Assignment Corporation	The First Liberty Insurance Corporation
Liberty Energy Canada, Inc.	The Midwestern Indemnity Company
Liberty Financial Services, Inc.	The National Corporation
Liberty Hospitality Group, Inc.	The Netherlands Insurance Company
Liberty Insurance Company of America	The Ohio Casualty Insurance Company
Liberty Insurance Corporation	Wausau Business Insurance Company
Liberty Insurance Holdings, Inc.	Wausau General Insurance Company
Liberty Insurance Underwriters, Inc.	Wausau Service Corporation
Liberty Life Assurance Company of Boston	Wausau Underwriters Insurance Company
Liberty Life Holdings, Inc.	West American Insurance Company
Liberty Lloyds of Texas Insurance Company	Winmar Company, Inc.*
Liberty Management Services, Inc.	Winmar of the Desert, Inc.*
Liberty Mexico Holdings, Inc.	Winmar Oregon, Inc.*
Liberty Mutual Fire Insurance Company	Winmar-Metro, Inc.*

* This company joined the consolidated group in 2008 and its activity from the date it joined the group is included in the consolidated return.

NOTES TO FINANCIAL STATEMENTS

The method of federal income tax allocation is subject to a written agreement. Allocation is based upon separate return calculations with credit applied for losses as appropriate. The Company has the enforceable right to recoup prior year payments in the event of future losses.

Note 10- Information concerning Parent, Subsidiaries and Affiliates

- A. West American is wholly owned by The Ohio Casualty Insurance Company, which is wholly owned by Ohio Casualty Corporation, an Ohio insurance holding company. Ohio Casualty Corporation is owned by Liberty Mutual Insurance Company (78%), a Massachusetts insurance company, Liberty Mutual Fire Insurance Company (6%), a Wisconsin insurance company, Employers insurance Company of Wausau (8%), a Wisconsin insurance company and Peerless Insurance Company (8%), a New Hampshire insurance company.
- B. Transactions entered into by the Company with its affiliates are described on Schedule Y Part 2.
- C. Refer to Notes 10F, 22 and 25.
- D. At December 31, 2008, the Company reported \$4,484,590 due from affiliates. In general, the terms of the intercompany arrangements require settlement at least quarterly.
- E. The Company has made no guarantee or initiated undertaking for the benefit of affiliates which result in a material contingent exposure of the Company's or affiliates' assets or liabilities.
- F. Refer to Note 25 for information regarding the Amended and Restated Reinsurance Pooling Agreement.

Effective August 24, 2007 the Company was added as a party to an existing service agreement (the "Agreement") with Peerless Insurance Company and other affiliates. The Agreement allows parties to the Agreement to provide services related to common management functions including, but not limited to, coordinating marketing and advertising, information systems support, payroll and human resources services, actuarial support, accounting and other financial services, as well as consulting and other services as the parties may request.

Effective August 24, 2007 the Company entered into investment management agreements with LMIC and Liberty Mutual Investment Advisors LLC ("LMIA"). Under these agreements, LMIC and LMIA provide investment management services to the Company.

The Company entered into a cash management agreement with LMIA effective August 24, 2007.

The Company entered into a management services agreement, effective August 24, 2007 with LMIC. Under the agreement, LMIC may provide services related to common management functions including, but not limited to, accounting, financial, tax and auditing, information technology and support, purchasing, payroll and employee benefits, policy administration, real estate management, legal, general administration, as well as consulting and other services as the parties may request.

The Company is party to a Federal Tax Sharing Agreement between LMIC and affiliates (see Note 9F).

- G. The Company is part of a holding company structure as illustrated in Schedule Y Part 1.
- H. The Company does not own shares of an upstream company, either directly or indirectly.
- I. The Company has no investments in subsidiary, controlled or affiliated companies.
- J. Impairment of subsidiaries
Refer to 10 I
- K. Investment in foreign insurance subsidiaries.
Refer to 10 I
- L. Investment in downstream noninsurance holding companies.
Refer to 10 I

Note 11- Debt

- A. Capital Notes
Not applicable
- B. All Other Debt
Not applicable

NOTES TO FINANCIAL STATEMENTS

Note 12- Retirement Plans, Deferred Compensation, Postemployment Benefits and Compensated Absences and Other Postretirement Benefit Plans

The Company does not have any direct employees and therefore, does not have any direct obligations for a defined benefit plan, deferred compensation arrangements, compensated absences or other post retirement benefit plans. Services for the operation of the Company are provided under provisions of the Management Services Agreements as described in note 10 F.

Note 13- Capital and Surplus, Shareholders' Dividend Restrictions and Quasi-Reorganizations

1. Common Stock

The Company has 700,000 shares authorized, and 310,000 shares issued and outstanding as of December 31, 2008. All shares have a stated par value of \$10.

2. Preferred Stock

Not applicable

3. Dividend Restrictions

There are no dividend restrictions.

4. The Company made an ordinary dividend of \$21,387,642 to Ohio Casualty Insurance Company in June.

5. The maximum amount of dividends that can be paid by Ohio-domiciled insurance companies to shareholders without prior approval of the Insurance Commissioner is the greater of (a) 10% of surplus, or (b) net income. The maximum dividend payout that may be made without prior approval in 2009 is \$20,702,571.

6. The Company does not have restricted unassigned surplus.

7. The Company had no advances to surplus.

8. The Company did not hold stock for special purposes.

9. The Company does not hold special surplus funds.

10. The portion of unassigned funds (surplus) represented by cumulative unrealized loss is (\$175,618) after applicable deferred taxes of \$94,563.

11. Surplus Notes

Not applicable

12. Quasi re-organization (dollar impact)

Not applicable

13. Quasi re-organization (effective date)

Not applicable

Note 14- Contingencies

A. Contingent Commitments

The Company has no commitments or contingent commitments to affiliates or other entities as indicated in Note 10 E. The Company has made no guarantees on behalf of affiliates.

B. Assessments

The Company is subject to guaranty funds and other assessments by the states in which it writes business. Guaranty fund assessments are accrued at the time of insolvencies. Other assessments are accrued either at the time of assessments or in the case of premium based assessments, at the time the premiums are written, or, in the case of loss based assessments, at the time the losses are incurred.

As a result of an inter-company reinsurance arrangement (see Note 25), all guaranty fund and other assessments liabilities are ceded to Peerless Insurance Company.

C. Gain Contingencies

Not applicable

D. Claims related extra contractual obligations and bad faith losses stemming from lawsuits

The Company did not have claims related extra contractual obligation losses and bad faith losses stemming from lawsuits in the current period.

NOTES TO FINANCIAL STATEMENTS

E. All other Contingencies

Lawsuits arise against the Company in the normal course of business. Contingent liabilities arising from litigation, income taxes, and other matters are not considered material in relation to the financial position of the Company.

As disclosed in Note 9 F, the Company is a member of a controlled group for federal income tax purposes, and that group includes Liberty Mutual Group Inc. ("LMGI"). LMGI is the plan sponsor of the Liberty Mutual Retirement Benefit Plan, a qualified plan under federal law. Pursuant to federal law, if LMGI has not made the minimum required contributions with respect to the Liberty Mutual Retirement Benefit Plan, the Company, jointly and severally with all other members of the controlled group, would be contingently liable to make such contributions.

Note 15- Leases

A. The Company is not involved in material lease obligations.

B. Leasing as a significant part of lessor's business activities

Not applicable

Note 16- Information about Financial Instruments with Off-Balance Sheet Risk and Financial Instruments with Concentrations of Credit Risk

The Company is not exposed to financial instruments with off-balance sheet risk or with concentrations of credit risk.

Note 17- Sale, Transfer and Servicing of Financial Assets and Extinguishments of Liabilities

A. Transfers of Receivables reported as sales

The Company did not have any transfers of receivables reported as sales during the year.

B. Transfers and servicing of financial assets

The Company participates in a Securities Lending Program to generate additional income, whereby certain fixed income and mortgage backed securities are loaned for a period of time from the Company's portfolio to qualifying third parties, via a lending agent. The Company does not participate in term loans; therefore, the Company does not have contractual collateral transactions that extend beyond one year from the reporting date. Borrowers of these securities provide collateral equal to or in excess of 102% of the fair value of the loaned securities. Acceptable collateral may be in the form of cash, Agency and U.S. Government securities. The fair value of the loaned securities is monitored and additional collateral is obtained if the fair value of the collateral falls below 102% of the fair value of the loaned securities. Additionally, the lending agent indemnifies the Company against borrower defaults. Cash collateral is carried as an asset with an offsetting liability on the balance sheet, as the Company can exercise discretion as to how the collateral is invested. The loaned securities remain a recorded asset of the Company.

At December 31, 2008 the total fair value of securities on loan was \$3,539,948, with corresponding collateral value of \$3,701,610 of which \$3,701,610 represents cash collateral.

C. Wash Sales

The Company did not have any wash sale transactions during the year.

Note 18-Gain or Loss from Uninsured Accident and Health Plans and the Uninsured Portion of Partially Insured Plans

A. Administrative Services Only (ASO) Plans

Not applicable

B. Administrative Services Contract (ASC) Plans

Not applicable

C. Medicare or Other Similarly Structured Cost Based Reimbursement Contracts

Not applicable

Note 19- Direct Premium Written/Produced by Managing General Agents/ Third Party Administrators

The Company has no direct premiums written through managing general agents or third party administrators.

Note 20- Other Items

A. The Company has no extraordinary items to report.

B. Troubled Debt Restructuring for Debtors

Not applicable

NOTES TO FINANCIAL STATEMENTS

C. Other Disclosures

- 1) Assets in the amount of \$8,328,251 and \$8,309,532 as of December 31, 2008 and 2007, respectively, were on deposit with government authorities or trustees as required by law.

D. The Company has no net exposure to uncollectible premium receivable balances (see Note 25).

E. Business Interruption Insurance Recoveries

The Company does not purchase business interruption coverage.

F. State Transferable Tax Credits

The Company does not hold state transferable tax credits.

G. The Company does not have exposure to sub-prime mortgage related risk.

H. The Company has not entered into Federal Home Loan Bank Agreements.

Note 21- Events Subsequent

There were no events subsequent to December 31, 2008 that would require disclosure.

Note 22- Reinsurance

- A. Excluding amounts arising pursuant to the inter-company Reinsurance Agreement, as described in Note 25, there are no unsecured reinsurance recoverables with an individual reinsurer which exceed 3% of policyholders surplus.
- B. There are no reinsurance recoverables in dispute from an individual reinsurer that exceeds 5% of the Company's surplus. In addition, the aggregate reinsurance recoverables in dispute do not exceed 10% of the Company's surplus.
- C. Reinsurance Assumed & Ceded

1. The following table sets forth the maximum return premium and commission equity due the reinsurer or the Company if all of the Company's assumed and ceded reinsurance were canceled as of December 31, 2008.

	<u>Assumed Reinsurance</u>		<u>Ceded Reinsurance</u>		<u>Net Reinsurance</u>	
	UEP	Commission Equity	UEP	Commission Equity	UEP	Commission Equity
Affiliates	\$0	\$0	\$211,124,791	\$29,496,677	\$(211,124,791)	\$(29,496,677)
All Other	0	0	0	0	0	0
Total	\$0	\$0	\$211,124,791	\$29,496,677	\$(211,124,791)	\$(29,496,677)

Direct unearned premium reserve of \$211,124,791

2. There are no sliding scale adjustments, or other profit sharing commissions for direct, assumed or ceded business.

D. The Company did not write off any uncollectible balances in 2008.

E. The Company does not have ceded commutations.

F. The Company does not have any retroactive reinsurance agreements.

G. The Company has not entered into any deposit type reinsurance agreements as of December 31, 2008.

Note 23 - Retrospectively Rated Contracts and Contracts Subject to Redetermination

The Company does not have net accrued retrospective premiums (See Note 25).

Note 24 - Changes in Incurred Losses and Loss Adjustment Expenses

The Company has no net exposure to changes in incurred losses and loss adjustment expenses (see Note 25).

NOTES TO FINANCIAL STATEMENTS

Note 25- Intercompany Pooling Arrangements

The Company is a member of the PIC Amended and Restated Reinsurance Pooling Agreement consisting of the following affiliated companies:

		<u>NAIC</u> <u>Co. #</u>	<u>Pooling</u> <u>%</u>	<u>Lines of</u> <u>Business</u>
Lead Company	Peerless Insurance Company (PIC)	24198	42.00%	All Lines
Affiliated Pool Companies:	Peerless Indemnity Insurance Company (PIIC)	18333	5.00%	All Lines
	Golden Eagle Insurance Corporation (GEIC)	10836	7.00%	All Lines (Except WC)
	Indiana Insurance Company (IIC)	22659	8.00%	All Lines
	The Netherlands Insurance Company (NIC)	24171	3.00%	All Lines
	American Fire and Casualty Company (AFCC)	24066	1.00%	All Lines
	The Ohio Casualty Insurance Company (OCIC)	24074	34.00%	All Lines
	Avomark Insurance Company (AIC)	10798	0.00%	All Lines
	American Ambassador Casualty Company (AACC)	10073	0.00%	All Lines
	America First Insurance Company (AFIC)	12696	0.00%	All Lines
	America First Lloyd's Insurance Company (AFLIC)	11526	0.00%	All Lines
	Colorado Casualty Insurance Company (CCIC)	41785	0.00%	All Lines
	Consolidated Insurance Company (CIC)	22640	0.00%	All Lines
	Excelsior Insurance Company (EIC)	11045	0.00%	All Lines
	Globe American Casualty Company (GACC)	11312	0.00%	All Lines
	Hawkeye-Security Insurance Company (HSIC)	36919	0.00%	All Lines
	Liberty Mutual Mid-Atlantic Insurance Company (LMMAIC)	14486	0.00%	All Lines
	Mid-American Fire & Casualty Company (MAFCC)	23507	0.00%	All Lines
	Montgomery Mutual Insurance Company (MMC)	14613	0.00%	All Lines
	The Midwestern Indemnity Insurance Company (MWIC)	23515	0.00%	All Lines
	National Insurance Association (NIA)	27944	0.00%	All Lines
	Ohio Casualty of New Jersey, Inc. (OCNJ)	10937	0.00%	All Lines
	Ohio Security Insurance Company (OSIC)	24082	0.00%	All Lines
	West American Insurance Company (WAIC)	44393	0.00%	All Lines
			100.00%	
100% Quota Share Affiliated Companies:	Liberty Northwest Insurance Corporation (LNW)	41939	0.00%	All Lines
	Bridgefield Casualty Insurance Company (BCIC)	10335	0.00%	All Lines
	Bridgefield Employers Insurance Company (BEIC)	10701	0.00%	All Lines
	North Pacific Insurance Company (NPIC)	23892	0.00%	All Lines
	Oregon Automobile Insurance Company (OAIC)	23922	0.00%	All Lines

Under the terms of the Reinsurance Agreements, the sequence of transactions is as follows:

- (a) Each Affiliated Pool Company cedes its net underwriting activity to the Lead Company.
- (b) Each 100% Quota Share Affiliated Company cedes its net underwriting activity to the Lead Company.
- (c) After recording the assumed affiliate transactions noted above, the Lead Company records 100% of its external assumed and ceded reinsurance activity.
- (d) The Lead Company's remaining underwriting activity, after processing all internal and external reinsurance is retroceded to the pool members in accordance with each company's pool participation percentage, as noted above.
- (e) There were no members that are parties to reinsurance agreements with non-affiliated reinsurers covering business subject to the pooling agreement that have a contractual right of direct recovery from the non-affiliated reinsurer per the terms of such reinsurance agreements.
- (f) There were no discrepancies between entries regarding pooled business on the assumed and ceded reinsurance schedules of the Lead Company and corresponding entries on the assumed and ceded reinsurance schedules of other pooled participants.
- (g) The write-off of uncollectible reinsurance is pooled and the Provision for Reinsurance is recognized by the entity placing the outbound external reinsurance.
- (h) At December 31, 2008, the Company had \$1,191,000 due from the lead company in the Peerless Pool.

NOTES TO FINANCIAL STATEMENTS

Effective January 1, 2008, the PIC Amended and Restated Reinsurance Pooling Agreement was amended to adjust pooling percentages and add the affiliates noted below. Concurrently, each company noted below terminated their existing inter-company reinsurance agreements.

American Fire and Casualty Company
Avomark Insurance Company
National Insurance Association
Ohio Casualty of New Jersey, Inc.
Ohio Security Insurance Company
The Ohio Casualty Insurance Company
West American Insurance Company

Effective January 1, 2008 Bridgefield Employers Insurance Company and Bridgefield Casualty Insurance Company novated their 100% quota share agreements with Liberty Mutual Insurance Company to substitute PIC as the reinsurer.

Effective January 1, 2009, the PIC Amended and Restated Reinsurance Pooling Agreement was amended to adjust pooling percentages and add the affiliates noted below. Concurrently, each company noted below terminated their existing inter-company reinsurance agreements.

American Economy Insurance Company
American States Insurance Company
American States Insurance Company of Texas
American States Lloyds Insurance Company
American States Preferred Insurance Company
First National Insurance Company of America
General Insurance Company of America
Insurance Company of Illinois
Safeco Insurance Company of America
Safeco Insurance Company of Illinois
Safeco Insurance Company of Indiana
Safeco Insurance Company of Oregon
Safeco Lloyds Insurance Company
Safeco National Insurance Company
Safeco Surplus Lines Insurance Company

Therefore, effective January 1, 2009, the PIC Amended and Restated Reinsurance Pooling Agreement consisted of the following affiliated companies:

		<u>NAIC</u> <u>Co. #</u>	<u>Pooling</u> <u>%</u>	<u>Lines of</u> <u>Business</u>
Lead Company	Peerless Insurance Company	24198	25.20%	All Lines
Affiliated Pool Companies:	America First Insurance Company	12696	0.00%	All Lines
	America First Lloyd's Insurance Company	11526	0.00%	All Lines
	American Ambassador Casualty Company	10073	0.00%	All Lines
	Colorado Casualty Insurance Company	41785	0.00%	All Lines
	Consolidated Insurance Company	22640	0.00%	All Lines
	Excelsior Insurance Company	11045	0.00%	All Lines
	Globe American Casualty Company	11312	0.00%	All Lines
	Golden Eagle Insurance Corporation	10836	3.00%	All Lines (Except WC)
	Hawkeye-Security Insurance Company	36919	0.00%	All Lines
	Indiana Insurance Company	22659	4.80%	All Lines
	Liberty Mutual Mid-Atlantic Insurance Company	14486	0.00%	All Lines
	Mid-American Fire & Casualty Company	23507	0.00%	All Lines
	The Midwestern Indemnity Company	23515	0.00%	All Lines
	Montgomery Mutual Insurance Company	14613	0.00%	All Lines
	The Netherlands Insurance Company	24171	1.80%	All Lines
	Peerless Indemnity Insurance Company	18333	3.00%	All Lines
	National Insurance Association	27944	0.00%	All Lines
	The Ohio Casualty Insurance Company	24074	20.40%	All Lines
	Avomark Insurance Company	10798	0.00%	All Lines
	West American Insurance Company	44393	0.00%	All Lines
	American Fire and Casualty Company	24066	0.60%	All Lines
	Ohio Security Insurance Company	24082	0.00%	All Lines
	Ohio Casualty of New Jersey, Inc.	10937	0.00%	All Lines
	Insurance Company of Illinois (ICI)	26700	0.00%	All Lines
	Safeco Insurance Company of Illinois (SICIL)	39012	2.00%	All Lines
	American Economy Insurance Company (AEIC)	19690	5.60%	All Lines

NOTES TO FINANCIAL STATEMENTS

American States Insurance Company (ASIC)	19704	7.60%	All Lines
American States Preferred Insurance Company (ASPIC)	37214	0.80%	All Lines
Safeco Insurance Company of Indiana (SICIN)	11215	0.00%	All Lines
Safeco National Insurance Company (SNIC)	24759	0.00%	All Lines
Safeco Insurance Company of Oregon (SICO)	11071	0.00%	All Lines
American States Lloyds Insurance Company (ASLIC)	31933	0.00%	All Lines
Safeco Lloyds Insurance Company (SLIC)	11070	0.00%	All Lines
First National Insurance Company of America (FNICA)	24724	0.80%	All Lines
General Insurance Company of America (GICA)	24732	9.20%	All Lines
Safeco Insurance Company of America (SICA)	24740	15.20%	All Lines
Safeco Surplus Lines Insurance Company (SSLIC)	11100	0.00%	All Lines
American States Insurance Company of Texas (ASICT)	19712	0.00%	All Lines
		100.00%	

100% Quota
Share Affiliated
Companies:

Liberty Northwest Insurance Corporation (LNW)	41939	0.00%	All Lines
Bridgefield Casualty Insurance Company (BCIC)	10335	0.00%	All Lines
Bridgefield Employers Insurance Company (BEIC)	10701	0.00%	All Lines
North Pacific Insurance Company (NPIC)	23892	0.00%	All Lines
Oregon Automobile Insurance Company (OAIC)	23922	0.00%	All Lines

Note 26- Structured Settlements

- A. The Company has no net exposure to contingent liabilities from the purchase of annuities (see Note 25).
- B. Not applicable

Note 27 - Health Care Receivables

Not applicable

Note 28 - Participating Policies

Not applicable

Note 29 – Premium Deficiency Reserves

The Company has no net exposure to liabilities related to premium deficiency reserves (see Note 25).

Note 30- High Dollar Deductible Policies

As a result of the Company's participation in the PIC Amended and Restated Pooling Agreement (see Note 25) the Company does not have any net high dollar deductible policy liabilities.

Note 31- Discounting of Liabilities for Unpaid Losses and Unpaid Loss Adjustment Expenses

Not applicable

Note 32 - Asbestos/Environmental Reserves

The Company has no net exposure to asbestos and environmental claims (see Note 25).

Note 33- Subscriber Savings Accounts

The Company is not a reciprocal insurance company.

Note 34 - Multiple Peril Crop Insurance

Not applicable

GENERAL INTERROGATORIES

PART 1 – COMMON INTERROGATORIES

GENERAL

- 1.1 Is the reporting entity a member of an Insurance Holding Company System consisting of two or more affiliated persons, one or more of which is an insurer? Yes No]
- 1.2 If yes, did the reporting entity register and file with its domiciliary State Insurance Commissioner, Director or Superintendent or with such regulatory official of the state of domicile of the principal insurer in the Holding Company System, a registration statement providing disclosure substantially similar to the standards adopted by the National Association of Insurance Commissioners (NAIC) in its Model Insurance Holding Company System Regulatory Act and model regulations pertaining thereto, or is the reporting entity subject to standards and disclosure requirements substantially similar to those required by such Act and regulations? Yes No N/A]
- 1.3 State Regulating? _____ Indiana _____
- 2.1 Has any change been made during the year of this statement in the charter, by-laws, articles of incorporation, or deed of settlement of the reporting entity? Yes No]
- 2.2 If yes, date of change: _____ 01/01/2008 _____
- 3.1 State as of what date the latest financial examination of the reporting entity was made or is being made. _____ 12/31/2005 _____
- 3.2 State the as of date that the latest financial examination report became available from either the state of domicile or the reporting entity. This date should be the date of the examined balance sheet and not the date the report was completed or released. _____ 12/31/2005 _____
- 3.3 State as of what date the latest financial examination report became available to other states or the public from either the state of domicile or the reporting entity. This is the release date or completion date of the examination report and not the date of the examination (balance sheet date). _____ 01/24/2007 _____
- 3.4 By what department or departments?
 Indiana Department of Insurance

- 3.5 Have all financial statement adjustments within the latest financial examination report been accounted for in a subsequent financial statement filed with departments? Yes No N/A]
- 3.6 Have all of the recommendations within the latest financial examination report been complied with? Yes No N/A]
- 4.1 During the period covered by this statement, did any agent, broker, sales representative, non-affiliated sales/service organization or any combination thereof under common control (other than salaried employees of the reporting entity) receive credit or commissions for or control a substantial part (more than 20 percent of any major line of business measured on direct premiums) of:
- 4.11 sales of new business? Yes No]
- 4.12 renewals? Yes No]
- 4.2 During the period covered by this statement, did any sales/service organization owned in whole or in part by the reporting entity or an affiliate, receive credit or commissions for or control a substantial part (more than 20 percent of any major line of business measured on direct premiums) of:
- 4.21 sales of new business? Yes No]
- 4.22 renewals? Yes No]
- 5.1 Has the reporting entity been a party to a merger or consolidation during the period covered by this statement? Yes No]
- 5.2 If yes, provide the name of the entity, NAIC Company Code, and state of domicile (use two letter state abbreviation) for any entity that has ceased to exist as a result of the merger or consolidation.

1 Name of Entity	2 NAIC Company Code	3 State of Domicile
.....
.....

- 6.1 Has the reporting entity had any Certificates of Authority, licenses or registrations (including corporate registration, if applicable) suspended or revoked by any governmental entity during the reporting period? Yes No]

GENERAL INTERROGATORIES

6.2 If yes, give full information:

.....

7.1 Does any foreign (non-United States) person or entity directly or indirectly control 10% or more of the reporting entity?

Yes [] No [X]

7.2 If yes,

7.21 State the percentage of foreign control.

7.22 State the nationality(s) of the foreign person(s) or entity(s); or if the entity is a mutual or reciprocal, the nationality of its manager or attorney-in-fact and identify the type of entity(s) (e.g., individual, corporation, government, manager or attorney-in-fact).

1 Nationality	2 Type of Entity
.....
.....

8.1 Is the company a subsidiary of a bank holding company regulated by the Federal Reserve Board?

Yes [] No [X]

8.2 If response to 8.1 is yes, please identify the name of the bank holding company.

.....

8.3 Is the company affiliated with one or more banks, thrifts or securities firms?

Yes [] No [X]

8.4 If response to 8.3 is yes, please provide the names and locations (city and state of the main office) of any affiliates regulated by a federal financial regulatory services agency [i.e., the Federal Reserve Board (FRB), the Office of the Comptroller of the Currency (OCC), the Office of Thrift Supervision (OTS), the Federal Deposit Insurance Corporation (FDIC) and the Securities Exchange Commission (SEC)] and identify the affiliate's primary federal regulator.

1 Affiliate Name	2 Location (City, State)	3 FRB	4 OCC	5 OTS	6 FDIC	7 SEC
.....
.....

9. What is the name and address of the independent certified public accountant or accounting firm retained to conduct the annual audit?

Ernst & Young, LLP
 200 Clarendon Street
 Boston MA 02116

10. What is the name, address and affiliation (officer/employee of the reporting entity or actuary/consultant associated with an actuarial consulting firm) of the individual providing the statement of actuarial opinion/certification?

William M. Finn, FCAS, MAAA
 62 Maple Avenue, Keene, NH 03431
 Vice President & Chief Actuary of Liberty Mutual Agency Markets

11.1 Does the reporting entity own any securities of a real estate holding company or otherwise hold real estate indirectly?

Yes [] No [X]

11.11 Name of real estate holding company

11.12 Number of parcels involved

11.13 Total book/adjusted carrying value

\$ _____

11.2 If yes, provide explanation:

.....

GENERAL INTERROGATORIES

12. FOR UNITED STATES BRANCHES OF ALIEN REPORTING ENTITIES ONLY:

12.1 What changes have been made during the year in the United States manager or the United States trustees of the reporting entity?

.....

12.2 Does this statement contain all business transacted for the reporting entity through its United States Branch on risks wherever located?

Yes No

12.3 Have there been any changes made to any of the trust indentures during the year?

Yes No

12.4 If answer to (12.3) is yes, has the domiciliary or entry state approved the changes?

Yes No N/A

13.1 Are the senior officers (principal executive officer, principal financial officer, principal accounting officer or controller, or persons performing similar functions) of the reporting entity subject to a code of ethics, which includes the following standards?

- (a) Honest and ethical conduct, including the ethical handling of actual or apparent conflicts of interest between personal and professional relationships;
- (b) Full, fair, accurate, timely and understandable disclosure in the periodic reports required to be filed by the reporting entity;
- (c) Compliance with applicable governmental laws, rules, and regulations;
- (d) The prompt internal reporting of violations to an appropriate person or persons identified in the code; and
- (e) Accountability for adherence to the code.

Yes No

13.11 If the response to 13.1 is no, please explain:

.....

13.2 Has the code of ethics for senior managers been amended?

Yes No

13.21 If the response to 13.2 is yes, provide information related to amendment(s).

Liberty Mutual Group's Code of Business Ethics and Conduct was revised effective March 2008. It continues to contain all substantive areas of company policy and requirements included in the prior Code, but has been rewritten to enhance clarity and readability and provide additional practical guidance. This applies to all Liberty Mutual Group companies.

.....

13.3 Have any provisions of the code of ethics been waived for any of the specified officers?

Yes No

13.31 If the response to 13.3 is yes, provide the nature of any waiver(s).

.....

BOARD OF DIRECTORS

14. Is the purchase or sale of all investments of the reporting entity passed upon either by the board of directors or a subordinate committee thereof?

Yes No

15. Does the reporting entity keep a complete permanent record of the proceedings of its board of directors and all subordinate committees thereof?

Yes No

16. Has the reporting entity an established procedure for disclosure to its board of directors or trustees of any material interest or affiliation on the part of any of its officers, directors, trustees or responsible employees that is in conflict or is likely to conflict with the official duties of such person?

Yes No

FINANCIAL

17. Has this statement been prepared using a basis of accounting other than Statutory Accounting Principles (e.g., Generally Accepted Accounting Principles)?

Yes No

18.1 Total amount loaned during the year (inclusive of Separate Accounts, exclusive of policy loans):

18.11 To directors or other officers	\$	0
18.12 To stockholders not officers	\$	0
18.13 Trustees, supreme or grand (Fraternal only)	\$	0

GENERAL INTERROGATORIES

- 18.2 Total amount of loans outstanding at the end of year (inclusive of Separate Accounts, exclusive of policy loans):
- | | | | |
|--|---|----|---|
| | 18.21 To directors or other officers | \$ | 0 |
| | 18.22 To stockholders not officers | \$ | 0 |
| | 18.23 Trustees, supreme or grand (Fraternal only) | \$ | 0 |
- 19.1 Were any assets reported in this statement subject to a contractual obligation to transfer to another party without the liability for such obligation being reported in the statement? Yes [] No [X]
- 19.2 If yes, state the amount thereof at December 31 of the current year:
- | | | | |
|--|----------------------------|----|--|
| | 19.21 Rented from others | \$ | |
| | 19.22 Borrowed from others | \$ | |
| | 19.23 Leased from others | \$ | |
| | 19.24 Other | \$ | |
- 20.1 Does this statement include payments for assessments as described in the Annual Statement Instructions other than guaranty fund or guaranty association assessments? Yes [] No [X]
- 20.2 If answer is yes:
- | | | | |
|--|--|----|--|
| | 20.21 Amount paid as losses or risk adjustment | \$ | |
| | 20.22 Amount paid as expenses | \$ | |
| | 20.23 Other amounts paid | \$ | |
- 21.1 Does the reporting entity report any amounts due from parent, subsidiaries or affiliates on Page 2 of this statement? Yes [X] No []
- 21.2 If yes, indicate any amounts receivable from parent included in the Page 2 amount: \$ _____

INVESTMENT

- 22.1 Were all the stocks, bonds and other securities owned December 31 of current year, over which the reporting entity has exclusive control, in the actual possession of the reporting entity on said date (other than securities lending programs addressed in 22.3)? Yes [X] No []
- 22.2 If no, give full and complete information relating thereto:

- 22.3 For security lending programs, provide a description of the program including value for collateral and amount of loaned securities, and whether collateral is carried on or off-balance sheet. (an alternative is to reference Note 16 where this information is also provided)
 Please reference Note 17B

- 22.4 Does the company's security lending program meet the requirements for a conforming program as outlined in the Risk-Based Capital Instructions? Yes [X] No []
- 22.5 If answer to 22.4 is yes, report amount of collateral. \$ 3,701,610
- 22.6 If answer to 22.4 is no, report amount of collateral. \$ _____
- 23.1 Were any of the stocks, bonds or other assets of the reporting entity owned at December 31 of the current year not exclusively under the control of the reporting entity or has the reporting entity sold or transferred any assets subject to a put option contract that is currently in force? (Exclude securities subject to Interrogatory 19.1 and 22.3.) Yes [X] No []
- 23.2 If yes, state the amount thereof at December 31 of the current year:
- | | | | |
|--|--|----|-----------|
| | 23.21 Subject to repurchase agreements | \$ | |
| | 23.22 Subject to reverse repurchase agreements | \$ | |
| | 23.23 Subject to dollar repurchase agreements | \$ | |
| | 23.24 Subject to reverse dollar repurchase agreements | \$ | |
| | 23.25 Pledged as collateral | \$ | |
| | 23.26 Placed under option agreements | \$ | |
| | 23.27 Letter stock or securities restricted as to sale | \$ | |
| | 23.28 On deposit with state or other regulatory body | \$ | 8,328,250 |
| | 23.29 Other | \$ | 0 |

GENERAL INTERROGATORIES

23.3 For category (23.27) provide the following:

1 Nature of Restriction	2 Description	3 Amount
.....
.....

24.1 Does the reporting entity have any hedging transactions reported on Schedule DB? Yes [] No [X]

24.2 If yes, has a comprehensive description of the hedging program been made available to the domiciliary state? Yes [] No [] N/A [X]
 If no, attach a description with this statement.

25.1 Were any preferred stocks or bonds owned as of December 31 of the current year mandatorily convertible into equity, or, at the option of the issuer, convertible into equity? Yes [] No [X]

25.2 If yes, state the amount thereof at December 31 of the current year. \$ _____

26. Excluding items in Schedule E-Part 3-Special Deposits, real estate, mortgage loans and investments held physically in the reporting entity's offices, vaults or safety deposit boxes, were all stocks, bonds and other securities, owned throughout the current year held pursuant to a custodial agreement with a qualified bank or trust company in accordance with Section 3, III Conducting Examinations, F – Custodial or Safekeeping agreements of the NAIC Financial Condition Examiners Handbook? Yes [X] No []

26.01 For agreements that comply with the requirements of the NAIC Financial Condition Examiners Handbook, complete the following:

1 Name of Custodian(s)	2 Custodian's Address
JP MORGAN CHASE	3 Chase Metro Tech Center Brooklyn, NY 11245
.....

26.02 For all agreements that do not comply with the requirements of the NAIC Financial Condition Examiners Handbook, provide the name, location and a complete explanation:

1 Name(s)	2 Location(s)	3 Complete Explanation(s)
.....
.....

26.03 Have there been any changes, including name changes, in the custodian(s) identified in 26.01 during the current year? Yes [] No [X]

26.04 If yes, give full and complete information relating thereto:

1 Old Custodian	2 New Custodian	3 Date of Change	4 Reason
.....
.....

26.05 Identify all investment advisors, broker/dealers or individuals acting on behalf of broker/dealers that have access to the investment accounts, handle securities and have authority to make investments on behalf of the reporting entity:

1 Central Registration Depository Number(s)	2 Name(s)	3 Address
N/A	Liberty Mutual Insurance Company	175 Berkeley St., Boston, MA 02166
N/A	Liberty Mutual Investment Advisors, LL	175 Berkeley St., Boston, MA 02166

27.1 Does the reporting entity have any diversified mutual funds reported in Schedule D – Part 2 (diversified according to the Securities and Exchange Commission (SEC) in the Investment Company Act of 1940 [Section 5 (b) (1)])? Yes [] No [X]

GENERAL INTERROGATORIES

27.2 If yes, complete the following schedule:

1 CUSIP #	2 Name of Mutual Fund	3 Book/Adjusted Carrying Value
.....	0
.....	0
.....	0
27.2999 TOTAL		0

27.3 For each mutual fund listed in the table above, complete the following schedule:

1 Name of Mutual Fund (from above table)	2 Name of Significant Holding of the Mutual Fund	3 Amount of Mutual Fund's Book/Adjusted Carrying Value Attributable to the Holding	4 Date of Valuation
.....	0
.....	0
.....	0

28. Provide the following information for all short-term and long-term bonds and all preferred stocks. Do not substitute amortized value or statement value for fair value.

	1 Statement (Admitted) Value	2 Fair Value	3 Excess of Statement over Fair Value (-), or Fair Value over Statement (+)
28.1 Bonds	255,366,921	246,024,357	(9,342,564)
28.2 Preferred stocks	0	0	0
28.3 Totals	255,366,921	246,024,357	(9,342,564)

28.4 Describe the sources or methods utilized in determining the fair values:
IDC, Bloomberg, NAIC-SVO, Broker Quotes, Analytically Determined.

29.1 Have all the filing requirements of the Purposes and Procedures Manual of the NAIC Securities Valuation Office been followed?

Yes No

29.2 If no, list exceptions:

.....

OTHER

30.1 Amount of payments to Trade associations, service organizations and statistical or Rating Bureaus, if any?

\$ _____ 0

30.2 List the name of the organization and the amount paid if any such payment represented 25% or more of the total payments to trade associations, service organizations and statistical or rating bureaus during the period covered by this statement.

1 Name	2 Amount Paid
.....	0
.....	0
.....	0

31.1 Amount of payments for legal expenses, if any?

\$ _____ 0

31.2 List the name of the firm and the amount paid if any such payment represented 25% or more of the total payments for legal expenses during the period covered by this statement.

1 Name	2 Amount Paid
.....	0
.....	0
.....	0

GENERAL INTERROGATORIES

32.1 Amount of payments for expenditures in connection with matters before legislative bodies, officers or departments of government, if any?

\$ _____ 0

32.2 List the name of the firm and the amount paid if any such payment represented 25% or more of the total payment expenditures in connection with matters before legislative bodies, officers or departments of government during the period covered by this statement.

1 Name	2 Amount Paid
	0
	0
	0

GENERAL INTERROGATORIES

PART 2 – PROPERTY & CASUALTY INTERROGATORIES

1.1 Does the reporting entity have any direct Medicare Supplement Insurance in force? Yes [] No [X]

1.2 If yes, indicate premium earned on U.S. business only. \$ _____

1.3 What portion of Item (1.2) is not reported on the Medicare Supplement Insurance Experience Exhibit? \$ _____

1.31 Reason for excluding

.....

1.4 Indicate amount of earned premium attributable to Canadian and/or Other Alien not included in Item (1.2) above. \$ _____

1.5 Indicate total incurred claims on all Medicare Supplement insurance. \$ _____

1.6 Individual policies:

Most current three years:

1.61 Total premium earned \$ _____

1.62 Total incurred claims \$ _____

1.63 Number of covered lives _____

All years prior to most current three years:

1.64 Total premium earned \$ _____

1.65 Total incurred claims \$ _____

1.66 Number of covered lives _____

1.7 Group policies:

Most current three years:

1.71 Total premium earned \$ _____

1.72 Total incurred claims \$ _____

1.73 Number of covered lives _____

All years prior to most current three years:

1.74 Total premium earned \$ _____

1.75 Total incurred claims \$ _____

1.76 Number of covered lives _____

2. Health Test:

	1	2
	Current Year	Prior Year
2.1 Premium Numerator	\$ 0	\$ 0
2.2 Premium Denominator	\$ 0	\$ 0
2.3 Premium Ratio (2.1/2.2)	0.00	0.00
2.4 Reserve Numerator	\$ 0	\$ 0
2.5 Reserve Denominator	\$ 0	\$ 0
2.6 Reserve Ratio (2.4/2.5)	0.00	0.00

3.1 Does the reporting entity issue both participating and non-participating policies? Yes [X] No []

3.2 If yes, state the amount of calendar year premiums written on:

3.21 Participating policies \$ 4,143,416

3.22 Non-participating policies \$ 497,107,065

4. For Mutual reporting entities and Reciprocal Exchanges only:

4.1 Does the reporting entity issue assessable policies? Yes [] No [X]

4.2 Does the reporting entity issue non-assessable policies? Yes [] No [X]

4.3 If assessable policies are issued, what is the extent of the contingent liability of the policyholders? _____

4.4 Total amount of assessments paid or ordered to be paid during the year on deposit notes or contingent premiums. \$ _____

5. For Reciprocal Exchanges Only:

5.1 Does the exchange appoint local agents? Yes [] No [X]

5.2 If yes, is the commission paid:

5.21 Out of Attorney's-in-fact compensation Yes [] No [] N/A [X]

5.22 As a direct expense of the exchange Yes [] No [] N/A [X]

5.3 What expenses of the Exchange are not paid out of the compensation of the Attorney-in-fact? _____

5.4 Has any Attorney-in-fact compensation, contingent on fulfillment of certain conditions, been deferred? Yes [] No [X]

5.5 If yes, give full information

.....

6.1 What provision has this reporting entity made to protect itself from an excessive loss in the event of a catastrophe under a workers' compensation contract issued without limit loss:

In 2008 the Company purchased Workers' Compensation Catastrophe reinsurance separately and/or with the Liberty Mutual Group with limits of \$1,038m part of \$1,175m xs \$25m.

.....

GENERAL INTERROGATORIES

PART 2 – PROPERTY & CASUALTY INTERROGATORIES

- 6.2 Describe the method used to estimate this reporting entity's probable maximum insurance loss, and identify the type of insured exposures comprising that probable maximum loss, the locations of concentrations of those exposures and the external resources (such as consulting firms or computer software models), if any, used in the estimation process:
 The Company employs industry recognized catastrophe modeling software to estimate the Probable Maximum Loss. For property exposures, we employ RiskLink V7.0 from RMS and AIR Classic/2 v8.0 For WC, Liberty Mutual utilizes RiskLink v7.0 from RMS.
- 6.3 What provision has this reporting entity made (such as a catastrophic reinsurance program) to protect itself from an excessive loss arising from the types and concentrations of insured exposures comprising its probable maximum property insurance loss?
 The Company has in force \$700m part of \$800m xs \$50m of traditional XOL reins. Additionally, traditional XOL reins. with limits of \$20m xs \$30m was purchased for risks in the Midwest. Also, in Dec 2008 the Company purchased a 31.725% QS treaty for its US HO portfolio.
- 6.4 Does the reporting entity carry catastrophe reinsurance protection for at least one reinstatement, in an amount sufficient to cover its estimated probable maximum loss attributable to a single loss event or occurrence? Yes [X] No []
- 6.5 If no, describe any arrangements or mechanisms employed by the reporting entity to supplement its catastrophe reinsurance program or to hedge its exposure to unreinsured catastrophe loss
- 7.1 Has the reporting entity reinsured any risk with any other entity under a quota share reinsurance contract that includes a provision that would limit the reinsurer's losses below the stated quota share percentage (e.g., a deductible, a loss ratio corridor, a loss cap, an aggregate limit or any similar provisions)? Yes [X] No []
- 7.2 If yes, indicate the number of reinsurance contracts containing such provisions. 1
- 7.3 If yes, does the amount of reinsurance credit taken reflect the reduction in quota share coverage caused by any applicable limiting provision(s)? Yes [] No [X]
- 8.1 Has this reporting entity reinsured any risk with any other entity and agreed to release such entity from liability, in whole or in part, from any loss that may occur on this risk, or portion thereof, reinsured? Yes [] No [X]
- 8.2 If yes, give full information
- 9.1 Has the reporting entity ceded any risk under any reinsurance contract (or under multiple contracts with the same reinsurer or its affiliates) for which during the period covered by the statement: (i) it recorded a positive or negative underwriting result greater than 5% of prior year-end surplus as regards policyholders or it reported calendar year written premium ceded or year-end loss and loss expense reserves ceded greater than 5% of prior year-end surplus as regards policyholders; (ii) it accounted for that contract as reinsurance and not as a deposit; and (iii) the contract(s) contain one or more of the following features or other features that would have similar results:
 (a) A contract term longer than two years and the contract is noncancellable by the reporting entity during the contract term;
 (b) A limited or conditional cancellation provision under which cancellation triggers an obligation by the reporting entity, or an affiliate of the reporting entity, to enter into a new reinsurance contract with the reinsurer, or an affiliate of the reinsurer;
 (c) Aggregate stop loss reinsurance coverage;
 (d) A unilateral right by either party (or both parties) to commute the reinsurance contract, whether conditional or not, except for such provisions which are only triggered by a decline in the credit status of the other party;
 (e) A provision permitting reporting of losses, or payment of losses, less frequently than on a quarterly basis (unless there is no activity during the period); or
 (f) Payment schedule, accumulating retentions from multiple years or any features inherently designed to delay timing of the reimbursement to the ceding entity. Yes [] No [X]
- 9.2 Has the reporting entity during the period covered by the statement ceded any risk under any reinsurance contract (or under multiple contracts with the same reinsurer or its affiliates), for which, during the period covered by the statement, it recorded a positive or negative underwriting result greater than 5% of prior year-end surplus as regards policyholders or it reported calendar year written premium ceded or year-end loss and loss expense reserves ceded greater than 5% of prior year-end surplus as regards policyholders; excluding cessions to approved pooling arrangements or to captive insurance companies that are directly or indirectly controlling, controlled by, or under common control with (i) one or more unaffiliated policyholders of the reporting entity, or (ii) an association of which one or more unaffiliated policyholders of the reporting entity is a member where:
 (a) The written premium ceded to the reinsurer by the reporting entity or its affiliates represents fifty percent (50%) or more of the entire direct and assumed premium written by the reinsurer based on its most recently available financial statement; or
 (b) Twenty-five percent (25%) or more of the written premium ceded to the reinsurer has been retroceded back to the reporting entity or its affiliates in a separate reinsurance contract. Yes [] No [X]
- 9.3 If yes to 9.1 or 9.2, please provide the following information in the Reinsurance Summary Supplemental Filing for General Interrogatory 9:
 (a) The aggregate financial statement impact gross of all such ceded reinsurance contracts on the balance sheet and statement of income;
 (b) A summary of the reinsurance contract terms and indicate whether it applies to the contracts meeting the criteria in 9.1 or 9.2; and
 (c) A brief discussion of management's principle objectives in entering into the reinsurance contract including the economic purpose to be achieved.
- 9.4 Except for transactions meeting the requirements of paragraph 31 of SSAP No. 62, Property and Casualty Reinsurance, has the reporting entity ceded any risk under any reinsurance contract (or multiple contracts with the same reinsurer or its affiliates) during the period covered by the financial statement, and either:
 (a) Accounted for that contract as reinsurance (either prospective or retroactive) under statutory accounting principles ("SAP") and as a deposit under generally accepted accounting principles ("GAAP"); or
 (b) Accounted for that contract as reinsurance under GAAP and as a deposit under SAP? Yes [] No [X]
- 9.5 If yes to 9.4, explain in the Reinsurance Summary Supplemental Filing for General Interrogatory 9 (Section D) why the contract(s) is treated differently for GAAP and SAP.
- 9.6 The reporting entity is exempt from the Reinsurance Attestation Supplement under one or more of the following criteria:
 (a) The entity does not utilize reinsurance; or, Yes [] No [X]
 (b) The entity only engages in a 100% quota share contract with an affiliate and the affiliated or lead company has filed an attestation supplement; or Yes [] No [X]
 (c) The entity has no external cessions and only participates in an intercompany pool and the affiliated or lead company has filed an attestation supplement. Yes [X] No []
10. If the reporting entity has assumed risks from another entity, there should be charged on account of such reinsurances a reserve equal to that which the original entity would have been required to charge had it retained the risks. Has this been done? Yes [] No [] N/A [X]

GENERAL INTERROGATORIES

PART 2 – PROPERTY & CASUALTY INTERROGATORIES

11.1 Has the reporting entity guaranteed policies issued by any other entity and now in force: Yes [] No [X]

11.2 If yes, give full information

12.1 If the reporting entity recorded accrued retrospective premiums on insurance contracts on Line 13.3 of the asset schedule, Page 2, state the amount of corresponding liabilities recorded for:

12.11 Unpaid losses		\$	
12.12 Unpaid underwriting expenses (including loss adjustment expenses)		\$	0

12.2 Of the amount on Line 13.3, Page 2, state the amount that is secured by letters of credit, collateral and other funds? \$ _____

12.3 If the reporting entity underwrites commercial insurance risks, such as workers' compensation, are premium notes or promissory notes accepted from its insureds covering unpaid premiums and/or unpaid losses? Yes [] No [X] N/A []

12.4 If yes, provide the range of interest rates charged under such notes during the period covered by this statement:

12.41 From			
12.42 To			

12.5 Are letters of credit or collateral and other funds received from insureds being utilized by the reporting entity to secure premium notes or promissory notes taken by a reporting or to secure any of the reporting entity's reported direct unpaid loss reserves, including unpaid losses under loss deductible features of commercial policies? Yes [] No [X]

12.6 If yes, state the amount thereof at December 31 of current year:

12.61 Letters of Credit		\$	
12.62 Collateral and other funds		\$	

13.1 Largest net aggregate amount insured in any one risk (excluding workers' compensation): \$ _____ 0

13.2 Does any reinsurance contract considered in the calculation of this amount include an aggregate limit of recovery without also including a reinstatement provision? Yes [] No [X]

13.3 State the number of reinsurance contracts (excluding individual facultative risk certificates, but including facultative programs, automatic facilities or facultative obligatory contracts) considered in the calculation of the amount. _____ 1

14.1 Is the company a cedant in a multiple cedant reinsurance contract? Yes [X] No []

14.2 If yes, please describe the method of allocating and recording reinsurance among the cedants:
 Premiums and recoverables were allocated pursuant to separate intercompany agreements.

14.3 If the answer to 14.1 is yes, are the methods described in item 14.2 entirely contained in the respective multiple cedant reinsurance contracts? Yes [] No [X]

14.4 If the answer to 14.3 is no, are all the methods described in 14.2 entirely contained in written agreements? Yes [X] No []

14.5 If the answer to 14.4 is no, please explain:

15.1 Has the reporting entity guaranteed any financed premium accounts? Yes [] No [X]

15.2 If yes, give full information

16.1 Does the reporting entity write any warranty business? Yes [] No [X]
 If yes, disclose the following information for each of the following types of warranty coverage:

		1	2	3	4	5
		Direct Losses Incurred	Direct Losses Unpaid	Direct Written Premium	Direct Premium Unearned	Direct Premium Earned
16.11 Home	\$					
16.12 Products	\$					
16.13 Automobile	\$					
16.14 Other*	\$					

* Disclose type of coverage: _____

GENERAL INTERROGATORIES

PART 2 – PROPERTY & CASUALTY INTERROGATORIES

17.1 Does the reporting entity include amounts recoverable on unauthorized reinsurance in Schedule F – Part 3 that it excludes from Schedule F – Part 5.

Yes [] No [X]

Incurred but not reported losses on contracts in force prior to July 1, 1984, and not subsequently renewed are exempt from inclusion in Schedule F – Part 5. Provide the following information for this exemption:

17.11 Gross amount of unauthorized reinsurance in Schedule F – Part 3 excluded from Schedule F – Part 5	\$ _____
17.12 Unfunded portion of Interrogatory 17.11	\$ _____
17.13 Paid losses and loss adjustment expenses portion of Interrogatory 17.11	\$ _____
17.14 Case reserves portion of Interrogatory 17.11	\$ _____
17.15 Incurred but not reported portion of Interrogatory 17.11	\$ _____
17.16 Unearned premium portion of Interrogatory 17.11	\$ _____
17.17 Contingent commission portion of Interrogatory 17.11	\$ _____

Provide the following information for all other amounts included in Schedule F – Part 3 and excluded from Schedule F – Part 5, not included above.

17.18 Gross amount of unauthorized reinsurance in Schedule F – Part 3 excluded from Schedule F – Part 5	\$ _____
17.19 Unfunded portion of Interrogatory 17.18	\$ _____
17.20 Paid losses and loss adjustment expenses portion of Interrogatory 17.18	\$ _____
17.21 Case reserves portion of Interrogatory 17.18	\$ _____
17.22 Incurred but not reported portion of Interrogatory 17.18	\$ _____
17.23 Unearned premium portion of Interrogatory 17.18	\$ _____
17.24 Contingent commission portion of Interrogatory 17.18	\$ _____

FIVE – YEAR HISTORICAL DATA

Show amounts in whole dollars only, no cents; show percentages to one decimal place, i.e., 17.6.

	1	2	3	4	5
	2008	2007	2006	2005	2004
Gross Premiums Written (Page 8, Part 1B, Cols. 1, 2 & 3)					
1. Liability lines (Lines 11.1, 11.2, 16, 17.1, 17.2, 18.1, 18.2, 19.1, 19.2 & 19.3, 19.4)	177,656,032	212,899,583	227,868,486	232,734,976	542,810,984
2. Property lines (Lines 1, 2, 9, 12, 21 & 26)	102,388,093	120,256,267	123,500,945	134,769,449	256,012,732
3. Property and liability combined lines (Lines 3, 4, 5, 8, 22 & 27)	217,050,904	263,680,601	293,266,981	309,285,898	562,328,033
4. All other lines (Lines 6, 10, 13, 14, 15, 23, 24, 28, 29, 30 & 34)	4,155,930	3,449,633	3,401,843	2,955,862	24,818,050
5. Nonproportional reinsurance lines (Lines 31, 32 & 33)					
6. Total (Line 35)	501,250,959	600,286,084	648,038,255	679,746,185	1,385,969,799
Net Premiums Written (Page 8, Part 1B, Col. 6)					
7. Liability lines (Lines 11.1, 11.2, 16, 17.1, 17.2, 18.1, 18.2, 19.1, 19.2 & 19.3, 19.4)				(127,468,911)	307,389,656
8. Property lines (Lines 1, 2, 9, 12, 21 & 26)				(41,300,931)	113,090,549
9. Property and liability combined lines (Lines 3, 4, 5, 8, 22 & 27)				(119,417,641)	237,517,203
10. All other lines (Lines 6, 10, 13, 14, 15, 23, 24, 28, 29, 30 & 34)				(15,566,202)	21,976,844
11. Nonproportional reinsurance lines (Lines 31, 32 & 33)					
12. Total (Line 35)				(303,753,685)	679,974,252
Statement of Income (Page 4)					
13. Net underwriting gain (loss) (Line 8)		(708)	(1,409)		24,781,988
14. Net investment gain (loss) (Line 11)	14,858,743	14,782,280	6,572,278	139,817,024	94,055,973
15. Total other income (Line 15)	(3,632)				(7,374,293)
16. Dividends to policyholders (Line 17)					574,814
17. Federal and foreign income taxes incurred (Line 19)	4,703,151	4,168,257	5,138,853	(78,578,847)	39,568,368
18. Net income (Line 20)	10,151,960	10,613,315	1,432,016	218,395,871	71,320,486
Balance Sheet Lines (Pages 2 and 3)					
19. Total admitted assets excluding protected cell business (Page 2, Line 24, Col. 3)	298,663,914	271,633,241	264,562,056	282,205,485	1,884,055,545
20. Premiums and considerations (Page 2, Col. 3)					
20.1 In course of collection (Line 13.1)					18,719,927
20.2 Deferred and not yet due (Line 13.2)					145,150,107
20.3 Accrued retrospective premiums (Line 13.3)					
21. Total liabilities excluding protected cell business (Page 3, Line 24)	91,638,206	57,756,818	48,539,983	82,517,386	1,399,446,502
22. Losses (Page 3, Line 1)					724,765,858
23. Loss adjustment expenses (Page 3, Line 3)					182,170,032
24. Unearned premiums (Page 3, Line 9)					303,753,684
25. Capital paid up (Page 3, Lines 28 & 29)	3,100,000	3,100,000	3,100,000	3,100,000	3,100,000
26. Surplus as regards policyholders (Page 3, Line 35)	207,025,708	213,876,422	216,022,073	199,688,100	484,609,046
Cash Flow (Page 5)					
27. Net cash from operations (Line 11)	8,711,536	21,330,238	(15,306,026)	(977,278,066)	133,462,097
Risk-Based Capital Analysis					
28. Total adjusted capital	207,025,708	213,876,422	216,022,073	199,688,100	484,609,046
29. Authorized control level risk-based capital	1,891,146	3,911,910	3,899,530	3,639,941	79,601,419
Percentage Distribution of Cash, Cash Equivalents and Invested Assets (Page 2, Col. 3) (Item divided by Page 2, Line 10, Col. 3) x 100.0					
30. Bonds (Line 1)	91.5	91.3	97.3	95.6	87.7
31. Stocks (Lines 2.1 & 2.2)				1.8	11.0
32. Mortgage loans on real estate (Lines 3.1 and 3.2)					
33. Real estate (Lines 4.1, 4.2 & 4.3)					
34. Cash, cash equivalents and short-term investments (Line 5)	8.4	8.7	2.6	2.4	1.2
35. Contract loans (Line 6)					
36. Other invested assets (Line 7)	0.1	0.1	0.1	0.1	
37. Receivables for securities (Line 8)					
38. Aggregate write-ins for invested assets (Line 9)					
39. Cash, cash equivalents and invested assets (Line 10)	100.0	100.0	100.0	100.0	100.0
Investments in Parent, Subsidiaries and Affiliates					
40. Affiliated bonds, (Sch. D, Summary, Line 25, Col. 1)					
41. Affiliated preferred stocks (Sch. D, Summary, Line 39, Col. 1)					
42. Affiliated common stocks (Sch. D, Summary, Line 53, Col. 1)					
43. Affiliated short-term investments (Schedule DA Verification, Col. 5, Line 10)					
44. Affiliated mortgage loans on real estate					
45. All other affiliated					
46. Total of above Lines 40 to 45					
47. Percentage of investments in parent, subsidiaries and affiliates to surplus as regards policyholders (Line 46 above divided by Page 3, Col. 1, Line 35 x 100.0)					

FIVE – YEAR HISTORICAL DATA**(Continued)**

	1	2	3	4	5
	2008	2007	2006	2005	2004
Capital and Surplus Accounts (Page 4)					
48. Net unrealized capital gains (losses) (Line 24)	(175,618)		(3,041,841)	(86,499,128)	3,720,183
49. Dividends to stockholders (Line 35)	(21,387,643)	(13,000,000)		(214,500,000)	(47,000,000)
50. Change in surplus as regards policyholders for the year (Line 38)	(6,850,712)	(2,145,651)	16,333,971	(284,920,948)	39,901,632
Gross Losses Paid (Page 9, Part 2, Cols. 1 & 2)					
51. Liability lines (Lines 11.1, 11.2, 16, 17.1, 17.2, 18.1, 18.2, 19.1, 19.2 & 19.3, 19.4)	144,709,166	140,773,700	144,496,490	154,269,363	330,528,111
52. Property lines (Lines 1, 2, 9, 12, 21 & 26)	59,415,117	61,769,999	61,212,713	64,475,437	115,860,510
53. Property and liability combined lines (Lines 3, 4, 5, 8, 22 & 27)	149,003,304	130,957,969	136,042,809	133,235,919	246,234,460
54. All other lines (Lines 6, 10, 13, 14, 15, 23, 24, 28, 29, 30 & 34)	163,401	2,051,605	879	485	2,656,426
55. Nonproportional reinsurance lines (Lines 31, 32 & 33)					
56. Total (Line 35)	353,290,988	335,553,273	341,752,891	351,981,204	695,279,507
Net Losses Paid (Page 9, Part 2, Col. 4)					
57. Liability lines (Lines 11.1, 11.2, 16, 17.1, 17.2, 18.1, 18.2, 19.1, 19.2 & 19.3, 19.4)				557,706,977	165,211,088
58. Property lines (Lines 1, 2, 9, 12, 21 & 26)				3,810,771	50,497,050
59. Property and liability combined lines (Lines 3, 4, 5, 8, 22 & 27)				159,107,198	99,556,917
60. All other lines (Lines 6, 10, 13, 14, 15, 23, 24, 28, 29, 30 & 34)				4,140,904	2,649,519
61. Nonproportional reinsurance lines (Lines 31, 32 & 33)					
62. Total (Line 35)				724,765,850	317,914,574
Operating Percentages (Page 4) (Item divided by Page 4, Line 1) x 100.0					
63. Premiums earned (Line 1)	100.0	100.0	100.0	100.0	100.0
64. Losses incurred (Line 2)					52.9
65. Loss expenses incurred (Line 3)					10.7
66. Other underwriting expenses incurred (Line 4)					32.8
67. Net underwriting gain (loss) (Line 8)					3.7
Other Percentages					
68. Other underwriting expenses to net premiums written (Page 4, Lines 4 + 5 - 15 divided by Page 8, Part 1B, Col. 6, Line 35 x 100.0)					33.6
69. Losses and loss expenses incurred to premiums earned (Page 4, Lines 2 + 3 divided by Page 4, Line 1 x 100.0)					63.6
70. Net premiums written to policyholders' surplus (Page 8, Part 1B, Col. 6, Line 35 divided by Page 3, Line 35, Col. 1 x 100.0)				(152.1)	140.3
One Year Loss Development (000 omitted)					
71. Development in estimated losses and loss expenses incurred prior to current year (Schedule P, Part 2-Summary, Line 12, Col. 11)					(10,527)
72. Percent of development of losses and loss expenses incurred to policyholders' surplus of prior year end (Line 71 above divided by Page 4, Line 21, Col. 1 x 100.0)					(2.4)
Two Year Loss Development (000 omitted)					
73. Development in estimated losses and loss expenses incurred 2 years before the current year and prior year (Schedule P, Part 2-Summary, Line 12, Col. 12)					24,766
74. Percent of development of losses and loss expenses incurred to reported policyholders' surplus of second prior year end (Line 73 above divided by Page 4, Line 21, Col. 2 x 100.0)					6.7

NONE Schedule P - Part 1 - Summary

NONE Schedule P - Part 2, 3, 4 - Summary

SCHEDULE T - EXHIBIT OF PREMIUMS WRITTEN

Allocated By States and Territories

States, Etc.	1	Gross Premiums, Including Policy and Membership Fees Less Return Premiums and Premiums on Policies Not Taken		4	5	6	7	8	9
		2	3						
	Active Status	Direct Premiums Written	Direct Premiums Earned						
1. Alabama	AL	L	1,314,519	1,607,469		879,875	775,337	3,170,611	7,949
2. Alaska	AK	L	9,275,501	7,806,582		1,471,254	3,943,573	5,954,916	56,086
3. Arizona	AZ	L	7,203,489	8,338,370		3,683,321	869,719	6,624,888	43,557
4. Arkansas	AR	L	3,131,772	3,898,577		3,619,744	3,545,436	2,034,028	18,937
5. California	CA	N							
6. Colorado	CO	L	5,838,947	6,423,875		3,732,272	2,589,953	4,666,247	35,306
7. Connecticut	CT	L	6,900,765	8,406,242		4,554,674	490,473	15,935,040	41,727
8. Delaware	DE	L	616,763	679,928		229,637	(58,588)	906,204	3,729
9. District of Columbia	DC	L	415,956	494,181		311,247	50,598	893,800	2,515
10. Florida	FL	L	7,753,861	7,674,325		2,369,750	3,167,651	8,218,939	46,885
11. Georgia	GA	L	1,272,624	1,469,255		1,254,954	1,034,420	1,149,715	7,695
12. Hawaii	HI	N							
13. Idaho	ID	L	3,217,039	3,403,460		1,770,696	1,746,001	1,268,083	19,452
14. Illinois	IL	L	22,801,553	25,055,436		19,778,779	14,280,578	25,188,170	137,874
15. Indiana	IN	L	21,219,130	22,176,068		19,771,179	15,386,970	18,252,949	128,306
16. Iowa	IA	L	1,208,513	1,648,791		1,830,430	1,813,581	2,086,971	7,308
17. Kansas	KS	L	4,997,902	5,248,890		4,167,226	3,603,063	2,573,649	30,221
18. Kentucky	KY	L	67,283,699	70,999,304		48,868,929	47,230,264	35,315,072	406,844
19. Louisiana	LA	L	1,387,289	1,712,807		644,308	194,967	1,084,575	8,389
20. Maine	ME	N							
21. Maryland	MD	L	16,481,557	19,208,114		12,248,998	5,488,353	28,715,682	99,659
22. Massachusetts	MA	L	4,500,829	4,936,037		1,857,433	(1,616,176)	6,329,878	27,215
23. Michigan	MI	L	8,982,475	9,981,663		10,528,506	6,859,189	32,269,472	54,314
24. Minnesota	MN	L	511,039	655,248		454,729	(946,179)	1,859,531	3,090
25. Mississippi	MS	L	1,482,844	1,586,347		351,341	280,688	1,654,895	8,966
26. Missouri	MO	L	5,170,194	6,058,536		3,052,310	1,743,996	7,071,441	31,263
27. Montana	MT	L	639,395	354,078		158,420	278,417	159,950	3,866
28. Nebraska	NE	L	719,943	817,438	6,824	840,458	283,437	295,423	4,353
29. Nevada	NV	L	48,358	37,783		13,000	84,487	129,594	292
30. New Hampshire	NH	L	28,962	17,579			829	2,153	175
31. New Jersey	NJ	L	42,031,285	47,897,753	127,060	28,108,971	(2,944,906)	85,278,085	254,150
32. New Mexico	NM	L	13,387,061	13,524,615		6,061,019	8,325,214	11,781,221	80,947
33. New York	NY	L	6,815,436	7,825,086		3,128,081	1,013,027	8,740,578	41,211
34. North Carolina	NC	L	14,932,325	17,583,937		9,581,987	3,923,340	19,848,454	90,291
35. North Dakota	ND	L	84,148	118,662		28,409	(88,232)	58,473	509
36. Ohio	OH	L	68,858,759	72,343,572		54,856,635	52,582,262	29,584,900	416,368
37. Oklahoma	OK	L	18,994,757	20,343,181		13,769,734	9,147,455	9,990,960	114,856
38. Oregon	OR	L	10,317,737	10,417,006		6,629,337	5,683,424	6,804,473	62,388
39. Pennsylvania	PA	L	56,411,189	60,370,597		37,509,731	27,473,016	72,396,043	341,101
40. Rhode Island	RI	L	60,526	64,909		19,102	(89,705)	108,105	366
41. South Carolina	SC	L	11,929,511	13,799,354		14,389,417	9,567,990	11,541,280	72,134
42. South Dakota	SD	L	36,516	8,347			(68)	1,456	221
43. Tennessee	TN	L	4,383,044	4,837,639		2,845,561	2,731,300	3,380,033	26,503
44. Texas	TX	L	13,147,733	14,425,039	378,962	7,018,445	5,331,342	9,267,233	79,500
45. Utah	UT	L	6,440,709	7,258,614		3,095,331	1,917,425	4,658,650	38,945
46. Vermont	VT	N							
47. Virginia	VA	L	4,069,037	4,795,709		3,815,236	2,060,310	7,532,502	24,604
48. Washington	WA	L	14,874,481	14,687,206		6,281,427	8,388,846	13,576,007	89,941
49. West Virginia	WV	L	461,090	485,135		220,121	164,734	299,435	2,788
50. Wisconsin	WI	L	6,294,282	6,672,937	580	5,659,845	5,364,856	6,508,311	38,060
51. Wyoming	WY	L	3,315,937	3,579,981		1,727,005	2,018,087	1,415,001	20,050
52. American Samoa	AS	N							
53. Guam	GU	N							
54. Puerto Rico	PR	N							
55. U.S. Virgin Islands	VI	N							
56. Northern Mariana Islands	MP	N							
57. Canada	CN	N							
58. Aggregate Other Alien	OT	X X X							
59. Totals	(a) 47		501,250,481	541,735,662	513,426	353,188,864	255,690,754	516,583,076	3,030,906

DETAILS OF WRITE-INS									
5801.		X X X							
5802.		X X X							
5803.		X X X							
5898.	Summary of remaining write-ins for Line 58 from overflow page								
5899.	Totals (Lines 5801 through 5803 plus 5898) (Line 58 above)	X X X							

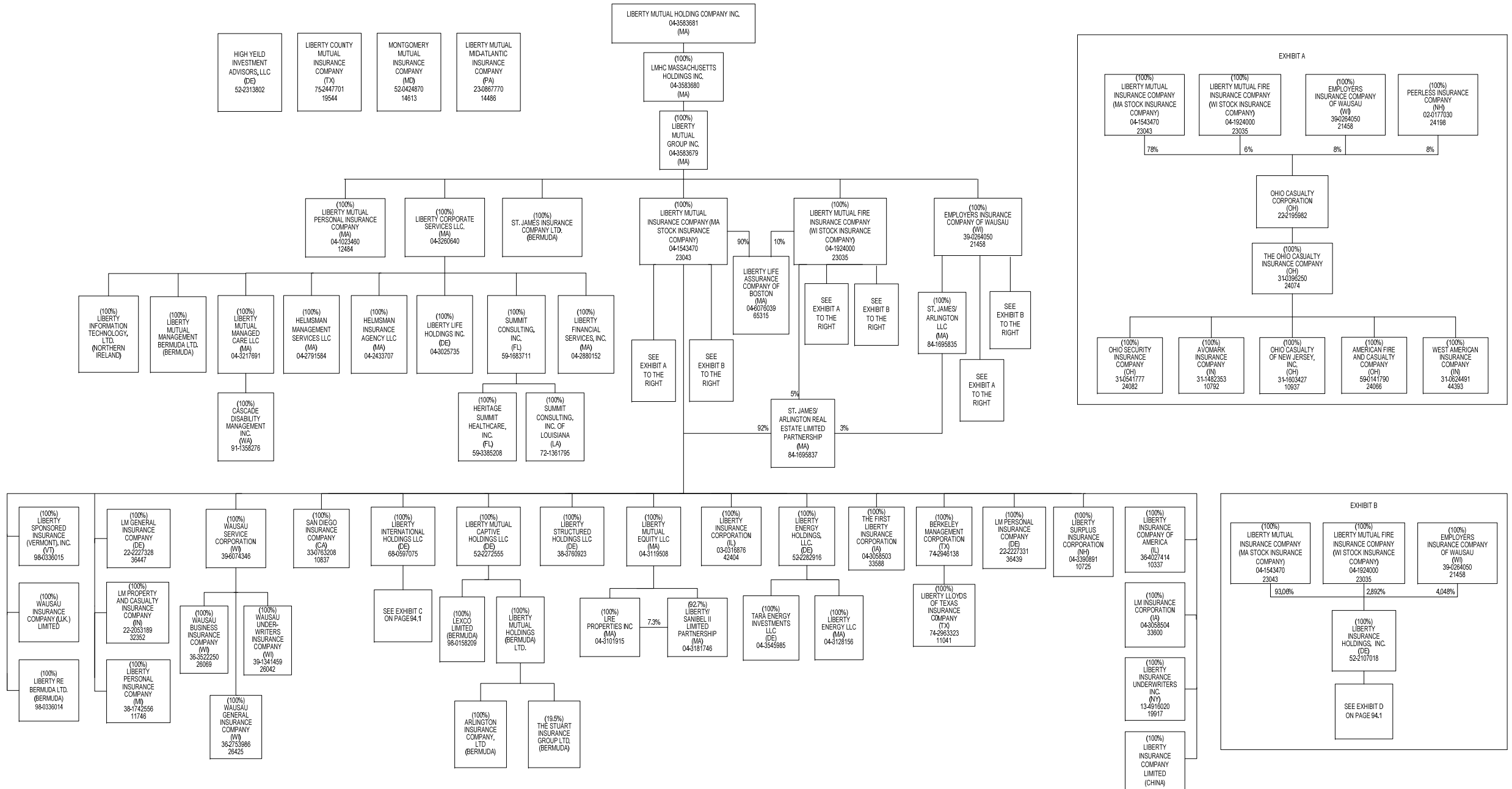
Explanation of basis of allocation of premiums by states, etc.

- *Location of coverage - Fire, Allied Lines, Homeowners Multi Peril, Commercial Multi Peril, Earthquake, Boiler and Machinery
- *States of Jurisdiction under which payrolls and resulting premiums are developed - Workers' Compensation
- *Location of Principal place of garaging of each individual car - Auto Liability, Auto Physical Damage
- *Principal Location of business or location of coverage - Liability other than Auto, Fidelity
- *Point of origin of shipment or principal location of assured - Inland Marine
- *State in which employees regularly work - Group Accident and Health
- *Location of Court - Surety
- *Address of Assured - Other Accident and Health
- *Location of Properties covered - Burglary and Theft
- *Principal Location of Assured - Ocean Marine, Credit
- *Primary Residence of Assured - Aircraft (all perils)

(a) Insert the number of L responses except for Canada and Other Alien.

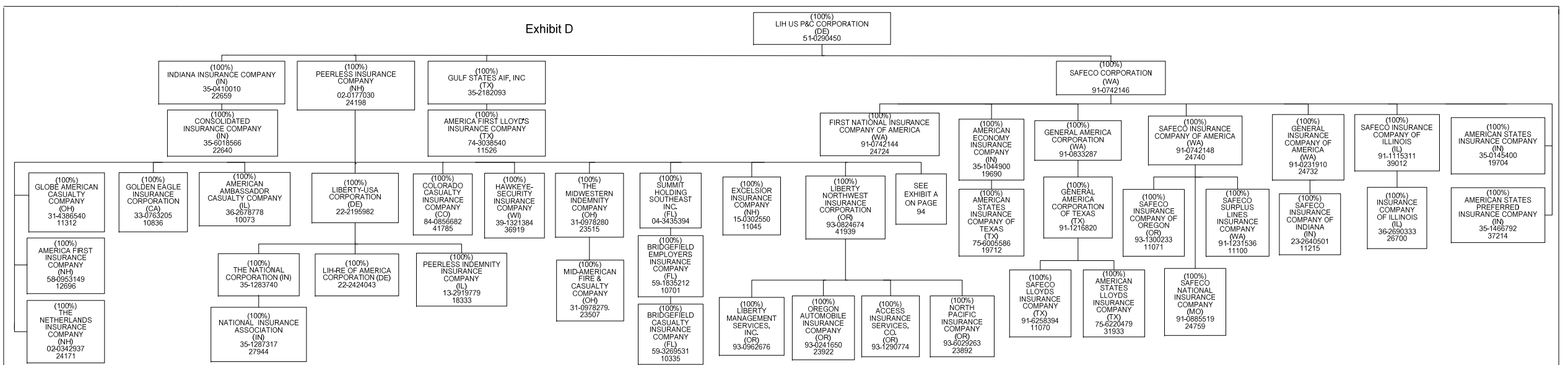
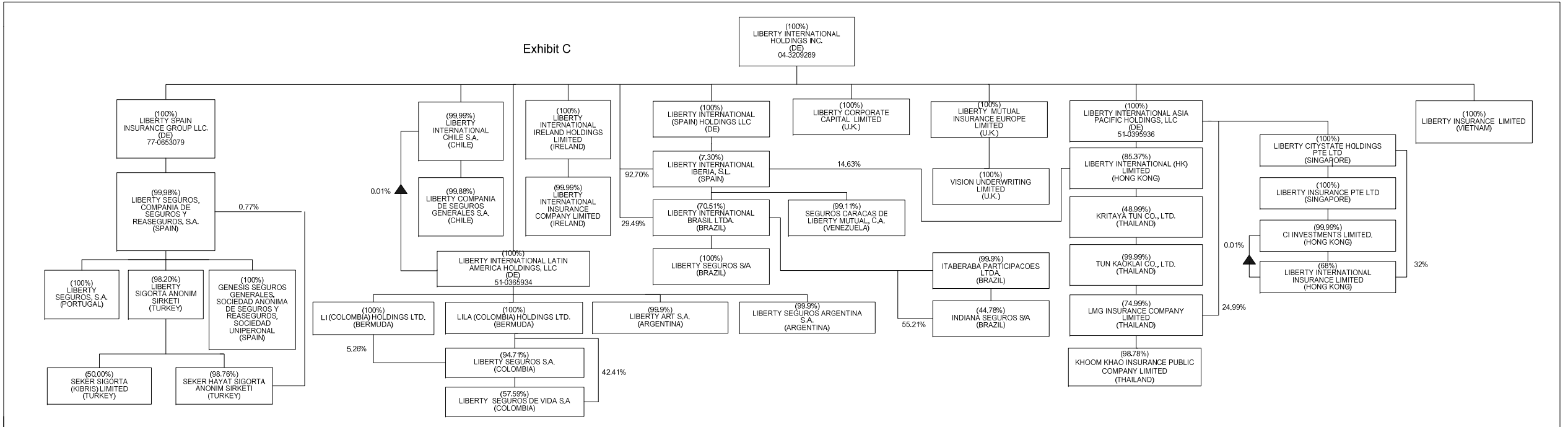
SCHEDULE Y - INFORMATION CONCERNING ACTIVITIES OF INSURER MEMBERS OF A HOLDING COMPANY GROUP

PART 1 - ORGANIZATIONAL CHART



SCHEDULE Y - INFORMATION CONCERNING ACTIVITIES OF INSURER MEMBERS OF A HOLDING COMPANY GROUP

PART 1 - ORGANIZATIONAL CHART



OVERFLOW PAGE FOR WRITE-INS

ALPHABETICAL INDEX TO PROPERTY ANNUAL STATEMENT

Assets	2	Schedule P – Part 2F – Section 2 – Medical Malpractice – Claims – Made	56
Cash Flow	5	Schedule P – Part 2G – Special Liability (Ocean Marine, Aircraft (All Perils), Boiler and Machinery)	56
Exhibit of Capital Gains (Losses)	12	Schedule P – Part 2H – Section 1 – Other Liability – Occurrence	56
Exhibit of Net Investment Income	12	Schedule P – Part 2H – Section 2 – Other Liability – Claims – Made	56
Exhibit of Nonadmitted Assets	13	Schedule P – Part 2I – Special Property (Fire, Allied Lines, Inland Marine, Earthquake, Burglary, and Theft)	57
Exhibit of Premiums and Losses (State Page)	19	Schedule P – Part 2J – Auto Physical Damage	57
Five-Year Historical Data	17	Schedule P – Part 2K – Fidelity, Surety	57
General Interrogatories	15	Schedule P – Part 2L – Other (Including Credit, Accident and Health)	57
Jurat Page	1	Schedule P – Part 2M – International	57
Liabilities, Surplus and Other Funds	3	Schedule P – Part 2N – Reinsurance	58
Notes To Financial Statements	14	Schedule P – Part 2O – Reinsurance	58
Overflow Page For Write-ins	97	Schedule P – Part 2P – Reinsurance	58
Schedule A – Part 1	E01	Schedule P – Part 2R – Section 1 – Products Liability – Occurrence	59
Schedule A – Part 2	E02	Schedule P – Part 2R – Section 2 – Products Liability – Claims-Made	59
Schedule A – Part 3	E03	Schedule P – Part 2S – Financial Guaranty/Mortgage Guaranty	59
Schedule A – Verification Between Years	SI02	Schedule P – Part 2T – Warranty	59
Schedule B – Part 1	E04	Schedule P – Part 3A – Homeowners/Farmowners	60
Schedule B – Part 2	E05	Schedule P – Part 3B – Private Passenger Auto Liability/Medical	60
Schedule B – Part 3	E06	Schedule P – Part 3C – Commercial Auto/Truck Liability/Medical	60
Schedule B – Verification Between Years	SI02	Schedule P – Part 3D – Workers' Compensation	60
Schedule BA – Part 1	E07	Schedule P – Part 3E – Commercial Multiple Peril	60
Schedule BA – Part 2	E08	Schedule P – Part 3F – Section 1 – Medical Malpractice – Occurrence	61
Schedule BA – Part 3	E09	Schedule P – Part 3F – Section 2 – Medical Malpractice – Claims-Made	61
Schedule BA – Verification Between Years	SI03	Schedule P – Part 3G – Special Liability (Ocean Marine, Aircraft (All Perils), Boiler and Machinery)	61
Schedule D – Part 1	E10	Schedule P – Part 3H – Section 1 – Other Liability – Occurrence	61
Schedule D – Part 1A – Section 1	SI05	Schedule P – Part 3H – Section 2 – Other Liability – Claims-Made	61
Schedule D – Part 1A – Section 2	SI08	Schedule P – Part 3I – Special Property (Fire, Allied Lines, Inland Marine, Earthquake, Burglary, and Theft)	62
Schedule D – Part 2 – Section 1	E11	Schedule P – Part 3J – Auto Physical Damage	62
Schedule D – Part 2 – Section 2	E12	Schedule P – Part 3K – Fidelity/Surety	62
Schedule D – Part 3	E13	Schedule P – Part 3L – Other (Including Credit, Accident and Health)	62
Schedule D – Part 4	E14	Schedule P – Part 3M – International	62
Schedule D – Part 5	E15	Schedule P – Part 3N – Reinsurance	63
Schedule D – Part 6 – Section 1	E16	Schedule P – Part 3O – Reinsurance	63
Schedule D – Part 6 – Section 2	E16	Schedule P – Part 3P – Reinsurance	63
Schedule D – Summary By Country	SI04	Schedule P – Part 3R – Section 1 – Products Liability – Occurrence	64
Schedule D – Verification Between Years	SI03	Schedule P – Part 3R – Section 2 – Products Liability – Claims-Made	64
Schedule DA – Part 1	E17	Schedule P – Part 3S – Financial Guaranty/Mortgage Guaranty	64
Schedule DA – Verification Between Years	SI11	Schedule P – Part 3T – Warranty	64
Schedule DB – Part A – Section 1	E18	Schedule P – Part 4A – Homeowners/Farmowners	65
Schedule DB – Part A – Section 2	E18	Schedule P – Part 4B – Private Passenger Auto Liability/Medical	65
Schedule DB – Part A – Section 3	E19	Schedule P – Part 4C – Commercial Auto/Truck Liability/Medical	65
Schedule DB – Part A – Verification Between Years	SI12	Schedule P – Part 4D – Workers' Compensation	65
Schedule DB – Part B – Section 1	E19	Schedule P – Part 4E – Commercial Multiple Peril	65
Schedule DB – Part B – Section 2	E20	Schedule P – Part 4F – Section 1 – Medical Malpractice – Occurrence	66
Schedule DB – Part B – Section 3	E20	Schedule P – Part 4F – Section 2 – Medical Malpractice – Claims-Made	66
Schedule DB – Part B – Verification Between Years	SI12	Schedule P – Part 4G – Special Liability (Ocean Marine, Aircraft (All Perils), Boiler and Machinery)	66
Schedule DB – Part C – Section 1	E21	Schedule P – Part 4H – Section 1 – Other Liability – Occurrence	66
Schedule DB – Part C – Section 2	E21	Schedule P – Part 4H – Section 2 – Other Liability – Claims-Made	66
Schedule DB – Part C – Section 3	E22		
Schedule DB – Part C – Verification Between Years	SI13		
Schedule DB – Part D – Section 1	E22		
Schedule DB – Part D – Section 2	E23		
Schedule DB – Part D – Section 3	E23		

ALPHABETICAL INDEX TO PROPERTY ANNUAL STATEMENT

Schedule DB – Part D – Verification Between Years	SI13	Schedule P – Part 4I – Special Property (Fire, Allied Lines, Inland Marine, Earthquake, Burglary and Theft)	67
Schedule DB – Part E – Section 1	E24	Schedule P – Part 4J – Auto Physical Damage	67
Schedule DB – Part E – Verification	SI13	Schedule P – Part 4K – Fidelity/Surety	67
Schedule DB – Part F – Section 1	SI14	Schedule P – Part 4L – Other (Including Credit, Accident and Health)	67
Schedule DB – Part F – Section 2	SI15	Schedule P – Part 4M – International	67
Schedule E – Part 1 – Cash	E25	Schedule P – Part 4N – Reinsurance	68
Schedule E – Part 2 – Cash Equivalents	E26	Schedule P – Part 4O – Reinsurance	68
Schedule E – Part 3 – Special Deposits	E27	Schedule P – Part 4P – Reinsurance	68
Schedule E – Verification Between Years	SI16	Schedule P – Part 4R – Section 1 – Products Liability – Occurrence	69
Schedule F – Part 1	20	Schedule P – Part 4R – Section 2 – Products Liability – Claims-Made	69
Schedule F – Part 2	21	Schedule P – Part 4S – Financial Guaranty/Mortgage Guaranty	69
Schedule F – Part 3	22	Schedule P – Part 4T – Warranty	69
Schedule F – Part 4	23	Schedule P – Part 5A – Homeowners/Farmowners	70
Schedule F – Part 5	24	Schedule P – Part 5B – Private Passenger Auto Liability/Medical	71
Schedule F – Part 6	25	Schedule P – Part 5C – Commercial Auto/Truck Liability/Medical	72
Schedule F – Part 7	26	Schedule P – Part 5D – Workers' Compensation	73
Schedule F – Part 8	27	Schedule P – Part 5E – Commercial Multiple Peril	74
Schedule H – Accident and Health Exhibit – Part 1	28	Schedule P – Part 5F – Medical Malpractice – Claims-Made	76
Schedule H – Part 2, Part 3 and Part 4	29	Schedule P – Part 5F – Medical Malpractice – Occurrence	75
Schedule H – Part 5 – Health Claims	30	Schedule P – Part 5H – Other Liability – Claims-Made	78
Schedule P – Part 1 – Analysis of Losses and Loss Expenses	31	Schedule P – Part 5H – Other Liability – Occurrence	77
Schedule P – Part 1A – Homeowners/Farmowners	33	Schedule P – Part 5R – Products Liability – Claims-Made	80
Schedule P – Part 1B – Private Passenger Auto Liability/Medical	34	Schedule P – Part 5R – Products Liability – Occurrence	79
Schedule P – Part 1C – Commercial Auto/Truck Liability/Medical	35	Schedule P – Part 5T – Warranty	81
Schedule P – Part 1D – Workers' Compensation	36	Schedule P – Part 6C – Commercial Auto/Truck Liability/Medical	82
Schedule P – Part 1E – Commercial Multiple Peril	37	Schedule P – Part 6D – Workers' Compensation	82
Schedule P – Part 1F – Section 1 – Medical Malpractice – Occurrence	38	Schedule P – Part 6E – Commercial Multiple Peril	83
Schedule P – Part 1F – Section 2 – Medical Malpractice – Claims-Made	39	Schedule P – Part 6H – Other Liability – Claims-Made	84
Schedule P – Part 1G - Special Liability (Ocean, Marine, Aircraft (All Perils), Boiler and Machinery)	40	Schedule P – Part 6H – Other Liability – Occurrence	83
Schedule P – Part 1H – Section 1 – Other Liability – Occurrence	41	Schedule P – Part 6M – International	84
Schedule P – Part 1H – Section 2 – Other Liability – Claims-Made	42	Schedule P – Part 6N – Reinsurance	85
Schedule P – Part 1I – Special Property (Fire, Allied Lines, Inland Marine, Earthquake, Burglary & Theft)	43	Schedule P – Part 6O – Reinsurance	85
Schedule P – Part 1J – Auto Physical Damage	44	Schedule P – Part 6R – Products Liability – Claims-Made	86
Schedule P – Part 1K – Fidelity/Surety	45	Schedule P – Part 6R – Products Liability – Occurrence	86
Schedule P – Part 1L – Other (Including Credit, Accident and Health)	46	Schedule P – Part 7A – Primary Loss Sensitive Contracts	87
Schedule P – Part 1M – International	47	Schedule P – Part 7B – Reinsurance Loss Sensitive Contracts	89
Schedule P – Part 1N – Reinsurance	48	Schedule P Interrogatories	91
Schedule P – Part 1O – Reinsurance	49	Schedule T – Exhibit of Premiums Written	92
Schedule P – Part 1P – Reinsurance	50	Schedule T – Part 2 – Interstate Compact	93
Schedule P – Part 1R – Section 1 – Products Liability – Occurrence	51	Schedule Y – Information Concerning Activities of Insurer Members of a Holding Company Group	94
Schedule P – Part 1R – Section 2 – Products Liability – Claims – Made	52	Schedule Y – Part 2 – Summary of Insurer's Transactions With Any Affiliates	95
Schedule P – Part 1S – Financial Guaranty/Mortgage Guaranty	53	Statement of Income	4
Schedule P – Part 1T – Warranty	54	Summary Investment Schedule	SI01
Schedule P – Part 2, Part 3 and Part 4 - Summary	32	Supplemental Exhibits and Schedules Interrogatories	96
Schedule P – Part 2A – Homeowners/Farmowners	55	Underwriting and Investment Exhibit Part 1	6
Schedule P – Part 2B – Private Passenger Auto Liability/Medical	55	Underwriting and Investment Exhibit Part 1A	7
Schedule P – Part 2C – Commercial Auto/Truck Liability/Medical	55	Underwriting and Investment Exhibit Part 1B	8
Schedule P – Part 2D – Workers' Compensation	55	Underwriting and Investment Exhibit Part 2	9
Schedule P – Part 2E – Commercial Multiple Peril	55	Underwriting and Investment Exhibit Part 2A	10
Schedule P – Part 2F – Section 1 – Medical Malpractice – Occurrence	56	Underwriting and Investment Exhibit Part 3	11