

ANNUAL STATEMENT

OF THE

AMERICAN STATES LLOYDS INSURANCE COMPANY

of _____ **PLANO**

STATE OF _____ **TEXAS**

TO THE

Insurance Department

OF THE

FOR THE YEAR ENDED

December 31, 2021

PROPERTY AND CASUALTY

2021



ANNUAL STATEMENT

For the Year Ended December 31, 2021
OF THE CONDITION AND AFFAIRS OF THE

American States Lloyds Insurance Company

NAIC Group Code 0111 0111 **NAIC Company Code** 31933 **Employer's ID Number** 75-6220479
(Current Period) (Prior Period)

Organized under the Laws of Texas, **State of Domicile or Port of Entry** TX
Country of Domicile United States of America

Incorporated/Organized September 5, 1974 **Commenced Business** September 5, 1974

Statutory Home Office 7900 Windrose Avenue, Plano, TX, US 75024
(Street and Number) (City or Town, State, Country and Zip Code)

Main Administrative Office 175 Berkeley Street
(Street and Number)
Boston, MA, US 02116 617-357-9500
(City or Town, State, Country and Zip Code) (Area Code) (Telephone Number)

Mail Address 175 Berkeley Street, Boston, MA, US 02116
(Street and Number or P.O. Box) (City or Town, State, Country and Zip Code)

Primary Location of Books and Records 175 Berkeley Street Boston, MA, US 02116 617-357-9500
(Street and Number) (City or Town, State, Country and Zip Code) (Area Code) (Telephone Number)

Internet Web Site Address www.safeco.com

Statutory Statement Contact Matthew Sterling 617-357-9500
(Name) (Area Code) (Telephone Number) (Extension)
Statutory.Compliance@LibertyMutual.com 603-430-1653
(E-Mail Address) (Fax Number)

OFFICERS

Chairman of the Board
Mark Charles Touhey

	Name	Title
1.	Hamid Talal Mirza #	President and Chief Executive Officer
2.	Mark Charles Touhey	Executive Vice President and Secretary
3.	Edward Jose Pena	Executive Vice President and Treasurer

VICE-PRESIDENTS

Name	Title	Name	Title
Paul Sanghera #	Executive Vice President and Comptroller	Vlad Yakov Barbalat #	EVP and Chief Investment Officer
Damon Paul Hart #	EVP and Chief Legal Officer	Christopher Locke Peirce	EVP and Chief Financial Officer

DIRECTORS OR TRUSTEES

James Matthew Czapla #	Matthew Paul Dolan	Alison Brooke Erbig	Michael Joseph Fallon
Hamid Talal Mirza #	Elizabeth Julia Morahan	Paul Sanghera #	Catherine Elizabeth Stevenson #
Mark Charles Touhey			

State of Massachusetts
County of Suffolk ss

The officers of this reporting entity being duly sworn, each depose and say that they are the described officers of said reporting entity, and that on the reporting period stated above, all of the herein described assets were the absolute property of the said reporting entity, free and clear from any liens or claims thereon, except as herein stated, and that this statement, together with related exhibits, schedules and explanations therein contained, annexed or referred to, is a full and true statement of all the assets and liabilities and of the condition and affairs of the said reporting entity as of the reporting period stated above, and of its income and deductions therefrom for the period ended, and have been completed in accordance with the NAIC Annual Statement Instructions and Accounting Practices and Procedures manual except to the extent that: (1) state law may differ; or, (2) that state rules or regulations require differences in reporting not related to accounting practices and procedures, according to the best of their information, knowledge and belief, respectively. Furthermore, the scope of this attestation by the described officers also includes the related corresponding electronic filing with the NAIC, when required, that is an exact copy (except for formatting differences due to electronic filing) of the enclosed statement. The electronic filing may be requested by various regulators in lieu of or in addition to the enclosed statement.

_____ (Signature) Hamid Talal Mirza # _____ (Printed Name) 1. _____ President and Chief Executive Officer _____ (Title)	_____ (Signature) Mark Charles Touhey _____ (Printed Name) 2. _____ Executive Vice President and Secretary _____ (Title)	_____ (Signature) Edward Jose Pena _____ (Printed Name) 3. _____ Executive Vice President and Treasurer _____ (Title)
--	---	--

Subscribed and sworn to (or affirmed) before me this on this
20th day of January, 2022, by

a. Is this an original filing? Yes No
 b. If no: 1. State the amendment number _____
 2. Date filed _____
 3. Number of pages attached _____

ASSETS

	Current Year			Prior Year
	1	2	3	4
	Assets	Nonadmitted Assets	Net Admitted Assets (Cols. 1 - 2)	Net Admitted Assets
1. Bonds (Schedule D)	3,900,688		3,900,688	3,833,208
2. Stocks (Schedule D):				
2.1 Preferred stocks				
2.2 Common stocks				
3. Mortgage loans on real estate (Schedule B):				
3.1 First liens				
3.2 Other than first liens				
4. Real estate (Schedule A):				
4.1 Properties occupied by the company (less \$ 0 encumbrances)				
4.2 Properties held for the production of income (less \$ 0 encumbrances)				
4.3 Properties held for sale (less \$ 0 encumbrances)				
5. Cash (\$ 0, Schedule E - Part 1), cash equivalents (\$ 26,116, Schedule E - Part 2), and short-term investments (\$ 0, Schedule DA)	26,116		26,116	27,033
6. Contract loans (including \$ 0 premium notes)				
7. Derivatives (Schedule DB)				
8. Other invested assets (Schedule BA)				
9. Receivables for securities				
10. Securities lending reinvested collateral assets (Schedule DL)				
11. Aggregate write-ins for invested assets				
12. Subtotals, cash and invested assets (Lines 1 to 11)	3,926,804		3,926,804	3,860,241
13. Title plants less \$ 0 charged off (for Title insurers only)				
14. Investment income due and accrued	15,680		15,680	18,026
15. Premiums and considerations:				
15.1 Uncollected premiums and agents' balances in the course of collection				
15.2 Deferred premiums, agents' balances and installments booked but deferred and not yet due (including \$ 0 earned but unbilled premiums)				
15.3 Accrued retrospective premiums (\$ 0) and contracts subject to redetermination (\$ 0)				
16. Reinsurance:				
16.1 Amounts recoverable from reinsurers				
16.2 Funds held by or deposited with reinsured companies				
16.3 Other amounts receivable under reinsurance contracts				
17. Amounts receivable relating to uninsured plans				
18.1 Current federal and foreign income tax recoverable and interest thereon				
18.2 Net deferred tax asset				
19. Guaranty funds receivable or on deposit	95		95	95
20. Electronic data processing equipment and software				
21. Furniture and equipment, including health care delivery assets (\$ 0)				
22. Net adjustment in assets and liabilities due to foreign exchange rates				
23. Receivables from parent, subsidiaries and affiliates				
24. Health care (\$ 0) and other amounts receivable				
25. Aggregate write-ins for other-than-invested assets				
26. Total assets excluding Separate Accounts, Segregated Accounts and Protected Cell Accounts (Lines 12 to 25)	3,942,579		3,942,579	3,878,362
27. From Separate Accounts, Segregated Accounts and Protected Cell Accounts				
28. Total (Lines 26 and 27)	3,942,579		3,942,579	3,878,362

DETAILS OF WRITE-IN LINES				
1101.				
1102.				
1103.				
1198. Summary of remaining write-ins for Line 11 from overflow page				
1199. Totals (Lines 1101 through 1103 plus 1198) (Line 11 above)				
2501.				
2502.				
2503.				
2598. Summary of remaining write-ins for Line 25 from overflow page				
2599. Totals (Lines 2501 through 2503 plus 2598) (Line 25 above)				

LIABILITIES, SURPLUS AND OTHER FUNDS

	1	2
	Current Year	Prior Year
1. Losses (Part 2A, Line 35, Column 8)		
2. Reinsurance payable on paid losses and loss adjustment expenses (Schedule F, Part 1, Column 6)		
3. Loss adjustment expenses (Part 2A, Line 35, Column 9)		
4. Commissions payable, contingent commissions and other similar charges		
5. Other expenses (excluding taxes, licenses and fees)		
6. Taxes, licenses and fees (excluding federal and foreign income taxes)	(5,058)	(829)
7.1 Current federal and foreign income taxes (including \$ 0 on realized capital gains (losses))	2,788	1,265
7.2 Net deferred tax liability	3,000	1,000
8. Borrowed money \$ 0 and interest thereon \$ 0		
9. Unearned premiums (Part 1A, Line 38, Column 5) (after deducting unearned premiums for ceded reinsurance of \$ 0 and including warranty reserves of \$ 0 and accrued accident and health experience rating refunds including \$ 0 for medical loss ratio rebate per the Public Health Service Act)		
10. Advance premium		
11. Dividends declared and unpaid:		
11.1 Stockholders		
11.2 Policyholders		
12. Ceded reinsurance premiums payable (net of ceding commissions)	5,153	924
13. Funds held by company under reinsurance treaties (Schedule F, Part 3, Column 20)		
14. Amounts withheld or retained by company for account of others		
15. Remittances and items not allocated		
16. Provision for reinsurance (including \$ 0 certified) (Schedule F, Part 3 Column 78)		
17. Net adjustments in assets and liabilities due to foreign exchange rates		
18. Drafts outstanding		
19. Payable to parent, subsidiaries and affiliates	5,952	4,304
20. Derivatives		
21. Payable for securities		
22. Payable for securities lending		
23. Liability for amounts held under uninsured plans		
24. Capital notes \$ 0 and interest thereon \$ 0		
25. Aggregate write-ins for liabilities	2	2
26. Total liabilities excluding protected cell liabilities (Lines 1 through 25)	11,837	6,666
27. Protected cell liabilities		
28. Total liabilities (Lines 26 and 27)	11,837	6,666
29. Aggregate write-ins for special surplus funds		
30. Common capital stock		
31. Preferred capital stock		
32. Aggregate write-ins for other-than-special surplus funds	2,000,000	2,000,000
33. Surplus notes		
34. Gross paid in and contributed surplus	792,000	792,000
35. Unassigned funds (surplus)	1,138,742	1,079,696
36. Less treasury stock, at cost:		
36.1 0 shares common (value included in Line 30 \$ 0)		
36.2 0 shares preferred (value included in Line 31 \$ 0)		
37. Surplus as regards policyholders (Lines 29 to 35, less 36) (Page 4, Line 39)	3,930,742	3,871,696
38. Totals (Page 2, Line 28, Col. 3)	3,942,579	3,878,362

DETAILS OF WRITE-IN LINES		
2501. Other Liabilities	2	2
2502.		
2503.		
2598. Summary of remaining write-ins for Line 25 from overflow page		
2599. Totals (Lines 2501 through 2503 plus 2598) (Line 25 above)	2	2
2901.		
2902.		
2903.		
2998. Summary of remaining write-ins for Line 29 from overflow page		
2999. Totals (Lines 2901 through 2903 plus 2998) (Line 29 above)		
3201. Guaranty funds	2,000,000	2,000,000
3202.		
3203.		
3298. Summary of remaining write-ins for Line 32 from overflow page		
3299. Totals (Lines 3201 through 3203 plus 3298) (Line 32 above)	2,000,000	2,000,000

STATEMENT OF INCOME

	1	2
	Current Year	Prior Year
UNDERWRITING INCOME		
1. Premiums earned (Part 1, Line 35, Column 4)		
DEDUCTIONS:		
2. Losses incurred (Part 2, Line 35, Column 7)		
3. Loss adjustment expenses incurred (Part 3, Line 25, Column 1)		
4. Other underwriting expenses incurred (Part 3, Line 25, Column 2)		
5. Aggregate write-ins for underwriting deductions		
6. Total underwriting deductions (Lines 2 through 5)		
7. Net income of protected cells		
8. Net underwriting gain (loss) (Line 1 minus Line 6 plus Line 7)		
INVESTMENT INCOME		
9. Net investment income earned (Exhibit of Net Investment Income, Line 17)	66,809	69,733
10. Net realized capital gains (losses) less capital gains tax of \$ 1,730 (Exhibit of Capital Gains (Losses))	6,507	
11. Net investment gain (loss) (Lines 9 + 10)	73,316	69,733
OTHER INCOME		
12. Net gain or (loss) from agents' or premium balances charged off (amount recovered \$ 0 amount charged off \$ 0)		
13. Finance and service charges not included in premiums		
14. Aggregate write-ins for miscellaneous income		
15. Total other income (Lines 12 through 14)		
16. Net income before dividends to policyholders, after capital gains tax and before all other federal and foreign income taxes (Lines 8 + 11 + 15)	73,316	69,733
17. Dividends to policyholders		
18. Net income, after dividends to policyholders, after capital gains tax and before all other federal and foreign income taxes (Line 16 minus Line 17)	73,316	69,733
19. Federal and foreign income taxes incurred	12,270	13,000
20. Net income (Line 18 minus Line 19) (to Line 22)	61,046	56,733
CAPITAL AND SURPLUS ACCOUNT		
21. Surplus as regards policyholders, December 31 prior year (Page 4, Line 39, Column 2)	3,871,696	3,815,963
22. Net income (from Line 20)	61,046	56,733
23. Net transfers (to) from Protected Cell accounts		
24. Change in net unrealized capital gains or (losses) less capital gains tax of \$ 0		
25. Change in net unrealized foreign exchange capital gain (loss)		
26. Change in net deferred income tax	(2,000)	(1,000)
27. Change in nonadmitted assets (Exhibit of Nonadmitted Assets, Line 28, Col. 3)		
28. Change in provision for reinsurance (Page 3, Line 16, Column 2 minus Column 1)		
29. Change in surplus notes		
30. Surplus (contributed to) withdrawn from protected cells		
31. Cumulative effect of changes in accounting principles		
32. Capital changes:		
32.1 Paid in		
32.2 Transferred from surplus (Stock Dividend)		
32.3 Transferred to surplus		
33. Surplus adjustments:		
33.1 Paid in		
33.2 Transferred to capital (Stock Dividend)		
33.3 Transferred from capital		
34. Net remittances from or (to) Home Office		
35. Dividends to stockholders		
36. Change in treasury stock (Page 3, Lines 36.1 and 36.2, Column 2 minus Column 1)		
37. Aggregate write-ins for gains and losses in surplus		
38. Change in surplus as regards policyholders for the year (Lines 22 through 37)	59,046	55,733
39. Surplus as regards policyholders, December 31 current year (Lines 21 plus Line 38) (Page 3, Line 37)	3,930,742	3,871,696

DETAILS OF WRITE-IN LINES		
0501.		
0502.		
0503.		
0598. Summary of remaining write-ins for Line 05 from overflow page		
0599. Totals (Lines 0501 through 0503 plus 0598) (Line 05 above)		
1401.		
1402.		
1403.		
1498. Summary of remaining write-ins for Line 14 from overflow page		
1499. Totals (Lines 1401 through 1403 plus 1498) (Line 14 above)		
3701.		
3702.		
3703.		
3798. Summary of remaining write-ins for Line 37 from overflow page		
3799. Totals (Lines 3701 through 3703 plus 3798) (Line 37 above)		

CASH FLOW

	1	2
Cash from Operations	Current Year	Prior Year
1. Premiums collected net of reinsurance		
2. Net investment income	64,833	66,844
3. Miscellaneous income		
4. Total (Lines 1 through 3)	64,833	66,844
5. Benefit and loss related payments		
6. Net transfers to Separate Accounts, Segregated Accounts and Protected Cell Accounts		
7. Commissions, expenses paid and aggregate write-ins for deductions		
8. Dividends paid to policyholders		
9. Federal and foreign income taxes paid (recovered) net of \$ 0 tax on capital gains (losses)	12,477	17,169
10. Total (Lines 5 through 9)	12,477	17,169
11. Net cash from operations (Line 4 minus Line 10)	52,356	49,675
Cash from Investments		
12. Proceeds from investments sold, matured or repaid:		
12.1 Bonds	902,520	447,099
12.2 Stocks		
12.3 Mortgage loans		
12.4 Real estate		
12.5 Other invested assets		
12.6 Net gains or (losses) on cash, cash equivalents and short-term investments		
12.7 Miscellaneous proceeds		
12.8 Total investment proceeds (Lines 12.1 to 12.7)	902,520	447,099
13. Cost of investments acquired (long-term only):		
13.1 Bonds	957,440	616,928
13.2 Stocks		
13.3 Mortgage loans		
13.4 Real estate		
13.5 Other invested assets		
13.6 Miscellaneous applications		
13.7 Total investments acquired (Lines 13.1 to 13.6)	957,440	616,928
14. Net increase (decrease) in contract loans and premium notes		
15. Net cash from investments (Line 12.8 minus Line 13.7 minus Line 14)	(54,920)	(169,829)
Cash from Financing and Miscellaneous Sources		
16. Cash provided (applied):		
16.1 Surplus notes, capital notes		
16.2 Capital and paid in surplus, less treasury stock		
16.3 Borrowed funds		
16.4 Net deposits on deposit-type contracts and other insurance liabilities		
16.5 Dividends to stockholders		
16.6 Other cash provided (applied)	1,647	(295)
17. Net cash from financing and miscellaneous sources (Lines 16.1 to 16.4 minus Line 16.5 plus Line 16.6)	1,647	(295)
RECONCILIATION OF CASH, CASH EQUIVALENTS AND SHORT-TERM INVESTMENTS		
18. Net change in cash, cash equivalents and short-term investments (Line 11, plus Lines 15 and 17)	(917)	(120,449)
19. Cash, cash equivalents and short-term investments:		
19.1 Beginning of year	27,033	147,482
19.2 End of year (Line 18 plus Line 19.1)	26,116	27,033

Note: Supplemental disclosures of cash flow information for non-cash transactions:

20.0001		
20.0002		
20.0003		

NONE Underwriting and Investment Exhibit - Part 1

NONE Underwriting and Investment Exhibit - Part 1A

UNDERWRITING AND INVESTMENT EXHIBIT

PART 1B – PREMIUMS WRITTEN

Line of Business	1	Reinsurance Assumed		Reinsurance Ceded		6
	Direct Business (a)	2 From Affiliates	3 From Non- Affiliates	4 To Affiliates	5 To Non- Affiliates	Net Premiums Written Cols. 1 + 2 + 3 - 4 - 5
1. Fire	(2,749)			(2,749)		
2. Allied lines	(5,909)			(5,909)		
3. Farmowners multiple peril	333			333		
4. Homeowners multiple peril						
5. Commercial multiple peril						
6. Mortgage guaranty						
8. Ocean marine						
9. Inland marine	(107)			(107)		
10. Financial guaranty						
11.1 Medical professional liability--occurrence						
11.2 Medical professional liability--claims-made						
12. Earthquake						
13. Group accident and health						
14. Credit accident and health (group and individual)						
15. Other accident and health						
16. Workers' compensation						
17.1 Other liability—occurrence						
17.2 Other liability—claims-made						
17.3 Excess workers' compensation						
18.1 Products liability—occurrence						
18.2 Products liability—claims-made						
19.1,19.2 Private passenger auto liability						
19.3,19.4 Commercial auto liability						
21. Auto physical damage						
22. Aircraft (all perils)						
23. Fidelity						
24. Surety						
26. Burglary and theft						
27. Boiler and machinery						
28. Credit						
29. International						
30. Warranty						
31. Reinsurance-nonproportional assumed property	X X X					
32. Reinsurance-nonproportional assumed liability	X X X					
33. Reinsurance-nonproportional assumed financial lines	X X X					
34. Aggregate write-ins for other lines of business						
35. TOTALS	(8,432)			(8,432)		

DETAILS OF WRITE-IN LINES						
3401.						
3402.						
3403.						
3498. Sum of remaining write-ins for Line 34 from overflow page						
3499. Totals (Lines 3401 through 3403 plus 3498) (Line 34 above)						

(a) Does the company's direct premiums written include premiums recorded on an installment basis? Yes [] No [X]

If yes: 1. The amount of such installment premiums \$

2. Amount at which such installment premiums would have been reported had they been recorded on an annualized basis \$

UNDERWRITING AND INVESTMENT EXHIBIT PART 2 – LOSSES PAID AND INCURRED

Line of Business	Losses Paid Less Salvage				5 Net Losses Unpaid Current Year (Part 2A, Col. 8)	6 Net Losses Unpaid Prior Year	7 Losses Incurred Current Year (Cols. 4 + 5 - 6)	8 Percentage of Losses Incurred (Col. 7, Part 2) to Premiums Earned (Col. 4, Part 1)
	1 Direct Business	2 Reinsurance Assumed	3 Reinsurance Recovered	4 Net Payments (Cols. 1 + 2 - 3)				
1. Fire	22,949		22,949					
2. Allied lines	121,608		121,608					
3. Farmowners multiple peril	1,070,835		1,070,835					
4. Homeowners multiple peril								
5. Commercial multiple peril								
6. Mortgage guaranty								
8. Ocean marine								
9. Inland marine								
10. Financial guaranty								
11.1 Medical professional liability—occurrence								
11.2 Medical professional liability—claims-made								
12. Earthquake								
13. Group accident and health								
14. Credit accident and health (group and individual)								
15. Other accident and health								
16. Workers' compensation								
17.1 Other liability—occurrence								
17.2 Other liability—claims-made								
17.3 Excess workers' compensation								
18.1 Products liability—occurrence								
18.2 Products liability—claims-made								
19.1,19.2 Private passenger auto liability								
19.3,19.4 Commercial auto liability								
21. Auto physical damage								
22. Aircraft (all perils)								
23. Fidelity								
24. Surety								
26. Burglary and theft								
27. Boiler and machinery								
28. Credit								
29. International								
30. Warranty								
31. Reinsurance-nonproportional assumed property	X X X							
32. Reinsurance-nonproportional assumed liability	X X X							
33. Reinsurance-nonproportional assumed financial lines	X X X							
34. Aggregate write-ins for other lines of business								
35. TOTALS	1,215,392		1,215,392					

DETAILS OF WRITE-IN LINES							
3401.							
3402.							
3403.							
3498. Sum of remaining write-ins for Line 34 from overflow page							
3499. Totals (Lines 3401 through 3403 plus 3498) (Line 34 above)							

UNDERWRITING AND INVESTMENT EXHIBIT

PART 2A – UNPAID LOSSES AND LOSS ADJUSTMENT EXPENSES

Line of Business	Reported Losses				Incurred But Not Reported			8 Net Losses Unpaid (Cols. 4 + 5 + 6 - 7)	9 Net Unpaid Loss Adjustment Expenses
	1 Direct	2 Reinsurance Assumed	3 Deduct Reinsurance Recoverable	4 Net Losses Excl. Incurred But Not Reported (Cols. 1 + 2 - 3)	5 Direct	6 Reinsurance Assumed	7 Reinsurance Ceded		
1. Fire					(30,096)		(30,096)		
2. Allied lines					(28,490)		(28,490)		
3. Farmowners multiple peril	50,360		50,360		(54,586)		(54,586)		
4. Homeowners multiple peril									
5. Commercial multiple peril									
6. Mortgage guaranty									
8. Ocean marine									
9. Inland marine									
10. Financial guaranty									
11.1 Medical professional liability—occurrence									
11.2 Medical professional liability—claims-made									
12. Earthquake									
13. Group accident and health								(a)	
14. Credit accident and health (group and individual)								(a)	
15. Other accident and health									
16. Workers' compensation									
17.1 Other liability—occurrence									
17.2 Other liability—claims-made									
17.3 Excess workers' compensation									
18.1 Products liability—occurrence									
18.2 Products liability—claims-made									
19.1,19.2 Private passenger auto liability									
19.3,19.4 Commercial auto liability									
21. Auto physical damage									
22. Aircraft (all perils)									
23. Fidelity									
24. Surety									
26. Burglary and theft									
27. Boiler and machinery									
28. Credit									
29. International									
30. Warranty									
31. Reinsurance-nonproportional assumed property	X X X				X X X				
32. Reinsurance-nonproportional assumed liability	X X X				X X X				
33. Reinsurance-nonproportional assumed financial lines	X X X				X X X				
34. Aggregate write-ins for other lines of business									
35. TOTALS	50,360		50,360		(113,172)		(113,172)		
DETAILS OF WRITE-IN LINES									
3401.									
3402.									
3403.									
3498. Sum of remaining write-ins for Line 34 from overflow page									
3499. Totals (Lines 3401 through 3403 plus 3498) (Line 34 above)									

(a) Including \$ 0 for present value of life indemnity claims.

UNDERWRITING AND INVESTMENT EXHIBIT

PART 3 - EXPENSES

	1 Loss Adjustment Expenses	2 Other Underwriting Expenses	3 Investment Expenses	4 Total
1. Claim adjustment services:				
1.1 Direct	7,344			7,344
1.2 Reinsurance assumed				
1.3 Reinsurance ceded	7,344			7,344
1.4 Net claim adjustment services (1.1 + 1.2 - 1.3)				
2. Commission and brokerage:				
2.1 Direct, excluding contingent		(1,265)		(1,265)
2.2 Reinsurance assumed, excluding contingent				
2.3 Reinsurance ceded, excluding contingent		(1,265)		(1,265)
2.4 Contingent—direct				
2.5 Contingent—reinsurance assumed				
2.6 Contingent—reinsurance ceded				
2.7 Policy and membership fees				
2.8 Net commission and brokerage (2.1 + 2.2 - 2.3 + 2.4 + 2.5 - 2.6 + 2.7)				
3. Allowances to manager and agents				
4. Advertising			9	9
5. Boards, bureaus and associations			7	7
6. Surveys and underwriting reports			4	4
7. Audit of assureds' records				
8. Salary and related items:				
8.1 Salaries			2,738	2,738
8.2 Payroll taxes			525	525
9. Employee relations and welfare			1,091	1,091
10. Insurance			38	38
11. Directors' fees			1	1
12. Travel and travel items			27	27
13. Rent and rent items			711	711
14. Equipment			529	529
15. Cost or depreciation of EDP equipment and software			339	339
16. Printing and stationery			11	11
17. Postage, telephone and telegraph, exchange and express			58	58
18. Legal and auditing			47	47
19. Totals (Lines 3 to 18)			6,135	6,135
20. Taxes, licenses and fees:				
20.1 State and local insurance taxes deducting guaranty association credits of \$ 0				
20.2 Insurance department licenses and fees				
20.3 Gross guaranty association assessments				
20.4 All other (excluding federal and foreign income and real estate)				
20.5 Total taxes, licenses and fees (20.1 + 20.2 + 20.3 + 20.4)				
21. Real estate expenses				
22. Real estate taxes				
23. Reimbursements by uninsured plans				
24. Aggregate write-ins for miscellaneous expenses			1,022	1,022
25. Total expenses incurred			7,157	7,157 (a)
26. Less unpaid expenses—current year		(5,058)		(5,058)
27. Add unpaid expenses—prior year		(829)		(829)
28. Amounts receivable relating to uninsured plans, prior year				
29. Amounts receivable relating to uninsured plans, current year				
30. TOTAL EXPENSES PAID (Lines 25 - 26 + 27 - 28 + 29)		4,229	7,157	11,386

DETAILS OF WRITE-IN LINES				
2401. Other expenses			1,022	1,022
2402.				
2403.				
2498. Sum of remaining write-ins for Line 24 from overflow page				
2499. Totals (Lines 2401 through 2403 plus 2498) (Line 24 above)			1,022	1,022

(a) Includes management fees of \$ 7,157 to affiliates and \$ 0 to non-affiliates.

EXHIBIT OF NET INVESTMENT INCOME

	1 Collected During Year	2 Earned During Year
1. U.S. Government bonds	(a) 76,302	73,956
1.1 Bonds exempt from U.S. tax	(a)	
1.2 Other bonds (unaffiliated)	(a)	
1.3 Bonds of affiliates	(a)	
2.1 Preferred stocks (unaffiliated)	(b)	
2.11 Preferred stocks of affiliates	(b)	
2.2 Common stocks (unaffiliated)		
2.21 Common stocks of affiliates		
3. Mortgage loans	(c)	
4. Real estate	(d)	
5. Contract loans		
6. Cash, cash equivalents and short-term investments	(e) 10	10
7. Derivative instruments	(f)	
8. Other invested assets		
9. Aggregate write-ins for investment income		
10. Total gross investment income	76,312	73,966
11. Investment expenses		(g) 7,157
12. Investment taxes, licenses and fees, excluding federal income taxes		(g)
13. Interest expense		(h)
14. Depreciation on real estate and other invested assets		(i)
15. Aggregate write-ins for deductions from investment income		
16. Total deductions (Lines 11 through 15)		7,157
17. Net investment income (Line 10 minus Line 16)		66,809

DETAILS OF WRITE-IN LINES		
0901.		
0902.		
0903.		
0998.	Summary of remaining write-ins for Line 09 from overflow page	
0999.	Totals (Lines 0901 through 0903 plus 0998) (Line 09 above)	
1501.		
1502.		
1503.		
1598.	Summary of remaining write-ins for Line 15 from overflow page	
1599.	Totals (Lines 1501 through 1503 plus 1598) (Line 15 above)	

- (a) Includes \$ 8,016 accrual of discount less \$ 3,694 amortization of premium and less \$ 390 paid for accrued interest on purchases.
- (b) Includes \$ 0 accrual of discount less \$ 0 amortization of premium and less \$ 0 paid for accrued dividends on purchases.
- (c) Includes \$ 0 accrual of discount less \$ 0 amortization of premium and less \$ 0 paid for accrued interest on purchases.
- (d) Includes \$ 0 for company's occupancy of its own buildings; and excludes \$ 0 interest on encumbrances.
- (e) Includes \$ 0 accrual of discount less \$ 0 amortization of premium and less \$ 0 paid for accrued interest on purchases.
- (f) Includes \$ 0 accrual of discount less \$ 0 amortization of premium.
- (g) Includes \$ 7,157 investment expenses and \$ 0 investment taxes, licenses and fees, excluding federal income taxes, attributable to segregated and Separate Accounts.
- (h) Includes \$ 0 interest on surplus notes and \$ 0 interest on capital notes.
- (i) Includes \$ 0 depreciation on real estate and \$ 0 depreciation on other invested assets.

EXHIBIT OF CAPITAL GAINS (LOSSES)

	1 Realized Gain (Loss) on Sales or Maturity	2 Other Realized Adjustments	3 Total Realized Capital Gain (Loss) (Columns 1 + 2)	4 Change in Unrealized Capital Gain (Loss)	5 Change in Unrealized Foreign Exchange Capital Gain (Loss)
1. U.S. Government bonds	8,237		8,237		
1.1 Bonds exempt from U.S. tax					
1.2 Other bonds (unaffiliated)					
1.3 Bonds of affiliates					
2.1 Preferred stocks (unaffiliated)					
2.11 Preferred stocks of affiliates					
2.2 Common stocks (unaffiliated)					
2.21 Common stocks of affiliates					
3. Mortgage loans					
4. Real estate					
5. Contract loans					
6. Cash, cash equivalents and short-term investments					
7. Derivative instruments					
8. Other invested assets					
9. Aggregate write-ins for capital gains (losses)					
10. Total capital gains (losses)	8,237		8,237		

DETAILS OF WRITE-IN LINES					
0901.					
0902.					
0903.					
0998.	Summary of remaining write-ins for Line 09 from overflow page				
0999.	Totals (Lines 0901 through 0903 plus 0998) (Line 09 above)				

EXHIBIT OF NONADMITTED ASSETS

	1 Current Year Total Nonadmitted Assets	2 Prior Year Total Nonadmitted Assets	3 Change in Total Nonadmitted Assets (Col. 2 - Col. 1)
1. Bonds (Schedule D)			
2. Stocks (Schedule D):			
2.1 Preferred stocks			
2.2 Common stocks			
3. Mortgage loans on real estate (Schedule B):			
3.1 First liens			
3.2 Other than first liens			
4. Real estate (Schedule A):			
4.1 Properties occupied by the company			
4.2 Properties held for the production of income			
4.3 Properties held for sale			
5. Cash (Schedule E - Part 1), cash equivalents (Schedule E - Part 2) and short-term investments (Schedule DA)			
6. Contract loans			
7. Derivatives (Schedule DB)			
8. Other invested assets (Schedule BA)			
9. Receivables for securities			
10. Securities lending reinvested collateral assets (Schedule DL)			
11. Aggregate write-ins for invested assets			
12. Subtotals, cash and invested assets (Lines 1 to 11)			
13. Title plants (for Title insurers only)			
14. Investment income due and accrued			
15. Premiums and considerations:			
15.1 Uncollected premiums and agents' balances in the course of collection			
15.2 Deferred premiums, agents' balances and installments booked but deferred and not yet due			
15.3 Accrued retrospective premiums and contracts subject to redetermination			
16. Reinsurance:			
16.1 Amounts recoverable from reinsurers			
16.2 Funds held by or deposited with reinsured companies			
16.3 Other amounts receivable under reinsurance contracts			
17. Amounts receivable relating to uninsured plans			
18.1 Current federal and foreign income tax recoverable and interest thereon			
18.2 Net deferred tax asset			
19. Guaranty funds receivable or on deposit			
20. Electronic data processing equipment and software			
21. Furniture and equipment, including health care delivery assets			
22. Net adjustment in assets and liabilities due to foreign exchange rates			
23. Receivables from parent, subsidiaries and affiliates			
24. Health care and other amounts receivable			
25. Aggregate write-ins for other-than-invested assets			
26. Total assets excluding Separate Accounts, Segregated Accounts and Protected Cell Accounts (Lines 12 to 25)			
27. From Separate Accounts, Segregated Accounts and Protected Cell Accounts			
28. Total (Lines 26 and 27)			

DETAILS OF WRITE-IN LINES			
1101.			
1102.			
1103.			
1198. Summary of remaining write-ins for Line 11 from overflow page			
1199. Totals (Lines 1101 through 1103 plus 1198) (Line 11 above)			
2501.			
2502.			
2503.			
2598. Summary of remaining write-ins for Line 25 from overflow page			
2599. Totals (Lines 2501 through 2503 plus 2598) (Line 25 above)			

NOTES TO FINANCIAL STATEMENTS

1. Summary of Significant Accounting Policies and Going Concern

A. Accounting Practices

Effective January 1, 2001, and subject to any deviations prescribed or permitted by the State of Texas, the accompanying financial statements of American States Lloyds Insurance Company (the "Company") have been prepared in conformity with the National Association of Insurance Commissioners ("NAIC") Accounting Practices and Procedures Manual ("APP Manual").

The Company does not have any prescribed or permitted accounting practices.

NET INCOME

	SSAP #	F/S Page	F/S Line #	2021	2020
(1) American States Lloyds Insurance Company state basis (Page 4, Line 20, Columns 1 & 2)	X X X	X X X	X X X	61,046	56,733
(2) State Prescribed Practices that are an increase/(decrease) from NAIC SAP:					

Details of Depreciation of Fixed Assets		SSAP #	F/S Page	F/S Line #	2021	2020
.....						
Totals (Lines 01A0201 through 01A0225)					0	0

(3) State Permitted Practices that are an increase/(decrease) from NAIC SAP:

Details of Depreciation of Home Office Property		SSAP #	F/S Page	F/S Line #	2021	2020
.....						
Totals (Lines 01A0301 through 01A0325)					0	0

(4) NAIC SAP	(1 - 2 - 3 = 4)	X X X	X X X	X X X	61,046	56,733
--------------	-----------------	-------	-------	-------	--------	--------

SURPLUS

	SSAP #	F/S Page	F/S Line #	2021	2020
(5) American States Lloyds Insurance Company state basis (Page 3, Line 37, Columns 1 & 2)	X X X	X X X	X X X	3,930,742	3,871,696
(6) State Prescribed Practices that are an increase/(decrease) from NAIC SAP:					

e.g., Goodwill, net, Fixed Assets, Net		SSAP #	F/S Page	F/S Line #	2021	2020
.....						
Totals (Lines 01A0601 through 01A0625)					0	0

(7) State Permitted Practices that are an increase/(decrease) from NAIC SAP:

Home Office Property		SSAP #	F/S Page	F/S Line #	2021	2020
.....						
Totals (Lines 01A0701 through 01A0725)					0	0

(8) NAIC SAP	(5 - 6 - 7 = 8)	X X X	X X X	X X X	3,930,742	3,871,696
--------------	-----------------	-------	-------	-------	-----------	-----------

B. Use of Estimates in the Preparation of the Financial Statements

The preparation of financial statements requires management to make estimates and assumptions that affect the reported amounts of assets, liabilities, revenues, and expenses. It also requires estimates in the disclosure of contingent assets and liabilities. Actual results could differ from these estimates.

C. Accounting Policy

NOTES TO FINANCIAL STATEMENTS

Premiums are earned over the terms of the related policies and reinsurance contracts. Unearned premium reserves are established to cover the unexpired portion of premiums written. Such reserves are computed by pro-rata methods. Expenses incurred in connection with acquiring new insurance business, including acquisition costs such as sales commissions, are charged to operations as incurred. Expenses incurred are reduced for ceding allowances received or receivable.

In addition, the Company applies the following accounting policies, where applicable:

1.Short term investments are carried at cost, adjusted where appropriate for amortization of premium or discount, or fair value as specified by the Purposes and Procedures Manual of the NAIC Investment Analysis Office (SVO Manual).

2.Bonds are carried at cost, adjusted where appropriate for amortization of premium or discount, or fair value as specified by the SVO Manual.

3.Common stocks are carried at fair value, except that investments in stocks of subsidiaries, controlled and affiliated ("SCA") companies are carried according to Note 1C(7).

4.Preferred stocks are carried at cost or fair value as specified by the SVO Manual. Preferred stocks of SCA companies are carried according to Note 1C(7).

5.Mortgage loans are carried at amortized cost, less impairments as specified by the SVO Manual.

6.Mortgage backed/asset backed securities are carried at amortized cost or fair value based on guidance in the SVO Manual. Prepayment assumptions for mortgage backed/asset backed securities are based on market expectations. The retrospective adjustment method and prospective interest method are used to value all mortgage backed/asset backed securities.

7.Investments in SCA companies are carried in accordance with SSAP No. 97, Investments in Subsidiary, Controlled, and Affiliated Entities, A Replacement of SSAP No. 88, and the SVO Manual.

8.Investments in joint ventures, partnerships, and limited liability companies are carried in accordance with SSAP No. 48, Joint Ventures, Partnerships and Limited Liability Companies, and the SVO Manual.

9.Derivative Securities, refer to Note 8 .

10.Investment income is anticipated as a factor in the premium deficiency calculation, in accordance with SSAP No. 53, Property Casualty Contracts - Premiums. Refer to Note 30.

11.Unpaid losses and loss adjustment expenses include an amount determined from individual case estimates and an amount, based on past experience, for losses and loss adjustment expenses incurred but not reported. Such liabilities are necessarily based on assumptions and estimates, and while management believes the amount is adequate, the ultimate liability may be in excess of or less than the amount provided. The methods, for making such estimates and for establishing the resulting liability, are continually reviewed and follow current standards of practice. Any adjustments to the liability are reflected in the period that they are determined.

12.The Company did not change its capitalization policy in 2021

13.The Company has no pharmaceutical rebate receivables.

D. Going Concern

The Company is not aware of any conditions that would impact its ability to continue as a going concern.

2. Accounting Changes and Corrections of Errors

There were no material changes in accounting principles and/or correction of errors.

3. Business Combinations and Goodwill

A. Statutory Purchase Method

The Company did not enter into any statutory purchases during the year.

Not Applicable

B. Statutory Merger

The Company did not enter into any statutory mergers during the year.

C. Impairment Loss

The Company did not recognize an impairment loss during the period.

D. Subcomponents and Calculation of Adjusted Surplus and Total Admitted Goodwill

NOTES TO FINANCIAL STATEMENTS

Calculation of Limitation Using Prior Quarter Numbers	Current Reporting Period
--	-----------------------------

(1)	Capital & Surplus	3,908,070	X X X	
Less:				
(2)	Admitted Positive Goodwill	0	X X X	
(3)	Admitted EDP Equipment & Operating System Software XX	0	X X X	
(4)	Admitted Net Deferred Taxes XXX	0	X X X	
(5)	Adjusted Capital and Surplus (Line 1-2-3-4)	3,908,070	X X X	
(6)	Limitation on amount of goodwill (adjusted capital and surplus goodwill limitation [Line 5*10%])	390,807		
(7)	Current period reported Admitted Goodwill XXX	X X X		0
(8)	Current Period Admitted Goodwill as a % of prior period Adjusted Capital and Surplus (Line 7/Line 5)	X X X		0

4. Discontinued Operations

The Company has no discontinued operations

A. Discontinued Operations Disposed of or Classified as Held for Sale

Not Applicable

B. Change in Plan of Sale of Discontinued Operation

Not Applicable

C. Nature of Any Significant Continuing Involvement with Discontinued Operations After Disposal

Not Applicable

D. Equity Interest Retained in the Discontinued Operation After Disposal

Not Applicable

5. Investments

A. Mortgage Loans, including Mezzanine Real Estate Loans

(1) Not Applicable

(2) Not Applicable

(3) Taxes, assessments and any amounts advanced and not included in the mortgage loan total:

Current Year	Prior Year
0	0

(4) Age Analysis of Mortgage Loans and Identification of Mortgage Loans in the Insurer is a Participant or Co-lender in a Mortgage Loan Agreement:

a. Current Year

1. Recorded Investment (All)

	Farm	Residential		Commercial		Mezzanine	Total
		Insured	All Other	Insured	All Other		
(a) Current Year	\$ 0	0	0	0	0	0	0
(b) 30 - 59 Days Past Due	\$ 0	0	0	0	0	0	0
(c) 60 - 89 Days Past Due	\$ 0	0	0	0	0	0	0
(d) 90 - 179 Days Past Due	\$ 0	0	0	0	0	0	0
(e) 180 + Days Past Due	\$ 0	0	0	0	0	0	0
2. Accruing Interest 90 - 179 Days Past Due							
(a) Recorded Investment	\$ 0	0	0	0	0	0	0
(b) Interest Accrued	\$ 0	0	0	0	0	0	0
3. Accruing Interest 180 + Days Past Due							
(a) Recorded Investment	\$ 0	0	0	0	0	0	0
(b) Interest Accrued	\$ 0	0	0	0	0	0	0
4. Interest Reduced							
(a) Recorded Investment	\$ 0	0	0	0	0	0	0
(b) Number of Loans	\$ 0	0	0	0	0	0	0
(c) Percent Reduced	0.000%	0.000%	0.000%	0.000%	0.000%	0.000%	0.000%
5. Participant or Co-lender in a Mortgage Loan Agreement							
(a) Recorded Investment	\$ 0	0	0	0	0	0	0

NOTES TO FINANCIAL STATEMENTS

b. Prior Year

1. Recorded Investment								
(a) Current Year	\$	0	0	0	0	0	0	0
(b) 30 - 59 Days Past Due	\$	0	0	0	0	0	0	0
(c) 60 - 89 Days Past Due	\$	0	0	0	0	0	0	0
(d) 90 - 179 Days Past Due	\$	0	0	0	0	0	0	0
(e) 180 + Days Past Due	\$	0	0	0	0	0	0	0
2. Accruing Interest 90 - 179 Days Past Due								
(a) Recorded Investment	\$	0	0	0	0	0	0	0
(b) Interest Accrued	\$	0	0	0	0	0	0	0
3. Accruing Interest 180 + Days Past Due								
(a) Recorded Investment	\$	0	0	0	0	0	0	0
(b) Interest Accrued	\$	0	0	0	0	0	0	0
4. Interest Reduced								
(a) Recorded Investment	\$	0	0	0	0	0	0	0
(b) Number of Loans	\$	0	0	0	0	0	0	0
(c) Percent Reduced	\$	0.000%	0.000%	0.000%	0.000%	0.000%	0.000%	0.000%
5. Participant or Co-lender in a Mortgage Loan Agreement								
(a) Recorded Investment	\$	0	0	0	0	0	0	0

(5) Investment in Impaired Loans With or Without Allowance for Credit Losses and Impaired Loans Subject to a Participant or Co-Lender Mortgage Loan Agreement for Which the Reporting Entity is Restricted from Unilaterally Foreclosing on the Mortgage Loan:

a. Current Year

	Farm	Residential		Commercial		Mezzanine	Total
		Insured	All Other	Insured	All Other		
1. With Allowance for Credit Losses	\$	0	0	0	0	0	0
2. No Allowance for Credit Losses	\$	0	0	0	0	0	0
3. Total (1+2)	\$	0	0	0	0	0	0
4. Subject to a participant or co-lender mortgage loan agreement for which the reporting entity is restricted from unilaterally foreclosing on the mortgage loan	\$	0	0	0	0	0	0
b. Prior Year							
1. With Allowance for Credit Losses	\$	0	0	0	0	0	0
2. No Allowance for Credit Losses	\$	0	0	0	0	0	0
3. Total (1+2)	\$	0	0	0	0	0	0
4. Subject to a participant or co-lender mortgage loan agreement for which the reporting entity is restricted from unilaterally foreclosing on the mortgage loan	\$	0	0	0	0	0	0

(6) Investment in Impaired Loans - Average Recorded Investment, Interest Income Recognized, Recorded Investment on Nonaccrual Status and Amount of Interest Income Recognized Using a Cash-Basis Method of Accounting:

a. Current Year

	Farm	Residential		Commercial		Mezzanine	Total
		Insured	All Other	Insured	All Other		
1. Average Recorded Investment	\$	0	0	0	0	0	0
2. Interest Income Recognized	\$	0	0	0	0	0	0
3. Recorded Investments on Nonaccrual Status	\$	0	0	0	0	0	0
4. Amount of Interest Income Recognized Using a Cash-Basis Method of Accounting	\$	0	0	0	0	0	0
b. Prior Year							
1. Average Recorded Investment	\$	0	0	0	0	0	0
2. Interest Income Recognized	\$	0	0	0	0	0	0
3. Recorded Investments on Nonaccrual Status	\$	0	0	0	0	0	0
4. Amount of Interest Income Recognized Using a Cash-Basis Method of Accounting	\$	0	0	0	0	0	0

(7) Allowance for Credit Losses:

	Current Year	Prior Year
a. Balance at beginning of period	\$	0
b. Additions charged to operations	\$	0
c. Direct write-downs charged against the allowances	\$	0
d. Recoveries of amounts previously charged off	\$	0
e. Balance at end of period	\$	0

(8) Mortgage Loans Derecognized as a Result of Foreclosure:

	Current Year
a. Aggregate amount of mortgage loans derecognized	\$
b. Real estate collateral recognized	\$
c. Other collateral recognized	\$
d. Receivables recognized from a government guarantee of the foreclosed mortgage loan	\$

(9) Not Applicable

B. Debt Restructuring

NOTES TO FINANCIAL STATEMENTS

	Current Year	Prior Year
(1) Total recorded investment in restructured loans, as of year end	\$ 0	0
(2) The realized capital losses related to these loans	\$ 0	0
(3) Total contractual commitments to extend credit to debtors owing re whose terms have been modified in troubled debt restructurings	\$ 0	0

(4) Not Applicable

C. Reverse Mortgages

(1) Not Applicable

(2) Not Applicable

D. Loan-Backed Securities

(1) Prepayment speed assumptions are updated monthly with data sourced from the Bloomberg data service.

	(1)	(2)	(3)
	Amortized C Basis Before Other-than- Temporary Impairment	Other-than- Temporary Impairment Recognized in	Fair Value 1 - 2
OTTI recognized 1st Quarter			
a. Intent to sell	\$ 0	0	0
b. Inability or lack of intent to retain the investment in the security for a recover the amortized cost basis	\$ 0	0	0
c. Total 1st Quarter	\$ 0	0	0
OTTI recognized 2nd Quarter			
d. Intent to sell	\$ 0	0	0
e. Inability or lack of intent to retain the investment in the security for a recover the amortized cost basis	\$ 0	0	0
f. Total 2nd Quarter	\$ 0	0	0
OTTI recognized 3rd Quarter			
g. Intent to sell	\$ 0	0	0
h. Inability or lack of intent to retain the investment in the security for a recover the amortized cost basis	\$ 0	0	0
i. Total 3rd Quarter	\$ 0	0	0
OTTI recognized 4th Quarter			
j. Intent to sell	\$ 0	0	0
k. Inability or lack of intent to retain the investment in the security for a recover the amortized cost basis	\$ 0	0	0
l. Total 4th Quarter	\$ 0	0	0
m. Annual Aggregate Total	\$ X X X	0	

(4) All impaired Loan Backed Securities for which an other-than-temporary impairment has not been recognized in earnings as a realized loss as of December 31, 2021:

a. The aggregate Amount of unrealized losses:

	(1)
Less than 12 months	\$ 0
12 Months or Longer	\$ 0

b. The aggregate related fair value of securities with unrealized losses:

Less than 12 months	\$ 0
12 Months or Longer	\$ 0

(5) The Company reviews fixed income securities for impairment on a quarterly basis. Securities are reviewed for both quantitative and qualitative considerations including, but not limited to: (a) the extent of the decline in fair value below book value, (b) the duration of the decline, (c) significant adverse changes in the financial condition or near term prospects of the investment or issuer, (d) significant change in the business climate or credit ratings of the issuer, (e) general market conditions and volatility, (f) industry factors, and (g) the past impairment of the security holding or the issuer. If the Company believes a decline in the value of a particular investment is temporary, the decline is recorded as an unrealized loss in policyholders' equity. If the decline is believed to be "other-than-temporary," and the Company believes it will not be able to collect all cash flows due on its fixed income securities, then the carrying value of the investment is written down to the expected cash flow amount and a realized loss is recorded as a credit impairment.

E. Dollar Repurchase Agreements and/or Securities Lending Transactions

(1) The Company has not entered into any repurchase agreements during the year. Refer to Note 17B for the policy on requiring collateral to security lending.

NOTES TO FINANCIAL STATEMENTS

(2) The Company has not pledged any of its assets as collateral as of December 31, 2021.

F. Repurchase Agreements Transactions Accounted for as Secured Borrowing

(2) Type of Repo Trades Used

- a. Bilateral (YES/NO)
- b. Tri-Party (YES/NO)

1	2	3	4
First Quarter	Second Quarter	Third Quarter	Fourth Quarter
NO	NO	NO	NO
NO	NO	NO	NO

(3) Original (Flow) & Residual Maturity

- a. Maximum Amount
 - 1. Open – No Maturity
 - 2. Overnight
 - 3. 2 Days to 1 Week
 - 4. > 1 Week to 1 Month
 - 5. > 1 Month to 3 Months
 - 6. > 3 Months to 1 Year
 - 7. > 1 Year

FIRST	SECOND	THIRD	FOURTH
QUARTER	QUARTER	QUARTER	QUARTER
0	0	0	0
0	0	0	0
0	0	0	0
0	0	0	0
0	0	0	0
0	0	0	0
0	0	0	0

- b. Ending Balance
 - 1. Open – No Maturity
 - 2. Overnight
 - 3. 2 Days to 1 Week
 - 4. > 1 Week to 1 Month
 - 5. > 1 Month to 3 Months
 - 6. > 3 Months to 1 Year
 - 7. > 1 Year

FIRST	SECOND	THIRD	FOURTH
QUARTER	QUARTER	QUARTER	QUARTER
0	0	0	0
0	0	0	0
0	0	0	0
0	0	0	0
0	0	0	0
0	0	0	0
0	0	0	0

G. Reverse Repurchase Agreements Transactions Accounted for as Secured Borrowing

(2) Type of Repo Trades Used

- a. Bilateral (YES/NO)
- b. Tri-Party (YES/NO)

1	2	3	4
First Quarter	Second Quarter	Third Quarter	Fourth Quarter
NO	NO	NO	NO
NO	NO	NO	NO

H. Repurchase Agreements Transactions Accounted for as a Sale

(2) Type of Repo Trades Used

- a. Bilateral (YES/NO)
- b. Tri-Party (YES/NO)

1	2	3	4
First Quarter	Second Quarter	Third Quarter	Fourth Quarter
NO	NO	NO	NO
NO	NO	NO	NO

I. Reverse Repurchase Agreements Transactions Accounted for as a Sale

(2) Type of Repo Trades Used

- a. Bilateral (YES/NO)
- b. Tri-Party (YES/NO)

1	2	3	4
First Quarter	Second Quarter	Third Quarter	Fourth Quarter
NO	NO	NO	NO
NO	NO	NO	NO

J. Real Estate

Not Applicable

K. The Company does not hold investments in low-income housing tax credits.

L. Restricted Assets

NOTES TO FINANCIAL STATEMENTS

(1) Restricted Assets (Including Pledged)

Restricted Asset Category	Gross (Admitted & Nonadmitted) Restricted						
	Current Year					6 Total From Prior Year	7 Increase/ (Decrease) (5 minus 6)
	1 Total General Account (G/A)	2 G/A Supporting S/A Activity (a)	3 Total Separate Account (S/A) Restricted Ass	4 S/A Assets Supporting G/A Activity (b)	5 Total (1 plus 3)		
a. Subject to contractual obligation for which liability is not shown	\$ 0	0	0	0	0	0	0
b. Collateral held under security lending agreements	\$ 0	0	0	0	0	0	0
c. Subject to repurchase agreements	\$ 0	0	0	0	0	0	0
d. Subject to reverse repurchase agreements	\$ 0	0	0	0	0	0	0
e. Subject to dollar repurchase agreements	\$ 0	0	0	0	0	0	0
f. Subject to dollar reverse repurchase agreements	\$ 0	0	0	0	0	0	0
g. Placed under option contracts	\$ 0	0	0	0	0	0	0
h. Letter stock or securities restricted as to sale - excluding FHLB capital stock	\$ 0	0	0	0	0	0	0
i. FHLB capital stock	\$ 0	0	0	0	0	0	0
j. On deposit with states	\$ 2,090,935	0	0	0	2,090,935	2,086,953	3,982
k. On deposit with other regulatory bodies	\$ 0	0	0	0	0	0	0
l. Pledged as collateral to FHLB (including assets backing funding agreements)	\$ 0	0	0	0	0	0	0
m. Pledged as collateral not captured in other categories	\$ 0	0	0	0	0	0	0
n. Other restricted Assets	\$ 0	0	0	0	0	0	0
o. Total Restricted Assets	\$ 2,090,935	0	0	0	2,090,935	2,086,953	3,982

(a) Subset of Column 1

(b) Subset of Column 3

Restricted Asset Category	Current Year			
	8	9	Percentage	
	Total Nonadmitted Restricted	Total Admitted Restricted (5 minus 8)	10	11
			Gross (Admitted Nonadmitted) Restricted to Total Assets (c)	Admitted Restricted to Admitted Asset (d)
a. Subject to contractual obligation for which liability is not shown	\$ 0	0	0.000	0.000
b. Collateral held under security lending agreements	\$ 0	0	0.000	0.000
c. Subject to repurchase agreements	\$ 0	0	0.000	0.000
d. Subject to reverse repurchase agreements	\$ 0	0	0.000	0.000
e. Subject to dollar repurchase agreements	\$ 0	0	0.000	0.000
f. Subject to dollar reverse repurchase agreements	\$ 0	0	0.000	0.000
g. Placed under option contracts	\$ 0	0	0.000	0.000
h. Letter stock or securities restricted as to sale - excluding FHLB capital stock	\$ 0	0	0.000	0.000
i. FHLB capital stock	\$ 0	0	0.000	0.000
j. On deposit with states	\$ 0	2,090,935	53.035	53.035
k. On deposit with other regulatory bodies	\$ 0	0	0.000	0.000
l. Pledged as collateral to FHLB (including assets backing funding agreements)	\$ 0	0	0.000	0.000
m. Pledged as collateral not captured in other categories	\$ 0	0	0.000	0.000
n. Other restricted Assets	\$ 0	0	0.000	0.000
o. Total Restricted Assets	\$ 0	2,090,935	53.035	53.035

(c) Column 5 divided by Asset Page, Column 1, Line 28

(d) Column 9 divided by Asset Page, Column 3, Line 28

M. Working Capital Finance Investments

Not Applicable

N. Offsetting and Netting of Assets and Liabilities

Not Applicable

O. 5GI Securities

Not Applicable

P. Short Sales

NOTES TO FINANCIAL STATEMENTS

Not Applicable

Q. Prepayment Penalty and Acceleration Fees

Not Applicable

R. Reporting Entity's Share of Cash Pool by Asset type.

Not Applicable

6. Joint Ventures, Partnerships and Limited Liability Companies

A. Detail for Those Greater than 10% of Admitted Assets

Not Applicable

B. Writedowns for Impairments of Joint Ventures, Partnerships, & LLCs

Not Applicable

7. Investment Income

A. The Company does not admit investment income due and accrued if amounts are over 90 days past due.

B. No amounts were excluded as of December 31, 2021.

8. Derivative Instruments

A. Derivatives under SSAP No. 86—Derivatives

(1) The Company's investment activities do not include derivatives. However, the Company may acquire derivatives as additions to bond, common stock, or preferred stock investments. These derivatives are ancillary to the overall investment and are immaterial to the underlying investment portfolio.

(2) Not Applicable

(3) Not Applicable

(4) Not Applicable

(5) Not Applicable

(6) Not Applicable

(7) Not Applicable

B. Derivatives under SSAP No. 108—Derivative Hedging Variable Annuity Guarantees

(1) Discussion of hedged item/hedging instruments and hedging strategy:

Not Applicable

9. Income Taxes

A. The components of the net deferred tax asset/(liability) at Dec. 31 are as follows:

	12/31/2021			12/31/2020		
	(1) Ordinary	(2) Capital	(3) (Col 1 + 2) Total	(4) Ordinary	(5) Capital	(6) (Col 4 + 5) Total
a. Gross Deferred Tax Assets	\$ 7,000	0	7,000	7,000	0	7,000
b. Statutory Valuation Allowance Adjustments	\$ 0	0	0	0	0	0
c. Adjusted Gross Deferred Tax Assets (1a - 1b)	\$ 7,000	0	7,000	7,000	0	7,000
d. Deferred Tax Assets Nonadmitted	\$ 0	0	0	0	0	0
e. Subtotal Net Admitted Deferred Tax Asset (1c - 1d)	\$ 7,000	0	7,000	7,000	0	7,000
f. Deferred Tax Liabilities	\$ 10,000	0	10,000	8,000	0	8,000
g. Net Admitted Deferred Tax Assets / (Net Deferred Tax Liability) (1e - 1f)	\$ (3,000)	0	(3,000)	(1,000)	0	(1,000)

NOTES TO FINANCIAL STATEMENTS

	Change		
	(7)	(8)	(9)
	(Col 1 - 4) Ordinary	(Col 2- 5) Capital	(Col 7 + 8) Total
a. Gross Deferred Tax Assets	\$ 0	0	0
b. Statutory Valuation Allowance Adjustments	\$ 0	0	0
c. Adjusted Gross Deferred Tax Assets (1a - 1b)	\$ 0	0	0
d. Deferred Tax Assets Nonadmitted	\$ 0	0	0
e. Subtotal Net Admitted Deferred Tax Asset (1c - 1d)	\$ 0	0	0
f. Deferred Tax Liabilities	\$ 2,000	0	2,000
g. Net Admitted Deferred Tax Assets / (Net Deferred Tax Liability) (1e - 1f)	\$ (2,000)	0	(2,000)

	12/31/2021			12/31/2020		
	(1) Ordinary	(2) Capital	(3) (Col 1 + 2) Total	(4) Ordinary	(5) Capital	(6) (Col 4 + 5) Total
Admission Calculation Components SSAP No. 101						
a. Federal Income Taxes Paid In Prior Years Recoverable Through Loss Carrybacks.	\$ 0	0	0	0	0	0
b. Adjusted Gross Deferred Tax Assets Expected To Be Realized (Excluding The Amount Of Deferred Tax Assets From 2(a) above) After Application of the Threshold Limitation. (The Lesser of 2(b)1 and 2(b)2 Below)	\$ 0	0	0	0	0	0
1. Adjusted Gross Deferred Tax Assets to be Realized Following the Balance Sheet Date.	\$ 0	0	0	0	0	0
2. Adjusted Gross Deferred Tax Assets Allowed per Limitation Threshold	\$ X X X	X X X	589,912	X X X	X X X	582,555
c. Adjusted Gross Deferred Tax Assets (Excluding the Amount Of Deferred Tax Assets From 2(a) and 2(b) above) Offset by Gross Deferred Tax Liabilities.	\$ 7,000	0	7,000	7,000	0	7,000
d. Deferred Tax Assets Admitted as the result of application of SSAP No. 101. Total (2(a) + 2(b) + 2(c))	\$ 7,000	0	7,000	7,000	0	7,000

	Change		
	(1)	(2)	(3)
	(Col 1 - 4) Ordinary	(Col 2- 5) Capital	(Col 7 + 8) Total
Admission Calculation Components SSAP No. 101			
a. Federal Income Taxes Paid In Prior Years Recoverable Through Loss Carrybacks.	\$ 0	0	0
b. Adjusted Gross Deferred Tax Assets Expected To Be Realized (Excluding The Amount Of Deferred Tax Assets From 2(a) above) After Application of the Threshold Limitation. (The Lesser of 2(b)1 and 2(b)2 Below)	\$ 0	0	0
1. Adjusted Gross Deferred Tax Assets to be Realized Following the Balance Sheet Date.	\$ 0	0	0
2. Adjusted Gross Deferred Tax Assets Allowed per Limitation Threshold	\$ X X X	X X X	7,357
c. Adjusted Gross Deferred Tax Assets (Excluding the Amount Of Deferred Tax Assets From 2(a) and 2(b) above) Offset by Gross Deferred Tax Liabilities.	\$ 0	0	0
d. Deferred Tax Assets Admitted as the result of application of SSAP No. 101. Total (2(a) + 2(b) + 2(c))	\$ 0	0	0

	2021	2020
	a. Ratio Percentage Used to Determine Recover Period And Threshold Limitation Amount.	36191.30%
b. Amount Of Adjusted Capital And Surplus Used To Determine Recovery Period And Threshold Limitation In 2(b)2 Above.	\$ 3,930,742.000	3,871,697.000

	12/31/2021	12/31/2020	Change
--	------------	------------	--------

NOTES TO FINANCIAL STATEMENTS

Impact of Tax-Planning Strategies	(1)	(2)	(3)	(4)	(5)	(6)
a. Determination of Adjusted Gross Deferred Tax Assets and Net Admitted Deferred Tax Assets, By Tax Character As A Percentage.	Ordinary	Capital	Ordinary	Capital	(Col 1 - 3) Ordinary	(Col 2 - 4) Capital
1. Adjusted Gross DTAs Amount From Note 9A1(c)	\$ 7,000	0	7,000	0	0	0
2. Percentage of Adjusted Gross DTAs By Tax Character Attributable To The Impact of Tax Planning Strategies	0.000	0.000	0.000	0.000	0.000	0.000
3. Net Admitted Adjusted Gross DTAs Amount from Note 9A1(e)	\$ 7,000	0	7,000	0	0	0
4. Percentage of Net Admitted Adjusted Gross DTAs by Tax Character Attributable To The Impact of Tax Planning Strategies	0.000	0.000	0.000	0.000	0.000	0.000

b. Does the Company's Tax-planning Strategies include the use of reinsurance? NO

B. Regarding deferred tax liabilities that are not recognized:

The Company does not have any DTLs described in SSAP No. 101 Income Taxes, a Replacement of SSAP No. 10R and SSAP No. 10, paragraph 23.

C. Current income taxes incurred consist of the following major components:

	(1)	(2)	(3)
	12/31/2021	12/31/2020	(Col 1 - 2) Change
(1) Current Income Tax			
a. Federal	\$ 12,270	13,000	(730)
b. Foreign	0	0	0
c. Subtotal	\$ 12,270	13,000	(730)
d. Federal Income Tax on net capital gains	\$ 1,730	0	1,730
e. Utilization of capital loss carry-forwards	0	0	0
f. Other	0	0	0
g. Federal and foreign income taxes incurred	\$ 14,000	13,000	1,000

(2) Deferred Tax Assets:

a. Ordinary

1. Discounting of unpaid losses	\$ 0	0	0
2. Unearned premium reserve	0	0	0
3. Policyholder reserves	0	0	0
4. Investments	7,000	7,000	0
5. Deferred acquisition costs	0	0	0
6. Policyholder dividends accrual	0	0	0
7. Fixed assets	0	0	0
8. Compensation and benefits accrual	0	0	0
9. Pension accrual	0	0	0
10. Receivables - nonadmitted	0	0	0
11. Net operating loss carry-forward	0	0	0
12. Tax credit carry-forward	0	0	0
13 Other (including items <5% of total ordinary tax assets)	0	0	0
99. Subtotal	\$ 7,000	7,000	0

b. Statutory valuation allowance adjustment	\$ 0	0	0
c. Nonadmitted	0	0	0
d. Admitted ordinary deferred tax assets (2a99 - 2b - 2c)	\$ 7,000	7,000	0

e. Capital:

(1) Investments	\$ 0	0	0
(2) Net capital loss carry-forward	0	0	0
(3) Real estate	0	0	0
(4) Other (including items <5% of total capital tax assets)	0	0	0
(99) Subtotal	\$ 0	0	0

f. Statutory valuation allowance adjustment	\$ 0	0	0
g. Nonadmitted	0	0	0
h. Admitted capital deferred tax assets (2e99 - 2f - 2g)	\$ 0	0	0
i. Admitted deferred tax assets (2d + 2h)	\$ 7,000	7,000	0

NOTES TO FINANCIAL STATEMENTS

(3) Deferred Tax Liabilities:

a. Ordinary

1. Investments	\$ 10,000	8,000	2,000
2. Fixed assets	\$ 0	0	0
3. Deferred and uncollected premium	\$ 0	0	0
4. Policyholder reserves	\$ 0	0	0
5. Other Compensation	\$ 0	0	0
6. Other (including items <5% of total ordinary tax liabilities)	\$ 0	0	0
99. Subtotal	\$ 10,000	8,000	2,000

b. Capital:

1. Investments	\$ 0	0	0
2. Real Estate	\$ 0	0	0
3. Other (including items <5% of total capital tax liabilities)	\$ 0	0	0
99. Subtotal	\$ 0	0	0

c. Deferred tax liabilities (3a99 + 3b99)	\$ 10,000	8,000	2,000
---	-----------	-------	-------

(4) Net deferred tax assets/liabilities (2i - 3c)	\$ (3,000)	(1,000)	(2,000)
---	------------	---------	---------

D. Effective tax rates differ from the current statutory rate of 21% principally due to the effects of accretion of market discount.

E. The Company has no net operating loss or tax credit carry-forwards available to offset future net income subject to Federal income tax.

(1) The amount of Federal income taxes incurred and available for recoupment in the event of future losses is \$14,000 from the current year and \$13,000 from the preceding year.

(2) The Company does not have deposits admitted under Section 6603 of the Internal Revenue Code.

F. The method of federal income tax allocation is subject to a written agreement. Allocation is based upon separate return calculations with credit applied for losses as appropriate. The Company has the enforceable right to recoup prior year payments in the event of future losses.

The Company's Federal income tax return is consolidated with the following entities:

Andover, Inc.	Liberty Mutual Holding Company Inc.
America First Insurance Company	Liberty Mutual Insurance Company
America First Lloyd's Insurance Company	Liberty Mutual Personal Insurance Company
American Economy Insurance Company	Liberty Mutual Technology Group, Inc.
American Fire and Casualty Company	Liberty Northwest Insurance Corporation
American States Insurance Company	Liberty Personal Insurance Company
American States Insurance Company of Texas	Liberty RE (Bermuda) Limited
American States Lloyds Insurance Company	Liberty Sponsored Insurance (Vermont), Inc.
American States Preferred Insurance Company	Liberty Surplus Insurance Corporation
Barrier Ridge LLC	LIH-RE of America Corporation
Berkeley Management Corporation	LIU Specialty Insurance Agency Inc.
Colorado Casualty Insurance Company	LM General Insurance Company
Consolidated Insurance Company	LM Insurance Corporation
Diversified Settlements, Inc.	LM Property and Casualty Insurance Company
Emerald City Insurance Agency, Inc.	LMCRT-FRE-01 IC
Employers Insurance Company of Wausau	LMHC Massachusetts Holdings Inc.
Excelsior Insurance Company	Managed Care Associates Inc.
Excess Risk Reinsurance Inc.	Mid-American Fire & Casualty Company
F.B. Beattie & Co., Inc.	Nationale Borg Reinsurance N.V.
First National Insurance Company of America	North Pacific Insurance Company
First State Agency Inc.	Ocasco Budget, Inc.
General America Corporation	OCI Printing, Inc.
General America Corporation of Texas	Ohio Casualty Corporation
General Insurance Company of America	Ohio Security Insurance Company
Golden Eagle Insurance Corporation	Open Seas Solutions, Inc.
Gulf States AIF, Inc.	Oregon Automobile Insurance Company
Hawkeye-Security Insurance Company	Peerless Indemnity Insurance Company
Indiana Insurance Company	Peerless Insurance Company
Insurance Company of Illinois	Pymatuning, Inc.
Ironshore Holdings (US) Inc.	Rianoc Research Corporation
Ironshore Indemnity Inc.	SAFECARE Company, Inc.
Liberty Specialty Markets Bermuda Limited	Safeco Corporation
Ironshore Management Inc.	Safeco General Agency, Inc.
Ironshore Services Inc.	Safeco Insurance Company of America
Ironshore Specialty Insurance Company	Safeco Insurance Company of Illinois
Ironshore Surety Holdings Inc.	Safeco Insurance Company of Indiana

NOTES TO FINANCIAL STATEMENTS

LEXCO Limited	Safeco Insurance Company of Oregon
Liberty-USA Corporation	Safeco Lloyds Insurance Company
Liberty Energy Canada, Inc.	Safeco National Insurance Company
Liberty Financial Services, Inc.	Safeco Properties, Inc.
Liberty Hospitality Group, Inc.	Safeco Surplus Lines Insurance Company
Liberty Insurance Corporation	San Diego Insurance Company
Liberty Insurance Holdings, Inc.	SCIT, Inc.
Liberty Insurance Underwriters Inc.	The First Liberty Insurance Corporation
Liberty International Holdings Inc.	The Midwestern Indemnity Company
Liberty Life Holdings Inc.	The National Corporation
Liberty Lloyds of Texas Insurance Company	The Netherlands Insurance Company
Liberty Management Services, Inc.	The Ohio Casualty Insurance Company
Liberty Mexico Holdings Inc.	Wausau Business Insurance Company
Liberty Mutual Agency Corporation	Wausau General Insurance Company
Liberty Mutual Credit Risk Transfer PCC Inc.	Wausau Underwriters Insurance Company
Liberty Mutual Fire Insurance Company	West American Insurance Company
Liberty Mutual Group Asset Management Inc.	Winmar Company, Inc.
Liberty Mutual Group Inc.	Workgrid Software, Inc.

G. The Company does not expect the Federal and Foreign income tax loss contingencies, as determined in accordance with SSAP No. 5R, Liabilities, Contingencies and Impairments of Assets, with the modifications provided in SSAP No. 101, Income Taxes – A Replacement of SSAP No. 10R and SSAP No. 10, to significantly increase within twelve months of the reporting date.

H. Repatriation Transition Tax

Not Applicable

I. Alternative Minimum Tax Credit

Not Applicable

10. Information Concerning Parent, Subsidiaries, Affiliates and Other Related Parties

A. General America Corporation of Texas as attorney in fact manages the affairs of the Company, a Texas Lloyds company, pursuant to a power of attorney from each of the Company's underwriters. All the outstanding shares of capital stock of General America Corporation of Texas are held by General America Corporation, a company incorporated in Washington. General America Corporation is wholly owned by Safeco Corporation ("Safeco"), an insurance holding company incorporated in Washington. Safeco is wholly owned by Liberty Mutual Agency Corporation, an insurance holding company incorporated in Delaware. Liberty Mutual Agency Corporation is wholly owned by Liberty Insurance Holdings, Inc., an insurance holding company incorporated in Delaware. Liberty Insurance Holdings, Inc. is wholly owned by Liberty Mutual Insurance Company ("LMIC"), a Massachusetts insurance company. The ultimate parent of LMIC is Liberty Mutual Holding Company Inc., a Massachusetts company.

B. Transactions between the Company and its affiliates are listed on Schedule Y Part 2.

C. Transactions with related party who are not reported on Schedule Y

Not Applicable

D. At December 31, 2021, the Company reported a net \$5,952 due to affiliates. In general, the terms of the intercompany arrangements require settlement at least quarterly.

E. Refer to Note 26 for information regarding the Inter-Company Reinsurance Agreement.

The Company is a party to a management services agreement (the "Agreement") with Liberty Mutual Insurance Company ("LMIC"). Under the Agreement, LMIC may provide the Company with office space, supplies, equipment, telephone and wire services, the use of computers and similar machines and services of personnel employed by LMIC and LMGI. Services provided include, but are not limited to, risk underwriting, claims processing, claims adjustments, policyholder services, contract management and administration. LMIC is reimbursed for the cost of all services which it provides under the Agreement.

The Company is a party to an investment management agreement with Liberty Mutual Group Asset Management Inc. ("LMGAM"). Under this agreement, LMGAM provides investment management services to the Company.

The Company is party to a Federal Tax Sharing Agreement between LMHC and affiliates (Refer to Note 9F).

F. The Company has not made any guarantees or initiated any undertakings for the benefit of affiliates which result in a material contingent exposure of the Company's or affiliates' assets or liabilities.

G. The Company is a member of a holding company structure as illustrated in Schedule Y Part 1.

H. The Company does not own shares of any upstream intermediate or ultimate parent, either directly or indirectly via a downstream subsidiary, controlled or affiliated company.

I. The Company does not own investments in subsidiary, controlled or affiliated entities.

NOTES TO FINANCIAL STATEMENTS

J. The Company did not recognize any impairment write down for its SCA companies during the statement period.

K. The Company does not use CARVM in calculating its investment in its foreign subsidiaries.

L. The Company does not hold any investments in downstream non-insurance holding companies.

M. All SCA Investments

(1) Balance Sheet Value (Admitted and Nonadmitted) All SCAs (Except 8bi Entities)

SCA Entity	Percentage of SCA Ownership	Gross Amount	Admitted Amount	Nonadmitted Amount
------------	-----------------------------	--------------	-----------------	--------------------

Not Applicable

(2) NAIC Filing Response Information

SCA Entity (Should be same entities as shown in M(1) above.)	Type of NAIC Filing *	Date of Filing to the NAIC	NAIC Valuation Amount	NAIC Response Received Y / N	NAIC Disallowe Entities Valuation Method, Resubmission Required Y / N	Code **
---	-----------------------	----------------------------	-----------------------	---------------------------------	--	---------

Not Applicable

N. Investment in Insurance SCAs

Not Applicable

O. SCA Loss Tracking

Not Applicable

11 Debt

A. Debt (Including Capital Notes)

The Company has no debt, including capital notes.

B. FHLB (Federal Home Loan Bank) Agreements

Not Applicable

C. There were no outstanding borrowings as of December 31, 2021

12. Retirement Plans, Deferred Compensation, Postemployment Benefits and Compensated Absences and Other Postretirement Benefit Plans

A. Defined Benefit Plans

The Company does not have any direct employees and therefore, does not have any direct obligations for a defined benefit plan, deferred compensation arrangements, compensated absences or other postretirement benefit plans. Services for the operation of the Company are provided under provisions of the management services agreements, as described in Note 10F.

B.

(1) Information about Plan Assets

Not Applicable

C.

(1) Fair Value Measurements at December 31,2021

Not Applicable

D.

Narrative description of expected long term rate of return assumption

Not Applicable

E.

Defined Contribution Plan

Not Applicable

F.

Multiemployer Plans

NOTES TO FINANCIAL STATEMENTS

Not Applicable

G. Consolidated/Holding Company Plans

Not Applicable

H. Postemployment benefits and Compensated Absences

Not Applicable

I. Impact of Medicare Modernization Act on Postretirement Benefits (INT 04-17)

Not Applicable

13 Capital and Surplus, Dividend Restrictions and Quasi-Reorganizations

A. The Company is organized as a Texas Lloyds Company. It has no authorized shares.

B. Not Applicable

C. There are no dividend restrictions. *

D. The Company did not pay any dividend to its parent in 2021.

E. The maximum amount of dividends that can be paid by Texas-domiciled insurance companies to shareholders without prior approval of the Insurance Commissioner is the greater of (a) 10% of surplus or (b) net income, subject to the availability of accumulated undistributed earnings. The maximum dividend payout that may be made without prior approval in 2022 is \$393,074.

F. The Company does not have restricted unassigned surplus.

G. The Company had no advances to surplus.

H. The Company does not hold stock for special purposes.

I. The Company does not hold special surplus funds.

J. The portion of unassigned funds (surplus) represented or reduced by cumulative unrealized gains and losses: \$ 0
Not Applicable

K. The company issued the following surplus debentures or similar obligations:

Not Applicable

L. The impact of any restatement due to prior quasi-reorganizations is as follows:

Not Applicable

M. Quasi-reorganization (effective date)

Not Applicable

14. Liabilities, Contingencies and Assessments

A. Contingent Commitments

Refer to Note 10E

B. **Assessments**

(1) The Company is subject to guaranty fund and other assessments by the states in which it writes business. Guaranty fund assessments and premium-based assessments are presumed probable when the premium on which the assessments are expected to be based are written. In the case of loss-based assessments, the event that obligates the entity is an entity incurring the losses on which the assessments are expected to be based.

The Company has no net guaranty fund or other assessment liabilities to report. Refer to Note 26.

C. Gain Contingencies

Not Applicable

D. Claims related extra contractual obligations and bad faith losses stemming from lawsuits

NOTES TO FINANCIAL STATEMENTS

Not Applicable

E. Product Warranties

Not Applicable

F. Joint and Several Liabilities

The Company is not a participant in any joint and several liabilities.

G. All Other Contingencies

Lawsuits arise against the Company in the normal course of business. Contingent liabilities arising from litigation, income taxes, and other matters are not considered material in relation to the financial position of the Company.

As disclosed in Note 9 F, the Company is a member of a controlled group for federal income tax purposes, and that group includes LMGI. LMGI is the plan sponsor of the Liberty Mutual Retirement Benefit Plan, a qualified plan under federal law. Pursuant to federal law, if LMGI has not made the minimum required contributions with respect to the Liberty Mutual Retirement Benefit Plan, the Company, jointly and severally with all other members of the controlled group, would be contingently liable to make such contributions.

15. **Leases.**

A. Lessee Leasing Arrangements

- a. The Company has no net lease obligations. Refer to Note 26.

(1)

- a. Not applicable
b. Not applicable
c. Not applicable

B. Leasing as a Significant Part of Lessors's Business Activities

- a. Leasing is not a significant part of the Company's business activities.

16. **Information About Financial Instruments With Off-Balance Sheet Risk And Financial Instruments With Concentrations of Credit Risk**

The Company is not exposed to financial instruments with off-balance sheet risk or concentration of credit risk.

17. **Sale, Transfer and Servicing of Financial Assets and Extinguishments of Liabilities**

A. Transfers of Receivables Reported as Sales

- (1) The Company did not have any transfers of receivables reported as sales.
(2) Not applicable

B. Transfers and Servicing of Financial Assets

Not Applicable

C. Wash Sales:

- (1) Not Applicable.

18. **Gain or Loss to the Reporting Entity from Uninsured Plans and the Uninsured Portion of Partially Insured Plans**

Not Applicable

19. **Direct Premium Written/Produced by Managing General Agents/Third Party Administrators**

The Company has no direct premiums written or produced through managing general agents or third party administrators.

20. **Fair Value Measurements**

A. Inputs Used for Assets and Liabilities Measured at Fair Value

Pursuant to the guidance in SSAP No. 100, Fair Value Measurements, the Company carries no assets or liabilities on its balance sheet measured at fair value.

B. Other Fair Value Disclosures

Not Applicable

NOTES TO FINANCIAL STATEMENTS

C. Aggregate Fair Value of All Financial Instruments

Type of Financial Instrument	Aggregate Fair Value	Admitted Assets	(Level 1)	(Level 2)	(Level 3)	Net Asset Value (NAV)	Not Practicable (Carrying Value)
01 Cash, Cash Equivalents & Short Term	\$ 26,116	26,116	0	0	0	26,116	0
02 Bonds	\$ 3,924,696	3,900,688	3,735,427	189,269	0	0	0
03 Preferred Stock	\$ 0	0	0	0	0	0	0
04 Common Stock	\$ 0	0	0	0	0	0	0
05 Securities Lending	\$ 0	0	0	0	0	0	0
06 Mortgage Loans	\$ 0	0	0	0	0	0	0
07 Surplus Notes	\$ 0	0	0	0	0	0	0
09 Net Derivatives	\$ 0	0	0	0	0	0	0
Total	\$ 3,950,812	3,926,804	3,735,427	189,269	0	26,116	0

D. Reasons Not Practical to Estimate Fair Value

Not Applicable

E. Instruments Measures at Net Asset Value (NAV)

- (1) The Company elected to use NAV for all money market mutual funds in lieu of fair value as NAV is more readily available. These funds are backed by high quality, very liquid short-term instruments and the probability is remote that the funds would be sold for a value other than NAV.

21. Other items

A. Unusual or Infrequent Items

The Company has no unusual or infrequent items to report.

B. Troubled Debt Restructuring

Not Applicable

C. Other Disclosures

1. Interrogatory 6.1

The Company cedes 100% of its business to Liberty Mutual Insurance Company, the lead company in the Liberty Mutual Pool. Liberty Mutual Insurance Company purchases external catastrophe reinsurance coverage.

Interrogatory 6.2

As a member of the Liberty Intercompany Pool, the Pool employs industry recognized catastrophe modeling software to estimate the Probable Maximum Loss. For property exposures, we utilize RMS's RiskLink v15.0 and AIR's Touchstone v3.1 software. For workers' compensation, Liberty Mutual utilizes RiskLink v15.0 from RMS.

Interrogatory 6.3

The Company cedes 100% of its business to Liberty Mutual Insurance Company, the lead company in the Liberty Mutual Pool. Liberty Mutual Insurance Company purchases external catastrophe reinsurance coverage.

2. Florida Special Disability Trust Fund

Not applicable

D. Business Interruption Insurance Recoveries

Not Applicable

E. State Transferable Tax Credits

(1) Description of State Transferrable Tax Credits

The Company does not hold state transferable and/or non-transferable tax credits.

F. Subprime-Mortgage-Related Risk Exposure

NOTES TO FINANCIAL STATEMENTS

(1) The Company has not purchased securities characterized by the market as subprime. The Company looks at such factors as average FICO scores, loan to value ratios, and levels of documentation when evaluating securities.

(2) Direct exposure through investments in subprime mortgage loans.

	1	2	3	4	5
	Book/Adjusted Carrying Value (excluding interest)	Fair Value	Value of Land and Buildings	Other-Than- Temporary Impairment Losses Recognized	Default Rate
a. Mortgages in the process of foreclosure	0	0	0	0	0
b. Mortgages in good standing	0	0	0	0	0
c. Mortgages with restructure terms	0	0	0	0	0
d. Total	0	0	0	0	0

(3) Direct exposure through other investments.

	1	2	3	4
	Actual Cost	Book/Adjusted Carrying Value (excluding interest)	Fair Value	Other-Than- Temporary Impairment Losses Recognized
a. Residential mortgage-backed securities	0	0	0	0
b. Commercial mortgage-backed securities	0	0	0	0
c. Collateralized debt obligations	0	0	0	0
d. Structured securitie	0	0	0	0
e. Equity investment in SCAs *	0	0	0	0
f. Other assets	0	0	0	0
g. Total	0	0	0	0

*ABC Company's subsidiary XYZ Company has investments in subprime mortgages. These investments comprise _____% of the companies invested assets. 0.000

(4) Underwriting exposure to subprime mortgage risk through Mortgage Guaranty or Financial Guaranty insurance coverage.

	1	2	3	4
	Losses Paid in the Current Year	Losses Incurred in the Current Year	Case Reserves at End of Current Period	IBNR Reserves at End of Current Period
a. Mortgage Guaranty Coverage	0	0	0	0
b. Financial Guaranty Coverage	0	0	0	0
c. Other Lines (specify):	0	0	0	0
	0	0	0	0
	0	0	0	0
	0	0	0	0
	0	0	0	0
	0	0	0	0
	0	0	0	0
	0	0	0	0
	0	0	0	0
	0	0	0	0
	0	0	0	0
d. Total	0	0	0	0

G. Insurance-Linked Securities (ILS) Contracts

Not Applicable

H. The Amount That Could Be Realized on Life Insurance Where the Reporting Entity is Owner and Beneficiary or Has Otherwise Obtained Rights to Control the Policy

Not Applicable

22. Events Subsequent

The Company evaluated subsequent events through February 22, 2022, the date the annual statement was available to be issued.

There were no events subsequent to December 31, 2021 that would require disclosure.

The Company did not receive any assessments under the Affordable Care Act.

NOTES TO FINANCIAL STATEMENTS

23. Reinsurance

A. Unsecured Reinsurance Recoverables

Excluding amounts arising pursuant to the Intercompany Reinsurance Agreements, there are no unsecured reinsurance recoverables with an individual reinsurer which exceed 3% of policyholder's surplus.

B. Reinsurance Recoverable in Dispute

Not Applicable

C. REINSURANCE ASSUMED AND CEDED

(1) Report the maximum amount of return commission which would have been due reinsurers....

	Assumed		Ceded		Net	
	Premium Reserve (1)	Commission Equity (2)	Premium Reserve (3)	Commission Equity (4)	Premium Reserve (5)	Commission Equity (6)
a. Affiliates	\$ 0	0	0	0	0	0
b. All Other	\$ 0	0	0	0	0	0
c. TOTAL	\$ 0	0	0	0	0	0
d. Direct Unearned Premium Reserve	\$ 0					

Line (c) of Column 3 must Equal page 3, Line 9, first inside amt.

(2) Additional or return commission ... on any form of profit sharing arrangements

The Company has no contingent commissions, sliding scale, or other profit sharing commissions for direct, assumed or ceded business.

REINSURANCE

	Direct	Assumed	Ceded	Net
a. Contingent Commission	\$ 0	0	0	0
b. Sliding Scale Adjustments	\$ 0	0	0	0
c. Other Profit Commission Arrangements	\$ 0	0	0	0
d. TOTAL	\$ 0	0	0	0

D. UNCOLLECTIBLE REINSURANCE

Not Applicable

E. COMMUTATION OF CEDED REINSURANCE

Not Applicable

F. RETROACTIVE REINSURANCE

Not Applicable

G. Reinsurance Accounted for as a Deposit

The Company has not entered into any reinsurance agreements that have been accounted for as deposits as of December 31, 2021.

H. Disclosures for the Transfer of Property and Casualty Run-off Agree

The Company has not entered into any agreements which have been approved by their domiciliary regulator and have qualified pursuant to SSAP No. 62R, Property and Casualty Reinsurance to receive P&C Run-off Accounting Treatment.

I. Certified Reinsurer Rating Downgraded or Status Subject to Revocation

- b. The Company does not transact business with Certified Reinsurers.

(2) Reporting Entity's Certified Reinsurer Rating Downgraded or Status Subject to Revocation

- b. The Company is not a Certified Reinsurer.

J. Reinsurance Agreements Qualifying for Reinsurer Aggregation

Not Applicable

K. Reinsurance Credit

The Company has not entered into any agreements covering health business.

24. Retrospectively Rated Contracts & Contracts Subject to Redetermination

A. The Company does not have net accrued retrospective premiums. Refer to Note 26.

B. The Company does not have net accrued retrospective premiums. Refer to Note 26.

C. The Company does not have net accrued retrospective premiums. Refer to Note 26.

NOTES TO FINANCIAL STATEMENTS

D. Medical loss ratio rebates required pursuant to the Public Health Service Act.
Not Applicable

E.
(1) For Ten Percent (10%) Method of determining Non-admitted
Not Applicable

F.
(1) Did the reporting entity write accident and health insurance premium which is subject to the Affordable Care Act risk sharing provisions (YES/NO)?

NO

The Company did not receive any assessments under the Affordable Care Act.

25. Changes in Incurred Losses and Loss Adjustment Expenses

A. The Company has no net exposure to changes in incurred losses and loss adjustment expenses. Refer to Note 26.

26. Intercompany Pooling Arrangements

The Company is a member of the Liberty Mutual Second Amended and Restated Intercompany Reinsurance Agreement consisting of the following affiliated companies:

		NAIC Company Number	Pooling Companies	Line of Business
Lead Company:	Liberty Mutual Insurance Company ("LMIC")	23043	50.00%	All Lines
Affiliated	Peerless Insurance Company ("PIC")	24198	20.00%	All Lines
Pool Companies:	Employers Insurance Company of Wausau ("EICOW")	21458	8.00%	All Lines
	Liberty Mutual Fire Insurance Company ("LMFIC")	23035	8.00%	All Lines
	The Ohio Casualty Insurance Company ("OCIC")	24074	8.00%	All Lines
	Safeco Insurance Company of America ("SICOA")	24740	6.00%	All Lines
	American Economy Insurance Company ("AEIC")	19690	0.00%	All Lines
	America First Insurance Company ("AFIC")	12696	0.00%	All Lines
	America Fire and Casualty Company ("AFCIC")	24066	0.00%	All Lines
	America First Lloyd's Insurance Company ("AFLIC")	11526	0.00%	All Lines
	American States Insurance Company ("ASIC")	19704	0.00%	All Lines
	American States Insurance Company of Texas ("ASIC")	19712	0.00%	All Lines
	American States Lloyd's Insurance Company ("ASLC")	31933	0.00%	All Lines
	American States Preferred Insurance Company ("ASP")	37214	0.00%	All Lines
	Colorado Casualty Insurance Company ("CCIC")	41785	0.00%	All Lines
	Consolidated Insurance Company ("CIC")	22640	0.00%	All Lines
	Excelsior Insurance Company ("EIC")	11045	0.00%	All Lines
	First National Insurance Company of America ("FNICA")	24724	0.00%	All Lines
	The First Liberty Insurance Corporation ("FST")	33588	0.00%	All Lines
	General Insurance Company of America ("GICA")	24732	0.00%	All Lines
	Golden Eagle Insurance Corporation ("GEIC")	10836	0.00%	All Lines
	Hawkeye-Security Insurance Company ("HSIC")	36919	0.00%	All Lines
	Insurance Company of Illinois ("ICIL")	26700	0.00%	All Lines
	Indiana Insurance Company ("IIC")	22659	0.00%	All Lines
	Ironshore Indemnity Inc. ("III")	23647	0.00%	All Lines
	Ironshore Specialty Insurance Company ("ISIC")	25445	0.00%	All Lines
	Liberty Insurance Corporation ("LIC")	42404	0.00%	All Lines
	Liberty Insurance Underwriters, Inc. ("LIU")	19917	0.00%	All Lines
	Liberty County Mutual Insurance Company ("LCMIC")	19544	0.00%	All Lines
	LM General Insurance Company ("LMGIC")	36447	0.00%	All Lines
	Liberty Lloyd's of Texas Insurance Company ("LLOT")	11041	0.00%	All Lines
	LM Insurance Corporation ("LMC")	33600	0.00%	All Lines
	Liberty Mutual Mid-Atlantic Insurance Company ("LM")	14486	0.00%	All Lines
	Liberty Mutual Personal Insurance Company ("LMPIC")	12484	0.00%	All Lines
	Liberty Northwest Insurance Corporation ("LNW")	41939	0.00%	All Lines
	Liberty Personal Insurance Company ("LPI")	11746	0.00%	All Lines
	Liberty Surplus Insurance Corporation ("LSI")	10725	0.00%	All Lines
	Mid-American Fire & Casualty Company ("MAFCC")	23507	0.00%	All Lines
	Montgomery Mutual Insurance Company ("MMIC")	14613	0.00%	All Lines
	The Midwestern Indemnity Company ("MWIC")	23515	0.00%	All Lines
	National Insurance Association ("NIA")	27944	0.00%	All Lines
	The Netherlands Insurance Company ("NIC")	24171	0.00%	All Lines
	North Pacific Insurance Company ("NPIC")	23892	0.00%	All Lines
	Ohio Security Insurance Company ("OSIC")	24082	0.00%	All Lines

NOTES TO FINANCIAL STATEMENTS

	Oregon Automobile Insurance Company ("OAIC")	23922	0.00%	All Lines
	Peerless Indemnity Insurance Company ("PIIC")	18333	0.00%	All Lines
	Safeco Insurance Company of Illinois ("SICIL")	39012	0.00%	All Lines
	Safeco Insurance Company of Indiana ("SICIN")	11215	0.00%	All Lines
	Safeco Insurance Company of Oregon ("SICOR")	11071	0.00%	All Lines
	Safeco Lloyds Insurance Company ("SLICO")	11070	0.00%	All Lines
	Safeco National Insurance Company ("SNIC")	24759	0.00%	All Lines
	Safeco Surplus Lines Insurance Company ("SSLIC")	11100	0.00%	All Lines
	Wausau Business Insurance Company ("WBIC")	26069	0.00%	All Lines
	Wausau General Insurance Company ("WGIC")	26425	0.00%	All Lines
	Wausau Underwriters Insurance Company ("WUIC")	26042	0.00%	All Lines
100% Quota Share	West American Insurance Company ("WAIC")	44393	0.00%	All Lines
Affiliated Companies:	LM Property and Casualty Insurance Company ("LMP")	32352	0.00%	All Lines

Under the terms of the Reinsurance Agreements, the sequence of transactions is as follows:

- A. Except for WBIC, WGIC and WUIC, each Affiliated Pool Company cedes its underwriting activity to the Lead Company. WBIC, WGIC and WUIC cede 100% of its direct underwriting activity to EICOW.
- B. After recording the assumed affiliate transactions noted above, the Lead Company records 100% of its external assumed and ceded reinsurance activity.
- C. The Lead Company's remaining underwriting activity, after processing all internal and external reinsurance, is retroceded to the pool members in accordance with each company's pool participation percentage, as noted above.
- D. There were no members that are parties to reinsurance agreements with non-affiliated reinsurers covering business subject to the pooling agreement and have a contractual right of direct recovery from the non-affiliated reinsurer per the terms of such reinsurance agreements.
- E. There were no discrepancies between entries regarding pooled business on the assumed and ceded reinsurance schedules of the Lead Company and corresponding entries on the assumed and ceded reinsurance schedules of other pooled participants.
- F. The write-off of uncollectible reinsurance is pooled and the provision for reinsurance is recognized by the entity placing the outbound external reinsurance.
- G. The Company has no material amounts due (to)/from affiliated entities participating in the Liberty Mutual Second Amended and Restated Intercompany Reinsurance Agreement as of December 31, 2021.

27. Structured Settlements

- A. The Company has no net exposure to contingent liabilities from the purchase of annuities. Refer to Note 26.
- B. Not applicable.

28. Health Care Receivables

Not Applicable

29. Participating Policies

Not Applicable

30. Premium Deficiency Reserves

- 01. Liability carried for premium deficiency reserves \$

(1)
0
- 02. Date of the most recent evaluation of this liability

12/31/2021

- 03. Was anticipated investment income utilized in the calculation? Yes [] No [X] NO

31. High Deductible

Not Applicable

32. Discounting of Liabilities for Unpaid Losses or Unpaid Loss Adjustment Expenses

The Company has no net loss and loss adjustment expense reserves. Refer to Note 26.

- A. TABULAR DISCOUNT
Not Applicable

NOTES TO FINANCIAL STATEMENTS

B. NON-TABULAR DISCOUNT
Not Applicable

33. Asbestos/Environmental Reserves

A. Does the company have on the books, or has it ever written an insured for which you have identified a potential for the existence of, a liability due to asbestos losses?

The Company has no net exposure to asbestos and environmental claims. Refer to Note 26.

B. State the amount of the ending reserves for Bulk + IBNR included in A (Loss & LAE):
Not Applicable

C. State the amount of the ending reserves for loss adjustment expenses included in A (Case, Bulk + IBNR):
Not Applicable

D. Does the company have on the books, or has it ever written an insured for which you have identified a potential for the existence of, a liability due to environmental losses?

Not Applicable

E. State the amt. of the ending res. for Bulk + IBNR included in D (Loss & LAE):
Not Applicable

F. State the amt. of the ending res. for loss adj. exp. included in D (Case, Bulk + IBNR):
Not Applicable

34. Subscriber Savings Accounts

Not applicable

35. Multiple Peril Crop Insurance

Not Applicable

36. Financial Guaranty Insurance

Not Applicable

GENERAL INTERROGATORIES

PART 1 – COMMON INTERROGATORIES

GENERAL

- 1.1 Is the reporting entity a member of an Insurance Holding Company System consisting of two or more affiliated persons, one or more of which is an insurer? Yes No
- If yes, complete Schedule Y, Parts 1, 1A, 2 and 3
- 1.2 If yes, did the reporting entity register and file with its domiciliary State Insurance Commissioner, Director or Superintendent or with such regulatory official of the state of domicile of the principal insurer in the Holding Company System, a registration statement providing disclosure substantially similar to the standards adopted by the National Association of Insurance Commissioners (NAIC) in its Model Insurance Holding Company System Regulatory Act and model regulations pertaining thereto, or is the reporting entity subject to standards and disclosure requirements substantially similar to those required by such Act and regulations? Yes No N/A
- 1.3 State Regulating? Texas
- 1.4 Is the reporting entity publicly traded or a member of a publicly traded group? Yes No
- 1.5 If the response to 1.4 is yes, provide the CIK (Central Index Key) code issued by the SEC for the entity/group.
- 2.1 Has any change been made during the year of this statement in the charter, by-laws, articles of incorporation, or deed of settlement of the reporting entity? Yes No
- 2.2 If yes, date of change: _____
- 3.1 State as of what date the latest financial examination of the reporting entity was made or is being made. 12/31/2018
- 3.2 State the as of date that the latest financial examination report became available from either the state of domicile or the reporting entity. This date should be the date of the examined balance sheet and not the date the report was completed or released. 12/31/2018
- 3.3 State as of what date the latest financial examination report became available to other states or the public from either the state of domicile or the reporting entity. This is the release date or completion date of the examination report and not the date of the examination (balance sheet date). 06/30/2020
- 3.4 By what department or departments?
Texas Department of Insurance

- 3.5 Have all financial statement adjustments within the latest financial examination report been accounted for in a subsequent financial statement filed with departments? Yes No N/A
- 3.6 Have all of the recommendations within the latest financial examination report been complied with? Yes No N/A
- 4.1 During the period covered by this statement, did any agent, broker, sales representative, non-affiliated sales/service organization or any combination thereof under common control (other than salaried employees of the reporting entity) receive credit or commissions for or control a substantial part (more than 20 percent of any major line of business measured on direct premiums) of:
- 4.11 sales of new business? Yes No
- 4.12 renewals? Yes No
- 4.2 During the period covered by this statement, did any sales/service organization owned in whole or in part by the reporting entity or an affiliate, receive credit or commissions for or control a substantial part (more than 20 percent of any major line of business measured on direct premiums) of:
- 4.21 sales of new business? Yes No
- 4.22 renewals? Yes No
- 5.1 Has the reporting entity been a party to a merger or consolidation during the period covered by this statement? Yes No
- If yes, complete and file the merger history data file with the NAIC.

GENERAL INTERROGATORIES

5.2 If yes, provide the name of the entity, NAIC Company Code, and state of domicile (use two letter state abbreviation) for any entity that has ceased to exist as a result of the merger or consolidation.

1 Name of Entity	2 NAIC Company Code	3 State of Domicile

6.1 Has the reporting entity had any Certificates of Authority, licenses or registrations (including corporate registration, if applicable) suspended or revoked by any governmental entity during the reporting period? Yes [] No [X]

6.2 If yes, give full information:

.....

7.1 Does any foreign (non-United States) person or entity directly or indirectly control 10% or more of the reporting entity? Yes [] No [X]

7.2 If yes,

7.21 State the percentage of foreign control. _____ 0.00 %

7.22 State the nationality(s) of the foreign person(s) or entity(s); or if the entity is a mutual or reciprocal, the nationality of its manager or attorney-in-fact and identify the type of entity(s) (e.g., individual, corporation, government, manager or attorney-in-fact).

1 Nationality	2 Type of Entity

8.1 Is the company a subsidiary of a depository institution holding company (DIHC) or a DIHC itself, regulated by the Federal Reserve Board? Yes [] No [X]

8.2 If response to 8.1 is yes, please identify the name of the DIHC.

.....

8.3 Is the company affiliated with one or more banks, thrifts or securities firms? Yes [] No [X]

8.4 If response to 8.3 is yes, please provide the names and locations (city and state of the main office) of any affiliates regulated by a federal financial regulatory services agency [i.e. the Federal Reserve Board (FRB), the Office of the Comptroller of the Currency (OCC), the Federal Deposit Insurance Corporation (FDIC) and the Securities Exchange Commission (SEC)] and identify the affiliate's primary federal regulator.

1 Affiliate Name	2 Location (City, State)	3 FRB	4 OCC	5 FDIC	6 SEC

8.5 Is the reporting entity a depository institution holding company with significant insurance operations as defined by the Board of Governors of Federal Reserve System or a subsidiary of the reporting entity? Yes [] No [X]

8.6 If response to 8.5 is no, is the reporting entity a company or subsidiary of a company that has otherwise been made subject to the Federal Reserve Board's capital rule? Yes [] No [X] N/A []

9. What is the name and address of the independent certified public accountant or accounting firm retained to conduct the annual audit?

Ernst & Young, LLP
 200 Clarendon Street
 Boston, MA 02116

GENERAL INTERROGATORIES

10.1 Has the insurer been granted any exemptions to the prohibited non-audit services provided by the certified independent public accountant requirements as allowed in Section 7H of the Annual Financial Reporting Model Regulation (Model Audit Rule), or substantially similar state law or regulation? Yes [] No [X]

10.2 If response to 10.1 is yes, provide information related to this exemption:

10.3 Has the insurer been granted any exemptions related to the other requirements of the Annual Financial Reporting Model Regulation as allowed for in Section 18A of the Model Regulation, or substantially similar state law or regulation? Yes [] No [X]

10.4 If response to 10.3 is yes, provide information related to this exemption:

10.5 Has the reporting entity established an Audit Committee in compliance with the domiciliary state insurance laws? Yes [X] No [] N/A []

10.6 If the response to 10.5 is no or n/a, please explain.

11. What is the name, address and affiliation (officer/employee of the reporting entity or actuary/consultant associated with an actuarial consulting firm) of the individual providing the statement of actuarial opinion/certification?
 Stephanie Neyenhouse FCAS, MAAA
 175 Berkeley Street, Boston, MA 02116
 Vice President and Chief Actuary, Liberty Mutual Group Inc.

12.1 Does the reporting entity own any securities of a real estate holding company or otherwise hold real estate indirectly? Yes [] No [X]

12.11 Name of real estate holding company	
12.12 Number of parcels involved	0
12.13 Total book/adjusted carrying value	\$ 0

12.2 If yes, provide explanation:

13. FOR UNITED STATES BRANCHES OF ALIEN REPORTING ENTITIES ONLY:

13.1 What changes have been made during the year in the United States manager or the United States trustees of the reporting entity?

13.2 Does this statement contain all business transacted for the reporting entity through its United States Branch on risks wherever located? Yes [] No [X]

13.3 Have there been any changes made to any of the trust indentures during the year? Yes [] No [X]

13.4 If answer to (13.3) is yes, has the domiciliary or entry state approved the changes? Yes [] No [] N/A [X]

GENERAL INTERROGATORIES

14.1 Are the senior officers (principal executive officer, principal financial officer, principal accounting officer or controller, or persons performing similar functions) of the reporting entity subject to a code of ethics, which includes the following standards?

- a. Honest and ethical conduct, including the ethical handling of actual or apparent conflicts of interest between personal and professional relationships;
- b. Full, fair, accurate, timely and understandable disclosure in the periodic reports required to be filed by the reporting entity;
- c. Compliance with applicable governmental laws, rules, and regulations;
- d. The prompt internal reporting of violations to an appropriate person or persons identified in the code; and
- e. Accountability for adherence to the code.

Yes No

14.11 If the response to 14.1 is no, please explain:

.....

14.2 Has the code of ethics for senior managers been amended?

Yes No

14.21 If the response to 14.2 is yes, provide information related to amendment(s).

.....

14.3 Have any provisions of the code of ethics been waived for any of the specified officers?

Yes No

14.31 If the response to 14.3 is yes, provide the nature of any waiver(s).

.....

15.1 Is the reporting entity the beneficiary of a Letter of Credit that is unrelated to reinsurance where the issuing or confirming bank is not on the SVO Bank List?

Yes No

15.2 If the response to 15.1 is yes, indicate the American Bankers Association (ABA) Routing Number and the name of the issuing or confirming bank of the Letter of Credit and describe the circumstances in which the Letter of Credit is triggered.

1 American Bankers Association (ABA) Routing Number	2 Issuing or Confirming Bank Name	3 Circumstances That Can Trigger the Letter of Cred	4 Amount
0			0
0			0
0			0

BOARD OF DIRECTORS

16. Is the purchase or sale of all investments of the reporting entity passed upon either by the board of directors or a subordinate committee thereof?

Yes No

17. Does the reporting entity keep a complete permanent record of the proceedings of its board of directors and all subordinate committees thereof?

Yes No

18. Has the reporting entity an established procedure for disclosure to its board of directors or trustees of any material interest or affiliation on the part of any of its officers, directors, trustees or responsible employees that is in conflict or is likely to conflict with the official duties of such person?

Yes No

FINANCIAL

19. Has this statement been prepared using a basis of accounting other than Statutory Accounting Principles (e.g., Generally Accepted Accounting Principles)?

Yes No

GENERAL INTERROGATORIES

20.1 Total amount loaned during the year (inclusive of Separate Accounts, exclusive of policy loans):

20.11 To directors or other officers	\$ <u>0</u>
20.12 To stockholders not officers	\$ <u>0</u>
20.13 Trustees, supreme or grand (Fraternal only)	\$ <u>0</u>

20.2 Total amount of loans outstanding at the end of year (inclusive of Separate Accounts, exclusive of policy loans):

20.21 To directors or other officers	\$ <u>0</u>
20.22 To stockholders not officers	\$ <u>0</u>
20.23 Trustees, supreme or grand (Fraternal only)	\$ <u>0</u>

21.1 Were any assets reported in this statement subject to a contractual obligation to transfer to another party without the liability for such obligation being reported in the statement? Yes [] No [X]

21.2 If yes, state the amount thereof at December 31 of the current year:

21.21 Rented from others	\$ <u>0</u>
21.22 Borrowed from others	\$ <u>0</u>
21.23 Leased from others	\$ <u>0</u>
21.24 Other	\$ <u>0</u>

22.1 Does this statement include payments for assessments as described in the Annual Statement Instructions other than guaranty fund or guaranty association assessments? Yes [] No [X]

22.2 If answer is yes:

22.21 Amount paid as losses or risk adjustment	\$ <u>0</u>
22.22 Amount paid as expenses	\$ <u>0</u>
22.23 Other amounts paid	\$ <u>0</u>

23.1 Does the reporting entity report any amounts due from parent, subsidiaries or affiliates on Page 2 of this statement? Yes [] No [X]

23.2 If yes, indicate any amounts receivable from parent included in the Page 2 amount: \$ 0

24.1 Does the insurer utilize third parties to pay agent commissions in which the amounts advanced by the third parties are not settled in full within 90 days? Yes [] No [X]

24.2 If the response to 24.1 is yes, identify the third-party that pays the agents and whether they are a related party.

1 Name of Third Party	2 Is the Third-Party Agent a Related Party (Yes/No)
.....
.....

INVESTMENT

25.01 Were all the stocks, bonds and other securities owned December 31 of current year, over which the reporting entity has exclusive control, in the actual possession of the reporting entity on said date? (other than securities lending programs addressed in 25.03) Yes [X] No []

25.02 If no, give full and complete information, relating thereto:

25.03 For security lending programs, provide a description of the program including value for collateral and amount of loaned securities, and whether collateral is carried on or off-balance sheet. (an alternative is to reference Note 17 where this information is also provided)
 See note 17B

25.04 For the reporting entity's securities lending program, report amount of collateral for conforming programs as outlined in the Risk Based Capital Instructions. \$ 0

25.05 For the reporting entity's securities lending program report amount of collateral for other programs. \$ 0

GENERAL INTERROGATORIES

25.06 Does your securities lending program require 102% (domestic securities) and 105% (foreign securities) from the counterparty at the outset of the contract? Yes [] No [] N/A [X]

25.07 Does the reporting entity non-admit when the collateral received from the counterparty falls below 100%? Yes [X] No [] N/A []

25.08 Does the reporting entity or the reporting entity's securities lending agent utilize the Master Securities Lending Agreement (MSLA) to conduct securities lending? Yes [] No [] N/A [X]

25.09 For the reporting entity's security lending program, state the amount of the following as of December 31 of the current year:

25.091	Total fair value of reinvested collateral assets reported on Schedule DL, Parts 1 and 2	\$ <u> 0</u>
25.092	Total book adjusted/carrying value of reinvested collateral assets reported on Schedule DL, Parts 1 and 2	\$ <u> 0</u>
25.093	Total payable for securities lending reported on the liability page	\$ <u> 0</u>

26.1 Were any of the stocks, bonds or other assets of the reporting entity owned at December 31 of the current year not exclusively under the control of the reporting entity or has the reporting entity sold or transferred any assets subject to a put option contract that is currently in force? (Exclude securities subject to Interrogatory 21.1 and 25.03). Yes [X] No []

26.2 If yes, state the amount thereof at December 31 of the current year:

26.21	Subject to repurchase agreements	\$ <u> 0</u>
26.22	Subject to reverse repurchase agreements	\$ <u> 0</u>
26.23	Subject to dollar repurchase agreements	\$ <u> 0</u>
26.24	Subject to reverse dollar repurchase agreements	\$ <u> 0</u>
26.25	Placed under option agreements	\$ <u> 0</u>
26.26	Letter stock or securities restricted as to sale - excluding FHLB Capital Stock	\$ <u> 0</u>
26.27	FHLB Capital Stock	\$ <u> 0</u>
26.28	On deposit with states	\$ <u> 2,090,935</u>
26.29	On deposit with other regulatory bodies	\$ <u> 0</u>
26.30	Pledged as collateral - excluding collateral pledged to an FHLB	\$ <u> 0</u>
26.31	Pledged as collateral to FHLB - including assets backing funding agreements	\$ <u> 0</u>
26.32	Other	\$ <u> 0</u>

26.3 For category (26.26) provide the following:

1 Nature of Restriction	2 Description	3 Amount
.....	0
.....	0
.....	0

27.1 Does the reporting entity have any hedging transactions reported on Schedule DB? Yes [] No [X]

27.2 If yes, has a comprehensive description of the hedging program been made available to the domiciliary state? Yes [] No [] N/A [X]
If no, attach a description with this statement.

LINES 27.3 through 27.5 : FOR LIFE/FRATERNAL REPORTING ENTITIES ONLY:

27.3 Does the reporting entity utilize derivatives to hedge variable annuity guarantees subject to fluctuations as a result of interest rate sensitivity? Yes [] No []

27.4 If the response to 27.3 is YES, does the reporting entity utilize:

27.41	Special accounting provision of SSAP No. 108	Yes [] No []
27.42	Permitted accounting practice	Yes [] No []
27.43	Other accounting guidance	Yes [] No []

27.5 By responding YES to 27.41 regarding utilizing the special accounting provisions of SSAP No. 108, the reporting

GENERAL INTERROGATORIES

entity attests to the following:

Yes [] No []

- The reporting entity has obtained explicit approval from the domiciliary state.
- Hedging strategy subject to the special accounting provisions is consistent with the requirements of VM-21.
- Actuarial certification has been obtained which indicates that the hedging strategy is incorporated within the establishment of VM-21 reserves and provides the impact of the hedging strategy within the Actuarial Guideline Conditional Tail Expectation Amount.
- Financial Officer Certification has been obtained which indicates that the hedging strategy meets the definition of a Clearly Defined Hedging Strategy within VM-21 and that the Clearly Defined Hedging Strategy is the hedging strategy being used by the company in its actual day-to-day risk mitigation efforts.

28.1 Were any preferred stocks or bonds owned as of December 31 of the current year mandatorily convertible into equity, or, at the option of the issuer, convertible into equity?

Yes [] No [X]

28.2 If yes, state the amount thereof at December 31 of the current year.

\$ _____ 0

29. Excluding items in Schedule E - Part 3 - Special Deposits, real estate, mortgage loans and investments held physically in the reporting entity's offices, vaults or safety deposit boxes, were all stocks, bonds and other securities, owned throughout the current year held pursuant to a custodial agreement with a qualified bank or trust company in accordance with Section 1, III - General Examination Considerations, F. Outsourcing of Critical Functions, Custodial or Safekeeping Agreements of the NAIC Financial Condition Examiners Handbook?

Yes [X] No []

29.01 For agreements that comply with the requirements of the NAIC Financial Condition Examiners Handbook, complete the following:

1 Name of Custodian(s)	2 Custodian's Address
.....
.....

29.02 For all agreements that do not comply with the requirements of the NAIC Financial Condition Examiners Handbook, provide the name, location and a complete explanation:

1 Name(s)	2 Location(s)	3 Complete Explanation(s)
.....
.....

29.03 Have there been any changes, including name changes, in the custodian(s) identified in 29.01 during the current year?

Yes [] No [X]

29.04 If yes, give full and complete information relating thereto:

1 Old Custodian	2 New Custodian	3 Date of Change	4 Reason
.....
.....

29.05 Investment management - Identify all investment advisors, investment managers, broker/dealers, including individuals that have the authority to make investment decisions on behalf of the reporting entity. For assets that are managed internally by employees of the reporting entity, note as such. ["... that have access to the investment accounts"; "...handle securities"]

1 Name Firm or Individual	2 Affiliation
Liberty Mutual Group Asset Management Inc.	A
.....

GENERAL INTERROGATORIES

29.0597 For those firms/individuals listed in the table for Question 29.05, do any firms/individuals unaffiliated with the reporting entity (i.e., designated with a "U") manage more than 10% of the reporting entity's invested assets? Yes [] No [X]

29.0598 For firms/individuals unaffiliated with the reporting entity (i.e., designated with a "U") listed in the table for Question 29.05, does the total assets under management aggregate to more than 50% of the reporting entity's invested assets? Yes [] No [X]

29.06 For those firms or individuals listed in the table 29.05 with an affiliation code of "A" (affiliated) or "U" (unaffiliated), provide the information for the table below.

1 Name Firm or Individual	2 Central Registration Depository Number	3 Legal Entity Identifier (LEI)	4 Registered With	5 Investment Management Agreement (IMA) Filed
N/A	Liberty Mutual Group	N/A	N/A	DS

30.1 Does the reporting entity have any diversified mutual funds reported in Schedule D – Part 2 (diversified according to the Securities and Exchange Commission (SEC) in the Investment Company Act of 1940 [Section 5 (b) (1)])? Yes [] No [X]

30.2 If yes, complete the following schedule:

1 CUSIP #	2 Name of Mutual Fund	3 Book/Adjusted Carrying Value
		0
		0
		0
30.2999 TOTAL		0

30.3 For each mutual fund listed in the table above, complete the following schedule:

1 Name of Mutual Fund (from above table)	2 Name of Significant Holding of the Mutual Fund	3 Amount of Mutual Fund's Book/Adjusted Carrying Value Attributable to the Holding	4 Date of Valuation
		0	
		0	
		0	

31. Provide the following information for all short-term and long-term bonds and all preferred stocks. Do not substitute amortized value or statement value for fair value.

	1 Statement (Admitted) Value	2 Fair Value	3 Excess of Statement over Fair Value (-), or Fair Value over Statement (+)
31.1 Bonds	3,900,688	3,924,696	24,008
31.2 Preferred stocks	0	0	0
31.3 Totals	3,900,688	3,924,696	24,008

31.4 Describe the sources or methods utilized in determining the fair values:

The primary source for reported fair values is our pricing vendor, Interactive Data Corporation, followed by backfill from Reuters, Bloomberg, Barclays, Merrill Lynch, and Markit for Term Loan securities. Lastly, management determines fair value based on quoted market prices of similar financial instruments or by using industry recognized valuation techniques.

32.1 Was the rate used to calculate fair value determined by a broker or custodian for any of the securities in Schedule D? Yes [] No [X]

32.2 If the answer to 32.1 is yes, does the reporting entity have a copy of the broker's or custodian's pricing policy (hard copy or electronic copy) for all brokers or custodians used as a pricing source? Yes [] No []

GENERAL INTERROGATORIES

32.3 If the answer to 32.2 is no, describe the reporting entity's process for determining a reliable pricing source for purposes of disclosure of fair value for Schedule D:

.....

33.1 Have all the filing requirements of the Purposes and Procedures Manual of the NAIC Investment Analysis Office been followed? Yes No

33.2 If no, list exceptions:

.....

34 By self-designating 5GI securities, the reporting entity is certifying the following elements of each self-designated 5GI security:

- a. Documentation necessary to permit a full credit analysis of the security does not exist or an NAIC CRP credit rating for an FE or PL security is not available.
- b. Issuer or obligor is current on all contracted interest and principal payments.
- c. The insurer has an actual expectation of ultimate payment of all contracted interest and principal.

Has the reporting entity self-designated 5GI securities? Yes No

35 By self-designating PLGI securities, the reporting entity is certifying the following elements of each self-designated PLGI security:

- a. The security was purchased prior to January 1, 2018.
- b. The reporting entity is holding capital commensurate with the NAIC Designation reported for the security.
- c. The NAIC Designation was derived from the credit rating assigned by an NAIC CRP in its legal capacity as an NRSRO which is shown on a current private letter rating held by the insurer and available for examination by state insurance regulators.
- d. The reporting entity is not permitted to share this credit rating of the PL security with the SVO.

Has the reporting entity self-designated PLGI securities? Yes No

36. By assigning FE to a Schedule BA non-registered private fund, the reporting entity is certifying the following elements of each self-designated FE fund:

- a. The shares were purchased prior to January 1, 2019.
- b. The reporting entity is holding capital commensurate with the NAIC Designation reported for the security.
- c. The security had a public credit rating(s) with annual surveillance assigned by an NAIC CRP in its legal capacity as an NRSRO prior to January 1, 2019.
- d. The fund only or predominantly holds bonds in its portfolio.
- e. The current reported NAIC Designation was derived from the public credit rating(s) with annual surveillance assigned by an NAIC CRP in its legal capacity as an NRSRO.
- f. The public credit rating(s) with annual surveillance assigned by an NAIC CRP has not lapsed.

Has the reporting entity assigned FE to Schedule BA non-registered private funds that complied with the above criteria? Yes No

37. By rolling/renewing short-term or cash-equivalent investments with continued reporting on Schedule DA, part 1 or Schedule E Part 2 (identified through a code (%) in those investment schedules), the reporting entity is certifying to the following:

- a. The investment is a liquid asset that can be terminated by the reporting entity on the current maturity date.
- b. If the investment is with a nonrelated party or nonaffiliate, then it reflects an arms-length transaction with renewal completed at the discretion of all involved parties.
- c. If the investment is with a related party or affiliate, then the reporting entity has completed robust re-underwriting of the transaction for which documentation is available for regulator review.
- d. Short-term and cash equivalent investments that have been renewed/rolled from the prior period that do not meet the criteria in 37.a - 37.c are reported as long-term investments.

Has the reporting entity rolled/renewed short-term or cash equivalent investments in accordance with these criteria? Yes No N/A

OTHER

38.1 Amount of payments to trade associations, service organizations and statistical or Rating Bureaus, if any? \$ _____ 0

38.2 List the name of the organization and the amount paid if any such payment represented 25% or more of the total payments to trade associations, service organizations and statistical or rating bureaus during the period covered by this statement.

1 Name	2 Amount Paid
.....	\$ 0
.....	\$ 0
.....	\$ 0

GENERAL INTERROGATORIES

39.1 Amount of payments for legal expenses, if any?

\$ _____ 0

39.2 List the name of the firm and the amount paid if any such payment represented 25% or more of the total payments for legal expenses during the period covered by this statement.

1 Name	2 Amount Paid
.....	\$ 0
.....	\$ 0
.....	\$ 0

40.1 Amount of payments for expenditures in connection with matters before legislative bodies, officers or departments of government, if any?

\$ _____ 0

40.2 List the name of the firm and the amount paid if any such payment represented 25% or more of the total payment expenditures in connection with matters before legislative bodies, officers or departments of government during the period covered by this statement.

1 Name	2 Amount Paid
.....	\$ 0
.....	\$ 0
.....	\$ 0

GENERAL INTERROGATORIES

PART 2 – PROPERTY & CASUALTY INTERROGATORIES

1.1 Does the reporting entity have any direct Medicare Supplement Insurance in force? Yes [] No [X]

1.2 If yes, indicate premium earned on U.S. business only. \$ 0

1.3 What portion of Item (1.2) is not reported on the Medicare Supplement Insurance Experience Exhibit? \$ 0

1.31 Reason for excluding

.....

.....

.....

1.4 Indicate amount of earned premium attributable to Canadian and/or Other Alien not included in Item (1.2) above. \$ 0

1.5 Indicate total incurred claims on all Medicare Supplement insurance. \$ 0

1.6 Individual policies:

Most current three years:

1.61 Total premium earned \$ 0

1.62 Total incurred claims \$ 0

1.63 Number of covered lives 0

All years prior to most current three years:

1.64 Total premium earned \$ 0

1.65 Total incurred claims \$ 0

1.66 Number of covered lives 0

1.7 Group policies:

Most current three years:

1.71 Total premium earned \$ 0

1.72 Total incurred claims \$ 0

1.73 Number of covered lives 0

All years prior to most current three years:

1.74 Total premium earned \$ 0

1.75 Total incurred claims \$ 0

1.76 Number of covered lives 0

2. Health Test:

	1		2	
	Current Year		Prior Year	
2.1 Premium Numerator	\$ <u> 0</u>		\$ <u> 0</u>	
2.2 Premium Denominator	\$ <u> 0</u>		\$ <u> 0</u>	
2.3 Premium Ratio (2.1 / 2.2)	<u> 0.00</u>		<u> 0.00</u>	
2.4 Reserve Numerator	\$ <u> 0</u>		\$ <u> 0</u>	
2.5 Reserve Denominator	\$ <u> 0</u>		\$ <u> 0</u>	
2.6 Reserve Ratio (2.4 / 2.5)	<u> 0.00</u>		<u> 0.00</u>	

3.1 Did the reporting entity issue participating policies during the calendar year? Yes [] No [X]

3.2 If yes, provide the amount of premium written for participating and/or non-participating policies during the calendar year

3.21 Participating policies \$ 0

3.22 Non-participating policies \$ (8,432)

4. For Mutual reporting entities and Reciprocal Exchanges only:

4.1 Does the reporting entity issue assessable policies? Yes [] No [X]

4.2 Does the reporting entity issue non-assessable policies? Yes [] No [X]

4.3 If assessable policies are issued, what is the extent of the contingent liability of the policyholders? 0 %

4.4 Total amount of assessments paid or ordered to be paid during the year on deposit notes or contingent premiums. \$ 0

5. For Reciprocal Exchanges Only:

5.1 Does the exchange appoint local agents? Yes [] No [X]

5.2 If yes, is the commission paid:

5.21 Out of Attorney's-in-fact compensation Yes [] No [] N/A [X]

5.22 As a direct expense of the exchange Yes [] No [] N/A [X]

5.3 What expenses of the Exchange are not paid out of the compensation of the Attorney-in-fact?

.....

.....

.....

5.4 Has any Attorney-in-fact compensation, contingent on fulfillment of certain conditions, been deferred? Yes [] No []

5.5 If yes, give full information

.....

.....

.....

6.1 What provision has this reporting entity made to protect itself from an excessive loss in the event of a catastrophe under a workers' compensation contract issued without limit loss:
see Note 21C1

.....

.....

.....

GENERAL INTERROGATORIES

PART 2 – PROPERTY & CASUALTY INTERROGATORIES

- 6.2 Describe the method used to estimate this reporting entity's probable maximum insurance loss, and identify the type of insured exposures comprising that probable maximum loss, the locations of concentrations of those exposures and the external resources (such as consulting firms or computer software models), if any, used in the estimation process:
see Note 21C1
- 6.3 What provision has this reporting entity made (such as a catastrophic reinsurance program) to protect itself from an excessive loss arising from the types and concentrations of insured exposures comprising its probable maximum property insurance loss?
see Note 21C1
- 6.4 Does the reporting entity carry catastrophe reinsurance protection for at least one reinstatement, in an amount sufficient to cover its estimated probable maximum loss attributable to a single loss event or occurrence? Yes [] No [X]
- 6.5 If no, describe any arrangements or mechanisms employed by the reporting entity to supplement its catastrophe reinsurance program or to hedge its exposure to unreinsured catastrophic loss
The Company cedes 100% of its business to Liberty Mutual Insurance Company, the lead company in the Liberty Mutual Pool. Liberty Mutual Insurance Company purchases external catastrophe reinsurance coverage.
- 7.1 Has the reporting entity reinsured any risk with any other entity under a quota share reinsurance contract that includes a provision that would limit the reinsurer's losses below the stated quota share percentage (e.g., a deductible, a loss ratio corridor, a loss cap, an aggregate limit or any similar provisions)? Yes [] No [X]
- 7.2 If yes, indicate the number of reinsurance contracts containing such provisions. _____ 0
- 7.3 If yes, does the amount of reinsurance credit taken reflect the reduction in quota share coverage caused by any applicable limiting provision(s)? Yes [] No []
- 8.1 Has this reporting entity reinsured any risk with any other entity and agreed to release such entity from liability, in whole or in part, from any loss that may occur on this risk, or portion thereof, reinsured? Yes [] No [X]
- 8.2 If yes, give full information
- 9.1 Has the reporting entity ceded any risk under any reinsurance contract (or under multiple contracts with the same reinsurer or its affiliates) for which during the period covered by the statement: (i) it recorded a positive or negative underwriting result greater than 5% of prior year-end surplus as regards policyholders or it reported calendar year written premium ceded or year-end loss and loss expense reserves ceded greater than 5% of prior year-end surplus as regards policyholders; (ii) it accounted for that contract as reinsurance and not as a deposit; and (iii) the contract(s) contain one or more of the following features or other features that would have similar results:
(a) A contract term longer than two years and the contract is noncancellable by the reporting entity during the contract term;
(b) A limited or conditional cancellation provision under which cancellation triggers an obligation by the reporting entity, or an affiliate of the reporting entity, to enter into a new reinsurance contract with the reinsurer, or an affiliate of the reinsurer;
(c) Aggregate stop loss reinsurance coverage;
(d) A unilateral right by either party (or both parties) to commute the reinsurance contract, whether conditional or not, except for such provisions which are only triggered by a decline in the credit status of the other party;
(e) A provision permitting reporting of losses, or payment of losses, less frequently than on a quarterly basis (unless there is no activity during the period); or
(f) Payment schedule, accumulating retentions from multiple years or any features inherently designed to delay timing of the reimbursement to the ceding entity. Yes [] No [X]
- 9.2 Has the reporting entity during the period covered by the statement ceded any risk under any reinsurance contract (or under multiple contracts with the same reinsurer or its affiliates), for which, during the period covered by the statement, it recorded a positive or negative underwriting result greater than 5% of prior year-end surplus as regards policyholders or it reported calendar year written premium ceded or year-end loss and loss expense reserves ceded greater than 5% of prior year-end surplus as regards policyholders; excluding cessions to approved pooling arrangements or to captive insurance companies that are directly or indirectly controlling, controlled by, or under common control with (i) one or more unaffiliated policyholders of the reporting entity, or (ii) an association of which one or more unaffiliated policyholders of the reporting entity is a member where:
(a) The written premium ceded to the reinsurer by the reporting entity or its affiliates represents fifty percent (50%) or more of the entire direct and assumed premium written by the reinsurer based on its most recently available financial statement; or
(b) Twenty-five percent (25%) or more of the written premium ceded to the reinsurer has been retroceded back to the reporting entity or its affiliates in a separate reinsurance contract. Yes [] No [X]
- 9.3 If yes to 9.1 or 9.2, please provide the following information in the Reinsurance Summary Supplemental Filing for General Interrogatory 9:
(a) The aggregate financial statement impact gross of all such ceded reinsurance contracts on the balance sheet and statement of income;
(b) A summary of the reinsurance contract terms and indicate whether it applies to the contracts meeting the criteria in 9.1 or 9.2; and
(c) A brief discussion of management's principle objectives in entering into the reinsurance contract including the economic purpose to be achieved.
- 9.4 Except for transactions meeting the requirements of paragraph 37 of SSAP No. 62R, Property and Casualty Reinsurance, has the reporting entity ceded any risk under any reinsurance contract (or multiple contracts with the same reinsurer or its affiliates) during the period covered by the financial statement, and either:
(a) Accounted for that contract as reinsurance (either prospective or retroactive) under statutory accounting principles ("SAP") and as a deposit under generally accepted accounting principles ("GAAP"); or
(b) Accounted for that contract as reinsurance under GAAP and as a deposit under SAP? Yes [] No [X]
- 9.5 If yes to 9.4, explain in the Reinsurance Summary Supplemental Filing for General Interrogatory 9 (Section D) why the contract(s) is treated differently for GAAP and SAP.
- 9.6 The reporting entity is exempt from the Reinsurance Attestation Supplement under one or more of the following criteria:
(a) The entity does not utilize reinsurance; or, Yes [] No [X]
(b) The entity only engages in a 100% quota share contract with an affiliate and the affiliated or lead company has filed an attestation supplement; or Yes [] No [X]
(c) The entity has no external cessions and only participates in an intercompany pool and the affiliated or lead company has filed an attestation supplement. Yes [X] No []

GENERAL INTERROGATORIES

PART 2 – PROPERTY & CASUALTY INTERROGATORIES

10. If the reporting entity has assumed risks from another entity, there should be charged on account of such reinsurances a reserve equal to that which the original entity would have been required to charge had it retained the risks. Has this been done? Yes [] No [] N/A [X]
- 11.1 Has the reporting entity guaranteed policies issued by any other entity and now in force: Yes [] No [X]
- 11.2 If yes, give full information

- 12.1 If the reporting entity recorded accrued retrospective premiums on insurance contracts on Line 15.3 of the asset schedule, Page 2, state the amount of corresponding liabilities recorded for:
- | | | | |
|---|--|----|---|
| 12.11 Unpaid losses | | \$ | 0 |
| 12.12 Unpaid underwriting expenses (including loss adjustment expenses) | | \$ | 0 |
- 12.2 Of the amount on Line 15.3, Page 2, state the amount that is secured by letters of credit, collateral and other funds? \$ _____ 0
- 12.3 If the reporting entity underwrites commercial insurance risks, such as workers' compensation, are premium notes or promissory notes accepted from its insureds covering unpaid premiums and/or unpaid losses? Yes [] No [X] N/A []
- 12.4 If yes, provide the range of interest rates charged under such notes during the period covered by this statement:
- | | | | |
|------------|--|--|--------|
| 12.41 From | | | 0.00 % |
| 12.42 To | | | 0.00 % |
- 12.5 Are letters of credit or collateral and other funds received from insureds being utilized by the reporting entity to secure premium notes or promissory notes taken by a reporting entity or to secure any of the reporting entity's reported direct unpaid loss reserves, including unpaid losses under loss deductible features of commercial policies? Yes [] No [X]
- 12.6 If yes, state the amount thereof at December 31 of current year:
- | | | | |
|----------------------------------|--|----|---|
| 12.61 Letters of Credit | | \$ | 0 |
| 12.62 Collateral and other funds | | \$ | 0 |
- 13.1 Largest net aggregate amount insured in any one risk (excluding workers' compensation): \$ _____ 0
- 13.2 Does any reinsurance contract considered in the calculation of this amount include an aggregate limit of recovery without also including a reinstatement provision? Yes [X] No []
- 13.3 State the number of reinsurance contracts (excluding individual facultative risk certificates, but including facultative programs, automatic facilities or facultative obligatory contracts) considered in the calculation of the amount. _____ 1
- 14.1 Is the company a cedant in a multiple cedant reinsurance contract? Yes [X] No []
- 14.2 If yes, please describe the method of allocating and recording reinsurance among the cedants:
 Premiums and recoverables were allocated pursuant to allocation agreements, including the intercompany pooling agreement.

- 14.3 If the answer to 14.1 is yes, are the methods described in item 14.2 entirely contained in the respective multiple cedant reinsurance contracts? Yes [] No [X]
- 14.4 If the answer to 14.3 is no, are all the methods described in 14.2 entirely contained in written agreements? Yes [X] No []
- 14.5 If the answer to 14.4 is no, please explain:
 N/A

- 15.1 Has the reporting entity guaranteed any financed premium accounts? Yes [] No [X]
- 15.2 If yes, give full information

- 16.1 Does the reporting entity write any warranty business? Yes [] No [X]
 If yes, disclose the following information for each of the following types of warranty coverage:

		1		2		3		4		5
		Direct Losses Incurred		Direct Losses Unpaid		Direct Written Premium		Direct Premium Unearned		Direct Premium Earned
16.11	Home	\$ 0		\$ 0		\$ 0		\$ 0		\$ 0
16.12	Products	\$ 0		\$ 0		\$ 0		\$ 0		\$ 0
16.13	Automobile	\$ 0		\$ 0		\$ 0		\$ 0		\$ 0
16.14	Other*	\$ 0		\$ 0		\$ 0		\$ 0		\$ 0

* Disclose type of coverage: _____

GENERAL INTERROGATORIES

PART 2 – PROPERTY & CASUALTY INTERROGATORIES

17.1 Does the reporting entity include amounts recoverable on unauthorized reinsurance in Schedule F – Part 3 that is exempt from the statutory provision for unauthorized reinsurance?

Yes [] No [X]

Incurred but not reported losses on contracts in force prior to July 1, 1984, and not subsequently renewed are exempt from the statutory provision for unauthorized reinsurance. Provide the following information for this exemption:

17.11 Gross amount of unauthorized reinsurance in Schedule F – Part 3 exempt from the statutory provision for unauthorized reinsurance	\$ <u>0</u>
17.12 Unfunded portion of Interrogatory 17.11	\$ <u>0</u>
17.13 Paid losses and loss adjustment expenses portion of Interrogatory 17.11	\$ <u>0</u>
17.14 Case reserves portion of Interrogatory 17.11	\$ <u>0</u>
17.15 Incurred but not reported portion of Interrogatory 17.11	\$ <u>0</u>
17.16 Unearned premium portion of Interrogatory 17.11	\$ <u>0</u>
17.17 Contingent commission portion of Interrogatory 17.11	\$ <u>0</u>

18.1 Do you act as a custodian for health savings accounts?

Yes [] No [X]

18.2 If yes, please provide the amount of custodial funds held as of the reporting date.

\$ 0

18.3 Do you act as an administrator for health savings accounts?

Yes [] No [X]

18.4 If yes, please provide the balance of the funds administered as of the reporting date.

\$ 0

19. Is the reporting entity licensed or chartered, registered, qualified, eligible or writing business in at least two states?

Yes [] No [X]

19.1 If no, does the reporting entity assume reinsurance business that covers risks residing in at least one state other than the state of domicile of the reporting entity?

Yes [] No [X] N/A []

FIVE – YEAR HISTORICAL DATA

Show amounts in whole dollars only, no cents; show percentages to one decimal place, i.e., 17.6.

	1	2	3	4	5
	2021	2020	2019	2018	2017
Gross Premiums Written (Page 8, Part 1B, Cols. 1, 2 & 3)					
1. Liability lines (Lines 11.1, 11.2, 16, 17.1, 17.2, 17.3, 18.1, 18.2, 19.1, 19.2 & 19.3, 19.4)					
2. Property lines (Lines 1, 2, 9, 12, 21 & 26)	(8,765)	474,076	543,371	526,772	504,654
3. Property and liability combined lines (Lines 3, 4, 5, 8, 22 & 27)	333	347,707	539,331	793,592	959,513
4. All other lines (Lines 6, 10, 13, 14, 15, 23, 24, 28, 29, 30 & 34)					
5. Nonproportional reinsurance lines (Lines 31, 32 & 33)					
6. Total (Line 35)	(8,432)	821,783	1,082,702	1,320,364	1,464,167
Net Premiums Written (Page 8, Part 1B, Col. 6)					
7. Liability lines (Lines 11.1, 11.2, 16, 17.1, 17.2, 17.3, 18.1, 18.2, 19.1, 19.2 & 19.3, 19.4)					
8. Property lines (Lines 1, 2, 9, 12, 21 & 26)					
9. Property and liability combined lines (Lines 3, 4, 5, 8, 22 & 27)					
10. All other lines (Lines 6, 10, 13, 14, 15, 23, 24, 28, 29, 30 & 34)					
11. Nonproportional reinsurance lines (Lines 31, 32 & 33)					
12. Total (Line 35)					
Statement of Income (Page 4)					
13. Net underwriting gain (loss) (Line 8)					
14. Net investment gain (loss) (Line 11)	73,316	69,733	94,102	84,881	80,739
15. Total other income (Line 15)					2
16. Dividends to policyholders (Line 17)					
17. Federal and foreign income taxes incurred (Line 19)	12,270	13,000	20,599	18,372	26,119
18. Net income (Line 20)	61,046	56,733	73,503	66,509	54,622
Balance Sheet Lines (Pages 2 and 3)					
19. Total admitted assets excluding protected cell business (Page 2, Line 26, Col. 3)	3,942,579	3,878,361	3,826,092	3,747,151	3,687,461
20. Premiums and considerations (Page 2, Col. 3)					
20.1 In course of collection (Line 15.1)					
20.2 Deferred and not yet due (Line 15.2)					
20.3 Accrued retrospective premiums (Line 15.3)					
21. Total liabilities excluding protected cell business (Page 3, Line 26)	11,837	6,665	10,128	6,691	13,509
22. Losses (Page 3, Line 1)					
23. Loss adjustment expenses (Page 3, Line 3)					
24. Unearned premiums (Page 3, Line 9)					
25. Capital paid up (Page 3, Lines 30 & 31)					
26. Surplus as regards policyholders (Page 3, Line 37)	3,930,742	3,871,696	3,815,964	3,740,461	3,673,952
Cash Flow (Page 5)					
27. Net cash from operations (Line 11)	52,356	49,675	76,865	61,188	68,662
Risk-Based Capital Analysis					
28. Total adjusted capital	3,930,742	3,871,697	3,815,964	3,740,461	3,673,952
29. Authorized control level risk-based capital	10,861	10,850	10,967	10,950	10,769
Percentage Distribution of Cash, Cash Equivalents and Invested Assets (Page 2, Col. 3) (Item divided by Page 2, Line 12, Col. 3) x 100.0					
30. Bonds (Line 1)	99.3	99.3	96.1	99.1	95.9
31. Stocks (Lines 2.1 & 2.2)					
32. Mortgage loans on real estate (Lines 3.1 and 3.2)					
33. Real estate (Lines 4.1, 4.2 & 4.3)					
34. Cash, cash equivalents and short-term investments (Line 5)	0.7	0.7	3.9	0.9	4.1
35. Contract loans (Line 6)					
36. Derivatives (Line 7)					
37. Other invested assets (Line 8)					
38. Receivables for securities (Line 9)					
39. Securities lending reinvested collateral assets (Line 10)					
40. Aggregate write-ins for invested assets (Line 11)					
41. Cash, cash equivalents and invested assets (Line 12)	100.0	100.0	100.0	100.0	100.0
Investments in Parent, Subsidiaries and Affiliates					
42. Affiliated bonds, (Sch. D, Summary, Line 12, Col. 1)					
43. Affiliated preferred stocks (Sch. D, Summary, Line 18, Col. 1)					
44. Affiliated common stocks (Sch. D, Summary, Line 24, Col. 1)					
45. Affiliated short-term investments (subtotals included in Schedule DA Verification, Col. 5, Line 10)					
46. Affiliated mortgage loans on real estate					
47. All other affiliated					
48. Total of above Lines 42 to 47					
49. Total investment in parent included in Lines 42 to 47 above					
50. Percentage of investments in parent, subsidiaries and affiliates to surplus as regards policyholders (Line 48 above divided by Page 3, Col. 1, Line 37 x 100.0)					

FIVE – YEAR HISTORICAL DATA (Continued)

	1	2	3	4	5
	2021	2020	2019	2018	2017
Capital and Surplus Accounts (Page 4)					
51. Net unrealized capital gains (losses) (Line 24)					
52. Dividends to stockholders (Line 35)					
53. Change in surplus as regards policyholders for the year (Line 38)	59,046	55,733	75,503	66,509	54,622
Gross Losses Paid (Page 9, Part 2, Cols. 1 & 2)					
54. Liability lines (Lines 11.1, 11.2, 16, 17.1, 17.2, 17.3, 18.1, 18.2, 19.1, 19.2 & 19.3, 19.4)					
55. Property lines (Lines 1, 2, 9, 12, 21 & 26)	144,557	214,332	148,561	329,140	152,982
56. Property and liability combined lines (Lines 3, 4, 5, 8, 22 & 27)	1,070,835	1,072,357	291,034	482,051	488,835
57. All other lines (Lines 6, 10, 13, 14, 15, 23, 24, 28, 29, 30 & 34)					
58. Nonproportional reinsurance lines (Lines 31, 32 & 33)					
59. Total (Line 35)	1,215,392	1,286,689	439,595	811,191	641,817
Net Losses Paid (Page 9, Part 2, Col. 4)					
60. Liability lines (Lines 11.1, 11.2, 16, 17.1, 17.2, 17.3, 18.1, 18.2, 19.1, 19.2 & 19.3, 19.4)					
61. Property lines (Lines 1, 2, 9, 12, 21 & 26)					
62. Property and liability combined lines (Lines 3, 4, 5, 8, 22 & 27)					
63. All other lines (Lines 6, 10, 13, 14, 15, 23, 24, 28, 29, 30 & 34)					
64. Nonproportional reinsurance lines (Lines 31, 32 & 33)					
65. Total (Line 35)					
Operating Percentages (Page 4) (Item divided by Page 4, Line 1) x 100.0					
66. Premiums earned (Line 1)	100.0	100.0	100.0	100.0	100.0
67. Losses incurred (Line 2)					
68. Loss expenses incurred (Line 3)					
69. Other underwriting expenses incurred (Line 4)					
70. Net underwriting gain (loss) (Line 8)					
Other Percentages					
71. Other underwriting expenses to net premiums written (Page 4, Lines 4 + 5 - 15 divided by Page 8, Part 1B, Col. 6, Line 35 x 100.0)					
72. Losses and loss expenses incurred to premiums earned (Page 4, Lines 2 + 3 divided by Page 4, Line 1 x 100.0)					
73. Net premiums written to policyholders' surplus (Page 8, Part 1B, Col. 6, Line 35 divided by Page 3, Line 37, Col. 1 x 100.0)					
One Year Loss Development (\$000 omitted)					
74. Development in estimated losses and loss expenses incurred prior to current year (Schedule P, Part 2-Summary, Line 12, Col. 11)					
75. Percent of development of losses and loss expenses incurred to policyholders' surplus of prior year end (Line 74 above divided by Page 4, Line 21, Col. 1 x 100.0)					
Two Year Loss Development (\$000 omitted)					
76. Development in estimated losses and loss expenses incurred 2 years before the current year and prior year (Schedule P, Part 2-Summary, Line 12, Col. 12)					
77. Percent of development of losses and loss expenses incurred to reported policyholders' surplus of second prior year end (Line 76 above divided by Page 4, Line 21, Col. 2 x 100.0)					

NOTE: If a party to a merger, have the two most recent years of this exhibit been restated due to a merger in compliance with the disclosure requirements of SSAP No. 3, Accounting Changes and Correction of Errors?

Yes [] No []

If no, please explain:

.....

NONE **Schedule P - Part 1 - Summary**

NONE **Schedule P - Part 2, 3, 4 - Summary**

SCHEDULE T - EXHIBIT OF PREMIUMS WRITTEN Allocated By States and Territories

States, Etc.	1	Gross Premiums, Including Policy and Membership Fees Less Return Premiums and Premiums on Policies Not Taken		4	5	6	7	8	9
		Active Status (a)	2						
		Direct Premiums Written	Direct Premiums Earned	Dividends Paid or Credited to Policyholders on Direct Business	Direct Losses Paid (Deducting Salvage)	Direct Losses Incurred	Direct Losses Unpaid	Finance and Service Charges Not Included in Premiums	Direct Premium Written for Federal Purchasing Groups (Included in Col. 2)
1. Alabama	AL	N							
2. Alaska	AK	N							
3. Arizona	AZ	N							
4. Arkansas	AR	N							
5. California	CA	N							
6. Colorado	CO	N							
7. Connecticut	CT	N							
8. Delaware	DE	N							
9. District of Columbia	DC	N							
10. Florida	FL	N							
11. Georgia	GA	N							
12. Hawaii	HI	N							
13. Idaho	ID	N							
14. Illinois	IL	N							
15. Indiana	IN	N							
16. Iowa	IA	N							
17. Kansas	KS	N							
18. Kentucky	KY	N							
19. Louisiana	LA	N							
20. Maine	ME	N							
21. Maryland	MD	N							
22. Massachusetts	MA	N							
23. Michigan	MI	N							
24. Minnesota	MN	N							
25. Mississippi	MS	N							
26. Missouri	MO	N							
27. Montana	MT	N							
28. Nebraska	NE	N							
29. Nevada	NV	N							
30. New Hampshire	NH	N							
31. New Jersey	NJ	N							
32. New Mexico	NM	N							
33. New York	NY	N							
34. North Carolina	NC	N							
35. North Dakota	ND	N							
36. Ohio	OH	N							
37. Oklahoma	OK	N							
38. Oregon	OR	N							
39. Pennsylvania	PA	N							
40. Rhode Island	RI	N							
41. South Carolina	SC	N							
42. South Dakota	SD	N							
43. Tennessee	TN	N							
44. Texas	TX	L	(8,432)	305,870	1,215,392	275,973	(62,812)		
45. Utah	UT	N							
46. Vermont	VT	N							
47. Virginia	VA	N							
48. Washington	WA	N							
49. West Virginia	WV	N							
50. Wisconsin	WI	N							
51. Wyoming	WY	N							
52. American Samoa	AS	N							
53. Guam	GU	N							
54. Puerto Rico	PR	N							
55. U.S. Virgin Islands	VI	N							
56. Northern Mariana Islands	MP	N							
57. Canada	CAN	N							
58. Aggregate Other Alien	OT	X X X							
59. Totals	(a) 1	(8,432)	305,870		1,215,392	275,973	(62,812)		

DETAILS OF WRITE-INS									
58001.		X X X							
58002.		X X X							
58003.		X X X							
58998.	Summary of remaining write-ins for Line 58 from overflow page	X X X							
58999.	Totals (Lines 58001 through 58003 plus 58998) (Line 58 above)	X X X							

Explanation of basis of allocation of premiums by states, etc.

(a) Active Status Counts

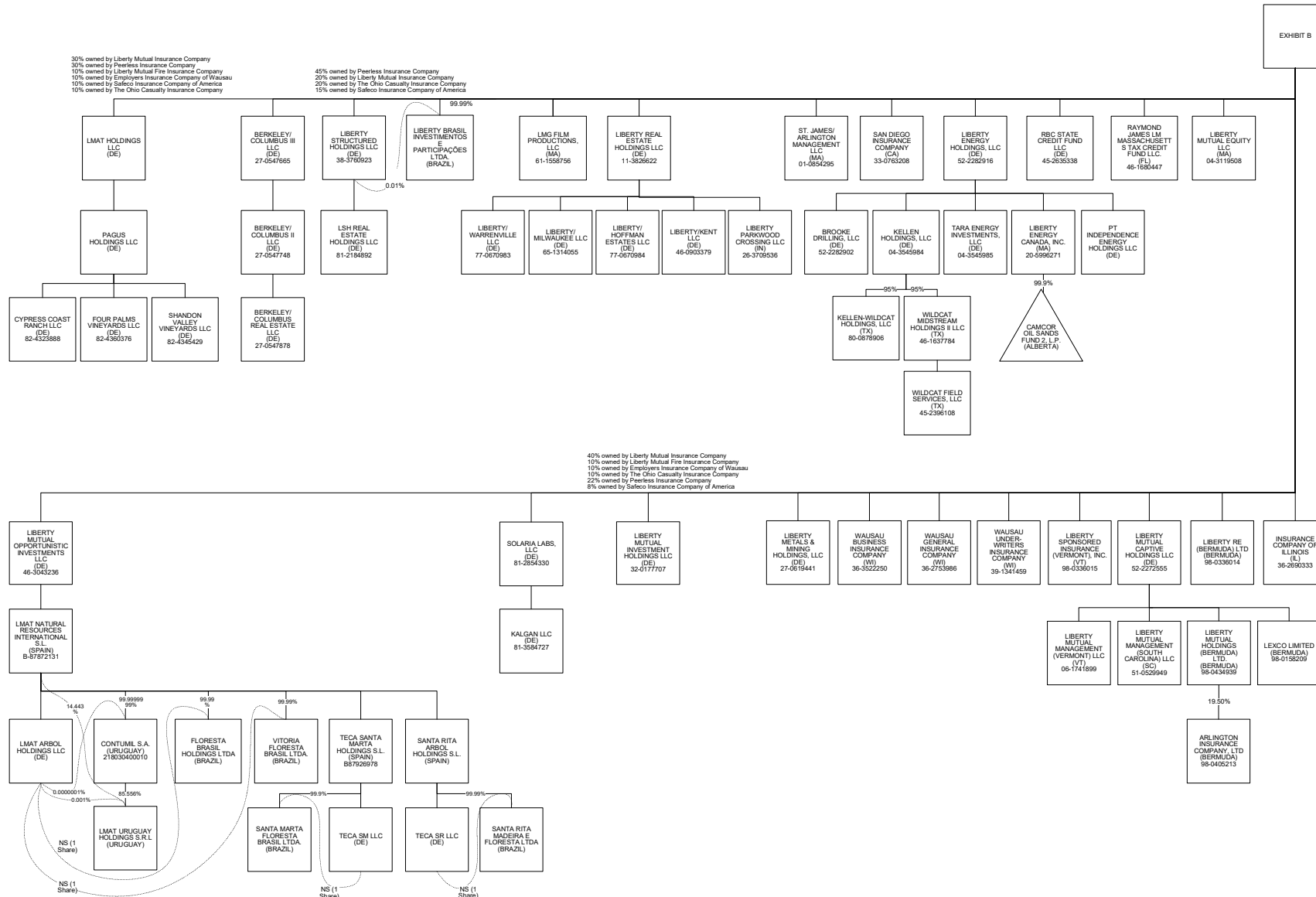
L - Licensed or Chartered - Licensed insurance carrier or domiciled RRG	1
E - Eligible - Reporting entities eligible or approved to write surplus lines in the state	_____
D - Domestic Surplus Lines Insurer (DSL) - Reporting entities authorized to write surplus lines in the state of domicile	_____
R - Registered - Non-domiciled RRGs	_____
Q - Qualified - Qualified or accredited reinsurer	_____
N - None of the above - Not allowed to write business in the state (other than their state of domicile - See DSLI)	56

Explanation of basis of allocation of premiums by states, etc.

*Location of coverage - Fire, Allied Lines, Homeowners Multi Peril, Commercial Multi Peril, Earthquake, Boiler and Machinery	*Location of Court or Obligee - Surety
*States employee's main work place - Worker's Compensation	*Address of Assured - Other Accident and Health
*Location of Principal place of garaging of each individual car - Auto Liability, Auto Physical Damage	*Location of Properties covered - Burglary and Theft
*Principal Location of business or location of coverage - Liability other than Auto, Fidelity, Warranty	*Principal Location of Assured - Ocean Marine, Credit
*Point of origin of shipment or principal location of assured - Inland Marine	*Primary residence of Assured- Aircraft (all perils)
*State in which employees regularly work - Group Accident and Health	

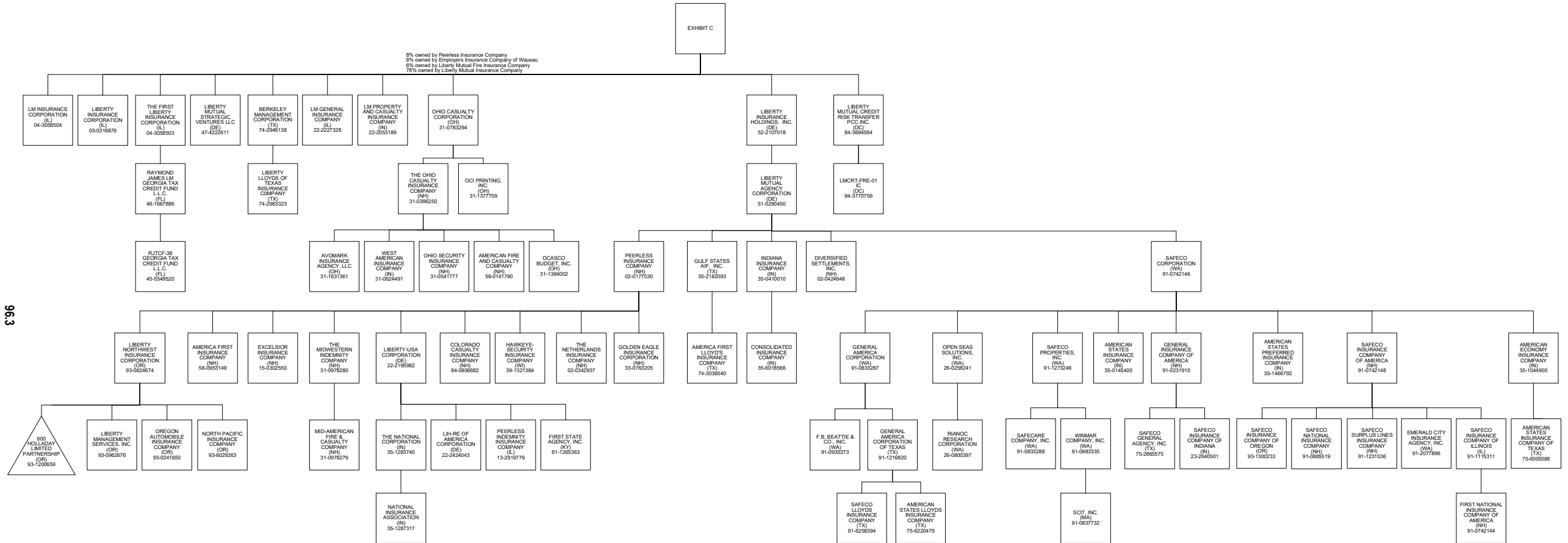
SCHEDULE Y - INFORMATION CONCERNING ACTIVITIES OF INSURER MEMBERS OF A HOLDING COMPANY GROUP

PART 1 - ORGANIZATIONAL CHART



SCHEDULE Y - INFORMATION CONCERNING ACTIVITIES OF INSURER MEMBERS OF A HOLDING COMPANY GROUP

PART 1 - ORGANIZATIONAL CHART



OVERFLOW PAGE FOR WRITE-INS
