

**ANNUAL STATEMENT**

**OF THE**

**AMERICAN STATES PREFERRED INSURANCE COMPANY**

---

---

---

---

**of** **INDIANAPOLIS**

**in the state of** **INDIANA**

**TO THE**

**Insurance Department**

**OF THE**

**FOR THE YEAR ENDED**

**December 31, 2013**

**PROPERTY AND CASUALTY**

**2013**



37214201320100100

# ANNUAL STATEMENT

For the Year Ended December 31, 2013  
OF THE CONDITION AND AFFAIRS OF THE

## American States Preferred Insurance Company

**NAIC Group Code** 0111 0111 **NAIC Company Code** 37214 **Employer's ID Number** 35-1466792  
(Current Period) (Prior Period)

**Organized under the Laws of** Indiana, **State of Domicile or Port of Entry** Indiana  
**Country of Domicile** United States of America

**Incorporated/Organized** July 26, 1979 **Commenced Business** September 26, 1979

**Statutory Home Office** 350 East 96th Street, Indianapolis, IN, US 46240  
(Street and Number) (City or Town, State, Country and Zip Code)

**Main Administrative Office** 175 Berkeley Street  
(Street and Number)  
Boston, MA, US 02116 617-357-9500  
(City or Town, State, Country and Zip Code) (Area Code) (Telephone Number)

**Mail Address** 175 Berkeley Street, Boston, MA, US 02116  
(Street and Number or P.O. Box) (City or Town, State, Country and Zip Code)

**Primary Location of Books and Records** 175 Berkeley Street Boston, MA, US 02116 617-357-9500  
(Street and Number) (City or Town, State, Country and Zip Code) (Area Code) (Telephone Number)

**Internet Web Site Address** \_\_\_\_\_

**Statutory Statement Contact** James Deegan 617-357-9500 x45424  
(Name) (Area Code) (Telephone Number) (Extension)  
Statutory.Compliance@LibertyMutual.com 617-574-5955  
(E-Mail Address) (Fax Number)

### OFFICERS

**Chairman of the Board**  
Timothy Michael Sweeney

Name	Title
1. Timothy Michael Sweeney	President and Chief Executive Officer
2. Dexter Robert Legg	Vice President and Secretary
3. Laurance Henry Soyer Yahia	Vice President and Treasurer

### VICE-PRESIDENTS

Name	Title	Name	Title
Margaret Dillon	Vice President and Chief Financial Officer	John Derek Doyle	Vice President and Comptroller
Anthony Alexander Fontanes	Vice President and Chief Investment Officer	Elizabeth Julia Morahan	Vice President and General Counsel

### DIRECTORS OR TRUSTEES

Margaret Dillon	John Derek Doyle	Paul Ivanovskis	Kevin John Kirschner
Dexter Robert Legg	James Michael MacPhee #	Elizabeth Julia Morahan	Timothy Michael Sweeney

State of Massachusetts

County of Suffolk ss

The officers of this reporting entity being duly sworn, each depose and say that they are the described officers of said reporting entity, and that on the reporting period stated above, all of the herein described assets were the absolute property of the said reporting entity, free and clear from any liens or claims thereon, except as herein stated, and that this statement, together with related exhibits, schedules and explanations therein contained, annexed or referred to, is a full and true statement of all the assets and liabilities and of the condition and affairs of the said reporting entity as of the reporting period stated above, and of its income and deductions therefrom for the period ended, and have been completed in accordance with the NAIC Annual Statement Instructions and Accounting Practices and Procedures manual except to the extent that: (1) state law may differ; or, (2) that state rules or regulations require differences in reporting not related to accounting practices and procedures, according to the best of their information, knowledge and belief, respectively. Furthermore, the scope of this attestation by the described officers also includes the related corresponding electronic filing with the NAIC, when required, that is an exact copy (except for formatting differences due to electronic filing) of the enclosed statement. The electronic filing may be requested by various regulators in lieu of or in addition to the enclosed statement.

(Signature) Timothy Michael Sweeney	(Signature) Dexter Robert Legg	(Signature) Laurance Henry Soyer Yahia
(Printed Name) 1.	(Printed Name) 2.	(Printed Name) 3.
President and Chief Executive Officer	Vice President and Secretary	Vice President and Treasurer
(Title)	(Title)	(Title)

Subscribed and sworn to (or affirmed) before me on this  
27th day of January, 2014, by

- a. Is this an original filing?  Yes  No
- b. If no: 1. State the amendment number \_\_\_\_\_
2. Date filed \_\_\_\_\_
3. Number of pages attached \_\_\_\_\_

## ASSETS

	Current Year			Prior Year
	1	2	3	4
	Assets	Nonadmitted Assets	Net Admitted Assets (Cols. 1 - 2)	Net Admitted Assets
1. Bonds (Schedule D)	17,356,678		17,356,678	135,780,084
2. Stocks (Schedule D):				
2.1 Preferred stocks				
2.2 Common stocks				
3. Mortgage loans on real estate (Schedule B):				
3.1 First liens				
3.2 Other than first liens				
4. Real estate (Schedule A):				
4.1 Properties occupied by the company (less \$ 0 encumbrances)				
4.2 Properties held for the production of income (less \$ 0 encumbrances)				
4.3 Properties held for sale (less \$ 0 encumbrances)				
5. Cash (\$ (170,119), Schedule E - Part 1), cash equivalents (\$ 0, Schedule E - Part 2), and short-term investments (\$ 173,869, Schedule DA)	3,750		3,750	3,719,110
6. Contract loans (including \$ 0 premium notes)				
7. Derivatives (Schedule DB)				
8. Other invested assets (Schedule BA)				
9. Receivables for securities				230,000
10. Securities lending reinvested collateral assets (Schedule DL)	424,116		424,116	
11. Aggregate write-ins for invested assets				
12. Subtotals, cash and invested assets (Lines 1 to 11)	17,784,544		17,784,544	139,729,194
13. Title plants less \$ 0 charged off (for Title insurers only)				
14. Investment income due and accrued	108,510		108,510	1,199,262
15. Premiums and considerations:				
15.1 Uncollected premiums and agents' balances in the course of collection				2,542,880
15.2 Deferred premiums, agents' balances and installments booked but deferred and not yet due (including \$ 0 earned but unbilled premiums)				25,659,429
15.3 Accrued retrospective premiums				545
16. Reinsurance:				
16.1 Amounts recoverable from reinsurers	6,551,536		6,551,536	4,718,650
16.2 Funds held by or deposited with reinsured companies				
16.3 Other amounts receivable under reinsurance contracts				
17. Amounts receivable relating to uninsured plans				
18.1 Current federal and foreign income tax recoverable and interest thereon	5,142,249		5,142,249	
18.2 Net deferred tax asset	979,000	447,324	531,676	1,637,863
19. Guaranty funds receivable or on deposit				75,657
20. Electronic data processing equipment and software				
21. Furniture and equipment, including health care delivery assets (\$ 0)				
22. Net adjustment in assets and liabilities due to foreign exchange rates				
23. Receivables from parent, subsidiaries and affiliates	1,252,726		1,252,726	2,363,489
24. Health care (\$ 0) and other amounts receivable				
25. Aggregate write-ins for other than invested assets				703,910
26. Total assets excluding Separate Accounts, Segregated Accounts and Protected Cell Accounts (Lines 12 to 25)	31,818,565	447,324	31,371,241	178,630,879
27. From Separate Accounts, Segregated Accounts and Protected Cell Accounts				
28. Total (Lines 26 and 27)	31,818,565	447,324	31,371,241	178,630,879

DETAILS OF WRITE-IN LINES				
1101.				
1102.				
1103.				
1198. Summary of remaining write-ins for Line 11 from overflow page				
1199. Totals (Lines 1101 through 1103 plus 1198) (Line 11 above)				
2501. Cash Surrender Value Life Insurance				484,707
2502. Equities and desosits in pools and associations				216,622
2503. Other assets				2,581
2598. Summary of remaining write-ins for Line 25 from overflow page				
2599. Totals (Lines 2501 through 2503 plus 2598) (Line 25 above)				703,910

## LIABILITIES, SURPLUS AND OTHER FUNDS

	1	2
	Current Year	Prior Year
1. Losses (Part 2A, Line 35, Column 8)		70,731,981
2. Reinsurance payable on paid losses and loss adjustment expenses (Schedule F, Part 1, Column 6)		4,794,727
3. Loss adjustment expenses (Part 2A, Line 35, Column 9)		16,176,036
4. Commissions payable, contingent commissions and other similar charges		2,585,831
5. Other expenses (excluding taxes, licenses and fees)		1,324,603
6. Taxes, licenses and fees (excluding federal and foreign income taxes)		561,963
7.1 Current federal and foreign income taxes (including \$ 0 on realized capital gains (losses))		1,189,051
7.2 Net deferred tax liability		
8. Borrowed money \$ 0 and interest thereon \$ 0		
9. Unearned premiums (Part 1A, Line 38, Column 5) (after deducting unearned premiums for ceded reinsurance of \$ 37,719,063 and including warranty reserves of \$ 0 and accrued accident and health experience rating refunds including \$ 0 for medical loss ratio rebate per the Public Health Service Act)		41,962,084
10. Advance premium		313,588
11. Dividends declared and unpaid:		
11.1 Stockholders	119,773	
11.2 Policyholders		11,233
12. Ceded reinsurance premiums payable (net of ceding commissions)	7,799,627	7,077,514
13. Funds held by company under reinsurance treaties (Schedule F, Part 3, Column 19)		
14. Amounts withheld or retained by company for account of others		105,050
15. Remittances and items not allocated		
16. Provision for reinsurance (including \$ 0 certified) (Schedule F, Part 8)		
17. Net adjustments in assets and liabilities due to foreign exchange rates		
18. Drafts outstanding		2,760,991
19. Payable to parent, subsidiaries and affiliates	2,001,329	1,253,277
20. Derivatives		
21. Payable for securities		
22. Payable for securities lending	424,116	
23. Liability for amounts held under uninsured plans		
24. Capital notes \$ 0 and interest thereon \$ 0		
25. Aggregate write-ins for liabilities		1,216,824
26. Total liabilities excluding protected cell liabilities (Lines 1 through 25)	10,344,845	152,064,753
27. Protected cell liabilities		
28. Total liabilities (Lines 26 and 27)	10,344,845	152,064,753
29. Aggregate write-ins for special surplus funds		140,378
30. Common capital stock	5,000,000	5,000,000
31. Preferred capital stock		
32. Aggregate write-ins for other than special surplus funds		
33. Surplus notes		
34. Gross paid in and contributed surplus	13,232,251	24,232,251
35. Unassigned funds (surplus)	2,794,145	(2,806,503)
36. Less treasury stock, at cost:		
36.1 0 shares common (value included in Line 30 \$ 0)		
36.2 0 shares preferred (value included in Line 31 \$ 0)		
37. Surplus as regards policyholders (Lines 29 to 35, less 36) (Page 4, Line 39)	21,026,396	26,566,126
38. Totals (Page 2, Line 28, Col. 3)	31,371,241	178,630,879

DETAILS OF WRITE-IN LINES		
2501. Amounts held under uninsured plans		40,513
2502. Retroactive reinsurance reserves		661,666
2503. Other Liabilities		514,645
2598. Summary of remaining write-ins for Line 25 from overflow page		
2599. Totals (Lines 2501 through 2503 plus 2598) (Line 25 above)		1,216,824
2901. Special Surplus from retroactive reinsurance		140,378
2902. ....		
2903. ....		
2998. Summary of remaining write-ins for Line 29 from overflow page		
2999. Totals (Lines 2901 through 2903 plus 2998) (Line 29 above)		140,378
3201. ....		
3202. ....		
3203. ....		
3298. Summary of remaining write-ins for Line 32 from overflow page		
3299. Totals (Lines 3201 through 3203 plus 3298) (Line 32 above)		

## STATEMENT OF INCOME

	1	2
	Current Year	Prior Year
<b>UNDERWRITING INCOME</b>		
1. Premiums earned (Part 1, Line 35, Column 4)		85,891,428
DEDUCTIONS:		
2. Losses incurred (Part 2, Line 35, Column 7)		46,610,655
3. Loss adjustment expenses incurred (Part 3, Line 25, Column 1)		10,645,518
4. Other underwriting expenses incurred (Part 3, Line 25, Column 2)		28,097,218
5. Aggregate write-ins for underwriting deductions		
6. Total underwriting deductions (Lines 2 through 5)		85,353,391
7. Net income of protected cells		
8. Net underwriting gain (loss) (Line 1 minus Line 6 plus Line 7)		538,037
<b>INVESTMENT INCOME</b>		
9. Net investment income earned (Exhibit of Net Investment Income, Line 17)	579,736	5,296,215
10. Net realized capital gains (losses) less capital gains tax of \$ (23,902) (Exhibit of Capital Gains (Losses))	(44,390)	701,773
11. Net investment gain (loss) (Lines 9 + 10)	535,346	5,997,988
<b>OTHER INCOME</b>		
12. Net gain or (loss) from agents' or premium balances charged off (amount recovered \$ 0 amount charged off \$ 0)		(226,811)
13. Finance and service charges not included in premiums		734,597
14. Aggregate write-ins for miscellaneous income		(138,053)
15. Total other income (Lines 12 through 14)		369,733
16. Net income before dividends to policyholders, after capital gains tax and before all other federal and foreign income taxes (Lines 8 + 11 + 15)	535,346	6,905,758
17. Dividends to policyholders		205,980
18. Net income, after dividends to policyholders, after capital gains tax and before all other federal and foreign income taxes (Line 16 minus Line 17)	535,346	6,699,778
19. Federal and foreign income taxes incurred	(6,027,098)	908,122
20. Net income (Line 18 minus Line 19) (to Line 22)	6,562,444	5,791,656
<b>CAPITAL AND SURPLUS ACCOUNT</b>		
21. Surplus as regards policyholders, December 31 prior year (Page 4, Line 39, Column 2)	26,566,126	35,020,571
22. Net income (from Line 20)	6,562,444	5,791,656
23. Net transfers (to) from Protected Cell accounts		
24. Change in net unrealized capital gains or (losses) less capital gains tax of \$ 1,405	2,609	66,740
25. Change in net unrealized foreign exchange capital gain (loss)		
26. Change in net deferred income tax	(6,313,595)	(815,063)
27. Change in nonadmitted assets (Exhibit of Nonadmitted Assets, Line 28, Col. 3)	5,750,445	(694,254)
28. Change in provision for reinsurance (Page 3, Line 16, Column 2 minus Column 1)		
29. Change in surplus notes		
30. Surplus (contributed to) withdrawn from protected cells		
31. Cumulative effect of changes in accounting principles		276,498
32. Capital changes:		
32.1 Paid in		
32.2 Transferred from surplus (Stock Dividend)		
32.3 Transferred to surplus		
33. Surplus adjustments:		
33.1 Paid in	(11,000,000)	(1,963,833)
33.2 Transferred to capital (Stock Dividend)		
33.3 Transferred from capital		
34. Net remittances from or (to) Home Office		
35. Dividends to stockholders		(9,673,700)
36. Change in treasury stock (Page 3, Lines 36.1 and 36.2, Column 2 minus Column 1)		
37. Aggregate write-ins for gains and losses in surplus	(541,633)	(1,442,489)
38. Change in surplus as regards policyholders for the year (Lines 22 through 37)	(5,539,730)	(8,454,445)
39. Surplus as regards policyholders, December 31 current year (Lines 21 plus Line 38) (Page 3, Line 37)	21,026,396	26,566,126

<b>DETAILS OF WRITE-IN LINES</b>		
0501.		
0502.		
0503.		
0598. Summary of remaining write-ins for Line 05 from overflow page		
0599. Totals (Lines 0501 through 0503 plus 0598) (Line 05 above)		
1401. Retroactive reinsurance gain/(loss)		282,364
1402. Other income/(expense)		(420,417)
1403.		
1498. Summary of remaining write-ins for Line 14 from overflow page		
1499. Totals (Lines 1401 through 1403 plus 1498) (Line 14 above)		(138,053)
3701. SSAP 10R incremental change		(1,442,489)
3702. Other changes in surplus	(541,633)	
3703.		
3798. Summary of remaining write-ins for Line 37 from overflow page		
3799. Totals (Lines 3701 through 3703 plus 3798) (Line 37 above)	(541,633)	(1,442,489)

## CASH FLOW

Cash from Operations	1 Current Year	2 Prior Year
1. Premiums collected net of reinsurance	(12,949,402)	86,648,866
2. Net investment income	1,772,111	6,040,577
3. Miscellaneous income	71,059	386,012
4. Total (Lines 1 through 3)	(11,106,232)	93,075,455
5. Benefit and loss related payments	80,120,586	47,911,077
6. Net transfers to Separate Accounts, Segregated Accounts and Protected Cell Accounts		
7. Commissions, expenses paid and aggregate write-ins for deductions	20,648,433	38,136,127
8. Dividends paid to policyholders	11,233	205,785
9. Federal and foreign income taxes paid (recovered) net of \$ 0 tax on capital gains (losses)	280,300	(180,002)
10. Total (Lines 5 through 9)	101,060,552	86,072,987
11. Net cash from operations (Line 4 minus Line 10)	(112,166,784)	7,002,468
<b>Cash from Investments</b>		
12. Proceeds from investments sold, matured or repaid:		
12.1 Bonds	128,148,650	39,306,685
12.2 Stocks		
12.3 Mortgage loans		
12.4 Real estate		
12.5 Other invested assets	612,509	15,388,458
12.6 Net gains (or losses) on cash, cash equivalents and short-term investments		
12.7 Miscellaneous proceeds	230,000	(25,000)
12.8 Total investment proceeds (Lines 12.1 to 12.7)	128,991,159	54,670,143
13. Cost of investments acquired (long-term only):		
13.1 Bonds	9,891,146	35,025,219
13.2 Stocks		
13.3 Mortgage loans		
13.4 Real estate		
13.5 Other invested assets	1,036,625	14,812,246
13.6 Miscellaneous applications		540,630
13.7 Total investments acquired (Lines 13.1 to 13.6)	10,927,771	50,378,095
14. Net increase (decrease) in contract loans and premium notes		
15. Net cash from investments (Line 12.8 minus Line 13.7 and Line 14)	118,063,388	4,292,048
<b>Cash from Financing and Miscellaneous Sources</b>		
16. Cash provided (applied):		
16.1 Surplus notes, capital notes		
16.2 Capital and paid in surplus, less treasury stock	(11,000,000)	(1,963,833)
16.3 Borrowed funds		
16.4 Net deposits on deposit-type contracts and other insurance liabilities		
16.5 Dividends to stockholders	(119,773)	9,673,700
16.6 Other cash provided (applied)	1,268,263	(965,156)
17. Net cash from financing and miscellaneous sources (Lines 16.1 to Line 16.4 minus Line 16.5 plus Line 16.6)	(9,611,964)	(12,602,689)
<b>RECONCILIATION OF CASH, CASH EQUIVALENTS AND SHORT-TERM INVESTMENTS</b>		
18. Net change in cash, cash equivalents and short-term investments (Line 11, plus Lines 15 and 17)	(3,715,360)	(1,308,173)
19. Cash, cash equivalents and short-term investments:		
19.1 Beginning of year	3,719,110	5,027,283
19.2 End of year (Line 18 plus Line 19.1)	3,750	3,719,110

Note: Supplemental disclosures of cash flow information for non-cash transactions:

20.0001	12.1 - Proceeds from investments sold, matured or repaid - Bonds	119,830,238	11,588,786
20.0002	13.1 Cost of investments acquired - Bonds	22,466	
20.0003	16.2 - Capital and paid in surplus, less treasury stock	10,590,335	2,326,300
20.0004	16.5 - Dividends to stockholders	119,773	9,358,667

## UNDERWRITING AND INVESTMENT EXHIBIT

### PART 1 – PREMIUMS EARNED

Line of Business	1 Net Premiums Written per Column 6, Part 1B	2 Unearned Premiums Dec. 31 Prior Year- per Col. 3, Last Year's Part 1	3 Unearned Premiums Dec. 31 Current Year- per Col. 5 Part 1A	4 Premiums Earned During Year (Cols. 1 + 2 - 3)
1. Fire	(902,630)	902,630		
2. Allied lines	(828,722)	828,722		
3. Farmowners multiple peril	(358,284)	358,284		
4. Homeowners multiple peril	(8,072,435)	8,072,435		
5. Commercial multiple peril	(7,234,004)	7,234,004		
6. Mortgage guaranty				
8. Ocean marine				
9. Inland marine	(667,019)	667,019		
10. Financial guaranty				
11.1 Medical professional liability—occurrence	(2,053)	2,053		
11.2 Medical professional liability—claims-made	(141)	141		
12. Earthquake	(144,820)	144,820		
13. Group accident and health				
14. Credit accident and health (group and individual)				
15. Other accident and health				
16. Workers' compensation	(2,209,781)	2,209,781		
17.1 Other liability—occurrence	(2,062,929)	2,062,929		
17.2 Other liability—claims-made	(77,225)	77,225		
17.3 Excess workers' compensation				
18.1 Products liability—occurrence	(56,373)	56,373		
18.2 Products liability—claims-made				
19.1,19.2 Private passenger auto liability	(7,128,995)	7,128,995		
19.3,19.4 Commercial auto liability	(2,939,931)	2,939,931		
21. Auto physical damage	(5,740,563)	5,740,563		
22. Aircraft (all perils)				
23. Fidelity	(40,125)	40,125		
24. Surety	(3,325,193)	3,325,193		
26. Burglary and theft	(1,142)	1,142		
27. Boiler and machinery	(767)	767		
28. Credit				
29. International				
30. Warranty				
31. Reinsurance-nonproportional assumed property				
32. Reinsurance-nonproportional assumed liability				
33. Reinsurance-nonproportional assumed financial lines				
34. Aggregate write-ins for other lines of business				
35. TOTALS	(41,793,132)	41,793,132		

DETAILS OF WRITE-IN LINES				
3401.				
3402.				
3403.				
3498. Sum of remaining write-ins for Line 34 from overflow page				
3499. Totals (Lines 3401 through 3403 plus 3498) (Line 34 above)				

**NONE Underwriting and Investment Exhibit - Part 1A**



## UNDERWRITING AND INVESTMENT EXHIBIT

### PART 1B – PREMIUMS WRITTEN

Line of Business	1 Direct Business (a)	Reinsurance Assumed		Reinsurance Ceded		6 Net Premiums Written Cols. 1 + 2 + 3 - 4 - 5
		2 From Affiliates	3 From Non- Affiliates	4 To Affiliates	5 To Non- Affiliates	
1. Fire	295,290	(902,630)		295,290		(902,630)
2. Allied lines	167,717	(828,722)		167,717		(828,722)
3. Farmowners multiple peril		(358,284)				(358,284)
4. Homeowners multiple peril	842,170	(8,072,435)		842,170		(8,072,435)
5. Commercial multiple peril		(7,234,004)				(7,234,004)
6. Mortgage guaranty						
8. Ocean marine						
9. Inland marine	7,349	(667,019)		7,349		(667,019)
10. Financial guaranty						
11.1 Medical professional liability--occurrence		(2,053)				(2,053)
11.2 Medical professional liability--claims-made		(141)				(141)
12. Earthquake	562	(144,820)		562		(144,820)
13. Group accident and health						
14. Credit accident and health (group and individual)						
15. Other accident and health						
16. Workers' compensation		(2,209,781)				(2,209,781)
17.1 Other liability—occurrence	33,770	(2,062,929)		33,770		(2,062,929)
17.2 Other liability—claims-made		(77,225)				(77,225)
17.3 Excess workers' compensation						
18.1 Products liability—occurrence		(56,373)				(56,373)
18.2 Products liability—claims-made						
19.1,19.2 Private passenger auto liability	53,915,541	(7,128,995)		53,915,541		(7,128,995)
19.3,19.4 Commercial auto liability	8,254,076	(2,939,931)		8,254,076		(2,939,931)
21. Auto physical damage	44,033,162	(5,740,563)		44,033,162		(5,740,563)
22. Aircraft (all perils)						
23. Fidelity		(40,125)				(40,125)
24. Surety		(3,325,193)				(3,325,193)
26. Burglary and theft		(1,142)				(1,142)
27. Boiler and machinery		(767)				(767)
28. Credit						
29. International						
30. Warranty						
31. Reinsurance-nonproportional assumed property	X X X					
32. Reinsurance-nonproportional assumed liability	X X X					
33. Reinsurance-nonproportional assumed financial lines	X X X					
34. Aggregate write-ins for other lines of business						
35. TOTALS	107,549,637	(41,793,132)		107,549,637		(41,793,132)

DETAILS OF WRITE-IN LINES						
3401.						
3402.						
3403.						
3498. Sum of remaining write-ins for Line 34 from overflow page						
3499. Totals (Lines 3401 through 3403 plus 3498) (Line 34 above)						

(a) Does the company's direct premiums written include premiums recorded on an installment basis? Yes [ ] No [X]

If yes: 1. The amount of such installment premiums \$ 0

2. Amount at which such installment premiums would have been reported had they been recorded on an annualized basis \$ 0

## UNDERWRITING AND INVESTMENT EXHIBIT PART 2 – LOSSES PAID AND INCURRED

Line of Business	Losses Paid Less Salvage				5 Net Losses Unpaid Current Year (Part 2A, Col. 8)	6 Net Losses Unpaid Prior Year	7 Losses Incurred Current Year (Cols. 4 + 5 - 6)	8 Percentage of Losses Incurred (Col. 7, Part 2) to Premiums Earned (Col. 4, Part 1)
	1 Direct Business	2 Reinsurance Assumed	3 Reinsurance Recovered	4 Net Payments (Cols. 1 + 2 - 3)				
1. Fire	14,431	270,550	14,431	270,550		270,550		
2. Allied lines	43,154	191,534	43,154	191,534		191,534		
3. Farmowners multiple peril		125,940		125,940		125,940		
4. Homeowners multiple peril	496,628	3,554,964	496,628	3,554,964		3,554,964		
5. Commercial multiple peril		14,390,849		14,390,849		14,390,849		
6. Mortgage guaranty								
8. Ocean marine								
9. Inland marine		75,155		75,155		75,155		
10. Financial guaranty								
11.1 Medical professional liability—occurrence		23,826		23,826		23,826		
11.2 Medical professional liability—claims-made		4,501		4,501		4,501		
12. Earthquake		(1,659)		(1,659)		(1,659)		
13. Group accident and health								
14. Credit accident and health (group and individual)								
15. Other accident and health		360,600		360,600		360,600		
16. Workers' compensation		24,399,592		24,399,592		24,399,592		
17.1 Other liability—occurrence		7,264,105		7,264,105		7,264,105		
17.2 Other liability—claims-made		263,510		263,510		263,510		
17.3 Excess workers' compensation								
18.1 Products liability—occurrence		264,803		264,803		264,803		
18.2 Products liability—claims-made								
19.1,19.2 Private passenger auto liability	36,602,632	10,307,137	36,602,632	10,307,137		10,307,137		
19.3,19.4 Commercial auto liability	3,267,441	8,006,707	3,267,441	8,006,707		8,006,707		
21. Auto physical damage	24,513,263	387,318	24,513,263	387,318		387,318		
22. Aircraft (all perils)		2,796		2,796		2,796		
23. Fidelity		14,507		14,507		14,507		
24. Surety		599,974		599,974		599,974		
26. Burglary and theft		21		21		21		
27. Boiler and machinery		187		187		187		
28. Credit								
29. International								
30. Warranty								
31. Reinsurance-nonproportional assumed property	X X X							
32. Reinsurance-nonproportional assumed liability	X X X	225,063		225,063		225,063		
33. Reinsurance-nonproportional assumed financial lines	X X X							
34. Aggregate write-ins for other lines of business								
35. TOTALS	64,937,549	70,731,980	64,937,549	70,731,980		70,731,980		

DETAILS OF WRITE-IN LINES							
3401.							
3402.							
3403.							
3498. Sum of remaining write-ins for Line 34 from overflow page							
3499. Totals (Lines 3401 through 3403 plus 3498) (Line 34 above)							

## UNDERWRITING AND INVESTMENT EXHIBIT

### PART 2A – UNPAID LOSSES AND LOSS ADJUSTMENT EXPENSES

Line of Business	Reported Losses				Incurred But Not Reported			8 Net Losses Unpaid (Cols. 4 + 5 + 6 - 7)	9 Net Unpaid Loss Adjustment Expenses
	1 Direct	2 Reinsurance Assumed	3 Deduct Reinsurance Recoverable	4 Net Losses Excl. Incurred But Not Reported (Cols. 1 + 2 - 3)	5 Direct	6 Reinsurance Assumed	7 Reinsurance Ceded		
1. Fire	4,690		4,690		24,877		24,877		
2. Allied lines	5,500		5,500		1,799		1,799		
3. Farmowners multiple peril									
4. Homeowners multiple peril	10,441		10,441		65,140		65,140		
5. Commercial multiple peril									
6. Mortgage guaranty									
8. Ocean marine									
9. Inland marine					139		139		
10. Financial guaranty									
11.1 Medical professional liability—occurrence									
11.2 Medical professional liability—claims-made									
12. Earthquake								(a)	
13. Group accident and health								(a)	
14. Credit accident and health (group and individual)									
15. Other accident and health									
16. Workers' compensation									
17.1 Other liability—occurrence	25,000		25,000		9,307		9,307		
17.2 Other liability—claims-made									
17.3 Excess workers' compensation									
18.1 Products liability—occurrence									
18.2 Products liability—claims-made									
19.1,19.2 Private passenger auto liability	23,464,624		23,464,624		6,371,250		6,371,250		
19.3,19.4 Commercial auto liability	4,431,031		4,431,031		3,328,231		3,328,231		
21. Auto physical damage	87,539		87,539		752,443		752,443		
22. Aircraft (all perils)									
23. Fidelity									
24. Surety									
26. Burglary and theft									
27. Boiler and machinery									
28. Credit									
29. International									
30. Warranty									
31. Reinsurance-nonproportional assumed property	X X X				X X X				
32. Reinsurance-nonproportional assumed liability	X X X				X X X				
33. Reinsurance-nonproportional assumed financial lines	X X X				X X X				
34. Aggregate write-ins for other lines of business									
35. TOTALS	28,028,825		28,028,825		10,553,186		10,553,186		
<b>DETAILS OF WRITE-IN LINES</b>									
3401.									
3402.									
3403.									
3498. Sum of remaining write-ins for Line 34 from overflow page									
3499. Totals (Lines 3401 through 3403 plus 3498) (Line 34 above)									

(a) Including \$ 0 for present value of life indemnity claims.

## UNDERWRITING AND INVESTMENT EXHIBIT

### PART 3 - EXPENSES

	1	2	3	4
	Loss Adjustment Expenses	Other Underwriting Expenses	Investment Expenses	Total
1. Claim adjustment services:				
1.1 Direct	3,866,582			3,866,582
1.2 Reinsurance assumed				
1.3 Reinsurance ceded	3,866,582			3,866,582
1.4 Net claim adjustment services (1.1 + 1.2 - 1.3)				
2. Commission and brokerage:				
2.1 Direct, excluding contingent		14,333,478		14,333,478
2.2 Reinsurance assumed, excluding contingent				
2.3 Reinsurance ceded, excluding contingent		14,333,478		14,333,478
2.4 Contingent—direct				
2.5 Contingent—reinsurance assumed				
2.6 Contingent—reinsurance ceded				
2.7 Policy and membership fees				
2.8 Net commission and brokerage (2.1+2.2-2.3+2.4+2.5-2.6+2.7)				
3. Allowances to manager and agents				
4. Advertising			46	46
5. Boards, bureaus and associations			2	2
6. Surveys and underwriting reports			275	275
7. Audit of assureds' records				
8. Salary and related items:				
8.1 Salaries			46,207	46,207
8.2 Payroll taxes			199	199
9. Employee relations and welfare			2,221	2,221
10. Insurance			541	541
11. Directors' fees				
12. Travel and travel items			1,681	1,681
13. Rent and rent items			587	587
14. Equipment			1,676	1,676
15. Cost or depreciation of EDP equipment and software			1,665	1,665
16. Printing and stationery			168	168
17. Postage, telephone and telegraph, exchange and express			2,225	2,225
18. Legal and auditing			8,095	8,095
19. Totals (Lines 3 to 18)			65,588	65,588
20. Taxes, licenses and fees:				
20.1 State and local insurance taxes deducting guaranty association credits of \$ 0				
20.2 Insurance department licenses and fees				
20.3 Gross guaranty association assessments				
20.4 All other (excluding federal and foreign income and real estate)				
20.5 Total taxes, licenses and fees (20.1 + 20.2 + 20.3 + 20.4)				
21. Real estate expenses				
22. Real estate taxes				
23. Reimbursements by uninsured plans				
24. Aggregate write-ins for miscellaneous expenses			17,466	17,466
25. Total expenses incurred			83,054	(a) 83,054
26. Less unpaid expenses—current year				
27. Add unpaid expenses—prior year	16,176,036	4,472,397		20,648,433
28. Amounts receivable relating to uninsured plans, prior year				
29. Amounts receivable relating to uninsured plans, current year				
30. TOTAL EXPENSES PAID (Lines 25 - 26 + 27 - 28 + 29)	16,176,036	4,472,397	83,054	20,731,487

DETAILS OF WRITE-IN LINES				
2401. Other expenses			17,466	17,466
2402.				
2403.				
2498. Sum of remaining write-ins for Line 24 from overflow page				
2499. Totals (Lines 2401 through 2403 plus 2498) (Line 24 above)			17,466	17,466

(a) Includes management fees of \$ 83,053 to affiliates and \$ 0 to non-affiliates.

## EXHIBIT OF NET INVESTMENT INCOME

	1 Collected During Year	2 Earned During Year
1. U.S. Government bonds	(a) 681,800	355,509
1.1 Bonds exempt from U.S. tax	(a) 426,124	39,647
1.2 Other bonds (unaffiliated)	(a) 641,685	264,078
1.3 Bonds of affiliates	(a)	
2.1 Preferred stocks (unaffiliated)	(b)	
2.11 Preferred stocks of affiliates	(b)	
2.2 Common stocks (unaffiliated)		
2.21 Common stocks of affiliates		
3. Mortgage loans	(c)	
4. Real estate	(d)	
5. Contract loans		
6. Cash, cash equivalents and short-term investments	(e) 1,337	958
7. Derivative instruments	(f)	
8. Other invested assets		
9. Aggregate write-ins for investment income	2,597	2,597
10. Total gross investment income	1,753,543	662,789
11. Investment expenses		(g) 83,053
12. Investment taxes, licenses and fees, excluding federal income taxes		(g)
13. Interest expense		(h)
14. Depreciation on real estate and other invested assets		(i)
15. Aggregate write-ins for deductions from investment income		
16. Total deductions (Lines 11 through 15)		83,053
17. Net investment income (Line 10 minus Line 16)		579,736

DETAILS OF WRITE-IN LINES		
0901. Miscellaneous Income/(Expense)	2,597	2,597
0902.		
0903.		
0998. Summary of remaining write-ins for Line 09 from overflow page		
0999. Totals (Lines 0901 through 0903 plus 0998) (Line 09 above)	2,597	2,597
1501.		
1502.		
1503.		
1598. Summary of remaining write-ins for Line 15 from overflow page		
1599. Totals (Lines 1501 through 1503 plus 1598) (Line 15 above)		

- (a) Includes \$ 16,603 accrual of discount less \$ 118,225 amortization of premium and less \$ 19,832 paid for accrued interest on purchases.
- (b) Includes \$ 0 accrual of discount less \$ 0 amortization of premium and less \$ 0 paid for accrued dividends on purchases.
- (c) Includes \$ 0 accrual of discount less \$ 0 amortization of premium and less \$ 0 paid for accrued interest on purchases.
- (d) Includes \$ 0 for company's occupancy of its own buildings; and excludes \$ 0 interest on encumbrances.
- (e) Includes \$ 0 accrual of discount less \$ 0 amortization of premium and less \$ 0 paid for accrued interest on purchases.
- (f) Includes \$ 0 accrual of discount less \$ 0 amortization of premium.
- (g) Includes \$ 0 investment expenses and \$ 0 investment taxes, licenses and fees, excluding federal income taxes, attributable to segregated and Separate Accounts.
- (h) Includes \$ 0 interest on surplus notes and \$ 0 interest on capital notes.
- (i) Includes \$ 0 depreciation on real estate and \$ 0 depreciation on other invested assets.

## EXHIBIT OF CAPITAL GAINS (LOSSES)

	1 Realized Gain (Loss) on Sales or Maturity	2 Other Realized Adjustments	3 Total Realized Capital Gain (Loss) (Columns 1 + 2)	4 Change in Unrealized Capital Gain (Loss)	5 Change in Unrealized Foreign Exchange Capital Gain (Loss)
1. U.S. Government bonds	(117,421)		(117,421)		
1.1 Bonds exempt from U.S. tax	38,997		38,997		
1.2 Other bonds (unaffiliated)	10,132		10,132	4,013	
1.3 Bonds of affiliates					
2.1 Preferred stocks (unaffiliated)					
2.11 Preferred stocks of affiliates					
2.2 Common stocks (unaffiliated)					
2.21 Common stocks of affiliates					
3. Mortgage loans					
4. Real estate					
5. Contract loans					
6. Cash, cash equivalents and short-term investments					
7. Derivative instruments					
8. Other invested assets					
9. Aggregate write-ins for capital gains (losses)					
10. Total capital gains (losses)	(68,292)		(68,292)	4,013	

DETAILS OF WRITE-IN LINES					
0901.					
0902.					
0903.					
0998. Summary of remaining write-ins for Line 09 from overflow page					
0999. Totals (Lines 0901 through 0903 plus 0998) (Line 09 above)					

## EXHIBIT OF NONADMITTED ASSETS

	1 Current Year Total Nonadmitted Assets	2 Prior Year Total Nonadmitted Assets	3 Change in Total Nonadmitted Assets (Col. 2 - Col. 1)
1. Bonds (Schedule D)			
2. Stocks (Schedule D):			
2.1 Preferred stocks			
2.2 Common stocks			
3. Mortgage loans on real estate (Schedule B):			
3.1 First liens			
3.2 Other than first liens			
4. Real estate (Schedule A):			
4.1 Properties occupied by the company			
4.2 Properties held for the production of income			
4.3 Properties held for sale			
5. Cash (Schedule E - Part 1), cash equivalents (Schedule E - Part 2), and short-term investments (Schedule DA)			
6. Contract loans			
7. Derivatives (Schedule DB)			
8. Other invested assets (Schedule BA)			
9. Receivables for securities			
10. Securities lending reinvested collateral assets (Schedule DL)			
11. Aggregate write-ins for invested assets			
12. Subtotals, cash and invested assets (Lines 1 to 11)			
13. Title plants (for Title insurers only)			
14. Investment income due and accrued			
15. Premiums and considerations:			
15.1 Uncollected premiums and agents' balances in the course of collection		416,939	416,939
15.2 Deferred premiums, agents' balances and installments booked but deferred and not yet due		20,449	20,449
15.3 Accrued retrospective premiums		61	61
16. Reinsurance:			
16.1 Amounts recoverable from reinsurers			
16.2 Funds held by or deposited with reinsured companies			
16.3 Other amounts receivable under reinsurance contracts			
17. Amounts receivable relating to uninsured plans			
18.1 Current federal and foreign income tax recoverable and interest thereon			
18.2 Net deferred tax asset	447,324	5,656,137	5,208,813
19. Guaranty funds receivable or on deposit			
20. Electronic data processing equipment and software			
21. Furniture and equipment, including health care delivery assets			
22. Net adjustment in assets and liabilities due to foreign exchange rates			
23. Receivables from parent, subsidiaries and affiliates			
24. Health care and other amounts receivable			
25. Aggregate write-ins for other than invested assets		104,184	104,184
26. Total assets excluding Separate Accounts, Segregated Accounts and Protected Cell Accounts (Lines 12 to 25)	447,324	6,197,770	5,750,446
27. From Separate Accounts, Segregated Accounts and Protected Cell Accounts			
28. Total (Lines 26 and 27)	447,324	6,197,770	5,750,446

DETAILS OF WRITE-IN LINES			
1101.			
1102.			
1103.			
1198. Summary of remaining write-ins for Line 11 from overflow page			
1199. Totals (Lines 1101 through 1103 plus 1198) (Line 11 above)			
2501. Other assets		104,184	104,184
2502.			
2503.			
2598. Summary of remaining write-ins for Line 25 from overflow page			
2599. Totals (Lines 2501 through 2503 plus 2598) (Line 25 above)		104,184	104,184

## NOTES TO FINANCIAL STATEMENTS

### **Note 1 - Summary of Significant Accounting Policies**

#### A. Accounting Practices

Effective January 1, 2001, and subject to any deviations prescribed or permitted by the State of Indiana, the accompanying financial statements of American States Preferred Insurance Company (the "Company") have been prepared in conformity with the National Association of Insurance Commissioners ("NAIC") *Accounting Practices and Procedures Manual* ("APP Manual").

The Company does not have any prescribed or permitted accounting practices.

#### B. Use of Estimates in the Preparation of the Financial Statements

The preparation of financial statements requires management to make estimates and assumptions that affect the reported amounts of assets, liabilities, revenues, and expenses. It also requires estimates in the disclosure of contingent assets and liabilities. Actual results could differ from these estimates.

#### C. Accounting Policies

Premiums are earned over the terms of the related policies and reinsurance contracts. Unearned premium reserves are established to cover the unexpired portion of premiums written. Such reserves are computed by pro-rata methods. Expenses incurred in connection with acquiring new insurance business, including acquisition costs such as sales commissions, are charged to operations as incurred. Expenses incurred are reduced for ceding allowances received or receivable.

In addition, the Company applies the following accounting policies, where applicable:

1. Short term investments are carried at cost, adjusted where appropriate for amortization of premium or discount, or fair value as specified by the Purposes and Procedures Manual of the NAIC Securities Valuation Office (SVO Manual).
2. Bonds are carried at cost, adjusted where appropriate for amortization of premium or discount, or fair value as specified by the SVO Manual.
3. Common stocks are carried at fair value, except that investments in stocks of subsidiaries, controlled and affiliated ("SCA") companies are carried according to Note 1C(7).
4. Preferred stocks are carried at cost or fair value as specified by the SVO Manual. Preferred stocks of SCA companies are carried according to Note 1C(7).
5. Mortgage loans are carried at unpaid principal balances, less impairments as specified by the SVO Manual.
6. Mortgage backed/asset backed securities are carried at amortized cost or fair value based on guidance in the SVO Manual. Prepayment assumptions for mortgage backed/asset backed securities are updated monthly. The retrospective adjustment method is used to value all mortgage backed/asset backed securities.
7. Investments in SCA companies are carried in accordance with SSAP No. 97, *Investments in Subsidiary, Controlled, and Affiliated Entities, A Replacement of SSAP No. 88*, and the SVO Manual.
8. Investments in joint ventures, partnerships, and limited liability companies are carried in accordance with SSAP No. 48, *Joint Ventures, Partnerships and Limited Liability Companies*, and the SVO Manual.
9. Derivative Securities, refer to Note 8.
10. Investment income is anticipated as a factor in the premium deficiency calculation, in accordance with SSAP No. 53, *Property Casualty Contracts - Premiums*. Refer to Note 30.
11. Unpaid losses and loss adjustment expenses include an amount determined from individual case estimates and loss reports and an amount, based on past experience, for losses incurred but not reported. Such liabilities are necessarily based on assumptions and estimates, and while management believes the amount is adequate, the ultimate liability may be in excess of or less than the amount provided. The methods, for making such estimates and for establishing the resulting liability, are continually reviewed and follow current standards of practice. Any adjustments to the liability are reflected in the period that they are determined.
12. Effective January 1, 2013 the Company changed the predefined thresholds in its capitalization policy for internally developed software. The change was to bring the thresholds for internally developed software in line with industry standards. The Company's capitalization policy, including the predefined thresholds, for all other asset classes did not change.
13. The Company has no pharmaceutical rebate receivables.

### **Note 2 - Accounting Changes and Correction of Errors**

Effective January 1, 2013 the Company Adopted SSAP No. 92, Postretirement Benefits Other Than Pensions, a Replacement of SSAP No. 14 and SSAP No. 102, Accounting for Pensions, a Replacement of SSAP No. 89. Also effective January 1, 2013, the Company adopted Ref #2013-02, Accounting for Deferred Compensation and Post Retirement Benefit Aspects of Endorsement Split-Dollar Life Insurance Arrangements. The Company elected the transition option for

## NOTES TO FINANCIAL STATEMENTS

recognizing the surplus impact of adopting SSAP No. 92, SSAP No. 102 and Ref #2013-02. The cumulative effect of adopting SSAP No. 92, SSAP No. 102 and Ref #2013-02 is reported in the capital and surplus account and is not considered material.

### **Note 3 - Business Combinations and Goodwill**

#### A. Statutory Purchase Method

The Company did not enter into any statutory purchases during the year.

#### B. Statutory Mergers

The Company did not enter into any statutory mergers during the year.

#### C. Impairment Loss

The Company did not recognize an impairment loss during the period.

### **Note 4 - Discontinued Operations**

The Company has no discontinued operations.

### **Note 5 - Investments**

#### A. Mortgage Loans, including Mezzanine Real Estate Loans

The Company does not invest in mortgage loans.

#### B. Troubled Debt Restructuring for Creditors

Not applicable

#### C. Reverse Mortgages

The Company has no reverse mortgages.

#### D. Loan Backed Securities

1. Prepayment speed assumptions are updated monthly with data sourced from the Bloomberg data service.
2. All Loan Backed Securities with a recognized other-than-temporary impairment disclosed in the aggregate during 2013 as of December 31, 2013: None
3. Each Loan Backed Security with a recognized other-than-temporary impairment held by the Company at December 31, 2013: None
4. All impaired Loan Backed Securities for which an other-than-temporary impairment has not been recognized in earnings as a realized loss as of December 31, 2013:

a. The aggregate amount of unrealized losses:	1. Less than 12 Months	\$	25,626
	2. 12 Months or Longer	\$	48,085
b. The aggregate amount of unrealized losses:	1. Less than 12 Months	\$	952,849
	2. 12 Months or Longer	\$	890,716

5. The Company reviews fixed income securities for impairment on a quarterly basis. Securities are reviewed for both quantitative and qualitative considerations including, but not limited to: (a) the extent of the decline in fair value below book value, (b) the duration of the decline, (c) significant adverse changes in the financial condition or near term prospects of the investment or issuer, (d) significant change in the business climate or credit ratings of the issuer, (e) general market conditions and volatility, (f) industry factors, and (g) the past impairment of the security holding or the issuer. If the Company believes a decline in the value of a particular investment is temporary, the decline is recorded as an unrealized loss in policyholders' surplus. If the decline is believed to be "other-than-temporary," and the Company believes it will not be able to collect all cash flows due on its fixed income securities, then the carrying value of the investment is written down to the expected cash flow amount and a realized loss is recorded as a credit impairment.

#### E. Repurchase Agreements and Securities Lending

1. The Company has not entered into any repurchase agreements during the year. Refer to Note 17B for the policy on requiring collateral related to securities lending.
2. The Company has not pledged any of its assets as collateral as of December 31, 2013.



## NOTES TO FINANCIAL STATEMENTS

3. Aggregate Amount of Contractually open cash collateral positions:

a. Aggregate Amount Cash Collateral Received

	<u>Fair Value</u>
1. Repurchase Agreement	
(a) Open	\$ -
(b) 30 Days or Less	-
(c) 31 to 60 Days	-
(d) 61 to 90 Days	-
(e) Greater Than 90 Days	-
(f) Sub-Total	-
(g) Securities Received	-
(h) Total Collateral Received	\$ -

2. Securities Lending	
(a) Open	\$ 424,116
(b) 30 Days or Less	-
(c) 31 to 60 Days	-
(d) 61 to 90 Days	-
(e) Greater Than 90 Days	-
(f) Sub-Total	424,116
(g) Securities Received	550,811
(h) Total Collateral Received	\$ 974,927

3. Dollar Repurchase Agreement	
(a) Open	\$ -
(b) 30 Days or Less	-
(c) 31 to 60 Days	-
(d) 61 to 90 Days	-
(e) Greater Than 90 Days	-
(f) Sub-Total	-
(g) Securities Received	-
(h) Total Collateral Received	\$ -

b. The aggregate fair value of all securities acquired from the sale, trade or use of the accepted collateral (reinvested collateral) \$ 424,116

c. All collateral is received in the form of cash and/or securities equal to or in excess of 102% of the loaned value and are maintained in a separate custody account. Cash collateral is reinvested into short-term investments as outlined in the terms of the investment agreement. Per the terms of the investment agreement the company has the right and ability to redeem any eligible securities on short notice.

4. Securities Lending Transactions Administered by an Affiliated Agent

The Company's security lending transactions are not administered by an affiliate agent.

5. Collateral Reinvestment

a. Aggregate Amount Cash Collateral Reinvested

	<u>Amortized Cost</u>	<u>Fair Value</u>
1. Repurchase Agreement		
(a) Open	\$ -	\$ -
(b) 30 Days or Less	-	-
(c) 31 to 60 Days	-	-
(d) 61 to 90 Days	-	-
(e) 91 to 120 Days	-	-
(f) 121 to 180 Days	-	-
(g) 181 to 365 Days	-	-
(h) 1 to 2 Years	-	-
(i) 2 to 3 Years	-	-
(j) Greater Than 3 Years	-	-
(k) Sub-Total	-	-
(l) Securities Received	-	-
(m) Total Collateral Reinvested	\$ -	\$ -
2. Securities Lending		
(a) Open	\$ -	\$ -
(b) 30 Days or Less	170,105	170,076

## NOTES TO FINANCIAL STATEMENTS

(c) 31 to 60 Days	143,089	143,089
(d) 61 to 90 Days	110,951	110,951
(e) 91 to 120 Days	-	-
(f) 121 to 180 Days	-	-
(g) 181 to 365 Days	-	-
(h) 1 to 2 Years	-	-
(i) 2 to 3 Years	-	-
(j) Greater Than 3 Years	-	-
(k) Sub-Total	424,145	424,116
(l) Securities Received	-	-
(m) Total Collateral Reinvested	\$ 424,145	\$ 424,116

### 3. Dollar Repurchase Agreement

(a) Open	\$ -	\$ -
(b) 30 Days or Less	-	-
(c) 31 to 60 Days	-	-
(d) 61 to 90 Days	-	-
(e) 91 to 120 Days	-	-
(f) 121 to 180 Days	-	-
(g) 181 to 365 Days	-	-
(h) 1 to 2 Years	-	-
(i) 2 to 3 Years	-	-
(j) Greater Than 3 Years	-	-
(k) Sub-Total	-	-
(l) Securities Received	-	-
(m) Total Collateral Reinvested	\$ -	\$ -

b. The reporting entity's sources of cash that it uses to return the cash collateral is dependent on the liquidity of the current market conditions. Under current conditions, the reporting entity could liquidate all or a portion of its cash collateral reinvestment securities in order to meet the collateral calls that could come due under a worst-case scenario.

6. The securities collateral currently not listed on the balance sheet, which has been pledged to the Company against a borrowed position is not restricted from use in the event the Company wanted to use it.
7. The Company's securities lending program is an open transaction (not contract based), and as such, the Company can recall the security lent at any time.

### F. Real Estate

The Company does not own real estate.

### G. Investments in Low-Income Housing Tax Credits

The Company does not hold investments in low-income housing tax credits.

### H. Restricted Assets

#### 1. Restricted Assets (Including Pledged)

Restricted Asset Category	Gross Restricted							8 Total Current Year Admitted Restricted	Percentage	
	Current Year					6 Total From Prior Year	7 Increase / (Decrease) (5 minus 6)		9 Gross Restricted to Total Assets	10 Admitted Restricted to Total Admitted Assets
	1 Total General Account (G/A)	2 G/A Supporting Protected Cell Account Activity (a)	3 Total Protected Cell Account Restricted Assets	4 Protected Cell Account Assets Supporting G/A Activity (b)	5 Total (1 plus 3)					
a. Subject to contractual obligation for which liability is not shown	-	-	-	-	\$-	\$-	\$-	\$-	0%	0%
b. Collateral held under security lending agreements	424,116	-	-	-	\$424,116	\$-	\$424,116	\$424,116	1%	1%
c. Subject to repurchase agreements	-	-	-	-	\$-	\$-	\$-	\$-	0%	0%
d. Subject to reverse repurchase agreements	-	-	-	-	\$-	\$-	\$-	\$-	0%	0%

## NOTES TO FINANCIAL STATEMENTS

e. Subjects to dollar repurchase agreements	-	-	-	-	\$-	\$-	\$-	\$-	0%	0%
f. Subject to dollar reverse repurchase agreements	-	-	-	-	\$-	\$-	\$-	\$-	0%	0%
g. Placed under option contracts	-	-	-	-	\$-	\$-	\$-	\$-	0%	0%
h. Letter stock or securities restricted as to sale	-	-	-	-	\$-	\$-	\$-	\$-	0%	0%
i. On deposit with states	5,925,257	-	-	-	\$5,925,257	\$5,972,735	\$(47,478)	\$5,925,257	19%	19%
j. On deposit with other regulatory bodies	-	-	-	-	\$-	\$-	\$-	\$-	0%	0%
k. Pledged as collateral not captured in other categories	-	-	-	-	\$-	\$-	\$-	\$-	0%	0%
l. Other restricted assets	-	-	-	-	\$-	\$-	\$-	\$-	0%	0%
m. Total Restricted Assets	\$6,349,373	\$-	\$-	\$-	\$6,349,373	\$5,972,735	\$376,638	\$6,349,373	20%	20%

(a) Subset of column 1

(b) Subset of column 3

2. Detail of Assets Pledged as Collateral Not Captured in Other Categories (Contracts that Share Similar Characteristics, Such as Reinsurance and Derivatives, Are reported in the Aggregate)

Not Applicable

3. Detail of Other Restricted Assets (Contracts that Share Similar Characteristics, Such as Reinsurance and Derivatives, Are reported in the Aggregate)

Not Applicable

### **Note 6 - Joint Ventures, Partnerships & Limited Liability Companies**

- A. Investments in joint ventures, partnerships and limited liability companies that exceed 10% of its admitted assets

The Company has no investments in joint ventures, partnerships, or limited liability companies.

- B. Impairments on joint ventures, partnerships or limited liability companies

The Company does not own any investments in joint ventures, partnerships, and limited liability companies.

### **Note 7 - Investment Income**

- A. Accrued Investment Income

The Company does not admit investment income due and accrued if amounts are over 90 days past due (over 180 days for mortgage loans in default).

- B. Amounts Nonadmitted

No amounts were excluded as of December 31, 2013.

### **Note 8 - Derivative Instruments**

The Company's investment activities do not include derivatives. However, the Company may acquire derivatives as additions to bond, common stock, or preferred stock investments. These derivatives are ancillary to the overall investment and are immaterial to the underlying investment portfolio.

## NOTES TO FINANCIAL STATEMENTS

### Note 9 - Income Taxes

A. The components of the net deferred tax asset/(liability) at December 31 are as follows:

1.

	12/31/2013		
	(1)	(2)	(3)
	Ordinary	Capital	(Col 1+2) Total
(a) Gross Deferred Tax Assets	\$ 1,464,250	\$ 182,350	\$ 1,646,600
(b) Statutory Valuation Allowance Adjustments	-	-	-
(c) Adjusted Gross Deferred Tax Assets (1a – 1b)	1,464,250	182,350	1,646,600
(d) Deferred Tax Assets Nonadmitted	366,474	80,850	447,324
(e) Subtotal Net Admitted Deferred Tax Asset (1c – 1d)	1,097,776	101,500	1,199,276
(f) Deferred Tax Liabilities	566,100	101,500	667,600
(g) Net Admitted Deferred Tax Asset (Net Deferred Tax Liability) (1e – 1f)	\$ 531,676	\$ -	\$ 531,676

	12/31/2012		
	(4)	(5)	(6)
	Ordinary	Capital	(Col 4+5) Total
(a) Gross Deferred Tax Assets	\$ 7,894,395	\$ 117,605	\$ 8,012,000
(b) Statutory Valuation Allowance Adjustments	-	-	-
(c) Adjusted Gross Deferred Tax Assets (1a – 1b)	7,894,395	117,605	8,012,000
(d) Deferred Tax Assets Nonadmitted	5,644,232	11,905	5,656,137
(e) Subtotal Net Admitted Deferred Tax Asset (1c – 1d)	2,250,163	105,700	2,355,863
(f) Deferred Tax Liabilities	612,300	105,700	718,000
(g) Net Admitted Deferred Tax Asset (Net Deferred Tax Liability) (1e – 1f)	\$ 1,637,863	\$ -	\$ 1,637,863

	Change		
	(7)	(8)	(9)
	(Col 1-4) Ordinary	(Col 2-5) Capital	(Col 7+8) Total
(a) Gross Deferred Tax Assets	\$ (6,430,145)	\$ 64,745	\$ (6,365,400)
(b) Statutory Valuation Allowance Adjustments	-	-	-
(c) Adjusted Gross Deferred Tax Assets (1a – 1b)	(6,430,145)	64,745	(6,365,400)
(d) Deferred Tax Assets Nonadmitted	(5,277,758)	68,945	(5,208,813)
(e) Subtotal Net Admitted Deferred Tax Asset (1c – 1d)	(1,152,387)	(4,200)	(1,156,587)
(f) Deferred Tax Liabilities	(46,200)	(4,200)	(50,400)
(g) Net Admitted Deferred Tax Asset (Net Deferred Tax Liability) (1e – 1f)	\$ (1,106,187)	\$ -	\$ (1,106,187)

2.

	12/31/2013		
	(1)	(2)	(3)
	Ordinary	Capital	(Col 1+2) Total
Admission Calculation Components SSAP No. 101			
(a) Federal Income Taxes Paid In Prior Years Recoverable Through Loss Carrybacks	\$ -	\$ -	\$ -
(b) Adjusted Gross Deferred Tax Assets Expected To Be Realized (Excluding The Amount Of Deferred Tax Assets From 2(a) above) After Application of the Threshold Limitation (The Lesser of 2(b)1 and 2(b)2 Below)	531,676	-	531,676
1. Adjusted Gross Deferred Tax Assets Expected to be Realized Following the Balance Sheet Date.	531,676	-	531,676
2. Adjusted Gross Deferred Tax Assets Allowed per Limitation Threshold.			3,074,208
(c) Adjusted Gross Deferred Tax Assets (Excluding The Amount of Deferred Tax Assets From 2(a) and 2(b) above) Offset by Gross Deferred Tax Liabilities	566,100	101,500	667,600
(d) Deferred Tax Assets Admitted as the result of application of SSAP No. 101 (2(a) + 2(b) + 2(c))	\$ 1,097,776	\$ 101,500	\$ 1,199,276

## NOTES TO FINANCIAL STATEMENTS

	12/31/2012		
	(4)	(5)	(6)
	Ordinary	Capital	(Col 4+5) Total
<b>Admission Calculation Components SSAP No. 101</b>			
(a) Federal Income Taxes Paid In Prior Years Recoverable Through Loss Carrybacks	\$ 1,304,100	\$ -	\$ 1,304,100
(b) Adjusted Gross Deferred Tax Assets Expected To Be Realized (Excluding The Amount Of Deferred Tax Assets From 2(a) above) After Application of the Threshold Limitation (The Lesser of 2(b)1 and 2(b)2 Below)	333,763	-	333,763
1. Adjusted Gross Deferred Tax Assets Expected to be Realized Following the Balance Sheet Date.	333,763	-	333,763
2. Adjusted Gross Deferred Tax Assets Allowed per Limitation Threshold.			3,983,550
(c) Adjusted Gross Deferred Tax Assets (Excluding The Amount of Deferred Tax Assets From 2(a) and 2(b) above) Offset by Gross Deferred Tax Liabilities	612,300	105,700	718,000
(d) Deferred Tax Assets Admitted as the result of application of SSAP No. 101 (2(a) + 2(b) + 2(c))	\$ 2,250,163	\$ 105,700	\$ 2,355,863

	Change		
	(7)	(8)	(9)
	(Col 1-4) Ordinary	(Col 2-5) Capital	(Col 7+8) Total
<b>Admission Calculation Components SSAP No. 101</b>			
(a) Federal Income Taxes Paid In Prior Years Recoverable Through Loss Carrybacks	\$ (1,304,100)	\$ -	\$ (1,304,100)
(b) Adjusted Gross Deferred Tax Assets Expected To Be Realized (Excluding The Amount Of Deferred Tax Assets From 2(a) above) After Application of the Threshold Limitation (The Lesser of 2(b)1 and 2(b)2 Below)	197,913	-	197,913
1. Adjusted Gross Deferred Tax Assets Expected to be Realized Following the Balance Sheet Date.	197,913	-	197,913
2. Adjusted Gross Deferred Tax Assets Allowed per Limitation Threshold.			(909,342)
(c) Adjusted Gross Deferred Tax Assets (Excluding The Amount of Deferred Tax Assets From 2(a) and 2(b) above) Offset by Gross Deferred Tax Liabilities	(46,200)	(4,200)	(50,400)
(d) Deferred Tax Assets Admitted as the result of application of SSAP No. 101. Total (2(a) + 2(b) + 2(c))	\$ (1,152,387)	\$ (4,200)	\$ (1,156,587)

3.

	2013	2012
(a) Ratio Percentage Used To Determine Recovery Period And Threshold Limitation Amount.	29137.89%	329.34%
(b) Amount of Adjusted Capital And Surplus Used To Determine Recovery Period And Threshold Limitation In 2(b)2 Above.	20,494,720	24,928,263

4.

	12/31/2013		12/31/2012		Change	
	(1)	(2)	(3)	(4)	(5)	(6)
	Ordinary	Capital	Ordinary	Capital	(Col 1-3) Ordinary	(Col 2-4) Capital
<b>Impact of Tax-Planning Strategies</b>						
(a) Determination of adjusted gross deferred tax assets and net admitted deferred tax assets, by tax character as a percentage.						
1. Adjusted Gross DTAs amount from Note 9A1 (c)	\$ 1,464,250	\$ 182,350	\$ 7,894,395	\$ 117,605	(6,430,145)	\$ 64,745
2. Percentage of adjusted gross DTAs by tax character to the impact of tax planning strategies.	0%	0%	0%	0%	0%	0%
3. Net Admitted Adjusted Gross DTAs amount from Note 9A1 (e)	\$ 1,097,776	\$ 101,500	\$ 2,250,163	\$ 105,700	(1,152,387)	\$ (4,200)
4. Percentage of net admitted adjusted gross DTAs by tax character admitted because of the impact of tax planning strategies.	0%	0%	0%	0%	0%	0%

## NOTES TO FINANCIAL STATEMENTS

(b) Does the Company's tax-planning strategies include the use of reinsurance: Yes \_\_\_ No X

B. The Company does not have any DTLs described in SSAP No. 101 Income Taxes, a Replacement of SSAP No. 10R and SSAP No. 10, paragraph 23.

C. Current income taxes incurred consist of the following major components:

	(1) 12/31/2013	(2) 12/31/2012	(3) (Col 1-2) Change
<b>1. Current Income Tax</b>			
(a) Federal	\$ (6,027,098)	\$ 908,122	\$ (6,935,220)
(b) Foreign	-	-	-
(c) Subtotal	(6,027,098)	908,122	(6,935,220)
(d) Federal income tax on net capital gains	(23,902)	377,878	(401,780)
(e) Utilization of capital loss carry-forwards	-	-	-
(f) Other	-	-	-
(g) Federal and foreign income tax incurred	\$ (6,051,000)	\$ 1,286,000	\$ (7,337,000)
<b>2. Deferred Tax Assets:</b>			
(a) Ordinary			
(1) Discounting of unpaid losses	\$ -	\$ 2,405,000	\$ (2,405,000)
(2) Unearned premium reserve	-	2,954,000	(2,954,000)
(3) Policyholder reserves	-	-	-
(4) Investments	151,000	151,000	-
(5) Deferred acquisition costs	-	-	-
(6) Policyholder dividends accrual	-	-	-
(7) Fixed Assets	15,000	61,000	(46,000)
(8) Compensation and benefits accrual	310,000	536,000	(226,000)
(9) Pension accrual	66,000	102,000	(36,000)
(10) Receivables – nonadmitted	-	190,000	(190,000)
(11) Net operating loss carry-forward	720,000	923,000	(203,000)
(12) Tax credit carry-forward	177,000	177,000	-
(13) Other (including items <5% of total ordinary tax assets)	25,250	395,395	(370,145)
(99) Subtotal	1,464,250	7,894,395	(6,430,145)
(b) Statutory valuation allowance adjustment	-	-	-
(c) Nonadmitted	366,474	5,644,232	(5,277,758)
(d) Admitted ordinary deferred tax assets (2a99 – 2b – 2c)	1,097,776	2,250,163	(1,152,387)
(e) Capital			
(1) Investments	182,350	117,605	64,745
(2) Net capital loss carry-forward	-	-	-
(3) Real estate	-	-	-
(4) Other (including items <5% of total capital tax assets)	-	-	-
(99) Subtotal	182,350	117,605	64,745
(f) Statutory valuation allowance adjustment	-	-	-
(g) Nonadmitted	80,850	11,905	68,945
(h) Admitted capital deferred tax assets (2e99 – 2f – 2g)	101,500	105,700	(4,200)
(i) Admitted deferred tax assets (2d + 2h)	1,199,276	2,355,863	(1,156,587)
<b>3. Deferred Tax Liabilities:</b>			
(a) Ordinary			
(1) Investments	327,000	426,000	(99,000)
(2) Fixed assets	-	15,000	(15,000)
(3) Deferred and uncollected premium	-	-	-
(4) Policyholder reserves	-	-	-
(5) Other (including items <5% of total capital tax liabilities)	239,100	171,300	67,800
(99) Subtotal	566,100	612,300	(46,200)
(b) Capital:			
(1) Investments	101,500	105,700	(4,200)
(2) Real estate	-	-	-

## NOTES TO FINANCIAL STATEMENTS

(3) Other (including items <5% of total capital tax liabilities)	-	-	-
(99) Subtotal	101,500	105,700	(4,200)
(c) Deferred tax liabilities (3a99 + 3b99)	667,600	718,000	(50,400)
4. Net deferred tax assets/liabilities (2i – 3c)	\$ 531,676	\$ 1,637,863	\$ (1,106,187)

- D. Effective tax rates differ from the current statutory rate of 35% principally due to the effects of net operating losses generated in 2011, compensation, tax exempt interest, accrued expenses, depreciation, accrual of market discount on owned securities, and unearned premium reserve deductions.
- E. The Company has net operating loss carry-forwards which expire as follows:

Year Generated	Amount	Expiration
2011	\$2,058,095	2031

The Company has alternative minimum tax credit carry-forwards of \$177,000. The alternative minimum tax credit carry-forward does not expire.

The amount of Federal income taxes incurred and available for recoupment in the event of future losses are none from the current year and \$1,189,488 from the preceding year.

The Company does not have deposits admitted under Section 6603 of the Internal Revenue Code.

- F. The Company's Federal income tax return is consolidated with the following entities:

<p>AMBCO Capital Corporation            America First Insurance Company            America First Lloyd's Insurance Company            American Economy Insurance Company            American Fire and Casualty Company            American States Insurance Company            American States Insurance Company of Texas            American States Lloyds Insurance Company            American States Preferred Insurance Company            Barrier Ridge LLC            Berkeley Holding Company Associates, Inc.            Berkeley Management Corporation            Bridgefield Casualty Insurance Company            Bridgefield Employers Insurance Company            Capitol Court Corporation            Cascade Disability Management, Inc.            Colorado Casualty Insurance Company            Commercial Aviation Insurance, Inc.            Consolidated Insurance Company            Copley Venture Capital, Inc.            Diversified Settlements, Inc.            Emerald City Insurance Agency, Inc.            Employers Insurance Company of Wausau            Excelsior Insurance Company            F.B. Beattie &amp; Co., Inc.            First National Insurance Company of America            First State Agency Inc.            General America Corporation            General America Corporation of Texas            General Insurance Company of America            Golden Eagle Insurance Corporation            Gulf States AIF, Inc.            Hawkeye-Security Insurance Company            Indiana Insurance Company            Insurance Company of Illinois            LEXCO Limited            Liberty-USA Corporation            Liberty Assignment Corporation            Liberty Energy Canada, Inc.            Liberty Financial Services, Inc.            Liberty Hospitality Group, Inc.            Liberty Insurance Corporation            Liberty Insurance Holdings, Inc.</p>	<p>Liberty Mutual Insurance Company            Liberty Mutual Personal Insurance Company            Liberty Northwest Insurance Corporation            Liberty Personal Insurance Company            Liberty RE (Bermuda) Limited            Liberty Sponsored Insurance (Vermont), Inc.            Liberty Surplus Insurance Corporation            LIH-RE of America Corporation            LIU Specialty Insurance Agency Inc.            LM General Insurance Company            LM Insurance Corporation            LM Property and Casualty Insurance Company            LMHC Massachusetts Holdings Inc.            LRE Properties, Inc.            Mid-American Fire &amp; Casualty Company            North Pacific Insurance Company            Ocasco Budget, Inc.            OCI Printing, Inc.            Ohio Casualty Corporation            Ohio Security Insurance Company            Open Seas Solutions, Inc.            Oregon Automobile Insurance Company            Peerless Indemnity Insurance Company            Peerless Insurance Company            Pilot Insurance Services, Inc.            Rianoc Research Corporation            S.C. Bellevue, Inc.            SAFECARE Company, Inc.            Safeco Corporation            Safeco General Agency, Inc.            Safeco Insurance Company of America            Safeco Insurance Company of Illinois            Safeco Insurance Company of Indiana            Safeco Insurance Company of Oregon            Safeco Lloyds Insurance Company            Safeco National Insurance Company            Safeco Properties, Inc.            Safeco Surplus Lines Insurance Company            San Diego Insurance Company            SCIT, Inc.            St. James Insurance Company Ltd.            Summit Consulting, Inc. of Louisiana            Summit Holding Southeast, Inc.</p>
---	--

## NOTES TO FINANCIAL STATEMENTS

Liberty Insurance Underwriters Inc.	The First Liberty Insurance Corporation
Liberty International Europe Inc.	The Midwestern Indemnity Company
Liberty International Holdings Inc.	The National Association
Liberty Life Assurance Company of Boston	The Netherlands Insurance Company
Liberty Life Holdings Inc.	The Ohio Casualty Insurance Company
Liberty Lloyds of Texas Insurance Company	Wausau Business Insurance Company
Liberty Management Services, Inc.	Wausau General Insurance Company
Liberty Mexico Holdings Inc.	Wausau Underwriters Insurance Company
Liberty Mutual Agency Corporation	West American Insurance Company
Liberty Mutual Fire Insurance Company	Winmar Company, Inc.
Liberty Mutual Group Asset Management Inc.	Winmar of the Desert, Inc.
Liberty Mutual Group Inc.	Winmar Oregon, Inc.
Liberty Mutual Holding Company Inc.	Winmar-Metro, Inc.

The method of federal income tax allocation is subject to a written agreement. Allocation is based upon separate return calculations with credit applied for losses as appropriate. The Company has the enforceable right to recoup prior year payments in the event of future losses.

- G. The Company does not expect the Federal and Foreign income tax loss contingencies, as determined in accordance with SSAP No. 5R, Liabilities, Contingencies and Impairments of Assets, with the modifications provided in SSAP No. 101, Income Taxes – A Replacement of SSAP No. 10R and SSAP No. 10, to significantly increase within twelve months of the reporting date.

### **Note 10 - Information Concerning Parent, Subsidiaries and Affiliates**

- A. All of the outstanding shares of capital stock of the Company are held by Safeco Corporation (“Safeco”), an insurance holding company incorporated in Washington. Safeco is wholly owned by Liberty Mutual Agency Corporation, an insurance holding company incorporated in Delaware. Liberty Mutual Agency Corporation is wholly owned by Liberty Insurance Holdings, Inc., an insurance holding company incorporated in Delaware. Liberty Insurance Holdings, Inc. is wholly owned by Liberty Mutual Insurance Company (“LMIC”), a Massachusetts insurance company. The ultimate parent of LMIC is Liberty Mutual Holding Company Inc., a Massachusetts company.
- B. Transactions between the Company and its affiliates are listed on Schedule Y Part 2.
- C. There have been no material transactions with the Company’s affiliates during 2013.
- D. At December 31, 2013, the Company reported a net \$748,603 due to affiliates. In general, the terms of the intercompany arrangements require settlement at least quarterly.
- E. The Company has not made any guarantees or initiated any undertakings, written or otherwise, for the benefit of affiliates or other related parties.
- F. Refer to Note 26 for information regarding the Inter-Company Reinsurance Agreement.

The Company is a party to a management services agreement (the “Agreement”) with Liberty Mutual Insurance Company (“LMIC”). Under the Agreement, LMIC may provide the Company with office space, supplies, equipment, telephone and wire services, the use of computers and similar machines and services of personnel employed by LMIC and LMGI. Services provided include, but are not limited to, risk underwriting, claims processing, claims adjustments, policyholder services, contract management and administration. LMIC is reimbursed for the cost of all services which it provides under the Agreement.

The Company is a party to an investment management agreement and a cash management agreement with Liberty Mutual Group Asset Management Inc. (“LMGAM”). Under these agreements, LMGAM provides services to the Company.

The Company is party to a Federal Tax Sharing Agreement between LMHC and affiliates (Refer to Note 9F).

The Company is a party to an Amended and Restated Intercompany Short -Term Borrowing Agreement with Safeco Corporation. Pursuant to the agreement, each party agrees to lend funds to any other party to the agreement for a maximum term of 12 months. The amount of the loan is limited by statutory requirements of the Insurance Holding Company Act of the state of domicile of the Company.

There were no outstanding borrowings as of December 31, 2013.

- G. The Company is a member of a holding company structure as illustrated in Schedule Y Part 1.
- H. The Company does not own shares of any upstream intermediate or ultimate parent, either directly or indirectly via a downstream subsidiary, controlled or affiliated company.
- I. The Company does not own investments in subsidiary, controlled or affiliated companies .
- J. The Company does not own any investments in subsidiary, controlled or affiliated entities, as such no impairments were recognized.
- K. The Company does not hold any investments in foreign insurance subsidiaries.



## NOTES TO FINANCIAL STATEMENTS

- L. The Company does not hold any investments in downstream non-insurance holding companies.

### **Note 11 - Debt**

- A. Debt (Including Capital Notes)

The Company has no debt, including capital notes.

- B. Federal Home Loan Bank Agreements

The Company has not entered into any agreements with the Federal Home Loan Bank.

### **Note 12 - Retirement Plans, Deferred Compensation, Compensated Absences, Post Employment Benefits and Other Postretirement Benefit Plans**

The Company does not have any direct employees and therefore, does not have any direct obligations for a defined benefit plan, deferred compensation arrangements, compensated absences or other post retirement benefit plans. Services for the operation of the Company are provided under provisions of the management services agreements, as described in Note 10F.

### **Note 13 - Capital and Surplus, Shareholders' Dividend restrictions and Quasi-Reorganizations**

1. The Company has 1,000 shares authorized, issued and outstanding as of December 31, 2013. All shares have a stated par value of \$5,000.
2. Preferred Stock  
Not applicable
3. There are no dividend restrictions.
4. The Company paid ordinary and extraordinary dividends to its parent in 2013 of:

	Ordinary	Extraordinary	Total Dividends
March	\$ -	\$ -	\$ -
June	-	-	-
September	-	-	-
December	-	11,000,000	11,000,000
Total	\$ -	\$11,000,000	\$ 11,000,000

Of this total, \$11,000,000 was a return of capital distribution.

Of this total, \$119,773 was unpaid as of December 31, 2013. The unpaid amount was settled in January 2014.

5. The maximum amount of dividends which can be paid by Indiana-domiciled insurance companies to shareholders without the prior approval of the Insurance Commissioner is the greater of (a) 10% of surplus or (b) net income, subject to the availability of accumulated undistributed earnings. The maximum dividend payout which may be made without prior approval in 2014 is \$2,794,145.
6. The Company does not have restricted unassigned surplus.
7. The Company had no advances to surplus.
8. The Company does not hold stock for special purposes.
9. The Company had changes in special surplus funds resulting from prior year's retroactive reinsurance contracts during 2013.
10. The Company does not hold special surplus funds.
11. Surplus Notes  
Not applicable
12. Quasi-reorganization (dollar impact)  
Not applicable
13. Quasi-reorganization (effective date)  
Not applicable

### **Note 14 - Contingencies**

- A. Contingent Commitments

Refer to Note 10E.

## NOTES TO FINANCIAL STATEMENTS

### B. Assessments

The Company is subject to guaranty fund and other assessments by the states in which it writes business. Guaranty fund assessments and premium-based assessments are presumed probable when the premium on which the assessments are expected to be based are written. In the case of loss-based assessments, the event that obligates the entity is an entity incurring the losses on which the assessments are expected to be based.

The Company has no net guaranty fund or other assessment liabilities to report. Refer to Note 26.

### C. Gain Contingencies

Not applicable

### D. Claims related extra contractual obligations and bad faith losses stemming from lawsuits

The Company paid the following amounts in the reporting period to settle claims related extra contractual obligations or bad faith claims stemming from lawsuits.

	Direct
Claims related ECO and bad faith losses paid during the reporting period	\$50,000

Number of claims where amounts were paid to settle claims related extra contractual obligations or bad faith claims resulting from lawsuits during the reporting period.

( a ) 0-25 Claims	( b ) 26-50 Claims	( c ) 51-100 Claims	( d ) 101-500 Claims	( e ) More than 500 Claims
X				

Indicate whether claim count information is disclosed per claim or per claimant.

( f ) Per Claim [ X ]                      ( g ) Per Claimant [ ]

### E. Product Warranties

The Company does not write product warranty business.

### F. All Other Contingencies

Lawsuits arise against the Company in the normal course of business. Contingent liabilities arising from litigation, income taxes, and other matters are not considered material in relation to the financial position of the Company.

As disclosed in Note 9 F, the Company is a member of a controlled group for federal income tax purposes, and that group includes LMGI. LMGI is the plan sponsor of the Liberty Mutual Retirement Benefit Plan, a qualified plan under federal law. Pursuant to federal law, if LMGI has not made the minimum required contributions with respect to the Liberty Mutual Retirement Benefit Plan, the Company, jointly and severally with all other members of the controlled group, would be contingently liable to make such contributions.

The Company routinely assesses the collectability of its premium receivable balances. The Company does not believe the amounts in excess of non-admitted amounts are material.

### **Note 15 - Leases**

#### A. Lessee Leasing Arrangements

The Company has no net lease obligations. Refer to Note 26.

#### B. Leasing as a Significant Part of Lessor's Business Activities

Leasing is not a significant part of the Company's business activities.

### **Note 16 - Information About Financial Instruments with Off-Balance Sheet Risk and Financial Instruments with Concentrations of Credit Risk**

The Company is not exposed to financial instruments with off-balance sheet risk or concentration of credit risk.

### **Note 17 - Sale, Transfer and Servicing of Financial Assets and Extinguishments of Liabilities**

#### A. Transfers of Receivables Reported as Sales

The Company did not have any transfers of receivables reported as sales during the year.

#### B. Transfers and Servicing of Financial Assets

The Company participates in a Securities Lending Program to generate additional income, whereby certain fixed income and mortgage backed securities are loaned for a period of time from the Company's portfolio to qualifying third parties, via a lending agent. The Company does not participate in term loans; therefore, the Company does not have contractual collateral transactions that extend beyond one year from the reporting date. Borrowers of these securities provide collateral

## NOTES TO FINANCIAL STATEMENTS

equal to or in excess of 102% of the market value of the loaned securities. Acceptable collateral may be in the form of cash or U.S. Government securities, such as Treasuries and Agency Bonds. The market value of the loaned securities is monitored and additional collateral is obtained if the market value of the collateral falls below 102% of the market value of the loaned securities. Additionally, the lending agent indemnifies the Company against borrower defaults. Cash collateral is carried as an asset with an offsetting liability on the balance sheet, as the collateral is unrestricted and the Company can exercise discretion as to how the collateral is invested. The loaned securities remain a recorded asset of the Company.

At December 31, 2013 the total fair value of securities on loan was \$955,771, with corresponding collateral value of \$974,927 of which \$424,116 represents cash collateral that was reinvested.

C. Wash Sales

- 1) The Company did not have any wash sale transactions during the year.
- 2) Not applicable.

**Note 18 - Gain or Loss from Uninsured Accident and Health Plans and the Uninsured Portion of Partially Insured Plans**

A. Administrative Services Only (ASO) Plans

Not applicable

B. Administrative Services Contract (ASC) Plans

Not applicable

C. Medicare or Other Similarly Structured Cost Based Reimbursement Contracts

Not applicable

**Note 19 - Direct Premium Written/Produced by Managing General Agents/Third Party Administrators**

The Company has no direct premiums written or produced through managing general agents or third party administrators.

**Note 20 - Fair Value Measurements**

A. Inputs Used for Assets and Liabilities Measured at Fair Value

Pursuant to the guidance in SSAP No. 100, *Fair Value Measurements*, the Company carries no assets or liabilities on its balance sheet measured at fair value.

B. Other Fair Value Disclosures

Not applicable

C. Aggregate Fair Value of All Financial Instruments

Type of Financial Instrument	Aggregate Fair Value	Admitted Assets	(Level 1)	(Level 2)	(Level 3)	Not Practicable (Carrying Value)
Cash, Cash Equivalents, and Short Term	\$3,750	\$3,750	\$3,750	\$ -	\$ -	\$ -
Bonds	17,525,313	17,356,678	10,645,253	6,880,060	-	-
Preferred Stock	-	-	-	-	-	-
Common Stock	-	-	-	-	-	-
Securities Lending	424,116	424,116	-	424,116	-	-
Mortgage Loans	-	-	-	-	-	-
Surplus Notes	-	-	-	-	-	-
Total	\$17,953,179	\$17,784,544	\$10,649,003	\$7,304,176	\$ -	\$ -

D. Not Practicable to Estimate Fair Value

Not applicable

**Note 21 - Other Items**

A. Extraordinary Items

The Company has no extraordinary items to report.

B. Troubled Debt Restructuring: Debtors

Not applicable

## NOTES TO FINANCIAL STATEMENTS

### C. Other Disclosures

- 1) Assets in the amount of \$5,925,257 and \$5,972,736 as of December 31, 2013 and 2012, respectively, were on deposit with government authorities or trustees as required by law.

- 2) Interrogatory 6.1

The Company cedes 100% of its business to Liberty Mutual Insurance Company, the lead company in the Liberty Mutual Pool. Liberty Mutual Insurance Company purchases external catastrophe reinsurance coverage.

Interrogatory 6.2

The Company cedes 100% of its business to Liberty Mutual Insurance Company, the lead company in the Liberty Mutual Pool. Liberty Mutual Insurance Company purchases external catastrophe reinsurance coverage.

Interrogatory 6.3

The Company cedes 100% of its business to Liberty Mutual Insurance Company, the lead company in the Liberty Mutual Pool. Liberty Mutual Insurance Company purchases external catastrophe reinsurance coverage.

### D. Business Interruption Insurance Recoveries

The Company does not purchase business interruption coverage.

### E. State Transferable and Non-transferable Tax Credits

The Company does not hold state transferable and/or non-transferable tax credits.

### F. Subprime-Mortgage-Related Risk Exposure

1. The Company has not purchased securities characterized by the market as subprime. The Company looks at such factors as average FICO scores, loan to value ratios, and levels of documentation when evaluating securities. The Company's only exposure to subprime was inherited through acquisition of collateral assets at the termination of a securities lending agreement in 2008. In 2013, the Company transferred its subprime assets to settle intercompany transactions, realizing an additional loss of \$3,879.
2. The Company does not have any direct exposure through investments in subprime mortgage loans.
3. The Company does not have direct exposure through their investment in residential mortgage-backed securities.
4. The Company does not have any underwriting exposure to sub-prime mortgage risk.

### G. Offsetting and Netting of Assets and Liabilities

Not applicable.

### H. Joint and Several Liabilities

The Company is not a participant in any joint and several liability arrangements.

### **Note 22 - Events Subsequent**

- A. The Company evaluated subsequent events through February 20, 2014, the date the financial statements were available to be issued.

There were no events subsequent to December 31, 2013 that would require disclosure.

### **Note 23- Reinsurance**

#### A. Unsecured Reinsurance Recoverable

Excluding amounts arising pursuant to the Intercompany Reinsurance Agreement, as described in Note 26, there are no unsecured reinsurance recoverables with an individual reinsurer which exceed 3% of policyholder's surplus.

#### B. Reinsurance Recoverable in Dispute

There are no reinsurance recoverables in dispute from an individual reinsurer which exceeds 5% of the Company's surplus. In addition, the aggregate reinsurance recoverables in dispute do not exceed 10% of the Company's surplus.

#### C. Reinsurance Assumed & Ceded

1. The following table sets forth the maximum return premium and commission equity due the reinsurers or the Company if all of the Company's assumed and ceded reinsurance were canceled as of December 31, 2013.

## NOTES TO FINANCIAL STATEMENTS

	Assumed Reinsurance		Ceded Reinsurance		Net	
	Premium Reserve	Commission Equity	Premium Reserve	Commission Equity	Premium Reserve	Commission Equity
a. Affiliates	\$ -	\$ -	\$37,719,063	\$5,657,859	\$(37,719,063)	\$(5,657,859)
b. All Other	-	-	-	-	-	-
c. TOTAL	\$ -	\$ -	\$37,719,063	\$5,657,859	\$(37,719,063)	\$(5,657,859)
d. Direct Unearned Premium Reserve	\$37,719,063					

2. The Company has no contingent commissions, sliding scale, or other profit sharing commissions for direct, assumed or ceded business.

3. The Company does not use protected cells as an alternative to traditional reinsurance.

**D. Uncollectible Reinsurance**

The Company did not write off any uncollectible balances in the current year.

**E. Commutation of Ceded Reinsurance**

The Company did not commute any reinsurance treaties in the current year.

**F. Retroactive Reinsurance**

The Company does not have any retroactive reinsurance agreements.

**G. Reinsurance Accounted for as a Deposit**

The Company has not entered into any reinsurance agreements that have been accounted for as deposits as of December 31, 2013.

**H. Disclosures for the Transfer of Property and Casualty Run-off Agreements**

The Company has not entered into any agreements which have been approved by their domiciliary regulator and have qualified pursuant to SSAP No. 62R, *Property and Casualty Reinsurance* to receive P&C Run-off Accounting Treatment.

**I. Certified Reinsurers Downgraded or Status Subject to Revocation**

The Company does not transact business with Certified Reinsurers.

**Note 24 - Retrospectively Rated Contracts and Contracts Subject to Redetermination**

The Company does not have net accrued retrospective premiums. Refer to Note 26.

**Note 25 - Changes in Incurred Losses and Loss Adjustment Expenses**

The Company has no net exposure to changes in incurred losses and loss adjustment expenses. Refer to Note 26.

**Note 26 - Intercompany Pooling Arrangements**

The Company is a member of the Liberty Mutual Second Amended and Restated Inercompany Reinsurance Agreement consisting of the following affiliated companies:

		NAIC Company Number	Pooling Percentage	Line of Business
Lead				
Company:	Liberty Mutual Insurance Company ("LMIC")	23043	50.00%	All Lines
Affiliated	Peerless Insurance Company ("PIC")	24198	20.00%	All Lines
Pool	Employers Insurance Company of Wausau ("EICOW")	21458	8.00%	All Lines
Companies:	Liberty Mutual Fire Insurance Company ("LMFIC")	23035	8.00%	All Lines
	The Ohio Casualty Insurance Company ("OCIC")	24074	8.00%	All Lines
	Safeco Insurance Company of America ("SICOA")	24740	6.00%	All Lines
	American Economy Insurance Company ("AEIC")	19690	0.00%	All Lines
	America First Insurance Company ("AFIC")	12696	0.00%	All Lines
	America Fire and Casualty Company ("AFCIC")	24066	0.00%	All Lines
	America First Lloyd's Insurance Company ("AFLIC")	11526	0.00%	All Lines
	American States Insurance Company ("ASIC")	19704	0.00%	All Lines
	American States Insurance Company of Texas ("ASICT")	19712	0.00%	All Lines
	American States Lloyd's Insurance Company ("ASLCO")	31933	0.00%	All Lines
	American States Preferred Insurance Company ("ASPCO")	37214	0.00%	All Lines
	Colorado Casualty Insurance Company ("CCIC")	41785	0.00%	All Lines

## NOTES TO FINANCIAL STATEMENTS

	Consolidated Insurance Company (“CIC”)	22640	0.00%	All Lines
	Excelsior Insurance Company (“EIC”)	11045	0.00%	All Lines
	First National Insurance Company of America (“FNICA”)	24724	0.00%	All Lines
	The First Liberty Insurance Corporation (“FST”)	33588	0.00%	All Lines
	General Insurance Company of America (“GICA”)	24732	0.00%	All Lines
	Golden Eagle Insurance Corporation (“GEIC”)	10836	0.00%	All Lines
	Hawkeye-Security Insurance Company (“HSIC”)	36919	0.00%	All Lines
	Insurance Company of Illinois (“ICIL”)	26700	0.00%	All Lines
	Indiana Insurance Company (“IIC”)	22659	0.00%	All Lines
	Liberty Insurance Corporation (“LIC”)	42404	0.00%	All Lines
	Liberty Insurance Underwriters, Inc. (“LIU”)	19917	0.00%	All Lines
	Liberty County Mutual Insurance Company (“LCMIC”)	19544	0.00%	All Lines
	LM General Insurance Company (“LMGIC”)	36447	0.00%	All Lines
	Liberty Lloyd’s of Texas Insurance Company (“LLOT”)	11041	0.00%	All Lines
	LM Insurance Corporation (“LMC”)	33600	0.00%	All Lines
	Liberty Mutual Mid-Atlantic Insurance Company (“LMMAIC”)	14486	0.00%	All Lines
	Liberty Mutual Personal Insurance Company (“LMPICO”)	12484	0.00%	All Lines
	Liberty Northwest Insurance Corporation (“LNW”)	41939	0.00%	All Lines
	Liberty Personal Insurance Company (LPIC”)	11746	0.00%	All Lines
	Liberty Surplus Insurance Corporation (“LSI”)	10725	0.00%	All Lines
	Mid-American Fire & Casualty Company (“MAFCC”)	23507	0.00%	All Lines
	Montgomery Mutual Insurance Company (“MMIC”)	14613	0.00%	All Lines
	The Midwestern Indemnity Company (“MWIC”)	23515	0.00%	All Lines
	National Insurance Association (“NIA”)	27944	0.00%	All Lines
	The Netherlands Insurance Company (“NIC”)	24171	0.00%	All Lines
	North Pacific Insurance Company (“NPIC”)	23892	0.00%	All Lines
	Ohio Security Insurance Company (“OSIC”)	24082	0.00%	All Lines
	Oregon Automobile Insurance Company (“OAIC”)	23922	0.00%	All Lines
	Peerless Indemnity Insurance Company (“PIIC”)	18333	0.00%	All Lines
	Safeco Insurance Company of Illinois (“SICIL”)	39012	0.00%	All Lines
	Safeco Insurance Company of Indiana (“SICIN”)	11215	0.00%	All Lines
	Safeco Insurance Company of Oregon (“SICOR”)	11071	0.00%	All Lines
	Safeco Lloyds Insurance Company (“SLICO”)	11070	0.00%	All Lines
	Safeco National Insurance Company (“SNIC”)	24759	0.00%	All Lines
	Safeco Surplus Lines Insurance Company (“SSLIC”)	11100	0.00%	All Lines
	Wausau Business Insurance Company (“WBIC”)	26069	0.00%	All Lines
	Wausau General Insurance Company (“WGIC”)	26425	0.00%	All Lines
	Wausau Underwriters Insurance Company (“WUIC”)	26042	0.00%	All Lines
	West American Insurance Company (“WAIC”)	44393	0.00%	All Lines
			100.00%	
100% Quota Share	Bridgefield Employers Insurance Company (“BEIC”)	10701	0.00%	All Lines
Affiliated Companies:	Bridgefield Casualty Insurance Company (“BCIC”)	10335	0.00%	All Lines
	LM Property and Casualty Insurance Company (“LMPAC”)	32352	0.00%	All Lines

Under the terms of the Reinsurance Agreements, the sequence of transactions is as follows:

- (a) Except for WBIC, WGIC and WUIC, each Affiliated Pool Company cedes its underwriting activity to the Lead Company. WBIC, WGIC and WUIC cede 100% of its direct underwriting activity to EICOW.
- (b) After recording the assumed affiliate transactions noted above, the Lead Company records 100% of its external assumed and ceded reinsurance activity.
- (c) The Lead Company’s remaining underwriting activity, after processing all internal and external reinsurance, is retroceded to the pool members in accordance with each company’s pool participation percentage, as noted above.
- (d) There were no members that are parties to reinsurance agreements with non-affiliated reinsurers covering business subject to the pooling agreement and have a contractual right of direct recovery from the non-affiliated reinsurer per the terms of such reinsurance agreements.
- (e) There were no discrepancies between entries regarding pooled business on the assumed and ceded reinsurance schedules of the Lead Company and corresponding entries on the assumed and ceded reinsurance schedules of other pooled participants.
- (f) The write-off of uncollectible reinsurance is pooled and the provision for reinsurance is recognized by the entity placing the outbound external reinsurance.

## NOTES TO FINANCIAL STATEMENTS

- (g) Amounts due (to)/from affiliated entities participating in the Liberty Mutual Second Amended and Restated Intercompany Reinsurance Agreement as of December 31, 2013:

Affiliate:	Amount:
Liberty Mutual Insurance Company	\$(1,248,091)

Pursuant to the approval of the appropriate state insurance departments, effective January 1, 2013, the participants of the Peerless Amended and Restated Reinsurance Pooling Agreement (the PIC Pool) were added to the Liberty Mutual Intercompany Reinsurance Agreement (Liberty Pool). The Liberty Mutual Intercompany Reinsurance Agreement was renamed the Liberty Mutual Second Amended and Restated Intercompany Reinsurance Agreement. Also effective January 1, 2013 the Peerless Amended and Restated Reinsurance Pooling Agreement was terminated.

Effective January 1, 2013, Liberty County Mutual Insurance Company cancelled its 100% Quota Share Reinsurance Agreement with Liberty Mutual Insurance Company, the lead company in the Liberty Pool and became a participant in the Liberty Pool.

Effective January 1, 2013, Liberty Northwest Insurance Corporation, North Pacific Insurance Company, Oregon Automobile Insurance Company and Liberty Mutual Mid-Atlantic Insurance Company cancelled its 100% Quota Share Reinsurance Agreements with Peerless Insurance Company, the Lead Company in the PIC Pool, and became participants in the Liberty Pool.

### **Note 27 - Structured Settlements**

- A. The Company has no net exposure to contingent liabilities from the purchase of annuities. Refer to Note 26.
- B. Not applicable

### **Note 28 - Health Care Receivables**

Not applicable

### **Note 29 - Participating Policies**

Not applicable

### **Note 30 - Premium Deficiency Reserves**

1. Liability carried for premium deficiency reserves	\$ -
2. Date of the most recent evaluation of this liability	12/31/2013
3. Was anticipated investment income utilized in the calculation?	Yes

### **Note 31 - High Dollar Deductible Policies**

Not applicable

### **Note 32 - Discounting of Liabilities for Unpaid Losses and Unpaid Loss Adjustment Expenses**

The Company has no net loss and loss adjustment expense reserves. Refer to Note 26.

### **Note 33 - Asbestos/Environmental Reserves**

The Company has no net exposure to asbestos and environmental claims. Refer to Note 26.

### **Note 34- Subscriber Savings Accounts**

The Company is not a reciprocal insurance company.

### **Note 35 - Multiple Peril Crop Insurance**

Not applicable

### **Note 36 - Financial Guaranty Insurance**

Not applicable

# GENERAL INTERROGATORIES

## PART 1 – COMMON INTERROGATORIES

### GENERAL

- 1.1 Is the reporting entity a member of an Insurance Holding Company System consisting of two or more affiliated persons, one or more of which is an insurer? Yes  No
- If yes, complete Schedule Y, Parts 1, 1A and 2.
- 1.2 If yes, did the reporting entity register and file with its domiciliary State Insurance Commissioner, Director or Superintendent or with such regulatory official of the state of domicile of the principal insurer in the Holding Company System, a registration statement providing disclosure substantially similar to the standards adopted by the National Association of Insurance Commissioners (NAIC) in its Model Insurance Holding Company System Regulatory Act and model regulations pertaining thereto, or is the reporting entity subject to standards and disclosure requirements substantially similar to those required by such Act and regulations? Yes  No  N/A
- 1.3 State Regulating? Indiana
- 2.1 Has any change been made during the year of this statement in the charter, by-laws, articles of incorporation, or deed of settlement of the reporting entity? Yes  No
- 2.2 If yes, date of change:
- 3.1 State as of what date the latest financial examination of the reporting entity was made or is being made. 12/31/2009
- 3.2 State the as of date that the latest financial examination report became available from either the state of domicile or the reporting entity. This date should be the date of the examined balance sheet and not the date the report was completed or released. 12/31/2009
- 3.3 State as of what date the latest financial examination report became available to other states or the public from either the state of domicile or the reporting entity. This is the release date or completion date of the examination report and not the date of the examination (balance sheet date). 06/29/2011
- 3.4 By what department or departments?  
 Indiana Department of Insurance  
 .....  
 .....  
 .....
- 3.5 Have all financial statement adjustments within the latest financial examination report been accounted for in a subsequent financial statement filed with departments? Yes  No  N/A
- 3.6 Have all of the recommendations within the latest financial examination report been complied with? Yes  No  N/A
- 4.1 During the period covered by this statement, did any agent, broker, sales representative, non-affiliated sales/service organization or any combination thereof under common control (other than salaried employees of the reporting entity) receive credit or commissions for or control a substantial part (more than 20 percent of any major line of business measured on direct premiums) of:
- 4.11 sales of new business? Yes  No
- 4.12 renewals? Yes  No
- 4.2 During the period covered by this statement, did any sales/service organization owned in whole or in part by the reporting entity or an affiliate, receive credit or commissions for or control a substantial part (more than 20 percent of any major line of business measured on direct premiums) of:
- 4.21 sales of new business? Yes  No
- 4.22 renewals? Yes  No
- 5.1 Has the reporting entity been a party to a merger or consolidation during the period covered by this statement? Yes  No
- 5.2 If yes, provide the name of the entity, NAIC Company Code, and state of domicile (use two letter state abbreviation) for any entity that has ceased to exist as a result of the merger or consolidation.
- | 1<br>Name of Entity | 2<br>NAIC Company Code | 3<br>State of Domicile |
|---------------------|------------------------|------------------------|
|                     |                        |                        |
|                     |                        |                        |
- 6.1 Has the reporting entity had any Certificates of Authority, licenses or registrations (including corporate registration, if applicable) suspended or revoked by any governmental entity during the reporting period? Yes  No



## GENERAL INTERROGATORIES

6.2 If yes, give full information:

.....  
 .....  
 .....

7.1 Does any foreign (non-United States) person or entity directly or indirectly control 10% or more of the reporting entity? Yes [ ] No [ X ]

7.2 If yes,

7.21 State the percentage of foreign control. \_\_\_\_\_ 0.00 %  
 7.22 State the nationality(s) of the foreign person(s) or entity(s); or if the entity is a mutual or reciprocal, the nationality of its manager or attorney-in-fact and identify the type of entity(s) (e.g., individual, corporation, government, manager or attorney-in-fact).

1 Nationality	2 Type of Entity
.....	.....

8.1 Is the company a subsidiary of a bank holding company regulated by the Federal Reserve Board? Yes [ ] No [ X ]

8.2 If response to 8.1 is yes, please identify the name of the bank holding company.

.....  
 .....  
 .....

8.3 Is the company affiliated with one or more banks, thrifts or securities firms? Yes [ ] No [ X ]

8.4 If response to 8.3 is yes, please provide the names and locations (city and state of the main office) of any affiliates regulated by a federal financial regulatory services agency [i.e., the Federal Reserve Board (FRB), the Office of the Comptroller of the Currency (OCC), the Federal Deposit Insurance Corporation (FDIC) and the Securities Exchange Commission (SEC)] and identify the affiliate's primary federal regulator.

1 Affiliate Name	2 Location (City, State)	3 FRB	4 OCC	5 FDIC	6 SEC
.....	.....	.....	.....	.....	.....

9. What is the name and address of the independent certified public accountant or accounting firm retained to conduct the annual audit?

Ernst & Young, LLP  
 200 Clarendon Street  
 Boston, MA 02116  
 .....

10.1 Has the insurer been granted any exemptions to the prohibited non-audit services provided by the certified independent public accountant requirements as allowed in Section 7H of the Annual Financial Reporting Model Regulation (Model Audit Rule), or substantially similar state law or regulation? Yes [ ] No [ X ]

10.2 If response to 10.1 is yes, provide information related to this exemption:

.....  
 .....  
 .....

10.3 Has the insurer been granted any exemptions related to the other requirements of the Annual Financial Reporting Model Regulation as allowed for in Section 17A of the Model Regulation, or substantially similar state law or regulation? Yes [ ] No [ X ]

10.4 If response to 10.3 is yes, provide information related to this exemption:

.....  
 .....  
 .....

## GENERAL INTERROGATORIES

10.5 Has the reporting entity established an Audit Committee in compliance with the domiciliary state insurance laws? Yes  No  N/A

10.6 If the response to 10.5 is no or n/a, please explain:

.....  
 .....  
 .....

11. What is the name, address and affiliation (officer/employee of the reporting entity or actuary/consultant associated with an actuarial consulting firm) of the individual providing the statement of actuarial opinion/certification?

Stephanie Neyenhouse FCAS, MAAA  
 175 Berkeley Street, Boston, MA 02116  
 Vice President and Chief Actuary, Liberty Mutual Group Inc.

12.1 Does the reporting entity own any securities of a real estate holding company or otherwise hold real estate indirectly? Yes  No

12.11 Name of real estate holding company

12.12 Number of parcels involved

12.13 Total book/adjusted carrying value

	0
\$	0

12.2 If yes, provide explanation:

.....  
 .....  
 .....

13. FOR UNITED STATES BRANCHES OF ALIEN REPORTING ENTITIES ONLY:

13.1 What changes have been made during the year in the United States manager or the United States trustees of the reporting entity?

.....  
 .....  
 .....

13.2 Does this statement contain all business transacted for the reporting entity through its United States Branch on risks wherever located? Yes  No

13.3 Have there been any changes made to any of the trust indentures during the year? Yes  No

13.4 If answer to (13.3) is yes, has the domiciliary or entry state approved the changes? Yes  No  N/A

14.1 Are the senior officers (principal executive officer, principal financial officer, principal accounting officer or controller, or persons performing similar functions) of the reporting entity subject to a code of ethics, which includes the following standards?

- a. Honest and ethical conduct, including the ethical handling of actual or apparent conflicts of interest between personal and professional relationships;
- b. Full, fair, accurate, timely and understandable disclosure in the periodic reports required to be filed by the reporting entity;
- c. Compliance with applicable governmental laws, rules, and regulations;
- d. The prompt internal reporting of violations to an appropriate person or persons identified in the code; and
- e. Accountability for adherence to the code.

Yes  No

14.11 If the response to 14.1 is no, please explain:

.....  
 .....  
 .....

14.2 Has the code of ethics for senior managers been amended? Yes  No

14.21 If the response to 14.2 is yes, provide information related to amendment(s).

Effective May 6, 2013, Liberty made significant revisions to the format and contents of its Code to make this easier for employees to read and understand. These revisions did not change the core requirements and policies in the Code.

.....  
 .....

## GENERAL INTERROGATORIES

14.3 Have any provisions of the code of ethics been waived for any of the specified officers? Yes [ ] No [X]

14.31 If the response to 14.3 is yes, provide the nature of any waiver(s).

.....

.....

.....

15.1 Is the reporting entity the beneficiary of a Letter of Credit that is unrelated to reinsurance where the issuing or confirming bank is not on the SVO Bank List? Yes [ ] No [X]

15.2 If the response to 15.1 is yes, indicate the American Bankers Association (ABA) Routing Number and the name of the issuing or confirming bank of the Letter of Credit and describe the circumstances in which the Letter of Credit is triggered.

1 American Bankers Association (ABA) Routing Number	2 Issuing or Confirming Bank Name	3 Circumstances That Can Trigger the Letter of Credit	4 Amount
0			0
0			0
0			0

## BOARD OF DIRECTORS

16. Is the purchase or sale of all investments of the reporting entity passed upon either by the board of directors or a subordinate thereof? Yes [X] No [ ]

17. Does the reporting entity keep a complete permanent record of the proceedings of its board of directors and all subordinate committees thereof? Yes [X] No [ ]

18. Has the reporting entity an established procedure for disclosure to its board of directors or trustees of any material interest or affiliation on the part of any of its officers, directors, trustees or responsible employees that is in conflict or is likely to conflict with the official duties of such person? Yes [X] No [ ]

## FINANCIAL

19. Has this statement been prepared using a basis of accounting other than Statutory Accounting Principles (e.g., Generally Accepted Accounting Principles)? Yes [ ] No [X]

20.1 Total amount loaned during the year (inclusive of Separate Accounts, exclusive of policy loans):

20.11 To directors or other officers		\$	0
20.12 To stockholders not officers		\$	0
20.13 Trustees, supreme or grand (Fraternal only)		\$	0

20.2 Total amount of loans outstanding at the end of year (inclusive of Separate Accounts, exclusive of policy loans):

20.21 To directors or other officers		\$	0
20.22 To stockholders not officers		\$	0
20.23 Trustees, supreme or grand (Fraternal only)		\$	0

21.1 Were any assets reported in this statement subject to a contractual obligation to transfer to another party without the liability for such obligation being reported in the statement? Yes [ ] No [X]

21.2 If yes, state the amount thereof at December 31 of the current year:

21.21 Rented from others		\$	0
21.22 Borrowed from others		\$	0
21.23 Leased from others		\$	0
21.24 Other		\$	0

22.1 Does this statement include payments for assessments as described in the Annual Statement Instructions other than guaranty fund or guaranty association assessments? Yes [ ] No [X]

22.2 If answer is yes:

22.21 Amount paid as losses or risk adjustment		\$	0
22.22 Amount paid as expenses		\$	0
22.23 Other amounts paid		\$	0

## GENERAL INTERROGATORIES

23.1 Does the reporting entity report any amounts due from parent, subsidiaries or affiliates on Page 2 of this statement? Yes  No

23.2 If yes, indicate any amounts receivable from parent included in the Page 2 amount: \$ 0

### INVESTMENT

24.01 Were all the stocks, bonds and other securities owned December 31 of current year, over which the reporting entity has exclusive control, in the actual possession of the reporting entity on said date? (other than securities lending programs addressed in 24.03) Yes  No

24.02 If no, give full and complete information, relating thereto:  
 .....  
 .....  
 .....

24.03 For security lending programs, provide a description of the program including value for collateral and amount of loaned securities, and whether collateral is carried on or off-balance sheet. (an alternative is to reference Note 17 where this information is also provided):  
 Please reference Note 17B .....  
 .....  
 .....

24.04 Does the company's security lending program meet the requirements for a conforming program as outlined in the Risk-Based Capital Instructions? Yes  No  N/A

24.05 If answer to 24.04 is yes, report amount of collateral for conforming programs. \$ 974,927

24.06 If answer to 24.04 is no, report amount of collateral for other programs. \$ 0

24.07 Does your securities lending program require 102% (domestic securities) and 105% (foreign securities) from the counterparty at the outset of the contract? Yes  No  N/A

24.08 Does the reporting entity non-admit when the collateral received from the counterparty falls below 100%? Yes  No  N/A

24.09 Does the reporting entity or the reporting entity's securities lending agent utilize the Master Securities Lending Agreement (MSLA) to conduct securities lending? Yes  No  N/A

24.10 For the reporting entity's security lending program, state the amount of the following as of December 31 of the current year:

24.101	Total fair value of reinvested collateral assets reported on Schedule DL, Parts 1 and 2	\$ <u>424,116</u>
24.102	Total book adjusted/carrying value of reinvested collateral assets reported on Schedule DL, Parts 1 and 2	\$ <u>424,116</u>
24.103	Total payable for securities lending reported on the liability page	\$ <u>424,116</u>

25.1 Were any of the stocks, bonds or other assets of the reporting entity owned at December 31 of the current year not exclusively under the control of the reporting entity or has the reporting entity sold or transferred any assets subject to a put option contract that is currently in force? (Exclude securities subject to Interrogatory 21.1 and 24.03). Yes  No

25.2 If yes, state the amount thereof at December 31 of the current year:

	25.21 Subject to repurchase agreements	\$ <u>0</u>
	25.22 Subject to reverse repurchase agreements	\$ <u>0</u>
	25.23 Subject to dollar repurchase agreements	\$ <u>0</u>
	25.24 Subject to reverse dollar repurchase agreements	\$ <u>0</u>
	25.25 Pledged as collateral	\$ <u>0</u>
	25.26 Placed under option agreements	\$ <u>0</u>
	25.27 Letter stock or securities restricted as to sale	\$ <u>0</u>
	25.28 On deposit with state or other regulatory body	\$ <u>6,825,257</u>
	25.29 Other	\$ <u>0</u>

25.3 For category (25.27) provide the following:

1 Nature of Restriction	2 Description	3 Amount
.....	.....	0
.....	.....	0
.....	.....	0

## GENERAL INTERROGATORIES

26.1 Does the reporting entity have any hedging transactions reported on Schedule DB? Yes [ ] No [ X ]

26.2 If yes, has a comprehensive description of the hedging program been made available to the domiciliary state?  
If no, attach a description with this statement. Yes [ ] No [ ] N/A [ X ]

27.1 Were any preferred stocks or bonds owned as of December 31 of the current year mandatorily convertible into equity, or, at the option of the issuer, convertible into equity? Yes [ ] No [ X ]

27.2 If yes, state the amount thereof at December 31 of the current year. \$ \_\_\_\_\_ 0

28. Excluding items in Schedule E - Part 3 - Special Deposits, real estate, mortgage loans and investments held physically in the reporting entity's offices, vaults or safety deposit boxes, were all stocks, bonds and other securities, owned throughout the current year held pursuant to a custodial agreement with a qualified bank or trust company in accordance with Section 1, III - General Examination Considerations, F. Outsourcing of Critical Functions, Custodial or Safekeeping Agreements of the NAIC Financial Condition Examiners Handbook? Yes [ X ] No [ ]

28.01 For agreements that comply with the requirements of the NAIC Financial Condition Examiners Handbook, complete the following:

1 Name of Custodian(s)	2 Custodian's Address
JP Morgan Chase	1 Chase Manhattan Plaza, New York, NY 10005
Bank of New York Mellon	601 Travis Street, Houston, TX 77002

28.02 For all agreements that do not comply with the requirements of the NAIC Financial Condition Examiners Handbook, provide the name, location and a complete explanation:

1 Name(s)	2 Location(s)	3 Complete Explanation(s)

28.03 Have there been any changes, including name changes, in the custodian(s) identified in 28.01 during the current year? Yes [ ] No [ X ]

28.04 If yes, give full and complete information relating thereto:

1 Old Custodian	2 New Custodian	3 Date of Change	4 Reason

28.05 Identify all investment advisors, broker/dealers or individuals acting on behalf of broker/dealers that have access to the investment accounts, handle securities and have authority to make investments on behalf of the reporting entity:

1 Central Registration Depository Number(s)	2 Name	3 Address
N/A	Liberty Mutual Group Asset Managemen	175 Berkeley Street, Boston, MA 02116

29.1 Does the reporting entity have any diversified mutual funds reported in Schedule D – Part 2 (diversified according to the Securities and Exchange Commission (SEC) in the Investment Company Act of 1940 [Section 5 (b) (1)])? Yes [ ] No [ X ]

29.2 If yes, complete the following schedule:

1 CUSIP #	2 Name of Mutual Fund	3 Book/Adjusted Carrying Value
		0
		0
		0
29.2999 TOTAL		0

## GENERAL INTERROGATORIES

29.3 For each mutual fund listed in the table above, complete the following schedule:

1 Name of Mutual Fund (from above table)	2 Name of Significant Holding of the Mutual Fund	3 Amount of Mutual Fund's Book/Adjusted Carrying Value Attributable to the Holding	4 Date of Valuation
.....	.....	0	.....
.....	.....	0	.....
.....	.....	0	.....

30. Provide the following information for all short-term and long-term bonds and all preferred stocks. Do not substitute amortized value or statement value for fair value.

	1 Statement (Admitted) Value	2 Fair Value	3 Excess of Statement over Fair Value (-), or Fair Value over Statement (+)
30.1 Bonds	17,530,547	17,699,182	168,635
30.2 Preferred stocks	0	0	0
30.3 Totals	17,530,547	17,699,182	168,635

30.4 Describe the sources or methods utilized in determining the fair values:

The primary source is published unit prices from the NAIC Securities Valuation Office. The secondary source is the pricing vendor, Interactive Data Corporation, followed by backfill from Bloomberg and Markit. Lastly, management determines fair value based

.....

.....

.....

31.1 Was the rate used to calculate fair value determined by a broker or custodian for any of the securities in Schedule D? Yes [ ] No [ X ]

31.2 If the answer to 31.1 is yes, does the reporting entity have a copy of the broker's or custodian's pricing policy (hard copy or electronic copy) for all brokers or custodians used as a pricing source? Yes [ ] No [ ]

31.3 If the answer to 31.2 is no, describe the reporting entity's process for determining a reliable pricing source for purposes of disclosure of fair value for Schedule D:

.....

.....

.....

.....

32.1 Have all the filing requirements of the Purposes and Procedures Manual of the NAIC Securities Valuation Office been followed? Yes [ X ] No [ ]

32.2 If no, list exceptions:

.....

.....

.....

### OTHER

33.1 Amount of payments to trade associations, service organizations and statistical or rating bureaus, if any? \$ \_\_\_\_\_ 0

33.2 List the name of the organization and the amount paid if any such payment represented 25% or more of the total payments to trade associations, service organizations and statistical or rating bureaus during the period covered by this statement.

1 Name	2 Amount Paid
.....	\$ ..... 0
.....	\$ ..... 0
.....	\$ ..... 0

34.1 Amount of payments for legal expenses, if any? \$ \_\_\_\_\_ 0

## GENERAL INTERROGATORIES

34.2 List the name of the firm and the amount paid if any such payment represented 25% or more of the total payments for legal expenses during the period covered by this statement.

1 Name	2 Amount Paid
.....	\$ ..... 0
.....	\$ ..... 0
.....	\$ ..... 0

35.1 Amount of payments for expenditures in connection with matters before legislative bodies, officers or departments of government, if any?

\$ \_\_\_\_\_ 0

35.2 List the name of the firm and the amount paid if any such payment represented 25% or more of the total payment expenditures in connection with matters before legislative bodies, officers or departments of government during the period covered by this statement.

1 Name	2 Amount Paid
.....	\$ ..... 0
.....	\$ ..... 0
.....	\$ ..... 0

## GENERAL INTERROGATORIES

### PART 2 – PROPERTY & CASUALTY INTERROGATORIES

1.1 Does the reporting entity have any direct Medicare Supplement Insurance in force? Yes [ ] No [X]

1.2 If yes, indicate premium earned on U.S. business only. \$ 0

1.3 What portion of Item (1.2) is not reported on the Medicare Supplement Insurance Experience Exhibit? \$ 0

1.31 Reason for excluding

.....

.....

.....

1.4 Indicate amount of earned premium attributable to Canadian and/or Other Alien not included in Item (1.2) above. \$ 0

1.5 Indicate total incurred claims on all Medicare Supplement insurance. \$ 0

1.6 Individual policies:

Most current three years:

1.61 Total premium earned \$ 0

1.62 Total incurred claims \$ 0

1.63 Number of covered lives 0

All years prior to most current three years:

1.64 Total premium earned \$ 0

1.65 Total incurred claims \$ 0

1.66 Number of covered lives 0

1.7 Group policies:

Most current three years:

1.71 Total premium earned \$ 0

1.72 Total incurred claims \$ 0

1.73 Number of covered lives 0

All years prior to most current three years:

1.74 Total premium earned \$ 0

1.75 Total incurred claims \$ 0

1.76 Number of covered lives 0

2. Health Test:

	1		2	
	Current Year		Prior Year	
2.1 Premium Numerator	\$ <u>0</u>		\$ <u>0</u>	
2.2 Premium Denominator	\$ <u>0</u>		\$ <u>85,891,428</u>	
2.3 Premium Ratio (2.1/2.2)	<u>0.00</u>		<u>0.00</u>	
2.4 Reserve Numerator	\$ <u>0</u>		\$ <u>403,278</u>	
2.5 Reserve Denominator	\$ <u>0</u>		\$ <u>133,661,007</u>	
2.6 Reserve Ratio (2.4/2.5)	<u>0.00</u>		<u>0.00</u>	

3.1 Does the reporting entity issue both participating and non-participating policies? Yes [ ] No [X]

3.2 If yes, state the amount of calendar year premiums written on:

3.21 Participating policies \$ 0

3.22 Non-participating policies \$ 0

4. For Mutual reporting entities and Reciprocal Exchanges only:

4.1 Does the reporting entity issue assessable policies? Yes [ ] No [X]

4.2 Does the reporting entity issue non-assessable policies? Yes [ ] No [X]

4.3 If assessable policies are issued, what is the extent of the contingent liability of the policyholders? 0 %

4.4 Total amount of assessments paid or ordered to be paid during the year on deposit notes or contingent premiums. \$ 0

5. For Reciprocal Exchanges Only:

5.1 Does the exchange appoint local agents? Yes [ ] No [X]

5.2 If yes, is the commission paid:

5.21 Out of Attorney's-in-fact compensation Yes [ ] No [ ] N/A [X]

5.22 As a direct expense of the exchange Yes [ ] No [ ] N/A [X]

5.3 What expenses of the Exchange are not paid out of the compensation of the Attorney-in-fact?

0

.....

.....

.....

5.4 Has any Attorney-in-fact compensation, contingent on fulfillment of certain conditions, been deferred? Yes [ ] No [X]

5.5 If yes, give full information

.....

.....

.....

6.1 What provision has this reporting entity made to protect itself from an excessive loss in the event of a catastrophe under a workers' compensation contract issued without limit loss:

See Note 21C2

.....

.....

.....



## GENERAL INTERROGATORIES

### PART 2 – PROPERTY & CASUALTY INTERROGATORIES

- 6.2 Describe the method used to estimate this reporting entity's probable maximum insurance loss, and identify the type of insured exposures comprising that probable maximum loss, the locations of concentrations of those exposures and the external resources (such as consulting firms or computer software models), if any, used in the estimation process:  
See Note 21C2
- 6.3 What provision has this reporting entity made (such as a catastrophic reinsurance program) to protect itself from an excessive loss arising from the types and concentrations of insured exposures comprising its probable maximum property insurance loss?  
See Note 21C2
- 6.4 Does the reporting entity carry catastrophe reinsurance protection for at least one reinstatement, in an amount sufficient to cover its estimated probable maximum loss attributable to a single loss event or occurrence? Yes [ ] No [X]
- 6.5 If no, describe any arrangements or mechanisms employed by the reporting entity to supplement its catastrophe reinsurance program or to hedge its exposure to unreinsured catastrophic loss  
The Company cedes 100% of its business to Liberty Mutual Insurance Company, the lead company in the Liberty Mutual Pool. Liberty Mutual Insurance Company purchases external catastrophe reinsurance coverage.
- 7.1 Has the reporting entity reinsured any risk with any other entity under a quota share reinsurance contract that includes a provision that would limit the reinsurer's losses below the stated quota share percentage (e.g., a deductible, a loss ratio corridor, a loss cap, an aggregate limit or any similar provisions)? Yes [ ] No [X]
- 7.2 If yes, indicate the number of reinsurance contracts containing such provisions. \_\_\_\_\_ 0
- 7.3 If yes, does the amount of reinsurance credit taken reflect the reduction in quota share coverage caused by any applicable limiting provision(s)? Yes [ ] No [ ]
- 8.1 Has this reporting entity reinsured any risk with any other entity and agreed to release such entity from liability, in whole or in part, from any loss that may occur on this risk, or portion thereof, reinsured? Yes [ ] No [X]
- 8.2 If yes, give full information
- 9.1 Has the reporting entity ceded any risk under any reinsurance contract (or under multiple contracts with the same reinsurer or its affiliates) for which during the period covered by the statement: (i) it recorded a positive or negative underwriting result greater than 5% of prior year-end surplus as regards policyholders or it reported calendar year written premium ceded or year-end loss and loss expense reserves ceded greater than 5% of prior year-end surplus as regards policyholders; (ii) it accounted for that contract as reinsurance and not as a deposit; and (iii) the contract(s) contain one or more of the following features or other features that would have similar results:  
(a) A contract term longer than two years and the contract is noncancellable by the reporting entity during the contract term;  
(b) A limited or conditional cancellation provision under which cancellation triggers an obligation by the reporting entity, or an affiliate of the reporting entity, to enter into a new reinsurance contract with the reinsurer, or an affiliate of the reinsurer;  
(c) Aggregate stop loss reinsurance coverage;  
(d) A unilateral right by either party (or both parties) to commute the reinsurance contract, whether conditional or not, except for such provisions which are only triggered by a decline in the credit status of the other party;  
(e) A provision permitting reporting of losses, or payment of losses, less frequently than on a quarterly basis (unless there is no activity during the period); or  
(f) Payment schedule, accumulating retentions from multiple years or any features inherently designed to delay timing of the reimbursement to the ceding entity. Yes [ ] No [X]
- 9.2 Has the reporting entity during the period covered by the statement ceded any risk under any reinsurance contract (or under multiple contracts with the same reinsurer or its affiliates), for which, during the period covered by the statement, it recorded a positive or negative underwriting result greater than 5% of prior year-end surplus as regards policyholders or it reported calendar year written premium ceded or year-end loss and loss expense reserves ceded greater than 5% of prior year-end surplus as regards policyholders; excluding cessions to approved pooling arrangements or to captive insurance companies that are directly or indirectly controlling, controlled by, or under common control with (i) one or more unaffiliated policyholders of the reporting entity, or (ii) an association of which one or more unaffiliated policyholders of the reporting entity is a member where:  
(a) The written premium ceded to the reinsurer by the reporting entity or its affiliates represents fifty percent (50%) or more of the entire direct and assumed premium written by the reinsurer based on its most recently available financial statement; or  
(b) Twenty-five percent (25%) or more of the written premium ceded to the reinsurer has been retroceded back to the reporting entity or its affiliates in a separate reinsurance contract. Yes [ ] No [X]
- 9.3 If yes to 9.1 or 9.2, please provide the following information in the Reinsurance Summary Supplemental Filing for General Interrogatory 9:  
(a) The aggregate financial statement impact gross of all such ceded reinsurance contracts on the balance sheet and statement of income;  
(b) A summary of the reinsurance contract terms and indicate whether it applies to the contracts meeting the criteria in 9.1 or 9.2; and  
(c) A brief discussion of management's principle objectives in entering into the reinsurance contract including the economic purpose to be achieved.
- 9.4 Except for transactions meeting the requirements of paragraph 31 of SSAP No. 62R, Property and Casualty Reinsurance, has the reporting entity ceded any risk under any reinsurance contract (or multiple contracts with the same reinsurer or its affiliates) during the period covered by the financial statement, and either:  
(a) Accounted for that contract as reinsurance (either prospective or retroactive) under statutory accounting principles ("SAP") and as a deposit under generally accepted accounting principles ("GAAP"); or  
(b) Accounted for that contract as reinsurance under GAAP and as a deposit under SAP? Yes [ ] No [X]
- 9.5 If yes to 9.4, explain in the Reinsurance Summary Supplemental Filing for General Interrogatory 9 (Section D) why the contract(s) is treated differently for GAAP and SAP.
- 9.6 The reporting entity is exempt from the Reinsurance Attestation Supplement under one or more of the following criteria:  
(a) The entity does not utilize reinsurance; or, Yes [ ] No [X]  
(b) The entity only engages in a 100% quota share contract with an affiliate and the affiliated or lead company has filed an attestation supplement; or Yes [ ] No [X]  
(c) The entity has no external cessions and only participates in an intercompany pool and the affiliated or lead company has filed an attestation supplement. Yes [X] No [ ]

## GENERAL INTERROGATORIES

### PART 2 – PROPERTY & CASUALTY INTERROGATORIES

10. If the reporting entity has assumed risks from another entity, there should be charged on account of such reinsurances a reserve equal to that which the original entity would have been required to charge had it retained the risks. Has this been done? Yes [ ] No [ ] N/A [X]

11.1 Has the reporting entity guaranteed policies issued by any other entity and now in force: Yes [ ] No [X]

11.2 If yes, give full information

.....

.....

.....

12.1 If the reporting entity recorded accrued retrospective premiums on insurance contracts on Line 15.3 of the asset schedule, Page 2, state the amount of corresponding liabilities recorded for:

12.11 Unpaid losses	\$ <u>0</u>
12.12 Unpaid underwriting expenses (including loss adjustment expenses)	\$ <u>0</u>

12.2 Of the amount on Line 15.3, Page 2, state the amount that is secured by letters of credit, collateral and other funds? \$ 0

12.3 If the reporting entity underwrites commercial insurance risks, such as workers' compensation, are premium notes or promissory notes accepted from its insureds covering unpaid premiums and/or unpaid losses? Yes [ ] No [ ] N/A [X]

12.4 If yes, provide the range of interest rates charged under such notes during the period covered by this statement:

12.41 From	<u>0.00</u> %
12.42 To	<u>0.00</u> %

12.5 Are letters of credit or collateral and other funds received from insureds being utilized by the reporting entity to secure premium notes or promissory notes taken by a reporting entity or to secure any of the reporting entity's reported direct unpaid loss reserves, including unpaid losses under loss deductible features of commercial policies? Yes [ ] No [X]

12.6 If yes, state the amount thereof at December 31 of current year:

12.61 Letters of Credit	\$ <u>0</u>
12.62 Collateral and other funds	\$ <u>0</u>

13.1 Largest net aggregate amount insured in any one risk (excluding workers' compensation): \$ 0

13.2 Does any reinsurance contract considered in the calculation of this amount include an aggregate limit of recovery without also including a reinstatement provision? Yes [ ] No [X]

13.3 State the number of reinsurance contracts (excluding individual facultative risk certificates, but including facultative programs, automatic facilities or facultative obligatory contracts) considered in the calculation of the amount. 1

14.1 Is the company a cedant in a multiple cedant reinsurance contract? Yes [ ] No [X]

14.2 If yes, please describe the method of allocating and recording reinsurance among the cedants:

.....

.....

.....

14.3 If the answer to 14.1 is yes, are the methods described in item 14.2 entirely contained in the respective multiple cedant reinsurance contracts? Yes [ ] No [ ]

14.4 If the answer to 14.3 is no, are all the methods described in 14.2 entirely contained in written agreements? Yes [ ] No [ ]

14.5 If the answer to 14.4 is no, please explain:

.....

.....

.....

15.1 Has the reporting entity guaranteed any financed premium accounts? Yes [ ] No [X]

15.2 If yes, give full information

.....

.....

.....

16.1 Does the reporting entity write any warranty business? Yes [ ] No [X]  
If yes, disclose the following information for each of the following types of warranty coverage:

		1	2	3	4	5
		Direct Losses Incurred	Direct Losses Unpaid	Direct Written Premium	Direct Premium Unearned	Direct Premium Earned
16.11 Home	\$	0	0	0	0	0
16.12 Products	\$	0	0	0	0	0
16.13 Automobile	\$	0	0	0	0	0
16.14 Other*	\$	0	0	0	0	0

\* Disclose type of coverage: \_\_\_\_\_

## GENERAL INTERROGATORIES

### PART 2 – PROPERTY & CASUALTY INTERROGATORIES

17.1 Does the reporting entity include amounts recoverable on unauthorized reinsurance in Schedule F – Part 3 that it excludes from Schedule F – Part 5.

Yes [ ] No [X]

Incurred but not reported losses on contracts in force prior to July 1, 1984, and not subsequently renewed are exempt from inclusion in Schedule F – Part 5. Provide the following information for this exemption:

17.11 Gross amount of unauthorized reinsurance in Schedule F – Part 3 excluded from Schedule F – Part 5	\$ <u>0</u>
17.12 Unfunded portion of Interrogatory 17.11	\$ <u>0</u>
17.13 Paid losses and loss adjustment expenses portion of Interrogatory 17.11	\$ <u>0</u>
17.14 Case reserves portion of Interrogatory 17.11	\$ <u>0</u>
17.15 Incurred but not reported portion of Interrogatory 17.11	\$ <u>0</u>
17.16 Unearned premium portion of Interrogatory 17.11	\$ <u>0</u>
17.17 Contingent commission portion of Interrogatory 17.11	\$ <u>0</u>

Provide the following information for all other amounts included in Schedule F – Part 3 and excluded from Schedule F – Part 5, not included above.

17.18 Gross amount of unauthorized reinsurance in Schedule F – Part 3 excluded from Schedule F – Part 5	\$ <u>0</u>
17.19 Unfunded portion of Interrogatory 17.18	\$ <u>0</u>
17.20 Paid losses and loss adjustment expenses portion of Interrogatory 17.18	\$ <u>0</u>
17.21 Case reserves portion of Interrogatory 17.18	\$ <u>0</u>
17.22 Incurred but not reported portion of Interrogatory 17.18	\$ <u>0</u>
17.23 Unearned premium portion of Interrogatory 17.18	\$ <u>0</u>
17.24 Contingent commission portion of Interrogatory 17.18	\$ <u>0</u>

18.1 Do you act as a custodian for health savings accounts?

Yes [ ] No [X]

18.2 If yes, please provide the amount of custodial funds held as of the reporting date.

\$ 0

18.3 Do you act as an administrator for health savings accounts?

Yes [ ] No [X]

18.4 If yes, please provide the balance of the funds administered as of the reporting date.

\$ 0

## FIVE – YEAR HISTORICAL DATA

Show amounts in whole dollars only, no cents; show percentages to one decimal place, i.e., 17.6.

	1	2	3	4	5
	2013	2012	2011	2010	2009
<b>Gross Premiums Written (Page 8, Part 1B, Cols. 1, 2 &amp; 3)</b>					
1. Liability lines (Lines 11.1, 11.2, 16, 17.1, 17.2, 17.3, 18.1, 18.2, 19.1, 19.2 & 19.3, 19.4)	47,725,959	91,277,978	93,551,652	92,035,060	86,897,775
2. Property lines (Lines 1, 2, 9, 12, 21 & 26)	36,219,184	57,745,369	55,566,873	53,475,237	46,567,056
3. Property and liability combined lines (Lines 3, 4, 5, 8, 22 & 27)	(14,823,320)	31,486,189	29,838,045	28,440,108	26,085,571
4. All other lines (Lines 6, 10, 13, 14, 15, 23, 24, 28, 29, 30 & 34)	(3,365,318)	5,744,390	5,991,128	5,844,378	4,453,824
5. Nonproportional reinsurance lines (Lines 31, 32 & 33)					1
6. Total (Line 35)	65,756,505	186,253,926	184,947,698	179,794,783	164,004,227
<b>Net Premiums Written (Page 8, Part 1B, Col. 6)</b>					
7. Liability lines (Lines 11.1, 11.2, 16, 17.1, 17.2, 17.3, 18.1, 18.2, 19.1, 19.2 & 19.3, 19.4)	(14,477,428)	33,243,515	33,570,989	34,405,981	37,655,844
8. Property lines (Lines 1, 2, 9, 12, 21 & 26)	(8,284,896)	17,752,713	16,550,393	16,541,090	13,783,137
9. Property and liability combined lines (Lines 3, 4, 5, 8, 22 & 27)	(15,665,490)	30,605,099	28,954,069	27,551,271	25,065,868
10. All other lines (Lines 6, 10, 13, 14, 15, 23, 24, 28, 29, 30 & 34)	(3,365,318)	5,744,390	5,991,128	5,844,378	4,453,824
11. Nonproportional reinsurance lines (Lines 31, 32 & 33)					1
12. Total (Line 35)	(41,793,132)	87,345,717	85,066,579	84,342,720	80,958,674
<b>Statement of Income (Page 4)</b>					
13. Net underwriting gain (loss) (Line 8)		538,037	(5,176,454)	(1,185,744)	3,519,999
14. Net investment gain (loss) (Line 11)	535,346	5,997,988	5,422,013	7,377,833	7,005,388
15. Total other income (Line 15)		369,733	258,001	(652,545)	(141,446)
16. Dividends to policyholders (Line 17)		205,980	168,226	(28,194)	358,600
17. Federal and foreign income taxes incurred (Line 19)	(6,027,098)	908,122	(97,095)	(853,103)	1,994,452
18. Net income (Line 20)	6,562,444	5,791,656	432,429	6,420,841	8,030,889
<b>Balance Sheet Lines (Pages 2 and 3)</b>					
19. Total admitted assets excluding protected cell business (Page 2, Line 26, Col. 3)	31,371,241	178,630,879	185,644,832	187,098,362	212,746,901
20. Premiums and considerations (Page 2, Col. 3)					
20.1 In course of collection (Line 15.1)		2,542,880	3,205,742	2,871,824	3,169,545
20.2 Deferred and not yet due (Line 15.2)		25,659,429	24,123,587	23,096,696	22,505,322
20.3 Accrued retrospective premiums (Line 15.3)		545	36,941	73,287	130,638
21. Total liabilities excluding protected cell business (Page 3, Line 26)	10,344,845	152,064,753	150,624,261	151,958,812	151,622,074
22. Losses (Page 3, Line 1)		70,731,981	72,114,971	71,444,366	75,202,385
23. Loss adjustment expenses (Page 3, Line 3)		16,176,036	15,945,906	15,945,414	17,904,365
24. Unearned premiums (Page 3, Line 9)		41,962,084	40,312,976	38,825,262	36,809,073
25. Capital paid up (Page 3, Lines 30 & 31)	5,000,000	5,000,000	5,000,000	5,000,000	5,000,000
26. Surplus as regards policyholders (Page 3, Line 37)	21,026,396	26,566,126	35,020,571	35,139,550	61,124,827
<b>Cash Flow (Page 5)</b>					
27. Net cash from operations (Line 11)	(112,166,784)	7,002,468	3,398,106	(607,966)	(3,990,212)
<b>Risk-Based Capital Analysis</b>					
28. Total adjusted capital	21,026,396	26,566,126	35,020,571	35,139,550	61,124,827
29. Authorized control level risk-based capital	70,337	7,569,193	7,485,692	7,499,278	7,597,634
<b>Percentage Distribution of Cash, Cash Equivalents and Invested Assets</b> (Page 2, Col. 3) (Item divided by Page 2, Line 12, Col. 3) x 100.0					
30. Bonds (Line 1)	97.6	97.2	96.0	90.7	96.0
31. Stocks (Lines 2.1 & 2.2)					
32. Mortgage loans on real estate (Lines 3.1 and 3.2)					
33. Real estate (Lines 4.1, 4.2 & 4.3)					
34. Cash, cash equivalents and short-term investments (Line 5)	0.0	2.7	3.5	6.5	4.0
35. Contract loans (Line 6)					
36. Derivatives (Line 7)					X X X
37. Other invested assets (Line 8)					
38. Receivables for securities (Line 9)		0.2	0.1		
39. Securities lending reinvested collateral assets (Line 10)	2.4		0.4	2.8	X X X
40. Aggregate write-ins for invested assets (Line 11)					
41. Cash, cash equivalents and invested assets (Line 12)	100.0	100.0	100.0	100.0	100.0
<b>Investments in Parent, Subsidiaries and Affiliates</b>					
42. Affiliated bonds, (Sch. D, Summary, Line 12, Col. 1)					
43. Affiliated preferred stocks (Sch. D, Summary, Line 18, Col. 1)					
44. Affiliated common stocks (Sch. D, Summary, Line 24, Col. 1)					
45. Affiliated short-term investments (subtotals included in Schedule DA Verification, Col. 5, Line 10)					
46. Affiliated mortgage loans on real estate					
47. All other affiliated					
48. Total of above Lines 42 to 47					
49. Total investment in parent included in Lines 42 to 47 above					
50. Percentage of investments in parent, subsidiaries and affiliates to surplus as regards policyholders (Line 48 above divided by Page 3, Col. 1, Line 37 x 100.0)					

## FIVE – YEAR HISTORICAL DATA

(Continued)

	1	2	3	4	5
	2013	2012	2011	2010	2009
<b>Capital and Surplus Accounts (Page 4)</b>					
51. Net unrealized capital gains (losses) (Line 24)	2,609	66,740	343,560	(358,337)	1,281,801
52. Dividends to stockholders (Line 35)		(9,673,700)		(14,003,461)	
53. Change in surplus as regards policyholders for the year (Line 38)	(5,539,730)	(8,454,445)	(118,979)	(25,985,277)	12,115,310
<b>Gross Losses Paid (Page 9, Part 2, Cols. 1 &amp; 2)</b>					
54. Liability lines (Lines 11.1, 11.2, 16, 17.1, 17.2, 17.3, 18.1, 18.2, 19.1, 19.2 & 19.3, 19.4)	90,404,254	55,700,589	58,121,595	55,416,704	44,693,801
55. Property lines (Lines 1, 2, 9, 12, 21 & 26)	25,493,767	31,857,516	33,036,476	29,793,014	26,537,551
56. Property and liability combined lines (Lines 3, 4, 5, 8, 22 & 27)	18,571,364	17,943,498	21,130,112	15,544,663	13,348,971
57. All other lines (Lines 6, 10, 13, 14, 15, 23, 24, 28, 29, 30 & 34)	975,081	2,242,757	1,510,158	1,156,489	610,115
58. Nonproportional reinsurance lines (Lines 31, 32 & 33)	225,063	56,615	63,084	171,288	2,471,378
59. Total (Line 35)	135,669,529	107,800,975	113,861,425	102,082,158	87,661,816
<b>Net Losses Paid (Page 9, Part 2, Col. 4)</b>					
60. Liability lines (Lines 11.1, 11.2, 16, 17.1, 17.2, 17.3, 18.1, 18.2, 19.1, 19.2 & 19.3, 19.4)	50,534,181	18,920,004	20,321,656	25,503,471	19,845,831
61. Property lines (Lines 1, 2, 9, 12, 21 & 26)	922,919	9,359,215	9,391,612	8,476,300	9,505,900
62. Property and liability combined lines (Lines 3, 4, 5, 8, 22 & 27)	18,074,736	17,415,053	19,869,703	14,683,572	12,415,322
63. All other lines (Lines 6, 10, 13, 14, 15, 23, 24, 28, 29, 30 & 34)	975,081	2,242,757	1,510,158	1,156,489	610,115
64. Nonproportional reinsurance lines (Lines 31, 32 & 33)	225,063	56,615	63,084	171,288	2,471,438
65. Total (Line 35)	70,731,980	47,993,644	51,156,213	49,991,120	44,848,606
<b>Operating Percentages (Page 4)</b> (Item divided by Page 4, Line 1) x 100.0					
66. Premiums earned (Line 1)	100.0	100.0	100.0	100.0	100.0
67. Losses incurred (Line 2)		54.3	61.9	56.0	50.7
68. Loss expenses incurred (Line 3)		12.4	12.1	11.8	11.9
69. Other underwriting expenses incurred (Line 4)		32.7	32.2	33.6	33.2
70. Net underwriting gain (loss) (Line 8)		0.6	(6.2)	(1.4)	4.2
<b>Other Percentages</b>					
71. Other underwriting expenses to net premiums written (Page 4, Lines 4 + 5 - 12 divided by Page 8, Part 1B, Col. 6, Line 35 x 100.0)		31.7	31.4	33.6	34.6
72. Losses and loss expenses incurred to premiums earned (Page 4, Lines 2 + 3 divided by Page 4, Line 1 x 100.0)		66.7	73.9	67.8	62.6
73. Net premiums written to policyholders' surplus (Page 8, Part 1B, Col. 6, Line 35 divided by Page 3, Line 37, Col. 1 x 100.0)	(198.8)	328.8	242.9	240.0	132.4
<b>One Year Loss Development (000 omitted)</b>					
74. Development in estimated losses and loss expenses incurred prior to current year (Schedule P, Part 2-Summary, Line 12, Col. 11)		(3,353)	(2,255)	(958)	(6,170)
75. Percent of development of losses and loss expenses incurred to policyholders' surplus of prior year end (Line 74 above divided by Page 4, Line 21, Col. 1 x 100.0)		(9.6)	(6.4)	(1.6)	(12.6)
<b>Two Year Loss Development (000 omitted)</b>					
76. Development in estimated losses and loss expenses incurred 2 years before the current year and prior year (Schedule P, Part 2-Summary, Line 12, Col. 12)		(4,302)	(2,024)	(4,929)	(8,892)
77. Percent of development of losses and loss expenses incurred to reported policyholders' surplus of second prior year end (Line 76 above divided by Page 4, Line 21, Col. 2 x 100.0)		(12.2)	(3.3)	(10.1)	(11.3)

NOTE: If a party to a merger, have the two most recent years of this exhibit been restated due to a merger in compliance with the disclosure requirements of SSAP No. 3, Accounting Changes and Correction of Errors?

Yes [ ] No [ ]

If no, please explain:

.....  
.....  
.....

**NONE**    **Schedule P - Part 1 - Summary**

**NONE**    **Schedule P - Part 2, 3, 4 - Summary**

## SCHEDULE T - EXHIBIT OF PREMIUMS WRITTEN

### Allocated By States and Territories

States, Etc.	1	Gross Premiums, Including Policy and Membership Fees Less Return Premiums and Premiums on Policies Not Taken		4	5	6	7	8	9
		2	3						
	Active Status	Direct Premiums Written	Direct Premiums Earned	Dividends Paid or Credited to Policyholders on Direct Business	Direct Losses Paid (Deducting Salvage)	Direct Losses Incurred	Direct Losses Unpaid	Finance and Service Charges Not Included in Premiums	Direct Premium Written for Federal Purchasing Groups (Included in Col. 2)
1. Alabama	AL L				25	25			
2. Alaska	AK L								
3. Arizona	AZ L				18,761	22,995	4,234		
4. Arkansas	AR L								
5. California	CA L	42,159,245	41,402,006		24,401,374	25,409,719	13,107,415	480,731	
6. Colorado	CO L				1,868	1,868			
7. Connecticut	CT N				7,850	31,214	23,364		
8. Delaware	DE L				417	417			
9. District of Columbia	DC L				1,274	16			
10. Florida	FL N				3,098	3,098			
11. Georgia	GA L	834,714	857,362		539,720	492,747	94,264	9,518	
12. Hawaii	HI N								
13. Idaho	ID L	1,183,021	1,131,221		987,193	546,931	810,209	13,490	
14. Illinois	IL L	497,064	481,354		61,393	94,943	71,173	5,668	
15. Indiana	IN L				9,471	(15,197)	470		
16. Iowa	IA L				(2,883)	(4,935)	397		
17. Kansas	KS L				772	772			
18. Kentucky	KY L				1,795	1,795			
19. Louisiana	LA L				(384)	(384)			
20. Maine	ME N								
21. Maryland	MD L	45,713,630	42,169,104		28,943,618	28,258,629	15,036,307	521,261	
22. Massachusetts	MA N								
23. Michigan	MI L								
24. Minnesota	MN L				50,000	550,056	500,000		
25. Mississippi	MS L	224,612	217,593		23,992	696,376	296,213	2,561	
26. Missouri	MO L						3,558		
27. Montana	MT L	1,954,286	1,910,003		1,386,503	463,775	490,244	22,284	
28. Nebraska	NE L								
29. Nevada	NV L	162,303	153,696		20,663	130,261	207,582	1,851	
30. New Hampshire	NH N				24,439	24,439			
31. New Jersey	NJ N				27,523	27,258	1,934		
32. New Mexico	NM L								
33. New York	NY N								
34. North Carolina	NC L	7,013,175	7,869,464		6,004,587	5,058,402	2,378,362	79,969	
35. North Dakota	ND L	180,716	180,122		43,765	24,613	28,606	2,061	
36. Ohio	OH L				(137)	(137)			
37. Oklahoma	OK L								
38. Oregon	OR L				700	700			
39. Pennsylvania	PA L								
40. Rhode Island	RI N								
41. South Carolina	SC L								
42. South Dakota	SD L	315,760	223,453		61,855	51,723	38,495	3,601	
43. Tennessee	TN L				(438)	(280)	228		
44. Texas	TX L						421		
45. Utah	UT L								
46. Vermont	VT N								
47. Virginia	VA L	61,917	49,000		61,071	56,798	3,607	706	
48. Washington	WA L	6,700,216	6,483,829		2,151,371	2,435,176	5,362,014	76,401	
49. West Virginia	WV L								
50. Wisconsin	WI L								
51. Wyoming	WY L	548,978	550,034		106,294	67,343	122,915	6,260	
52. American Samoa	AS N								
53. Guam	GU N								
54. Puerto Rico	PR N								
55. U.S. Virgin Islands	VI N								
56. Northern Mariana Islands	MP N								
57. Canada	CAN N								
58. Aggregate Other Alien	OT X X X								
59. Totals	(a) 41	107,549,637	103,678,241		64,937,550	64,431,156	38,582,012	1,226,362	

DETAILS OF WRITE-INS									
58001.	X X X								
58002.	X X X								
58003.	X X X								
58998. Summary of remaining write-ins for Line 58 from overflow page	X X X								
58999. Totals (Lines 58001 through 58003 plus 58998) (Line 58 above)	X X X								

(L) Licensed or Chartered - Licensed Insurance Carrier or Domiciled RRG; (R) Registered - Non-domiciled RRGs; (Q) Qualified - Qualified or Accredited Reinsurer; (E) Eligible - Reporting Entities eligible or approved to write Surplus Lines in the state; (N) None of the above - Not allowed to write business in the state.

Explanation of basis of allocation of premiums by states, etc.	
*Location of coverage - Fire, Allied Lines, Homeowners Multi Peril, Commercial Multi Peril, Earthquake, Boiler and Machinery	*Location of Court or Obligor - Surety
*States employee's main work place - Worker's Compensation	*Address of Assured - Other Accident and Health
*Location of Principal place of garaging of each individual car - Auto Liability, Auto Physical Damage	*Location of Properties covered - Burglary and Theft
*Principal Location of business or location of coverage - Liability other than Auto, Fidelity, Warranty	*Principal Location of Assured - Ocean Marine, Credit
*Point of origin of shipment or principal location of assured - Inland Marine	*Primary residence of Assured - Aircraft (all perils)
*State in which employees regularly work - Group Accident and Health	

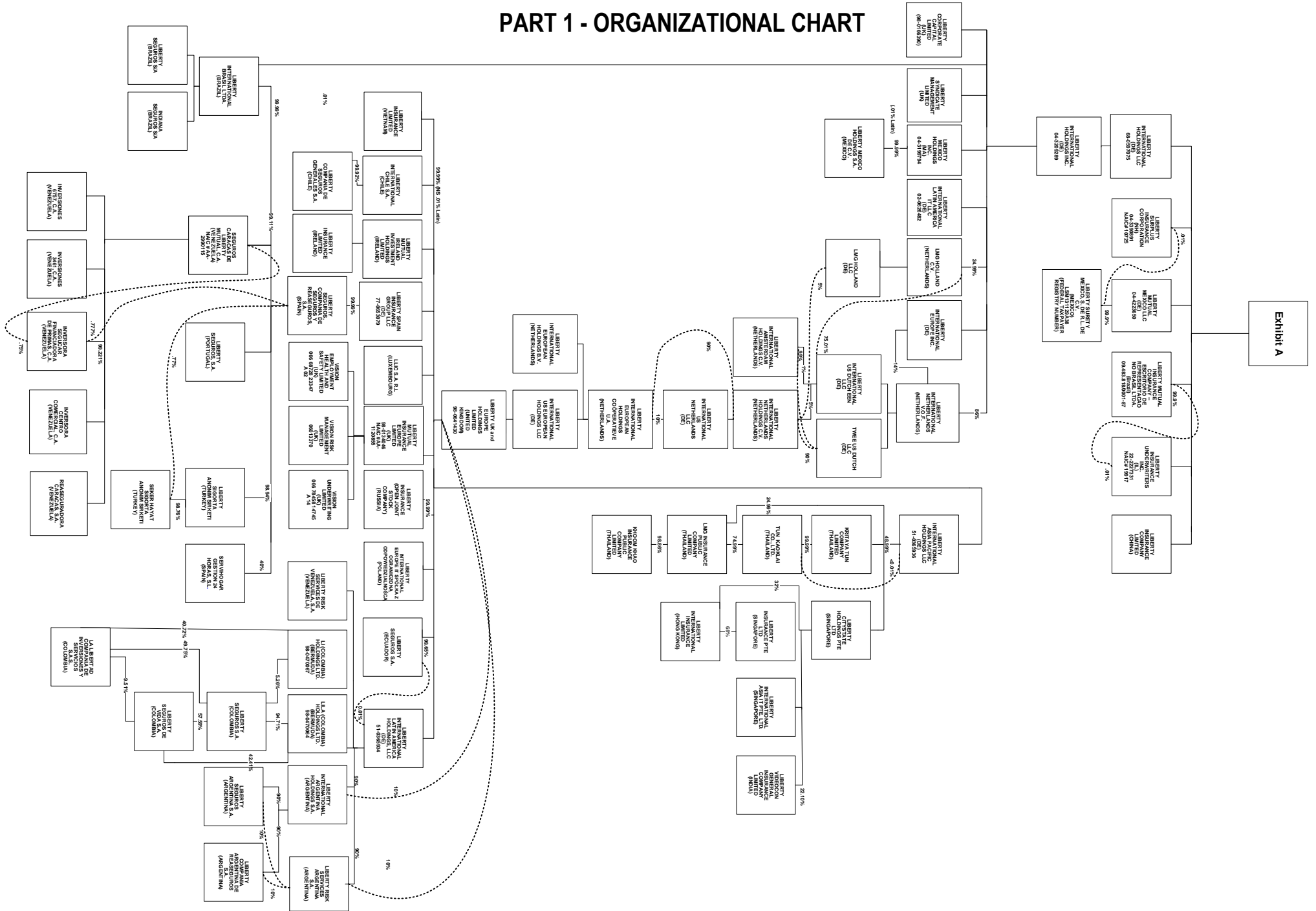
(a) Insert the number of L responses except for Canada and Other Alien.





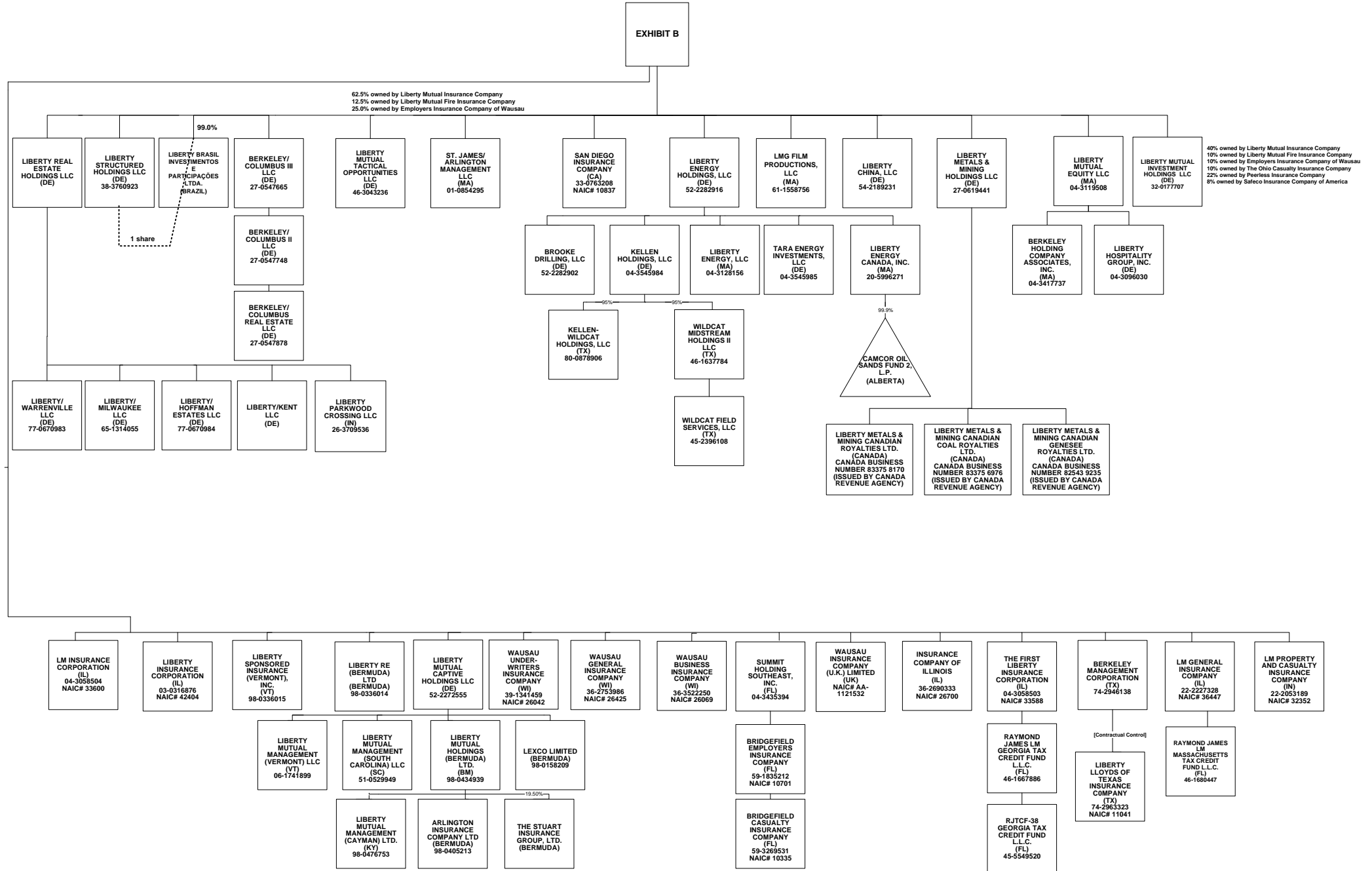
# SCHEDULE Y - INFORMATION CONCERNING ACTIVITIES OF INSURER MEMBERS OF A HOLDING COMPANY GROUP

## PART 1 - ORGANIZATIONAL CHART



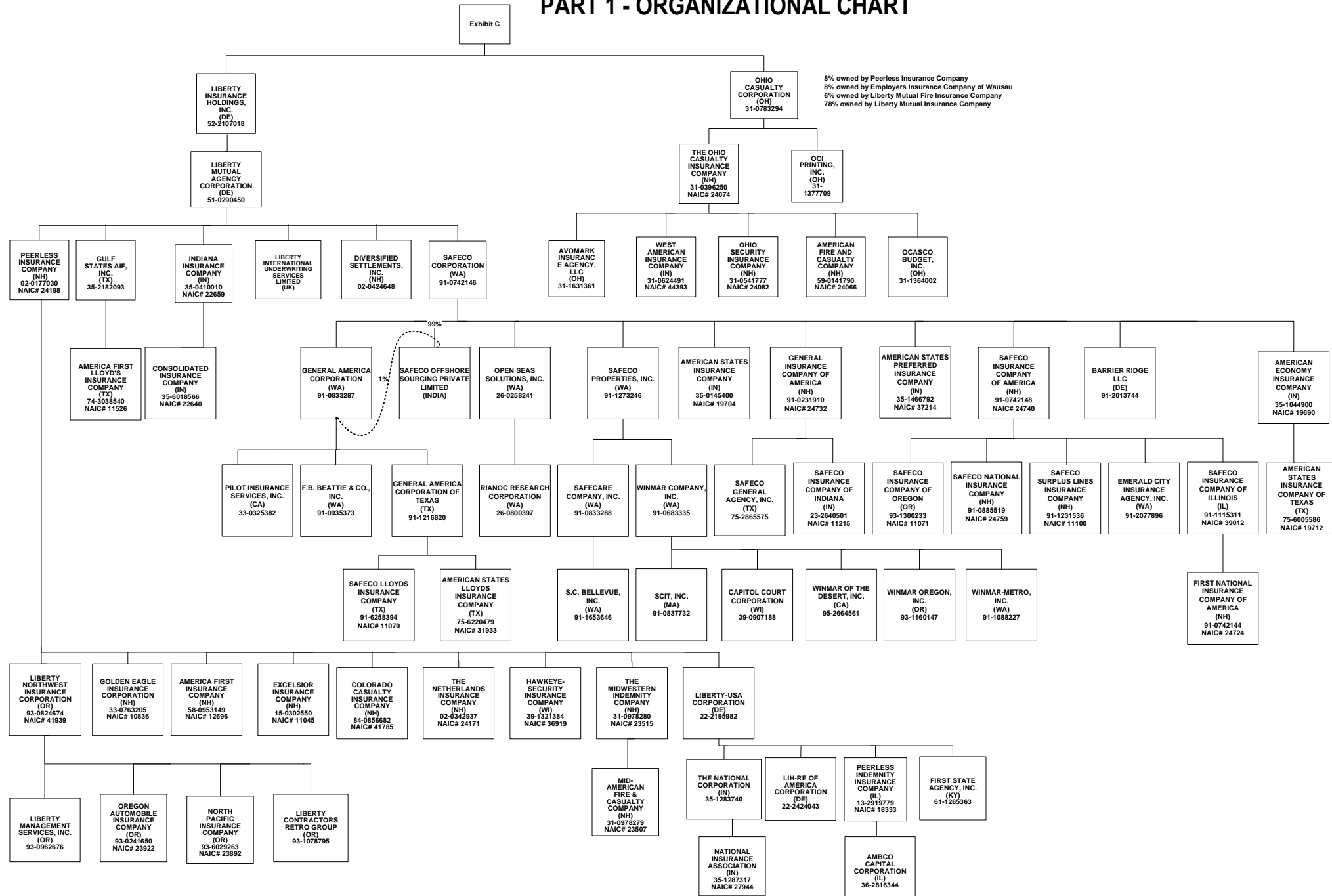
# SCHEDULE Y - INFORMATION CONCERNING ACTIVITIES OF INSURER MEMBERS OF A HOLDING COMPANY GROUP

## PART 1 - ORGANIZATIONAL CHART



# SCHEDULE Y - INFORMATION CONCERNING ACTIVITIES OF INSURER MEMBERS OF A HOLDING COMPANY GROUP

## PART 1 - ORGANIZATIONAL CHART



**OVERFLOW PAGE FOR WRITE-INS**

---

## ALPHABETICAL INDEX TO PROPERTY ANNUAL STATEMENT

Assets	2	Schedule E – Part 3 – Special Deposits	E28
Cash Flow	5	Schedule E – Verification Between Years	SI15
Exhibit of Capital Gains (Losses)	12	Schedule F – Part 1	20
Exhibit of Net Investment Income	12	Schedule F – Part 2	21
Exhibit of Nonadmitted Assets	13	Schedule F – Part 3	22
Exhibit of Premiums and Losses (State Page)	19	Schedule F – Part 4	23
Five-Year Historical Data	17	Schedule F – Part 5	24
General Interrogatories	15	Schedule F – Part 6 - Section 1	25
Jurat Page	1	Schedule F – Part 6 - Section 2	26
Liabilities, Surplus and Other Funds	3	Schedule F – Part 7	27
Notes To Financial Statements	14	Schedule F – Part 8	28
Overflow Page For Write-ins	100	Schedule F – Part 9	29
Schedule A – Part 1	E01	Schedule H – Accident and Health Exhibit – Part 1	30
Schedule A – Part 2	E02	Schedule H – Part 2, Part 3 and Part 4	31
Schedule A – Part 3	E03	Schedule H – Part 5 – Health Claims	32
Schedule A – Verification Between Years	SI02	Schedule P – Part 1 – Summary	33
Schedule B – Part 1	E04	Schedule P – Part 1A – Homeowners/Farmowners	35
Schedule B – Part 2	E05	Schedule P – Part 1B – Private Passenger Auto Liability/Medical	36
Schedule B – Part 3	E06	Schedule P – Part 1C – Commercial Auto/Truck Liability/Medical	37
Schedule B – Verification Between Years	SI02	Schedule P – Part 1D – Workers' Comp (Excluding Excess Workers' Comp)	38
Schedule BA – Part 1	E07	Schedule P – Part 1E – Commercial Multiple Peril	39
Schedule BA – Part 2	E08	Schedule P – Part 1F – Section 1 – Medical Professional Liability	
Schedule BA – Part 3	E09	– Occurrence	40
Schedule BA – Verification Between Years	SI03	Schedule P – Part 1F – Section 2 – Medical Professional Liability	
Schedule D – Part 1	E10	– Claims-Made	41
Schedule D – Part 1A – Section 1	SI05	Schedule P – Part 1G – Special Liability (Ocean, Marine, Aircraft (All	
Schedule D – Part 1A – Section 2	SI08	Perils), Boiler and Machinery)	42
Schedule D – Part 2 – Section 1	E11	Schedule P – Part 1H – Section 1 – Other Liability – Occurrence	43
Schedule D – Part 2 – Section 2	E12	Schedule P – Part 1H – Section 2 – Other Liability – Claims-Made	44
Schedule D – Part 3	E13	Schedule P – Part 1I – Special Property (Fire, Allied Lines, Inland Marine,	
Schedule D – Part 4	E14	Earthquake, Burglary & Theft)	45
Schedule D – Part 5	E15	Schedule P – Part 1J – Auto Physical Damage	46
Schedule D – Part 6 – Section 1	E16	Schedule P – Part 1K – Fidelity/Surety	47
Schedule D – Part 6 – Section 2	E16	Schedule P – Part 1L – Other (Including Credit, Accident and Health)	48
Schedule D – Summary By Country	SI04	Schedule P – Part 1M – International	49
Schedule D – Verification Between Years	SI03	Schedule P – Part 1N – Reinsurance - Nonproportional Assumed Property	50
Schedule DA – Part 1	E17	Schedule P – Part 1O – Reinsurance - Nonproportional Assumed Liability	51
Schedule DA – Verification Between Years	SI10	Schedule P – Part 1P – Reinsurance - Nonproportional Assumed Financial Lines	52
Schedule DB – Part A – Section 1	E18	Schedule P – Part 1R – Section 1 – Products Liability – Occurrence	53
Schedule DB – Part A – Section 2	E19	Schedule P – Part 1R – Section 2 – Products Liability – Claims – Made	54
Schedule DB – Part A – Verification Between Years	SI11	Schedule P – Part 1S – Financial Guaranty/Mortgage Guaranty	55
Schedule DB – Part B – Section 1	E20	Schedule P – Part 1T – Warranty	56
Schedule DB – Part B – Section 2	E21	Schedule P – Part 2, Part 3 and Part 4 - Summary	34
Schedule DB – Part B – Verification Between Years	SI11	Schedule P – Part 2A – Homeowners/Farmowners	57
Schedule DB – Part C – Section 1	SI12	Schedule P – Part 2B – Private Passenger Auto Liability/Medical	57
Schedule DB – Part C – Section 2	SI13	Schedule P – Part 2C – Commercial Auto/Truck Liability/Medical	57
Schedule DB - Part D - Section 1	E22	Schedule P – Part 2D – Workers' Comp (Excluding Excess Workers' Comp)	57
Schedule DB - Part D - Section 2	E23	Schedule P – Part 2E – Commercial Multiple Peril	57
Schedule DB - Verification	SI14	Schedule P – Part 2F – Section 1 – Medical Professional Liability	
Schedule DL - Part 1	E24	– Occurrence	58
Schedule DL - Part 2	E25	Schedule P - Part 2F - Medical Professional Liability - Claims - Made	58
Schedule E – Part 1 – Cash	E26	Schedule P – Part 2G – Special Liability (Ocean Marine, Aircraft (All Perils),	
Schedule E – Part 2 – Cash Equivalents	E27	Boiler and Machinery)	58

## ALPHABETICAL INDEX TO PROPERTY ANNUAL STATEMENT

Schedule P – Part 2H – Section 1 – Other Liability – Occurrence	58	Schedule P – Part 4I – Special Property (Fire, Allied Lines, Inland Marine, Earthquake, Burglary and Theft)	69
Schedule P – Part 2H – Section 2 – Other Liability – Claims – Made	58	Schedule P – Part 4J – Auto Physical Damage	69
Schedule P – Part 2I – Special Property (Fire, Allied Lines, Inland Marine, Earthquake, Burglary, and Theft)	59	Schedule P – Part 4K – Fidelity/Surety	69
Schedule P – Part 2J – Auto Physical Damage	59	Schedule P – Part 4L – Other (Including Credit, Accident and Health)	69
Schedule P – Part 2K – Fidelity, Surety	59	Schedule P – Part 4M – International	69
Schedule P – Part 2L – Other (Including Credit, Accident and Health)	59	Schedule P – Part 4N – Reinsurance - Nonproportional Assumed Property	70
Schedule P – Part 2M – International	59	Schedule P – Part 4O – Reinsurance - Nonproportional Assumed Liability	70
Schedule P – Part 2N – Reinsurance - Nonproportional Assumed Property	60	Schedule P – Part 4P – Reinsurance - Nonproportional Assumed Financial Lines	70
Schedule P – Part 2O – Reinsurance - Nonproportional Assumed Liability	60	Schedule P – Part 4R – Section 1 – Products Liability – Occurrence	71
Schedule P – Part 2P – Reinsurance - Nonproportional Assumed Financial Lines	60	Schedule P – Part 4R – Section 2 – Products Liability – Claims-Made	71
Schedule P – Part 2R – Section 1 – Products Liability – Occurrence	61	Schedule P – Part 4S – Financial Guaranty/Mortgage Guaranty	71
Schedule P – Part 2R – Section 2 – Products Liability – Claims-Made	61	Schedule P – Part 4T – Warranty	71
Schedule P – Part 2S – Financial Guaranty/Mortgage Guaranty	61	Schedule P – Part 5A – Homeowners/Farmowners	72
Schedule P – Part 2T – Warranty	61	Schedule P – Part 5B – Private Passenger Auto Liability/Medical	73
Schedule P – Part 3A – Homeowners/Farmowners	62	Schedule P – Part 5C – Commercial Auto/Truck Liability/Medical	74
Schedule P – Part 3B – Private Passenger Auto Liability/Medical	62	Schedule P – Part 5D – Workers' Comp (Excluding Excess Workers' Comp)	75
Schedule P – Part 3C – Commercial Auto/Truck Liability/Medical	62	Schedule P – Part 5E – Commercial Multiple Peril	76
Schedule P – Part 3D – Workers' Comp (Excluding Excess Workers' Comp)	62	Schedule P – Part 5F – Medical Professional Liability – Claims-Made	78
Schedule P – Part 3E – Commercial Multiple Peril	62	Schedule P – Part 5F – Medical Professional Liability – Occurrence	77
Schedule P – Part 3F – Section 1 – Medical Professional Liability – Occurrence	63	Schedule P – Part 5H – Other Liability – Claims-Made	80
Schedule P – Part 3F – Section 2 – Medical Professional Liability – Claims-Made	63	Schedule P – Part 5H – Other Liability – Occurrence	79
Schedule P – Part 3G – Special Liability (Ocean Marine, Aircraft (All Perils), Boiler and Machinery)	63	Schedule P – Part 5R – Products Liability – Claims-Made	82
Schedule P – Part 3H – Section 1 – Other Liability – Occurrence	63	Schedule P – Part 5R – Products Liability – Occurrence	81
Schedule P – Part 3H – Section 2 – Other Liability – Claims-Made	63	Schedule P – Part 5T – Warranty	83
Schedule P – Part 3I – Special Property (Fire, Allied Lines, Inland Marine, Earthquake, Burglary, and Theft)	63	Schedule P – Part 6C – Commercial Auto/Truck Liability/Medical	84
Schedule P – Part 3J – Auto Physical Damage	63	Schedule P – Part 6D – Workers' Comp (Excluding Excess Workers' Comp)	84
Schedule P – Part 3K – Fidelity/Surety	63	Schedule P – Part 6E – Commercial Multiple Peril	85
Schedule P – Part 3L – Other (Including Credit, Accident and Health)	63	Schedule P – Part 6H – Other Liability – Claims-Made	86
Schedule P – Part 3M – International	63	Schedule P – Part 6H – Other Liability – Occurrence	85
Schedule P – Part 3N – Reinsurance - Nonproportional Assumed Property	64	Schedule P – Part 6M – International	86
Schedule P – Part 3O – Reinsurance - Nonproportional Assumed Liability	64	Schedule P – Part 6N – Reinsurance - Nonproportional Assumed Property	87
Schedule P – Part 3P – Reinsurance - Nonproportional Assumed Financial Lines	64	Schedule P – Part 6O – Reinsurance - Nonproportional Assumed Liability	87
Schedule P – Part 3R – Section 1 – Products Liability – Occurrence	65	Schedule P – Part 6R – Products Liability – Claims-Made	88
Schedule P – Part 3R – Section 2 – Products Liability – Claims-Made	65	Schedule P – Part 6R – Products Liability – Occurrence	88
Schedule P – Part 3S – Financial Guaranty/Mortgage Guaranty	65	Schedule P – Part 7A – Primary Loss Sensitive Contracts	89
Schedule P – Part 3T – Warranty	65	Schedule P – Part 7B – Reinsurance Loss Sensitive Contracts	91
Schedule P – Part 4A – Homeowners/Farmowners	66	Schedule P Interrogatories	93
Schedule P – Part 4B – Private Passenger Auto Liability/Medical	66	Schedule T – Exhibit of Premiums Written	94
Schedule P – Part 4C – Commercial Auto/Truck Liability/Medical	66	Schedule T – Part 2 – Interstate Compact	95
Schedule P – Part 4D – Workers' Comp (Excluding Excess Workers' Comp)	66	Schedule Y – Information Concerning Activities of Insurer Members of a Holding Company Group	96
Schedule P – Part 4E – Commercial Multiple Peril	66	Schedule Y - Part 1A - Detail of Insurance Holding Company System	97
Schedule P – Part 4F – Section 1 – Medical Professional Liability – Occurrence	67	Schedule Y – Part 2 – Summary of Insurer's Transactions With Any Affiliates	98
Schedule P – Part 4F – Section 2 – Medical Professional Liability – Claims-Made	67	Statement of Income	4
Schedule P – Part 4G – Special Liability (Ocean Marine, Aircraft (All Perils), Boiler and Machinery)	67	Summary Investment Schedule	SI01
Schedule P – Part 4H – Section 1 – Other Liability – Occurrence	67	Supplemental Exhibits and Schedules Interrogatories	99
Schedule P – Part 4H – Section 2 – Other Liability – Claims-Made	67	Underwriting and Investment Exhibit Part 1	6
		Underwriting and Investment Exhibit Part 1A	7
		Underwriting and Investment Exhibit Part 1B	8
		Underwriting and Investment Exhibit Part 2	9
		Underwriting and Investment Exhibit Part 2A	10
		Underwriting and Investment Exhibit Part 3	11