

ANNUAL STATEMENT

OF THE

WAUSAU UNDERWRITERS INSURANCE COMPANY

of **WAUSAU**

in the state of **WISCONSIN**

TO THE

Insurance Department

OF THE

FOR THE YEAR ENDED

December 31, 2014

PROPERTY AND CASUALTY

2014



ANNUAL STATEMENT

For the Year Ended December 31, 2014
OF THE CONDITION AND AFFAIRS OF THE

Wausau Underwriters Insurance Company

NAIC Group Code 0111, NAIC Company Code 26042, Employer's ID Number 39-1341459, Organized under the Laws of Wisconsin, State of Domicile or Port of Entry Wisconsin, Country of Domicile United States of America, Incorporated/Organized September 27, 1979, Commenced Business January 1, 1980, Statutory Home Office 2000 Westwood Drive, Wausau, WI, US 54401, Main Administrative Office 175 Berkeley Street, Boston, MA, US 02116, Mail Address 175 Berkeley Street, Boston, MA, US 02116, Primary Location of Books and Records 175 Berkeley Street, Boston, MA, US 02116, Internet Web Site Address www.LibertyMutualGroup.com, Statutory Statement Contact Gennaro Petruzziello, 617-357-9500 x44532, Statutory.Compliance@LibertyMutual.com, 857-224-1430

OFFICERS

Chairman of the Board
James Paul Condrin, III

Table with 2 columns: Name, Title. Rows include James Paul Condrin, III (President and Chief Executive Officer), Dexter Robert Legg (Vice President and Secretary), Laurance Henry Soyer Yahia (Vice President and Treasurer)

VICE-PRESIDENTS

Table with 4 columns: Name, Title, Name, Title. Rows include John Derek Doyle (Vice President and Comptroller), Michael Joseph Fallon (Vice President and Chief Financial Officer), Anthony Alexander Fontanes (Vice President and Chief Investment Officer), Elizabeth Julia Morahan # (Vice President and General Counsel)

DIRECTORS OR TRUSTEES

Table with 4 columns: Name, Title, Name, Title. Rows include Kristen Maria Bessette, John Derek Doyle, Michael Henry Hughes, Dexter Robert Legg, Elizabeth Julia Morahan #, Michael Joseph Fallon

State of Massachusetts
County of Suffolk ss

The officers of this reporting entity being duly sworn, each depose and say that they are the described officers of said reporting entity, and that on the reporting period stated above, all of the herein described assets were the absolute property of the said reporting entity, free and clear from any liens or claims thereon, except as herein stated, and that this statement, together with related exhibits, schedules and explanations therein contained, annexed or referred to, is a full and true statement of all the assets and liabilities and of the condition and affairs of the said reporting entity as of the reporting period stated above, and of its income and deductions therefrom for the period ended, and have been completed in accordance with the NAIC Annual Statement Instructions and Accounting Practices and Procedures manual except to the extent that: (1) state law may differ; or, (2) that state rules or regulations require differences in reporting not related to accounting practices and procedures, according to the best of their information, knowledge and belief, respectively. Furthermore, the scope of this attestation by the described officers also includes the related corresponding electronic filing with the NAIC, when required, that is an exact copy (except for formatting differences due to electronic filing) of the enclosed statement. The electronic filing may be requested by various regulators in lieu of or in addition to the enclosed statement.

(Signature) James Paul Condrin, III, (Signature) Dexter Robert Legg, (Signature) Laurance Henry Soyer Yahia
(Printed Name) 1. President and Chief Executive Officer, 2. Vice President and Secretary, 3. Vice President and Treasurer
(Title)

Subscribed and sworn to (or affirmed) before me this on this
26th day of January, 2015, by

- a. Is this an original filing? [X] Yes [] No
b. If no: 1. State the amendment number, 2. Date filed, 3. Number of pages attached

ASSETS

| | Current Year | | | Prior Year |
|---|--------------|--------------------|-----------------------------------|---------------------|
| | 1 | 2 | 3 | 4 |
| | Assets | Nonadmitted Assets | Net Admitted Assets (Cols. 1 - 2) | Net Admitted Assets |
| 1. Bonds (Schedule D) | 60,585,713 | | 60,585,713 | 57,197,497 |
| 2. Stocks (Schedule D): | | | | |
| 2.1 Preferred stocks | | | | |
| 2.2 Common stocks | | | | |
| 3. Mortgage loans on real estate (Schedule B): | | | | |
| 3.1 First liens | | | | |
| 3.2 Other than first liens | | | | |
| 4. Real estate (Schedule A): | | | | |
| 4.1 Properties occupied by the company (less \$ 0 encumbrances) | | | | |
| 4.2 Properties held for the production of income (less \$ 0 encumbrances) | | | | |
| 4.3 Properties held for sale (less \$ 0 encumbrances) | | | | |
| 5. Cash (\$ 0, Schedule E - Part 1), cash equivalents (\$ 0, Schedule E - Part 2), and short-term investments (\$ 1,443,759, Schedule DA) | 1,443,759 | | 1,443,759 | 337,300 |
| 6. Contract loans (including \$ 0 premium notes) | | | | |
| 7. Derivatives (Schedule DB) | | | | |
| 8. Other invested assets (Schedule BA) | | | | |
| 9. Receivables for securities | | | | |
| 10. Securities lending reinvested collateral assets (Schedule DL) | 1,968,017 | | 1,968,017 | 1,052,500 |
| 11. Aggregate write-ins for invested assets | | | | |
| 12. Subtotals, cash and invested assets (Lines 1 to 11) | 63,997,489 | | 63,997,489 | 58,587,297 |
| 13. Title plants less \$ 0 charged off (for Title insurers only) | | | | |
| 14. Investment income due and accrued | 457,405 | | 457,405 | 434,570 |
| 15. Premiums and considerations: | | | | |
| 15.1 Uncollected premiums and agents' balances in the course of collection | | | | (60) |
| 15.2 Deferred premiums, agents' balances and installments booked but deferred and not yet due (including \$ 0 earned but unbilled premiums) | | | | |
| 15.3 Accrued retrospective premiums | | | | |
| 16. Reinsurance: | | | | |
| 16.1 Amounts recoverable from reinsurers | 29,778,385 | | 29,778,385 | 34,923,563 |
| 16.2 Funds held by or deposited with reinsured companies | | | | |
| 16.3 Other amounts receivable under reinsurance contracts | | | | |
| 17. Amounts receivable relating to uninsured plans | | | | |
| 18.1 Current federal and foreign income tax recoverable and interest thereon | 274,013 | | 274,013 | 3,728,939 |
| 18.2 Net deferred tax asset | 2,858,000 | 1,995,245 | 862,755 | |
| 19. Guaranty funds receivable or on deposit | | | | |
| 20. Electronic data processing equipment and software | | | | |
| 21. Furniture and equipment, including health care delivery assets (\$ 0) | | | | |
| 22. Net adjustment in assets and liabilities due to foreign exchange rates | | | | |
| 23. Receivables from parent, subsidiaries and affiliates | 758,836 | | 758,836 | 2,070,001 |
| 24. Health care (\$ 0) and other amounts receivable | | | | |
| 25. Aggregate write-ins for other-than-invested assets | | | | |
| 26. Total assets excluding Separate Accounts, Segregated Accounts and Protected Cell Accounts (Lines 12 to 25) | 98,124,128 | 1,995,245 | 96,128,883 | 99,744,310 |
| 27. From Separate Accounts, Segregated Accounts and Protected Cell Accounts | | | | |
| 28. Total (Lines 26 and 27) | 98,124,128 | 1,995,245 | 96,128,883 | 99,744,310 |

| DETAILS OF WRITE-IN LINES | | | | |
|---|--|--|--|--|
| 1101. | | | | |
| 1102. | | | | |
| 1103. | | | | |
| 1198. Summary of remaining write-ins for Line 11 from overflow page | | | | |
| 1199. Totals (Lines 1101 through 1103 plus 1198) (Line 11 above) | | | | |
| 2501. | | | | |
| 2502. | | | | |
| 2503. | | | | |
| 2598. Summary of remaining write-ins for Line 25 from overflow page | | | | |
| 2599. Totals (Lines 2501 through 2503 plus 2598) (Line 25 above) | | | | |

LIABILITIES, SURPLUS AND OTHER FUNDS

| | 1 | 2 |
|--|--------------|------------|
| | Current Year | Prior Year |
| 1. Losses (Part 2A, Line 35, Column 8) | | |
| 2. Reinsurance payable on paid losses and loss adjustment expenses (Schedule F, Part 1, Column 6) | | |
| 3. Loss adjustment expenses (Part 2A, Line 35, Column 9) | | |
| 4. Commissions payable, contingent commissions and other similar charges | | |
| 5. Other expenses (excluding taxes, licenses and fees) | | |
| 6. Taxes, licenses and fees (excluding federal and foreign income taxes) | | |
| 7.1 Current federal and foreign income taxes (including \$ 0 on realized capital gains (losses)) | | |
| 7.2 Net deferred tax liability | | |
| 8. Borrowed money \$ 0 and interest thereon \$ 0 | | |
| 9. Unearned premiums (Part 1A, Line 38, Column 5) (after deducting unearned premiums for ceded reinsurance of \$ 1,500,767 and including warranty reserves of \$ 0 and accrued accident and health experience rating refunds including \$ 0 for medical loss ratio rebate per the Public Health Service Act) | | |
| 10. Advance premium | | |
| 11. Dividends declared and unpaid: | | |
| 11.1 Stockholders | | |
| 11.2 Policyholders | | |
| 12. Ceded reinsurance premiums payable (net of ceding commissions) | 1,135,902 | 17,435,248 |
| 13. Funds held by company under reinsurance treaties (Schedule F, Part 3, Column 19) | | |
| 14. Amounts withheld or retained by company for account of others | | |
| 15. Remittances and items not allocated | | |
| 16. Provision for reinsurance (including \$ 0 certified) (Schedule F, Part 8) | | |
| 17. Net adjustments in assets and liabilities due to foreign exchange rates | | |
| 18. Drafts outstanding | | |
| 19. Payable to parent, subsidiaries and affiliates | 28,485,736 | 20,124,596 |
| 20. Derivatives | | |
| 21. Payable for securities | | |
| 22. Payable for securities lending | 1,968,017 | 1,052,500 |
| 23. Liability for amounts held under uninsured plans | | |
| 24. Capital notes \$ 0 and interest thereon \$ 0 | | |
| 25. Aggregate write-ins for liabilities | | |
| 26. Total liabilities excluding protected cell liabilities (Lines 1 through 25) | 31,589,655 | 38,612,344 |
| 27. Protected cell liabilities | | |
| 28. Total liabilities (Lines 26 and 27) | 31,589,655 | 38,612,344 |
| 29. Aggregate write-ins for special surplus funds | | |
| 30. Common capital stock | 4,500,000 | 4,500,000 |
| 31. Preferred capital stock | | |
| 32. Aggregate write-ins for other-than-special surplus funds | | |
| 33. Surplus notes | | |
| 34. Gross paid in and contributed surplus | 51,102,304 | 51,102,304 |
| 35. Unassigned funds (surplus) | 8,936,924 | 5,529,662 |
| 36. Less treasury stock, at cost: | | |
| 36.1 0 shares common (value included in Line 30 \$ 0) | | |
| 36.2 0 shares preferred (value included in Line 31 \$ 0) | | |
| 37. Surplus as regards policyholders (Lines 29 to 35, less 36) (Page 4, Line 39) | 64,539,228 | 61,131,966 |
| 38. Totals (Page 2, Line 28, Col. 3) | 96,128,883 | 99,744,310 |

| DETAILS OF WRITE-IN LINES | | |
|---|--|--|
| 2501. | | |
| 2502. | | |
| 2503. | | |
| 2598. Summary of remaining write-ins for Line 25 from overflow page | | |
| 2599. Totals (Lines 2501 through 2503 plus 2598) (Line 25 above) | | |
| 2901. | | |
| 2902. | | |
| 2903. | | |
| 2998. Summary of remaining write-ins for Line 29 from overflow page | | |
| 2999. Totals (Lines 2901 through 2903 plus 2998) (Line 29 above) | | |
| 3201. | | |
| 3202. | | |
| 3203. | | |
| 3298. Summary of remaining write-ins for Line 32 from overflow page | | |
| 3299. Totals (Lines 3201 through 3203 plus 3298) (Line 32 above) | | |

STATEMENT OF INCOME

| | 1 | 2 |
|---|--------------|--------------|
| | Current Year | Prior Year |
| UNDERWRITING INCOME | | |
| 1. Premiums earned (Part 1, Line 35, Column 4) | | |
| DEDUCTIONS: | | |
| 2. Losses incurred (Part 2, Line 35, Column 7) | | |
| 3. Loss adjustment expenses incurred (Part 3, Line 25, Column 1) | | |
| 4. Other underwriting expenses incurred (Part 3, Line 25, Column 2) | | |
| 5. Aggregate write-ins for underwriting deductions | | |
| 6. Total underwriting deductions (Lines 2 through 5) | | |
| 7. Net income of protected cells | | |
| 8. Net underwriting gain (loss) (Line 1 minus Line 6 plus Line 7) | | |
| INVESTMENT INCOME | | |
| 9. Net investment income earned (Exhibit of Net Investment Income, Line 17) | 2,069,235 | 3,469,167 |
| 10. Net realized capital gains (losses) less capital gains tax of \$ 14,150 (Exhibit of Capital Gains (Losses)) | 26,279 | 292,351 |
| 11. Net investment gain (loss) (Lines 9 + 10) | 2,095,514 | 3,761,518 |
| OTHER INCOME | | |
| 12. Net gain or (loss) from agents' or premium balances charged off (amount recovered \$ 0 amount charged off \$ 0) | | |
| 13. Finance and service charges not included in premiums | | |
| 14. Aggregate write-ins for miscellaneous income | (14,629) | 13,643 |
| 15. Total other income (Lines 12 through 14) | (14,629) | 13,643 |
| 16. Net income before dividends to policyholders, after capital gains tax and before all other federal and foreign income taxes (Lines 8 + 11 + 15) | 2,080,885 | 3,775,161 |
| 17. Dividends to policyholders | | |
| 18. Net income, after dividends to policyholders, after capital gains tax and before all other federal and foreign income taxes (Line 16 minus Line 17) | 2,080,885 | 3,775,161 |
| 19. Federal and foreign income taxes incurred | (521,150) | (5,186,420) |
| 20. Net income (Line 18 minus Line 19) (to Line 22) | 2,602,035 | 8,961,581 |
| CAPITAL AND SURPLUS ACCOUNT | | |
| 21. Surplus as regards policyholders, December 31 prior year (Page 4, Line 39, Column 2) | 61,131,966 | 94,267,801 |
| 22. Net income (from Line 20) | 2,602,035 | 8,961,581 |
| 23. Net transfers (to) from Protected Cell accounts | | |
| 24. Change in net unrealized capital gains or (losses) less capital gains tax of \$ 3,763 | 6,988 | 4,935 |
| 25. Change in net unrealized foreign exchange capital gain (loss) | (68,279) | (105,008) |
| 26. Change in net deferred income tax | 2,861,763 | 2,657 |
| 27. Change in nonadmitted assets (Exhibit of Nonadmitted Assets, Line 28, Col. 3) | (1,995,245) | 454,634 |
| 28. Change in provision for reinsurance (Page 3, Line 16, Column 2 minus Column 1) | | |
| 29. Change in surplus notes | | |
| 30. Surplus (contributed to) withdrawn from protected cells | | |
| 31. Cumulative effect of changes in accounting principles | | |
| 32. Capital changes: | | |
| 32.1 Paid in | | |
| 32.2 Transferred from surplus (Stock Dividend) | | |
| 32.3 Transferred to surplus | | |
| 33. Surplus adjustments: | | |
| 33.1 Paid in | | (24,045,335) |
| 33.2 Transferred to capital (Stock Dividend) | | |
| 33.3 Transferred from capital | | |
| 34. Net remittances from or (to) Home Office | | |
| 35. Dividends to stockholders | | (17,954,665) |
| 36. Change in treasury stock (Page 3, Lines 36.1 and 36.2, Column 2 minus Column 1) | | |
| 37. Aggregate write-ins for gains and losses in surplus | | (454,634) |
| 38. Change in surplus as regards policyholders for the year (Lines 22 through 37) | 3,407,262 | (33,135,835) |
| 39. Surplus as regards policyholders, December 31 current year (Lines 21 plus Line 38) (Page 3, Line 37) | 64,539,228 | 61,131,966 |

| DETAILS OF WRITE-IN LINES | | |
|---|----------|-----------|
| 0501. | | |
| 0502. | | |
| 0503. | | |
| 0598. Summary of remaining write-ins for Line 05 from overflow page | | |
| 0599. Totals (Lines 0501 through 0503 plus 0598) (Line 05 above) | | |
| 1401. Other income/(expense) | (14,629) | 13,643 |
| 1402. | | |
| 1403. | | |
| 1498. Summary of remaining write-ins for Line 14 from overflow page | | |
| 1499. Totals (Lines 1401 through 1403 plus 1498) (Line 14 above) | (14,629) | 13,643 |
| 3701. Other changes in surplus | | (454,634) |
| 3702. | | |
| 3703. | | |
| 3798. Summary of remaining write-ins for Line 37 from overflow page | | |
| 3799. Totals (Lines 3701 through 3703 plus 3798) (Line 37 above) | | (454,634) |

CASH FLOW

| | 1 | 2 |
|---|--------------|---------------|
| | Current Year | Prior Year |
| Cash from Operations | | |
| 1. Premiums collected net of reinsurance | (16,299,406) | (36,050,428) |
| 2. Net investment income | 2,350,680 | 4,756,431 |
| 3. Miscellaneous income | (14,628) | (2,213,100) |
| 4. Total (Lines 1 through 3) | (13,963,354) | (33,507,097) |
| 5. Benefit and loss related payments | (5,145,179) | 64,476,396 |
| 6. Net transfers to Separate Accounts, Segregated Accounts and Protected Cell Accounts | | |
| 7. Commissions, expenses paid and aggregate write-ins for deductions | | 19,294,719 |
| 8. Dividends paid to policyholders | | 13,308 |
| 9. Federal and foreign income taxes paid (recovered) net of \$ 0 tax on capital gains (losses) | (3,961,926) | (2,174,635) |
| 10. Total (Lines 5 through 9) | (9,107,105) | 81,609,788 |
| 11. Net cash from operations (Line 4 minus Line 10) | (4,856,249) | (115,116,885) |
| Cash from Investments | | |
| 12. Proceeds from investments sold, matured or repaid: | | |
| 12.1 Bonds | 5,857,577 | 151,125,273 |
| 12.2 Stocks | | |
| 12.3 Mortgage loans | | |
| 12.4 Real estate | | |
| 12.5 Other invested assets | 14,683,444 | 19,564,719 |
| 12.6 Net gains or (losses) on cash, cash equivalents and short-term investments | | |
| 12.7 Miscellaneous proceeds | | |
| 12.8 Total investment proceeds (Lines 12.1 to 12.7) | 20,541,021 | 170,689,992 |
| 13. Cost of investments acquired (long-term only): | | |
| 13.1 Bonds | 9,498,894 | 19,990,418 |
| 13.2 Stocks | | |
| 13.3 Mortgage loans | | |
| 13.4 Real estate | | |
| 13.5 Other invested assets | 15,598,961 | 12,140,329 |
| 13.6 Miscellaneous applications | | |
| 13.7 Total investments acquired (Lines 13.1 to 13.6) | 25,097,855 | 32,130,747 |
| 14. Net increase (decrease) in contract loans and premium notes | | |
| 15. Net cash from investments (Line 12.8 minus Line 13.7 minus Line 14) | (4,556,834) | 138,559,245 |
| Cash from Financing and Miscellaneous Sources | | |
| 16. Cash provided (applied): | | |
| 16.1 Surplus notes, capital notes | | |
| 16.2 Capital and paid in surplus, less treasury stock | | (24,045,335) |
| 16.3 Borrowed funds | | |
| 16.4 Net deposits on deposit-type contracts and other insurance liabilities | | |
| 16.5 Dividends to stockholders | | 17,954,665 |
| 16.6 Other cash provided (applied) | 10,519,542 | 15,399,194 |
| 17. Net cash from financing and miscellaneous sources (Lines 16.1 to 16.4 minus Line 16.5 plus Line 16.6) | 10,519,542 | (26,600,806) |
| RECONCILIATION OF CASH, CASH EQUIVALENTS AND SHORT-TERM INVESTMENTS | | |
| 18. Net change in cash, cash equivalents and short-term investments (Line 11, plus Lines 15 and 17) | 1,106,459 | (3,158,446) |
| 19. Cash, cash equivalents and short-term investments: | | |
| 19.1 Beginning of year | 337,300 | 3,495,746 |
| 19.2 End of year (Line 18 plus Line 19.1) | 1,443,759 | 337,300 |

Note: Supplemental disclosures of cash flow information for non-cash transactions:

| | | | |
|---------|--|-------|-------------|
| 20.0001 | 2.0 - Net Investment Income | 5,535 | |
| 20.0002 | 12.1 - Proceeds from investments sold, matured or repaid - Bonds | | 133,960,863 |
| 20.0003 | 13.1 - Cost of investments acquired - Bonds | 5,535 | 29,223 |
| 20.0004 | 16.2 - Capital and paid in surplus, less treasury stock | | 23,998,252 |
| 20.0005 | 16.5 - Dividends to stockholders | | 17,954,665 |

NONE Underwriting and Investment Exhibit - Part 1

NONE Underwriting and Investment Exhibit - Part 1A

UNDERWRITING AND INVESTMENT EXHIBIT

PART 1B – PREMIUMS WRITTEN

| Line of Business | 1 | Reinsurance Assumed | | Reinsurance Ceded | | 6 |
|--|---------------------------|-----------------------------|-------------------------------------|---------------------------|-----------------------------------|---|
| | Direct Business (a) | 2 From Affiliates | 3 From Non- Affiliates | 4 To Affiliates | 5 To Non- Affiliates | Net Premiums Written Cols. 1 + 2 + 3 - 4 - 5 |
| 1. Fire | 262,199 | | | 262,199 | | |
| 2. Allied lines | 234,025 | | | 234,025 | | |
| 3. Farmowners multiple peril | | | | | | |
| 4. Homeowners multiple peril | | | | | | |
| 5. Commercial multiple peril | 3,252,193 | | | 3,252,193 | | |
| 6. Mortgage guaranty | | | | | | |
| 8. Ocean marine | | | | | | |
| 9. Inland marine | 11,741 | | | 11,741 | | |
| 10. Financial guaranty | | | | | | |
| 11.1 Medical professional liability--occurrence | | | | | | |
| 11.2 Medical professional liability--claims-made | | | | | | |
| 12. Earthquake | (1,746) | | | (1,746) | | |
| 13. Group accident and health | | | | | | |
| 14. Credit accident and health (group and individual) | | | | | | |
| 15. Other accident and health | | | | | | |
| 16. Workers' compensation | 29,154,015 | | | 29,154,015 | | |
| 17.1 Other liability—occurrence | 2,031,979 | | | 2,031,979 | | |
| 17.2 Other liability—claims-made | | | | | | |
| 17.3 Excess workers' compensation | | | | | | |
| 18.1 Products liability—occurrence | 53,292 | | | 53,292 | | |
| 18.2 Products liability—claims-made | | | | | | |
| 19.1,19.2 Private passenger auto liability | (1) | | | (1) | | |
| 19.3,19.4 Commercial auto liability | 574,644 | | | 574,644 | | |
| 21. Auto physical damage | 255,747 | | | 255,747 | | |
| 22. Aircraft (all perils) | | | | | | |
| 23. Fidelity | 24,749 | | | 24,749 | | |
| 24. Surety | | | | | | |
| 26. Burglary and theft | 13,459 | | | 13,459 | | |
| 27. Boiler and machinery | 23,582 | | | 23,582 | | |
| 28. Credit | | | | | | |
| 29. International | | | | | | |
| 30. Warranty | | | | | | |
| 31. Reinsurance-nonproportional assumed property | X X X | | | | | |
| 32. Reinsurance-nonproportional assumed liability | X X X | | | | | |
| 33. Reinsurance-nonproportional assumed financial lines | X X X | | | | | |
| 34. Aggregate write-ins for other lines of business | | | | | | |
| 35. TOTALS | 35,889,878 | | | 35,889,878 | | |

| DETAILS OF WRITE-IN LINES | | | | | | |
|---|--|--|--|--|--|--|
| 3401. | | | | | | |
| 3402. | | | | | | |
| 3403. | | | | | | |
| 3498. Sum of remaining write-ins for Line 34 from overflow page | | | | | | |
| 3499. Totals (Lines 3401 through 3403 plus 3498) (Line 34 above) | | | | | | |

(a) Does the company's direct premiums written include premiums recorded on an installment basis? Yes [X] No []

If yes: 1. The amount of such installment premiums \$ 20,175,812

2. Amount at which such installment premiums would have been reported had they been recorded on an annualized basis \$ 40,689,992

UNDERWRITING AND INVESTMENT EXHIBIT PART 2 – LOSSES PAID AND INCURRED

| Line of Business | Losses Paid Less Salvage | | | | 5 Net Losses Unpaid Current Year (Part 2A, Col. 8) | 6 Net Losses Unpaid Prior Year | 7 Losses Incurred Current Year (Cols. 4 + 5 - 6) | 8 Percentage of Losses Incurred (Col. 7, Part 2) to Premiums Earned (Col. 4, Part 1) |
|---|--------------------------|-----------------------------|-------------------------------|--|--|---|--|---|
| | 1 Direct Business | 2 Reinsurance Assumed | 3 Reinsurance Recovered | 4 Net Payments (Cols. 1 + 2 - 3) | | | | |
| 1. Fire | 2,405 | | 2,405 | | | | | |
| 2. Allied lines | 24,899 | | 24,899 | | | | | |
| 3. Farmowners multiple peril | | | | | | | | |
| 4. Homeowners multiple peril | | | | | | | | |
| 5. Commercial multiple peril | 21,640,698 | | 21,640,698 | | | | | |
| 6. Mortgage guaranty | | | | | | | | |
| 8. Ocean marine | | | | | | | | |
| 9. Inland marine | (67,336) | | (67,336) | | | | | |
| 10. Financial guaranty | | | | | | | | |
| 11.1 Medical professional liability—occurrence | | | | | | | | |
| 11.2 Medical professional liability—claims-made | | | | | | | | |
| 12. Earthquake | | | | | | | | |
| 13. Group accident and health | | | | | | | | |
| 14. Credit accident and health (group and individual) | | | | | | | | |
| 15. Other accident and health | | | | | | | | |
| 16. Workers' compensation | 215,348,472 | | 215,348,472 | | | | | |
| 17.1 Other liability—occurrence | 24,397,665 | | 24,397,665 | | | | | |
| 17.2 Other liability—claims-made | | | | | | | | |
| 17.3 Excess workers' compensation | | | | | | | | |
| 18.1 Products liability—occurrence | 1,771,894 | | 1,771,894 | | | | | |
| 18.2 Products liability—claims-made | | | | | | | | |
| 19.1,19.2 Private passenger auto liability | 176 | | 176 | | | | | |
| 19.3,19.4 Commercial auto liability | 48,735,048 | | 48,735,048 | | | | | |
| 21. Auto physical damage | 2,066,523 | | 2,066,523 | | | | | |
| 22. Aircraft (all perils) | | | | | | | | |
| 23. Fidelity | 754,654 | | 754,654 | | | | | |
| 24. Surety | | | | | | | | |
| 26. Burglary and theft | 5,651 | | 5,651 | | | | | |
| 27. Boiler and machinery | | | | | | | | |
| 28. Credit | | | | | | | | |
| 29. International | | | | | | | | |
| 30. Warranty | | | | | | | | |
| 31. Reinsurance-nonproportional assumed property | X X X | | | | | | | |
| 32. Reinsurance-nonproportional assumed liability | X X X | | | | | | | |
| 33. Reinsurance-nonproportional assumed financial lines | X X X | | | | | | | |
| 34. Aggregate write-ins for other lines of business | | | | | | | | |
| 35. TOTALS | 314,680,749 | | 314,680,749 | | | | | |

| DETAILS OF WRITE-IN LINES | | | | | | | |
|--|--|--|--|--|--|--|--|
| 3401. | | | | | | | |
| 3402. | | | | | | | |
| 3403. | | | | | | | |
| 3498. Sum of remaining write-ins for Line 34 from overflow page | | | | | | | |
| 3499. Totals (Lines 3401 through 3403 plus 3498) (Line 34 above) | | | | | | | |

UNDERWRITING AND INVESTMENT EXHIBIT PART 2A – UNPAID LOSSES AND LOSS ADJUSTMENT EXPENSES

| Line of Business | Reported Losses | | | | Incurred But Not Reported | | | 8 Net Losses Unpaid (Cols. 4 + 5 + 6 - 7) | 9 Net Unpaid Loss Adjustment Expenses |
|--|-----------------|--------------------------|-------------------------------------|---|---------------------------|--------------------------|------------------------|---|--|
| | 1 Direct | 2 Reinsurance Assumed | 3 Deduct Reinsurance Recoverable | 4 Net Losses Excl. Incurred But Not Reported (Cols. 1 + 2 - 3) | 5 Direct | 6 Reinsurance Assumed | 7 Reinsurance Ceded | | |
| 1. Fire | | | | | 72,068 | | 72,068 | | |
| 2. Allied lines | 77,018 | | 77,018 | | 25,614 | | 25,614 | | |
| 3. Farmowners multiple peril | | | | | | | | | |
| 4. Homeowners multiple peril | | | | | | | | | |
| 5. Commercial multiple peril | 30,850,933 | | 30,850,933 | | 18,647,027 | | 18,647,027 | | |
| 6. Mortgage guaranty | | | | | | | | | |
| 8. Ocean marine | | | | | | | | | |
| 9. Inland marine | | | | | (56,241) | | (56,241) | | |
| 10. Financial guaranty | | | | | | | | | |
| 11.1 Medical professional liability—occurrence | | | | | | | | | |
| 11.2 Medical professional liability—claims-made | | | | | | | | | |
| 12. Earthquake | | | | | | | | | |
| 13. Group accident and health | | | | | | | | (a) | |
| 14. Credit accident and health (group and individual) | | | | | | | | | |
| 15. Other accident and health | | | | | | | | (a) | |
| 16. Workers' compensation | 476,462,094 | | 476,462,094 | | 367,064,923 | | 367,064,923 | | |
| 17.1 Other liability—occurrence | 39,127,958 | | 39,127,958 | | 17,692,170 | | 17,692,170 | | |
| 17.2 Other liability—claims-made | | | | | | | | | |
| 17.3 Excess workers' compensation | | | | | 2,762 | | 2,762 | | |
| 18.1 Products liability—occurrence | 5,763,702 | | 5,763,702 | | 5,785,725 | | 5,785,725 | | |
| 18.2 Products liability—claims-made | | | | | | | | | |
| 19.1,19.2 Private passenger auto liability | 122 | | 122 | | | | | | |
| 19.3,19.4 Commercial auto liability | 64,202,564 | | 64,202,564 | | 3,741,612 | | 3,741,612 | | |
| 21. Auto physical damage | | | | | 340,592 | | 340,592 | | |
| 22. Aircraft (all perils) | | | | | | | | | |
| 23. Fidelity | 22,140 | | 22,140 | | (11,060) | | (11,060) | | |
| 24. Surety | | | | | | | | | |
| 26. Burglary and theft | 3,250 | | 3,250 | | (12,765) | | (12,765) | | |
| 27. Boiler and machinery | | | | | 358 | | 358 | | |
| 28. Credit | | | | | | | | | |
| 29. International | | | | | | | | | |
| 30. Warranty | | | | | | | | | |
| 31. Reinsurance-nonproportional assumed property | X X X | | | | X X X | | | | |
| 32. Reinsurance-nonproportional assumed liability | X X X | | | | X X X | | | | |
| 33. Reinsurance-nonproportional assumed financial lines | X X X | | | | X X X | | | | |
| 34. Aggregate write-ins for other lines of business | | | | | | | | | |
| 35. TOTALS | 616,509,781 | | 616,509,781 | | 413,292,785 | | 413,292,785 | | |
| DETAILS OF WRITE-IN LINES | | | | | | | | | |
| 3401. | | | | | | | | | |
| 3402. | | | | | | | | | |
| 3403. | | | | | | | | | |
| 3498. Sum of remaining write-ins for Line 34 from overflow page | | | | | | | | | |
| 3499. Totals (Lines 3401 through 3403 plus 3498) (Line 34 above) | | | | | | | | | |

(a) Including \$ 0 for present value of life indemnity claims.

UNDERWRITING AND INVESTMENT EXHIBIT

PART 3 - EXPENSES

| | 1 | 2 | 3 | 4 |
|--|-----------------------------|--------------------------------|------------------------|-------------|
| | Loss Adjustment Expenses | Other Underwriting Expenses | Investment Expenses | Total |
| 1. Claim adjustment services: | | | | |
| 1.1 Direct | 17,577,729 | | | 17,577,729 |
| 1.2 Reinsurance assumed | | | | |
| 1.3 Reinsurance ceded | 17,577,729 | | | 17,577,729 |
| 1.4 Net claim adjustment services (1.1 + 1.2 - 1.3) | | | | |
| 2. Commission and brokerage: | | | | |
| 2.1 Direct, excluding contingent | | 2,135,799 | | 2,135,799 |
| 2.2 Reinsurance assumed, excluding contingent | | | | |
| 2.3 Reinsurance ceded, excluding contingent | | 2,135,799 | | 2,135,799 |
| 2.4 Contingent—direct | | | | |
| 2.5 Contingent—reinsurance assumed | | | | |
| 2.6 Contingent—reinsurance ceded | | | | |
| 2.7 Policy and membership fees | | | | |
| 2.8 Net commission and brokerage (2.1 + 2.2 - 2.3 + 2.4 + 2.5 - 2.6 + 2.7) | | | | |
| 3. Allowances to manager and agents | | | | |
| 4. Advertising | | | 27 | 27 |
| 5. Boards, bureaus and associations | | | 1 | 1 |
| 6. Surveys and underwriting reports | | | | |
| 7. Audit of assureds' records | | | | |
| 8. Salary and related items: | | | | |
| 8.1 Salaries | | | 79,738 | 79,738 |
| 8.2 Payroll taxes | | | 76 | 76 |
| 9. Employee relations and welfare | | | 2,029 | 2,029 |
| 10. Insurance | | | 371 | 371 |
| 11. Directors' fees | | | | |
| 12. Travel and travel items | | | 2,528 | 2,528 |
| 13. Rent and rent items | | | 738 | 738 |
| 14. Equipment | | | 2,358 | 2,358 |
| 15. Cost or depreciation of EDP equipment and software | | | 2,100 | 2,100 |
| 16. Printing and stationery | | | 323 | 323 |
| 17. Postage, telephone and telegraph, exchange and express | | | 2,822 | 2,822 |
| 18. Legal and auditing | | | 1,768 | 1,768 |
| 19. Totals (Lines 3 to 18) | | | 94,879 | 94,879 |
| 20. Taxes, licenses and fees: | | | | |
| 20.1 State and local insurance taxes deducting guaranty association credits of \$ 0 | | | | |
| 20.2 Insurance department licenses and fees | | | | |
| 20.3 Gross guaranty association assessments | | | | |
| 20.4 All other (excluding federal and foreign income and real estate) | | | | |
| 20.5 Total taxes, licenses and fees (20.1 + 20.2 + 20.3 + 20.4) | | | | |
| 21. Real estate expenses | | | | |
| 22. Real estate taxes | | | | |
| 23. Reimbursements by uninsured plans | | | | |
| 24. Aggregate write-ins for miscellaneous expenses | | | 28,309 | 28,309 |
| 25. Total expenses incurred | | | 123,188 | (a) 123,188 |
| 26. Less unpaid expenses—current year | | | | |
| 27. Add unpaid expenses—prior year | | | | |
| 28. Amounts receivable relating to uninsured plans, prior year | | | | |
| 29. Amounts receivable relating to uninsured plans, current year | | | | |
| 30. TOTAL EXPENSES PAID (Lines 25 - 26 + 27 - 28 + 29) | | | 123,188 | 123,188 |

| DETAILS OF WRITE-IN LINES | | | | |
|--|--|--|--------|--------|
| 2401. Other expenses | | | 28,309 | 28,309 |
| 2402. | | | | |
| 2403. | | | | |
| 2498. Sum of remaining write-ins for Line 24 from overflow page | | | | |
| 2499. Totals (Lines 2401 through 2403 plus 2498) (Line 24 above) | | | 28,309 | 28,309 |

(a) Includes management fees of \$ 123,188 to affiliates and \$ 0 to non-affiliates.

EXHIBIT OF NET INVESTMENT INCOME

| | 1 Collected During Year | 2 Earned During Year |
|---|-------------------------------|----------------------------|
| 1. U.S. Government bonds | (a) 784,585 | 804,429 |
| 1.1 Bonds exempt from U.S. tax | (a) 229,167 | 229,683 |
| 1.2 Other bonds (unaffiliated) | (a) 1,149,100 | 1,151,576 |
| 1.3 Bonds of affiliates | (a) | |
| 2.1 Preferred stocks (unaffiliated) | (b) | |
| 2.11 Preferred stocks of affiliates | (b) | |
| 2.2 Common stocks (unaffiliated) | | |
| 2.21 Common stocks of affiliates | | |
| 3. Mortgage loans | (c) | |
| 4. Real estate | (d) | |
| 5. Contract loans | | |
| 6. Cash, cash equivalents and short-term investments | (e) 770 | 770 |
| 7. Derivative instruments | (f) | |
| 8. Other invested assets | | |
| 9. Aggregate write-ins for investment income | 5,965 | 5,965 |
| 10. Total gross investment income | 2,169,587 | 2,192,423 |
| 11. Investment expenses | | (g) 123,188 |
| 12. Investment taxes, licenses and fees, excluding federal income taxes | | (g) |
| 13. Interest expense | | (h) |
| 14. Depreciation on real estate and other invested assets | | (i) |
| 15. Aggregate write-ins for deductions from investment income | | |
| 16. Total deductions (Lines 11 through 15) | | 123,188 |
| 17. Net investment income (Line 10 minus Line 16) | | 2,069,235 |

| DETAILS OF WRITE-IN LINES | | |
|---|-------------|-------|
| 0901. Miscellaneous Income/(Expense) | 5,965 | 5,965 |
| 0902. | | |
| 0903. | | |
| 0998. Summary of remaining write-ins for Line 09 from overflow page | | |
| 0999. Totals (Lines 0901 through 0903 plus 0998) (Line 09 above) | 5,965 | 5,965 |
| 1501. | NONE | |
| 1502. | | |
| 1503. | | |
| 1598. Summary of remaining write-ins for Line 15 from overflow page | | |
| 1599. Totals (Lines 1501 through 1503 plus 1598) (Line 15 above) | | |

- (a) Includes \$ 29,244 accrual of discount less \$ 333,525 amortization of premium and less \$ 0 paid for accrued interest on purchases.
- (b) Includes \$ 0 accrual of discount less \$ 0 amortization of premium and less \$ 0 paid for accrued dividends on purchases.
- (c) Includes \$ 0 accrual of discount less \$ 0 amortization of premium and less \$ 0 paid for accrued interest on purchases.
- (d) Includes \$ 0 for company's occupancy of its own buildings; and excludes \$ 0 interest on encumbrances.
- (e) Includes \$ 0 accrual of discount less \$ 0 amortization of premium and less \$ 0 paid for accrued interest on purchases.
- (f) Includes \$ 0 accrual of discount less \$ 0 amortization of premium.
- (g) Includes \$ 0 investment expenses and \$ 0 investment taxes, licenses and fees, excluding federal income taxes, attributable to segregated and Separate Accounts.
- (h) Includes \$ 0 interest on surplus notes and \$ 0 interest on capital notes.
- (i) Includes \$ 0 depreciation on real estate and \$ 0 depreciation on other invested assets.

EXHIBIT OF CAPITAL GAINS (LOSSES)

| | 1 Realized Gain (Loss) on Sales or Maturity | 2 Other Realized Adjustments | 3 Total Realized Capital Gain (Loss) (Columns 1 + 2) | 4 Change in Unrealized Capital Gain (Loss) | 5 Change in Unrealized Foreign Exchange Capital Gain (Loss) |
|--|---|---------------------------------------|---|--|--|
| 1. U.S. Government bonds | (127) | | (127) | | |
| 1.1 Bonds exempt from U.S. tax | | | | 10,751 | |
| 1.2 Other bonds (unaffiliated) | 40,557 | | 40,557 | | |
| 1.3 Bonds of affiliates | | | | | |
| 2.1 Preferred stocks (unaffiliated) | | | | | |
| 2.11 Preferred stocks of affiliates | | | | | |
| 2.2 Common stocks (unaffiliated) | | | | | |
| 2.21 Common stocks of affiliates | | | | | |
| 3. Mortgage loans | | | | | |
| 4. Real estate | | | | | |
| 5. Contract loans | | | | | |
| 6. Cash, cash equivalents and short-term investments | | | | | |
| 7. Derivative instruments | | | | | |
| 8. Other invested assets | | | | | |
| 9. Aggregate write-ins for capital gains (losses) | | | | | |
| 10. Total capital gains (losses) | 40,430 | | 40,430 | 10,751 | |

| DETAILS OF WRITE-IN LINES | | | | | |
|---|-------------|--|--|--|--|
| 0901. | NONE | | | | |
| 0902. | | | | | |
| 0903. | | | | | |
| 0998. Summary of remaining write-ins for Line 09 from overflow page | | | | | |
| 0999. Totals (Lines 0901 through 0903 plus 0998) (Line 09 above) | | | | | |

EXHIBIT OF NONADMITTED ASSETS

| | 1 Current Year Total Nonadmitted Assets | 2 Prior Year Total Nonadmitted Assets | 3 Change in Total Nonadmitted Assets (Col. 2 - Col. 1) |
|--|---|--|---|
| 1. Bonds (Schedule D) | | | |
| 2. Stocks (Schedule D): | | | |
| 2.1 Preferred stocks | | | |
| 2.2 Common stocks | | | |
| 3. Mortgage loans on real estate (Schedule B): | | | |
| 3.1 First liens | | | |
| 3.2 Other than first liens | | | |
| 4. Real estate (Schedule A): | | | |
| 4.1 Properties occupied by the company | | | |
| 4.2 Properties held for the production of income | | | |
| 4.3 Properties held for sale | | | |
| 5. Cash (Schedule E - Part 1), cash equivalents (Schedule E - Part 2) and short-term investments (Schedule DA) | | | |
| 6. Contract loans | | | |
| 7. Derivatives (Schedule DB) | | | |
| 8. Other invested assets (Schedule BA) | | | |
| 9. Receivables for securities | | | |
| 10. Securities lending reinvested collateral assets (Schedule DL) | | | |
| 11. Aggregate write-ins for invested assets | | | |
| 12. Subtotals, cash and invested assets (Lines 1 to 11) | | | |
| 13. Title plants (for Title insurers only) | | | |
| 14. Investment income due and accrued | | | |
| 15. Premiums and considerations: | | | |
| 15.1 Uncollected premiums and agents' balances in the course of collection | | | |
| 15.2 Deferred premiums, agents' balances and installments booked but deferred and not yet due | | | |
| 15.3 Accrued retrospective premiums | | | |
| 16. Reinsurance: | | | |
| 16.1 Amounts recoverable from reinsurers | | | |
| 16.2 Funds held by or deposited with reinsured companies | | | |
| 16.3 Other amounts receivable under reinsurance contracts | | | |
| 17. Amounts receivable relating to uninsured plans | | | |
| 18.1 Current federal and foreign income tax recoverable and interest thereon | | | |
| 18.2 Net deferred tax asset | 1,995,245 | | (1,995,245) |
| 19. Guaranty funds receivable or on deposit | | | |
| 20. Electronic data processing equipment and software | | | |
| 21. Furniture and equipment, including health care delivery assets | | | |
| 22. Net adjustment in assets and liabilities due to foreign exchange rates | | | |
| 23. Receivables from parent, subsidiaries and affiliates | | | |
| 24. Health care and other amounts receivable | | | |
| 25. Aggregate write-ins for other-than-invested assets | | | |
| 26. Total assets excluding Separate Accounts, Segregated Accounts and Protected Cell Accounts (Lines 12 to 25) | 1,995,245 | | (1,995,245) |
| 27. From Separate Accounts, Segregated Accounts and Protected Cell Accounts | | | |
| 28. Total (Lines 26 and 27) | 1,995,245 | | (1,995,245) |

| DETAILS OF WRITE-IN LINES | | | |
|---|--|--|--|
| 1101. | | | |
| 1102. | | | |
| 1103. | | | |
| 1198. Summary of remaining write-ins for Line 11 from overflow page | | | |
| 1199. Totals (Lines 1101 through 1103 plus 1198) (Line 11 above) | | | |
| 2501. | | | |
| 2502. | | | |
| 2503. | | | |
| 2598. Summary of remaining write-ins for Line 25 from overflow page | | | |
| 2599. Totals (Lines 2501 through 2503 plus 2598) (Line 25 above) | | | |

NOTES TO FINANCIAL STATEMENTS

Note 1 - Summary of Significant Accounting Policies

A. Accounting Practices

Effective January 1, 2001, and subject to any deviations prescribed or permitted by the State of Wisconsin, the accompanying financial statements of Wausau Underwriters Insurance Company (the "Company") have been prepared in conformity with the National Association of Insurance Commissioners ("NAIC") *Accounting Practices and Procedures Manual* ("APP Manual").

The Company does not have any prescribed or permitted accounting practices.

| | State of Domicile | 2014 | 2013 |
|---|-------------------|--------------|--------------|
| <u>NET INCOME</u> | | | |
| WUIC state basis (Page 4, Line 20, Columns 1 & 2) | WI | \$ 2,602,035 | \$ 8,961,581 |
| State Prescribed Practices: NONE | | - | - |
| State Permitted Practices: NONE | | - | - |
| NAIC SAP | | \$ 2,602,035 | \$ 8,961,581 |

| | State of Domicile | 2014 | 2013 |
|---|-------------------|---------------|---------------|
| <u>SURPLUS</u> | | | |
| WUIC state basis (Page 3, Line 37, Columns 1 & 2) | WI | \$ 64,539,228 | \$ 61,131,966 |
| State Prescribed Practices: NONE | | - | - |
| State Permitted Practices: NONE | | - | - |
| NAIC SAP | | \$ 64,539,228 | \$ 61,131,966 |

B. Use of Estimates in the Preparation of the Financial Statements

The preparation of financial statements requires management to make estimates and assumptions that affect the reported amounts of assets, liabilities, revenues, and expenses. It also requires estimates in the disclosure of contingent assets and liabilities. Actual results could differ from these estimates.

C. Accounting Policies

Premiums are earned over the terms of the related policies and reinsurance contracts. Unearned premium reserves are established to cover the unexpired portion of premiums written. Such reserves are computed by pro-rata methods. Expenses incurred in connection with acquiring new insurance business, including acquisition costs such as sales commissions, are charged to operations as incurred. Expenses incurred are reduced for ceding allowances received or receivable.

In addition, the Company applies the following accounting policies, where applicable:

1. Short term investments are carried at cost, adjusted where appropriate for amortization of premium or discount, or fair value as specified by the Purposes and Procedures Manual of the NAIC Investment Analysis Office (IAO Manual).
2. Bonds are carried at cost, adjusted where appropriate for amortization of premium or discount, or fair value as specified by the IAO Manual.
3. Common stocks are carried at fair value, except that investments in stocks of subsidiaries, controlled and affiliated ("SCA") companies are carried according to Note 1C(7).
4. Preferred stocks are carried at cost or fair value as specified by the IAO Manual. Preferred stocks of SCA companies are carried according to Note 1C(7).
5. Mortgage loans are carried at unpaid principal balances, less impairments as specified by the IAO Manual.
6. Mortgage backed/asset backed securities are carried at amortized cost or fair value based on guidance in the IAO Manual. Prepayment assumptions for mortgage backed/asset backed securities are updated monthly. The retrospective adjustment method is used to value all mortgage backed/asset backed securities.
7. Investments in SCA companies are carried in accordance with SSAP No. 97, *Investments in Subsidiary, Controlled, and Affiliated Entities, A Replacement of SSAP No. 88*, and the IAO Manual.
8. Investments in joint ventures, partnerships, and limited liability companies are carried in accordance with SSAP No. 48, *Joint Ventures, Partnerships and Limited Liability Companies*, and the IAO Manual.
9. Derivative Securities, refer to Note 8.
10. Investment income is anticipated as a factor in the premium deficiency calculation, in accordance with SSAP No. 53, *Property Casualty Contracts - Premiums*. Refer to Note 30.
11. Unpaid losses and loss adjustment expenses include an amount determined from individual case estimates and an amount, based on past experience, for losses and loss adjustment expenses incurred but not reported. Such liabilities are necessarily based on assumptions and estimates, and while management believes the amount is adequate, the ultimate liability may be in excess of or less than the amount provided. The methods, for making

NOTES TO FINANCIAL STATEMENTS

such estimates and for establishing the resulting liability, are continually reviewed and follow current standards of practice. Any adjustments to the liability are reflected in the period that they are determined.

12. The Company did not change its capitalization policy in 2014.

13. The Company has no pharmaceutical rebate receivables.

Note 2 - Accounting Changes and Correction of Errors

There were no material changes in accounting principles and/or correction of errors.

Note 3 - Business Combinations and Goodwill

A. Statutory Purchase Method

The Company did not enter into any statutory purchases during the year.

B. Statutory Mergers

The Company did not enter into any statutory mergers during the year.

C. Impairment Loss

The Company did not recognize an impairment loss during the period.

Note 4 - Discontinued Operations

The Company has no discontinued operations.

Note 5 - Investments

A. Mortgage Loans, including Mezzanine Real Estate Loans

The Company does not invest in mortgage loans.

B. Troubled Debt Restructuring for Creditors

Not applicable

C. Reverse Mortgages

The Company has no reverse mortgages.

D. Loan Backed Securities

The Company does not hold investments in Loan-Backed securities.

E. Repurchase Agreements and Securities Lending

1. The Company has not entered into any repurchase agreements during the year. Refer to Note 17B for the policy on requiring collateral related to securities lending.

2. The Company has not pledged any of its assets as collateral as of December 31, 2014.

3. Aggregate Amount of Contractually open cash collateral positions:

a. Aggregate Amount Cash Collateral Received

| | <u>Fair Value</u> |
|-------------------------------|-------------------|
| 1. Repurchase Agreement | |
| (a) Open | |
| (b) 30 Days or Less | |
| (c) 31 to 60 Days | |
| (d) 61 to 90 Days | |
| (e) Greater Than 90 Days | |
| (f) Sub-Total | |
| (g) Securities Received | |
| (h) Total Collateral Received | |
| 2. Securities Lending | |
| (a) Open | \$1,968,017 |
| (b) 30 Days or Less | |
| (c) 31 to 60 Days | |
| (d) 61 to 90 Days | |
| (e) Greater Than 90 Days | |
| (f) Sub-Total | \$1,968,017 |
| (g) Securities Received | \$1,459,655 |

NOTES TO FINANCIAL STATEMENTS

| | | |
|--|-----------------------------|-----------------------------|
| (h) Total Collateral Received | <u>\$3,427,672</u> | |
| 3. Dollar Repurchase Agreement | | |
| (a) Open | <u> </u> | |
| (b) 30 Days or Less | <u> </u> | |
| (c) 31 to 60 Days | <u> </u> | |
| (d) 61 to 90 Days | <u> </u> | |
| (e) Greater Than 90 Days | <u> </u> | |
| (f) Sub-Total | <u> </u> | |
| (g) Securities Received | <u> </u> | |
| (h) Total Collateral Received | <u> </u> | |
| b. The aggregate fair value of all securities acquired from the sale, trade or use of the accepted collateral (reinvested collateral) | | |
| | <u>\$1,968,017</u> | |
| c. All collateral is received in the form of cash and/or securities equal to or in excess of 102% of the loaned value and are maintained in a separate custody account. Cash collateral is reinvested into short-term investments as outlined in the terms of the investment agreement. Per the terms of the investment agreement the Company has the right and ability to redeem any eligible securities on short notice. | | |
| 4. Securities Lending Transactions Administered by an Affiliated Agent | | |
| The Company's security lending transactions are not administered by an affiliate agent. | | |
| 5. Collateral Reinvestment | | |
| a. Aggregate Amount Cash Collateral Reinvested | | |
| | <u>Amortized Cost</u> | <u>Fair Value</u> |
| 1. Repurchase Agreement | | |
| (a) Open | <u> </u> | <u> </u> |
| (b) 30 Days or Less | <u> </u> | <u> </u> |
| (c) 31 to 60 Days | <u> </u> | <u> </u> |
| (d) 61 to 90 Days | <u> </u> | <u> </u> |
| (e) 91 to 120 Days | <u> </u> | <u> </u> |
| (f) 121 to 180 Days | <u> </u> | <u> </u> |
| (g) 181 to 365 Days | <u> </u> | <u> </u> |
| (h) 1 to 2 Years | <u> </u> | <u> </u> |
| (i) 2 to 3 Years | <u> </u> | <u> </u> |
| (j) Greater Than 3 Years | <u> </u> | <u> </u> |
| (k) Sub-Total | <u> </u> | <u> </u> |
| (l) Securities Received | <u> </u> | <u> </u> |
| (m) Total Collateral Reinvested | <u> </u> | <u> </u> |
| 2. Securities Lending | | |
| (a) Open | <u> </u> | <u> </u> |
| (b) 30 Days or Less | <u>\$1,009,364</u> | <u>\$1,009,313</u> |
| (c) 31 to 60 Days | <u>\$415,105</u> | <u>\$415,111</u> |
| (d) 61 to 90 Days | <u>\$543,596</u> | <u>\$543,593</u> |
| (e) 91 to 120 Days | <u> </u> | <u> </u> |
| (f) 121 to 180 Days | <u> </u> | <u> </u> |
| (g) 181 to 365 Days | <u> </u> | <u> </u> |
| (h) 1 to 2 Years | <u> </u> | <u> </u> |
| (i) 2 to 3 Years | <u> </u> | <u> </u> |
| (j) Greater Than 3 Years | <u> </u> | <u> </u> |
| (k) Sub-Total | <u>\$1,968,065</u> | <u>\$1,968,017</u> |
| (l) Securities Received | <u> </u> | <u> </u> |
| (m) Total Collateral Reinvested | <u>\$1968,065</u> | <u>\$1,968,017</u> |
| 3. Dollar Repurchase Agreement | | |
| (a) Open | <u> </u> | <u> </u> |
| (b) 30 Days or Less | <u> </u> | <u> </u> |
| (c) 31 to 60 Days | <u> </u> | <u> </u> |
| (d) 61 to 90 Days | <u> </u> | <u> </u> |
| (e) 91 to 120 Days | <u> </u> | <u> </u> |
| (f) 121 to 180 Days | <u> </u> | <u> </u> |
| (g) 181 to 365 Days | <u> </u> | <u> </u> |
| (h) 1 to 2 Years | <u> </u> | <u> </u> |

NOTES TO FINANCIAL STATEMENTS

| | | | |
|---------------------------------|--|--|--|
| (i) 2 to 3 Years | | | |
| (j) Greater Than 3 Years | | | |
| (k) Sub-Total | | | |
| (l) Securities Received | | | |
| (m) Total Collateral Reinvested | | | |

b. The reporting entity's sources of cash that it uses to return the cash collateral is dependent on the liquidity of the current market conditions. Under current conditions, the reporting entity could liquidate all or a portion of its cash collateral reinvestment securities in order to meet the collateral calls that could come due under a worst-case scenario.

6. The securities collateral currently not listed on the balance sheet, which has been pledged to the Company against a borrowed position is not restricted from use in the event the Company wanted to use it.

7. The Company's securities lending program is an open transaction (not contract based), and as such, the Company can recall the security lent at any time.

F. Real Estate

The Company does not own real estate.

G. Investments in Low-Income Housing Tax Credits

The Company does not hold investments in low-income housing tax credits.

H. Restricted Assets

1. Restricted Assets (Including Pledged)

| Restricted Asset Category | Gross Restricted | | | | | | | Percentage | | |
|--|--|--|--|------------------|-----------------------|-----------------------------------|--|----------------------------------|--|----|
| | Current Year | | | | | 6 | 7 | 8 | 9 | 10 |
| | 1 | 2 | 3 | 4 | 5 | | | | | |
| Total General Account (G/A) | G/A Supporting Protected Cell Account Activity (a) | Total Protected Cell Account Restricted Assets | Protected Cell Account Supporting G/A Activity (b) | Total (1 plus 3) | Total From Prior Year | Increase / (Decrease) (5 minus 6) | Total Current Year Admitted Restricted | Gross Restricted to Total Assets | Admitted Restricted to Total Admitted Assets | |
| a. Subject to contractual obligation for which liability is not shown | - | - | - | - | \$- | \$- | \$- | \$- | 0% | 0% |
| b. Collateral held under security lending agreements | 1,968,017 | - | - | - | \$1,968,017 | \$1,052,500 | \$915,517 | \$1,968,017 | 2% | 2% |
| c. Subject to repurchase agreements | - | - | - | - | \$- | \$- | \$- | \$- | 0% | 0% |
| d. Subject to reverse repurchase agreements | - | - | - | - | \$- | \$- | \$- | \$- | 0% | 0% |
| e. Subjects to dollar repurchase agreements | - | - | - | - | \$- | \$- | \$- | \$- | 0% | 0% |
| f. Subject to dollar reverse repurchase agreements | - | - | - | - | \$- | \$- | \$- | \$- | 0% | 0% |
| g. Placed under option contracts | - | - | - | - | \$- | \$- | \$- | \$- | 0% | 0% |
| h. Letter stock or securities restricted as to sale – excluding FHLB capital stock | - | - | - | - | \$- | \$- | \$- | \$- | 0% | 0% |
| i. FHLB capital stock | - | - | - | - | \$- | \$- | \$- | \$- | 0% | 0% |
| j. On deposit with states | 8,457,280 | - | - | - | \$8,457,280 | \$13,834,391 | \$(5,377,111) | \$8,457,280 | 9% | 9% |
| k. On deposit with other regulatory bodies | 169,326 | - | - | - | \$169,326 | \$169,181 | \$145 | \$169,326 | 0% | 0% |
| l. Pledged collateral to FHLB (including assets backing funding agreements) | - | - | - | - | \$- | \$- | \$- | \$- | 0% | 0% |

NOTES TO FINANCIAL STATEMENTS

| | | | | | | | | | | |
|---|--------------|-----|-----|-----|--------------|--------------|---------------|--------------|-----|-----|
| m. Pledged as collateral not captured in other categories | - | - | - | - | \$- | \$- | \$- | \$- | 0% | 0% |
| n. Other restricted assets | - | - | - | - | \$- | \$- | \$- | \$- | 0% | 0% |
| o. Total restricted assets | \$10,594,623 | \$- | \$- | \$- | \$10,594,623 | \$15,056,072 | \$(4,461,449) | \$10,594,623 | 11% | 11% |

(a) Subset of column 1

(b) Subset of column 3

2. Detail of Assets Pledged as Collateral Not Captured in Other Categories (Contracts that Share Similar Characteristics, Such as Reinsurance and Derivatives, Are Reported in the Aggregate)

Not applicable

3. Detail of Other Restricted Assets (Contracts that Share Similar Characteristics, Such as Reinsurance and Derivatives, Are Reported in the Aggregate)

Not applicable

I. Working Capital Finance Investments

The Company does not invest in Working Capital Finance Investments.

J. Offsetting and Netting of Assets and Liabilities

Not applicable

K. Structured Notes

Not applicable

Note 6 - Joint Ventures, Partnerships & Limited Liability Companies

- A. Investments in joint ventures, partnerships and limited liability companies that exceed 10% of its admitted assets

The Company has no investments in joint ventures, partnerships, or limited liability companies.

- B. Impairments on joint ventures, partnerships or limited liability companies

The Company does not own any investments in joint ventures, partnerships, and limited liability companies.

Note 7 - Investment Income

- A. Accrued Investment Income

The Company does not admit investment income due and accrued if amounts are over 90 days past due (over 180 days for mortgage loans in default).

- B. Amounts Nonadmitted

No amounts were excluded as of December 31, 2014.

Note 8 - Derivative Instruments

The Company's investment activities do not include derivatives. However, the Company may acquire derivatives as additions to bond, common stock, or preferred stock investments. These derivatives are ancillary to the overall investment and are immaterial to the underlying investment portfolio.

NOTES TO FINANCIAL STATEMENTS

Note 9 - Income Taxes

A. The components of the net deferred tax asset/(liability) at December 31 are as follows:

1.

| | 12/31/2014 | | |
|--|--------------|--------------|--------------------|
| | (1) | (2) | (3) |
| | Ordinary | Capital | (Col 1+2) Total |
| (a) Gross Deferred Tax Assets | \$ 3,397,000 | \$ 2,000 | \$ 3,399,000 |
| (b) Statutory Valuation Allowance Adjustments | - | - | - |
| (c) Adjusted Gross Deferred Tax Assets (1a – 1b) | 3,397,000 | 2,000 | 3,399,000 |
| (d) Deferred Tax Assets Nonadmitted | 1,995,245 | - | 1,995,245 |
| (e) Subtotal Net Admitted Deferred Tax Asset (1c – 1d) | 1,401,755 | 2,000 | 1,403,755 |
| (f) Deferred Tax Liabilities | 426,000 | 115,000 | 541,000 |
| (g) Net Admitted Deferred Tax Asset (Net Deferred Tax Liability) (1e – 1f) | \$ 975,755 | \$ (113,000) | \$ 862,755 |

| | 12/31/2013 | | |
|--|--------------|-------------|--------------------|
| | (4) | (5) | (6) |
| | Ordinary | Capital | (Col 4+5) Total |
| (a) Gross Deferred Tax Assets | \$ 3,681,987 | \$ 89,513 | \$ 3,771,500 |
| (b) Statutory Valuation Allowance Adjustments | 3,297,000 | - | 3,297,000 |
| (c) Adjusted Gross Deferred Tax Assets (1a – 1b) | 384,987 | 89,513 | 474,500 |
| (d) Deferred Tax Assets Nonadmitted | - | - | - |
| (e) Subtotal Net Admitted Deferred Tax Asset (1c – 1d) | 384,987 | 89,513 | 474,500 |
| (f) Deferred Tax Liabilities | 316,650 | 157,850 | 474,500 |
| (g) Net Admitted Deferred Tax Asset (Net Deferred Tax Liability) (1e – 1f) | \$ 68,337 | \$ (68,337) | \$ - |

| | Change | | |
|--|-----------------------|----------------------|--------------------|
| | (7) | (8) | (9) |
| | (Col 1-4) Ordinary | (Col 2-5) Capital | (Col 7+8) Total |
| (a) Gross Deferred Tax Assets | \$ (284,987) | \$ (87,513) | \$ (372,500) |
| (b) Statutory Valuation Allowance Adjustments | (3,297,000) | - | (3,297,000) |
| (c) Adjusted Gross Deferred Tax Assets (1a – 1b) | 3,012,013 | (87,513) | 2,924,500 |
| (d) Deferred Tax Assets Nonadmitted | 1,995,245 | - | 1,995,245 |
| (e) Subtotal Net Admitted Deferred Tax Asset (1c – 1d) | 1,016,768 | (87,513) | 929,255 |
| (f) Deferred Tax Liabilities | 109,350 | (42,850) | 66,500 |
| (g) Net Admitted Deferred Tax Asset (Net Deferred Tax Liability) (1e – 1f) | \$ 907,418 | \$ (44,663) | \$ 862,755 |

2.

| | 12/31/2013 | | |
|--|--------------|------------|--------------------|
| | (1) | (2) | (3) |
| | Ordinary | Capital | (Col 1+2) Total |
| Admission Calculation Components SSAP No. 101 | | | |
| (a) Federal Income Taxes Paid In Prior Years Recoverable Through Loss Carrybacks | \$ - | \$ - | \$ - |
| (b) Adjusted Gross Deferred Tax Assets Expected To Be Realized (Excluding The Amount Of Deferred Tax Assets From 2(a) above) After Application of the Threshold Limitation (The Lesser of 2(b)1 and 2(b)2 Below) | 862,755 | - | 862,755 |
| 1. Adjusted Gross Deferred Tax Assets Expected to be Realized Following the Balance Sheet Date. | 862,755 | - | 862,755 |
| 2. Adjusted Gross Deferred Tax Assets Allowed per Limitation Threshold. | - | - | 9,405,411 |
| (c) Adjusted Gross Deferred Tax Assets (Excluding The Amount of Deferred Tax Assets From 2(a) and 2(b) above) Offset by Gross Deferred Tax Liabilities | 426,000 | 115,000 | 541,000 |
| (d) Deferred Tax Assets Admitted as the result of application of SSAP No. 101 (2(a) + 2(b) + 2(c)) | \$ 1,288,755 | \$ 115,000 | \$ 1,403,755 |

NOTES TO FINANCIAL STATEMENTS

| | 12/31/2013 | | |
|--|-----------------|----------------|---------------------------|
| | (4) Ordinary | (5) Capital | (6) (Col 4+5) Total |
| Admission Calculation Components SSAP No. 101 | | | |
| (a) Federal Income Taxes Paid In Prior Years Recoverable Through Loss Carrybacks | \$ - | \$ - | \$ - |
| (b) Adjusted Gross Deferred Tax Assets Expected To Be Realized (Excluding The Amount Of Deferred Tax Assets From 2(a) above) After Application of the Threshold Limitation (The Lesser of 2(b)1 and 2(b)2 Below) | 384,987 | - | 384,987 |
| 1. Adjusted Gross Deferred Tax Assets Expected to be Realized Following the Balance Sheet Date. | 384,987 | - | 384,987 |
| 2. Adjusted Gross Deferred Tax Assets Allowed per Limitation Threshold. | - | - | 9,169,795 |
| (c) Adjusted Gross Deferred Tax Assets (Excluding The Amount of Deferred Tax Assets From 2(a) and 2(b) above) Offset by Gross Deferred Tax Liabilities | - | 89,513 | 89,513 |
| (d) Deferred Tax Assets Admitted as the result of application of SSAP No. 101 (2(a) + 2(b) + 2(c)) | \$ 384,987 | \$ 89,513 | \$ 474,500 |

| | Change | | |
|--|------------------------------|-----------------------------|---------------------------|
| | (7) (Col 1-4) Ordinary | (8) (Col 2-5) Capital | (9) (Col 7+8) Total |
| Admission Calculation Components SSAP No. 101 | | | |
| (a) Federal Income Taxes Paid In Prior Years Recoverable Through Loss Carrybacks | \$ - | \$ - | \$ - |
| (b) Adjusted Gross Deferred Tax Assets Expected To Be Realized (Excluding The Amount Of Deferred Tax Assets From 2(a) above) After Application of the Threshold Limitation (The Lesser of 2(b)1 and 2(b)2 Below) | 477,768 | - | 477,768 |
| 1. Adjusted Gross Deferred Tax Assets Expected to be Realized Following the Balance Sheet Date. | 477,768 | - | 477,768 |
| 2. Adjusted Gross Deferred Tax Assets Allowed per Limitation Threshold. | - | - | 235,616 |
| (c) Adjusted Gross Deferred Tax Assets (Excluding The Amount of Deferred Tax Assets From 2(a) and 2(b) above) Offset by Gross Deferred Tax Liabilities | 426,000 | 25,487 | 451,487 |
| (d) Deferred Tax Assets Admitted as the result of application of SSAP No. 101. Total (2(a) + 2(b) + 2(c)) | \$ 903,768 | \$ 25,487 | \$ 929,255 |

3.

| | 2014 | 2013 |
|---|------------|------------|
| (a) Ratio Percentage Used To Determine Recovery Period And Threshold Limitation Amount. | 26,370.8% | 22,797.5% |
| (b) Amount of Adjusted Capital And Surplus Used To Determine Recovery Period And Threshold Limitation In 2(b)2 Above. | 63,676,473 | 61,131,966 |

4.

| | 12/31/2014 | | 12/31/2013 | | Change | |
|---|-----------------|----------------|-----------------|----------------|------------------------------|-----------------------------|
| | (1) Ordinary | (2) Capital | (3) Ordinary | (4) Capital | (5) (Col 1-3) Ordinary | (6) (Col 2-4) Capital |
| Impact of Tax-Planning Strategies | | | | | | |
| (a) Determination of adjusted gross deferred tax assets and net admitted deferred tax assets, by tax character as a percentage. | | | | | | |
| 1. Adjusted Gross DTAs amount from Note 9A1 (c) | \$ 3,397,000 | \$ 2,000 | \$ 384,987 | \$ 89,513 | \$ 3,012,013 | \$ (87,513) |
| 2. Percentage of adjusted gross DTAs by tax character to the impact of tax planning strategies. | 0% | 0% | 0% | 0% | 0% | 0% |
| 3. Net Admitted Adjusted Gross DTAs amount from Note 9A1 (e) | \$ 1,401,755 | \$ 2,000 | \$ 384,987 | \$ 89,513 | \$ 1,016,768 | \$ (87,513) |
| 4. Percentage of net admitted adjusted gross DTAs by tax character admitted because of the impact of tax planning strategies. | 0% | 0% | 0% | 0% | 0% | 0% |

(b) Does the Company's tax-planning strategies include the use of reinsurance: Yes No

NOTES TO FINANCIAL STATEMENTS

B. The Company does not have any DTLs described in SSAP No. 101 Income Taxes, a Replacement of SSAP No. 10R and SSAP No. 10, paragraph 23.

C. Current income taxes incurred consist of the following major components:

| | (1) 12/31/2014 | (2) 12/31/2013 | (3) (Col 1-2) Change |
|--|-------------------|-------------------|----------------------------|
| 1. Current Income Tax | | | |
| (a) Federal | \$ (521,150) | \$ (5,186,420) | \$ 4,665,269 |
| (b) Foreign | 0 | - | - |
| (c) Subtotal | (521,150) | (5,186,420) | 4,665,269 |
| (d) Federal income tax on net capital gains | 14,150 | 157,420 | (143,269) |
| (e) Utilization of capital loss carry-forwards | - | - | - |
| (f) Other | - | - | - |
| (g) Federal and foreign income tax incurred | \$ (507,000) | \$ (5,029,000) | \$ 4,522,000 |
| 2. Deferred Tax Assets: | | | |
| (a) Ordinary | | | |
| (1) Discounting of unpaid losses | \$ - | \$ - | \$ - |
| (2) Unearned premium reserve | - | - | - |
| (3) Policyholder reserves | - | - | - |
| (4) Investments | 46,000 | \$ 7,000 | 39,000 |
| (5) Deferred acquisition costs | - | - | - |
| (6) Policyholder dividends accrual | - | - | - |
| (7) Fixed Assets | 274,000 | 264,000 | 10,000 |
| (8) Compensation and benefits accrual | - | 29,000 | (29,000) |
| (9) Pension accrual | - | - | - |
| (10) Receivables – nonadmitted | - | - | - |
| (11) Net operating loss carry-forward | 2,035,000 | 3,369,000 | (1,334,000) |
| (12) Tax credit carry-forward | - | - | - |
| (13) Other (including items <5% of total ordinary tax assets) | 1,042,000 | 12,987 | 1,029,013 |
| (99) Subtotal | 3,397,000 | 3,681,987 | (284,987) |
| (b) Statutory valuation allowance adjustment | - | 3,297,000 | (3,297,000) |
| (c) Nonadmitted | 1,995,245 | - | 1,995,245 |
| (d) Admitted ordinary deferred tax assets (2a99 – 2b – 2c) | 1,401,755 | 384,987 | 1,016,768 |
| (e) Capital | | | |
| (1) Investments | 2,000 | 89,513 | (87,513) |
| (2) Net capital loss carry-forward | - | - | - |
| (3) Real estate | - | - | - |
| (4) Other (including items <5% of total capital tax assets) | - | - | - |
| (99) Subtotal | 2,000 | 89,513 | (87,513) |
| (f) Statutory valuation allowance adjustment | - | - | - |
| (g) Nonadmitted | - | - | - |
| (h) Admitted capital deferred tax assets (2e99 – 2f – 2g) | 2,000 | 89,513 | (87,513) |
| (i) Admitted deferred tax assets (2d + 2h) | 1,403,755 | 474,500 | 929,255 |
| 3. Deferred Tax Liabilities: | | | |
| (a) Ordinary | | | |
| (1) Investments | 32,000 | 26,000 | 6,000 |
| (2) Fixed assets | 54,000 | 20,000 | 34,000 |
| (3) Deferred and uncollected premium | - | - | - |
| (4) Policyholder reserves | - | - | - |
| (5) Other (including items <5% of total capital tax liabilities) | 340,000 | 270,650 | 69,350 |
| (99) Subtotal | 426,000 | 316,650 | 109,350 |
| (b) Capital: | | | |
| (1) Investments | 81,000 | 157,850 | (76,850) |
| (2) Real estate | - | - | - |

NOTES TO FINANCIAL STATEMENTS

| | | | |
|--|------------|---------|------------|
| (3) Other (including items <5% of total capital tax liabilities) | 34,000 | - | 34,000 |
| (99) Subtotal | 115,000 | 157,850 | (42,850) |
| (c) Deferred tax liabilities (3a99 + 3b99) | 541,000 | 474,500 | 66,500 |
| 4. Net deferred tax assets/liabilities (2i – 3c) | \$ 862,755 | \$ - | \$ 862,755 |

- D. Effective tax rates differ from the current statutory rate of 35% principally due to the effects of utilization of net operating loss carry-forwards, tax exempt income, revisions to prior year estimates, accretion of market discount, and limits on charitable contributions.
- E. The Company has net operating loss carry-forwards which expire as follows:

| Year Generated | Amount | Expiration |
|----------------|--------------|------------|
| 2011 | \$ 1,249,000 | 2031 |
| 2012 | \$ 4,563,000 | 2032 |

The Company has no alternative minimum tax credit carry-forwards.

The amount of Federal income taxes incurred and available for recoupment in the event of future losses is none from the current year and none from the preceding year.

The Company does not have deposits admitted under Section 6603 of the Internal Revenue Code.

- F. The Company's Federal income tax return is consolidated with the following entities:

| | |
|---|---|
| AMBCO Capital Corporation | Liberty Mutual Insurance Company |
| America First Insurance Company | Liberty Mutual Personal Insurance Company |
| America First Lloyd's Insurance Company | Liberty Northwest Insurance Corporation |
| American Economy Insurance Company | Liberty Personal Insurance Company |
| American Fire and Casualty Company | Liberty RE (Bermuda) Limited |
| American States Insurance Company | Liberty Sponsored Insurance (Vermont), Inc. |
| American States Insurance Company of Texas | Liberty Surplus Insurance Corporation |
| American States Lloyds Insurance Company | LIH-RE of America Corporation |
| American States Preferred Insurance Company | LIU Specialty Insurance Agency Inc. |
| Berkeley Holding Company Associates, Inc. | LM General Insurance Company |
| Berkeley Management Corporation | LM Insurance Corporation |
| Bridgefield Casualty Insurance Company | LM Property and Casualty Insurance Company |
| Bridgefield Employers Insurance Company | LMHC Massachusetts Holdings Inc. |
| Capitol Court Corporation | Mid-American Fire & Casualty Company |
| Cascade Disability Management, Inc. | North Pacific Insurance Company |
| Colorado Casualty Insurance Company | Ocasco Budget, Inc. |
| Consolidated Insurance Company | OCI Printing, Inc. |
| Copley Venture Capital, Inc. | Ohio Casualty Corporation |
| Diversified Settlements, Inc. | Ohio Security Insurance Company |
| Emerald City Insurance Agency, Inc. | Open Seas Solutions, Inc. |
| Employers Insurance Company of Wausau | Oregon Automobile Insurance Company |
| Excelsior Insurance Company | Peerless Indemnity Insurance Company |
| F.B. Beattie & Co., Inc. | Peerless Insurance Company |
| First National Insurance Company of America | Pilot Insurance Services, Inc. |
| First State Agency Inc. | Rianoc Research Corporation |
| General America Corporation | S.C. Bellevue, Inc. |
| General America Corporation of Texas | SAFECARE Company, Inc. |
| General Insurance Company of America | Safeco Corporation |
| Golden Eagle Insurance Corporation | Safeco General Agency, Inc. |
| Gulf States AIF, Inc. | Safeco Insurance Company of America |
| Hawkeye-Security Insurance Company | Safeco Insurance Company of Illinois |
| Heritage-Summit HealthCare, Inc. | Safeco Insurance Company of Indiana |
| Indiana Insurance Company | Safeco Insurance Company of Oregon |
| Insurance Company of Illinois | Safeco Lloyds Insurance Company |

NOTES TO FINANCIAL STATEMENTS

| | |
|--|---|
| LEXCO Limited | Safeco National Insurance Company |
| Liberty-USA Corporation | Safeco Properties, Inc. |
| Liberty Assignment Corporation | Safeco Surplus Lines Insurance Company |
| Liberty Energy Canada, Inc. | San Diego Insurance Company |
| Liberty Financial Services, Inc. | SCIT, Inc. |
| Liberty Hospitality Group, Inc. | St. James Insurance Company Ltd. |
| Liberty Insurance Corporation | Summit Consulting, Inc. |
| Liberty Insurance Holdings, Inc. | Summit Holding Southeast, Inc. |
| Liberty Insurance Underwriters Inc. | The First Liberty Insurance Corporation |
| Liberty International Europe Inc. | The Midwestern Indemnity Company |
| Liberty International Holdings Inc. | The National Corporation |
| Liberty Life Assurance Company of Boston | The Netherlands Insurance Company |
| Liberty Life Holdings Inc. | The Ohio Casualty Insurance Company |
| Liberty Lloyds of Texas Insurance Company | Wausau Business Insurance Company |
| Liberty Management Services, Inc. | Wausau General Insurance Company |
| Liberty Mexico Holdings Inc. | Wausau Underwriters Insurance Company |
| Liberty Mutual Agency Corporation | West American Insurance Company |
| Liberty Mutual Fire Insurance Company | Winmar Company, Inc. |
| Liberty Mutual Group Asset Management Inc. | Winmar of the Desert, Inc. |
| Liberty Mutual Group Inc. | Winmar Oregon, Inc. |
| Liberty Mutual Holding Company Inc. | Winmar-Metro, Inc. |

The method of federal income tax allocation is subject to a written agreement. Allocation is based upon separate return calculations with credit applied for losses as appropriate. The Company has the enforceable right to recoup prior year payments in the event of future losses.

- G. The Company does not expect the Federal and Foreign income tax loss contingencies, as determined in accordance with SSAP No. 5R, Liabilities, Contingencies and Impairments of Assets, with the modifications provided in SSAP No. 101, Income Taxes – A Replacement of SSAP No. 10R and SSAP No. 10, to significantly increase within twelve months of the reporting date.

Note 10 - Information Concerning Parent, Subsidiaries and Affiliates

- A. All of the outstanding shares of capital stock of the Company are held by Liberty Mutual Insurance Company ("LMIC"), a Massachusetts insurance company. The ultimate parent of LMIC is Liberty Mutual Holding Company Inc. ("LMHC"), a Massachusetts company.
- B. Transactions between the Company and its affiliates are listed on Schedule Y Part 2.
- C. There have been no material transactions with the Company's affiliates during 2014.
- D. At December 31, 2014, the Company reported a net \$27,726,900 due to affiliates. In general, the terms of the intercompany arrangements require settlement at least quarterly.
- E. The Company has not made any guarantees or initiated any undertakings, written or otherwise, for the benefit of affiliates or other related parties.
- F. Refer to Note 26 for information regarding the Inter-Company Reinsurance Agreement.

The Company is a party to a management services agreement (the "Agreement") with Liberty Mutual Insurance Company ("LMIC"). Under the Agreement, LMIC may provide the Company with office space, supplies, equipment, telephone and wire services, the use of computers and similar machines and services of personnel employed by LMIC and LMGI. Services provided include, but are not limited to, risk underwriting, claims processing, claims adjustments, policyholder services, contract management and administration. LMIC is reimbursed for the cost of all services which it provides under the Agreement.

The Company is a party to an investment management agreement and a cash management agreement with Liberty Mutual Group Asset Management Inc. ("LMGAM"). Under these agreements, LMGAM provides services to the Company.

The Company is a party to a Federal Tax Sharing Agreement between LMHC and affiliates (Refer to Note 9F).

The Company paid \$3,961,926 under the LMHC Tax Sharing Agreement and paid \$123,188 under the LMGAM investment management agreement. Pursuant to the Inter-Company Reinsurance Agreement with LMIC (Refer to Note 26), the expenses incurred under the Liberty Mutual service agreement are allocated to the Company in accordance with the Company's "Pool" participation percentage.

- G. The Company is a member of a holding company structure as illustrated in Schedule Y Part 1.

NOTES TO FINANCIAL STATEMENTS

- H. The Company does not own shares of any upstream intermediate or ultimate parent, either directly or indirectly via a downstream subsidiary, controlled or affiliated company.
- I. The Company does not own investments in subsidiary, controlled or affiliated companies.
- J. The Company does not own any investments in subsidiary, controlled or affiliated entities; as such, no impairments were recognized.
- K. The Company does not hold any investments in foreign insurance subsidiaries.
- L. The Company does not hold any investments in downstream non-insurance holding companies.

Note 11 - Debt

- A. Debt (Including Capital Notes)

The Company has no debt, including capital notes.

- B. Federal Home Loan Bank Agreements

The Company has not entered into any agreements with the Federal Home Loan Bank.

Note 12 - Retirement Plans, Deferred Compensation, Postemployment Benefits and Compensated Absences and Other Postretirement Benefit Plans

The Company does not have any direct employees and therefore, does not have any direct obligations for a defined benefit plan, deferred compensation arrangements, compensated absences or other post retirement benefit plans. Services for the operation of the Company are provided under provisions of the management services agreements, as described in Note 10F.

Note 13 - Capital and Surplus, Shareholders' Dividend Restrictions and Quasi-Reorganizations

1. The Company has 20,000 shares authorized and 11,250 shares issued and outstanding as of December 31, 2014. All shares have a stated par value of \$400.
2. Preferred Stock
Not applicable
3. There are no dividend restrictions.
4. The Company did not pay any dividends to its parent during 2014.
5. The maximum amount of dividends that can be paid by Wisconsin-domiciled insurance companies to shareholders without prior approval of the Insurance Commissioner is the lesser of (a) 10% of surplus, or the greater of (b) or (c); (b) net income for calendar year preceding date of dividend less realized gains for that calendar year, or (c) the aggregate of net income for three calendar years preceding the date of dividend less realized gains for those calendar years less dividends paid/credited within the first two of the preceding three calendar years. The maximum dividend payout that may be made without prior approval in 2015 is \$2,575,757.
6. The Company does not have restricted unassigned surplus.
7. The Company had no advances to surplus.
8. The Company does not hold stock for special purposes.
9. The Company does not hold special surplus funds.
10. The portion of unassigned funds (surplus) represented by cumulative net unrealized gains and (losses) is \$0.
11. Surplus Notes
Not applicable
12. Quasi-reorganization (dollar impact)
Not applicable
13. Quasi-reorganization (effective date)
Not applicable

NOTES TO FINANCIAL STATEMENTS

Note 14 - Contingencies

A. Contingent Commitments

Refer to Note 10E.

B. Assessments

The Company is subject to guaranty fund and other assessments by the states in which it writes business. Guaranty fund assessments and premium-based assessments are presumed probable when the premium on which the assessments are expected to be based are written. In the case of loss-based assessments, the event that obligates the entity is an entity incurring the losses on which the assessments are expected to be based.

The Company has no net guaranty fund or other assessment liabilities to report. Refer to Note 26.

C. Gain Contingencies

Not applicable

D. Claims related extra contractual obligations and bad faith losses stemming from lawsuits

The Company paid the following amounts in the reporting period to settle claims related extra contractual obligations or bad faith claims stemming from lawsuits.

| | |
|--|-----------|
| | Direct |
| Claims related ECO and bad faith losses paid during the reporting period | \$717,937 |

Number of claims where amounts were paid to settle claims related extra contractual obligations or bad faith claims resulting from lawsuits during the reporting period.

| (a) 0-25 Claims | (b) 26-50 Claims | (c) 51-100 Claims | (d) 101-500 Claims | (e) More than 500 Claims |
|----------------------|-----------------------|------------------------|-------------------------|-------------------------------|
| X | | | | |

Indicate whether claim count information is disclosed per claim or per claimant.

(f) Per Claim [X]

(g) Per Claimant []

E. Product Warranties

The Company does not write product warranty business.

F. Joint and Several Liabilities

The Company is not a participant in any joint and several liabilities.

G. All Other Contingencies

Lawsuits arise against the Company in the normal course of business. Contingent liabilities arising from litigation, income taxes, and other matters are not considered material in relation to the financial position of the Company.

As disclosed in Note 9F, the Company is a member of a controlled group for federal income tax purposes, and that group includes LMGI. LMGI is the plan sponsor of the Liberty Mutual Retirement Benefit Plan, a qualified plan under federal law. Pursuant to federal law, if LMGI has not made the minimum required contributions with respect to the Liberty Mutual Retirement Benefit Plan, the Company, jointly and severally with all other members of the controlled group, would be contingently liable to make such contributions.

Note 15 - Leases

A. Lessee Leasing Arrangements

The Company has no net lease obligations. Refer to Note 26.

B. Leasing as a Significant Part of Lessor's Business Activities

Leasing is not a significant part of the Company's business activities.

Note 16 - Information About Financial Instruments with Off-Balance Sheet Risk and Financial Instruments with Concentrations of Credit Risk

The Company is not exposed to financial instruments with off-balance sheet risk or concentration of credit risk.

Note 17 - Sale, Transfer and Servicing of Financial Assets and Extinguishments of Liabilities

A. Transfers of Receivables Reported as Sales

The Company did not have any transfers of receivables reported as sales.

NOTES TO FINANCIAL STATEMENTS

B. Transfers and Servicing of Financial Assets

The Company participates in a Securities Lending Program to generate additional income, whereby certain fixed income and mortgage backed securities are loaned for a period of time from the Company's portfolio to qualifying third parties, via a lending agent. The Company does not participate in term loans; therefore, the Company does not have contractual collateral transactions that extend beyond one year from the reporting date. Borrowers of these securities provide collateral equal to or in excess of 102% of the market value of the loaned securities. Acceptable collateral may be in the form of cash or U.S. Government securities, such as Treasuries and Agency Bonds. The market value of the loaned securities is monitored and additional collateral is obtained if the market value of the collateral falls below 102% of the market value of the loaned securities. Additionally, the lending agent indemnifies the Company against borrower defaults. Cash collateral is carried as an asset with an offsetting liability on the balance sheet, as the collateral is unrestricted and the Company can exercise discretion as to how the collateral is invested. The loaned securities remain a recorded asset of the Company.

At December 31, 2014 the total fair value of securities on loan was \$3,350,777, with corresponding collateral value of \$3,427,672 of which \$1,968,017 represents cash collateral that was reinvested.

C. Wash Sales

- 1) The Company did not have any wash sale transactions during the year.
- 2) Not applicable

Note 18 - Gain or Loss from Uninsured Plans and the Uninsured Portion of Partially Insured Plans

A. Administrative Services Only (ASO) Plans

Not applicable

B. Administrative Services Contract (ASC) Plans

Not applicable

C. Medicare or Other Similarly Structured Cost Based Reimbursement Contracts

Not applicable

Note 19 - Direct Premium Written/Produced by Managing General Agents/Third Party Administrators

The Company has no direct premiums written or produced through managing general agents or third party administrators.

Note 20 - Fair Value Measurements

A. Inputs Used for Assets and Liabilities Measured at Fair Value

Pursuant to the guidance in SSAP No. 100, *Fair Value Measurements*, the Company carries no assets or liabilities on its balance sheet measured at fair value.

B. Other Fair Value Disclosures

Not applicable

C. Aggregate Fair Value of All Financial Instruments

| Type of Financial Instrument | Aggregate Fair Value | Admitted Assets | (Level 1) | (Level 2) | (Level 3) | Not Practicable (Carrying Value) |
|--|----------------------|-----------------|--------------|--------------|-----------|----------------------------------|
| Cash, Cash Equivalents, and Short Term | \$1,443,759 | \$1,443,759 | \$1,443,759 | \$- | \$- | \$- |
| Bonds | 63,470,202 | 60,585,713 | 16,528,210 | 46,941,992 | - | - |
| Preferred Stock | - | - | - | - | - | - |
| Common Stock | - | - | - | - | - | - |
| Securities Lending | 1,968,017 | 1,968,017 | - | 1,968,017 | - | - |
| Mortgage Loans | - | - | - | - | - | - |
| Surplus Notes | - | - | - | - | - | - |
| Total | \$66,881,978 | \$63,997,489 | \$17,971,969 | \$48,910,009 | \$- | \$- |

D. Not Practicable to Estimate Fair Value

Not applicable

NOTES TO FINANCIAL STATEMENTS

Note 21 - Other Items

A. Extraordinary Items

The Company has no extraordinary items to report.

B. Troubled Debt Restructuring: Debtors

Not applicable

C. Other Disclosures

1) Interrogatory 6.1

The Company cedes 100% of its business to Liberty Mutual Insurance Company, the lead company in the Liberty Mutual Pool. Liberty Mutual Insurance Company purchases external catastrophe reinsurance coverage.

Interrogatory 6.2

The Company cedes 100% of its business to Liberty Mutual Insurance Company, the lead company in the Liberty Mutual Pool. Liberty Mutual Insurance Company purchases external catastrophe reinsurance coverage.

Interrogatory 6.3

The Company cedes 100% of its business to Liberty Mutual Insurance Company, the lead company in the Liberty Mutual Pool. Liberty Mutual Insurance Company purchases external catastrophe reinsurance coverage.

2) Florida Special Disability Trust Fund

a) The amount of credit taken by the Company in determination of its loss reserves was \$0 in 2014 and 2013.

b) The Company's reported loss recoveries from the Special Disability Trust Fund were \$0 in 2014 and 2013.

c) The amount the Company was assessed by the Special Disability Trust Fund was \$17,166 in 2014 and \$67,306 in 2013.

D. Business Interruption Insurance Recoveries

The Company does not purchase business interruption coverage.

E. State Transferable and Non-transferable Tax Credit

The Company does not hold state transferable and/or non-transferable tax credits.

F. Subprime-Mortgage-Related Risk Exposure

1. The Company has not purchased securities characterized by the market as subprime. The Company reviews such factors as average FICO scores, loan to value ratios, and levels of documentation when evaluating securities.

2. The Company does not have any direct exposure through investments in sub-prime mortgage loans.

3. The Company does not have any direct exposure through other investments.

4. The Company does not have any underwriting exposure to sub-prime mortgage risk.

G. On April 1, 2014 Liberty Mutual Insurance Company, with regulatory approval, sold its wholly owned non-insurance subsidiary, Summit Holdings Southeast Inc., and Summit Holdings Southeast Inc.'s two wholly owned insurance subsidiaries: Bridgefield Employers Insurance Company and Bridgefield Casualty Insurance Company, to American Financial Group. Also effective on April 1, 2014, Liberty Mutual Insurance Company commuted its intercompany 100% quota share reinsurance agreements with Bridgefield Employers Insurance Company and Bridgefield Casualty Insurance Company.

Note 22 - Events Subsequent

The Company evaluated subsequent events through February 13, 2015, the date the financial statements were available to be issued.

There were no events subsequent to December 31, 2014 that would require disclosure.

The Company did not receive any assessments under the Affordable Care Act.

Note 23 - Reinsurance

A. Unsecured Reinsurance Recoverable

Excluding amounts arising pursuant to the Intercompany Reinsurance Agreements, there are no unsecured reinsurance recoverables with an individual reinsurer which exceed 3% of policyholder's surplus.

NOTES TO FINANCIAL STATEMENTS

B. Reinsurance Recoverable in Dispute

There are no reinsurance recoverables in dispute from an individual reinsurer which exceeds 5% of the Company's surplus. In addition, the aggregate reinsurance recoverables in dispute do not exceed 10% of the Company's surplus.

C. Reinsurance Assumed & Ceded

- The following table sets forth the maximum return premium and commission equity due the reinsurers or the Company if all of the Company's assumed and ceded reinsurance were canceled as of December 31, 2014.

| | Assumed Reinsurance | | Ceded Reinsurance | | Net | |
|------------------------------------|---------------------|-------------------|-------------------|-------------------|-----------------|-------------------|
| | Premium Reserve | Commission Equity | Premium Reserve | Commission Equity | Premium Reserve | Commission Equity |
| a. Affiliates | \$ - | \$ - | \$1,500,767 | \$225,115 | \$(1,500,767) | \$(225,115) |
| b. All Other | - | - | - | - | - | - |
| c. TOTAL | \$ - | \$ - | \$1,500,767 | \$225,115 | \$(1,500,767) | \$(225,115) |
| d. Direct Unearned Premium Reserve | \$1,500,767 | | | | | |

- The Company has no contingent commissions, sliding scale, or other profit sharing commissions for direct, assumed or ceded business.
- The Company does not use protected cells as an alternative to traditional reinsurance.

D. Uncollectible Reinsurance

The Company did not write off any uncollectible balances in the current year.

E. Commutation of Ceded Reinsurance

The Company did not commute any reinsurance treaties in the current year.

F. Retroactive Reinsurance

The Company does not have any retroactive reinsurance agreements.

G. Reinsurance Accounted for as a Deposit

The Company has not entered into any reinsurance agreements that have been accounted for as deposits as of December 31, 2014.

H. Disclosures for the Transfer of Property and Casualty Run-off Agreements

The Company has not entered into any agreements which have been approved by their domiciliary regulator and have qualified pursuant to SSAP No. 62R, *Property and Casualty Reinsurance* to receive P&C Run-off Accounting Treatment.

I. Certified Reinsurers Downgraded or Status Subject to Revocation.

- Reporting Entity Ceding to Certified Reinsurer Downgraded or Status Subject to Revocation

The Company has not entered into any reinsurance contracts with Certified Reinsurers.

- Reporting Entity's Certified Reinsurer Rating Downgraded or Status Subject to Revocation

The Company is not a Certified Reinsurer.

Note 24 - Retrospectively Rated Contracts and Contracts Subject to Redetermination

The Company does not have net accrued retrospective premiums. Refer to Note 26.

The Company did not receive any assessments under the Affordable Care Act.

Note 25 - Changes in Incurred Losses and Loss Adjustment Expenses

The Company has no net exposure to changes in incurred losses and loss adjustment expenses. Refer to Note 26.

Note 26 - Intercompany Pooling Arrangements

The Company is a member of the Liberty Mutual Second Amended and Restated Intercompany Reinsurance Agreement consisting of the following affiliated companies:

| | | NAIC Company Number | Pooling Percentage | Line of Business |
|------------------|---|---------------------------|-----------------------|---------------------|
| Lead Company: | Liberty Mutual Insurance Company ("LMIC") | 23043 | 50.00% | All Lines |

NOTES TO FINANCIAL STATEMENTS

| | | | | |
|------------|--|-------|--------|-----------|
| Affiliated | Peerless Insurance Company (“PIC”) | 24198 | 20.00% | All Lines |
| Pool | Employers Insurance Company of Wausau (“EICOW”) | 21458 | 8.00% | All Lines |
| Companies: | Liberty Mutual Fire Insurance Company (“LMFIC”) | 23035 | 8.00% | All Lines |
| | The Ohio Casualty Insurance Company (“OCIC”) | 24074 | 8.00% | All Lines |
| | Safeco Insurance Company of America (“SICOA”) | 24740 | 6.00% | All Lines |
| | American Economy Insurance Company (“AEIC”) | 19690 | 0.00% | All Lines |
| | America First Insurance Company (“AFIC”) | 12696 | 0.00% | All Lines |
| | America Fire and Casualty Company (“AFCIC”) | 24066 | 0.00% | All Lines |
| | America First Lloyd’s Insurance Company (“AFLIC”) | 11526 | 0.00% | All Lines |
| | American States Insurance Company (“ASIC”) | 19704 | 0.00% | All Lines |
| | American States Insurance Company of Texas (“ASICT”) | 19712 | 0.00% | All Lines |
| | American States Lloyd’s Insurance Company (“ASLCO”) | 31933 | 0.00% | All Lines |
| | American States Preferred Insurance Company (“ASPCO”) | 37214 | 0.00% | All Lines |
| | Colorado Casualty Insurance Company (“CCIC”) | 41785 | 0.00% | All Lines |
| | Consolidated Insurance Company (“CIC”) | 22640 | 0.00% | All Lines |
| | Excelsior Insurance Company (“EIC”) | 11045 | 0.00% | All Lines |
| | First National Insurance Company of America (“FNICA”) | 24724 | 0.00% | All Lines |
| | The First Liberty Insurance Corporation (“FST”) | 33588 | 0.00% | All Lines |
| | General Insurance Company of America (“GICA”) | 24732 | 0.00% | All Lines |
| | Golden Eagle Insurance Corporation (“GEIC”) | 10836 | 0.00% | All Lines |
| | Hawkeye-Security Insurance Company (“HSIC”) | 36919 | 0.00% | All Lines |
| | Insurance Company of Illinois (“ICIL”) | 26700 | 0.00% | All Lines |
| | Indiana Insurance Company (“IIC”) | 22659 | 0.00% | All Lines |
| | Liberty Insurance Corporation (“LIC”) | 42404 | 0.00% | All Lines |
| | Liberty Insurance Underwriters, Inc. (“LIU”) | 19917 | 0.00% | All Lines |
| | Liberty County Mutual Insurance Company (“LCMIC”) | 19544 | 0.00% | All Lines |
| | LM General Insurance Company (“LMGIC”) | 36447 | 0.00% | All Lines |
| | Liberty Lloyd’s of Texas Insurance Company (“LLOT”) | 11041 | 0.00% | All Lines |
| | LM Insurance Corporation (“LMC”) | 33600 | 0.00% | All Lines |
| | Liberty Mutual Mid-Atlantic Insurance Company (“LMMAIC”) | 14486 | 0.00% | All Lines |
| | Liberty Mutual Personal Insurance Company (“LMPICO”) | 12484 | 0.00% | All Lines |
| | Liberty Northwest Insurance Corporation (“LNW”) | 41939 | 0.00% | All Lines |
| | Liberty Personal Insurance Company (“LPIC”) | 11746 | 0.00% | All Lines |
| | Liberty Surplus Insurance Corporation (“LSI”) | 10725 | 0.00% | All Lines |
| | Mid-American Fire & Casualty Company (“MAFCC”) | 23507 | 0.00% | All Lines |
| | Montgomery Mutual Insurance Company (“MMIC”) | 14613 | 0.00% | All Lines |
| | The Midwestern Indemnity Company (“MWIC”) | 23515 | 0.00% | All Lines |
| | National Insurance Association (“NIA”) | 27944 | 0.00% | All Lines |
| | The Netherlands Insurance Company (“NIC”) | 24171 | 0.00% | All Lines |
| | North Pacific Insurance Company (“NPIC”) | 23892 | 0.00% | All Lines |
| | Ohio Security Insurance Company (“OSIC”) | 24082 | 0.00% | All Lines |
| | Oregon Automobile Insurance Company (“OAIC”) | 23922 | 0.00% | All Lines |
| | Peerless Indemnity Insurance Company (“PIIC”) | 18333 | 0.00% | All Lines |
| | Safeco Insurance Company of Illinois (“SICIL”) | 39012 | 0.00% | All Lines |
| | Safeco Insurance Company of Indiana (“SICIN”) | 11215 | 0.00% | All Lines |
| | Safeco Insurance Company of Oregon (“SICOR”) | 11071 | 0.00% | All Lines |
| | Safeco Lloyds Insurance Company (“SLICO”) | 11070 | 0.00% | All Lines |
| | Safeco National Insurance Company (“SNIC”) | 24759 | 0.00% | All Lines |
| | Safeco Surplus Lines Insurance Company (“SSLIC”) | 11100 | 0.00% | All Lines |
| | Wausau Business Insurance Company (“WBIC”) | 26069 | 0.00% | All Lines |
| | Wausau General Insurance Company (“WGIC”) | 26425 | 0.00% | All Lines |
| | Wausau Underwriters Insurance Company (“WUIC”) | 26042 | 0.00% | All Lines |
| | West American Insurance Company (“WAIC”) | 44393 | 0.00% | All Lines |
| 100% Quota | | | | |
| Share | LM Property and Casualty Insurance Company (“LMPAC”) | 32352 | 0.00% | All Lines |
| Affiliated | | | | |
| Companies: | | | | |

Under the terms of the Reinsurance Agreements, the sequence of transactions is as follows:

- (a) Except for WBIC, WGIC and WUIC, each Affiliated Pool Company cedes its underwriting activity to the Lead Company. WBIC, WGIC and WUIC cede 100% of its direct underwriting activity to EICOW.

NOTES TO FINANCIAL STATEMENTS

- (b) After recording the assumed affiliate transactions noted above, the Lead Company records 100% of its external assumed and ceded reinsurance activity.
- (c) The Lead Company's remaining underwriting activity, after processing all internal and external reinsurance, is retroceded to the pool members in accordance with each company's pool participation percentage, as noted above.
- (d) There were no members that are parties to reinsurance agreements with non-affiliated reinsurers covering business subject to the pooling agreement and have a contractual right of direct recovery from the non-affiliated reinsurer per the terms of such reinsurance agreements.
- (e) There were no discrepancies between entries regarding pooled business on the assumed and ceded reinsurance schedules of the Lead Company and corresponding entries on the assumed and ceded reinsurance schedules of other pooled participants.
- (f) The write-off of uncollectible reinsurance is pooled and the provision for reinsurance is recognized by the entity placing the outbound external reinsurance.
- (g) Amounts due (to)/from affiliated entities participating in the Liberty Mutual Second Amended and Restated Intercompany Reinsurance Agreement as of December 31, 2014:

| | |
|----------------------------------|--------------|
| Affiliate: | Amount: |
| Liberty Mutual Insurance Company | \$28,642,483 |

On April 1, 2014 Bridgefield Employers Insurance Company and Bridgefield Casualty Insurance Company were sold and each company's 100% quota share affiliated companies reinsurance agreement was terminated. (Please refer to Note 21G.)

Note 27 - Structured Settlements

- A. The Company has no net exposure to contingent liabilities from the purchase of annuities. Refer to Note 26.
- B. Not applicable

Note 28 - Health Care Receivables

Not applicable

Note 29 - Participating Policies

Not applicable

Note 30 - Premium Deficiency Reserves

| | |
|---|------------|
| 1. Liability carried for premium deficiency reserves | \$- |
| 2. Date of the most recent evaluation of this liability | 12/31/2014 |
| 3. Was anticipated investment income utilized in the calculation? | Yes |

Note 31 - High Dollar Deductible Policies

Not applicable.

Note 32 - Discounting of Liabilities for Unpaid Losses and Unpaid Loss Adjustment Expenses

The Company has no net loss and loss adjustment expense reserves. Refer to Note 26.

Note 33 - Asbestos/Environmental Reserves

The Company has no net exposure to asbestos and environmental claims. Refer to Note 26.

Note 34 - Subscriber Savings Accounts

The Company is not a reciprocal insurance company.

Note 35 - Multiple Peril Crop Insurance

Not applicable

Note 36 - Financial Guaranty Insurance

Not applicable

GENERAL INTERROGATORIES

6.1 Has the reporting entity had any Certificates of Authority, licenses or registrations (including corporate registration, if applicable) suspended or revoked by any governmental entity during the reporting period? Yes [] No [X]

6.2 If yes, give full information:

.....

7.1 Does any foreign (non-United States) person or entity directly or indirectly control 10% or more of the reporting entity? Yes [] No [X]

7.2 If yes,

7.21 State the percentage of foreign control. _____ 0.00 %
 7.22 State the nationality(s) of the foreign person(s) or entity(s); or if the entity is a mutual or reciprocal, the nationality of its manager or attorney-in-fact and identify the type of entity(s) (e.g., individual, corporation, government, manager or attorney-in-fact).

| 1 Nationality | 2 Type of Entity |
|------------------|---------------------|
| | |
| | |

8.1 Is the company a subsidiary of a bank holding company regulated by the Federal Reserve Board? Yes [] No [X]

8.2 If response to 8.1 is yes, please identify the name of the bank holding company.

.....

8.3 Is the company affiliated with one or more banks, thrifts or securities firms? Yes [] No [X]

8.4 If response to 8.3 is yes, please provide the names and locations (city and state of the main office) of any affiliates regulated by a federal financial regulatory services agency [i.e. the Federal Reserve Board (FRB), the Office of the Comptroller of the Currency (OCC), the Federal Deposit Insurance Corporation (FDIC) and the Securities Exchange Commission (SEC)] and identify the affiliate's primary federal regulator.

| 1 Affiliate Name | 2 Location (City, State) | 3 FRB | 4 OCC | 5 FDIC | 6 SEC |
|------------------------|--------------------------------|----------|----------|-----------|----------|
| | | | | | |
| | | | | | |

9. What is the name and address of the independent certified public accountant or accounting firm retained to conduct the annual audit?
 Ernst & Young, LLP
 200 Clarendon Street
 Boston, MA 02116

10.1 Has the insurer been granted any exemptions to the prohibited non-audit services provided by the certified independent public accountant requirements as allowed in Section 7H of the Annual Financial Reporting Model Regulation (Model Audit Rule), or substantially similar state law or regulation? Yes [] No [X]

10.2 If response to 10.1 is yes, provide information related to this exemption:

.....

10.3 Has the insurer been granted any exemptions related to the other requirements of the Annual Financial Reporting Model Regulation as allowed for in Section 17A of the Model Regulation, or substantially similar state law or regulation? Yes [] No [X]

10.4 If response to 10.3 is yes, provide information related to this exemption:

.....

GENERAL INTERROGATORIES

10.5 Has the reporting entity established an Audit Committee in compliance with the domiciliary state insurance laws? Yes No N/A

10.6 If the response to 10.5 is no or n/a, please explain.

.....

11. What is the name, address and affiliation (officer/employee of the reporting entity or actuary/consultant associated with an actuarial consulting firm) of the individual providing the statement of actuarial opinion/certification?

Stephanie Neyenhouse FCAS, MAAA
 175 Berkeley Street, Boston, MA 02116
 Vice President and Chief Actuary, Liberty Mutual Group Inc.

12.1 Does the reporting entity own any securities of a real estate holding company or otherwise hold real estate indirectly? Yes No

| | | |
|---|----|---|
| 12.11 Name of real estate holding company | | |
| 12.12 Number of parcels involved | | 0 |
| 12.13 Total book/adjusted carrying value | \$ | 0 |

12.2 If yes, provide explanation:

.....

13. FOR UNITED STATES BRANCHES OF ALIEN REPORTING ENTITIES ONLY:

13.1 What changes have been made during the year in the United States manager or the United States trustees of the reporting entity?

.....

13.2 Does this statement contain all business transacted for the reporting entity through its United States Branch on risks wherever located? Yes No

13.3 Have there been any changes made to any of the trust indentures during the year? Yes No

13.4 If answer to (13.3) is yes, has the domiciliary or entry state approved the changes? Yes No N/A

14.1 Are the senior officers (principal executive officer, principal financial officer, principal accounting officer or controller, or persons performing similar functions) of the reporting entity subject to a code of ethics, which includes the following standards?

- a. Honest and ethical conduct, including the ethical handling of actual or apparent conflicts of interest between personal and professional relationships;
- b. Full, fair, accurate, timely and understandable disclosure in the periodic reports required to be filed by the reporting entity;
- c. Compliance with applicable governmental laws, rules, and regulations;
- d. The prompt internal reporting of violations to an appropriate person or persons identified in the code; and
- e. Accountability for adherence to the code.

Yes No

14.11 If the response to 14.1 is no, please explain:

.....

14.2 Has the code of ethics for senior managers been amended? Yes No

14.21 If the response to 14.2 is yes, provide information related to amendment(s).

In Q2 and Q4, Liberty made technical changes to its Code related to its Registered Investment Advisor (RIA). In Q4, Liberty deregistered its investments operation as an RIA with the SEC, and removed related sections of the Code.

.....

GENERAL INTERROGATORIES

14.3 Have any provisions of the code of ethics been waived for any of the specified officers? Yes [] No [X]

14.31 If the response to 14.3 is yes, provide the nature of any waiver(s).

.....

15.1 Is the reporting entity the beneficiary of a Letter of Credit that is unrelated to reinsurance where the issuing or confirming bank is not on the SVO Bank List? Yes [] No [X]

15.2 If the response to 15.1 is yes, indicate the American Bankers Association (ABA) Routing Number and the name of the issuing or confirming bank of the Letter of Credit and describe the circumstances in which the Letter of Credit is triggered.

| 1 American Bankers Association (ABA) Routing Number | 2 Issuing or Confirming Bank Name | 3 Circumstances That Can Trigger the Letter of Credit | 4 Amount |
|---|---|--|-------------|
| 0 | | | 0 |
| 0 | | | 0 |
| 0 | | | 0 |

BOARD OF DIRECTORS

16. Is the purchase or sale of all investments of the reporting entity passed upon either by the board of directors or a subordinate committee thereof? Yes [X] No []

17. Does the reporting entity keep a complete permanent record of the proceedings of its board of directors and all subordinate committees thereof? Yes [X] No []

18. Has the reporting entity an established procedure for disclosure to its board of directors or trustees of any material interest or affiliation on the part of any of its officers, directors, trustees or responsible employees that is in conflict or is likely to conflict with the official duties of such person? Yes [X] No []

FINANCIAL

19. Has this statement been prepared using a basis of accounting other than Statutory Accounting Principles (e.g., Generally Accepted Accounting Principles)? Yes [] No [X]

20.1 Total amount loaned during the year (inclusive of Separate Accounts, exclusive of policy loans):

| | | | |
|---|--|----|---|
| 20.11 To directors or other officers | | \$ | 0 |
| 20.12 To stockholders not officers | | \$ | 0 |
| 20.13 Trustees, supreme or grand (Fraternal only) | | \$ | 0 |

20.2 Total amount of loans outstanding at the end of year (inclusive of Separate Accounts, exclusive of policy loans):

| | | | |
|---|--|----|---|
| 20.21 To directors or other officers | | \$ | 0 |
| 20.22 To stockholders not officers | | \$ | 0 |
| 20.23 Trustees, supreme or grand (Fraternal only) | | \$ | 0 |

21.1 Were any assets reported in this statement subject to a contractual obligation to transfer to another party without the liability for such obligation being reported in the statement? Yes [] No [X]

21.2 If yes, state the amount thereof at December 31 of the current year:

| | | | |
|----------------------------|--|----|---|
| 21.21 Rented from others | | \$ | 0 |
| 21.22 Borrowed from others | | \$ | 0 |
| 21.23 Leased from others | | \$ | 0 |
| 21.24 Other | | \$ | 0 |

22.1 Does this statement include payments for assessments as described in the Annual Statement Instructions other than guaranty fund or guaranty association assessments? Yes [] No [X]

GENERAL INTERROGATORIES

22.2 If answer is yes:

| | | |
|--|----|---|
| 22.21 Amount paid as losses or risk adjustment | \$ | 0 |
| 22.22 Amount paid as expenses | \$ | 0 |
| 22.23 Other amounts paid | \$ | 0 |

23.1 Does the reporting entity report any amounts due from parent, subsidiaries or affiliates on Page 2 of this statement? Yes No

23.2 If yes, indicate any amounts receivable from parent included in the Page 2 amount: \$ 0

INVESTMENT

24.01 Were all the stocks, bonds and other securities owned December 31 of current year, over which the reporting entity has exclusive control, in the actual possession of the reporting entity on said date? (other than securities lending programs addressed in 24.03) Yes No

24.02 If no, give full and complete information, relating thereto:

.....

24.03 For security lending programs, provide a description of the program including value for collateral and amount of loaned securities, and whether collateral is carried on or off-balance sheet. (an alternative is to reference Note 17 where this information is also provided)
 Please reference Note 17B

24.04 Does the company's security lending program meet the requirements for a conforming program as outlined in the Risk-Based Capital Instructions? Yes No N/A

24.05 If answer to 24.04 is yes, report amount of collateral for conforming programs. \$ 3,427,672

24.06 If answer to 24.04 is no, report amount of collateral for other programs. \$ 0

24.07 Does your securities lending program require 102% (domestic securities) and 105% (foreign securities) from the counterparty at the outset of the contract? Yes No N/A

24.08 Does the reporting entity non-admit when the collateral received from the counterparty falls below 100%? Yes No N/A

24.09 Does the reporting entity or the reporting entity's securities lending agent utilize the Master Securities Lending Agreement (MSLA) to conduct securities lending? Yes No N/A

24.10 For the reporting entity's security lending program, state the amount of the following as of December 31 of the current year:

| | | |
|--|----|-----------|
| 24.101 Total fair value of reinvested collateral assets reported on Schedule DL, Parts 1 and 2 | \$ | 1,968,017 |
| 24.102 Total book adjusted/carrying value of reinvested collateral assets reported on Schedule DL, Parts 1 and 2 | \$ | 1,968,017 |
| 24.103 Total payable for securities lending reported on the liability page | \$ | 1,968,017 |

25.1 Were any of the stocks, bonds or other assets of the reporting entity owned at December 31 of the current year not exclusively under the control of the reporting entity or has the reporting entity sold or transferred any assets subject to a put option contract that is currently in force? (Exclude securities subject to Interrogatory 21.1 and 24.03). Yes No

GENERAL INTERROGATORIES

25.2 If yes, state the amount thereof at December 31 of the current year:

| | | |
|--|--|---------------------|
| | 25.21 Subject to repurchase agreements | \$ <u>0</u> |
| | 25.22 Subject to reverse repurchase agreements | \$ <u>0</u> |
| | 25.23 Subject to dollar repurchase agreements | \$ <u>0</u> |
| | 25.24 Subject to reverse dollar repurchase agreements | \$ <u>0</u> |
| | 25.25 Placed under option agreements | \$ <u>0</u> |
| | 25.26 Letter stock or securities restricted as to sale - excluding FHLB Capital Stock | \$ <u>0</u> |
| | 25.27 FHLB Capital Stock | \$ <u>0</u> |
| | 25.28 On deposit with states | \$ <u>8,457,280</u> |
| | 25.29 On deposit with other regulatory bodies | \$ <u>169,326</u> |
| | 25.30 Pledged as collateral - excluding collateral pledged to an FHLB | \$ <u>0</u> |
| | 25.31 Pledged as collateral to FHLB - including assets backing funding agreements | \$ <u>0</u> |
| | 25.32 Other | \$ <u>0</u> |

25.3 For category (25.26) provide the following:

| 1 Nature of Restriction | 2 Description | 3 Amount |
|----------------------------|------------------|-------------|
| | | 0 |
| | | 0 |
| | | 0 |

26.1 Does the reporting entity have any hedging transactions reported on Schedule DB? Yes [] No [X]

26.2 If yes, has a comprehensive description of the hedging program been made available to the domiciliary state?
If no, attach a description with this statement. Yes [] No [] N/A [X]

27.1 Were any preferred stocks or bonds owned as of December 31 of the current year mandatorily convertible into equity, or, at the option of the issuer, convertible into equity? Yes [] No [X]

27.2 If yes, state the amount thereof at December 31 of the current year. \$ 0

28. Excluding items in Schedule E - Part 3 - Special Deposits, real estate, mortgage loans and investments held physically in the reporting entity's offices, vaults or safety deposit boxes, were all stocks, bonds and other securities, owned throughout the current year held pursuant to a custodial agreement with a qualified bank or trust company in accordance with Section 1, III - General Examination Considerations, F. Outsourcing of Critical Functions, Custodial or Safekeeping Agreements of the NAIC Financial Condition Examiners Handbook? Yes [X] No []

28.01 For agreements that comply with the requirements of the NAIC Financial Condition Examiners Handbook, complete the following:

| 1 Name of Custodian(s) | 2 Custodian's Address |
|---------------------------|---|
| JP Morgan Chase | 1 Chase Manhattan Plaza, New York, NY 10005 |
| | |

28.02 For all agreements that do not comply with the requirements of the NAIC Financial Condition Examiners Handbook, provide the name, location and a complete explanation:

| 1 Name(s) | 2 Location(s) | 3 Complete Explanation(s) |
|--------------|------------------|------------------------------|
| | | |
| | | |

28.03 Have there been any changes, including name changes, in the custodian(s) identified in 28.01 during the current year? Yes [] No [X]

GENERAL INTERROGATORIES

28.04 If yes, give full and complete information relating thereto:

| 1 Old Custodian | 2 New Custodian | 3 Date of Change | 4 Reason |
|--------------------|--------------------|---------------------|-------------|
| | | | |
| | | | |

28.05 Identify all investment advisors, broker/dealers or individuals acting on behalf of broker/dealers that have access to the investment accounts, handle securities and have authority to make investments on behalf of the reporting entity:

| 1 Central Registration Depository Number(s) | 2 Name | 3 Address |
|--|--------------------------------------|---------------------------------------|
| N/A | Liberty Mutual Group Asset Managemen | 175 Berkeley Street, Boston, MA 02116 |
| | | |

29.1 Does the reporting entity have any diversified mutual funds reported in Schedule D – Part 2 (diversified according to the Securities and Exchange Commission (SEC) in the Investment Company Act of 1940 [Section 5 (b) (1)])?

Yes [] No [X]

29.2 If yes, complete the following schedule:

| 1 CUSIP # | 2 Name of Mutual Fund | 3 Book/Adjusted Carrying Value |
|---------------|--------------------------|-----------------------------------|
| | | 0 |
| | | 0 |
| | | 0 |
| 29.2999 TOTAL | | 0 |

29.3 For each mutual fund listed in the table above, complete the following schedule:

| 1 Name of Mutual Fund (from above table) | 2 Name of Significant Holding of the Mutual Fund | 3 Amount of Mutual Fund's Book/Adjusted Carrying Value Attributable to the Holding | 4 Date of Valuation |
|--|--|---|------------------------|
| | | 0 | |
| | | 0 | |
| | | 0 | |

30. Provide the following information for all short-term and long-term bonds and all preferred stocks. Do not substitute amortized value or statement value for fair value.

| | 1 Statement (Admitted) Value | 2 Fair Value | 3 Excess of Statement over Fair Value (-), or Fair Value over Statement (+) |
|-----------------------|------------------------------------|-----------------|---|
| 30.1 Bonds | 62,029,472 | 64,913,967 | 2,884,495 |
| 30.2 Preferred stocks | 0 | 0 | 0 |
| 30.3 Totals | 62,029,472 | 64,913,967 | 2,884,495 |

30.4 Describe the sources or methods utilized in determining the fair values:

The primary source for reported fair values is our pricing vendor, Interactive Data Corporation, followed by backfill from Reuters, Bloomberg, Barclays, Merrill Lynch, and Markit for Term Loan securities. Lastly, management determines fair value based on quoted market prices of similar financial instruments or by using industry recognized valuation techniques.

31.1 Was the rate used to calculate fair value determined by a broker or custodian for any of the securities in Schedule D?

Yes [] No [X]

31.2 If the answer to 31.1 is yes, does the reporting entity have a copy of the broker's or custodian's pricing policy (hard copy or electronic copy) for all brokers or custodians used as a pricing source?

Yes [] No []

GENERAL INTERROGATORIES

31.3 If the answer to 31.2 is no, describe the reporting entity's process for determining a reliable pricing source for purposes of disclosure of fair value for Schedule D:

.....

32.1 Have all the filing requirements of the Purposes and Procedures Manual of the NAIC Securities Valuation Office been followed?

Yes No

32.2 If no, list exceptions:

.....

OTHER

33.1 Amount of payments to trade associations, service organizations and statistical or Rating Bureaus, if any?

\$ 0

33.2 List the name of the organization and the amount paid if any such payment represented 25% or more of the total payments to trade associations, service organizations and statistical or rating bureaus during the period covered by this statement.

| 1 Name | 2 Amount Paid |
|-----------|------------------|
| 0 | \$ 0 |
| | \$ 0 |
| | \$ 0 |

34.1 Amount of payments for legal expenses, if any?

\$ 0

34.2 List the name of the firm and the amount paid if any such payment represented 25% or more of the total payments for legal expenses during the period covered by this statement.

| 1 Name | 2 Amount Paid |
|-----------|------------------|
| | \$ 0 |
| | \$ 0 |
| | \$ 0 |

35.1 Amount of payments for expenditures in connection with matters before legislative bodies, officers or departments of government, if any?

\$ 0

35.2 List the name of the firm and the amount paid if any such payment represented 25% or more of the total payment expenditures in connection with matters before legislative bodies, officers or departments of government during the period covered by this statement.

| 1 Name | 2 Amount Paid |
|-----------|------------------|
| | \$ 0 |
| | \$ 0 |
| | \$ 0 |

GENERAL INTERROGATORIES

PART 2 – PROPERTY & CASUALTY INTERROGATORIES

1.1 Does the reporting entity have any direct Medicare Supplement Insurance in force? Yes [] No [X]

1.2 If yes, indicate premium earned on U.S. business only. \$ 0

1.3 What portion of Item (1.2) is not reported on the Medicare Supplement Insurance Experience Exhibit? \$ 0

1.31 Reason for excluding

.....

.....

.....

1.4 Indicate amount of earned premium attributable to Canadian and/or Other Alien not included in Item (1.2) above. \$ 0

1.5 Indicate total incurred claims on all Medicare Supplement insurance. \$ 0

1.6 Individual policies:

Most current three years:

1.61 Total premium earned \$ 0

1.62 Total incurred claims \$ 0

1.63 Number of covered lives 0

All years prior to most current three years:

1.64 Total premium earned \$ 0

1.65 Total incurred claims \$ 0

1.66 Number of covered lives 0

1.7 Group policies:

Most current three years:

1.71 Total premium earned \$ 0

1.72 Total incurred claims \$ 0

1.73 Number of covered lives 0

All years prior to most current three years:

1.74 Total premium earned \$ 0

1.75 Total incurred claims \$ 0

1.76 Number of covered lives 0

2. Health Test:

| | 1 | | 2 | |
|-------------------------------|-----------------------|--|-----------------------|--|
| | Current Year | | Prior Year | |
| 2.1 Premium Numerator | \$ <u> 0</u> | | \$ <u> 0</u> | |
| 2.2 Premium Denominator | \$ <u> 0</u> | | \$ <u> 0</u> | |
| 2.3 Premium Ratio (2.1 / 2.2) | <u> 0.00</u> | | <u> 0.00</u> | |
| 2.4 Reserve Numerator | \$ <u> 0</u> | | \$ <u> 0</u> | |
| 2.5 Reserve Denominator | \$ <u> 0</u> | | \$ <u> 0</u> | |
| 2.6 Reserve Ratio (2.4 / 2.5) | <u> 0.00</u> | | <u> 0.00</u> | |

3.1 Does the reporting entity issue both participating and non-participating policies? Yes [X] No []

3.2 If yes, state the amount of calendar year premiums written on:

3.21 Participating policies \$ 209,550

3.22 Non-participating policies \$ 35,680,328

4. For Mutual reporting entities and Reciprocal Exchanges only:

4.1 Does the reporting entity issue assessable policies? Yes [] No [X]

4.2 Does the reporting entity issue non-assessable policies? Yes [] No [X]

4.3 If assessable policies are issued, what is the extent of the contingent liability of the policyholders? 0 %

4.4 Total amount of assessments paid or ordered to be paid during the year on deposit notes or contingent premiums. \$ 0

5. For Reciprocal Exchanges Only:

5.1 Does the exchange appoint local agents? Yes [] No [X]

5.2 If yes, is the commission paid:

5.21 Out of Attorney's-in-fact compensation Yes [] No [] N/A [X]

5.22 As a direct expense of the exchange Yes [] No [] N/A [X]

5.3 What expenses of the Exchange are not paid out of the compensation of the Attorney-in-fact?
N/A

.....

.....

.....

5.4 Has any Attorney-in-fact compensation, contingent on fulfillment of certain conditions, been deferred? Yes [] No [X]

5.5 If yes, give full information

.....

.....

.....

6.1 What provision has this reporting entity made to protect itself from an excessive loss in the event of a catastrophe under a workers' compensation contract issued without limit loss:
See Note 21C1

.....

.....

.....

GENERAL INTERROGATORIES

PART 2 – PROPERTY & CASUALTY INTERROGATORIES

- 6.2 Describe the method used to estimate this reporting entity's probable maximum insurance loss, and identify the type of insured exposures comprising that probable maximum loss, the locations of concentrations of those exposures and the external resources (such as consulting firms or computer software models), if any, used in the estimation process:
See Note 21C1
.....
.....
- 6.3 What provision has this reporting entity made (such as a catastrophic reinsurance program) to protect itself from an excessive loss arising from the types and concentrations of insured exposures comprising its probable maximum property insurance loss?
See Note 21C1
.....
.....
- 6.4 Does the reporting entity carry catastrophe reinsurance protection for at least one reinstatement, in an amount sufficient to cover its estimated probable maximum loss attributable to a single loss event or occurrence? Yes [] No [X]
- 6.5 If no, describe any arrangements or mechanisms employed by the reporting entity to supplement its catastrophe reinsurance program or to hedge its exposure to unreinsured catastrophic loss
The Company cedes 100% of its business to Liberty Mutual Insurance Company, the lead company in the Liberty Mutual Pool. Liberty Mutual Insurance Company purchases external catastrophe reinsurance coverage.
.....
.....
- 7.1 Has the reporting entity reinsured any risk with any other entity under a quota share reinsurance contract that includes a provision that would limit the reinsurer's losses below the stated quota share percentage (e.g., a deductible, a loss ratio corridor, a loss cap, an aggregate limit or any similar provisions)? Yes [] No [X]
- 7.2 If yes, indicate the number of reinsurance contracts containing such provisions. _____ 0
- 7.3 If yes, does the amount of reinsurance credit taken reflect the reduction in quota share coverage caused by any applicable limiting provision(s)? Yes [] No []
- 8.1 Has this reporting entity reinsured any risk with any other entity and agreed to release such entity from liability, in whole or in part, from any loss that may occur on this risk, or portion thereof, reinsured? Yes [] No [X]
- 8.2 If yes, give full information
.....
.....
- 9.1 Has the reporting entity ceded any risk under any reinsurance contract (or under multiple contracts with the same reinsurer or its affiliates) for which during the period covered by the statement: (i) it recorded a positive or negative underwriting result greater than 5% of prior year-end surplus as regards policyholders or it reported calendar year written premium ceded or year-end loss and loss expense reserves ceded greater than 5% of prior year-end surplus as regards policyholders; (ii) it accounted for that contract as reinsurance and not as a deposit; and (iii) the contract(s) contain one or more of the following features or other features that would have similar results:
(a) A contract term longer than two years and the contract is noncancellable by the reporting entity during the contract term;
(b) A limited or conditional cancellation provision under which cancellation triggers an obligation by the reporting entity, or an affiliate of the reporting entity, to enter into a new reinsurance contract with the reinsurer, or an affiliate of the reinsurer;
(c) Aggregate stop loss reinsurance coverage;
(d) A unilateral right by either party (or both parties) to commute the reinsurance contract, whether conditional or not, except for such provisions which are only triggered by a decline in the credit status of the other party;
(e) A provision permitting reporting of losses, or payment of losses, less frequently than on a quarterly basis (unless there is no activity during the period); or
(f) Payment schedule, accumulating retentions from multiple years or any features inherently designed to delay timing of the reimbursement to the ceding entity. Yes [] No [X]
- 9.2 Has the reporting entity during the period covered by the statement ceded any risk under any reinsurance contract (or under multiple contracts with the same reinsurer or its affiliates), for which, during the period covered by the statement, it recorded a positive or negative underwriting result greater than 5% of prior year-end surplus as regards policyholders or it reported calendar year written premium ceded or year-end loss and loss expense reserves ceded greater than 5% of prior year-end surplus as regards policyholders; excluding cessions to approved pooling arrangements or to captive insurance companies that are directly or indirectly controlling, controlled by, or under common control with (i) one or more unaffiliated policyholders of the reporting entity, or (ii) an association of which one or more unaffiliated policyholders of the reporting entity is a member where:
(a) The written premium ceded to the reinsurer by the reporting entity or its affiliates represents fifty percent (50%) or more of the entire direct and assumed premium written by the reinsurer based on its most recently available financial statement; or
(b) Twenty-five percent (25%) or more of the written premium ceded to the reinsurer has been retroceded back to the reporting entity or its affiliates in a separate reinsurance contract. Yes [] No [X]
- 9.3 If yes to 9.1 or 9.2, please provide the following information in the Reinsurance Summary Supplemental Filing for General Interrogatory 9:
(a) The aggregate financial statement impact gross of all such ceded reinsurance contracts on the balance sheet and statement of income;
(b) A summary of the reinsurance contract terms and indicate whether it applies to the contracts meeting the criteria in 9.1 or 9.2; and
(c) A brief discussion of management's principle objectives in entering into the reinsurance contract including the economic purpose to be achieved.
- 9.4 Except for transactions meeting the requirements of paragraph 31 of SSAP No. 62R, Property and Casualty Reinsurance, has the reporting entity ceded any risk under any reinsurance contract (or multiple contracts with the same reinsurer or its affiliates) during the period covered by the financial statement, and either:
(a) Accounted for that contract as reinsurance (either prospective or retroactive) under statutory accounting principles ("SAP") and as a deposit under generally accepted accounting principles ("GAAP"); or
(b) Accounted for that contract as reinsurance under GAAP and as a deposit under SAP? Yes [] No [X]
- 9.5 If yes to 9.4, explain in the Reinsurance Summary Supplemental Filing for General Interrogatory 9 (Section D) why the contract(s) is treated differently for GAAP and SAP.
- 9.6 The reporting entity is exempt from the Reinsurance Attestation Supplement under one or more of the following criteria:
(a) The entity does not utilize reinsurance; or, Yes [] No [X]
(b) The entity only engages in a 100% quota share contract with an affiliate and the affiliated or lead company has filed an attestation supplement; or Yes [] No [X]
(c) The entity has no external cessions and only participates in an intercompany pool and the affiliated or lead company has filed an attestation supplement. Yes [X] No []

GENERAL INTERROGATORIES

PART 2 – PROPERTY & CASUALTY INTERROGATORIES

10. If the reporting entity has assumed risks from another entity, there should be charged on account of such reinsurances a reserve equal to that which the original entity would have been required to charge had it retained the risks. Has this been done? Yes [] No [] N/A [X]
- 11.1 Has the reporting entity guaranteed policies issued by any other entity and now in force: Yes [] No [X]
- 11.2 If yes, give full information

- 12.1 If the reporting entity recorded accrued retrospective premiums on insurance contracts on Line 15.3 of the asset schedule, Page 2, state the amount of corresponding liabilities recorded for:
- | | | | | |
|---|--|----|---|--|
| 12.11 Unpaid losses | | \$ | 0 | |
| 12.12 Unpaid underwriting expenses (including loss adjustment expenses) | | \$ | 0 | |
- 12.2 Of the amount on Line 15.3, Page 2, state the amount that is secured by letters of credit, collateral and other funds? \$ 0
- 12.3 If the reporting entity underwrites commercial insurance risks, such as workers' compensation, are premium notes or promissory notes accepted from its insureds covering unpaid premiums and/or unpaid losses? Yes [] No [] N/A [X]
- 12.4 If yes, provide the range of interest rates charged under such notes during the period covered by this statement:
- | | | | | |
|------------|--|------|---|--|
| 12.41 From | | 0.00 | % | |
| 12.42 To | | 0.00 | % | |
- 12.5 Are letters of credit or collateral and other funds received from insureds being utilized by the reporting entity to secure premium notes or promissory notes taken by a reporting entity or to secure any of the reporting entity's reported direct unpaid loss reserves, including unpaid losses under loss deductible features of commercial policies? Yes [] No [X]
- 12.6 If yes, state the amount thereof at December 31 of current year:
- | | | | | |
|----------------------------------|--|----|---|--|
| 12.61 Letters of Credit | | \$ | 0 | |
| 12.62 Collateral and other funds | | \$ | 0 | |
- 13.1 Largest net aggregate amount insured in any one risk (excluding workers' compensation): \$ 0
- 13.2 Does any reinsurance contract considered in the calculation of this amount include an aggregate limit of recovery without also including a reinstatement provision? Yes [] No [X]
- 13.3 State the number of reinsurance contracts (excluding individual facultative risk certificates, but including facultative programs, automatic facilities or facultative obligatory contracts) considered in the calculation of the amount. 1
- 14.1 Is the company a cedant in a multiple cedant reinsurance contract? Yes [X] No []
- 14.2 If yes, please describe the method of allocating and recording reinsurance among the cedants:
 Premiums and recoverables were allocated pursuant to the intercompany pooling agreement.

- 14.3 If the answer to 14.1 is yes, are the methods described in item 14.2 entirely contained in the respective multiple cedant reinsurance contracts? Yes [] No [X]
- 14.4 If the answer to 14.3 is no, are all the methods described in 14.2 entirely contained in written agreements? Yes [X] No []
- 14.5 If the answer to 14.4 is no, please explain:
 N/A

- 15.1 Has the reporting entity guaranteed any financed premium accounts? Yes [] No [X]
- 15.2 If yes, give full information

- 16.1 Does the reporting entity write any warranty business? Yes [] No [X]
 If yes, disclose the following information for each of the following types of warranty coverage:
- | | | 1 | 2 | 3 | 4 | 5 |
|------------------|----|---------------------------|-------------------------|---------------------------|----------------------------|--------------------------|
| | | Direct Losses Incurred | Direct Losses Unpaid | Direct Written Premium | Direct Premium Unearned | Direct Premium Earned |
| 16.11 Home | \$ | 0 | 0 | 0 | 0 | 0 |
| 16.12 Products | \$ | 0 | 0 | 0 | 0 | 0 |
| 16.13 Automobile | \$ | 0 | 0 | 0 | 0 | 0 |
| 16.14 Other* | \$ | 0 | 0 | 0 | 0 | 0 |

* Disclose type of coverage: _____

GENERAL INTERROGATORIES**PART 2 – PROPERTY & CASUALTY INTERROGATORIES**

17.1 Does the reporting entity include amounts recoverable on unauthorized reinsurance in Schedule F – Part 3 that it excludes from Schedule F – Part 5.

Yes [] No [X]

Incurred but not reported losses on contracts in force prior to July 1, 1984, and not subsequently renewed are exempt from inclusion in Schedule F – Part 5. Provide the following information for this exemption:

| | |
|--|-------------|
| 17.11 Gross amount of unauthorized reinsurance in Schedule F – Part 3 excluded from Schedule F – Part 5 | \$ <u>0</u> |
| 17.12 Unfunded portion of Interrogatory 17.11 | \$ <u>0</u> |
| 17.13 Paid losses and loss adjustment expenses portion of Interrogatory 17.11 | \$ <u>0</u> |
| 17.14 Case reserves portion of Interrogatory 17.11 | \$ <u>0</u> |
| 17.15 Incurred but not reported portion of Interrogatory 17.11 | \$ <u>0</u> |
| 17.16 Unearned premium portion of Interrogatory 17.11 | \$ <u>0</u> |
| 17.17 Contingent commission portion of Interrogatory 17.11 | \$ <u>0</u> |

Provide the following information for all other amounts included in Schedule F – Part 3 and excluded from Schedule F – Part 5, not included above.

| | |
|--|-------------|
| 17.18 Gross amount of unauthorized reinsurance in Schedule F – Part 3 excluded from Schedule F – Part 5 | \$ <u>0</u> |
| 17.19 Unfunded portion of Interrogatory 17.18 | \$ <u>0</u> |
| 17.20 Paid losses and loss adjustment expenses portion of Interrogatory 17.18 | \$ <u>0</u> |
| 17.21 Case reserves portion of Interrogatory 17.18 | \$ <u>0</u> |
| 17.22 Incurred but not reported portion of Interrogatory 17.18 | \$ <u>0</u> |
| 17.23 Unearned premium portion of Interrogatory 17.18 | \$ <u>0</u> |
| 17.24 Contingent commission portion of Interrogatory 17.18 | \$ <u>0</u> |

18.1 Do you act as a custodian for health savings accounts?

Yes [] No [X]

18.2 If yes, please provide the amount of custodial funds held as of the reporting date.

\$ 0

18.3 Do you act as an administrator for health savings accounts?

Yes [] No [X]

18.4 If yes, please provide the balance of the funds administered as of the reporting date.

\$ 0

FIVE – YEAR HISTORICAL DATA

Show amounts in whole dollars only, no cents; show percentages to one decimal place, i.e., 17.6.

| | 1 | 2 | 3 | 4 | 5 |
|---|-------------|---------------|--------------|-------------|-------------|
| | 2014 | 2013 | 2012 | 2011 | 2010 |
| Gross Premiums Written (Page 8, Part 1B, Cols. 1, 2 & 3) | | | | | |
| 1. Liability lines (Lines 11.1, 11.2, 16, 17.1, 17.2, 17.3, 18.1, 18.2, 19.1, 19.2 & 19.3, 19.4) | 31,813,929 | 251,969,642 | 624,266,407 | 631,996,309 | 661,531,834 |
| 2. Property lines (Lines 1, 2, 9, 12, 21 & 26) | 775,425 | 3,829,854 | 32,491,503 | 31,226,974 | 24,834,810 |
| 3. Property and liability combined lines (Lines 3, 4, 5, 8, 22 & 27) | 3,275,775 | 25,334,291 | 80,150,650 | 74,180,564 | 68,323,310 |
| 4. All other lines (Lines 6, 10, 13, 14, 15, 23, 24, 28, 29, 30 & 34) | 24,749 | 338,686 | 291,034 | 151,807 | 105,152 |
| 5. Nonproportional reinsurance lines (Lines 31, 32 & 33) | | (115,843) | 1,276,800 | 1,057,076 | 1,059,725 |
| 6. Total (Line 35) | 35,889,878 | 281,356,630 | 738,476,394 | 738,612,730 | 755,854,831 |
| Net Premiums Written (Page 8, Part 1B, Col. 6) | | | | | |
| 7. Liability lines (Lines 11.1, 11.2, 16, 17.1, 17.2, 17.3, 18.1, 18.2, 19.1, 19.2 & 19.3, 19.4) | | (10,372,344) | 31,603,180 | 28,607,912 | 27,432,681 |
| 8. Property lines (Lines 1, 2, 9, 12, 21 & 26) | | (5,398,008) | 9,648,082 | 8,037,650 | 6,583,536 |
| 9. Property and liability combined lines (Lines 3, 4, 5, 8, 22 & 27) | | (5,565,075) | 9,584,975 | 8,039,499 | 7,083,828 |
| 10. All other lines (Lines 6, 10, 13, 14, 15, 23, 24, 28, 29, 30 & 34) | | (70,684) | 111,188 | 53,289 | 49,659 |
| 11. Nonproportional reinsurance lines (Lines 31, 32 & 33) | | (115,843) | 1,276,800 | 1,057,076 | 1,059,725 |
| 12. Total (Line 35) | | (21,521,954) | 52,224,225 | 45,795,426 | 42,209,429 |
| Statement of Income (Page 4) | | | | | |
| 13. Net underwriting gain (loss) (Line 8) | | | (10,877,306) | (7,486,703) | (3,347,992) |
| 14. Net investment gain (loss) (Line 11) | 2,095,514 | 3,761,518 | 7,186,022 | 7,133,148 | 7,635,146 |
| 15. Total other income (Line 15) | (14,629) | 13,643 | (198,842) | (1,065,206) | (422,973) |
| 16. Dividends to policyholders (Line 17) | | | 98,414 | 162,718 | 251,791 |
| 17. Federal and foreign income taxes incurred (Line 19) | (521,150) | (5,186,420) | (1,495,297) | (302,907) | (758,089) |
| 18. Net income (Line 20) | 2,602,035 | 8,961,581 | (2,493,243) | (1,278,572) | 4,370,479 |
| Balance Sheet Lines (Pages 2 and 3) | | | | | |
| 19. Total admitted assets excluding protected cell business (Page 2, Line 26, Col. 3) | 96,128,883 | 99,744,311 | 286,810,522 | 284,476,242 | 270,685,842 |
| 20. Premiums and considerations (Page 2, Col. 3) | | | | | |
| 20.1 In course of collection (Line 15.1) | | (60) | 4,875,243 | 4,783,868 | 4,186,674 |
| 20.2 Deferred and not yet due (Line 15.2) | | | 15,618,821 | 13,290,391 | 10,949,078 |
| 20.3 Accrued retrospective premiums (Line 15.3) | | | 1,176,583 | 1,638,702 | 2,291,097 |
| 21. Total liabilities excluding protected cell business (Page 3, Line 26) | 31,589,655 | 38,612,345 | 192,542,721 | 183,166,765 | 170,866,948 |
| 22. Losses (Page 3, Line 1) | | | 76,662,399 | 71,014,801 | 69,763,188 |
| 23. Loss adjustment expenses (Page 3, Line 3) | | | 15,784,323 | 14,719,099 | 13,981,019 |
| 24. Unearned premiums (Page 3, Line 9) | | | 22,792,096 | 20,392,878 | 18,983,908 |
| 25. Capital paid up (Page 3, Lines 30 & 31) | 4,500,000 | 4,500,000 | 4,500,000 | 4,500,000 | 4,500,000 |
| 26. Surplus as regards policyholders (Page 3, Line 37) | 64,539,228 | 61,131,966 | 94,267,801 | 101,309,477 | 99,818,894 |
| Cash Flow (Page 5) | | | | | |
| 27. Net cash from operations (Line 11) | (4,856,249) | (115,116,885) | 162,976 | 3,024,660 | 27,578,244 |
| Risk-Based Capital Analysis | | | | | |
| 28. Total adjusted capital | 64,539,228 | 61,131,966 | 94,267,801 | 101,309,477 | 99,818,894 |
| 29. Authorized control level risk-based capital | 241,466 | 268,152 | 7,620,282 | 6,419,877 | 6,053,823 |
| Percentage Distribution of Cash, Cash Equivalents and Invested Assets (Page 2, Col. 3) (Item divided by Page 2, Line 12, Col. 3) x 100.0 | | | | | |
| 30. Bonds (Line 1) | 94.7 | 97.6 | 94.0 | 91.3 | 91.0 |
| 31. Stocks (Lines 2.1 & 2.2) | | | | | |
| 32. Mortgage loans on real estate (Lines 3.1 and 3.2) | | | | | |
| 33. Real estate (Lines 4.1, 4.2 & 4.3) | | | | | |
| 34. Cash, cash equivalents and short-term investments (Line 5) | 2.3 | 0.6 | 1.7 | 2.2 | 3.5 |
| 35. Contract loans (Line 6) | | | | | |
| 36. Derivatives (Line 7) | | | | | |
| 37. Other invested assets (Line 8) | | | | | |
| 38. Receivables for securities (Line 9) | | | | | |
| 39. Securities lending reinvested collateral assets (Line 10) | 3.1 | 1.8 | 4.2 | 6.5 | 5.5 |
| 40. Aggregate write-ins for invested assets (Line 11) | | | | | |
| 41. Cash, cash equivalents and invested assets (Line 12) | 100.0 | 100.0 | 100.0 | 100.0 | 100.0 |
| Investments in Parent, Subsidiaries and Affiliates | | | | | |
| 42. Affiliated bonds, (Sch. D, Summary, Line 12, Col. 1) | | | | | |
| 43. Affiliated preferred stocks (Sch. D, Summary, Line 18, Col. 1) | | | | | |
| 44. Affiliated common stocks (Sch. D, Summary, Line 24, Col. 1) | | | | | |
| 45. Affiliated short-term investments (subtotals included in Schedule DA Verification, Col. 5, Line 10) | | | | | |
| 46. Affiliated mortgage loans on real estate | | | | | |
| 47. All other affiliated | | | | | |
| 48. Total of above Lines 42 to 47 | | | | | |
| 49. Total investment in parent included in Lines 42 to 47 above | | | | | |
| 50. Percentage of investments in parent, subsidiaries and affiliates to surplus as regards policyholders (Line 48 above divided by Page 3, Col. 1, Line 37 x 100.0) | | | | | |

FIVE – YEAR HISTORICAL DATA

(Continued)

| | 1 | 2 | 3 | 4 | 5 |
|--|-------------|--------------|-------------|-------------|-------------|
| | 2014 | 2013 | 2012 | 2011 | 2010 |
| Capital and Surplus Accounts (Page 4) | | | | | |
| 51. Net unrealized capital gains (losses) (Line 24) | 6,988 | 4,935 | 326,002 | 297,196 | (165,944) |
| 52. Dividends to stockholders (Line 35) | | (17,954,665) | | | |
| 53. Change in surplus as regards policyholders for the year (Line 38) | 3,407,262 | (33,135,835) | (7,041,676) | 1,490,583 | 4,306,404 |
| Gross Losses Paid (Page 9, Part 2, Cols. 1 & 2) | | | | | |
| 54. Liability lines (Lines 11.1, 11.2, 16, 17.1, 17.2, 17.3, 18.1, 18.2, 19.1, 19.2 & 19.3, 19.4) | 290,253,255 | 470,807,447 | 464,628,190 | 422,683,012 | 394,062,160 |
| 55. Property lines (Lines 1, 2, 9, 12, 21 & 26) | 2,032,142 | 17,678,165 | 25,112,204 | 22,311,909 | 15,222,410 |
| 56. Property and liability combined lines (Lines 3, 4, 5, 8, 22 & 27) | 21,640,698 | 33,750,604 | 34,721,044 | 27,069,933 | 24,304,049 |
| 57. All other lines (Lines 6, 10, 13, 14, 15, 23, 24, 28, 29, 30 & 34) | 754,654 | 137,246 | 8,673 | 24,121 | 53,326 |
| 58. Nonproportional reinsurance lines (Lines 31, 32 & 33) | | 2,593,164 | 479,510 | 439,185 | 763,259 |
| 59. Total (Line 35) | 314,680,749 | 524,966,626 | 524,949,621 | 472,528,160 | 434,405,204 |
| Net Losses Paid (Page 9, Part 2, Col. 4) | | | | | |
| 60. Liability lines (Lines 11.1, 11.2, 16, 17.1, 17.2, 17.3, 18.1, 18.2, 19.1, 19.2 & 19.3, 19.4) | | 68,460,601 | 18,868,555 | 19,352,533 | 15,644,470 |
| 61. Property lines (Lines 1, 2, 9, 12, 21 & 26) | | 1,678,655 | 5,850,515 | 4,695,058 | 3,956,678 |
| 62. Property and liability combined lines (Lines 3, 4, 5, 8, 22 & 27) | | 3,806,469 | 4,956,948 | 4,900,606 | 4,062,639 |
| 63. All other lines (Lines 6, 10, 13, 14, 15, 23, 24, 28, 29, 30 & 34) | | 135,679 | 8,673 | 24,121 | 53,326 |
| 64. Nonproportional reinsurance lines (Lines 31, 32 & 33) | | 2,593,164 | 479,510 | 439,185 | 763,259 |
| 65. Total (Line 35) | | 76,674,568 | 30,164,201 | 29,411,503 | 24,480,372 |
| Operating Percentages (Page 4) (Item divided by Page 4, Line 1) x 100.0 | | | | | |
| 66. Premiums earned (Line 1) | 100.0 | 100.0 | 100.0 | 100.0 | 100.0 |
| 67. Losses incurred (Line 2) | | | 72.6 | 70.3 | 65.1 |
| 68. Loss expenses incurred (Line 3) | | | 17.8 | 19.8 | 17.9 |
| 69. Other underwriting expenses incurred (Line 4) | | | 31.7 | 27.1 | 25.1 |
| 70. Net underwriting gain (loss) (Line 8) | | | (22.1) | (17.2) | (8.1) |
| Other Percentages | | | | | |
| 71. Other underwriting expenses to net premiums written (Page 4, Lines 4 + 5 - 15 divided by Page 8, Part 1B, Col. 6, Line 35 x 100.0) | | 0.1 | 30.3 | 28.1 | 25.6 |
| 72. Losses and loss expenses incurred to premiums earned (Page 4, Lines 2 + 3 divided by Page 4, Line 1 x 100.0) | | | 90.3 | 90.1 | 83.0 |
| 73. Net premiums written to policyholders' surplus (Page 8, Part 1B, Col. 6, Line 35 divided by Page 3, Line 37, Col. 1 x 100.0) | | (35.2) | 55.4 | 45.2 | 42.3 |
| One Year Loss Development (000 omitted) | | | | | |
| 74. Development in estimated losses and loss expenses incurred prior to current year (Schedule P, Part 2-Summary, Line 12, Col. 11) | | | 2,443 | 2,093 | (460) |
| 75. Percent of development of losses and loss expenses incurred to policyholders' surplus of prior year end (Line 74 above divided by Page 4, Line 21, Col. 1 x 100.0) | | | 2.4 | 2.1 | (0.5) |
| Two Year Loss Development (000 omitted) | | | | | |
| 76. Development in estimated losses and loss expenses incurred 2 years before the current year and prior year (Schedule P, Part 2-Summary, Line 12, Col. 12) | | | 3,889 | 1,041 | (434) |
| 77. Percent of development of losses and loss expenses incurred to reported policyholders' surplus of second prior year end (Line 76 above divided by Page 4, Line 21, Col. 2 x 100.0) | | | 3.9 | 1.1 | (0.5) |

NOTE: If a party to a merger, have the two most recent years of this exhibit been restated due to a merger in compliance with the disclosure requirements of SSAP No. 3, Accounting Changes and Correction of Errors?

Yes [] No []

If no, please explain:

.....
.....
.....

NONE **Schedule P - Part 1 - Summary**

NONE **Schedule P - Part 2, 3, 4 - Summary**

SCHEDULE T - EXHIBIT OF PREMIUMS WRITTEN Allocated By States and Territories

| States, Etc. | 1 | Gross Premiums, Including Policy and Membership Fees Less Return Premiums and Premiums on Policies Not Taken | | 4 | 5 | 6 | 7 | 8 | 9 |
|------------------------------|---------------|--|------------------------|--|--|------------------------|----------------------|--|---|
| | | 2 | 3 | | | | | | |
| | Active Status | Direct Premiums Written | Direct Premiums Earned | Dividends Paid or Credited to Policyholders on Direct Business | Direct Losses Paid (Deducting Salvage) | Direct Losses Incurred | Direct Losses Unpaid | Finance and Service Charges Not Included in Premiums | Direct Premium Written for Federal Purchasing Groups (Included in Col. 2) |
| 1. Alabama | AL | L | 2,474 | 1,042,386 | (2) | 5,529,650 | 2,586,271 | 13,570,718 | |
| 2. Alaska | AK | L | 55,764 | 622,663 | | 1,844,505 | 517,228 | 11,101,594 | |
| 3. Arizona | AZ | L | (581,398) | 367,892 | 33 | 3,407,077 | 1,974,810 | 21,461,035 | |
| 4. Arkansas | AR | L | 199,015 | 445,545 | (3,194) | 965,623 | (739,363) | 3,947,014 | |
| 5. California | CA | L | 9,120,854 | 20,332,413 | 7 | 71,666,947 | 39,165,823 | 231,582,222 | |
| 6. Colorado | CO | L | (154,363) | 697,539 | 13 | 2,035,120 | 527,548 | 9,564,853 | |
| 7. Connecticut | CT | L | 429,348 | 359,422 | 19 | 5,413,015 | 2,910,416 | 16,493,523 | |
| 8. Delaware | DE | L | (61,076) | 184,666 | (3,018) | 900,822 | 467,076 | 6,191,113 | |
| 9. District of Columbia | DC | L | 196,367 | 418,871 | 224 | 1,249,855 | 719,391 | 4,808,937 | |
| 10. Florida | FL | L | 2,027,723 | 4,940,798 | 75,043 | 13,551,980 | 11,107,158 | 37,669,457 | |
| 11. Georgia | GA | L | 1,037,055 | 2,532,937 | (184) | 7,800,182 | 1,413,143 | 15,449,236 | |
| 12. Hawaii | HI | L | 49,812 | 216,810 | | 320,414 | 36,208 | 1,312,139 | |
| 13. Idaho | ID | L | 216,114 | 554,379 | 11 | 793,516 | 563,709 | 3,075,430 | |
| 14. Illinois | IL | L | 2,360,913 | 5,137,405 | 737 | 13,668,983 | 5,367,346 | 46,901,147 | |
| 15. Indiana | IN | L | 314,139 | 973,828 | (23,243) | 4,247,083 | 107,359 | 12,508,221 | |
| 16. Iowa | IA | L | 609,459 | 895,748 | (4,973) | 3,469,969 | 1,955,581 | 8,322,294 | |
| 17. Kansas | KS | L | 169,860 | 905,893 | 90 | 1,618,124 | 52,879 | 6,846,617 | |
| 18. Kentucky | KY | L | 440,480 | 828,729 | 76 | 2,487,051 | (686,202) | 12,502,743 | |
| 19. Louisiana | LA | L | (67,819) | 721,834 | (17) | 6,683,261 | (830,011) | 12,183,744 | |
| 20. Maine | ME | L | 67,378 | 130,065 | (6) | 965,068 | 827,440 | 4,545,744 | |
| 21. Maryland | MD | L | (37,809) | 1,318,538 | (383) | 5,924,919 | (52,450) | 13,916,529 | |
| 22. Massachusetts | MA | L | 116,164 | 906,876 | (374) | 6,694,312 | 1,951,598 | 21,952,806 | |
| 23. Michigan | MI | L | 838,363 | 1,978,437 | (34) | 5,161,154 | 295,743 | 17,115,661 | |
| 24. Minnesota | MN | L | 1,760,459 | 2,963,843 | 5,281 | 6,603,345 | 2,290,473 | 35,610,919 | |
| 25. Mississippi | MS | L | 752,383 | 1,963,732 | 20 | 6,260,177 | 1,285,523 | 12,678,948 | |
| 26. Missouri | MO | L | 648,450 | 999,683 | (221) | 4,350,565 | 1,816,842 | 17,149,639 | |
| 27. Montana | MT | L | 78,818 | 554,236 | 11 | 1,149,114 | 858,050 | 6,081,681 | |
| 28. Nebraska | NE | L | 134,146 | 270,175 | 746 | 1,453,384 | (538,538) | 4,961,761 | |
| 29. Nevada | NV | L | 184,249 | 617,840 | 192 | 1,518,127 | 393,878 | 4,685,917 | |
| 30. New Hampshire | NH | L | 114,225 | 256,579 | 789 | 639,845 | (639,186) | 3,849,271 | |
| 31. New Jersey | NJ | L | 1,768,891 | 3,118,598 | 22,573 | 13,380,176 | 5,956,641 | 42,840,089 | |
| 32. New Mexico | NM | L | (761,174) | (242,358) | 16 | 2,037,162 | (615,675) | 4,734,529 | |
| 33. New York | NY | L | 3,476,045 | 5,046,860 | 36,274 | 15,822,180 | 4,125,001 | 54,577,434 | |
| 34. North Carolina | NC | L | 885,957 | 2,095,655 | (144) | 9,881,700 | 458,363 | 18,326,691 | |
| 35. North Dakota | ND | L | 215,421 | 284,717 | | 342,716 | 19,592 | 314,522 | |
| 36. Ohio | OH | L | (114,971) | 554,542 | 222 | 1,557,961 | (410,101) | 1,112,802 | |
| 37. Oklahoma | OK | L | (68,530) | 999,655 | 10 | 10,884,632 | 1,043,919 | 32,942,703 | |
| 38. Oregon | OR | L | 591,076 | 1,535,754 | 13 | 2,137,919 | 1,241,979 | 11,112,812 | |
| 39. Pennsylvania | PA | L | 552,862 | 2,710,423 | 423 | 10,425,303 | (1,210,110) | 32,738,911 | |
| 40. Rhode Island | RI | L | 67,436 | 145,852 | 11 | 1,062,193 | (198,808) | 1,712,704 | |
| 41. South Carolina | SC | L | 576,645 | 1,469,520 | 9 | 5,048,384 | 2,260,345 | 12,150,605 | |
| 42. South Dakota | SD | L | (216,124) | 21,189 | 41 | 1,161,110 | 116,202 | 3,559,430 | |
| 43. Tennessee | TN | L | 578,820 | 2,064,117 | (6,214) | 6,372,793 | 2,949,170 | 32,459,827 | |
| 44. Texas | TX | L | 726,562 | 4,447,487 | (5,407) | 17,990,032 | 8,459,220 | 67,006,939 | |
| 45. Utah | UT | L | 1,657,446 | 1,096,290 | (1) | 3,372,869 | 814,917 | 5,604,948 | |
| 46. Vermont | VT | L | 140,204 | 160,956 | | 2,016,184 | 928,379 | 6,595,799 | |
| 47. Virginia | VA | L | 71,110 | 1,261,425 | 110 | 5,024,703 | 113,387 | 14,120,674 | |
| 48. Washington | WA | L | 348,478 | 1,493,018 | 2 | 965,629 | 483,227 | 3,374,179 | |
| 49. West Virginia | WV | L | 100,124 | 323,608 | (4) | 594,645 | (1,063,056) | 2,251,048 | |
| 50. Wisconsin | WI | L | 4,325,156 | 5,105,908 | 674,307 | 16,164,802 | 2,743,841 | 63,164,930 | |
| 51. Wyoming | WY | L | (30,421) | 78,746 | | 29,203 | (44,454) | 60,148 | |
| 52. American Samoa | AS | N | | | | | | | |
| 53. Guam | GU | N | | | | | (1) | (2) | |
| 54. Puerto Rico | PR | L | (21,725) | (4,308) | | | (3,551) | 19,256 | |
| 55. U.S. Virgin Islands | VI | L | (899) | 2,944 | | 35,275 | 1,007,348 | 981,363 | |
| 56. Northern Mariana Islands | MP | N | | | | | | | |
| 57. Canada | CAN | N | | | | | | | |
| 58. Aggregate Other Alien | OT | X X X | (58) | 5,994 | (7) | | 6,777 | (703) | |
| 59. Totals | (a) 53 | | 35,889,878 | 87,916,354 | 769,877 | 314,680,758 | 104,888,295 | 1,029,802,551 | |

| DETAILS OF WRITE-INS | | | | | | | | | |
|--|-------|------|-------|-----|--|-------|-------|--|--|
| 58001. ZZZ Other Alien | X X X | (58) | 5,994 | (7) | | 6,777 | (703) | | |
| 58002. | X X X | | | | | | | | |
| 58003. | X X X | | | | | | | | |
| 58998. Summary of remaining write-ins for Line 58 from overflow page | X X X | | | | | | | | |
| 58999. Totals (Lines 58001 through 58003 plus 58998) (Line 58 above) | X X X | (58) | 5,994 | (7) | | 6,777 | (703) | | |

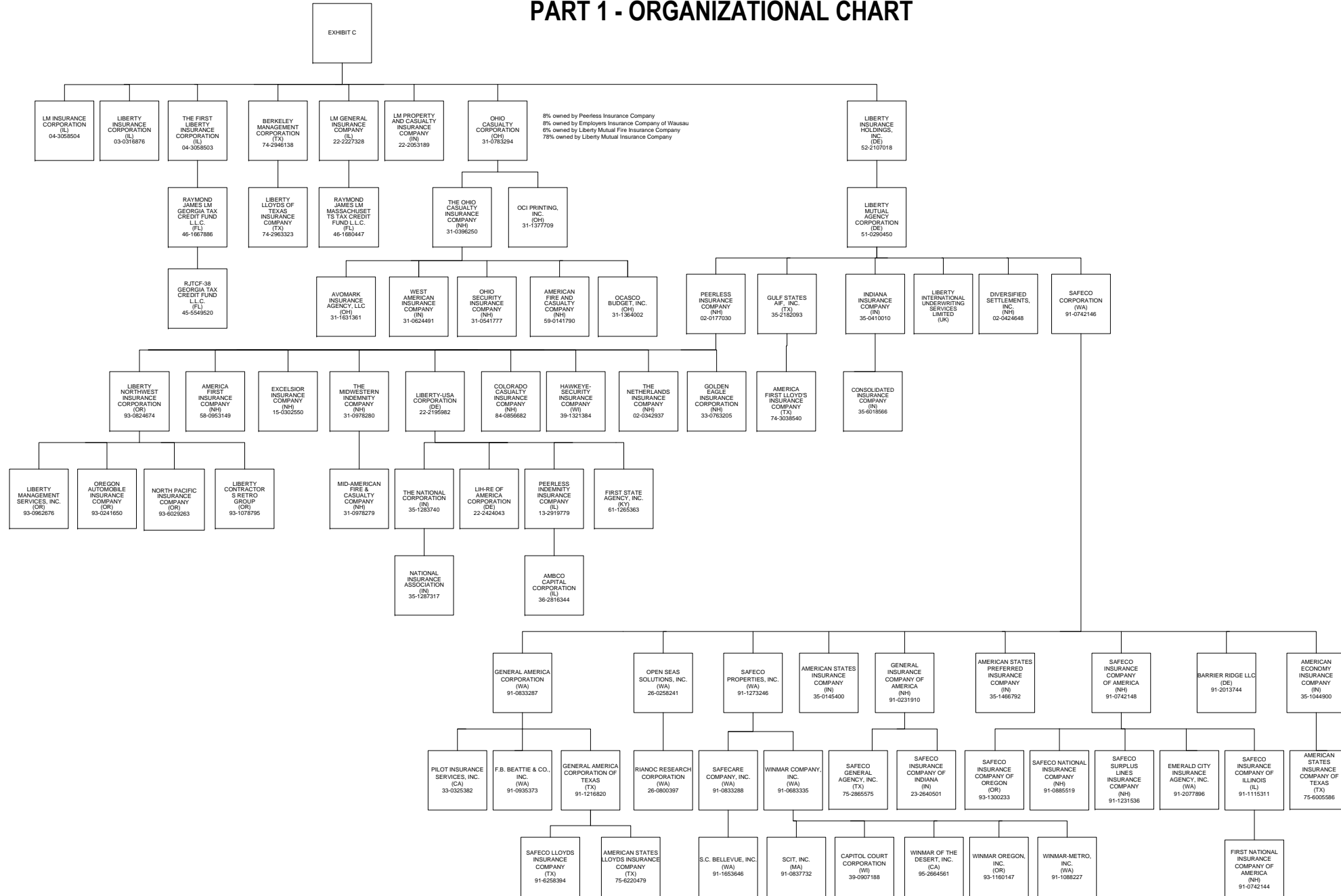
(L) Licensed or Chartered - Licensed Insurance Carrier or Domiciled RRG; (R) Registered - Non-domiciled RRGs; (Q) Qualified - Qualified or Accredited Reinsurer; (E) Eligible - Reporting Entities eligible or approved to write Surplus Lines in the state; (N) None of the above - Not allowed to write business in the state.

| Explanation of basis of allocation of premiums by states, etc. | |
|--|---|
| *Location of coverage - Fire, Allied Lines, Homeowners Multi Peril, Commercial Multi Peril, Earthquake, Boiler and Machinery | *Location of Court or Obligor - Surety |
| *States employee's main work place - Worker's Compensation | *Address of Assured - Other Accident and Health |
| *Location of Principal place of garaging of each individual car - Auto Liability, Auto Physical Damage | *Location of Properties covered - Burglary and Theft |
| *Principal Location of business or location of coverage - Liability other than Auto, Fidelity, Warranty | *Principal Location of Assured - Ocean Marine, Credit |
| *Point of origin of shipment or principal location of assured - Inland Marine | *Primary residence of Assured - Aircraft (all perils) |
| *State in which employees regularly work - Group Accident and Health | |

(a) Insert the number of L responses except for Canada and Other Alien.

SCHEDULE Y - INFORMATION CONCERNING ACTIVITIES OF INSURER MEMBERS OF A HOLDING COMPANY GROUP

PART 1 - ORGANIZATIONAL CHART



OVERFLOW PAGE FOR WRITE-INS

ALPHABETICAL INDEX TO PROPERTY ANNUAL STATEMENT

| | | | |
|---|------|--|------|
| Assets | 2 | Schedule E – Part 3 – Special Deposits | E28 |
| Cash Flow | 5 | Schedule E – Verification Between Years | SI15 |
| Exhibit of Capital Gains (Losses) | 12 | Schedule F – Part 1 | 20 |
| Exhibit of Net Investment Income | 12 | Schedule F – Part 2 | 21 |
| Exhibit of Nonadmitted Assets | 13 | Schedule F – Part 3 | 22 |
| Exhibit of Premiums and Losses (State Page) | 19 | Schedule F – Part 4 | 23 |
| Five-Year Historical Data | 17 | Schedule F – Part 5 | 24 |
| General Interrogatories | 15 | Schedule F – Part 6 - Section 1 | 25 |
| Jurat Page | 1 | Schedule F – Part 6 - Section 2 | 26 |
| Liabilities, Surplus and Other Funds | 3 | Schedule F – Part 7 | 27 |
| Notes To Financial Statements | 14 | Schedule F – Part 8 | 28 |
| Overflow Page For Write-ins | 100 | Schedule F – Part 9 | 29 |
| Schedule A – Part 1 | E01 | Schedule H – Accident and Health Exhibit – Part 1 | 30 |
| Schedule A – Part 2 | E02 | Schedule H – Part 2, Part 3 and Part 4 | 31 |
| Schedule A – Part 3 | E03 | Schedule H – Part 5 – Health Claims | 32 |
| Schedule A – Verification Between Years | SI02 | Schedule P – Part 1 – Summary | 33 |
| Schedule B – Part 1 | E04 | Schedule P – Part 1A – Homeowners/Farmowners | 35 |
| Schedule B – Part 2 | E05 | Schedule P – Part 1B – Private Passenger Auto Liability/Medical | 36 |
| Schedule B – Part 3 | E06 | Schedule P – Part 1C – Commercial Auto/Truck Liability/Medical | 37 |
| Schedule B – Verification Between Years | SI02 | Schedule P – Part 1D – Workers' Comp (Excluding Excess Workers' Comp) | 38 |
| Schedule BA – Part 1 | E07 | Schedule P – Part 1E – Commercial Multiple Peril | 39 |
| Schedule BA – Part 2 | E08 | Schedule P – Part 1F – Section 1 – Medical Professional Liability | |
| Schedule BA – Part 3 | E09 | – Occurrence | 40 |
| Schedule BA – Verification Between Years | SI03 | Schedule P – Part 1F – Section 2 – Medical Professional Liability | |
| Schedule D – Part 1 | E10 | – Claims-Made | 41 |
| Schedule D – Part 1A – Section 1 | SI05 | Schedule P – Part 1G – Special Liability (Ocean, Marine, Aircraft (All | |
| Schedule D – Part 1A – Section 2 | SI08 | Perils), Boiler and Machinery) | 42 |
| Schedule D – Part 2 – Section 1 | E11 | Schedule P – Part 1H – Section 1 – Other Liability – Occurrence | 43 |
| Schedule D – Part 2 – Section 2 | E12 | Schedule P – Part 1H – Section 2 – Other Liability – Claims-Made | 44 |
| Schedule D – Part 3 | E13 | Schedule P – Part 1I – Special Property (Fire, Allied Lines, Inland Marine, | |
| Schedule D – Part 4 | E14 | Earthquake, Burglary & Theft) | 45 |
| Schedule D – Part 5 | E15 | Schedule P – Part 1J – Auto Physical Damage | 46 |
| Schedule D – Part 6 – Section 1 | E16 | Schedule P – Part 1K – Fidelity/Surety | 47 |
| Schedule D – Part 6 – Section 2 | E16 | Schedule P – Part 1L – Other (Including Credit, Accident and Health) | 48 |
| Schedule D – Summary By Country | SI04 | Schedule P – Part 1M – International | 49 |
| Schedule D – Verification Between Years | SI03 | Schedule P – Part 1N – Reinsurance - Nonproportional Assumed Property | 50 |
| Schedule DA – Part 1 | E17 | Schedule P – Part 1O – Reinsurance - Nonproportional Assumed Liability | 51 |
| Schedule DA – Verification Between Years | SI10 | Schedule P – Part 1P – Reinsurance - Nonproportional Assumed Financial Lines | 52 |
| Schedule DB – Part A – Section 1 | E18 | Schedule P – Part 1R – Section 1 – Products Liability – Occurrence | 53 |
| Schedule DB – Part A – Section 2 | E19 | Schedule P – Part 1R – Section 2 – Products Liability – Claims – Made | 54 |
| Schedule DB – Part A – Verification Between Years | SI11 | Schedule P – Part 1S – Financial Guaranty/Mortgage Guaranty | 55 |
| Schedule DB – Part B – Section 1 | E20 | Schedule P – Part 1T – Warranty | 56 |
| Schedule DB – Part B – Section 2 | E21 | Schedule P – Part 2, Part 3 and Part 4 - Summary | 34 |
| Schedule DB – Part B – Verification Between Years | SI11 | Schedule P – Part 2A – Homeowners/Farmowners | 57 |
| Schedule DB – Part C – Section 1 | SI12 | Schedule P – Part 2B – Private Passenger Auto Liability/Medical | 57 |
| Schedule DB – Part C – Section 2 | SI13 | Schedule P – Part 2C – Commercial Auto/Truck Liability/Medical | 57 |
| Schedule DB - Part D - Section 1 | E22 | Schedule P – Part 2D – Workers' Comp (Excluding Excess Workers' Comp) | 57 |
| Schedule DB - Part D - Section 2 | E23 | Schedule P – Part 2E – Commercial Multiple Peril | 57 |
| Schedule DB - Verification | SI14 | Schedule P – Part 2F – Section 1 – Medical Professional Liability | |
| Schedule DL - Part 1 | E24 | – Occurrence | 58 |
| Schedule DL - Part 2 | E25 | Schedule P - Part 2F - Medical Professional Liability - Claims - Made | 58 |
| Schedule E – Part 1 – Cash | E26 | Schedule P – Part 2G – Special Liability (Ocean Marine, Aircraft (All Perils), | |
| Schedule E – Part 2 – Cash Equivalents | E27 | Boiler and Machinery) | 58 |

ALPHABETICAL INDEX TO PROPERTY ANNUAL STATEMENT

| | | | |
|--|----|---|------|
| Schedule P – Part 2H – Section 1 – Other Liability – Occurrence | 58 | Schedule P – Part 4I – Special Property (Fire, Allied Lines, Inland Marine, Earthquake, Burglary and Theft) | 69 |
| Schedule P – Part 2H – Section 2 – Other Liability – Claims – Made | 58 | Schedule P – Part 4J – Auto Physical Damage | 69 |
| Schedule P – Part 2I – Special Property (Fire, Allied Lines, Inland Marine, Earthquake, Burglary, and Theft) | 59 | Schedule P – Part 4K – Fidelity/Surety | 69 |
| Schedule P – Part 2J – Auto Physical Damage | 59 | Schedule P – Part 4L – Other (Including Credit, Accident and Health) | 69 |
| Schedule P – Part 2K – Fidelity, Surety | 59 | Schedule P – Part 4M – International | 69 |
| Schedule P – Part 2L – Other (Including Credit, Accident and Health) | 59 | Schedule P – Part 4N – Reinsurance - Nonproportional Assumed Property | 70 |
| Schedule P – Part 2M – International | 59 | Schedule P – Part 4O – Reinsurance - Nonproportional Assumed Liability | 70 |
| Schedule P – Part 2N – Reinsurance - Nonproportional Assumed Property | 60 | Schedule P – Part 4P – Reinsurance - Nonproportional Assumed Financial Lines | 70 |
| Schedule P – Part 2O – Reinsurance - Nonproportional Assumed Liability | 60 | Schedule P – Part 4R – Section 1 – Products Liability – Occurrence | 71 |
| Schedule P – Part 2P – Reinsurance - Nonproportional Assumed Financial Lines | 60 | Schedule P – Part 4R – Section 2 – Products Liability – Claims-Made | 71 |
| Schedule P – Part 2R – Section 1 – Products Liability – Occurrence | 61 | Schedule P – Part 4S – Financial Guaranty/Mortgage Guaranty | 71 |
| Schedule P – Part 2R – Section 2 – Products Liability – Claims-Made | 61 | Schedule P – Part 4T – Warranty | 71 |
| Schedule P – Part 2S – Financial Guaranty/Mortgage Guaranty | 61 | Schedule P – Part 5A – Homeowners/Farmowners | 72 |
| Schedule P – Part 2T – Warranty | 61 | Schedule P – Part 5B – Private Passenger Auto Liability/Medical | 73 |
| Schedule P – Part 3A – Homeowners/Farmowners | 62 | Schedule P – Part 5C – Commercial Auto/Truck Liability/Medical | 74 |
| Schedule P – Part 3B – Private Passenger Auto Liability/Medical | 62 | Schedule P – Part 5D – Workers' Comp (Excluding Excess Workers' Comp) | 75 |
| Schedule P – Part 3C – Commercial Auto/Truck Liability/Medical | 62 | Schedule P – Part 5E – Commercial Multiple Peril | 76 |
| Schedule P – Part 3D – Workers' Comp (Excluding Excess Workers' Comp) | 62 | Schedule P – Part 5F – Medical Professional Liability – Claims-Made | 78 |
| Schedule P – Part 3E – Commercial Multiple Peril | 62 | Schedule P – Part 5F – Medical Professional Liability – Occurrence | 77 |
| Schedule P – Part 3F – Section 1 – Medical Professional Liability – Occurrence | 63 | Schedule P – Part 5H – Other Liability – Claims-Made | 80 |
| Schedule P – Part 3F – Section 2 – Medical Professional Liability – Claims-Made | 63 | Schedule P – Part 5H – Other Liability – Occurrence | 79 |
| Schedule P – Part 3G – Special Liability (Ocean Marine, Aircraft (All Perils), Boiler and Machinery) | 63 | Schedule P – Part 5R – Products Liability – Claims-Made | 82 |
| Schedule P – Part 3H – Section 1 – Other Liability – Occurrence | 63 | Schedule P – Part 5R – Products Liability – Occurrence | 81 |
| Schedule P – Part 3H – Section 2 – Other Liability – Claims-Made | 63 | Schedule P – Part 5T – Warranty | 83 |
| Schedule P – Part 3I – Special Property (Fire, Allied Lines, Inland Marine, Earthquake, Burglary, and Theft) | 63 | Schedule P – Part 6C – Commercial Auto/Truck Liability/Medical | 84 |
| Schedule P – Part 3J – Auto Physical Damage | 63 | Schedule P – Part 6D – Workers' Comp (Excluding Excess Workers' Comp) | 84 |
| Schedule P – Part 3K – Fidelity/Surety | 63 | Schedule P – Part 6E – Commercial Multiple Peril | 85 |
| Schedule P – Part 3L – Other (Including Credit, Accident and Health) | 63 | Schedule P – Part 6H – Other Liability – Claims-Made | 86 |
| Schedule P – Part 3M – International | 63 | Schedule P – Part 6H – Other Liability – Occurrence | 85 |
| Schedule P – Part 3N – Reinsurance - Nonproportional Assumed Property | 64 | Schedule P – Part 6M – International | 86 |
| Schedule P – Part 3O – Reinsurance - Nonproportional Assumed Liability | 64 | Schedule P – Part 6N – Reinsurance - Nonproportional Assumed Property | 87 |
| Schedule P – Part 3P – Reinsurance - Nonproportional Assumed Financial Lines | 64 | Schedule P – Part 6O – Reinsurance - Nonproportional Assumed Liability | 87 |
| Schedule P – Part 3R – Section 1 – Products Liability – Occurrence | 65 | Schedule P – Part 6R – Products Liability – Claims-Made | 88 |
| Schedule P – Part 3R – Section 2 – Products Liability – Claims-Made | 65 | Schedule P – Part 6R – Products Liability – Occurrence | 88 |
| Schedule P – Part 3S – Financial Guaranty/Mortgage Guaranty | 65 | Schedule P – Part 7A – Primary Loss Sensitive Contracts | 89 |
| Schedule P – Part 3T – Warranty | 65 | Schedule P – Part 7B – Reinsurance Loss Sensitive Contracts | 91 |
| Schedule P – Part 4A – Homeowners/Farmowners | 66 | Schedule P Interrogatories | 93 |
| Schedule P – Part 4B – Private Passenger Auto Liability/Medical | 66 | Schedule T – Exhibit of Premiums Written | 94 |
| Schedule P – Part 4C – Commercial Auto/Truck Liability/Medical | 66 | Schedule T – Part 2 – Interstate Compact | 95 |
| Schedule P – Part 4D – Workers' Comp (Excluding Excess Workers' Comp) | 66 | Schedule Y – Information Concerning Activities of Insurer Members of a Holding Company Group | 96 |
| Schedule P – Part 4E – Commercial Multiple Peril | 66 | Schedule Y - Part 1A - Detail of Insurance Holding Company System | 97 |
| Schedule P – Part 4F – Section 1 – Medical Professional Liability – Occurrence | 67 | Schedule Y – Part 2 – Summary of Insurer's Transactions With Any Affiliates | 98 |
| Schedule P – Part 4F – Section 2 – Medical Professional Liability – Claims-Made | 67 | Statement of Income | 4 |
| Schedule P – Part 4G – Special Liability (Ocean Marine, Aircraft (All Perils), Boiler and Machinery) | 67 | Summary Investment Schedule | SI01 |
| Schedule P – Part 4H – Section 1 – Other Liability – Occurrence | 67 | Supplemental Exhibits and Schedules Interrogatories | 99 |
| Schedule P – Part 4H – Section 2 – Other Liability – Claims-Made | 67 | Underwriting and Investment Exhibit Part 1 | 6 |
| | 68 | Underwriting and Investment Exhibit Part 1A | 7 |
| | 68 | Underwriting and Investment Exhibit Part 1B | 8 |
| | 68 | Underwriting and Investment Exhibit Part 2 | 9 |
| | 68 | Underwriting and Investment Exhibit Part 2A | 10 |
| | 68 | Underwriting and Investment Exhibit Part 3 | 11 |