

ANNUAL STATEMENT

OF THE

WAUSAU UNDERWRITERS INSURANCE COMPANY

of WAUSAU
STATE OF WISCONSIN

TO THE

Insurance Department

OF THE

FOR THE YEAR ENDED

December 31, 2022

PROPERTY AND CASUALTY

2022



ANNUAL STATEMENT

For the Year Ended December 31, 2022
OF THE CONDITION AND AFFAIRS OF THE

Wausau Underwriters Insurance Company

NAIC Group Code 0111, NAIC Company Code 26042, Employer's ID Number 39-1341459, Organized under the Laws of Wisconsin, State of Domicile or Port of Entry WI, Country of Domicile United States of America, Incorporated/Organized September 27, 1979, Commenced Business January 1, 1980, Statutory Home Office 2000 Westwood Drive, Wausau, WI, US 54401, Main Administrative Office 175 Berkeley Street, Boston, MA, US 02116, Mail Address 175 Berkeley Street, Boston, MA, US 02116, Primary Location of Books and Records 175 Berkeley Street, Boston, MA, US 02116, Internet Web Site Address www.LibertyMutualGroup.com, Statutory Statement Contact Matthew Sterling, Statutory.Compliance@LibertyMutual.com

OFFICERS

Chairman of the Board
Damon Paul Hart #

Table with 2 columns: Name, Title. Rows include Hamid Talal Mirza (President and Chief Executive Officer), Damon Paul Hart # (EVP, Chief Legal Officer and Secretary), Nikos Vasilakos # (Executive Vice President and Treasurer).

VICE-PRESIDENTS

Table with 4 columns: Name, Title, Name, Title. Rows include Vlad Yakov Barbalat (EVP and Chief Investment Officer), Paul Sanghera (Executive Vice President and Comptroller), Christopher Locke Peirce (EVP and Chief Financial Officer).

DIRECTORS OR TRUSTEES

Table with 4 columns: Name, Name, Name, Name. Rows include James Matthew Czapla, Damon Paul Hart #, Paul Sanghera, Matthew Paul Dolan, Hamid Talal Mirza, Alison Brooke Erbig, Elizabeth Julia Morahan, Michael Joseph Fallon, Edward Jose Pena #.

State of Massachusetts
County of Suffolk ss

The officers of this reporting entity being duly sworn, each depose and say that they are the described officers of said reporting entity, and that on the reporting period stated above, all of the herein described assets were the absolute property of the said reporting entity, free and clear from any liens or claims thereon, except as herein stated, and that this statement, together with related exhibits, schedules and explanations therein contained, annexed or referred to, is a full and true statement of all the assets and liabilities and of the condition and affairs of the said reporting entity as of the reporting period stated above, and of its income and deductions therefrom for the period ended, and have been completed in accordance with the NAIC Annual Statement Instructions and Accounting Practices and Procedures manual except to the extent that: (1) state law may differ; or, (2) that state rules or regulations require differences in reporting not related to accounting practices and procedures, according to the best of their information, knowledge and belief, respectively. Furthermore, the scope of this attestation by the described officers also includes the related corresponding electronic filing with the NAIC, when required, that is an exact copy (except for formatting differences due to electronic filing) of the enclosed statement. The electronic filing may be requested by various regulators in lieu of or in addition to the enclosed statement.

Signatures and titles of Hamid Talal Mirza (President and Chief Executive Officer), Damon Paul Hart # (EVP, Chief Legal Officer and Secretary), and Nikos Vasilakos # (Executive Vice President and Treasurer).

Subscribed and sworn to (or affirmed) before me this on this 17th day of January, 2023, by

Signature of Notary Public



a. Is this an original filing? [X] Yes [] No
b. If no: 1. State the amendment number
2. Date filed
3. Number of pages attached

ASSETS

	Current Year			Prior Year
	1	2	3	4
	Assets	Nonadmitted Assets	Net Admitted Assets (Cols. 1 - 2)	Net Admitted Assets
1. Bonds (Schedule D)	71,702,593		71,702,593	73,567,758
2. Stocks (Schedule D):				
2.1 Preferred stocks				
2.2 Common stocks				
3. Mortgage loans on real estate (Schedule B):				
3.1 First liens				
3.2 Other than first liens				
4. Real estate (Schedule A):				
4.1 Properties occupied by the company (less \$ 0 encumbrances)				
4.2 Properties held for the production of income (less \$ 0 encumbrances)				
4.3 Properties held for sale (less \$ 0 encumbrances)				
5. Cash (\$ 0, Schedule E - Part 1), cash equivalents (\$ 3,848,599, Schedule E - Part 2), and short-term investments (\$ 489,677, Schedule DA)	4,338,276		4,338,276	98,981
6. Contract loans (including \$ 0 premium notes)				
7. Derivatives (Schedule DB)				
8. Other invested assets (Schedule BA)				
9. Receivables for securities	1,200,000		1,200,000	
10. Securities lending reinvested collateral assets (Schedule DL)	4,588,083		4,588,083	1,183,040
11. Aggregate write-ins for invested assets				
12. Subtotals, cash and invested assets (Lines 1 to 11)	81,828,952		81,828,952	74,849,779
13. Title plants less \$ 0 charged off (for Title insurers only)				
14. Investment income due and accrued	431,829		431,829	401,830
15. Premiums and considerations:				
15.1 Uncollected premiums and agents' balances in the course of collection	(12,864)		(12,864)	581,436
15.2 Deferred premiums, agents' balances and installments booked but deferred and not yet due (including \$ 0 earned but unbilled premiums)				
15.3 Accrued retrospective premiums (\$ 0) and contracts subject to redetermination (\$ 0)				
16. Reinsurance:				
16.1 Amounts recoverable from reinsurers	25,647,174		25,647,174	11,791,592
16.2 Funds held by or deposited with reinsured companies	344,198		344,198	488,409
16.3 Other amounts receivable under reinsurance contracts				
17. Amounts receivable relating to uninsured plans				
18.1 Current federal and foreign income tax recoverable and interest thereon				
18.2 Net deferred tax asset				
19. Guaranty funds receivable or on deposit				
20. Electronic data processing equipment and software				
21. Furniture and equipment, including health care delivery assets (\$ 0)				
22. Net adjustment in assets and liabilities due to foreign exchange rates				
23. Receivables from parent, subsidiaries and affiliates	23,443,312		23,443,312	40,848,882
24. Health care (\$ 0) and other amounts receivable				
25. Aggregate write-ins for other-than-invested assets				
26. Total assets excluding Separate Accounts, Segregated Accounts and Protected Cell Accounts (Lines 12 to 25)	131,682,601		131,682,601	128,961,928
27. From Separate Accounts, Segregated Accounts and Protected Cell Accounts				
28. Total (Lines 26 and 27)	131,682,601		131,682,601	128,961,928

DETAILS OF WRITE-IN LINES				
1101.				
1102.				
1103.				
1198. Summary of remaining write-ins for Line 11 from overflow page				
1199. Totals (Lines 1101 through 1103 plus 1198) (Line 11 above)				
2501.				
2502.				
2503.				
2598. Summary of remaining write-ins for Line 25 from overflow page				
2599. Totals (Lines 2501 through 2503 plus 2598) (Line 25 above)				

LIABILITIES, SURPLUS AND OTHER FUNDS

	1	2
	Current Year	Prior Year
1. Losses (Part 2A, Line 35, Column 8)		
2. Reinsurance payable on paid losses and loss adjustment expenses (Schedule F, Part 1, Column 6)	287,641	6,708
3. Loss adjustment expenses (Part 2A, Line 35, Column 9)		
4. Commissions payable, contingent commissions and other similar charges		
5. Other expenses (excluding taxes, licenses and fees)		
6. Taxes, licenses and fees (excluding federal and foreign income taxes)		
7.1 Current federal and foreign income taxes (including \$ 0 on realized capital gains (losses))	120,287	148,881
7.2 Net deferred tax liability	48,000	36,000
8. Borrowed money \$ 0 and interest thereon \$ 0		
9. Unearned premiums (Part 1A, Line 38, Column 5) (after deducting unearned premiums for ceded reinsurance of \$ 167,000,716 and including warranty reserves of \$ 0 and accrued accident and health experience rating refunds including \$ 0 for medical loss ratio rebate per the Public Health Service Act)		
10. Advance premium		
11. Dividends declared and unpaid:		
11.1 Stockholders		
11.2 Policyholders		
12. Ceded reinsurance premiums payable (net of ceding commissions)	15,586,991	25,408,513
13. Funds held by company under reinsurance treaties (Schedule F, Part 3, Column 20)		
14. Amounts withheld or retained by company for account of others		
15. Remittances and items not allocated		
16. Provision for reinsurance (including \$ 0 certified) (Schedule F, Part 3 Column 78)		
17. Net adjustments in assets and liabilities due to foreign exchange rates		
18. Drafts outstanding		
19. Payable to parent, subsidiaries and affiliates	35,263,885	27,717,293
20. Derivatives		
21. Payable for securities		
22. Payable for securities lending	4,588,083	1,183,040
23. Liability for amounts held under uninsured plans		
24. Capital notes \$ 0 and interest thereon \$ 0		
25. Aggregate write-ins for liabilities	3	1
26. Total liabilities excluding protected cell liabilities (Lines 1 through 25)	55,894,890	54,500,436
27. Protected cell liabilities		
28. Total liabilities (Lines 26 and 27)	55,894,890	54,500,436
29. Aggregate write-ins for special surplus funds		
30. Common capital stock	4,500,000	4,500,000
31. Preferred capital stock		
32. Aggregate write-ins for other-than-special surplus funds		
33. Surplus notes		
34. Gross paid in and contributed surplus	51,102,304	51,102,304
35. Unassigned funds (surplus)	20,185,407	18,859,188
36. Less treasury stock, at cost:		
36.1 0 shares common (value included in Line 30 \$ 0)		
36.2 0 shares preferred (value included in Line 31 \$ 0)		
37. Surplus as regards policyholders (Lines 29 to 35, less 36) (Page 4, Line 39)	75,787,711	74,461,492
38. Totals (Page 2, Line 28, Col. 3)	131,682,601	128,961,928

DETAILS OF WRITE-IN LINES		
2501. Other Liabilities	3	1
2502.		
2503.		
2598. Summary of remaining write-ins for Line 25 from overflow page		
2599. Totals (Lines 2501 through 2503 plus 2598) (Line 25 above)	3	1
2901.		
2902.		
2903.		
2998. Summary of remaining write-ins for Line 29 from overflow page		
2999. Totals (Lines 2901 through 2903 plus 2998) (Line 29 above)		
3201.		
3202.		
3203.		
3298. Summary of remaining write-ins for Line 32 from overflow page		
3299. Totals (Lines 3201 through 3203 plus 3298) (Line 32 above)		

STATEMENT OF INCOME

	1	2
	Current Year	Prior Year
UNDERWRITING INCOME		
1. Premiums earned (Part 1, Line 35, Column 4)		
DEDUCTIONS:		
2. Losses incurred (Part 2, Line 35, Column 7)		
3. Loss adjustment expenses incurred (Part 3, Line 25, Column 1)		
4. Other underwriting expenses incurred (Part 3, Line 25, Column 2)		
5. Aggregate write-ins for underwriting deductions		
6. Total underwriting deductions (Lines 2 through 5)		
7. Net income of protected cells		
8. Net underwriting gain (loss) (Line 1 minus Line 6 plus Line 7)		
INVESTMENT INCOME		
9. Net investment income earned (Exhibit of Net Investment Income, Line 17)	1,480,413	1,626,066
10. Net realized capital gains (losses) less capital gains tax of \$ 18,580 (Exhibit of Capital Gains (Losses))	69,896	36,079
11. Net investment gain (loss) (Lines 9 + 10)	1,550,309	1,662,145
OTHER INCOME		
12. Net gain or (loss) from agents' or premium balances charged off (amount recovered \$ 0 amount charged off \$ 0)		
13. Finance and service charges not included in premiums		
14. Aggregate write-ins for miscellaneous income	(1,670)	(1,802)
15. Total other income (Lines 12 through 14)	(1,670)	(1,802)
16. Net income before dividends to policyholders, after capital gains tax and before all other federal and foreign income taxes (Lines 8 + 11 + 15)	1,548,639	1,660,343
17. Dividends to policyholders		
18. Net income, after dividends to policyholders, after capital gains tax and before all other federal and foreign income taxes (Line 16 minus Line 17)	1,548,639	1,660,343
19. Federal and foreign income taxes incurred	210,420	266,409
20. Net income (Line 18 minus Line 19) (to Line 22)	1,338,219	1,393,934
CAPITAL AND SURPLUS ACCOUNT		
21. Surplus as regards policyholders, December 31 prior year (Page 4, Line 39, Column 2)	74,461,492	73,084,558
22. Net income (from Line 20)	1,338,219	1,393,934
23. Net transfers (to) from Protected Cell accounts		
24. Change in net unrealized capital gains or (losses) less capital gains tax of \$ 0		
25. Change in net unrealized foreign exchange capital gain (loss)		
26. Change in net deferred income tax	(52,000)	(196,000)
27. Change in nonadmitted assets (Exhibit of Nonadmitted Assets, Line 28, Col. 3)	40,000	179,000
28. Change in provision for reinsurance (Page 3, Line 16, Column 2 minus Column 1)		
29. Change in surplus notes		
30. Surplus (contributed to) withdrawn from protected cells		
31. Cumulative effect of changes in accounting principles		
32. Capital changes:		
32.1 Paid in		
32.2 Transferred from surplus (Stock Dividend)		
32.3 Transferred to surplus		
33. Surplus adjustments:		
33.1 Paid in		
33.2 Transferred to capital (Stock Dividend)		
33.3 Transferred from capital		
34. Net remittances from or (to) Home Office		
35. Dividends to stockholders		
36. Change in treasury stock (Page 3, Lines 36.1 and 36.2, Column 2 minus Column 1)		
37. Aggregate write-ins for gains and losses in surplus		
38. Change in surplus as regards policyholders for the year (Lines 22 through 37)	1,326,219	1,376,934
39. Surplus as regards policyholders, December 31 current year (Lines 21 plus Line 38) (Page 3, Line 37)	75,787,711	74,461,492

DETAILS OF WRITE-IN LINES		
0501.		
0502.		
0503.		
0598. Summary of remaining write-ins for Line 05 from overflow page		
0599. Totals (Lines 0501 through 0503 plus 0598) (Line 05 above)		
1401. Other income/(expense)	(1,670)	(1,802)
1402.		
1403.		
1498. Summary of remaining write-ins for Line 14 from overflow page		
1499. Totals (Lines 1401 through 1403 plus 1498) (Line 14 above)	(1,670)	(1,802)
3701.		
3702.		
3703.		
3798. Summary of remaining write-ins for Line 37 from overflow page		
3799. Totals (Lines 3701 through 3703 plus 3798) (Line 37 above)		

CASH FLOW

	1	2
Cash from Operations	Current Year	Prior Year
1. Premiums collected net of reinsurance	(9,227,222)	(4,382,613)
2. Net investment income	1,569,395	1,671,346
3. Miscellaneous income	142,541	(490,211)
4. Total (Lines 1 through 3)	(7,515,286)	(3,201,478)
5. Benefit and loss related payments	13,574,648	(10,320,884)
6. Net transfers to Separate Accounts, Segregated Accounts and Protected Cell Accounts		
7. Commissions, expenses paid and aggregate write-ins for deductions		
8. Dividends paid to policyholders		
9. Federal and foreign income taxes paid (recovered) net of \$ 0 tax on capital gains (losses)	257,594	422,018
10. Total (Lines 5 through 9)	13,832,242	(9,898,866)
11. Net cash from operations (Line 4 minus Line 10)	(21,347,528)	6,697,388
Cash from Investments		
12. Proceeds from investments sold, matured or repaid:		
12.1 Bonds	13,534,143	15,064,181
12.2 Stocks		
12.3 Mortgage loans		
12.4 Real estate		
12.5 Other invested assets	1,183,040	1,304,985
12.6 Net gains or (losses) on cash, cash equivalents and short-term investments		
12.7 Miscellaneous proceeds	(1,200,000)	
12.8 Total investment proceeds (Lines 12.1 to 12.7)	13,517,183	16,369,166
13. Cost of investments acquired (long-term only):		
13.1 Bonds	11,699,482	16,485,578
13.2 Stocks		
13.3 Mortgage loans		
13.4 Real estate		
13.5 Other invested assets	4,588,083	1,183,040
13.6 Miscellaneous applications		
13.7 Total investments acquired (Lines 13.1 to 13.6)	16,287,565	17,668,618
14. Net increase (decrease) in contract loans and premium notes		
15. Net cash from investments (Line 12.8 minus Line 13.7 minus Line 14)	(2,770,382)	(1,299,452)
Cash from Financing and Miscellaneous Sources		
16. Cash provided (applied):		
16.1 Surplus notes, capital notes		
16.2 Capital and paid in surplus, less treasury stock		
16.3 Borrowed funds		
16.4 Net deposits on deposit-type contracts and other insurance liabilities		
16.5 Dividends to stockholders		
16.6 Other cash provided (applied)	28,357,205	(5,485,092)
17. Net cash from financing and miscellaneous sources (Lines 16.1 to 16.4 minus Line 16.5 plus Line 16.6)	28,357,205	(5,485,092)
RECONCILIATION OF CASH, CASH EQUIVALENTS AND SHORT-TERM INVESTMENTS		
18. Net change in cash, cash equivalents and short-term investments (Line 11, plus Lines 15 and 17)	4,239,295	(87,156)
19. Cash, cash equivalents and short-term investments:		
19.1 Beginning of year	98,981	186,137
19.2 End of year (Line 18 plus Line 19.1)	4,338,276	98,981

Note: Supplemental disclosures of cash flow information for non-cash transactions:

20.0001	2 - Net Investment Income	957	
20.0002	13.1 - Cost of investments acquired - Bonds	957	
20.0003			

NONE Underwriting and Investment Exhibit - Part 1

NONE Underwriting and Investment Exhibit - Part 1A

UNDERWRITING AND INVESTMENT EXHIBIT PART 1B – PREMIUMS WRITTEN

Line of Business	1	Reinsurance Assumed		Reinsurance Ceded		6 Net Premiums Written Cols. 1 + 2 + 3 - 4 - 5
	Direct Business (a)	2 From Affiliates	3 From Non- Affiliates	4 To Affiliates	5 To Non- Affiliates	
1. Fire			3		3	
2.1 Allied lines			1		1	
2.2 Multiple peril crop						
2.3 Federal Flood						
2.4 Private Crop						
2.5 Private flood						
3. Farmowners multiple peril						
4. Homeowners multiple peril	4,693,334				4,693,334	
5.1 Commercial multiple peril (non-liability portion)						
5.2 Commercial multiple peril (liability portion)						
6. Mortgage guaranty						
8. Ocean marine						
9. Inland marine	119,567				119,567	
10. Financial guaranty						
11.1 Medical professional liability—occurrence						
11.2 Medical professional liability—claims-made						
12. Earthquake	867				867	
13.1 Comprehensive (hospital and medical) individual						
13.2 Comprehensive (hospital and medical)group						
14. Credit accident and health (group and individual)						
15.1 Vision Only						
15.2 Dental Only						
15.3 Disability Income						
15.4 Medical supplement						
15.5 Medicaid Title XIX						
15.6 Medicaid Title XVIII						
15.7 Long-Term Care						
15.8 Federal employees health benefits plan						
15.9 Other health						
16. Workers compensation	92,268		14,545		106,813	
17.1 Other liability—occurrence	(8,579)				(8,579)	
17.2 Other liability—claims-made						
17.3 Excess workers' compensation						
18.1 Products liability—occurrence						
18.2 Products liability—claims-made						
19.1 Private passenger auto no-fault (personal injury protection)	58,722,904				58,722,904	
19.2 Other private passenger auto liability	149,400,336				149,400,336	
19.3 Commercial auto no-fault (personal injury protection)						
19.4 Other commercial auto liability	(1,403)				(1,403)	
21.1 Private passenger auto physical damage	114,489,164				114,489,164	
21.2 Commercial auto physical damage						
22. Aircraft (all perils)						
23. Fidelity						
24. Surety						
26. Burglary and theft						
27. Boiler and machinery						
28. Credit						
29. International						
30. Warranty						
31. Reinsurance-nonproportional assumed property	X X X					
32. Reinsurance-nonproportional assumed liability	X X X					
33. Reinsurance-nonproportional assumed financial lines	X X X					
34. Aggregate write-ins for other lines of business						
35. TOTALS	327,508,458		14,549		327,523,007	
DETAILS OF WRITE-IN LINES						
3401.						
3402.						
3403.						
3498. Sum of remaining write-ins for Line 34 from overflow page						
3499. Totals (Lines 3401 through 3403 plus 3498 (Line 34 above))						

(a) Does the company's direct premiums written include premiums recorded on an installment basis? Yes No
 If yes: 1. The amount of such installment premiums \$ 8,130
 2. Amount at which such installment premiums would have been reported had they been recorded on an annualized basis \$ 8,130

UNDERWRITING AND INVESTMENT EXHIBIT PART 2 – LOSSES PAID AND INCURRED

Line of Business	Losses Paid Less Salvage				5 Net Losses Unpaid Current Year (Part 2A, Col. 8)	6 Net Losses Unpaid Prior Year	7 Losses Incurred Current Year (Cols. 4 + 5 - 6)	8 Percentage of Losses Incurred (Col. 7, Part 2) to Premiums Earned (Col. 4, Part 1)
	1 Direct Business	2 Reinsurance Assumed	3 Reinsurance Recovered	4 Net Payments (Cols. 1 + 2 - 3)				
1. Fire		2	2					
2.1 Allied lines		1	1					
2.2 Multiple peril crop								
2.3 Federal flood								
2.4 Private crop								
2.5 Private flood								
3. Farmowners multiple peril								
4. Homeowners multiple peril	1,170,198		1,170,198					
5.1 Commercial multiple peril (non-liability portion)	(5,465)		(5,465)					
5.2 Commercial multiple peril (liability portion)	1,955,976		1,955,976					
6. Mortgage guaranty								
8. Ocean marine								
9. Inland marine	93,693		93,693					
10. Financial guaranty								
11.1 Medical professional liability—occurrence								
11.2 Medical professional liability—claims-made								
12. Earthquake								
13.1 Comprehensive (hospital and medical)individual								
13.2 Comprehensive (hospital and medical)group								
14. Credit accident and health (group and individual)								
15.1 Vision only								
15.2 Dental only								
15.3 Disability income								
15.4 Medicare supplement								
15.5 Medicaid Title XIX								
15.6 Medicaid Title XIXVIII								
15.7 Long Term care								
15.8 Federal Employees health benefits plan								
15.9 Other health								
16. Workers' compensation	20,111,304	471,879	20,583,183					

UNDERWRITING AND INVESTMENT EXHIBIT PART 2 – LOSSES PAID AND INCURRED

Line of Business	Losses Paid Less Salvage				5 Net Losses Unpaid Current Year (Part 2A, Col. 8)	6 Net Losses Unpaid Prior Year	7 Losses Incurred Current Year (Cols. 4 + 5 - 6)	8 Percentage of Losses Incurred (Col. 7, Part 2) to Premiums Earned (Col. 4, Part 1)
	1 Direct Business	2 Reinsurance Assumed	3 Reinsurance Recovered	4 Net Payments (Cols. 1 + 2 - 3)				
17.1 Other liability—occurrence	628,737		628,737					
17.2 Other liability—claims-made								
17.3 Excess workers' compensation								
18.1 Products liability—occurrence	2,298,595		2,298,595					
18.2 Products liability—claims-made								
19.1 Private passenger auto no-fault(personal injury protection)	52,081,119		52,081,119					
19.2 Other private passenger liability	130,461,172		130,461,172					
19.3 Commercial auto no-fault (personal injury protection)	21,781		21,781					
19.4 Other commercial auto liability	701,025	(6)	701,019					
21.1 Private passenger auto physical damage	88,467,956		88,467,956					
21.2 Commercial auto physical damage	(9,032)		(9,032)					
22. Aircraft (all perils)								
23. Fidelity								
24. Surety								
26. Burglary and theft								
27. Boiler and machinery								
28. Credit								
29. International								
30. Warranty								
31. Reinsurance-nonproportional assumed property	X X X							
32. Reinsurance-nonproportional assumed liability	X X X							
33. Reinsurance-nonproportional assumed financial lines	X X X							
34. Aggregate write-ins for other lines of business								
35. TOTALS	297,977,059	471,876	298,448,935					
DETAILS OF WRITE-IN LINES								
3401.								
3402.								
3403.								
3498. Sum of remaining write-ins for Line 34 from overflow page								
3499. Totals (Lines 3401 through 3403 plus 3498) (Line 34 above)								

UNDERWRITING AND INVESTMENT EXHIBIT

PART 2A – UNPAID LOSSES AND LOSS ADJUSTMENT EXPENSES

Line of Business	Reported Losses				Incurred But Not Reported			8 Net Losses Unpaid (Cols. 4 + 5 + 6 - 7)	9 Net Unpaid Loss Adjustment Expenses
	1 Direct	2 Reinsurance Assumed	3 Deduct Reinsurance Recoverable	4 Net Losses Excl. Incurred But Not Reported (Cols. 1 + 2 - 3)	5 Direct	6 Reinsurance Assumed	7 Reinsurance Ceded		
1. Fire					42,277		42,277		
2.1 Allied lines					11,618		11,618		
2.2 Multiple peril crop									
2.3 Federal flood									
2.4 Private crop									
2.5 Private flood									
3. Farmowners multiple peril									
4. Homeowners multiple peril	222,486		222,486		449,956		449,956		
5.1 Commercial multiple peril (non-liability portion)	8,305		8,305		(156,842)		(156,842)		
5.2 Commercial multiple peril (liability portion)	3,555,576		3,555,576		7,988,003		7,988,003		
6. Mortgage guaranty									
8. Ocean marine									
9. Inland marine					15,085		15,085		
10. Financial guaranty									
11.1 Medical professional liability—occurrence									
11.2 Medical professional liability—claims-made									
12. Earthquake					33		33		
13.1 Comprehensive (hospital and medical)individual								(a)	
13.2 Comprehensive (hospital and medical)group								(a)	
14. Credit accident and health (group and individual)									
15.1 Vision only								(a)	
15.2 Dental only								(a)	
15.3 Disability income								(a)	
15.4 Medicare supplement								(a)	
15.5 Medicaid Title XIX								(a)	
15.6 Medicaid Title XIVIII								(a)	
15.7 Long Term care								(a)	
15.8 Federal Employees health benefits plan								(a)	
15.9 Other health								(a)	
16. Workers' compensation	192,993,686	8,679,532	201,673,218		248,034,920	3,267,153	251,302,073		

UNDERWRITING AND INVESTMENT EXHIBIT

PART 2A – UNPAID LOSSES AND LOSS ADJUSTMENT EXPENSES

Line of Business	Reported Losses				Incurred But Not Reported			8 Net Losses Unpaid (Cols. 4 + 5 + 6 - 7)	9 Net Unpaid Loss Adjustment Expenses
	1 Direct	2 Reinsurance Assumed	3 Deduct Reinsurance Recoverable	4 Net Losses Excl. Incurred But Not Reported (Cols. 1 + 2 - 3)	5 Direct	6 Reinsurance Assumed	7 Reinsurance Ceded		
17.1 Other liability—occurrence	2,020,922		2,020,922		6,403,745		6,403,745		
17.2 Other liability—claims-made									
17.3 Excess workers' compensation									
18.1 Products liability—occurrence	4,050,127		4,050,127		2,937,571		2,937,571		
18.2 Products liability—claims-made									
19.1 Private passenger auto no-fault(personal injury protection)	27,725,025		27,725,025		19,786,435		19,786,435		
19.2 Other private passenger liability	108,317,124		108,317,124		157,661,697		157,661,697		
19.3 Commercial auto no-fault (personal injury protection)	586,619		586,619		37,447		37,447		
19.4 Other commercial auto liability	891,733	8	891,741		1,764,068		1,764,068		
21.1 Private passenger auto physical damage					4,493,016		4,493,016		
21.2 Commercial auto physical damage					(87,404)		(87,404)		
22. Aircraft (all perils)									
23. Fidelity					(51,962)		(51,962)		
24. Surety					(56)		(56)		
26. Burglary and theft									
27. Boiler and machinery									
28. Credit									
29. International									
30. Warranty									
31. Reinsurance-nonproportional assumed property	X X X				X X X				
32. Reinsurance-nonproportional assumed liability	X X X				X X X				
33. Reinsurance-nonproportional assumed financial lines	X X X				X X X				
34. Aggregate write-ins for other lines of business									
35. TOTALS	340,371,603	8,679,540	349,051,143		449,329,607	3,267,153	452,596,760		
DETAILS OF WRITE-IN LINES									
3401.									
3402.									
3403.									
3498. Sum of remaining write-ins for Line 34 from overflow page									
3499. Totals (Lines 3401 through 3403 plus 3498) (Line 34 above)									

(a) Including \$ 0 for present value of life indemnity claims reported in Lines 13 and 15.

UNDERWRITING AND INVESTMENT EXHIBIT

PART 3 - EXPENSES

	1	2	3	4
	Loss Adjustment Expenses	Other Underwriting Expenses	Investment Expenses	Total
1. Claim adjustment services:				
1.1 Direct	16,961,754			16,961,754
1.2 Reinsurance assumed				
1.3 Reinsurance ceded	16,961,754			16,961,754
1.4 Net claim adjustment services (1.1 + 1.2 - 1.3)				
2. Commission and brokerage:				
2.1 Direct, excluding contingent		12,947,478		12,947,478
2.2 Reinsurance assumed, excluding contingent		(102,712)		(102,712)
2.3 Reinsurance ceded, excluding contingent		12,844,766		12,844,766
2.4 Contingent—direct		(8,465)		(8,465)
2.5 Contingent—reinsurance assumed				
2.6 Contingent—reinsurance ceded		(8,465)		(8,465)
2.7 Policy and membership fees				
2.8 Net commission and brokerage (2.1 + 2.2 - 2.3 + 2.4 + 2.5 - 2.6 + 2.7)				
3. Allowances to manager and agents				
4. Advertising			296	296
5. Boards, bureaus and associations			138	138
6. Surveys and underwriting reports			270	270
7. Audit of assureds' records				
8. Salary and related items:				
8.1 Salaries			48,432	48,432
8.2 Payroll taxes			10,391	10,391
9. Employee relations and welfare			24,562	24,562
10. Insurance			1,678	1,678
11. Directors' fees			13	13
12. Travel and travel items			1,124	1,124
13. Rent and rent items			16,153	16,153
14. Equipment			6,171	6,171
15. Cost or depreciation of EDP equipment and software			5,325	5,325
16. Printing and stationery			151	151
17. Postage, telephone and telegraph, exchange and express			2,061	2,061
18. Legal and auditing			1,006	1,006
19. Totals (Lines 3 to 18)			117,771	117,771
20. Taxes, licenses and fees:				
20.1 State and local insurance taxes deducting guaranty association credits of \$ 0				
20.2 Insurance department licenses and fees				
20.3 Gross guaranty association assessments				
20.4 All other (excluding federal and foreign income and real estate)				
20.5 Total taxes, licenses and fees (20.1 + 20.2 + 20.3 + 20.4)				
21. Real estate expenses				
22. Real estate taxes				
23. Reimbursements by uninsured plans				
24. Aggregate write-ins for miscellaneous expenses			21,319	21,319
25. Total expenses incurred			139,090	(a) 139,090
26. Less unpaid expenses—current year				
27. Add unpaid expenses—prior year				
28. Amounts receivable relating to uninsured plans, prior year				
29. Amounts receivable relating to uninsured plans, current year				
30. TOTAL EXPENSES PAID (Lines 25 - 26 + 27 - 28 + 29)			139,090	139,090

DETAILS OF WRITE-IN LINES				
2401. Other expenses			21,319	21,319
2402.				
2403.				
2498. Sum of remaining write-ins for Line 24 from overflow page				
2499. Totals (Lines 2401 through 2403 plus 2498) (Line 24 above)			21,319	21,319

(a) Includes management fees of \$ 139,092 to affiliates and \$ 0 to non-affiliates.

EXHIBIT OF NET INVESTMENT INCOME

	1 Collected During Year	2 Earned During Year
1. U.S. Government bonds	(a) 774,582	814,785
1.1 Bonds exempt from U.S. tax	(a) 306,134	311,321
1.2 Other bonds (unaffiliated)	(a) 609,599	594,207
1.3 Bonds of affiliates	(a)	
2.1 Preferred stocks (unaffiliated)	(b)	
2.11 Preferred stocks of affiliates	(b)	
2.2 Common stocks (unaffiliated)		
2.21 Common stocks of affiliates		
3. Mortgage loans	(c)	
4. Real estate	(d)	
5. Contract loans		
6. Cash, cash equivalents and short-term investments	(e) 92,734	92,734
7. Derivative instruments	(f)	
8. Other invested assets		
9. Aggregate write-ins for investment income	(193,542)	(193,542)
10. Total gross investment income	1,589,507	1,619,505
11. Investment expenses		(g) 139,092
12. Investment taxes, licenses and fees, excluding federal income taxes		(g)
13. Interest expense		(h)
14. Depreciation on real estate and other invested assets		(i)
15. Aggregate write-ins for deductions from investment income		
16. Total deductions (Lines 11 through 15)		139,092
17. Net investment income (Line 10 minus Line 16)		1,480,413

DETAILS OF WRITE-IN LINES		
0901. Miscellaneous Income/(Expense)	(193,542)	(193,542)
0902.		
0903.		
0998. Summary of remaining write-ins for Line 09 from overflow page		
0999. Totals (Lines 0901 through 0903 plus 0998) (Line 09 above)	(193,542)	(193,542)
1501.		
1502.		
1503.		
1598. Summary of remaining write-ins for Line 15 from overflow page		
1599. Totals (Lines 1501 through 1503 plus 1598) (Line 15 above)		

- (a) Includes \$ 91,136 accrual of discount less \$ 211,073 amortization of premium and less \$ 72,299 paid for accrued interest on purchases.
- (b) Includes \$ 0 accrual of discount less \$ 0 amortization of premium and less \$ 0 paid for accrued dividends on purchases.
- (c) Includes \$ 0 accrual of discount less \$ 0 amortization of premium and less \$ 0 paid for accrued interest on purchases.
- (d) Includes \$ 0 for company's occupancy of its own buildings; and excludes \$ 0 interest on encumbrances.
- (e) Includes \$ 751 accrual of discount less \$ 0 amortization of premium and less \$ 0 paid for accrued interest on purchases.
- (f) Includes \$ 0 accrual of discount less \$ 0 amortization of premium.
- (g) Includes \$ 139,092 investment expenses and \$ 0 investment taxes, licenses and fees, excluding federal income taxes, attributable to segregated and Separate Accounts.
- (h) Includes \$ 0 interest on surplus notes and \$ 0 interest on capital notes.
- (i) Includes \$ 0 depreciation on real estate and \$ 0 depreciation on other invested assets.

EXHIBIT OF CAPITAL GAINS (LOSSES)

	1 Realized Gain (Loss) on Sales or Maturity	2 Other Realized Adjustments	3 Total Realized Capital Gain (Loss) (Columns 1 + 2)	4 Change in Unrealized Capital Gain (Loss)	5 Change in Unrealized Foreign Exchange Capital Gain (Loss)
1. U.S. Government bonds					
1.1 Bonds exempt from U.S. tax	58,973		58,973		
1.2 Other bonds (unaffiliated)	29,503		29,503		
1.3 Bonds of affiliates					
2.1 Preferred stocks (unaffiliated)					
2.11 Preferred stocks of affiliates					
2.2 Common stocks (unaffiliated)					
2.21 Common stocks of affiliates					
3. Mortgage loans					
4. Real estate					
5. Contract loans					
6. Cash, cash equivalents and short-term investments					(489,677)
7. Derivative instruments					
8. Other invested assets					
9. Aggregate write-ins for capital gains (losses)					
10. Total capital gains (losses)	88,476		88,476		(489,677)

DETAILS OF WRITE-IN LINES					
0901.					
0902.					
0903.					
0998. Summary of remaining write-ins for Line 09 from overflow page					
0999. Totals (Lines 0901 through 0903 plus 0998) (Line 09 above)					

EXHIBIT OF NONADMITTED ASSETS

	1 Current Year Total Nonadmitted Assets	2 Prior Year Total Nonadmitted Assets	3 Change in Total Nonadmitted Assets (Col. 2 - Col. 1)
1. Bonds (Schedule D)			
2. Stocks (Schedule D):			
2.1 Preferred stocks			
2.2 Common stocks			
3. Mortgage loans on real estate (Schedule B):			
3.1 First liens			
3.2 Other than first liens			
4. Real estate (Schedule A):			
4.1 Properties occupied by the company			
4.2 Properties held for the production of income			
4.3 Properties held for sale			
5. Cash (Schedule E - Part 1), cash equivalents (Schedule E - Part 2) and short-term investments (Schedule DA)			
6. Contract loans			
7. Derivatives (Schedule DB)			
8. Other invested assets (Schedule BA)			
9. Receivables for securities			
10. Securities lending reinvested collateral assets (Schedule DL)			
11. Aggregate write-ins for invested assets			
12. Subtotals, cash and invested assets (Lines 1 to 11)			
13. Title plants (for Title insurers only)			
14. Investment income due and accrued			
15. Premiums and considerations:			
15.1 Uncollected premiums and agents' balances in the course of collection			
15.2 Deferred premiums, agents' balances and installments booked but deferred and not yet due			
15.3 Accrued retrospective premiums and contracts subject to redetermination			
16. Reinsurance:			
16.1 Amounts recoverable from reinsurers			
16.2 Funds held by or deposited with reinsured companies			
16.3 Other amounts receivable under reinsurance contracts			
17. Amounts receivable relating to uninsured plans			
18.1 Current federal and foreign income tax recoverable and interest thereon			
18.2 Net deferred tax asset		40,000	40,000
19. Guaranty funds receivable or on deposit			
20. Electronic data processing equipment and software			
21. Furniture and equipment, including health care delivery assets			
22. Net adjustment in assets and liabilities due to foreign exchange rates			
23. Receivables from parent, subsidiaries and affiliates			
24. Health care and other amounts receivable			
25. Aggregate write-ins for other-than-invested assets			
26. Total assets excluding Separate Accounts, Segregated Accounts and Protected Cell Accounts (Lines 12 to 25)		40,000	40,000
27. From Separate Accounts, Segregated Accounts and Protected Cell Accounts			
28. Total (Lines 26 and 27)		40,000	40,000

DETAILS OF WRITE-IN LINES			
1101.			
1102.			
1103.			
1198. Summary of remaining write-ins for Line 11 from overflow page			
1199. Totals (Lines 1101 through 1103 plus 1198) (Line 11 above)			
2501.			
2502.			
2503.			
2598. Summary of remaining write-ins for Line 25 from overflow page			
2599. Totals (Lines 2501 through 2503 plus 2598) (Line 25 above)			

NOTES TO FINANCIAL STATEMENTS

1. Summary of Significant Accounting Policies and Going Concern

A. Accounting Practices

Effective January 1, 2001, and subject to any deviations prescribed or permitted by the State of Wisconsin, the accompanying financial statements of Wausau Underwriters Insurance Company (the "Company") have been prepared in conformity with the National Association of Insurance Commissioners ("NAIC") Accounting Practices and Procedures Manual ("APP Manual").

The Company does not have any prescribed or permitted accounting practices.

NET INCOME	SSAP #	F/S Page	F/S Line #	2022	2021
(1) Wausau Underwriters Insurance Company state basis (Page 4, Line 20,	X X X	X X X	X X X	1,338,219	1,393,934

(2) State Prescribed Practices that are an increase/(decrease) from NAIC SAP:

Details of Depreciation of Fixed Assets	SSAP #	F/S Page	F/S Line #	2022	2021
.....					
Totals (Lines 01A0201 through 01A0225)	X X X	X X X	X X X	0	0

(3) State Permitted Practices that are an increase/(decrease) from NAIC SAP:

Details of Depreciation of Home Office Property	SSAP #	F/S Page	F/S Line #	2022	2021
.....					
Totals (Lines 01A0301 through 01A0325)	X X X	X X X	X X X	0	0

(4) NAIC SAP (1 - 2 - 3 = 4)	X X X	X X X	X X X	1,338,219	1,393,934
------------------------------	-------	-------	-------	-----------	-----------

SURPLUS

Wausau Underwriters Insurance Company state basis (Page 3, Line 37,	SSAP #	F/S Page	F/S Line #	2022	2021
(5)	X X X	X X X	X X X	75,787,711	74,461,492

(6) State Prescribed Practices that are an increase/(decrease) from NAIC SAP:

e.g., Goodwill, net, Fixed Assets, Net	SSAP #	F/S Page	F/S Line #	2022	2021
.....					
Totals (Lines 01A0601 through 01A0625)	X X X	X X X	X X X	0	0

(7) State Permitted Practices that are an increase/(decrease) from NAIC SAP:

Home Office Property	SSAP #	F/S Page	F/S Line #	2022	2021
.....					
Totals (Lines 01A0701 through 01A0725)	X X X	X X X	X X X	0	0

(8) NAIC SAP (5 - 6 - 7 = 8)	X X X	X X X	X X X	75,787,711	74,461,492
------------------------------	-------	-------	-------	------------	------------

B. Use of Estimates in the Preparation of the Financial Statements

The preparation of financial statements requires management to make estimates and assumptions that affect the reported amounts of assets, liabilities, revenues, and expenses. It also requires estimates in the disclosure of contingent assets and liabilities. Actual results could differ from these estimates.

C. Accounting Policy

NOTES TO FINANCIAL STATEMENTS

Premiums are earned over the terms of the related policies and reinsurance contracts. Unearned premium reserves are established to cover the unexpired portion of premiums written. Such reserves are computed by pro-rata methods. Expenses incurred in connection with acquiring new insurance business, including acquisition costs such as sales commissions, are charged to operations as incurred. Expenses incurred are reduced for ceding allowances received or receivable.

In addition, the Company applies the following accounting policies, where applicable:

1. Short term investments are carried at cost, adjusted where appropriate for amortization of premium or discount, or fair value as specified by the Purposes and Procedures Manual of the NAIC Investment Analysis Office (SVO Manual).
2. Bonds are carried at cost, adjusted where appropriate for amortization of premium or discount, or fair value as specified by the SVO Manual.
3. Common stocks are carried at fair value, except that investments in stocks of subsidiaries, controlled and affiliated ("SCA") companies are carried according to Note 1C(7).
4. Preferred stocks are carried at cost or fair value as specified by the SVO Manual. Preferred stocks of SCA companies are carried according to Note 1C(7).
5. Mortgage loans are carried at amortized cost, less impairments as specified by the SVO Manual.
6. Mortgage backed/asset backed securities are carried at amortized cost or fair value based on guidance in the SVO Manual. Prepayment assumptions for mortgage backed/asset backed securities are based on market expectations. The retrospective adjustment method and prospective interest method are used to value all mortgage backed/asset backed securities
7. Investments in SCA companies are carried in accordance with SSAP No. 97, Investments in Subsidiary, Controlled, and Affiliated Entities, A Replacement of SSAP No. 88, and the SVO Manual.
8. Investments in joint ventures, partnerships, and limited liability companies are carried in accordance with SSAP No. 48, Joint Ventures, Partnerships and Limited Liability Companies, and the SVO Manual.
9. Derivative Securities, refer to Note 8 .
10. Investment income is anticipated as a factor in the premium deficiency calculation, in accordance with SSAP No. 53, Property Casualty Contracts - Premiums. Refer to Note 30.
11. Unpaid losses and loss adjustment expenses include an amount determined from individual case estimates and an amount, based on past experience, for losses and loss adjustment expenses incurred but not reported. Such liabilities are necessarily based on assumptions and estimates, and while management believes the amount is adequate, the ultimate liability may be in excess of or less than the amount provided. The methods, for making such estimates and for establishing the resulting liability, are continually reviewed and follow current standards of practice. Any adjustments to the liability are reflected in the period that they are determined.
12. The Company did not change its capitalization policy from the prior period.
13. The Company has no pharmaceutical rebate receivables.

D. Going Concern

The Company is not aware of any conditions that would impact its ability to continue as a going concern.

2. Accounting Changes and Corrections of Errors

There were no material changes in accounting principles and/or correction of errors.

3. Business Combinations and Goodwill

A. Statutory Purchase Method

The Company did not enter into any statutory purchases during the year.

The transaction was accounted for as a statutory purchase and reflects the following:

1 Purchased entity	2 Acquisition date	3 Cost of acquired entity	4 Original amount of goodwill	5 Original amount of admitted goodwill

1 Purchased entity	6 Admitted goodwill as of the reporting date	7 Amount of goodwill amortized during the reporting period	8 Book Value of SCA	9 Admitted goodwill as a of SCA BACV, gross of admitted goodwill Col. 6/Col. 8

B. Statutory Merger

The Company did not enter into any statutory mergers during the year.

C. Impairment Loss

The Company did not recognize an impairment loss during the period.

D. Subcomponents and Calculation of Adjusted Surplus and Total Admitted Goodwill

NOTES TO FINANCIAL STATEMENTS

	Calculation of Limited Using Prior Quarter Numbers	Current Reporting Period
(1) Capital & Surplus	74,929,654	X X X
Less:		
(2) Admitted Positive Goodwill	0	X X X
(3) Admitted EDP Equipment & Operating System Software	0	X X X
(4) Admitted Net Deferred Taxes	0	X X X
(5) Adjusted Capital and Surplus (Line 1-2-3-4)	74,929,654	X X X
(6) Limitation on amount of goodwill (adjusted capital and surplus times 10% goodwill limitation [Line	7,492,965	X X X
(7) Current period reported Admitted Goodwill	X X X	0
(8) Current Period Admitted Goodwill as a % of prior period Adjusted Capital and Surplus (Line 7/Line	X X X	0.000

4. Discontinued Operations

The Company has no discontinued operations

A. Discontinued Operations Disposed of or Classified as Held for Sale

Not Applicable

B. Change in Plan of Sale of Discontinued Operation

Not Applicable

C. Nature of Any Significant Continuing Involvement with Discontinued Operations After Disposal

Not Applicable

D. Equity Interest Retained in the Discontinued Operation After Disposal

Not Applicable

5. Investments

A. Mortgage Loans, including Mezzanine Real Estate Loans

(1) Not applicable

(2) Not applicable

(3) Taxes, assessments and any amounts advanced and not included in the mortgage loan total:

Current Year	Prior Year
0	0

(4) Age Analysis of Mortgage Loans and Identification of Mortgage Loans in Which the Insurer is a Participant or Co-lender in a Mortgage Loan Agreement:

	Farm	Residential		Commercial		Mezzanine	Total
		Insured	All Other	Insured	All Other		
a. Current Year							
1. Recorded Investment (All)							
(a) Current Year	0	0	0	0	0	0	0
(b) 30 - 59 Days Past Due	0	0	0	0	0	0	0
(c) 60 - 89 Days Past Due	0	0	0	0	0	0	0
(d) 90 - 179 Days Past Due	0	0	0	0	0	0	0
(e) 180 + Days Past Due	0	0	0	0	0	0	0
2. Accruing Interest 90 - 179 Days Past Due							
(a) Recorded Investment	0	0	0	0	0	0	0
(b) Interest Accrued	0	0	0	0	0	0	0
3. Accruing Interest 180 + Days Past Due							
(a) Recorded Investment	0	0	0	0	0	0	0
(b) Interest Accrued	0	0	0	0	0	0	0
4. Interest Reduced							
(a) Recorded Investment	0	0	0	0	0	0	0
(b) Number of Loans	0	0	0	0	0	0	0
(c) Percent Reduced	0.000%	0.000%	0.000%	0.000%	0.000%	0.000%	0.000%
5. Participant or Co-lender in a Mortgage Loan Agreement							
(a) Recorded Investment	0	0	0	0	0	0	0
b. Prior Year							
1. Recorded Investment							
(a) Current Year	0	0	0	0	0	0	0
(b) 30 - 59 Days Past Due	0	0	0	0	0	0	0
(c) 60 - 89 Days Past Due	0	0	0	0	0	0	0
(d) 90 - 179 Days Past Due	0	0	0	0	0	0	0
(e) 180 + Days Past Due	0	0	0	0	0	0	0

NOTES TO FINANCIAL STATEMENTS

2. Accruing Interest 90 - 179 Days Past Due							
(a) Recorded Investment	0	0	0	0	0	0	0
(b) Interest Accrued	0	0	0	0	0	0	0
3. Accruing Interest 180 + Days Past Due							
(a) Recorded Investment	0	0	0	0	0	0	0
(b) Interest Accrued	0	0	0	0	0	0	0
4. Interest Reduced							
(a) Recorded Investment	0	0	0	0	0	0	0
(b) Number of Loans	0	0	0	0	0	0	0
(c) Percent Reduced	0.000%	0.000%	0.000%	0.000%	0.000%	0.000%	0.000%
5. Participant or Co-lender in a Mortgage Loan Agreement							
(a) Recorded Investment	0	0	0	0	0	0	0

- (5) Investment in Impaired Loans With or Without Allowance for Credit Losses and Impaired Loans Subject to a Participant or Co-Lender Mortgage Loan Agreement for Which the Reporting Entity is Restricted from Unilaterally Foreclosing on the Mortgage Loan:

	Farm	Residential		Commercial		Mezzanine	Total
		Insured	All Other	Insured	All Other		
a. Current Year							
1. With Allowance for Credit Losses	0	0	0	0	0	0	0
2. No Allowance for Credit Losses	0	0	0	0	0	0	0
3. Total (1+2)	0	0	0	0	0	0	0
4. Subject to a participant or co-lender mortgage loan agreement for which the reporting entity is restricted from unilaterally foreclosing on the mortgage loan	0	0	0	0	0	0	0
b. Prior Year							
1. With Allowance for Credit Losses	0	0	0	0	0	0	0
2. No Allowance for Credit Losses	0	0	0	0	0	0	0
3. Total (1+2)	0	0	0	0	0	0	0
4. Subject to a participant or co-lender mortgage loan agreement for which the reporting entity is restricted from unilaterally foreclosing on the mortgage loan	0	0	0	0	0	0	0

- (6) Investment in Impaired Loans - Average Recorded Investment, Interest Income Recognized, Recorded Investment on Nonaccrual Status and Amount of Interest Income Recognized Using a Cash-Basis Method of Accounting:

	Farm	Residential		Commercial		Mezzanine	Total
		Insured	All Other	Insured	All Other		
a. Current Year							
1. Average Recorded Investment	0	0	0	0	0	0	0
2. Interest Income Recognized	0	0	0	0	0	0	0
3. Recorded Investments on Nonaccrual Status	0	0	0	0	0	0	0
4. Amount of Interest Income Recognized Using a Cash-Basis Method of Accounting	0	0	0	0	0	0	0
b. Prior Year							
1. Average Recorded Investment	0	0	0	0	0	0	0
2. Interest Income Recognized	0	0	0	0	0	0	0
3. Recorded Investments on Nonaccrual Status	0	0	0	0	0	0	0
4. Amount of Interest Income Recognized Using a Cash-Basis Method of Accounting	0	0	0	0	0	0	0

- (7) Allowance for Credit Losses:

	Current Year	Prior Year
a. Balance at beginning of period	0	0
b. Additions charged to operations	0	0
c. Direct write-downs charged against the allowances	0	0
d. Recoveries of amounts previously charged off	0	0
e. Balance at end of period (a + b - c - d)	0	0

- (8) Mortgage Loans Derecognized as a Result of Foreclosure:

	Current Year
a. Aggregate amount of mortgage loans derecognized	0
b. Real estate collateral recognized	0
c. Other collateral recognized	0
d. Receivables recognized from a government guarantee of the foreclosed mortgage loan	0

- (9) Not applicable

B. Debt Restructuring

	Current Year	Prior Year
(1) Total recorded investment in restructured loans, as of year end	0	0
(2) The realized capital losses related to these loans	0	0
(3) Total contractual commitments to extend credit to debtors owing receivables whose terms have been modified in troubled debt restructurings	0	0

- (4) Not applicable

NOTES TO FINANCIAL STATEMENTS

- (5) The Company reviews fixed income securities for impairment on a quarterly basis. Securities are reviewed for both quantitative and qualitative considerations including, but not limited to: (a) the extent of the decline in fair value below book value, (b) the duration of the decline, (c) significant adverse changes in the financial condition or near term prospects of the investment or issuer, (d) significant change in the business climate or credit ratings of the issuer, (e) general market conditions and volatility, (f) industry factors, and (g) the past impairment of the security holding or the issuer. If the Company believes a decline in the value of a particular investment is temporary, the decline is recorded as an unrealized loss in policyholders' equity. If the decline is believed to be "other-than-temporary," and the Company believes it will not be able to collect all cash flows due on its fixed income securities, then the carrying value of the investment is written down to the expected cash flow amount and a realized loss is recorded as a credit impairment.

E. Dollar Repurchase Agreements and/or Securities Lending Transactions

- (1) The company has not entered into any repurchase agreements during the year. Refer to Note 17B for the policy on requiring collateral for securities lending.
- (2) The Company has not pledged any of its assets as collateral as of December 31, 2022.
- (3) Collateral Received

a. Aggregate Amount Collateral Received

1. Securities Lending	Fair Value
(a) Open	4,588,083
(b) 30 Days or Less	0
(c) 31 to 60 Days	0
(d) 61 to 90 Days	0
(e) Greater Than 90 Days	0
(f) Sub-Total (a + b + c + d + e)	4,588,083
(g) Securities Received	4,268,682
(h) Total Collateral Received (f + g)	8,856,765

2. Dollar Repurchase Agreement	Fair Value
(a) Open	0
(b) 30 Days or Less	0
(c) 31 to 60 Days	0
(d) 61 to 90 Days	0
(e) Greater Than 90 Days	0
(f) Sub-Total (a + b + c + d + e)	0
(g) Securities Received	0
(h) Total Collateral Received (f + g)	0

- b. The fair value of that collateral and of the portion that it has sold or repledged

8,856,765

- c. All collateral is received in the form of cash and/or securities equal to or in excess of 102% of the loaned value and are maintained in a separate custody account. Cash collateral is reinvested into short-term investments as outlined in the terms of the investment agreement. Per the terms of the investment agreement the Company has the right and ability to redeem any eligible securities on short notice.

- (4) Securities Lending Transactions Administered by an Affiliated Agent

Not Applicable for any LMG reporting entity

- (5) Collateral Reinvestment

a. Aggregate Amount Collateral Reinvested

1. Securities Lending	Amortized Cos	Fair Value
(a) Open	0	0
(b) 30 Days or Less	2,402,283	2,402,283
(c) 31 to 60 Days	1,742,260	1,742,260
(d) 61 to 90 Days	443,540	443,540
(e) 91 to 120 Days	0	0
(f) 121 to 180 Days	0	0
(g) 181 to 365 Days	0	0
(h) 1 to 2 years	0	0
(i) 2 to 3 year	0	0
(j) Greater Than 3 years	0	0
(k) Sub-Total (Sum of a through j)	4,588,083	4,588,083
(l) Securities Received	0	0
(m) Total Collateral Reinvested (k + l)	4,588,083	4,588,083

NOTES TO FINANCIAL STATEMENTS

2. Dollar Repurchase Agreement

(a) Open	0	0
(b) 30 Days or Less	0	0
(c) 31 to 60 Days	0	0
(d) 61 to 90 Days	0	0
(e) 91 to 120 Days	0	0
(f) 121 to 180 Days	0	0
(g) 181 to 365 Days	0	0
(h) 1 to 2 years	0	0
(i) 2 to 3 year	0	0
(j) Greater Than 3 years	0	0
(k) Sub-Total (Sum of a through j)	0	0
(l) Securities Received	0	0
(m) Total Collateral Reinvested (k + l)	0	0

b. The reporting entity's sources of cash that it uses to return the cash collateral is dependent on the liquidity of the current market conditions. Under current conditions, the reporting entity could liquidate all or a portion of its cash collateral reinvestment securities in order to meet the collateral calls that could come due under a worst-case scenario.

(6) The Company has not accepted collateral that it is not permitted by contract or custom to sell or re-pledge.

(7) Collateral for securities lending transactions that extend beyond one year from the reporting date

The Company has not accepted collateral that extends beyond one year from the reporting date for securities lending transactions.

Description of Collateral	Amount
Total Collateral Extending beyond one year of reporting date	0

F. Repurchase Agreements Transactions Accounted for as Secured Borrowing

(1) Not applicable.

(2) Type of Repo Trades Used

	FIRST QUARTER	SECOND QUARTER	THIRD QUARTER	FOURTH QUARTER
a. Bilateral (YES/NO)	NO	NO	NO	NO
b. Tri-Party (YES/NO)	NO	NO	NO	NO

(3) Original (Flow) & Residual Maturity

	FIRST QUARTER	SECOND QUARTER	THIRD QUARTER	FOURTH QUARTER
a. Maximum Amount				
1. Open -- No Maturity	0	0	0	0
2. Overnight	0	0	0	0
3. 2 Days to 1 Week	0	0	0	0
4. > 1 Week to 1 Month	0	0	0	0
5. > 1 Month to 3 Months	0	0	0	0
6. > 3 Months to 1 Year	0	0	0	0
7. > 1 Year	0	0	0	0

	FIRST QUARTER	SECOND QUARTER	THIRD QUARTER	FOURTH QUARTER
b. Ending Balance				
1. Open -- No Maturity	0	0	0	0
2. Overnight	0	0	0	0
3. 2 Days to 1 Week	0	0	0	0
4. > 1 Week to 1 Month	0	0	0	0
5. > 1 Month to 3 Months	0	0	0	0
6. > 3 Months to 1 Year	0	0	0	0
7. > 1 Year	0	0	0	0

(4) Not applicable.

(5) Securities "Sold" Under Repo -- Secured Borrowing

	FIRST QUARTER	SECOND QUARTER	THIRD QUARTER	FOURTH QUARTER
a. Maximum Amount				
1. BACV	X X X	X X X	X X X	0
2. Nonadmitted -- Subset of BACV	X X X	X X X	X X X	0
3. Fair Value	0	0	0	0

NOTES TO FINANCIAL STATEMENTS

	FIRST QUARTER	SECOND QUARTER	THIRD QUARTER	FOURTH QUARTER
b. Ending Balance				
1. BACV	X X X	X X X	X X X	0
2. Nonadmitted – Subset of BACV	X X X	X X X	X X X	0
3. Fair Value	0	0	0	0

(6) Securities Sold Under Repo – Secured Borrowing by NAIC Designation

ENDING BALANCE	1 NONE	2 NAIC 1	3 NAIC 2	4 NAIC 3	5 NAIC 4	6 NAIC 5	7 NAIC 6	8 NONADMITTED
a. Bonds - BACV	0	0	0	0	0	0	0	0
b. Bonds - FV	0	0	0	0	0	0	0	0
c. LB & SS - BACV	0	0	0	0	0	0	0	0
d. LB & SS - FV	0	0	0	0	0	0	0	0
e. Preferred Stock - BACV	0	0	0	0	0	0	0	0
f. Preferred Stock - FV	0	0	0	0	0	0	0	0
g. Common Stock	0	0	0	0	0	0	0	0
h. Mortgage Loans - BACV	0	0	0	0	0	0	0	0
i. Mortgage Loans - FV	0	0	0	0	0	0	0	0
j. Real Estate - BACV	0	0	0	0	0	0	0	0
k. Real Estate - FV	0	0	0	0	0	0	0	0
l. Derivatives - BACV	0	0	0	0	0	0	0	0
m. Derivatives - FV	0	0	0	0	0	0	0	0
n. Other Invested Assets - BACV	0	0	0	0	0	0	0	0
o. Other Invested Assets - FV	0	0	0	0	0	0	0	0
p. Total Assets - BACV (a + c + e + g + h + j + l + n)	0	0	0	0	0	0	0	0
q. Total Assets - FV (b + d + f + g + l + k + m + o)	0	0	0	0	0	0	0	0

(7) Collateral Received - Secured Borrowing

	FIRST QUARTER	SECOND QUARTER	THIRD QUARTER	FOURTH QUARTER
a. Maximum Amount				
1. Cash	0	0	0	0
2. Securities (FV)	0	0	0	0

	FIRST QUARTER	SECOND QUARTER	THIRD QUARTER	FOURTH QUARTER
b. Ending Balance				
1. Cash	0	0	0	0
2. Securities (FV)	0	0	0	0

(8) Cash & Non-Cash Collateral Received - Secured Borrowing by NAIC Designation

ENDING BALANCE	1 NONE	2 NAIC 1	3 NAIC 2	4 NAIC 3	5 NAIC 4	6 NAIC 5	7 NAIC 6	8 NONADMITTED
a. Cash	0	0	0	0	0	0	0	0
b. Bonds - FV	0	0	0	0	0	0	0	0
c. LB & SS - FV	0	0	0	0	0	0	0	0
d. Preferred Stock - FV	0	0	0	0	0	0	0	0
e. Common Stock	0	0	0	0	0	0	0	0
f. Mortgage Loans - FV	0	0	0	0	0	0	0	0
g. Real Estate - FV	0	0	0	0	0	0	0	0
h. Derivatives - FV	0	0	0	0	0	0	0	0
i. Other Invested Assets -FV	0	0	0	0	0	0	0	0
j. Total Collateral Assets -FV	0	0	0	0	0	0	0	0

(9) Allocation of Aggregate Collateral by Remaining Contractual Maturity

	FAIR VALUE
a. Overnight and Continuous	0
b. 30 Days or Less	0
c. 31 to 90 Days	0
d. > 90 Days	0

(10) Allocation of Aggregate Collateral Reinvested by Remaining Contractual Maturity

	AMORTIZED COST	FAIR VALUE
a. 30 Days or Less	0	0
b. 31 to 60 Days	0	0
c. 61 to 90 Days	0	0
d. 91 to 120 Days	0	0
e. 121 to 180 Days	0	0
f. 181 to 365 Days	0	0
g. 1 to 2 Years	0	0
h. 2 to 3 Years	0	0
i. > 3 Years	0	0

NOTES TO FINANCIAL STATEMENTS

(11) Liability to Return Collateral - Secured Borrowing (Total)

a. Maximum Amount

- 1. Cash (Collateral - All)
- 2. Securities Collateral (FV)

FIRST QUARTER	SECOND QUARTER	THIRD QUARTER	FOURTH QUARTER
0	0	0	0
0	0	0	0

b. Ending Balance

- 1. Cash (Collateral - All)
- 2. Securities Collateral (FV)

FIRST QUARTER	SECOND QUARTER	THIRD QUARTER	FOURTH QUARTER
0	0	0	0
0	0	0	0

G. Reverse Repurchase Agreements Transactions Accounted for as Secured Borrowing

(1) Not Applicable

(2) Type of Repo Trades Used

- a. Bilateral (YES/NO)
- b. Tri-Party (YES/NO)

FIRST QUARTER	SECOND QUARTER	THIRD QUARTER	FOURTH QUARTER
NO	NO	NO	NO
NO	NO	NO	NO

(3) Original (Flow) & Residual Maturity

a. Maximum Amount

- 1. Open - No Maturity
- 2. Overnight
- 3. 2 Days to 1 Week
- 4. > 1 Week to 1 Month
- 5. > 1 Month to 3 Months
- 6. > 3 Months to 1 Year
- 7. > 1 Year

FIRST QUARTER	SECOND QUARTER	THIRD QUARTER	FOURTH QUARTER
0	0	0	0
0	0	0	0
0	0	0	0
0	0	0	0
0	0	0	0
0	0	0	0
0	0	0	0

b. Ending Balance

- 1. Open -- No Maturity
- 2. Overnight
- 3. 2 Days to 1 Week
- 4. > 1 Week to 1 Month
- 5. > 1 Month to 3 Months
- 6. > 3 Months to 1 Year
- 7. > 1 Year

FIRST QUARTER	SECOND QUARTER	THIRD QUARTER	FOURTH QUARTER
0	0	0	0
0	0	0	0
0	0	0	0
0	0	0	0
0	0	0	0
0	0	0	0
0	0	0	0

(4) Not Applicable

(5) Fair Value of Securities Acquired Under Repo – Secured Borrowing

- a. Maximum Amount
- b. Ending Balance

FIRST QUARTER	SECOND QUARTER	THIRD QUARTER	FOURTH QUARTER
0	0	0	0
0	0	0	0

(6) Securities Sold Under Repo – Secured Borrowing by NAIC Designation

ENDING BALANCE

- a. Bonds - FV
- b. LB & SS - FV
- c. Preferred Stock - FV
- d. Common Stock
- e. Mortgage Loans - FV
- f. Real Estate - FV
- g. Derivatives - FV
- h. Other Invested Assets - FV
- i. Total Assets - FV (Sum of a through h)

	1 NONE	2 NAIC 1	3 NAIC 2	4 NAIC 3	5 NAIC 4	6 NAIC 5	7 NAIC 6	8 NONADMITTED
0	0	0	0	0	0	0	0	0
0	0	0	0	0	0	0	0	0
0	0	0	0	0	0	0	0	0
0	0	0	0	0	0	0	0	0
0	0	0	0	0	0	0	0	0
0	0	0	0	0	0	0	0	0
0	0	0	0	0	0	0	0	0
0	0	0	0	0	0	0	0	0
0	0	0	0	0	0	0	0	0

(7) Collateral Provided - Secured Borrowing

a. Maximum Amount

- 1. Cash
- 2. Securities (FV)
- 3. Securities (BACV)
- 4. Nonadmitted Subset (BACV)

FIRST QUARTER	SECOND QUARTER	THIRD QUARTER	FOURTH QUARTER
0	0	0	0
0	0	0	0
X X X	X X X	X X X	X X X
X X X	X X X	X X X	X X X

NOTES TO FINANCIAL STATEMENTS

	FIRST QUARTER	SECOND QUARTER	THIRD QUARTER	FOURTH QUARTER
b. Ending Balance				
1. Cash	0	0	0	0
2. Securities (FV)	0	0	0	0
3. Securities (BACV)	0	0	0	0
4. Nonadmitted Subset (BACV)	0	0	0	0

	AMORTIZED COST	FAIR VALUE
(8) Allocation of Aggregate Collateral Pledged by Remaining Contractual Maturity		
a. Overnight and Continuous	0	0
b. 30 Days or Less	0	0
c. 31 to 90 Days	0	0
d. > 90 Days	0	0

	FIRST QUARTER	SECOND QUARTER	THIRD QUARTER	FOURTH QUARTER
(9) Recognized Receivable for Return of Collateral – Secured Borrowing				
a. Maximum Amount				
1. Cash	0	0	0	0
2. Securities (FV)	0	0	0	0

	FIRST QUARTER	SECOND QUARTER	THIRD QUARTER	FOURTH QUARTER
b. Ending Balance				
1. Cash	0	0	0	0
2. Securities (FV)	0	0	0	0

	FIRST QUARTER	SECOND QUARTER	THIRD QUARTER	FOURTH QUARTER
(10) Recognized Liability to Return Collateral – Secured Borrowing (Total)				
a. Maximum Amount				
1. Repo Securities Sold/Acquired with Cash Collateral	0	0	0	0
2. Repo Securities Sold/Acquired with Securities Collateral (FV)	0	0	0	0

	FIRST QUARTER	SECOND QUARTER	THIRD QUARTER	FOURTH QUARTER
b. Ending Balance				
1. Repo Securities Sold/Acquired with Cash Collateral	0	0	0	0
2. Repo Securities Sold/Acquired with Securities Collateral (FV)	0	0	0	0

H. Repurchase Agreements Transactions Accounted for as a Sale

(1) Not Applicable

(2) Type of Repo Trades Used

	FIRST QUARTER	SECOND QUARTER	THIRD QUARTER	FOURTH QUARTER
a. Bilateral (YES/NO)	NO	NO	NO	NO
b. Tri-Party (YES/NO)	NO	NO	NO	NO

(3) Original (Flow) & Residual Maturity

	FIRST QUARTER	SECOND QUARTER	THIRD QUARTER	FOURTH QUARTER
a. Maximum Amount				
1. Open - No Maturity	0	0	0	0
2. Overnight	0	0	0	0
3. 2 Days to 1 Week	0	0	0	0
4. > 1 Week to 1 Month	0	0	0	0
5. > 1 Month to 3 Months	0	0	0	0
6. > 3 Months to 1 Year	0	0	0	0
7. > 1 Year	0	0	0	0

	FIRST QUARTER	SECOND QUARTER	THIRD QUARTER	FOURTH QUARTER
b. Ending Balance				
1. Open - No Maturity	0	0	0	0
2. Overnight	0	0	0	0
3. 2 Days to 1 Week	0	0	0	0
4. > 1 Week to 1 Month	0	0	0	0
5. > 1 Month to 3 Months	0	0	0	0
6. > 3 Months to 1 Year	0	0	0	0
7. > 1 Year	0	0	0	0

(4) Not Applicable

(5) Securities "Sold" Under Repo - Sale

NOTES TO FINANCIAL STATEMENTS

	FIRST QUARTER	SECOND QUARTER	THIRD QUARTER	FOURTH QUARTER
a. Maximum Amount				
1. BACV	X X X	X X X	X X X	0
2. Nonadmitted - Subset of BACV	X X X	X X X	X X X	0
3. Fair Value	0	0	0	0

	FIRST QUARTER	SECOND QUARTER	THIRD QUARTER	FOURTH QUARTER
b. Ending Balance				
1. BACV	X X X	X X X	X X X	0
2. Nonadmitted - Subset of BACV	X X X	X X X	X X X	0
3. Fair Value	0	0	0	0

(6) Securities Sold Under Repo - Sale by NAIC Designation

	1 NONE	2 NAIC 1	3 NAIC 2	4 NAIC 3	5 NAIC 4	6 NAIC 5	7 NAIC 6	8 NONADMITTED
ENDING BALANCE								
a. Bonds - BACV	0	0	0	0	0	0	0	0
b. Bonds - FV	0	0	0	0	0	0	0	0
c. LB & SS - BACV	0	0	0	0	0	0	0	0
d. LB & SS - FV	0	0	0	0	0	0	0	0
e. Preferred Stock - BACV	0	0	0	0	0	0	0	0
f. Preferred Stock - FV	0	0	0	0	0	0	0	0
g. Common Stock	0	0	0	0	0	0	0	0
h. Mortgage Loans - BACV	0	0	0	0	0	0	0	0
i. Mortgage Loans - FV	0	0	0	0	0	0	0	0
j. Real Estate - BACV	0	0	0	0	0	0	0	0
k. Real Estate - FV	0	0	0	0	0	0	0	0
l. Derivatives - BACV	0	0	0	0	0	0	0	0
m. Derivatives - FV	0	0	0	0	0	0	0	0
n. Other Invested Assets - BACV	0	0	0	0	0	0	0	0
o. Other Invested Assets - FV	0	0	0	0	0	0	0	0
p. Total Assets - BACV (a + c + e + g + h + j + l + n)	0	0	0	0	0	0	0	0
q. Total Assets - FV (b + d + f + g + i + k + m + o)	0	0	0	0	0	0	0	0

(7) Proceeds Received - Sale

	FIRST QUARTER	SECOND QUARTER	THIRD QUARTER	FOURTH QUARTER
a. Maximum Amount				
1. Cash	0	0	0	0
2. Securities (FV)	0	0	0	0
3. Nonadmitted	0	0	0	0

	FIRST QUARTER	SECOND QUARTER	THIRD QUARTER	FOURTH QUARTER
b. Ending Balance				
1. Cash	0	0	0	0
2. Securities (FV)	0	0	0	0
3. Nonadmitted	0	0	0	0

(8) Cash & Non-Cash Collateral Received - Secured Borrowing by NAIC Designation

	1 NONE	2 NAIC 1	3 NAIC 2	4 NAIC 3	5 NAIC 4	6 NAIC 5	7 NAIC 6	8 NONADMITTED
ENDING BALANCE								
a. Bonds - FV	0	0	0	0	0	0	0	0
b. LB & SS - FV	0	0	0	0	0	0	0	0
c. Preferred Stock - FV	0	0	0	0	0	0	0	0
d. Common Stock	0	0	0	0	0	0	0	0
e. Mortgage Loans - FV	0	0	0	0	0	0	0	0
f. Real Estate - FV	0	0	0	0	0	0	0	0
g. Derivatives - FV	0	0	0	0	0	0	0	0
h. Other Invested Assets - FV	0	0	0	0	0	0	0	0
i. Total Collateral Assets - FV (Sum of a through h)	0	0	0	0	0	0	0	0

(9) Recognized Forward Resale Commitment

	FIRST QUARTER	SECOND QUARTER	THIRD QUARTER	FOURTH QUARTER
a. Cash (Collateral - All)	0	0	0	0
b. Securities Collateral (FV)	0	0	0	0

I. Reverse Repurchase Agreements Transactions Accounted for as a Sale

(1) Not Applicable

(2) Type of Repo Trades Used

NOTES TO FINANCIAL STATEMENTS

	FIRST QUARTER	SECOND QUARTER	THIRD QUARTER	FOURTH QUARTER
a. Bilateral (YES/NO)	NO	NO	NO	NO
b. Tri-Party (YES/NO)	NO	NO	NO	NO

(3) Original (Flow) & Residual Maturity

	FIRST QUARTER	SECOND QUARTER	THIRD QUARTER	FOURTH QUARTER
a. Maximum Amount				
1. Open - No Maturity	0	0	0	0
2. Overnight	0	0	0	0
3. 2 Days to 1 Week	0	0	0	0
4. > 1 Week to 1 Month	0	0	0	0
5. > 1 Month to 3 Months	0	0	0	0
6. > 3 Months to 1 Year	0	0	0	0
7. > 1 Year	0	0	0	0

	FIRST QUARTER	SECOND QUARTER	THIRD QUARTER	FOURTH QUARTER
b. Ending Balance				
1. Open - No Maturity	0	0	0	0
2. Overnight	0	0	0	0
3. 2 Days to 1 Week	0	0	0	0
4. > 1 Week to 1 Month	0	0	0	0
5. > 1 Month to 3 Months	0	0	0	0
6. > 3 Months to 1 Year	0	0	0	0
7. > 1 Year	0	0	0	0

(4) Not Applicable

(5) Securities Acquired Under Repo - Sale

	FIRST QUARTER	SECOND QUARTER	THIRD QUARTER	FOURTH QUARTER
a. Maximum Amount				
1. BACV	X X X	X X X	X X X	0
2. Nonadmitted - Subset of BACV	X X X	X X X	X X X	0
3. Fair Value	0	0	0	0

	FIRST QUARTER	SECOND QUARTER	THIRD QUARTER	FOURTH QUARTER
b. Ending Balance				
1. BACV	X X X	X X X	X X X	0
2. Nonadmitted - Subset of BACV	X X X	X X X	X X X	0
3. Fair Value	0	0	0	0

(6) Securities Acquired Under Repo – Sale by NAIC Designation

	1 NONE	2 NAIC 1	3 NAIC 2	4 NAIC 3	5 NAIC 4	6 NAIC 5	7 NAIC 6	8 NONADMITTED
ENDING BALANCE								
a. Bonds - BACV	0	0	0	0	0	0	0	0
b. Bonds - FV	0	0	0	0	0	0	0	0
c. LB & SS - BACV	0	0	0	0	0	0	0	0
d. LB & SS - FV	0	0	0	0	0	0	0	0
e. Preferred Stock - BACV	0	0	0	0	0	0	0	0
f. Preferred Stock - FV	0	0	0	0	0	0	0	0
g. Common Stock	0	0	0	0	0	0	0	0
h. Mortgage Loans - BACV	0	0	0	0	0	0	0	0
i. Mortgage Loans - FV	0	0	0	0	0	0	0	0
j. Real Estate - BACV	0	0	0	0	0	0	0	0
k. Real Estate - FV	0	0	0	0	0	0	0	0
l. Derivatives - BACV	0	0	0	0	0	0	0	0
m. Derivatives - FV	0	0	0	0	0	0	0	0
n. Other Invested Assets - BACV	0	0	0	0	0	0	0	0
o. Other Invested Assets - FV	0	0	0	0	0	0	0	0
p. Total Assets - BACV (a + c + e + g + h + j + l + n)	0	0	0	0	0	0	0	0
q. Total Assets - FV (b + d + f + g + i + k + m + o)	0	0	0	0	0	0	0	0

(7) Proceeds Provided - Sale

	FIRST QUARTER	SECOND QUARTER	THIRD QUARTER	FOURTH QUARTER
a. Maximum Amount				
1. Cash	0	0	0	0
2. Securities (FV)	0	0	0	0
3. Securities (BACV)	X X X	X X X	X X X	X X X
4. Nonadmitted Subset (BACV)	X X X	X X X	X X X	X X X

NOTES TO FINANCIAL STATEMENTS

	FIRST QUARTER	SECOND QUARTER	THIRD QUARTER	FOURTH QUARTER
b. Ending Balance				
1. Cash	0	0	0	0
2. Securities (FV)	0	0	0	0
3. Securities (BACV)	0	0	0	0
4. Nonadmitted Subset (BACV)	0	0	0	0

(8) Recognized Forward Resale Commitment

	FIRST QUARTER	SECOND QUARTER	THIRD QUARTER	FOURTH QUARTER
a. Maximum Amount	0	0	0	0
b. Ending Balance	0	0	0	0

J. Real Estate

Not Applicable

K. The Company does not hold investments in low-income housing tax credits.

L. Restricted Assets

(1) Restricted Assets (Including Pledged)

Restricted Asset Category	Gross (Admitted & Nonadmitted) Restricted						
	Calendar Year					6	7
	1	2	3	4	5		
Total General Account (G/A)	G/A Supporting S/A Activity (a)	Total Separate Account (S/A) Restricted Assets	S/A Assets Supporting G/A Activity (b)	Total (1 plus 3)	Total From Prior Year	Increase/ (Decrease) (5 minus 6)	
a. Subject to contractual obligation for which liability is not shown	0	0	0	0	0	0	0
b. Collateral held under security lending agreements	4,588,083	0	0	0	4,588,083	1,183,040	3,405,043
c. Subject to repurchase agreements	0	0	0	0	0	0	0
d. Subject to reverse repurchase agreements	0	0	0	0	0	0	0
e. Subject to dollar repurchase agreements	0	0	0	0	0	0	0
f. Subject to dollar reverse repurchase agreements	0	0	0	0	0	0	0
g. Placed under option contracts	0	0	0	0	0	0	0
h. Letter stock or securities restricted as to sale - excluding FHLB capital stock	0	0	0	0	0	0	0
i. FHLB capital stock	0	0	0	0	0	0	0
j. On deposit with states	6,392,639	0	0	0	6,392,639	6,381,707	10,932
k. On deposit with other regulatory bodies	165,686	0	0	0	165,686	164,643	1,043
l. Pledged as collateral to FHLB (including assets backing funding agreements)	0	0	0	0	0	0	0
m. Pledged as collateral not captured in other categories	0	0	0	0	0	0	0
n. Other restricted Assets	0	0	0	0	0	0	0
o. Total Restricted Assets (Sum of a through n)	11,146,408	0	0	0	11,146,408	7,729,390	3,417,018

(a) Subset of Column 1

(b) Subset of Column 3

NOTES TO FINANCIAL STATEMENTS

	Current Year			
	8	9	Percentage	
	Total Nonadmitted Restricted	Total Admitted Restricted (5 minus 8)	10	11
			Gross (Admitted & Nonadmitted) Restricted to Total Assets (c)	Admitted Restricted to Total Admitted Assets (d)
Restricted Asset Category				
a. Subject to contractual obligation for which liability is not shown	0	0	0.000	0.000
b. Collateral held under security lending agreements	0	4,588,083	3.484	3.484
c. Subject to repurchase agreements	0	0	0.000	0.000
d. Subject to reverse repurchase agreements	0	0	0.000	0.000
e. Subject to dollar repurchase agreements	0	0	0.000	0.000
f. Subject to dollar reverse repurchase agreements	0	0	0.000	0.000
g. Placed under option contracts	0	0	0.000	0.000
h. Letter stock or securities restricted as to sale - excluding FHLB capital stock	0	0	0.000	0.000
i. FHLB capital stock	0	0	0.000	0.000
j. On deposit with states	0	6,392,639	0.000	0.000
k. On deposit with other regulatory bodies	0	165,686	0.126	0.126
l. Pledged as collateral to FHLB (including assets backing funding agreements)	0	0	0.000	0.000
m. Pledged as collateral not captured in other categories	0	0	0.000	0.000
n. Other restricted Assets	0	0	0.000	0.000
o. Total Restricted Assets (Sum of a through n)	0	11,146,408	3.610	3.610

(a) Column 5 divided by Assets Page, Column 1, Line 28

(b) Column 9 divided by Assets Page, Column 1, Line 28

(2) Details of Assets Pledged as Collateral Not Captured in Other Categories (Contracts that Share Similar Characteristics, Such as Reinsurance and Derivatives, are Reported in Aggregate)

	Gross (Admitted & Nonadmitted) Restricted						
	Current Year					6	7
	1	2	3	4	5		
	Total General Account (G/A)	G/A Supporting S/A Activity (a)	Total Separate Account (S/A) Restricted Assets	S/A Assets Supporting G/A Activity (b)	Total (1 plus 3)	Total From Prior Year	Increase/ Decrease (5 minus 6)
Description of Assets							
.....							
Total (c)	0	0	0	0	0	0	

	8	Percentage	
	Total Current Year Admitted Restricted	9	10
		Gross] (Admitted & Nonadmitted) Restricted to Total Assets	Admitted Restricted to Total Admitted Assets
Description of Assets			
.....			
Total (c)	0	0.000	0.000

(a) Subset of column 1

(b) Subset of column 3

(c) Total Line for Column 1 through 7 should equal 5L(1)m Columns 1 through 7 respectively and Total Line for Columns 8 through 10 should equal 5L(1)m Columns 9 through 11 respectively

(3) Detail of Other Restricted Assets (Contracts that Share Similar Characteristics, Such as Reinsurance and Derivatives, Are Reported in the Aggregate)

	Gross (Admitted & Nonadmitted) Restricted						
	Current Year					6	7
	1	2	3	4	5		
	Total General Account (G/A)	G/A Supporting S/A Activity (a)	Total Separate Account (S/A) Restricted Assets	S/A Assets Supporting G/A Activity (b)	Total (1 plus 3)	Total From Prior Year	Increase/ Decrease (5 minus 6)
Description of Assets							
.....							
Total (c)	0	0	0	0	0	0	

NOTES TO FINANCIAL STATEMENTS

Description of Assets	8 Total Current Year Admitted Restricted	Percentage	
		9 Gross] (Admitted & Nonadmitted) Restricted to Total Assets	10 Admitted Restricted to Total Admitted Assets
Total (c)	0	0.000	0.000

(a) Subset of column 1

(b) Subset of column 3

(c) Total Line for Column 1 through 7 should equal 5L(1)m Columns 1 through 7 respectively and Total Line for Columns 8 through 10 should equal 5L(1)m Columns 9 through 11 respectively

(4) Collateral Received and Reflected as Assets Within the Reporting Entity's Financial Statement.

Collateral Assets	1 Book/Adjusted Carrying Value (BACV)	2 Fair Value	3 % of BACV to Total Assets (Admitted and Nonadmitted*)	4 % of BACV to Total Admitted Assets**
General Account:				
a. Cash, Cash Equivalents and Short-Term Investments	0	0	0.000	0.000
b. Schedule D, Part 1	0	0	0.000	0.000
c. Schedule D, Part 2, Section 1	0	0	0.000	0.000
d. Schedule D, Part 2, Section 2	0	0	0.000	0.000
e. Schedule B	0	0	0.000	0.000
f. Schedule A	0	0	0.000	0.000
g. Schedule BA, Part 1	0	0	0.000	0.000
h. Schedule DL, Part 1	4,588,083	4,588,083	3.484	3.484
i. Other	0	0	0.000	0.000
j. Total Collateral Assets (a+b+c+d+e+f+g+h+i)	4,588,083	4,588,083	3.484	3.484
Separate Account:				
k. Cash, Cash Equivalents and Short-Term Investments	0	0	0.000	0.000
l. Schedule D, Part 1	0	0	0.000	0.000
m. Schedule D, Part 2, Section 1	0	0	0.000	0.000
n. Schedule D, Part 2, Section 2	0	0	0.000	0.000
o. Schedule B	0	0	0.000	0.000
p. Schedule A	0	0	0.000	0.000
q. Schedule BA, Part 1	0	0	0.000	0.000
r. Schedule DL, Part 1	0	0	0.000	0.000
s. Other	0	0	0.000	0.000
t. Total Collateral Assets (k+l+m+n+o+p+q+r+s)	0	0	0.000	0.000

* j = Column 1 divided by Asset Page, Line 26 (Column 1)
t = Column 1 divided by Asset Page, Line 27 (Column 1)

** j = Column 1 divided by Asset Page, Line 26 (Column 3)
t = Column 1 divided by Asset Page, Line 27 (Column 3)

1 Amount	2 % of Liability to Total Liabilities*
u. Recognized Obligation to Return Collateral Assets (General Account)	4,588,083 8.208
v. Recognized Obligation to Return Collateral Asset (Separate Account)	0 0.000

* u = Column 1 divided by Liability Page, Line 26 (Column 1)
v = Column 1 divided by Liability Page, Line 27 (Column 1)

M. Working Capital Finance Investments

Not Applicable

N. Offsetting and Netting of Assets and Liabilities

Not Applicable

O. 5GI Securities

Not Applicable

P. Short Sales

Not Applicable

Q. Prepayment Penalty and Acceleration Fees

Not Applicable

R. Reporting Entity's Share of Cash Pool by Asset type.

NOTES TO FINANCIAL STATEMENTS

Asset Type	Percent Share
(1) Cash	0.000
(2) Cash Equivalents	0.109
(3) Short-Term Investments	0.000
(4) Total	0.109

6. Joint Ventures, Partnerships and Limited Liability Companies

- A. Not Applicable
- B. Not Applicable

7. Investment Income

- A. The Company does not admit investment income due and accrued if amounts are over 90 days past due.
- B. No amounts were excluded as of December 31, 2022.

8. Derivative Instruments

A. Derivatives under SSAP No. 86—Derivatives

- (1) The Company's investment activities do not include derivatives. However, the Company may acquire derivatives as additions to bond, common stock, or preferred stock investments. These derivatives are ancillary to the overall investment and are immaterial to the underlying investment portfolio.
- (2) Not Applicable
- (3) Not Applicable
- (4) Not Applicable
- (5) Not Applicable
- (6) Not Applicable
- (7) Not Applicable
- (8)

a.

Fiscal Year	Derivative Premium Payments Due
Year Ending December 31	
1. 2022	\$ 0
2. 2023	\$ 0
3. 2024	\$ 0
4. 2025	\$ 0
5. Thereafter	\$ 0
6. Total Future Settled Premiums	\$ 0

b.

	Undiscounted Future Premium Commitments	Derivative Fair Value With Premium Commitments (Reported on DB)	Derivative Fair Value Excluding Impact of Future Settled Premiums
1. Prior Year	\$ 0	\$ 0	\$ 0
2. Current Year	\$ 0	\$ 0	\$ 0

B. Derivatives under SSAP No. 108—Derivative Hedging Variable Annuity Guarantees

- (1) Discussion of hedged item/hedging instruments and hedging strategy:
Not Applicable

NOTES TO FINANCIAL STATEMENTS

(2) Recognition of gains/losses and deferred assets and liabilities

a. Scheduled Amortization

Amortization Year	Deferred Assets	Deferred Liabilities
1. 2020	\$ 0	\$ 0
2. 2021	\$ 0	\$ 0
3. 2022	\$ 0	\$ 0
4. 2023	\$ 0	\$ 0
5. 2024	\$ 0	\$ 0
6. 2025	\$ 0	\$ 0
7. 2026	\$ 0	\$ 0
8. 2027	\$ 0	\$ 0
9. 2028	\$ 0	\$ 0
10. 2029	\$ 0	\$ 0
11. Total	\$ 0	\$ 0

b. Total Deferred Balance * \$ 0

* Should agree to Column 18 of Schedule DB, Part E

c. Reconciliation of Amortization:

1. Prior Year Total Deferred Balance	\$ 0
2. Current Year Amortization	\$ 0
3. Current Year Deferred Recognition	\$ 0
4. Ending Deferred Balance [1-(2+3)]	\$ 0

d. Open Derivative Removed from SSAP No. 108 and Captured in Scope of SSAP No. 86

1. Total Derivative Fair Value Change	\$ 0
2. Change in Fair Value Reflected as a Natural Offset to VM21 Liability under SSAP No. 108	\$ 0
3. Change in Fair Value Reflected as a Deferred Asset / Liability Under SSAP No. 108	\$ 0
4. Other Changes	\$ 0
5. Unrealized Gain / Loss Recognized for Derivative Under SSAP No. 86 [1-(sum of 2 through 4)]	\$ 0

e. Open Derivative Removed from SSAP No. 86 and Captured in Scope of SSAP No. 108

1. Total Derivative Fair Value Change	\$ 0
2. Unrealized Gain / Loss Recognized Prior to the Reclassification to SSAP No. 108	\$ 0
3. Other Changes	\$ 0
4. Fair Value Change Available for Application under SSAP No. 108 [1-(2+3)]	\$ 0

(3) Hedging Strategies Identified as No Longer Highly Effective

b. Details of Hedging Strategies Identified as No Longer Highly Effective

Unique Identifier	Date Domiciliary State Notified	Amortization (# of years) 5 or Less	Recognized Deferred Assets	Recognized Deferred Liabilities

c. Amortization

Amortization Year	Recognized Deferred Assets	Recognized Deferred Liabilities	Accelerated Amortization	Original Amortization
1. 2020	\$ 0	\$ 0	\$ 0	\$ 0
2. 2021	\$ 0	\$ 0	\$ 0	\$ 0
3. 2022	\$ 0	\$ 0	\$ 0	\$ 0
4. 2023	\$ 0	\$ 0	\$ 0	\$ 0
5. 2024	\$ 0	\$ 0	\$ 0	\$ 0

6. Total Adjusted Amortization \$ 0

NOTES TO FINANCIAL STATEMENTS

(4) Hedging Strategies Terminated

b. Details of Hedging Strategies Terminated

Unique Identifier	Date Domiciliary State Notified	Amortization (# of years) 5 or Less	Recognized Deferred Assets	Recognized Deferred Liabilities

c. Amortization

Amortization Year	Recognized Deferred Assets	Recognized Deferred Liabilities	Accelerated Amortization	Original Amortization
1. 2020	\$ 0	\$ 0	\$ 0	\$ 0
2. 2021	\$ 0	\$ 0	\$ 0	\$ 0
3. 2022	\$ 0	\$ 0	\$ 0	\$ 0
4. 2023	\$ 0	\$ 0	\$ 0	\$ 0
5. 2024	\$ 0	\$ 0	\$ 0	\$ 0

6. Total Adjusted Amortization \$ 0

9. Income Taxes

A. The components of the net deferred tax asset/(liability) at Dec. 31 are as follows:

	12/31/2022			12/31/2021		
	(1)	(2)	(3)	(4)	(5)	(6)
	Ordinary	Capital	(Col 1 + 2) Total	Ordinary	Capital	(Col 4 + 5) Total
a. Gross Deferred Tax Assets	\$ 9,000	42,000	51,000	9,000	85,000	94,000
b. Statutory Valuation Allowance Adjustments	\$ 0	0	0	0	0	0
c. Adjusted Gross Deferred Tax Assets (1a - 1b)	\$ 9,000	42,000	51,000	9,000	85,000	94,000
d. Deferred Tax Assets Nonadmitted	\$ 0	0	0	0	40,000	40,000
e. Subtotal Net Admitted Deferred Tax Asset (1c - 1d)	\$ 9,000	42,000	51,000	9,000	45,000	54,000
f. Deferred Tax Liabilities	\$ 54,000	45,000	99,000	45,000	45,000	90,000
g. Net Admitted Deferred Tax Assets / (Net Deferred Tax Liability) (1e - 1f)	\$ (45,000)	(3,000)	(48,000)	(36,000)	0	(36,000)

	Change		
	(7)	(8)	(9)
	(Col 1 - 4) Ordinary	(Col 2 - 5) Capital	(Col 7 + 8) Total
a. Gross Deferred Tax Assets	\$ 0	(43,000)	(43,000)
b. Statutory Valuation Allowance Adjustments	\$ 0	0	0
c. Adjusted Gross Deferred Tax Assets (1a - 1b)	\$ 0	(43,000)	(43,000)
d. Deferred Tax Assets Nonadmitted	\$ 0	(40,000)	(40,000)
e. Subtotal Net Admitted Deferred Tax Asset (1c - 1d)	\$ 0	(3,000)	(3,000)
f. Deferred Tax Liabilities	\$ 9,000	0	9,000
g. Net Admitted Deferred Tax Assets / (Net Deferred Tax Liability) (1e - 1f)	\$ (9,000)	(3,000)	(12,000)

NOTES TO FINANCIAL STATEMENTS

	12/31/2022			12/31/2021		
	(1)	(2)	(3)	(4)	(5)	(6)
	Ordinary	Capital	(Col 1 + 2) Total	Ordinary	Capital	(Col 4 + 5) Total
Admission Calculation Components SSAP No. 101						
a. Federal Income Taxes Paid In Prior Years Recoverable Through Loss Carrybacks.	\$ 0	0	0	0	0	0
b. Adjusted Gross Deferred Tax Assets Expected To Be Realized (Excluding The Amount Of Deferred Tax Assets From 2(a) above) After Application of the Threshold Limitation. (The Lesser of 2(b)1 and 2(b)2 Below)	\$ 0	0	0	0	0	0
1. Adjusted Gross Deferred Tax Assets to be Realized Following the Balance Sheet Date.	\$ 0	0	0	0	0	0
2. Adjusted Gross Deferred Tax Assets Allowed per Limitation Threshold	\$ X X X	X X X	11,303,357	X X X	X X X	11,160,974
c. Adjusted Gross Deferred Tax Assets (Excluding the Amount Of Deferred Tax Assets From 2(a) and 2(b) above) Offset by Gross Deferred Tax Liabilities.	\$ 9,000	42,000	51,000	9,000	45,000	54,000
d. Deferred Tax Assets Admitted as the result of application of SSAP No. 101. Total (2(a) + 2(b) + 2(c))	\$ 9,000	42,000	51,000	9,000	45,000	54,000

	Change		
	(1)	(2)	(3)
	(Col 1 - 4) Ordinary	(Col 2 - 5) Capital	(Col 7 + 8) Total
Admission Calculation Components SSAP No. 101			
a. Federal Income Taxes Paid In Prior Years Recoverable Through Loss Carrybacks.	\$ 0	0	0
b. Adjusted Gross Deferred Tax Assets Expected To Be Realized (Excluding The Amount Of Deferred Tax Assets From 2(a) above) After Application of the Threshold Limitation. (The Lesser of 2(b)1 and 2(b)2 Below)	\$ 0	0	0
1. Adjusted Gross Deferred Tax Assets to be Realized Following the Balance Sheet Date.	\$ 0	0	0
2. Adjusted Gross Deferred Tax Assets Allowed per Limitation Threshold	\$ X X X	X X X	142,383
c. Adjusted Gross Deferred Tax Assets (Excluding the Amount Of Deferred Tax Assets From 2(a) and 2(b) above) Offset by Gross Deferred Tax Liabilities.	\$ 0	(3,000)	(3,000)
d. Deferred Tax Assets Admitted as the result of application of SSAP No. 101. Total (2(a) + 2(b) + 2(c))	\$ 0	(3,000)	(3,000)

	2022	2021
a. Ratio Percentage Used to Determine Recover Period And Threshold Limitation Amount.	10268.200%	6406.000%
b. Amount Of Adjusted Capital And Surplus Used To Determine Recovery Period And Threshold Limitation In 2(b)2 Above.	\$ 75,787,711.000	74,461,492.000

	12/31/2022		12/31/2021		Change	
	(1)	(2)	(3)	(4)	(5)	(6)
	Ordinary	Capital	Ordinary	Capital	(Col 1 - 3) Ordinary	(Col 2 - 4) Capital
Impact of Tax-Planning Strategies						
a. Determination of Adjusted Gross Deferred Tax Assets and Net Admitted Deferred Tax Assets, By Tax Character As A Percentage.						
1. Adjusted Gross DTAs Amount From Note 9A1(c)	\$ 9,000	42,000	9,000	85,000	0	(43,000)
2. Percentage of Adjusted Gross DTAs By Tax Character Attributable To The Impact of Tax Planning Strategies	0.000	0.000	0.000	0.000	0.000	0.000
3. Net Admitted Adjusted Gross DTAs Amount from Note 9A1(e)	\$ 9,000	42,000	9,000	45,000	0	(3,000)
4. Percentage of Net Admitted Adjusted Gross DTAs by Tax Character Attributable To The Impact of Tax Planning Strategies	0.000	0.000	0.000	0.000	0.000	0.000

b. Does the Company's Tax-planning Strategies include the use of reinsurance? NO

B. Regarding deferred tax liabilities that are not recognized:

The Company does not have any DTLs described in SSAP No. 101 Income Taxes, a Replacement of SSAP No. 10R and SSAP No. 10, paragraph 23.

C. Current income taxes incurred consist of the following major components:

(1)	(2)	(3)
12/31/2022	12/31/2021	(Col 1 - 2) Change

NOTES TO FINANCIAL STATEMENTS

(1) Current Income Tax			
a. Federal	\$ 210,420	266,409	(55,989)
b. Foreign	\$ 0	0	0
c. Subtotal	\$ 210,420	266,409	(55,989)
d. Federal Income Tax on net capital gains	\$ 18,580	9,591	8,989
e. Utilization of capital loss carry-forwards	\$ 0	0	0
f. Other	\$ 0	0	0
g. Federal and foreign income taxes incurred	\$ 229,000	276,000	(47,000)

(2) Deferred Tax Assets:

a. Ordinary

1. Discounting of unpaid losses	\$ 0	0	0
2. Unearned premium reserve	\$ 0	0	0
3. Policyholder reserves	\$ 0	0	0
4. Investments	\$ 9,000	9,000	0
5. Deferred acquisition costs	\$ 0	0	0
6. Policyholder dividends accrual	\$ 0	0	0
7. Fixed assets	\$ 0	0	0
8. Compensation and benefits accrual	\$ 0	0	0
9. Pension accrual	\$ 0	0	0
10. Receivables - nonadmitted	\$ 0	0	0
11. Net operating loss carry-forward	\$ 0	0	0
12. Tax credit carry-forward	\$ 0	0	0
13. Other (including items <5% of total ordinary tax assets)	\$ 0	0	0
99. Subtotal	\$ 9,000	9,000	0

b. Statutory valuation allowance adjustment	\$ 0	0	0
c. Nonadmitted	\$ 0	0	0
d. Admitted ordinary deferred tax assets (2a99 - 2b - 2c)	\$ 9,000	9,000	0

e. Capital:

1. Investments	\$ 42,000	85,000	(43,000)
2. Net capital loss carry-forward	\$ 0	0	0
3. Real estate	\$ 0	0	0
4. Other (including items <5% of total capital tax assets)	\$ 0	0	0
99. Subtotal	\$ 42,000	85,000	(43,000)

f. Statutory valuation allowance adjustment	\$ 0	0	0
g. Nonadmitted	\$ 0	40,000	(40,000)
h. Admitted capital deferred tax assets (2e99 - 2f - 2g)	\$ 42,000	45,000	(3,000)
i. Admitted deferred tax assets (2d + 2h)	\$ 51,000	54,000	(3,000)

(3) Deferred Tax Liabilities:

a. Ordinary

1. Investments	\$ 47,000	38,000	9,000
2. Fixed assets	\$ 7,000	7,000	0
3. Deferred and uncollected premium	\$ 0	0	0
4. Policyholder reserves	\$ 0	0	0
5. Other (including items <5% of total ordinary tax liabilities)	\$ 0	0	0
99. Subtotal	\$ 54,000	45,000	9,000

b. Capital:

1. Investments	\$ 45,000	45,000	0
2. Real Estate	\$ 0	0	0
3. Other (including items <5% of total capital tax liabilities)	\$ 0	0	0
99. Subtotal	\$ 45,000	45,000	0

c. Deferred tax liabilities (3a99 + 3b99)	\$ 99,000	90,000	9,000
---	-----------	--------	-------

(4) Net deferred tax assets/liabilities (2i - 3c)	\$ (48,000)	(36,000)	(12,000)
---	-------------	----------	----------

D. Effective tax rates differ from the current statutory rate of 21% principally due to the effects of tax exempt income and deferred intercompany transactions

E. Details below:

NOTES TO FINANCIAL STATEMENTS

- (1) The Company has no net operating loss or tax credit carry-forwards available to offset future net income subject to Federal income tax.
- (2) The amount of Federal income taxes incurred and available for recoupment in the event of future losses is \$228,000 from the current year and \$275,000 from the preceding year.
- (3) The Company does not have deposits admitted under Section 6603 of the Internal Revenue Code.

F. The method of federal income tax allocation is subject to a written agreement. Allocation is based upon separate return calculations with credit applied for losses as appropriate. The Company has the enforceable right to recoup prior year payments in the event of future losses.

The Company's Federal income tax return is consolidated with the following entities:

Andover, Inc.	Liberty RE (Bermuda) Limited
America First Insurance Company	Liberty Sponsored Insurance (Vermont), Inc.
America First Lloyd's Insurance Company	Liberty Surplus Insurance Corporation
American Compensation Insurance Company	LIH-RE of America Corporation
American Economy Insurance Company	LIU Specialty Insurance Agency Inc.
American Fire and Casualty Company	LM General Insurance Company
American States Insurance Company	LM Insurance Corporation
American States Insurance Company of Texas	LM Property and Casualty Insurance Company
American States Lloyds Insurance Company	LMCRT-FRE-01 IC
American States Preferred Insurance Company	LMHC Massachusetts Holdings Inc.
Berkeley Management Corporation	Managed Care Associates Inc.
Bloomington Compensation Insurance Company	Meridian Security Insurance Company
Colorado Casualty Insurance Company	Mid-American Fire & Casualty Company
Consolidated Insurance Company	Milbank Insurance Company
Diversified Settlements, Inc.	Nationale Borg Reinsurance N.V.
Eagle Development Corporation	North Pacific Insurance Company
Emerald City Insurance Agency, Inc.	Ocasco Budget, Inc.
Employers Insurance Company of Wausau	OCI Printing, Inc.
Excelsior Insurance Company	Ohio Casualty Corporation
Excess Risk Reinsurance Inc.	Ohio Security Insurance Company
Facilitators, Inc.	Open Seas Solutions, Inc.
F.B. Beattie & Co., Inc.	Oregon Automobile Insurance Company
First National Insurance Company of America	Peerless Indemnity Insurance Company
First State Agency Inc.	Peerless Insurance Company
General America Corporation	Plaza Insurance Company
General America Corporation of Texas	Pymatuning, Inc.
General Insurance Company of America	Rianoc Research Corporation
Golden Eagle Insurance Corporation	Rockhill Holding Company
Gulf States AIF, Inc.	Rockhill Insurance Company
Hawkeye-Security Insurance Company	RTW, Inc.
Indiana Insurance Company	SAFECARE Company, Inc.
Insurance Company of Illinois	Safeco Corporation
Ironshore Holdings (US) Inc.	Safeco General Agency, Inc.
Ironshore Indemnity Inc.	Safeco Insurance Company of America
Liberty Specialty Markets Bermuda Limited	Safeco Insurance Company of Illinois
Ironshore Management Inc.	Safeco Insurance Company of Indiana
Ironshore Services Inc.	Safeco Insurance Company of Oregon
Ironshore Specialty Insurance Company	Safeco Lloyds Insurance Company
Ironshore Surety Holdings Inc.	Safeco National Insurance Company
LEXCO Limited	Safeco Properties, Inc.
Liberty-USA Corporation	Safeco Surplus Lines Insurance Company
Liberty Energy Canada, Inc.	San Diego Insurance Company
Liberty Financial Services, Inc.	SCIT, Inc.
Liberty Insurance Corporation	State Auto Financial Corporation
Liberty Insurance Holdings, Inc.	State Auto Holdings, Inc.
Liberty Insurance Underwriters Inc.	State Auto Insurance Company of Ohio
Liberty International Holdings Inc.	State Auto Insurance Company of Wisconsin
Liberty Life Holdings Inc.	State Auto Labs Corp.
Liberty Lloyds of Texas Insurance Company	State Auto Property & Casualty Insurance Company
Liberty Management Services, Inc.	State Automobile Mutual Insurance Company
Liberty Mexico Holdings Inc.	Stateco Financial Services, Inc.
Liberty Mutual Agency Corporation	The First Liberty Insurance Corporation
Liberty Mutual Credit Risk Transfer PCC Inc.	The Midwestern Indemnity Company
Liberty Mutual Fire Insurance Company	The National Corporation
Liberty Mutual Group Asset Management Inc.	The Netherlands Insurance Company
Liberty Mutual Group Inc.	The Ohio Casualty Insurance Company
Liberty Mutual Holding Company Inc.	Wausau Business Insurance Company
Liberty Mutual Insurance Company	Wausau General Insurance Company
Liberty Mutual Personal Insurance Company	Wausau Underwriters Insurance Company
Liberty Mutual Technology Group, Inc.	West American Insurance Company
Liberty Northwest Insurance Corporation	Winmar Company, Inc.

NOTES TO FINANCIAL STATEMENTS

Liberty Personal Insurance Company	Workgrid Software, Inc
------------------------------------	------------------------

G. The Company does not expect the Federal and Foreign income tax loss contingencies, as determined in accordance with SSAP No. 5R, Liabilities, Contingencies and Impairments of Assets, with the modifications provided in SSAP No. 101, Income Taxes – A Replacement of SSAP No. 10R and SSAP No. 10, to significantly increase within twelve months of the reporting date.

H. Not applicable.

I. Alternative Minimum Tax Credit

	<u>Amount</u>	
(1) Gross AMT Credit Recognized as:		
a. Current year recoverable	\$	0
b. Deferred tax asset (DTA)	\$	0
(2) Beginning Balance of AMT Credit Carryforward	\$	0
(3) Amounts Recovered	\$	0
(4) Adjustments	\$	0
(5) Ending Balance of AMT Credit Carryforward (5=2-3-4)	\$	0
(6) Reduction for Sequestration	\$	0
(7) Nonadmitted by Reporting Entity	\$	0
(8) Reporting Entity Ending Balance (8=5-6-7)	\$	0

On August 16, 2022, the U.S. enacted the Inflation Reduction Act (the "IRA"). For tax years beginning after December 31, 2022, the IRA imposes a new corporate alternative minimum tax (the "CAMT") on applicable corporations with average adjusted financial statement income in excess of \$1 billion for the three prior tax years. Based on the guidance currently available, Liberty Mutual Holding Company Inc. and subsidiaries, the controlled group of corporations which the Company is a member of, expects to be an applicable corporation subject to the CAMT in 2023. Therefore, the controlled group will perform the necessary CAMT calculations in order to determine whether or not it will have a CAMT liability for the tax year 2023. The 2022 financial statements do not include an estimated impact of the CAMT, because a reasonable estimate cannot be made.

10. Information Concerning Parent, Subsidiaries, Affiliates and Other Related Parties

A. All the outstanding shares of capital stock of the Company are held by Liberty Mutual Insurance Company ("LMIC"), a Massachusetts insurance company. LMIC is wholly owned by Liberty Mutual Group Inc. The ultimate parent of LMIC is Liberty Mutual Holding Company Inc. ("LMHC"), a Massachusetts company.

B. There are no transactions between the Company and its affiliates are listed on Schedule Y Part 2.

C. Transactions with related party who are not reported on Schedule Y

D. Not Applicable

At December 31, 2022, the Company reported a net \$(11,820,573) due from affiliates. In general, the terms of the intercompany arrangements require settlement at least quarterly.

E. Refer to Note 26 for information regarding the Inter-Company Reinsurance Agreement.

The Company is a party to a management services agreement (the "Agreement") with Liberty Mutual Insurance Company ("LMIC"). Under the Agreement, LMIC may provide the Company with office space, supplies, equipment, telephone and wire services, the use of computers and similar machines and services of personnel employed by LMIC and LMGI. Services provided include, but are not limited to, risk underwriting, claims processing, claims adjustments, policyholder services, contract management and administration. LMIC is reimbursed for the cost of all services which it provides under the Agreement.

The Company is a party to a cash management agreement with Liberty Mutual Insurance Company ("LMIC") whereby LMIC provides services to the Company.

The Company is a party to an investment management agreement with Liberty Mutual Group Asset Management Inc. ("LMGAM"). Under the agreement, LMGAM provides services to the Company.

The Company is a party to an Agency Agreement with Comparion Insurance Agency, LLC ("CIA") whereby CIA is appointed a property-casualty insurance agent of the Company and provides usual and customary services of an insurance agent on all insurance contracts placed by CIA with the Company.

The Company is a party to an Agency Agreement with Helmsman Insurance Agency LLC ("HIA") whereby HIA is appointed a property-casualty insurance agent of the Company and provides usual and customary services of an insurance agent on all insurance contracts placed by HIA with the Company.

The Company is a party to a Federal Tax Sharing Agreement between LMHC and affiliates (Refer to Note 9F).

The Company paid \$257,594 under the LMHC Tax Sharing Agreement and paid \$ 139,092 under the LMGAM investment management agreement. Pursuant to the Inter Company Reinsurance Agreement with LMIC (Refer to Note 26), the expenses incurred under the Liberty Mutual service agreement are allocated to the Company in accordance with the Company's "Pool" participation percentage.

F. The Company has not made any guarantees or initiated any undertakings, written or otherwise, for the benefit of affiliates or other related parties

G. The Company is a member of a holding company structure as illustrated in Schedule Y Part 1.

H. The Company does not own shares of any upstream intermediate or ultimate parent, either directly or indirectly via a downstream subsidiary, controlled or affiliated company

NOTES TO FINANCIAL STATEMENTS

- I. The Company does not own investments in subsidiary, controlled or affiliated companies.
- J. The Company did not recognize any impairment write down for its SCA companies during the statement period
- K. The Company does not use CARVM in calculating its investment in its foreign subsidiaries.
- L. The Company does not hold any investments in downstream non-insurance holding companies.

M. All SCA Investments

Not Applicable

N. Investment in Insurance SCAs

Not Applicable

O. SCA or SSAP No. 48 Entity Loss Tracking

Not Applicable

11. Debt

A. Debt (Including Capital Notes)

The Company has no debt, including capital notes.

B. FHLB (Federal Home Loan Bank) Agreements

- (1) Not applicable.
- (2) FHLB Capital Stock

a. Aggregate Totals

1. Current Year

	(1) Total 2+3	(2) General Account	(3) Protected Cell Accounts
(a) Membership Stock - Class A	\$ 0	0	0
(b) Membership Stock - Class B	\$ 0	0	0
(c) Activity Stock	\$ 0	0	0
(d) Excess Stock	\$ 0	0	0
(e) Aggregate Total (a + b + c + d)	\$ 0	0	0
(f) Actual or est. Borrowing Capacity as Determined by the Insurer	\$ 0	X X X	X X X

2. Prior Year-end

	(1) Total 2+3	(2) General Account	(3) Protected Cell Accounts
(a) Membership Stock - Class A	\$ 0	0	0
(b) Membership Stock - Class B	\$ 0	0	0
(c) Activity Stock	\$ 0	0	0
(d) Excess Stock	\$ 0	0	0
(e) Aggregate Total (a + b + c + d)	\$ 0	0	0
(f) Actual or est. Borrowing Capacity as Determined by the Insurer	\$ 0	X X X	X X X

b. Membership Stock (Class A and B) Eligible and Not Eligible for Redemption

	1 Current Year Total (2 + 3 + 4 + 5 + 6)	2 Not Eligible for Redemption	Eligible for Redemption			
			3 Less Than 6 Months	4 6 Months to Less Than 1 Year	5 1 to Less Than 3 Years	6 3 to 5 Years
1. Class A	\$ 0	0	0	0	0	0
2. Class B	\$ 0	0	0	0	0	0

(3) Collateral Pledged to FHLB

a. Amount Pledged as of Reporting Date

	1 Fair Value	2 Carrying Value	3 Aggregate Total Borrowing
1. Current Year Total General and Protected Cell (Lines 2 + 3)	\$ 0	0	0
2. Current Year General Account (Total Pledged)	\$ 0	0	0
3. Current Year Protected Cell (Total Pledged)	\$ 0	0	0
4. Prior Year-end Total General and Protected Cell (Total Pledged)	\$ 0	0	0

NOTES TO FINANCIAL STATEMENTS

b. Maximum Amount Pledged During Reporting Period

	1	2	3
	Fair Value	Carrying Value	Amount Borrowed at Time of Max. Collateral
1. Current Year Total General and Protected Cell (Lines 2 + 3)	\$ 0	0	0
2. Current Year General Account (Maximum Pledged)	\$ 0	0	0
3. Current Year Protected Cell (Maximum Pledged)	\$ 0	0	0
4. Prior Year-end Total General and Protected Cell (Maximum Pledged)	\$ 0	0	0

(4) Borrowing From FHLB

a. Amount as of the Reporting Date

1. Current Year

	1	2	3	4
	Total 2+3	General Account	Protected Cell Account	Funding Agreements Reserves Established
(a) Debt	\$ 0	0	0	X X X
(b) Funding Agreements	\$ 0	0	0	0
(c) Other	\$ 0	0	0	X X X
(d) Aggregate Total (a + b + c)	\$ 0	0	0	0

2. Prior Year-end

	1	2	3	4
	Total 2+3	General Account	Protected Cell Account	Funding Agreements Reserves Established
(a) Debt	\$ 0	0	0	X X X
(b) Funding Agreements	\$ 0	0	0	0
(c) Other	\$ 0	0	0	X X X
(d) Aggregate Total (a + b + c)	\$ 0	0	0	0

b. Maximum Amount during Reporting Period (Current Year)

	1	2	3
	Total 2+3	General Account	Protected Cell Accounts
1. Debt	\$ 0	0	0
2. Funding Agreements	\$ 0	0	0
3. Other	\$ 0	0	0
4. Aggregate Total (1 + 2 + 3)	\$ 0	0	0

c. FHLB- Prepayment Obligations

	Does the company have prepayment obligations under the following arrangements (YES/NO)?
1. Debt	
2. Funding Agreements	
3. Other	

c.

There were no outstanding borrowings as of December 31, 2022.

12. Retirement Plans, Deferred Compensation, Postemployment Benefits and Compensated Absences and Other Postretirement Benefit Plans

A. Defined Benefit Plans

The Company does not have any direct employees and therefore, does not have any direct obligations for a defined benefit plan, deferred compensation arrangements, compensated absences or other postretirement benefit plans. Services for the operation of the Company are provided under provisions of the management services agreements, as described in Note 10F.

Overfunded		Underfunded	
2022	2021	2022	2021

NOTES TO FINANCIAL STATEMENTS

(1) Change in benefit obligation:					
a. Pension Benefits					
1. Benefit obligation at beginning of year	\$	0	0	0	0
2. Service cost	\$	0	0	0	0
3. Interest cost	\$	0	0	0	0
4. Contribution by plan participants	\$	0	0	0	0
5. Actuarial gain (loss)	\$	0	0	0	0
6. Foreign currency exchange rate changes	\$	0	0	0	0
7. Benefits paid	\$	0	0	0	0
8. Plan amendments	\$	0	0	0	0
9. Business combinations, etc.	\$	0	0	0	0
10. Benefit obligation at end of year	\$	0	0	0	0
b. Postretirement Benefits					
1. Benefit obligation at beginning of year	\$	0	0	0	0
2. Service cost	\$	0	0	0	0
3. Interest cost	\$	0	0	0	0
4. Contribution by plan participants	\$	0	0	0	0
5. Actuarial gain (loss)	\$	0	0	0	0
6. Foreign currency exchange rate changes	\$	0	0	0	0
7. Benefits paid	\$	0	0	0	0
8. Plan amendments	\$	0	0	0	0
9. Business combinations, etc.	\$	0	0	0	0
10. Benefit obligation at end of year	\$	0	0	0	0
c. Special or Contractual Benefits Per SSAP No. 11					
1. Benefit obligation at beginning of year	\$	0	0	0	0
2. Service cost	\$	0	0	0	0
3. Interest cost	\$	0	0	0	0
4. Contribution by plan participants	\$	0	0	0	0
5. Actuarial gain (loss)	\$	0	0	0	0
6. Foreign currency exchange rate changes	\$	0	0	0	0
7. Benefits paid	\$	0	0	0	0
8. Plan amendments	\$	0	0	0	0
9. Business combinations, etc.	\$	0	0	0	0
10. Benefit obligation at end of year	\$	0	0	0	0

	Pension Benefits		Postretirement Benefits		Special or Contractual Benefits Per SSAP No. 11	
	2022	2021	2022	2021	2022	2021
(2) Change in plan assets:						
a. Fair value of plan assets beginning of year	\$	0	0	0	0	0
b. Actual return on plan assets	\$	0	0	0	0	0
c. Foreign currency exchange rate changes	\$	0	0	0	0	0
d. Reporting Entity contribution	\$	0	0	0	0	0
e. Plan participants contributions	\$	0	0	0	0	0
f. Benefits paid	\$	0	0	0	0	0
g. Business combinations, etc.	\$	0	0	0	0	0
h. Fair value of plan assets end of year	\$	0	0	0	0	0

(3) Funded status:					
a. Components:					
1. Prepaid benefit costs	\$	0	0	0	0
2. Overfunded plan assets	\$	0	0	0	0
3. Accrued benefit costs	\$	0	0	0	0
4. Liability for pension benefits	\$	0	0	0	0
b. Assets and liabilities recognized					
1. Assets (nonadmitted)	\$	0	0	0	0
2. Liabilities recognized	\$	0	0	0	0
c. Unrecognized liabilities	\$	0	0	0	0

NOTES TO FINANCIAL STATEMENTS

	Pension Benefits		Postretirement Benefits		Special or Contractual Benefits Per SSAP No. 11	
	2022	2021	2022	2021	2022	2021
(4) Components of net periodic benefit cost:						
a. Service cost	\$ 0	0	0	0	0	0
b. Interest cost	\$ 0	0	0	0	0	0
c. Expected return on plan assets	\$ 0	0	0	0	0	0
d. Transition asset or obligation	\$ 0	0	0	0	0	0
e. Gains and losses	\$ 0	0	0	0	0	0
f. Prior Service cost or credit	\$ 0	0	0	0	0	0
g. Gain or loss recognized due to a settlement or curtailment	\$ 0	0	0	0	0	0
h. Total net periodic benefit cost	\$ 0	0	0	0	0	0
i. ERP P&L Charge	\$ 0	0	0	0	0	0
j. Total net periodic benefit cost	\$ 0	0	0	0	0	0

	Pension Benefits		Postretirement Benefits	
	2022	2021	2022	2021
(5) Amounts in unassigned funds (surplus) recognized as components of net periodic benefit cost:				
a. Items not yet recognized as a components of net period cost - prior year	\$ 0	0	0	0
b. Net transition asset or obligation recognized	\$ 0	0	0	0
c. Net prior service cost or credit arising during the period	\$ 0	0	0	0
d. Net prior service cost of credit recognized	\$ 0	0	0	0
e. Net gain and loss arising during the period	\$ 0	0	0	0
f. Net gain and loss recognized	\$ 0	0	0	0
g. Items not yet recognized as a component of net periodic cost - current year	\$ 0	0	0	0

	Pension Benefits		Postretirement Benefits	
	2022	2021	2022	2021
(6) Amounts in unassigned funds (surplus) expected to be recognized in the next fiscal year as components of net periodic benefit cost:				
a. Net transition asset or obligation	\$ 0	0	0	0
b. Net prior service cost or credit	\$ 0	0	0	0
c. Net recognized gains and losses	\$ 0	0	0	0

(7) Weighted-average assumptions used to determine net periodic benefit costs as of Dec. 31:		
a. Weighted average discount rate	0.000	0.000
b. Expected long-term rate of return on plan assets	0.000	0.000
c. Rate of compensation increase	0.000	0.000
d. Interest crediting rates (for cash balance plans and other plans with promised interest crediting rates)	0.000	0.000
Weighted-average assumptions used to determine projected benefit obligations as of Dec. 31:		
e. Weighted average discount rate	0.000	0.000
f. Rate of compensation increase	0.000	0.000
g. Interest crediting rates (for cash balance plans and other plans with promised interest crediting rates)	0.000	0.000

(8) Not applicable.

(9) Not applicable.

(10) The following estimated future payments, which reflect expected future service, as appropriate, are expected to be paid in the years indicated:

2023	\$ 0
2024	\$ 0
2025	\$ 0
2026	\$ 0
2027	\$ 0
2028 thru 2032	\$ 0

B.

(1) Information about Plan Assets

Not applicable.

C.

(1) Fair Value Measurements at December 31, 2022

Not Applicable

D. Narrative description of expected long term rate of return assumption

Not Applicable

E. Defined Contribution Plan

Not Applicable

F. Multiemployer Plans

Not Applicable

NOTES TO FINANCIAL STATEMENTS

G. Consolidated/Holding Company Plans

Not Applicable

H. Postemployment benefits and Compensated Absences

Not Applicable

I. Impact of Medicare Modernization Act on Postretirement Benefits (INT 04-

Not Applicable

13 Capital and Surplus, Dividend Restrictions and Quasi-Reorganizations

A. The Company has 20,000 shares authorized, and 11,250 shares issued and outstanding as of December 31, 2022. All shares have a stated par value of \$400.

B. Preferred Stock

Not applicable.

C. There are no dividend restrictions.

D. The Company did not pay any dividend to its parent in 2022.

--	--	--

E. The maximum amount of dividends that can be paid by Wisconsin-domiciled insurance companies to shareholders without prior approval of the Insurance Commissioner is the lesser of (a) 10% of surplus, or the greater of (b) or (c); (b) net income for calendar year preceding date of dividend less realized gains for that calendar year, or (c) the aggregate of net income for three calendar years preceding the date of dividend less realized gains for those calendar years less dividends paid/credited within the first two of the preceding three calendar years. The maximum dividend payout that may be made without prior approval in 2023 is \$ 4,119,271.

F. The Company does not have restricted unassigned surplus.

G. The Company had no advances to surplus.

H. The Company does not hold stock for special purposes.

I. The Company does not hold special surplus funds.

J. The portion of unassigned funds (surplus) represented or reduced by cumulative unrealized gains and losses:

\$ 0

Not Applicable

K. The company issued the following surplus debentures or similar obligations:

Not Applicable

L. The impact of any restatement due to prior quasi-reorganizations is as follows:

Not Applicable

M. Not applicable.

14. Liabilities, Contingencies and Assessments

A. Contingent Commitments

Refer to Note 10E

(Total SSAP No. 97 - Investments in Subsidiary
Partnerships and Limited Liability Companies \$ 0

NOTES TO FINANCIAL STATEMENTS

c. Number of Jurisdictions, Ranges of Years Used to Discount and Weighted Average Number of Years on the Discountin Period for Payables and Recoverables by Insolvency:

Name of the Insolvency	Payables			Recoverables		
	Number of Jurisdicti	Range of Years	Weighted Average Number of Years	Number of Jurisdictions	Range of Year	Weighted Avera Number of Years

C. Gain Contingencies

Not Applicable

D. Claims related extra contractual obligations and bad faith losses stemming from lawsuits

Claims related ECO and bad faith losses paid during the reporting period \$ 15,000

Number of claims where amounts were paid to settle claims related extra contractual obligations or bad faith claims resulting from lawsuits during the reporting period: (a) 0-25 claims (b) 26-50 claims (c) 51-100 claims (d) 101-500 claims (e) More than 500 claims

Answer (A, B, C, D, or E): A

Indicate whether claim count information is disclosed (f) per claim or (g) per claimant
 Answer (F or G): F

E. Product Warranties

Not Applicable

F. Joint and Several Liabilities

The Company is not a participant in any joint and several liabilities.

G. All Other Contingencies

Lawsuits arise against the Company in the normal course of business. Contingent liabilities arising from litigation, income taxes, and other matters are not considered material in relation to the financial position of the Company.

As disclosed in Note 9 F, the Company is a member of a controlled group for federal income tax purposes, and that group includes LMGI. LMGI is the plan sponsor of the Liberty Mutual Retirement Benefit Plan, a qualified plan under federal law. Pursuant to federal law, if LMGI has not made the minimum required contributions with respect to the Liberty Mutual Retirement Benefit Plan, the Company, jointly and severally with all other members of the controlled group, would be contingently liable to make such contributions

15. Leases.

A. Lessee Leasing Arrangements

The Company has no net lease obligations. Refer to Note 26.

(1)

- a. Not applicable
- b. Not applicable
- c. Not applicable

(2)

- a. At December 31, 2023, the minimum aggregate rental commitments are as follows:

(Dollars in thousands) Operating Leases

Year Ending December 31 Operating Leases		
2023 (as seen in Notes text)	\$	0
2024 (as seen in Notes text)	\$	0
2025 (as seen in Notes text)	\$	0
2026 (as seen in Notes text)	\$	0
2027 (as seen in Notes text)	\$	0
2028 & thereafter	\$	0
Total	\$	0

B. Lessor Leases

- (1) Operating Leases

NOTES TO FINANCIAL STATEMENTS

a. Leasing is not a significant part of the Company's business activities.

c. Future minimum lease payment receivables under noncancelable leasing arrangements as of December 31, 2022 are as follows:

Operating Leases

Year Ending December 31

2023 (as seen in Notes text)	\$	0
2024 (as seen in Notes text)	\$	0
2025 (as seen in Notes text)	\$	0
2026 (as seen in Notes text)	\$	0
2027 (as seen in Notes text)	\$	0
2028 & thereafter	\$	0
Total	\$	0

(2) Leveraged Leases

b. The Company's investment in leveraged leases relates to equipment...
Dec. 31, 2022 were as shown below: (In thousands)

2022 2021
(years as seen in Notes text)

Income from leveraged leases before income tax including investment tax credit	\$	0	0
Less current income tax	\$	0	0
Net income from leverage leases	\$	0	0

c. The components of the investment in leveraged leases at
Dec. 31, 2022 and Dec. 31, 2021 were as shown below: (In thousands)

2022 2021
(years as seen in Notes text)

Lease contracts receivable (net principal & interest non-recourse financing)	\$	0	0
Estimated residual value of leased assets	\$	0	0
Unearned and deferred income	\$	0	0
Investment in leveraged leases	\$	0	0
Deferred income taxes related to leveraged leases	\$	0	0
Net investment in leveraged leases	\$	0	0

16. Information About Financial Instruments With Off-Balance Sheet Risk And Financial Instruments With Concentrations of Credit Risk

The Company is not exposed to financial instruments with off-balance sheet risk or concentration of credit risk.

(1) The table below summarizes the face amount of the Company's financial instruments with off-balance-sheet risk.

	<u>ASSETS</u>		<u>LIABILITIES</u>	
	2022	2021	2022	2021
	(years as seen in Notes text)		(years as seen in Notes text)	
a. Swaps	\$ 0	0	0	0
b. Futures	\$ 0	0	0	0
c. Options	\$ 0	0	0	0
d. Totals	\$ 0	0	0	0

See Schedule DB of the Company's annual statement for additional detail.

(2) Not applicable

(3) Not applicable

(4) Not applicable

17. Sale, Transfer and Servicing of Financial Assets and Extinguishments of Liabilities

A. Transfers of Receivables Reported as Sales

(1) Not Applicable.

(2) Not Applicable

B. Transfers and Servicing of Financial Assets

The Company participates in a Securities Lending Program to generate additional income, whereby certain fixed income and mortgage backed securities are loaned for a period of time from the Company's portfolio to qualifying third parties, via a lending agent. The company does not participate in term loans; therefore, the company does not have contractual collateral transactions that extend beyond one year from the reporting date. Borrowers of these securities provide collateral equal to or in excess of 102% of the market value of the loaned securities. Acceptable collateral may be in the form of cash or U.S. Government securities, such as Treasuries and Agency Bonds. The market value of the loaned securities is monitored and additional collateral is obtained if the market value of the collateral falls below 102% of the market value of the loaned securities. Additionally, the lending agent indemnifies the Company against borrower defaults. Cash collateral is carried as an asset with an offsetting liability on the balance sheet, as the collateral is unrestricted and the Company can exercise discretion as to how the collateral is invested. The loaned securities remain a recorded asset of the Company. At December 31, 2021

(1) the total fair value of securities on loan was \$ 8,681,324 with corresponding collateral value of \$ 8,856,765 of which \$ 4,588,083 represents cash collateral that was reinvested.

NOTES TO FINANCIAL STATEMENTS

1 Identification of Transaction	2 BACV at Time of Transfer	3 Original Reporting Schedule of the Transferred Assets	4 Amount Derecognized from Sale Transaction	5 Amount that Continues to be recognized in the Statement of Financial position (Col.2 minus 4)	6 BACV of acquired interest in transferred assets	7 Reporting Schedule of Acquired Interests	8 Percentage of interests of a reporting entity's transferred asset acquired by Affiliated entities

C. Wash Sales:

- (1) Not Applicable.
- (2) Details by NAIC designation 3 or below of securities sold during the year ended, December 31, 2022 and reacquired within 30 days of the sale date are:

Description	NAIC Designation*	Number of Transactions	Book Value of Securities Sold	Cost of Securities Repurchased	Gain (Loss)

* The NAIC Designation Column should indicate 3 through 6 or "U" for Unrated

18. Gain or Loss to the Reporting Entity from Uninsured Plans and the Uninsured Portion of Partially Insured Plans

Not Applicable

19. Direct Premium Written/Produced by Managing General Agents/Third Party Administrators

The Company has no direct premiums written or produced through managing general agents or third party administrators.

20. Fair Value Measurements

A. Inputs Used for Assets and Liabilities Measured at Fair Value

Pursuant to the guidance in SSAP No. 100, Fair Value Measurements, the Company carries no assets or liabilities on its balance sheet measured at fair value.

- (1) Fair Value Measurements at Reporting Date

(1) Description	(2) (Level 1)	(3) (Level 2)	(4) (Level 3)	(6) Net Asset Value	(7) Total
a. Assets at fair Value					
b. Liabilities at fair value					

- (2) Fair Value Measurements in (Level 3) of the Fair Value Hierarchy

	(1)	(2)	(3)	(4)	(5)	(6)	(7)	(8)	(9)	(10)
Assets:	Beginning Balance at 01/01/2022	Transfers in- to Level 3 (a)	Transfers out of Level 3 (b)	Total gains and (losses) included in Net income	Total gains and (losses) included in Surplus	Purchases	Issuances	Sales	Settlements	Ending Balance at 12/31/2022
Total	\$ 0	0	0	0	0	0	0	0	0	0

NOTES TO FINANCIAL STATEMENTS

	(1)	(2)	(3)	(4)	(5)	(6)	(7)	(8)	(9)	(10)
Beginning Balance at 01/01/2022				Total gains and (losses) included in Net income	Total gains and (losses) included in Surplus					Ending Balance at 12/31/2022
Liabilities:		Transfers in- to Level 3 (a)	Transfers out of Level 3 (b)			Purchases	Issuances	Sales	Settlements	
Total	\$ 0	0	0	0	0	0	0	0	0	0

B. Other Fair Value Disclosures

Not Applicable

C. Aggregate Fair Value of All Financial Instruments

Type of Financial Instrument	Aggregate Fair Value	Admitted Assets	(Level 1)	(Level 2)	(Level 3)	Net Asset Value (NAV)	Not Practicable (Carrying Value)
01 Cash, Cash Equivalents & Short Term	\$ 4,338,519	4,338,276	0	2,376,373	0	1,962,146	0
02 Bonds	\$ 66,384,654	71,702,593	28,839,070	37,545,583	0	0	0
03 Preferred Stock	\$ 0	0	0	0	0	0	0
04 Common Stock	\$ 0	0	0	0	0	0	0
05 Securities Lending	\$ 4,588,469	4,588,083	0	4,588,469	0	0	0
06 Mortgage Loans	\$ 0	0	0	0	0	0	0
07 Surplus Notes	\$ 0	0	0	0	0	0	0
09 Net Derivatives	\$ 0	0	0	0	0	0	0
Total	\$ 75,311,642	80,628,952	28,839,070	44,510,425	0	1,962,146	0

D. Reasons Not Practical to Estimate Fair Value

Not Applicable

E. Instruments Measures at Net Asset Value (NAV)

The Company elected to use NAV for all money market mutual funds in lieu of fair value as NAV is more readily available. These funds are backed by high quality, very liquid short-term instruments and the probability is remote that the funds would be sold for a value other than NAV.

21. Other items

A. Unusual or Infrequent Items

The Company has no unusual or infrequent items to report.

B. Troubled Debt Restructuring

Not Applicable

C. Other Disclosures

1. The Company cedes 100% of its business to Liberty Mutual Insurance Company, the lead company in the Liberty Mutual Pool. Liberty Mutual Insurance Company purchases external catastrophe reinsurance coverage.

Interrogatory 6.2

As a member of the Liberty Intercompany Pool, the Pool employs industry recognized catastrophe modeling software to estimate the Probable Maximum Loss. For property exposures, we utilize RMS's RiskLink v15.0 and AIR's Touchstone v3.1 software. For workers' compensation, Liberty Mutual utilizes RiskLink v15.0 from RMS.

Interrogatory 6.3

The Company cedes 100% of its business to Liberty Mutual Insurance Company, the lead company in the Liberty Mutual Pool. Liberty Mutual Insurance Company purchases external catastrophe reinsurance coverage.

2. Florida Special Disability Trust Fund

- a. The Company took a credit in the determination of its loss reserves of \$2,179,175 in 2022 and \$2,179,141 in 2021.
- b. The Company received payments from the Special Disability Trust Fund of \$0 in 2022 and \$243,685 in 2021.
- c. The amount the Company was assessed by the Special Disability Trust Fund was \$44 in 2022 and \$204 in 2021.

D. Business Interruption Insurance Recoveries

Not Applicable

E. State Transferable and Non-transferable Tax Credits

(1) Description of State Transferrable Tax Credits

The Company does not hold state transferable and/or non-transferable tax credits.

NOTES TO FINANCIAL STATEMENTS

(1) Description of State Transferable Tax Credits	State	Carrying Value	Unused Amount
.....			

(2) Method of Estimating Utilization of Remaining Transferable and Non-transferable State Tax Credits

(3) Impairment Loss

(4) State Tax Credits Admitted and Nonadmitted	Total Admitted	Total Non-Admitted
a. Transferable	0	0
b. Non-transferable	0	0

F. Subprime-Mortgage-Related Risk Exposure

Not Applicable

G. Insurance-Linked Securities (ILS) Contracts

Not Applicable

H. The Amount That Could Be Realized on Life Insurance Where the Reporting Entity is Owner and Beneficiary or Has Otherwise Obtained Rights to Control the Policy

Not Applicable

22. Events Subsequent

The Company evaluated subsequent events through February 23, 2023, the date the annual statement was available to be issued.

There were no events subsequent to December 31, 2022 that would require disclosure.

The Company did not receive any assessments under the Affordable Care Act.

23. Reinsurance

A. Unsecured Reinsurance Recoverables

Excluding amounts arising pursuant to the Intercompany Reinsurance Agreements, there are no unsecured reinsurance recoverables with an individual reinsurer which exceed 3% of policyholder's surplus.

.....			
-------	--	--	--

B. Reinsurance Recoverable in Dispute

Not Applicable

C. REINSURANCE ASSUMED AND CEDED

(1) Report the maximum amount of return commission which would have been due reinsurers....

	Assumed		Ceded		Net	
	Premium Reserve (1)	Commission Equity (2)	Premium Reserve (3)	Commission Equity (4)	Premium Reserve (5)	Commission Equity (6)
a. Affiliates	\$ 0	0	167,000,716	0	(167,000,716)	0
b. All Other	\$ 2	0	0	0	2	0
c. TOTAL	\$ 2	0	167,000,716	0	(167,000,714)	0
d. Direct Unearned Premium Reserve	\$ 0					

Line (c) of Column 3 must Equal page 3, Line 9, first inside amt.

(2) Additional or return commission ... on any form of profit sharing arrangements

The Company has no contingent commissions, sliding scale, or other profit sharing commissions for direct, assumed or ceded business.

REINSURANCE

	Direct	Assumed	Ceded	Net
a. Contingent Commission	\$ 0	0	0	0
b. Sliding Scale Adjustments	\$ 0	0	0	0
c. Other Profit Commission Arrangements	\$ 0	0	0	0
d. TOTAL	\$ 0	0	0	0

(3) Reinsurance

<u>Protected Cell Name</u>	<u>Covered Exposure</u>	<u>Ultimate Exposure Amt</u>	<u>Fair Value of Assets 12/31</u>	<u>Initial Contract Date</u>	<u>Maturity Date</u>
.....					
		0	0		

Totals Lines 23C0301 through 23C0305

NOTES TO FINANCIAL STATEMENTS

D. UNCOLLECTIBLE REINSURANCE

The Company did not write off any uncollectible balances in the current year.

(1) The company has written off in the current year reinsurance balances due (from the companies listed below) in the amount of 0 which is reflected as:

a.	Losses incurred	\$	0
b.	Loss adjustment expenses incurred	\$	0
c.	Premiums earned	\$	0
d.	Other	\$	0

e.

Company	Amount

E. COMMUTATION OF CEDED REINSURANCE

The Company did not commute any reinsurance treaties in the current year.

The company has reported in its operations in the current year as a result of commutation of reinsurance with the companies listed below, amounts that are reflected as:

(1)	Losses Incurred	\$	0
(2)	Loss adjustment expenses incurred	\$	0
(3)	Premiums Earned	\$	0
(4)	Other	\$	0

(5)

Company	Amount

F. RETROACTIVE REINSURANCE

The Company does not have any retroactive reinsurance agreements.

(1)

		Reported Company	
As:		Assumed	Ceded
a. Reserves Transferred:			
1.	Initial Reserves	\$	0
2.	Adjustments - Prior Year(s)	\$	0
3.	Adjustments - Current Year	\$	0
4.	Current Total	\$	0
b. Consideration Paid or Received:			
1.	Initial Consideration	\$	0
2.	Adjustments - Prior Year(s)	\$	0
3.	Adjustments - Current Year	\$	0
4.	Current Total	\$	0
c. Paid Losses Reimbursed or Recovered:			
1.	Prior Year(s)	\$	0
2.	Current Year	\$	0
3.	Current Total	\$	0
d. Special Surplus from Retroactive Reinsurance:			
1.	Initial Surplus Gain or Loss	\$	0
2.	Adjustments - Prior Year(s)	\$	0
3.	Adjustments - Current Year	\$	0
4.	Current Year Restricted Surplus	\$	0
5.	Cumulative Total Transferred to Unassigned Funds	\$	0
e. All cedents and reinsurers involved in all transactions included in summary totals above:			

NOTES TO FINANCIAL STATEMENTS

Column 1: Cedents and Reinsurers Company Name	Assumed Amt	Ceded Amt
.....
Total*	\$ 0	0

* Total amounts must agree with totals in a. 4 above. Include the NAIC Company Code or Alien Insurer Identification Number for each insurer listed.

f.

1. Total Paid Loss/LAE amounts recoverable (for authorized, una and certified reinsurers), and for amounts recoverable the colle (for authorized, unauthorized and certified reinsurers) as respects amounts recoverable from unauthorized reinsurers:

Authorized Reinsurers Total: Company Name	Total Paid/Loss/L Recoverable	Amount over 90 days overdue
.....
Total	\$ 0	0

2. Total Paid Loss/LAE amounts recoverable (for authorized, una and certified reinsurers), and for amounts recoverable the colle (for authorized, unauthorized and certified reinsurers) as respects amounts recoverable from unauthorized reinsurers:

Unauthorized Reinsurers Total: Company Name	Total Paid/Loss/L Recoverable	Amt over 90 Days Overdue	Collateral Held
.....
Total	\$ 0	0	0

3. Total Paid Loss/LAE amounts recoverable (for authorized, una and certified reinsurers), and for amounts recoverable the colle (for authorized, unauthorized and certified reinsurers) as respects amounts recoverable from unauthorized reinsurers:

Certified Reinsurers Total: Company Name	Total Paid/Loss/L Recoverable	Amt over 90 Days Overdue	Collateral Held
.....
Total	\$ 0	0	0

4. Total Paid Loss/LAE amounts recoverable (for authorized, una and certified reinsurers), and for amounts recoverable the colle (for authorized, unauthorized and certified reinsurers) as respects amounts recoverable from unauthorized reinsurers:

.....	Total Paid/Loss/L	Amt over 90
.....
Total	\$ 0	0

G. Reinsurance Accounted for as a Deposit

The Company has not entered into any reinsurance agreements that have been accounted for as deposits as of December 31, 2022.

H. Disclosures for the Transfer of Property and Casualty Run-off Agreements

The Company has not entered into any agreements which have been approved by their domiciliary regulator and have qualified pursuant to SSAP No. 62R, Property and Casualty Reinsurance to receive P&C Run-off Accounting Treatment.

I. Certified Reinsurer Rating Downgraded or Status Subject to Revocation

- (1) Reporting Entity Ceding to Certified Reinsurer Whose Rating Was Downgraded or Status Subject to Revocation

a.

Name of Certified Reinsurer	Relationship to Reporting Entity	Date of Action	Jurisdiction of Action	Collateral Percentage Requirement		Net Obligation Subject to Collateral	Collateral Required (but not Received)
				Before	After		
.....

- b. The Company does not transact business with Certified Reinsurers.

- (2) Reporting Entity's Certified Reinsurer Rating Downgraded or Status Subject to Revocation

a.

Date of Action	Jurisdiction of Action	Collateral Percentage Requirement		Net Obligation Subject to Collateral	Collateral Required (but not Received)
		Before	After		
.....

NOTES TO FINANCIAL STATEMENTS

b. The Company is not a Certified Reinsurer.

J. Reinsurance Agreements Qualifying for Reinsurer Aggregation

(1) The Counterparty reporting party does not apply to the Company.

(2) The amount of unexhausted limit as of the reporting date.

	Amount of Unexhausted Limit
Name of Reinsurer	

24. Retrospectively Rated Contracts & Contracts Subject to Redetermination

A. The Company does not have net accrued retrospective premiums. Refer to Note 26.

B. The Company does not have net accrued retrospective premiums. Refer to Note 26.

C. The Company does not have net accrued retrospective premiums. Refer to Note 26.

D. Medical loss ratio rebates required pursuant to the Public Health Service Act.

Not Applicable

E.

(1) For Ten Percent (10%) Method of Determining Non-admitted Retrospective Premi

Not Applicable

F. Risk-Sharing Provisions of the Affordable Care Act (ACA)

(1) Did the reporting entity write accident and health insurance premium which is subject to the Affordable Care Act risk sharing provisions (YES/NO)?

NO

The Company did not receive any assessments under the Affordable Care Act.

(2) Impact of Risk Sharing Provisions of the Affordable Care Act on Admitted Assets, Liabilities and Revenue for the Current Year.

a. Permanent ACA Risk Adjustment Program

Assets

AMOUNT

1. Premium adjustments receivable due to ACA Risk Adjustment Liabilities \$

Liabilities

2. Risk adjustment user fees payable for ACA Risk Adjustment \$

3. Premium adjustments payable due to ACA Risk Adjustment Operations (Revenue & Expense) \$

Operations (Revenue & Expense)

4. Reported as revenue in premium for accident and health contracts (written/collected) due to ACA Risk Adjustment \$

5. Reported in expenses as ACA risk adjustment user fees (incurred/paid) \$

b. Transitional ACA Reinsurance Program

Assets

1. Amounts recoverable for claims paid due to ACA Reinsurance \$

2. Amounts recoverable for claims unpaid due to ACA Reinsurance (Contra Liability) \$

3. Amounts receivable relating to uninsured plans for contributions for ACA Reinsurance \$

Liabilities

4. Liabilities for contributions payable due to ACA Reinsurance -not reported as ceded premium \$

5. Ceded reinsurance premiums payable due to ACA Reinsurance \$

NOTES TO FINANCIAL STATEMENTS

6. Liabilities for amounts held under uninsured plans contributions for ACA Reinsurance \$ 0

Operations (Revenue & Expense)

7. Ceded reinsurance premiums due to ACA Reinsurance \$ 0

8. Reinsurance recoveries (income statement) due to ACA Reinsurance payments or expected payments \$ 0

9. ACA Reinsurance contributions- not reported as ceded premium \$ 0

c. Temporary ACA Risk Corridors Program

Assets

1. Accrued retrospective premium due to ACA Risk Corridors \$ 0

Liabilities

2. Reserve for rate credits or policy experience rating refunds due to ACA Risk Corridors \$ 0

Operations (Revenue & Expense)

3. Effect of ACA Risk Corridors on net premium income (paid/received) \$ 0

4. Effect of ACA risk Corridors on change in reserves for rate credits \$ 0

Roll-forward of prior year ACA risk-sharing provisions for the following asset (gross of any nonadmission) and liability balances, along with the reason for adjustments to prior year balance.

	Accrued During the Prior Year on Business Written Before December 31 of the Prior Year		Received or Paid as of the Current Year on Business Written Before December 31 of the Prior Year		Differences		Adjustments		Unsettled of the Reporting Date		
					Prior Year Accrued Less Payments (Col 1 - 3)	Prior Year Accrued Less Payments (Col 2 - 4)	To Prior Year Balances	To Prior Year Balances	R	Cumulativ Balance from Prior Years (Col 1 - 3 + 7)	Cumulativ Balance from Prior Years (Col 2 - 4 + 8)
					5	6	7	8		9	10
	1	2	3	4	5	6	7	8	F	9	10
	Receivable	(Payable)	Receivable	(Payable)	Receivable	(Payable)	Receivable	(Payable)		Receivable	(Payable)
a. Permanent ACA Risk Adjustment Program											
1. Premium adjustments receivable	0	0	0	0	0	0	0	0	A	0	0
2. Premium adjustments (payable)	0	0	0	0	0	0	0	0	B	0	0
3. Subtotal ACA Permanent Risk Adjustment Program	0	0	0	0	0	0	0	0		0	0
b. Transitional ACA Reinsurance Program											
1. Amounts recoverable for claims paid	0	0	0	0	0	0	0	0	C	0	0
2. Amts recoverable for claims unpaid (contra liability)	0	0	0	0	0	0	0	0	D	0	0
3. Amounts receivable relating to uninsured plans	0	0	0	0	0	0	0	0	E	0	0
4. Liabilities for contributions payable due to ACA Reinsurance - not reported as ceded premium	0	0	0	0	0	0	0	0	F	0	0
5. Ceded reinsurance premiums payable	0	0	0	0	0	0	0	0	G	0	0
6. Liability for amounts held under uninsured plans	0	0	0	0	0	0	0	0	H	0	0
7. Subtotal ACA Transitional Reinsurance Program	0	0	0	0	0	0	0	0		0	0
c. Temporary ACA Risk Corridors Program											
1. Accrued retrospective premium	0	0	0	0	0	0	0	0	I	0	0
2. Reserve for rate credits or policy exp. rating refunds	0	0	0	0	0	0	0	0	J	0	0
3. Subtotal ACA Risk Corridors Program	0	0	0	0	0	0	0	0		0	0
d. Total for ACA Risk Sharing Provisions	0	0	0	0	0	0	0	0		0	0

Explanations of Adjustments

A Not applicable.

B Not applicable.

C Not applicable.

D Not applicable.

NOTES TO FINANCIAL STATEMENTS

E Not applicable.

F Not applicable.

G Not applicable.

H Not applicable.

I Not applicable.

J Not applicable.

(4 Roll-Forward of Risk Corridors Asset and Liability Balances by Progra

	Accrued During the Prior Year on Business Written Before December 31 of the Prior Year		Received or Paid as of the Current Year on Business Written Before December 31 of the Prior Year		Differences		Adjustments		Unsettled Balances as of the Reporting Date			
					Prior Year Accrued Less Payments (Col 1 - 3)	Prior Year Accrued Less Payments (Col 2 - 4)	To Prior Year Balances	To Prior Year Balances	R	Cumulative Balance from Prior Year (Cols. 1 - 3 + 7)	Cumulative Balance from Prior Year (Cols. 2 - + 8)	
					1	2	3	4	5	6	7	8
Risk Corridors Program Year	Receivable	(Payable)	Receivable	(Payable)	Receivable	(Payable)	Receivable	(Payable)	F	Receivable	(Payable)	
a. 2019												
1. Accrued retrospective premium	0	0	0	0	0	0	0	0	0	A	0	0
2. Reserve for rate credits or policy exp. rating refunds	0	0	0	0	0	0	0	0	0	B	0	0
b. 2020												
1. Accrued retrospective premium	0	0	0	0	0	0	0	0	0	C	0	0
2. Reserve for rate credits or policy exp. rating refunds	0	0	0	0	0	0	0	0	0	D	0	0
c. 2021												
1. Accrued retrospective premium	0	0	0	0	0	0	0	0	0	E	0	0
2. Reserve for rate credits or policy exp. rating refunds	0	0	0	0	0	0	0	0	0	F	0	0
d. Total for Risk Corridors	0	0	0	0	0	0	0	0	0		0	0

24E(4)d (Columns 1 through 10) should equal 24E(3)c3 (Column 1 through 10 respectively)

Explanations of Adjustments

A Not applicable.

B Not applicable.

C Not applicable.

D Not applicable.

E Not applicable.

F Not applicable.

NOTES TO FINANCIAL STATEMENTS

(5) ACA Risk Corridors Receivable as of Reporting Date

	1	2	3	4	5	6
Risk Corridors Program Year	Estimated Amount to be Filed or Final Amount Filed with CMS	Non-Accrued Amounts for Impairment or Other Reasons	Amounts received from CMS	Asset Balance (Gross of Non-admissions) (1 - 2 - 3)	Non-admitted Amount	Net Admitted Asset (4 - 5)
a. 2019	\$ 0	0	0	0	0	0
b. 2020	\$ 0	0	0	0	0	0
c. 2021	\$ 0	0	0	0	0	0
d. Total (a + b + c)	\$ 0	0	0	0	0	0

24E(5)d (Column 4) should equal 24E(3)c1 (Column 9)

24E(5)d (Column 6) should equal 24E(2)c1

25. Changes in Incurred Losses and Loss Adjustment Expenses

A. The Company has no net exposure to changes in incurred losses and loss adjustment expenses. Refer to Note 26.

26. Intercompany Pooling Arrangements

The Company is a member of the Liberty Mutual Second Amended and Restated Intercompany Reinsurance Agreement consisting of the following affiliated companies:

		NAIC Company Number	Pooling Companies	Line of Business
Lead Company:	Liberty Mutual Insurance Company ("LMIC")	23043	50.00%	All Lines
Affiliated	Peerless Insurance Company ("PIC")	24198	20.00%	All Lines
Pool Companies:	Employers Insurance Company of Wausau ("EICOW")	21458	8.00%	All Lines
	Liberty Mutual Fire Insurance Company ("LMFIC")	23035	8.00%	All Lines
	The Ohio Casualty Insurance Company ("OCIC")	24074	8.00%	All Lines
	Safeco Insurance Company of America ("SICOA")	24740	6.00%	All Lines
	American Compensation Insurance Company ("ACI")	45934	0.00%	All Lines
	American Economy Insurance Company ("AEIC")	19690	0.00%	All Lines
	America First Insurance Company ("AFIC")	12696	0.00%	All Lines
	America Fire and Casualty Company ("AFCIC")	24066	0.00%	All Lines
	America First Lloyd's Insurance Company ("AFLIC")	11526	0.00%	All Lines
	American States Insurance Company ("ASIC")	19704	0.00%	All Lines
	American States Insurance Company of Texas ("ASICT")	19712	0.00%	All Lines
	American States Lloyd's Insurance Company ("ASLCO")	31933	0.00%	All Lines
	American States Preferred Insurance Company ("ASPCO")	37214	0.00%	All Lines
	Bloomington Compensation Insurance Company ("BCI")	12311	0.00%	All Lines
	Colorado Casualty Insurance Company ("CCIC")	41785	0.00%	All Lines
	Consolidated Insurance Company ("CIC")	22640	0.00%	All Lines
	Excelsior Insurance Company ("EIC")	11045	0.00%	All Lines
	First National Insurance Company of America ("FNICA")	24724	0.00%	All Lines
	The First Liberty Insurance Corporation ("FST")	33588	0.00%	All Lines
	General Insurance Company of America ("GICA")	24732	0.00%	All Lines
	Golden Eagle Insurance Corporation ("GEIC")	10836	0.00%	All Lines
	Hawkeye-Security Insurance Company ("HSIC")	36919	0.00%	All Lines
	Insurance Company of Illinois ("ICIL")	26700	0.00%	All Lines
	Indiana Insurance Company ("IIC")	22659	0.00%	All Lines
	Ironshore Indemnity Inc. ("III")	23647	0.00%	All Lines
	Ironshore Specialty Insurance Company ("ISIC")	25445	0.00%	All Lines
	Liberty Insurance Corporation ("LIC")	42404	0.00%	All Lines
	Liberty Insurance Underwriters, Inc. ("LIU")	19917	0.00%	All Lines
	Liberty County Mutual Insurance Company ("LCMIC")	19544	0.00%	All Lines
	LM General Insurance Company ("LMGIC")	36447	0.00%	All Lines
	Liberty Lloyd's of Texas Insurance Company ("LLOT")	11041	0.00%	All Lines
	LM Insurance Corporation ("LMC")	33600	0.00%	All Lines
	Liberty Mutual Mid-Atlantic Insurance Company ("LMMAIC")	14486	0.00%	All Lines
	Liberty Mutual Personal Insurance Company ("LMPICO")	12484	0.00%	All Lines
	Liberty Northwest Insurance Corporation ("LNW")	41939	0.00%	All Lines
	Liberty Personal Insurance Company ("LPIC")	11746	0.00%	All Lines
	Liberty Surplus Insurance Corporation ("LSI")	10725	0.00%	All Lines
	Meridian Security Insurance Company ("MSI")	23353	0.00%	All Lines
	Mid-American Fire & Casualty Company ("MAFCC")	23507	0.00%	All Lines
	Milbank Insurance Company ("MBK")	41653	0.00%	All Lines
	Montgomery Mutual Insurance Company ("MMIC")	14613	0.00%	All Lines
	The Midwestern Indemnity Company ("MWIC")	23515	0.00%	All Lines

NOTES TO FINANCIAL STATEMENTS

	National Insurance Association ("NIA")	27944	0.00%	All Lines
	The Netherlands Insurance Company ("NIC")	24171	0.00%	All Lines
	North Pacific Insurance Company ("NPIC")	23892	0.00%	All Lines
	Ohio Security Insurance Company ("OSIC")	24082	0.00%	All Lines
	Oregon Automobile Insurance Company ("Oaic")	23922	0.00%	All Lines
	Patrons Mutual Insurance Company of Connecticut ("PMI")	14923	0.00%	All Lines
	Peerless Indemnity Insurance Company ("PIIC")	18333	0.00%	All Lines
	Plaza Insurance Company ("PIC")	30945	0.00%	All Lines
	Rockhill Insurance Company ("RIC")	28053	0.00%	All Lines
	Safeco Insurance Company of Illinois ("SICIL")	39012	0.00%	All Lines
	Safeco Insurance Company of Indiana ("SICIN")	11215	0.00%	All Lines
	Safeco Insurance Company of Oregon ("SICOR")	11071	0.00%	All Lines
	Safeco Lloyds Insurance Company ("SLICO")	11070	0.00%	All Lines
	Safeco National Insurance Company ("SNIC")	24759	0.00%	All Lines
	Safeco Surplus Lines Insurance Company ("SSLIC")	11100	0.00%	All Lines
	State Automobile Mutual Insurance Company ("SAM")	25135	0.00%	All Lines
	State Auto Insurance Company of Ohio ("SOH")	11017	0.00%	All Lines
	State Auto Property & Casualty Insurance Company ("SPC")	25127	0.00%	All Lines
	State Auto Insurance Company of Wisconsin ("SWI")	31755	0.00%	All Lines
	Wausau Business Insurance Company ("WBIC")	26069	0.00%	All Lines
	Wausau General Insurance Company ("WGIC")	26425	0.00%	All Lines
	Wausau Underwriters Insurance Company ("WUIC")	26042	0.00%	All Lines
	West American Insurance Company ("WAIC")	44393	0.00%	All Lines
100% Quota Share Affiliated Com	LM Property and Casualty Insurance Company ("LMPAC")	32352	0.00%	All Lines

Under the terms of the Reinsurance Agreements, the sequence of transactions is as follows:

- A. Except for WBIC, WGIC and WUIC, each Affiliated Pool Company cedes its underwriting activity to the Lead Company. WBIC, WGIC and WUIC cede 100% of its direct underwriting activity to EICOW.
- B. After recording the assumed affiliate transactions noted above, the Lead Company records 100% of its external assumed and ceded reinsurance activity.
- C. The Lead Company's remaining underwriting activity, after processing all internal and external reinsurance, is retroceded to the pool members in accordance with each company's pool participation percentage, as noted above.
- D. There were no members that are parties to reinsurance agreements with non-affiliated reinsurers covering business subject to the pooling agreement and have a contractual right of direct recovery from the non-affiliated reinsurer per the terms of such reinsurance agreements.
- E. There were no discrepancies between entries regarding pooled business on the assumed and ceded reinsurance schedules of the Lead Company and corresponding entries on the assumed and ceded reinsurance schedules of other pooled participants.
- F. The write-off of uncollectible reinsurance is pooled and the provision for reinsurance is recognized by the entity placing the outbound external reinsurance.
- G. Amounts due (to)/from affiliated entities participating in the Liberty Mutual Second Amended and Restated Intercompany Reinsurance Agreement as of December 31, 2022:

Affiliate	Amount
Liberty Mutual Insurance Company	\$10,060,182

27. Structured Settlements

- A. The Company has no net exposure to contingent liabilities from the purchase of annuities. Refer to Note 26.

	Loss Reserves Eliminated by Annuities	Unrecorded Loss Contingencies
Disclose the amount of reserves no longer carried	\$ 0	0

- B. Not applicable.

Life Insurance Company and Location	Licensed in Company's State of Domicile	Statement Value (ie: Present Value) of Annuities

28. Health Care Receivables

Not Applicable

29. Participating Policies

NOTES TO FINANCIAL STATEMENTS

Not Applicable

30. Premium Deficiency Reserves

- (1)
1. Liability carried for premium deficiency reserves \$ 0
2. Date of the most recent evaluation of this liability 12/31/2022
3. Was anticipated investment income utilized in the calculation? Yes No YES

31. High Deductible

Not applicable.

A. Reserve Credit Recorded on Unpaid Claims and Amount Billed and Recoverable on Paid Claims for High Deductibles

Not Applicable

B. Unsecured High Deductible Recoverables for Individual Obligors Part of a Group Under the Same Management or Control Which

Not Applicable

32. Discounting of Liabilities for Unpaid Losses or Unpaid Loss Adjustment Expenses

The Company has no net loss and loss adjustment expense reserves. Refer to Note 26.

A. TABULAR DISCOUNT

	Tabular Discount Included in	
	Schedule P, Part 1*	
	1	2
	CASE	IBNR
Schedule P Lines of Business:		
1. HOME OWNERS / FARMOWNERS	\$ 0	0
2. PRIVATE PASSENGER AUTO LIABILITY/MEDICAL	\$ 0	0
3. COMMERCIAL AUTO/TRUCK LIABILITY/MEDICAL	\$ 0	0
4. WORKERS' COMPENSATION	\$ 0	0
5. COMMERCIAL MULTIPLE PERIL	\$ 0	0
6. MEDICAL PROFESSIONAL LIABILITY - OCCURRENCE	\$ 0	0
7. MEDICAL PROFESSIONAL LIABILITY - CLAIMS-MADE	\$ 0	0
8. SPECIAL LIABILITY	\$ 0	0
9. OTHER LIABILITY - OCCURRENCE	\$ 0	0
10. OTHER LIABILITY - CLAIMS-MADE	\$ 0	0
11. SPECIAL PROPERTY	\$ 0	0
12. AUTO PHYSICAL DAMAGE	\$ 0	0
13. FIDELITY, SURETY	\$ 0	0
14. OTHER (INCLUDING CREDIT, A&H)	\$ 0	0
15. INTERNATIONAL	\$ 0	0
16. REINSURANCE NONPROPORTIONAL ASSUMED PROPERTY	\$ 0	0
17. REINSURANCE NONPROPORTIONAL ASSUMED LIABILITY	\$ 0	0
18. REINSURANCE NONPROPORTIONAL ASSUMED FINANCIAL LINES	\$ 0	0
19. PRODUCTS LIABILITY - OCCURRENCE	\$ 0	0
20. PRODUCTS LIABILITY - CLAIMS-MADE	\$ 0	0
21. FINANCIAL GUARANTY/MORTGAGE GUARANTY	\$ 0	0
22. WARRANTY	\$ 0	0
23. TOTAL	\$ 0	0

* Must exclude medical loss reserves and all loss adjustment expense reserves.

Not applicable.

B. NON-TABULAR DISCOUNT

	1	2	3	4
	CASE	IBNR	Defense & Cost Containment Expense	Adjusting & Other Expenses
Schedule P Lines of Business:				
1. HOME OWNERS / FARMOWNERS	\$ 0	0	0	0
2. PRIVATE PASSENGER AUTO LIABILITY/MEDICAL	\$ 0	0	0	0
3. COMMERCIAL AUTO/TRUCK LIABILITY/MEDICAL	\$ 0	0	0	0
4. WORKERS' COMPENSATION	\$ 0	0	0	0
5. COMMERCIAL MULTIPLE PERIL	\$ 0	0	0	0
6. MEDICAL PROFESSIONAL LIABILITY - OCCURRENCE	\$ 0	0	0	0
7. MEDICAL PROFESSIONAL LIABILITY - CLAIMS-MADE	\$ 0	0	0	0
8. SPECIAL LIABILITY	\$ 0	0	0	0
9. OTHER LIABILITY - OCCURRENCE	\$ 0	0	0	0

NOTES TO FINANCIAL STATEMENTS

10. OTHER LIABILITY - CLAIMS-MADE	\$	0	0	0	0
11. SPECIAL PROPERTY	\$	0	0	0	0
12. AUTO PHYSICAL DAMAGE	\$	0	0	0	0
13. FIDELITY, SURETY	\$	0	0	0	0
14. OTHER (INCLUDING CREDIT, A&H)	\$	0	0	0	0
15. INTERNATIONAL	\$	0	0	0	0
16. REINSURANCE NONPROPORTIONAL ASSUMED PROPERTY	\$	0	0	0	0
17. REINSURANCE NONPROPORTIONAL ASSUMED LIABILITY	\$	0	0	0	0
18. REINSURANCE NONPROPORTIONAL ASSUMED FINANCIAL LINES	\$	0	0	0	0
19. PRODUCTS LIABILITY - OCCURRENCE	\$	0	0	0	0
20. PRODUCTS LIABILITY - CLAIMS-MADE	\$	0	0	0	0
21. FINANCIAL GUARANTY/MORTGAGE GUARANTY	\$	0	0	0	0
22. WARRANTY	\$	0	0	0	0
23. TOTAL	\$	0	0	0	0

Columns in the table above should include medical loss reserves and all loss adjustment expense reserves, whether reported as tabular or nontabular in Schedule P.

Not applicable.

33. Asbestos/Environmental Reserves

A. Does the company have on the books, or has it ever written an insured for which you have identified a potential for the existence of, a liability due to asbestos losses?

The Company has no net exposure to asbestos and environmental claims. Refer to Note 26.

(1) <u>Direct:</u>		2018	2019	2020	2021	2022
a. Beginning reserves:	\$	0	0	0	0	0
b. Incurred losses and loss adjustment expense	\$	0	0	0	0	0
c. Calendar year payments for losses & loss adj expenses	\$	0	0	0	0	0
d. Ending reserves	\$	0	0	0	0	0

(2) <u>Assumed Reinsurance:</u>		2018	2019	2020	2021	2022
a. Beginning reserves:	\$	0	0	0	0	0
b. Incurred losses and loss adjustment expense	\$	0	0	0	0	0
c. Calendar year payments for losses & loss adj expenses	\$	0	0	0	0	0
d. Ending reserves	\$	0	0	0	0	0

(3) <u>Net of Ceded Reinsurance:</u>		2018	2019	2020	2021	2022
a. Beginning reserves:	\$	0	0	0	0	0
b. Incurred losses and loss adjustment expense	\$	0	0	0	0	0
c. Calendar year payments for losses & loss adj expenses	\$	0	0	0	0	0
d. Ending reserves	\$	0	0	0	0	0

B. State the amount of the ending reserves for Bulk + IBNR included in A (Loss & LAE):

Not Applicable

C. State the amount of the ending reserves for loss adjustment expenses included in A (Case, Bulk + IBNR):

Not Applicable

D. Does the company have on the books, or has it ever written an insured for which you have identified a potential for the existence of, a liability due to environmental losses

Not Applicable

E. State the amt. of the ending res. for Bulk + IBNR included in D (Loss & LAE):

Not Applicable

F. State the amt. of the ending res. for loss adj. exp. included in D (Case, Bulk + IBNR):

Not Applicable

34. Subscriber Savings Accounts

Not applicable

35. Multiple Peril Crop Insurance

Not Applicable

36. Financial Guaranty Insurance

A. Not applicable.

NOTES TO FINANCIAL STATEMENTS

(1) Installment contracts:

Financial guarantee insurance contracts where premiums are received as installed payments over the period of the contract, rather than at inception:

b. Schedule of premiums (undiscounted) expected to be collected under all installment contracts:

1.

1st Quarter 2023	\$	0
2nd Quarter 2023	\$	0
3rd Quarter 2023	\$	0
4th Quarter 2023	\$	0
Year 2024	\$	0
Year 2025	\$	0
Year 2026	\$	0
Year 2027	\$	0

2.

2028 through 2032	\$	0
2033 through 2037	\$	0
2038 through 2042	\$	0

c. Roll forward of the expected future premiums (undiscounted), including:

1. Expected future premiums - Beginning of Year	\$	0
2. Less - Premium payments received for existing installment contracts	\$	0
3. Add - Expected premium payments for new installment contracts	\$	0
4. Adjustments to the expected future premium payments	\$	0
5. Expected future premiums - End of Year	\$	0

(2) Non-installment contracts:

b. Schedule of the future expected earned premium revenue on non-installment contracts as of the latest date of the statement of financial position:

1.

1st Quarter 2023	\$	0
2nd Quarter 2023	\$	0
3rd Quarter 2023	\$	0
4th Quarter 2023	\$	0
Year 2024	\$	0
Year 2025	\$	0
Year 2026	\$	0
Year 2027	\$	0

2.

2028 through 2032	\$	0
2033 through 2037	\$	0
2038 through 2042	\$	0

(3) Claim liability:

b. Significant components of the change in the claim liability for the period:

Components		
1. Accretion of the discount	\$	0
2. Change in timing	\$	0
3. New reserves for defaults of insured contracts	\$	0
4. Change in deficiency reserves	\$	0
5. Change in incurred but not reported claims	\$	0
6. Total	\$	0

(4) Description of the insurance enterprise's risk management activities used to track and monitor deteriorating insured financial obligations:

a. Description of each grouping or category used to track and monitor deteriorating insured financial obligations

B. Schedule of insured financial obligations at the end of the period:

Not Applicable

GENERAL INTERROGATORIES

5.2 If yes, provide the name of the entity, NAIC Company Code, and state of domicile (use two letter state abbreviation) for any entity that has ceased to exist as a result of the merger or consolidation.

1 Name of Entity	2 NAIC Company Code	3 State of Domicile
.....
.....

6.1 Has the reporting entity had any Certificates of Authority, licenses or registrations (including corporate registration, if applicable) suspended or revoked by any governmental entity during the reporting period? Yes [] No [X]

6.2 If yes, give full information:

.....

7.1 Does any foreign (non-United States) person or entity directly or indirectly control 10% or more of the reporting entity? Yes [] No [X]

7.2 If yes,

7.21 State the percentage of foreign control. _____ %

7.22 State the nationality(s) of the foreign person(s) or entity(s); or if the entity is a mutual or reciprocal, the nationality of its manager or attorney-in-fact and identify the type of entity(s) (e.g., individual, corporation, government, manager or attorney-in-fact).

1 Nationality	2 Type of Entity
.....
.....

8.1 Is the company a subsidiary of a depository institution holding company (DIHC) or a DIHC itself, regulated by the Federal Reserve Board? Yes [] No [X]

8.2 If response to 8.1 is yes, please identify the name of the DIHC.

.....

8.3 Is the company affiliated with one or more banks, thrifts or securities firms? Yes [] No [X]

8.4 If response to 8.3 is yes, please provide the names and locations (city and state of the main office) of any affiliates regulated by a federal financial regulatory services agency [i.e. the Federal Reserve Board (FRB), the Office of the Comptroller of the Currency (OCC), the Federal Deposit Insurance Corporation (FDIC) and the Securities Exchange Commission (SEC)] and identify the affiliate's primary federal regulator.

1 Affiliate Name	2 Location (City, State)	3 FRB	4 OCC	5 FDIC	6 SEC
.....
.....

8.5 Is the reporting entity a depository institution holding company with significant insurance operations as defined by the Board of Governors of Federal Reserve System or a subsidiary of the depository institution holding company? Yes [] No [X]

8.6 If response to 8.5 is no, is the reporting entity a company or subsidiary of a company that has otherwise been made subject to the Federal Reserve Board's capital rule? Yes [] No [X] N/A []

9. What is the name and address of the independent certified public accountant or accounting firm retained to conduct the annual audit?

Ernst & Young, LLP
 200 Clarendon Street
 Boston, MA 02116

GENERAL INTERROGATORIES

10.1 Has the insurer been granted any exemptions to the prohibited non-audit services provided by the certified independent public accountant requirements as allowed in Section 7H of the Annual Financial Reporting Model Regulation (Model Audit Rule), or substantially similar state law or regulation? Yes [] No [X]

10.2 If response to 10.1 is yes, provide information related to this exemption:

10.3 Has the insurer been granted any exemptions related to the other requirements of the Annual Financial Reporting Model Regulation as allowed for in Section 18A of the Model Regulation, or substantially similar state law or regulation? Yes [] No [X]

10.4 If response to 10.3 is yes, provide information related to this exemption:

10.5 Has the reporting entity established an Audit Committee in compliance with the domiciliary state insurance laws? Yes [X] No [] N/A []

10.6 If the response to 10.5 is no or n/a, please explain.

11. What is the name, address and affiliation (officer/employee of the reporting entity or actuary/consultant associated with an actuarial consulting firm) of the individual providing the statement of actuarial opinion/certification?
 Stephanie Neyenhouse FCAS, MAAA
 175 Berkeley Street, Boston, MA 02116
 Vice President and Chief Actuary, Liberty Mutual Group Inc.

12.1 Does the reporting entity own any securities of a real estate holding company or otherwise hold real estate indirectly? Yes [] No [X]

12.11 Name of real estate holding company	
12.12 Number of parcels involved	
12.13 Total book/adjusted carrying value	\$

12.2 If yes, provide explanation:

13. FOR UNITED STATES BRANCHES OF ALIEN REPORTING ENTITIES ONLY:

13.1 What changes have been made during the year in the United States manager or the United States trustees of the reporting entity?

13.2 Does this statement contain all business transacted for the reporting entity through its United States Branch on risks wherever located? Yes [] No [X]

13.3 Have there been any changes made to any of the trust indentures during the year? Yes [] No [X]

13.4 If answer to (13.3) is yes, has the domiciliary or entry state approved the changes? Yes [] No [] N/A [X]

GENERAL INTERROGATORIES

- 14.1 Are the senior officers (principal executive officer, principal financial officer, principal accounting officer or controller, or persons performing similar functions) of the reporting entity subject to a code of ethics, which includes the following standards?
- a. Honest and ethical conduct, including the ethical handling of actual or apparent conflicts of interest between personal and professional relationships;
 - b. Full, fair, accurate, timely and understandable disclosure in the periodic reports required to be filed by the reporting entity;
 - c. Compliance with applicable governmental laws, rules, and regulations;
 - d. The prompt internal reporting of violations to an appropriate person or persons identified in the code; and
 - e. Accountability for adherence to the code.
- Yes No

14.11 If the response to 14.1 is no, please explain:
 N/A

- 14.2 Has the code of ethics for senior managers been amended? Yes No

14.21 If the response to 14.2 is yes, provide information related to amendment(s).
 To modernize and provide greater clarity, in October 2022, we launched a revamped Code of Business Ethics & Conduct containing interactive elements, real-life examples, and new sections covering Competitor Information and Anti-Money Laundering.

- 14.3 Have any provisions of the code of ethics been waived for any of the specified officers? Yes No

14.31 If the response to 14.3 is yes, provide the nature of any waiver(s).

- 15.1 Is the reporting entity the beneficiary of a Letter of Credit that is unrelated to reinsurance where the issuing or confirming bank is not on the SVO Bank List? Yes No

15.2 If the response to 15.1 is yes, indicate the American Bankers Association (ABA) Routing Number and the name of the issuing or confirming bank of the Letter of Credit and describe the circumstances in which the Letter of Credit is triggered.

1 American Bankers Association (ABA) Routing Number	2 Issuing or Confirming Bank Name	3 Circumstances That Can Trigger the Letter of Credit	4 Amount

BOARD OF DIRECTORS

16. Is the purchase or sale of all investments of the reporting entity passed upon either by the board of directors or a subordinate committee thereof? Yes No
17. Does the reporting entity keep a complete permanent record of the proceedings of its board of directors and all subordinate committees thereof? Yes No
18. Has the reporting entity an established procedure for disclosure to its board of directors or trustees of any material interest or affiliation on the part of any of its officers, directors, trustees or responsible employees that is in conflict or is likely to conflict with the official duties of such person? Yes No

FINANCIAL

19. Has this statement been prepared using a basis of accounting other than Statutory Accounting Principles (e.g., Generally Accepted Accounting Principles)? Yes No

GENERAL INTERROGATORIES

20.1 Total amount loaned during the year (inclusive of Separate Accounts, exclusive of policy loans):

20.11 To directors or other officers	\$ _____
20.12 To stockholders not officers	\$ _____
20.13 Trustees, supreme or grand (Fraternal only)	\$ _____

20.2 Total amount of loans outstanding at the end of year (inclusive of Separate Accounts, exclusive of policy loans):

20.21 To directors or other officers	\$ _____
20.22 To stockholders not officers	\$ _____
20.23 Trustees, supreme or grand (Fraternal only)	\$ _____

21.1 Were any assets reported in this statement subject to a contractual obligation to transfer to another party without the liability for such obligation being reported in the statement? Yes [] No [X]

21.2 If yes, state the amount thereof at December 31 of the current year:

21.21 Rented from others	\$ _____
21.22 Borrowed from others	\$ _____
21.23 Leased from others	\$ _____
21.24 Other	\$ _____

22.1 Does this statement include payments for assessments as described in the Annual Statement Instructions other than guaranty fund or guaranty association assessments? Yes [] No [X]

22.2 If answer is yes:

22.21 Amount paid as losses or risk adjustment	\$ _____
22.22 Amount paid as expenses	\$ _____
22.23 Other amounts paid	\$ _____

23.1 Does the reporting entity report any amounts due from parent, subsidiaries or affiliates on Page 2 of this statement? Yes [X] No []

23.2 If yes, indicate any amounts receivable from parent included in the Page 2 amount: \$ _____

24.1 Does the insurer utilize third parties to pay agent commissions in which the amounts advanced by the third parties are not settled in full within 90 days? Yes [] No [X]

24.2 If the response to 24.1 is yes, identify the third-party that pays the agents and whether they are a related party.

1 Name of Third Party	2 Is the Third-Party Agent a Related Party (Yes/No)

INVESTMENT

25.01 Were all the stocks, bonds and other securities owned December 31 of current year, over which the reporting entity has exclusive control, in the actual possession of the reporting entity on said date? (other than securities lending programs addressed in 25.03) Yes [X] No []

25.02 If no, give full and complete information, relating thereto:

.....

.....

.....

25.03 For security lending programs, provide a description of the program including value for collateral and amount of loaned securities, and whether collateral is carried on or off-balance sheet. (an alternative is to reference Note 17 where this information is also provided)

The Company participates in a Securities Lending Program to generate additional income, whereby certain fixed income and mortgage backed securities are loaned for a period of time from the Company's portfolio to qualifying third parties, via a lending agent. The company does not participate in term loans; therefore, the company does not have contractual collateral transactions that extend beyond one year from the reporting date. Borrowers of these securities provide collateral equal to or in excess of 102% of the market value of the loaned securities. Acceptable collateral may be in the form of cash or U.S. Government securities, such as Treasuries and Agency Bonds. The market value of the loaned securities is monitored and additional collateral is obtained if the market value of the collateral falls below 102% of the market value of the loaned securities. Additionally, the lending agent indemnifies the Company against borrower defaults. Cash collateral is carried as an asset with an offsetting liability on the balance sheet, as the collateral is unrestricted and the Company can exercise discretion as to how the collateral is invested. The loaned securities remain a recorded asset of the Company.

GENERAL INTERROGATORIES

25.04 For the reporting entity's securities lending program, report amount of collateral for conforming programs as outlined in the Risk Based Capital Instructions. \$ 8,856,765

25.05 For the reporting entity's securities lending program report amount of collateral for other programs. \$ _____

25.06 Does your securities lending program require 102% (domestic securities) and 105% (foreign securities) from the counterparty at the outset of the contract? Yes No N/A

25.07 Does the reporting entity non-admit when the collateral received from the counterparty falls below 100%? Yes No N/A

25.08 Does the reporting entity or the reporting entity's securities lending agent utilize the Master Securities Lending Agreement (MSLA) to conduct securities lending? Yes No N/A

25.09 For the reporting entity's security lending program, state the amount of the following as of December 31 of the current year:

25.091 Total fair value of reinvested collateral assets reported on Schedule DL, Parts 1 and 2 \$ 4,588,083

25.092 Total book adjusted/carrying value of reinvested collateral assets reported on Schedule DL, Parts 1 and 2 \$ 4,588,083

25.093 Total payable for securities lending reported on the liability page \$ 4,588,083

26.1 Were any of the stocks, bonds or other assets of the reporting entity owned at December 31 of the current year not exclusively under the control of the reporting entity or has the reporting entity sold or transferred any assets subject to a put option contract that is currently in force? (Exclude securities subject to Interrogatory 21.1 and 25.03). Yes No

26.2 If yes, state the amount thereof at December 31 of the current year:

26.21	Subject to repurchase agreements	\$ _____
26.22	Subject to reverse repurchase agreements	\$ _____
26.23	Subject to dollar repurchase agreements	\$ _____
26.24	Subject to reverse dollar repurchase agreements	\$ _____
26.25	Placed under option agreements	\$ _____
26.26	Letter stock or securities restricted as to sale - excluding FHLB Capital Stock	\$ _____
26.27	FHLB Capital Stock	\$ _____
26.28	On deposit with states	\$ <u>6,392,639</u>
26.29	On deposit with other regulatory bodies	\$ <u>165,686</u>
26.30	Pledged as collateral - excluding collateral pledged to an FHLB	\$ _____
26.31	Pledged as collateral to FHLB - including assets backing funding agreements	\$ _____
26.32	Other	\$ _____

26.3 For category (26.26) provide the following:

1 Nature of Restriction	2 Description	3 Amount
.....
.....

27.1 Does the reporting entity have any hedging transactions reported on Schedule DB? Yes No

GENERAL INTERROGATORIES

27.2 If yes, has a comprehensive description of the hedging program been made available to the domiciliary state? Yes [] No [] N/A [X]
 If no, attach a description with this statement.

LINES 27.3 through 27.5 : FOR LIFE/FRATERNAL REPORTING ENTITIES ONLY:

27.3 Does the reporting entity utilize derivatives to hedge variable annuity guarantees subject to fluctuations as a result of interest rate sensitivity? Yes [] No []

27.4 If the response to 27.3 is YES, does the reporting entity utilize:

27.41	Special accounting provision of SSAP No. 108	Yes [] No []
27.42	Permitted accounting practice	Yes [] No []
27.43	Other accounting guidance	Yes [] No []

27.5 By responding YES to 27.41 regarding utilizing the special accounting provisions of SSAP No. 108, the reporting entity attests to the following: Yes [] No []

- The reporting entity has obtained explicit approval from the domiciliary state.
- Hedging strategy subject to the special accounting provisions is consistent with the requirements of VM-21.
- Actuarial certification has been obtained which indicates that the hedging strategy is incorporated within the establishment of VM-21 reserves and provides the impact of the hedging strategy within the Actuarial Guideline Conditional Tail Expectation Amount.
- Financial Officer Certification has been obtained which indicates that the hedging strategy meets the definition of a Clearly Defined Hedging Strategy within VM-21 and that the Clearly Defined Hedging Strategy is the hedging strategy being used by the company in its actual day-to-day risk mitigation efforts.

28.1 Were any preferred stocks or bonds owned as of December 31 of the current year mandatorily convertible into equity, or, at the option of the issuer, convertible into equity? Yes [] No [X]

28.2 If yes, state the amount thereof at December 31 of the current year. \$ _____

29. Excluding items in Schedule E - Part 3 - Special Deposits, real estate, mortgage loans and investments held physically in the reporting entity's offices, vaults or safety deposit boxes, were all stocks, bonds and other securities, owned throughout the current year held pursuant to a custodial agreement with a qualified bank or trust company in accordance with Section 1, III - General Examination Considerations, F. Outsourcing of Critical Functions, Custodial or Safekeeping Agreements of the NAIC Financial Condition Examiners Handbook? Yes [X] No []

29.01 For agreements that comply with the requirements of the NAIC Financial Condition Examiners Handbook, complete the following:

1 Name of Custodian(s)	2 Custodian's Address
.....
.....

29.02 For all agreements that do not comply with the requirements of the NAIC Financial Condition Examiners Handbook, provide the name, location and a complete explanation:

1 Name(s)	2 Location(s)	3 Complete Explanation(s)
.....
.....

29.03 Have there been any changes, including name changes, in the custodian(s) identified in 29.01 during the current year? Yes [] No [X]

29.04 If yes, give full and complete information relating thereto:

1 Old Custodian	2 New Custodian	3 Date of Change	4 Reason
.....
.....

GENERAL INTERROGATORIES

29.05 Investment management - Identify all investment advisors, investment managers, broker/dealers, including individuals that have the authority to make investment decisions on behalf of the reporting entity. For assets that are managed internally by employees of the reporting entity, note as such. ["... that have access to the investment accounts"; "...handle securities"]

1 Name Firm or Individual	2 Affiliation
Liberty Mutual Group Asset Management Inc.	A
.....

29.0597 For those firms/individuals listed in the table for Question 29.05, do any firms/individuals unaffiliated with the reporting entity (i.e., designated with a "U") manage more than 10% of the reporting entity's invested assets? Yes [] No [X]

29.0598 For firms/individuals unaffiliated with the reporting entity (i.e., designated with a "U") listed in the table for Question 29.05, does the total assets under management aggregate to more than 50% of the reporting entity's invested assets? Yes [] No [X]

29.06 For those firms or individuals listed in the table 29.05 with an affiliation code of "A" (affiliated) or "U" (unaffiliated), provide the information for the table below.

1 Name Firm or Individual	2 Central Registration Depository Number	3 Legal Entity Identifier (LEI)	4 Registered With	5 Investment Management Agreement (IMA) Filed
Liberty Mutual Group Asset Management Inc.	N/A	N/A	N/A	DS
.....

30.1 Does the reporting entity have any diversified mutual funds reported in Schedule D – Part 2 (diversified according to the Securities and Exchange Commission (SEC) in the Investment Company Act of 1940 [Section 5 (b) (1)])? Yes [] No [X]

30.2 If yes, complete the following schedule:

1 CUSIP #	2 Name of Mutual Fund	3 Book/Adjusted Carrying Value
.....
.....
30.2999 TOTAL		

30.3 For each mutual fund listed in the table above, complete the following schedule:

1 Name of Mutual Fund (from above table)	2 Name of Significant Holding of the Mutual Fund	3 Amount of Mutual Fund's Book/Adjusted Carrying Value Attributable to the Holding	4 Date of Valuation
.....
.....

31. Provide the following information for all short-term and long-term bonds and all preferred stocks. Do not substitute amortized value or statement value for fair value.

	1 Statement (Admitted) Value	2 Fair Value	3 Excess of Statement over Fair Value (-), or Fair Value over Statement (+)
31.1 Bonds	72,192,270	66,384,654	(5,807,616)
31.2 Preferred stocks			
31.3 Totals	72,192,270	66,384,654	(5,807,616)

GENERAL INTERROGATORIES

31.4 Describe the sources or methods utilized in determining the fair values:

The primary source for reported fair values is our pricing vendor, Interactive Data Corporation, followed by backfill from Reuters, Bloomberg, Barclays, Merrill Lynch, and Markit for Term Loan securities. Lastly, management determines fair value based on quoted market prices of similar financial instruments or by using industry recognized valuation techniques.

32.1 Was the rate used to calculate fair value determined by a broker or custodian for any of the securities in Schedule D? Yes [] No [X]

32.2 If the answer to 32.1 is yes, does the reporting entity have a copy of the broker's or custodian's pricing policy (hard copy or electronic copy) for all brokers or custodians used as a pricing source? Yes [] No []

32.3 If the answer to 32.2 is no, describe the reporting entity's process for determining a reliable pricing source for purposes of disclosure of fair value for Schedule D:

.....

33.1 Have all the filing requirements of the Purposes and Procedures Manual of the NAIC Investment Analysis Office been followed? Yes [X] No []

33.2 If no, list exceptions:

.....

34 By self-designating 5GI securities, the reporting entity is certifying the following elements of each self-designated 5GI security:

- a. Documentation necessary to permit a full credit analysis of the security does not exist or an NAIC CRP credit rating for an FE or PL security is not available.
- b. Issuer or obligor is current on all contracted interest and principal payments.
- c. The insurer has an actual expectation of ultimate payment of all contracted interest and principal.

Has the reporting entity self-designated 5GI securities? Yes [] No [X]

35 By self-designating PLGI securities, the reporting entity is certifying the following elements of each self-designated PLGI security:

- a. The security was purchased prior to January 1, 2018.
- b. The reporting entity is holding capital commensurate with the NAIC Designation reported for the security.
- c. The NAIC Designation was derived from the credit rating assigned by an NAIC CRP in its legal capacity as an NRSRO which is shown on a current private letter rating held by the insurer and available for examination by state insurance regulators.
- d. The reporting entity is not permitted to share this credit rating of the PL security with the SVO.

Has the reporting entity self-designated PLGI securities? Yes [] No [X]

36. By assigning FE to a Schedule BA non-registered private fund, the reporting entity is certifying the following elements of each self-designated FE fund:

- a. The shares were purchased prior to January 1, 2019.
- b. The reporting entity is holding capital commensurate with the NAIC Designation reported for the security.
- c. The security had a public credit rating(s) with annual surveillance assigned by an NAIC CRP in its legal capacity as an NRSRO prior to January 1, 2019.
- d. The fund only or predominantly holds bonds in its portfolio.
- e. The current reported NAIC Designation was derived from the public credit rating(s) with annual surveillance assigned by an NAIC CRP in its legal capacity as an NRSRO.
- f. The public credit rating(s) with annual surveillance assigned by an NAIC CRP has not lapsed.

Has the reporting entity assigned FE to Schedule BA non-registered private funds that complied with the above criteria? Yes [] No [X]

37. By rolling/renewing short-term or cash-equivalent investments with continued reporting on Schedule DA, part 1 or Schedule E Part 2 (identified through a code (%) in those investment schedules), the reporting entity is certifying the following:

- a. The investment is a liquid asset that can be terminated by the reporting entity on the current maturity date.
- b. If the investment is with a nonrelated party or nonaffiliate, then it reflects an arms-length transaction with renewal completed at the discretion of all involved parties.
- c. If the investment is with a related party or affiliate, then the reporting entity has completed robust re-underwriting of the transaction for which documentation is available for regulator review.
- d. Short-term and cash equivalent investments that have been renewed/rolled from the prior period that do not meet the criteria in 37.a - 37.c are reported as long-term investments.

Has the reporting entity rolled/renewed short-term or cash equivalent investments in accordance with these criteria? Yes [] No [X] N/A []

38.1 Does the reporting entity directly hold cryptocurrencies? Yes [] No [X]

38.2 If the response to 38.1 is yes, on what schedule are they reported? _____

GENERAL INTERROGATORIES

39.1 Does the reporting entity directly or indirectly accept cryptocurrencies as payments for premiums on policies? Yes [] No [X]

39.2 If the response to 39.1 is yes, are the cryptocurrencies held directly or are they immediately converted to U.S. dollars? Yes [] No [X]

39.21 Held directly Yes [] No [X]

39.22 Immediately converted to U.S. dollars Yes [] No [X]

39.3 If the response to 38.1 or 39.1 is yes, list all cryptocurrencies accepted for payments of premiums or that are held directly.

1	2	3
Name of Cryptocurrency	Immediately Converted to USD, Directly Held, or Both	Accepted for Payment of Premiums
.....		
.....		

40.1 Amount of payments to trade associations, service organizations and statistical or Rating Bureaus, if any? \$ _____

40.2 List the name of the organization and the amount paid if any such payment represented 25% or more of the total payments to trade associations, service organizations and statistical or rating bureaus during the period covered by this statement.

1	2
Name	Amount Paid
.....	\$
.....	\$
.....	\$

41.1 Amount of payments for legal expenses, if any? \$ _____

41.2 List the name of the firm and the amount paid if any such payment represented 25% or more of the total payments for legal expenses during the period covered by this statement.

1	2
Name	Amount Paid
.....	\$
.....	\$
.....	\$

42.1 Amount of payments for expenditures in connection with matters before legislative bodies, officers or departments of government, if any? \$ _____

42.2 List the name of the firm and the amount paid if any such payment represented 25% or more of the total payment expenditures in connection with matters before legislative bodies, officers or departments of government during the period covered by this statement.

1	2
Name	Amount Paid
.....	\$
.....	\$
.....	\$

GENERAL INTERROGATORIES

PART 2 – PROPERTY & CASUALTY INTERROGATORIES

1.1 Does the reporting entity have any direct Medicare Supplement Insurance in force? Yes [] No [X]

1.2 If yes, indicate premium earned on U.S. business only. \$ _____

1.3 What portion of Item (1.2) is not reported on the Medicare Supplement Insurance Experience Exhibit? \$ _____

1.31 Reason for excluding

.....

.....

.....

1.4 Indicate amount of earned premium attributable to Canadian and/or Other Alien not included in Item (1.2) above. \$ _____

1.5 Indicate total incurred claims on all Medicare Supplement insurance. \$ _____

1.6 Individual policies:

Most current three years:

1.61 Total premium earned \$ _____

1.62 Total incurred claims \$ _____

1.63 Number of covered lives _____

All years prior to most current three years:

1.64 Total premium earned \$ _____

1.65 Total incurred claims \$ _____

1.66 Number of covered lives _____

1.7 Group policies:

Most current three years:

1.71 Total premium earned \$ _____

1.72 Total incurred claims \$ _____

1.73 Number of covered lives _____

All years prior to most current three years:

1.74 Total premium earned \$ _____

1.75 Total incurred claims \$ _____

1.76 Number of covered lives _____

2. Health Test:

	1		2	
	Current Year		Prior Year	
2.1 Premium Numerator	\$ _____		\$ _____	
2.2 Premium Denominator	\$ _____		\$ _____	
2.3 Premium Ratio (2.1 / 2.2)				
2.4 Reserve Numerator	\$ _____		\$ _____	
2.5 Reserve Denominator	\$ 287,641		\$ 6,708	
2.6 Reserve Ratio (2.4 / 2.5)				

3.1 Did the reporting entity issue participating policies during the calendar year? Yes [X] No []

3.2 If yes, provide the amount of premium written for participating and/or non-participating policies during the calendar year

3.21 Participating policies \$ 364,935

3.22 Non-participating policies \$ 327,143,523

4. For Mutual reporting entities and Reciprocal Exchanges only:

4.1 Does the reporting entity issue assessable policies? Yes [] No [X]

4.2 Does the reporting entity issue non-assessable policies? Yes [] No [X]

4.3 If assessable policies are issued, what is the extent of the contingent liability of the policyholders? _____ %

4.4 Total amount of assessments paid or ordered to be paid during the year on deposit notes or contingent premiums. \$ _____

5. For Reciprocal Exchanges Only:

5.1 Does the exchange appoint local agents? Yes [] No []

5.2 If yes, is the commission paid:

5.21 Out of Attorney's-in-fact compensation Yes [] No [] N/A []

5.22 As a direct expense of the exchange Yes [] No [] N/A []

5.3 What expenses of the Exchange are not paid out of the compensation of the Attorney-in-fact?

.....

.....

.....

5.4 Has any Attorney-in-fact compensation, contingent on fulfillment of certain conditions, been deferred? Yes [] No []

5.5 If yes, give full information

.....

.....

.....

6.1 What provision has this reporting entity made to protect itself from an excessive loss in the event of a catastrophe under a workers' compensation contract issued without limit loss:
see Note 21C1

.....

.....

.....

GENERAL INTERROGATORIES

PART 2 – PROPERTY & CASUALTY INTERROGATORIES

- 6.2 Describe the method used to estimate this reporting entity's probable maximum insurance loss, and identify the type of insured exposures comprising that probable maximum loss, the locations of concentrations of those exposures and the external resources (such as consulting firms or computer software models), if any, used in the estimation process:
see Note 21C1
- 6.3 What provision has this reporting entity made (such as a catastrophic reinsurance program) to protect itself from an excessive loss arising from the types and concentrations of insured exposures comprising its probable maximum property insurance loss?
see Note 21C1
- 6.4 Does the reporting entity carry catastrophe reinsurance protection for at least one reinstatement, in an amount sufficient to cover its estimated probable maximum loss attributable to a single loss event or occurrence? Yes [] No [X]
- 6.5 If no, describe any arrangements or mechanisms employed by the reporting entity to supplement its catastrophe reinsurance program or to hedge its exposure to unreinsured catastrophic loss
The Company cedes 100% of its business to Liberty Mutual Insurance Company, the lead company in the Liberty Mutual Pool. Liberty Mutual Insurance Company purchases external catastrophe reinsurance coverage.
- 7.1 Has the reporting entity reinsured any risk with any other entity under a quota share reinsurance contract that includes a provision that would limit the reinsurer's losses below the stated quota share percentage (e.g., a deductible, a loss ratio corridor, a loss cap, an aggregate limit or any similar provisions)? Yes [] No [X]
- 7.2 If yes, indicate the number of reinsurance contracts containing such provisions.
- 7.3 If yes, does the amount of reinsurance credit taken reflect the reduction in quota share coverage caused by any applicable limiting provision(s)? Yes [] No []
- 8.1 Has this reporting entity reinsured any risk with any other entity and agreed to release such entity from liability, in whole or in part, from any loss that may occur on this risk, or portion thereof, reinsured? Yes [] No [X]
- 8.2 If yes, give full information
- 9.1 Has the reporting entity ceded any risk under any reinsurance contract (or under multiple contracts with the same reinsurer or its affiliates) for which during the period covered by the statement: (i) it recorded a positive or negative underwriting result greater than 5% of prior year-end surplus as regards policyholders or it reported calendar year written premium ceded or year-end loss and loss expense reserves ceded greater than 5% of prior year-end surplus as regards policyholders; (ii) it accounted for that contract as reinsurance and not as a deposit; and (iii) the contract(s) contain one or more of the following features or other features that would have similar results:
(a) A contract term longer than two years and the contract is noncancellable by the reporting entity during the contract term;
(b) A limited or conditional cancellation provision under which cancellation triggers an obligation by the reporting entity, or an affiliate of the reporting entity, to enter into a new reinsurance contract with the reinsurer, or an affiliate of the reinsurer;
(c) Aggregate stop loss reinsurance coverage;
(d) A unilateral right by either party (or both parties) to commute the reinsurance contract, whether conditional or not, except for such provisions which are only triggered by a decline in the credit status of the other party;
(e) A provision permitting reporting of losses, or payment of losses, less frequently than on a quarterly basis (unless there is no activity during the period); or
(f) Payment schedule, accumulating retentions from multiple years or any features inherently designed to delay timing of the reimbursement to the ceding entity. Yes [] No [X]
- 9.2 Has the reporting entity during the period covered by the statement ceded any risk under any reinsurance contract (or under multiple contracts with the same reinsurer or its affiliates), for which, during the period covered by the statement, it recorded a positive or negative underwriting result greater than 5% of prior year-end surplus as regards policyholders or it reported calendar year written premium ceded or year-end loss and loss expense reserves ceded greater than 5% of prior year-end surplus as regards policyholders; excluding cessions to approved pooling arrangements or to captive insurance companies that are directly or indirectly controlling, controlled by, or under common control with (i) one or more unaffiliated policyholders of the reporting entity, or (ii) an association of which one or more unaffiliated policyholders of the reporting entity is a member where:
(a) The written premium ceded to the reinsurer by the reporting entity or its affiliates represents fifty percent (50%) or more of the entire direct and assumed premium written by the reinsurer based on its most recently available financial statement; or
(b) Twenty-five percent (25%) or more of the written premium ceded to the reinsurer has been retroceded back to the reporting entity or its affiliates in a separate reinsurance contract. Yes [] No [X]
- 9.3 If yes to 9.1 or 9.2, please provide the following information in the Reinsurance Summary Supplemental Filing for General Interrogatory 9:
(a) The aggregate financial statement impact gross of all such ceded reinsurance contracts on the balance sheet and statement of income;
(b) A summary of the reinsurance contract terms and indicate whether it applies to the contracts meeting the criteria in 9.1 or 9.2; and
(c) A brief discussion of management's principle objectives in entering into the reinsurance contract including the economic purpose to be achieved.
- 9.4 Except for transactions meeting the requirements of paragraph 37 of SSAP No. 62R, Property and Casualty Reinsurance, has the reporting entity ceded any risk under any reinsurance contract (or multiple contracts with the same reinsurer or its affiliates) during the period covered by the financial statement, and either:
(a) Accounted for that contract as reinsurance (either prospective or retroactive) under statutory accounting principles ("SAP") and as a deposit under generally accepted accounting principles ("GAAP"); or
(b) Accounted for that contract as reinsurance under GAAP and as a deposit under SAP? Yes [] No [X]
- 9.5 If yes to 9.4, explain in the Reinsurance Summary Supplemental Filing for General Interrogatory 9 (Section D) why the contract(s) is treated differently for GAAP and SAP.
- 9.6 The reporting entity is exempt from the Reinsurance Attestation Supplement under one or more of the following criteria:
(a) The entity does not utilize reinsurance; or, Yes [] No [X]
(b) The entity only engages in a 100% quota share contract with an affiliate and the affiliated or lead company has filed an attestation supplement; or Yes [] No [X]
(c) The entity has no external cessions and only participates in an intercompany pool and the affiliated or lead company has filed an attestation supplement. Yes [X] No []

GENERAL INTERROGATORIES

PART 2 – PROPERTY & CASUALTY INTERROGATORIES

10. If the reporting entity has assumed risks from another entity, there should be charged on account of such reinsurances a reserve equal to that which the original entity would have been required to charge had it retained the risks. Has this been done? Yes No N/A
- 11.1 Has the reporting entity guaranteed policies issued by any other entity and now in force: Yes No
- 11.2 If yes, give full information

- 12.1 If the reporting entity recorded accrued retrospective premiums on insurance contracts on Line 15.3 of the asset schedule, Page 2, state the amount of corresponding liabilities recorded for:
- | | | | |
|---|--|----|--|
| 12.11 Unpaid losses | | \$ | |
| 12.12 Unpaid underwriting expenses (including loss adjustment expenses) | | \$ | |
- 12.2 Of the amount on Line 15.3, Page 2, state the amount that is secured by letters of credit, collateral and other funds? \$ _____
- 12.3 If the reporting entity underwrites commercial insurance risks, such as workers' compensation, are premium notes or promissory notes accepted from its insureds covering unpaid premiums and/or unpaid losses? Yes No N/A
- 12.4 If yes, provide the range of interest rates charged under such notes during the period covered by this statement:
- | | | | | |
|------------|--|--|--|---|
| 12.41 From | | | | % |
| 12.42 To | | | | % |
- 12.5 Are letters of credit or collateral and other funds received from insureds being utilized by the reporting entity to secure premium notes or promissory notes taken by a reporting entity or to secure any of the reporting entity's reported direct unpaid loss reserves, including unpaid losses under loss deductible features of commercial policies? Yes No
- 12.6 If yes, state the amount thereof at December 31 of current year:
- | | | | |
|----------------------------------|--|----|--|
| 12.61 Letters of Credit | | \$ | |
| 12.62 Collateral and other funds | | \$ | |
- 13.1 Largest net aggregate amount insured in any one risk (excluding workers' compensation): \$ _____
- 13.2 Does any reinsurance contract considered in the calculation of this amount include an aggregate limit of recovery without also including a reinstatement provision? Yes No
- 13.3 State the number of reinsurance contracts (excluding individual facultative risk certificates, but including facultative programs, automatic facilities or facultative obligatory contracts) considered in the calculation of the amount. _____
- 14.1 Is the company a cedant in a multiple cedant reinsurance contract? Yes No
- 14.2 If yes, please describe the method of allocating and recording reinsurance among the cedants:
 Premiums and recoverables were allocated pursuant to allocation agreements, including the intercompany pooling agreement.

- 14.3 If the answer to 14.1 is yes, are the methods described in item 14.2 entirely contained in the respective multiple cedant reinsurance contracts? Yes No
- 14.4 If the answer to 14.3 is no, are all the methods described in 14.2 entirely contained in written agreements? Yes No
- 14.5 If the answer to 14.4 is no, please explain:
 N/A

- 15.1 Has the reporting entity guaranteed any financed premium accounts? Yes No
- 15.2 If yes, give full information

- 16.1 Does the reporting entity write any warranty business? Yes No
 If yes, disclose the following information for each of the following types of warranty coverage:
- | | | 1 | 2 | 3 | 4 | 5 |
|------------------|----|---------------------------|-------------------------|---------------------------|----------------------------|--------------------------|
| | | Direct Losses
Incurred | Direct Losses
Unpaid | Direct Written
Premium | Direct Premium
Unearned | Direct Premium
Earned |
| 16.11 Home | \$ | | | | | |
| 16.12 Products | \$ | | | | | |
| 16.13 Automobile | \$ | | | | | |
| 16.14 Other* | \$ | | | | | |

* Disclose type of coverage: _____

GENERAL INTERROGATORIES

PART 2 – PROPERTY & CASUALTY INTERROGATORIES

- 17.1 Does the reporting entity include amounts recoverable on unauthorized reinsurance in Schedule F – Part 3 that is exempt from the statutory provision for unauthorized reinsurance? Yes [] No [X]
- Incurred but not reported losses on contracts in force prior to July 1, 1984, and not subsequently renewed are exempt from the statutory provision for unauthorized reinsurance. Provide the following information for this exemption:
- | | |
|---|----------|
| 17.11 Gross amount of unauthorized reinsurance in Schedule F – Part 3
exempt from the statutory provision for unauthorized reinsurance | \$ _____ |
| 17.12 Unfunded portion of Interrogatory 17.11 | \$ _____ |
| 17.13 Paid losses and loss adjustment expenses portion of Interrogatory 17.11 | \$ _____ |
| 17.14 Case reserves portion of Interrogatory 17.11 | \$ _____ |
| 17.15 Incurred but not reported portion of Interrogatory 17.11 | \$ _____ |
| 17.16 Unearned premium portion of Interrogatory 17.11 | \$ _____ |
| 17.17 Contingent commission portion of Interrogatory 17.11 | \$ _____ |
- 18.1 Do you act as a custodian for health savings accounts? Yes [] No [X]
- 18.2 If yes, please provide the amount of custodial funds held as of the reporting date. \$ _____
- 18.3 Do you act as an administrator for health savings accounts? Yes [] No [X]
- 18.4 If yes, please provide the balance of the funds administered as of the reporting date. \$ _____
19. Is the reporting entity licensed or chartered, registered, qualified, eligible or writing business in at least two states? Yes [X] No []
- 19.1 If no, does the reporting entity assume reinsurance business that covers risks residing in at least one state other than the state of domicile of the reporting entity? Yes [] No [] N/A [X]

FIVE – YEAR HISTORICAL DATA

Show amounts in whole dollars only, no cents; show percentages to one decimal place, i.e., 17.6.

	1	2	3	4	5
	2022	2021	2020	2019	2018
Gross Premiums Written (Page 8, Part 1B, Cols. 1, 2 & 3)					
1. Liability lines (Lines 11, 16, 17, 18, & 19)	208,220,071	262,248,191	272,252,515	282,374,967	267,199,494
2. Property lines (Lines 1, 2, 9, 12, 21 & 26)	114,609,602	136,976,509	134,138,668	137,674,454	134,469,489
3. Property and liability combined lines (Lines 3, 4, 5, 8, 22 & 27)	4,693,334	3,433,664	1,951,589	714,171	(255,015)
4. All other lines (Lines 6, 10, 13, 14, 15, 23, 24, 28, 29, 30 & 34)					
5. Nonproportional reinsurance lines (Lines 31, 32 & 33)					
6. Total (Line 35)	327,523,007	402,658,364	408,342,772	420,763,592	401,413,968
Net Premiums Written (Page 8, Part 1B, Col. 6)					
7. Liability lines (Lines 11, 16, 17, 18, & 19)					
8. Property lines (Lines 1, 2, 9, 12, 21 & 26)					
9. Property and liability combined lines (Lines 3, 4, 5, 8, 22 & 27)					
10. All other lines (Lines 6, 10, 13, 14, 15, 23, 24, 28, 29, 30 & 34)					
11. Nonproportional reinsurance lines (Lines 31, 32 & 33)					
12. Total (Line 35)					
Statement of Income (Page 4)					
13. Net underwriting gain (loss) (Line 8)					
14. Net investment gain (loss) (Line 11)	1,550,309	1,662,145	1,773,281	1,891,753	1,114,265
15. Total other income (Line 15)	(1,670)	(1,802)	(1,875)	3,154	7,914
16. Dividends to policyholders (Line 17)					
17. Federal and foreign income taxes incurred (Line 19)	210,420	266,409	239,749	250,277	(520,866)
18. Net income (Line 20)	1,338,219	1,393,934	1,531,657	1,644,630	1,643,045
Balance Sheet Lines (Pages 2 and 3)					
19. Total admitted assets excluding protected cell business (Page 2, Line 26, Col. 3)	131,682,601	128,961,928	127,712,514	130,305,824	133,037,557
20. Premiums and considerations (Page 2, Col. 3)					
20.1 In course of collection (Line 15.1)	(12,864)	581,436			
20.2 Deferred and not yet due (Line 15.2)					
20.3 Accrued retrospective premiums (Line 15.3)					
21. Total liabilities excluding protected cell business (Page 3, Line 26)	55,894,890	54,500,436	54,627,956	58,709,922	62,986,283
22. Losses (Page 3, Line 1)					
23. Loss adjustment expenses (Page 3, Line 3)					
24. Unearned premiums (Page 3, Line 9)					
25. Capital paid up (Page 3, Lines 30 & 31)	4,500,000	4,500,000	4,500,000	4,500,000	4,500,000
26. Surplus as regards policyholders (Page 3, Line 37)	75,787,711	74,461,492	73,084,558	71,595,902	70,051,272
Cash Flow (Page 5)					
27. Net cash from operations (Line 11)	(21,347,528)	6,697,388	2,564,748	616,148	2,897,089
Risk-Based Capital Analysis					
28. Total adjusted capital	75,787,711	74,461,492	73,084,558	71,595,902	70,051,272
29. Authorized control level risk-based capital	738,082	1,162,370	867,052	882,242	931,097
Percentage Distribution of Cash, Cash Equivalents and Invested Assets (Page 2, Col. 3) (Item divided by Page 2, Line 12, Col. 3) x 100.0					
30. Bonds (Line 1)	87.6	98.3	98.0	95.7	88.2
31. Stocks (Lines 2.1 & 2.2)					
32. Mortgage loans on real estate (Lines 3.1 and 3.2)					
33. Real estate (Lines 4.1, 4.2 & 4.3)					
34. Cash, cash equivalents and short-term investments (Line 5)	5.3	0.1	0.3	2.8	1.3
35. Contract loans (Line 6)					
36. Derivatives (Line 7)					
37. Other invested assets (Line 8)					
38. Receivables for securities (Line 9)	1.5				
39. Securities lending reinvested collateral assets (Line 10)	5.6	1.6	1.8	1.5	10.5
40. Aggregate write-ins for invested assets (Line 11)					
41. Cash, cash equivalents and invested assets (Line 12)	100.0	100.0	100.0	100.0	100.0
Investments in Parent, Subsidiaries and Affiliates					
42. Affiliated bonds, (Sch. D, Summary, Line 12, Col. 1)					
43. Affiliated preferred stocks (Sch. D, Summary, Line 18, Col. 1)					
44. Affiliated common stocks (Sch. D, Summary, Line 24, Col. 1)					
45. Affiliated short-term investments (subtotals included in Schedule DA Verification, Col. 5, Line 10)					
46. Affiliated mortgage loans on real estate					
47. All other affiliated					
48. Total of above Lines 42 to 47					
49. Total investment in parent included in Lines 42 to 47 above					
50. Percentage of investments in parent, subsidiaries and affiliates to surplus as regards policyholders (Line 48 above divided by Page 3, Col. 1, Line 37 x 100.0)					

FIVE – YEAR HISTORICAL DATA (Continued)

	1	2	3	4	5
	2022	2021	2020	2019	2018
Capital and Surplus Accounts (Page 4)					
51. Net unrealized capital gains (losses) (Line 24)					
52. Dividends to stockholders (Line 35)					
53. Change in surplus as regards policyholders for the year (Line 38)	1,326,219	1,376,934	1,488,657	1,544,630	750,045
Gross Losses Paid (Page 9, Part 2, Cols. 1 & 2)					
54. Liability lines (Lines 11, 16, 17, 18, & 19)	206,775,606	161,612,036	159,039,175	180,596,343	165,011,065
55. Property lines (Lines 1, 2, 9, 12, 21 & 26)	88,552,620	111,508,429	64,844,050	84,295,196	80,841,031
56. Property and liability combined lines (Lines 3, 4, 5, 8, 22 & 27)	3,120,709	4,255,143	1,575,286	1,839,457	8,272,456
57. All other lines (Lines 6, 10, 13, 14, 15, 23, 24, 28, 29, 30 & 34)					
58. Nonproportional reinsurance lines (Lines 31, 32 & 33)					
59. Total (Line 35)	298,448,935	277,375,608	225,458,511	266,730,996	254,124,552
Net Losses Paid (Page 9, Part 2, Col. 4)					
60. Liability lines (Lines 11, 16, 17, 18, & 19)					
61. Property lines (Lines 1, 2, 9, 12, 21 & 26)					
62. Property and liability combined lines (Lines 3, 4, 5, 8, 22 & 27)					
63. All other lines (Lines 6, 10, 13, 14, 15, 23, 24, 28, 29, 30 & 34)					
64. Nonproportional reinsurance lines (Lines 31, 32 & 33)					
65. Total (Line 35)					
Operating Percentages (Page 4) (Item divided by Page 4, Line 1) x 100.0					
66. Premiums earned (Line 1)	100.0	100.0	100.0	100.0	100.0
67. Losses incurred (Line 2)					
68. Loss expenses incurred (Line 3)					
69. Other underwriting expenses incurred (Line 4)					
70. Net underwriting gain (loss) (Line 8)					
Other Percentages					
71. Other underwriting expenses to net premiums written (Page 4, Lines 4 + 5 - 15 divided by Page 8, Part 1B, Col. 6, Line 35 x 100.0)					
72. Losses and loss expenses incurred to premiums earned (Page 4, Lines 2 + 3 divided by Page 4, Line 1 x 100.0)					
73. Net premiums written to policyholders' surplus (Page 8, Part 1B, Col. 6, Line 35 divided by Page 3, Line 37, Col. 1 x 100.0)					
One Year Loss Development (\$000 omitted)					
74. Development in estimated losses and loss expenses incurred prior to current year (Schedule P, Part 2-Summary, Line 12, Col. 11)					
75. Percent of development of losses and loss expenses incurred to policyholders' surplus of prior year end (Line 74 above divided by Page 4, Line 21, Col. 1 x 100.0)					
Two Year Loss Development (\$000 omitted)					
76. Development in estimated losses and loss expenses incurred 2 years before the current year and prior year (Schedule P, Part 2-Summary, Line 12, Col. 12)					
77. Percent of development of losses and loss expenses incurred to reported policyholders' surplus of second prior year end (Line 76 above divided by Page 4, Line 21, Col. 2 x 100.0)					

NOTE: If a party to a merger, have the two most recent years of this exhibit been restated due to a merger in compliance with the disclosure

Yes [] No []

requirements of SSAP No. 3, Accounting Changes and Correction of Errors?

If no, please explain:

.....

NONE **Schedule P - Part 1 - Summary**

NONE **Schedule P - Part 2, 3, 4 - Summary**

SCHEDULE T - EXHIBIT OF PREMIUMS WRITTEN Allocated By States and Territories

States, Etc.	1	Gross Premiums, Including Policy and Membership Fees Less Return Premiums and Premiums on Policies Not Taken		4	5	6	7	8	9
		Active Status (a)	2						
		Direct Premiums Written	Direct Premiums Earned	Dividends Paid or Credited to Policyholders on Direct Business	Direct Losses Paid (Deducting Salvage)	Direct Losses Incurred	Direct Losses Unpaid	Finance and Service Charges Not Included in Premiums	Direct Premium Written for Federal Purchasing Groups (Included in Col. 2)
1. Alabama	AL	L	(407)	(1,804)		149,065	77,512	6,589,914	
2. Alaska	AK	L	(358)	(57,155)		199,831	(183,557)	9,132,155	
3. Arizona	AZ	L	(572)	(5,542)		622,104	(23,124)	9,319,464	
4. Arkansas	AR	L	(168)	609		19,730	19,057	1,760,303	
5. California	CA	L	(282,695)	(2,633,981)	13,742	7,497,309	3,732,740	96,839,595	
6. Colorado	CO	L	(7,406)	2,679		61,317	(29,449)	4,228,660	
7. Connecticut	CT	L	(2,054)	(6,423)		869,130	829,461	10,447,522	
8. Delaware	DE	L	1,099	(632)		93,025	15,292	2,487,849	
9. District of Columbia	DC	L	(1,782)	(2,237)			(756)	654,003	
10. Florida	FL	L	10,793	4,309	5	1,058,442	(524,912)	15,558,103	
11. Georgia	GA	L	(845)	(5,670)		583,665	(420,619)	7,610,340	
12. Hawaii	HI	L	(144)	(144)		(221,175)	(458,466)	381,905	
13. Idaho	ID	L	(70)	(296)		35,020	37,689	1,998,537	
14. Illinois	IL	L	(2,769)	(12,044)		103,640	323,876	17,966,676	
15. Indiana	IN	L	(475)	(2,458)		381,146	48,209	7,684,048	
16. Iowa	IA	L	(1,747)	(2,725)		1,077	45,757	3,035,374	
17. Kansas	KS	L	(355)	(4,692)		88,505	(152,563)	4,258,120	
18. Kentucky	KY	L	(312)	(2,055)		108,702	(564,058)	6,438,623	
19. Louisiana	LA	L	(264)	347		132,695	(174,576)	4,791,521	
20. Maine	ME	L	(162)	(906)		84,210	5,408	1,844,454	
21. Maryland	MD	L	23,937	20,611		320,584	9,422	4,755,972	
22. Massachusetts	MA	L	1,788,667	1,683,365		605,947	(76,556)	8,926,902	136,839
23. Michigan	MI	L	(7,512)	(15,816)		2,415	(183,755)	9,002,072	
24. Minnesota	MN	L	(12,482)	(27,030)		1,737,704	(935,157)	18,942,451	
25. Mississippi	MS	L	(284)	17		49,165	(156,256)	2,682,653	
26. Missouri	MO	L	(12,851)	(14,626)		244,408	413,657	6,536,032	
27. Montana	MT	L	(279)	(424)		72,768	(97,275)	2,572,759	
28. Nebraska	NE	L	(99)	(1,306)		93,872	(47,710)	3,180,764	
29. Nevada	NV	L	(223)	(17,797)		76,866	53,077	1,639,498	
30. New Hampshire	NH	L	(70,175)	(71,019)	(1,948)	125,111	21,218	3,263,691	
31. New Jersey	NJ	L	322,608,854	357,509,097		272,832,997	240,625,616	340,601,670	2,860,584
32. New Mexico	NM	L	(116)	42		56,098	90,329	2,638,804	
33. New York	NY	L	60,468	(57,975)	(4,974)	1,909,836	317,636	23,395,302	
34. North Carolina	NC	L	(767)	17,941		443,248	239,071	8,251,579	
35. North Dakota	ND	L		58			8,138	57,738	
36. Ohio	OH	L		(1,557)			(9,586)	86,641	
37. Oklahoma	OK	L	11,517	7,086		154,669	10,003	11,403,231	
38. Oregon	OR	L	(252)	(85)		286,137	52,072	5,298,049	
39. Pennsylvania	PA	L	15,789	1,584	(779)	1,145,220	(582,770)	16,249,232	
40. Rhode Island	RI	L	(865)	(806)		261,358	273,302	793,644	
41. South Carolina	SC	L	12,873	12,097		68,735	(480,404)	3,134,187	
42. South Dakota	SD	L	(43)	(79)		(10,767)	(277,032)	2,724,633	
43. Tennessee	TN	L	15,564	12,800		319,504	64,964	17,261,861	
44. Texas	TX	L	(920)	(59,476)		1,200,171	(303,801)	29,046,777	
45. Utah	UT	L	19,850	22,979		197,501	(19,015)	2,424,609	
46. Vermont	VT	L	(43)	(3,755)		202,918	133,066	3,723,697	
47. Virginia	VA	L	3,004,894	2,438,637		937,374	1,104,782	5,052,383	199,723
48. Washington	WA	L		(3,564)			(64,960)	434,075	
49. West Virginia	WV	L					7,804	1,150,256	
50. Wisconsin	WI	L	343,649	328,372		2,775,777	5,216,387	41,438,242	
51. Wyoming	WY	L					(662)	2,263	
52. American Samoa	AS	N							
53. Guam	GU	N							
54. Puerto Rico	PR	N					13	1,341	
55. U.S. Virgin Islands	VI	L							
56. Northern Mariana Islands	MP	N							
57. Canada	CAN	N							
58. Aggregate Other Alien	OT	X X X					10	1,030	
59. Totals	(a)	53	327,508,458	359,048,551	6,046	297,977,054	248,008,549	789,701,204	3,197,146

DETAILS OF WRITE-INS									
58001. ZZZ Other Alien		X X X					10	1,030	
58002.		X X X							
58003.		X X X							
58998. Summary of remaining write-ins for Line 58 from overflow page		X X X							
58999. Totals (Lines 58001 through 58003 plus 58998) (Line 58 above)		X X X					10	1,030	

Explanation of basis of allocation of premiums by states, etc.

(a) Active Status Counts

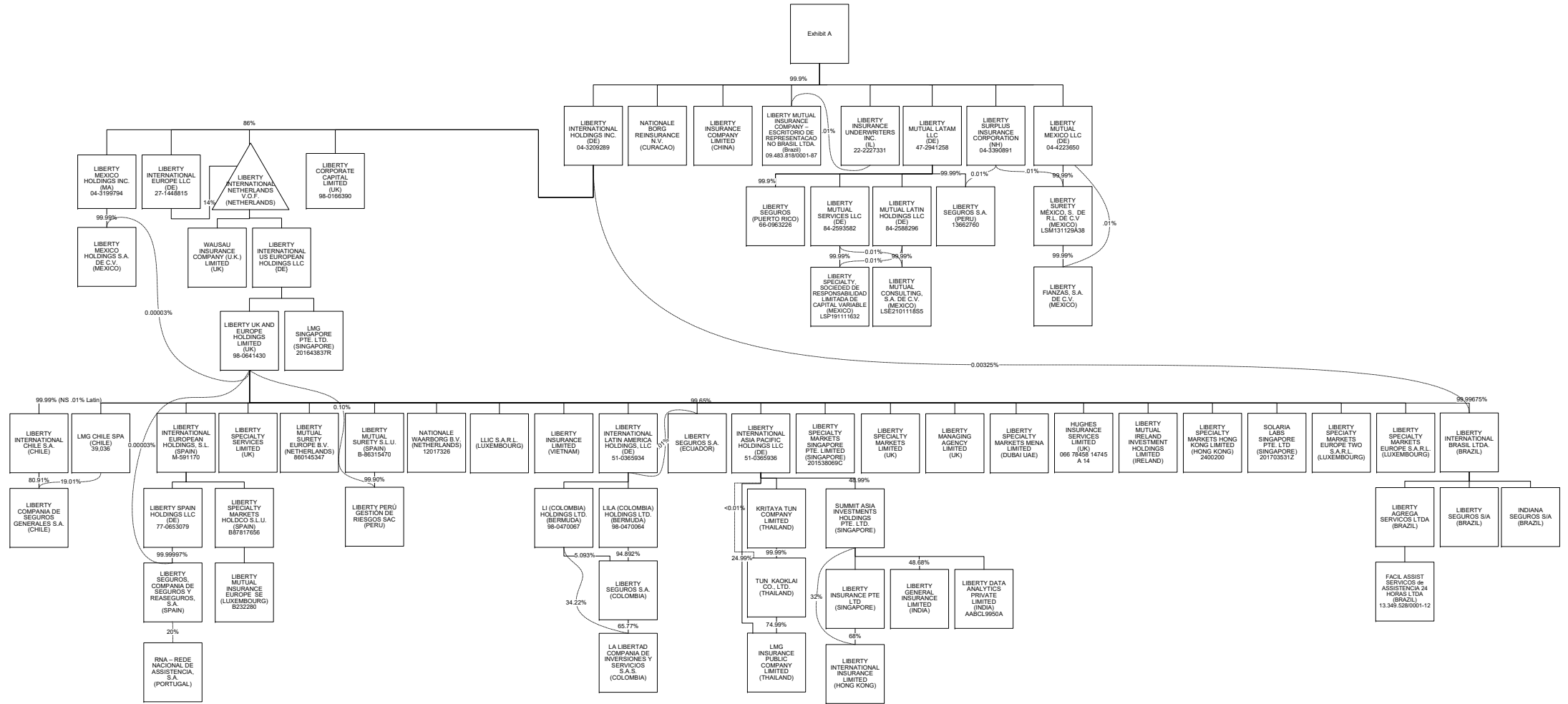
1. L - Licensed or Chartered - Licensed insurance carrier or domiciled RRG	53
2. R - Registered - Non-domiciled RRGs	_____
3. E - Eligible - Reporting entities eligible or approved to write surplus lines in the state	_____
4. Q - Qualified - Qualified or accredited reinsurer	_____
5. D - Domestic Surplus Lines Insurer (DSL) - Reporting entities authorized to write surplus lines in the state of domicile	_____
6. N - None of the above - Not allowed to write business in the state (other than their state of domicile - See DSLI)	4

Explanation of basis of allocation of premiums by states, etc.

*Location of coverage - Fire, Allied Lines, Homeowners Multi Peril, Commercial Multi Peril, Earthquake, Boiler and Machinery	*Location of Court or Obligor - Surety
*States employee's main work place - Worker's Compensation	*Address of Assured - Other Accident and Health
*Location of Principal place of garaging of each individual car - Auto Liability, Auto Physical Damage	*Location of Properties covered - Burglary and Theft
*Principal Location of business or location of coverage - Liability other than Auto, Fidelity, Warranty	*Principal Location of Assured - Ocean Marine, Credit
*Point of origin of shipment or principal location of assured - Inland Marine	*Primary residence of Assured- Aircraft (all perils)
*State in which employees regularly work - Group Accident and Health	

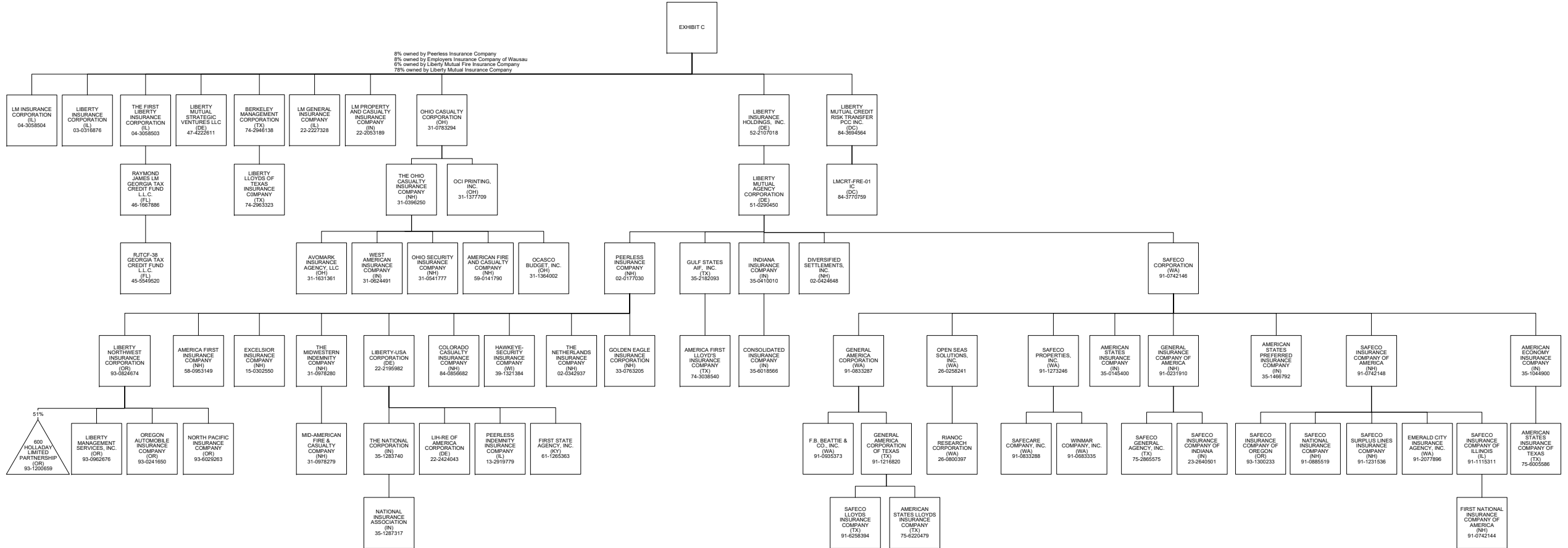
SCHEDULE Y - INFORMATION CONCERNING ACTIVITIES OF INSURER MEMBERS OF A HOLDING COMPANY GROUP

PART 1 - ORGANIZATIONAL CHART



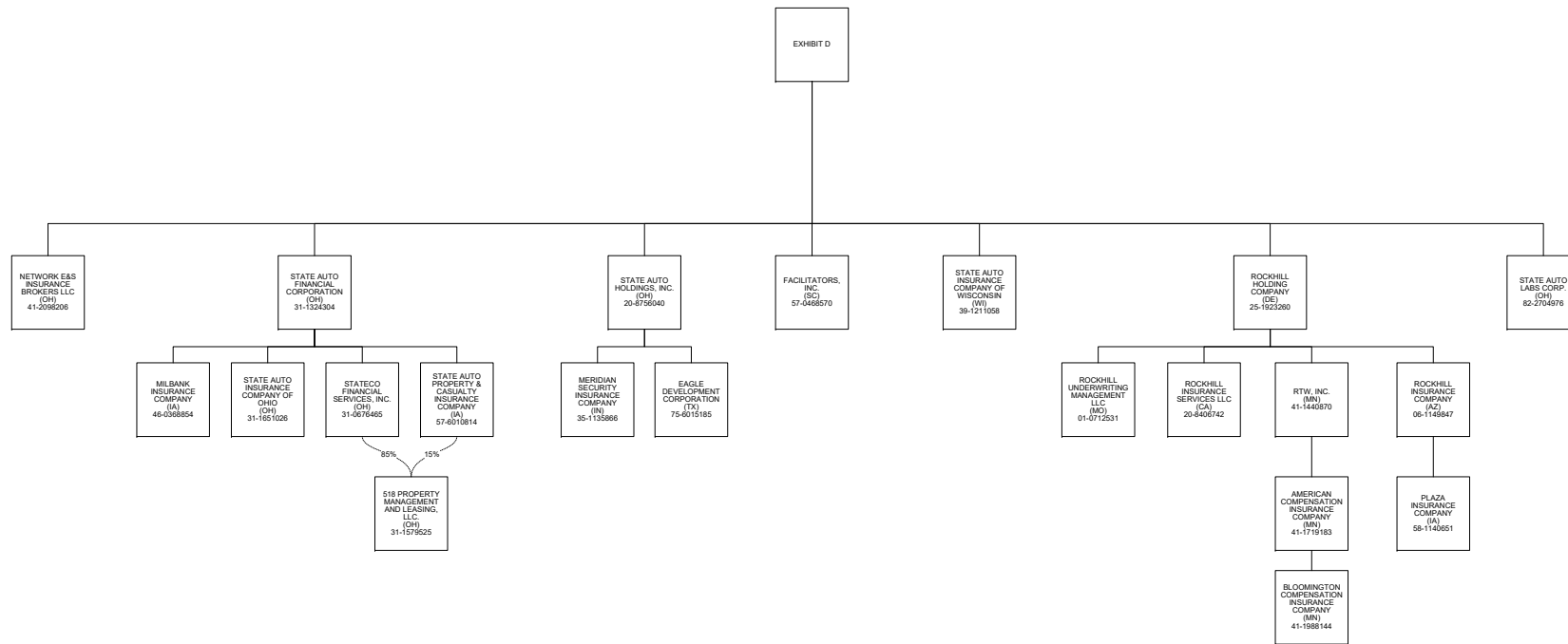
SCHEDULE Y - INFORMATION CONCERNING ACTIVITIES OF INSURER MEMBERS OF A HOLDING COMPANY GROUP

PART 1 - ORGANIZATIONAL CHART



SCHEDULE Y - INFORMATION CONCERNING ACTIVITIES OF INSURER MEMBERS OF A HOLDING COMPANY GROUP

PART 1 - ORGANIZATIONAL CHART



OVERFLOW PAGE FOR WRITE-INS
