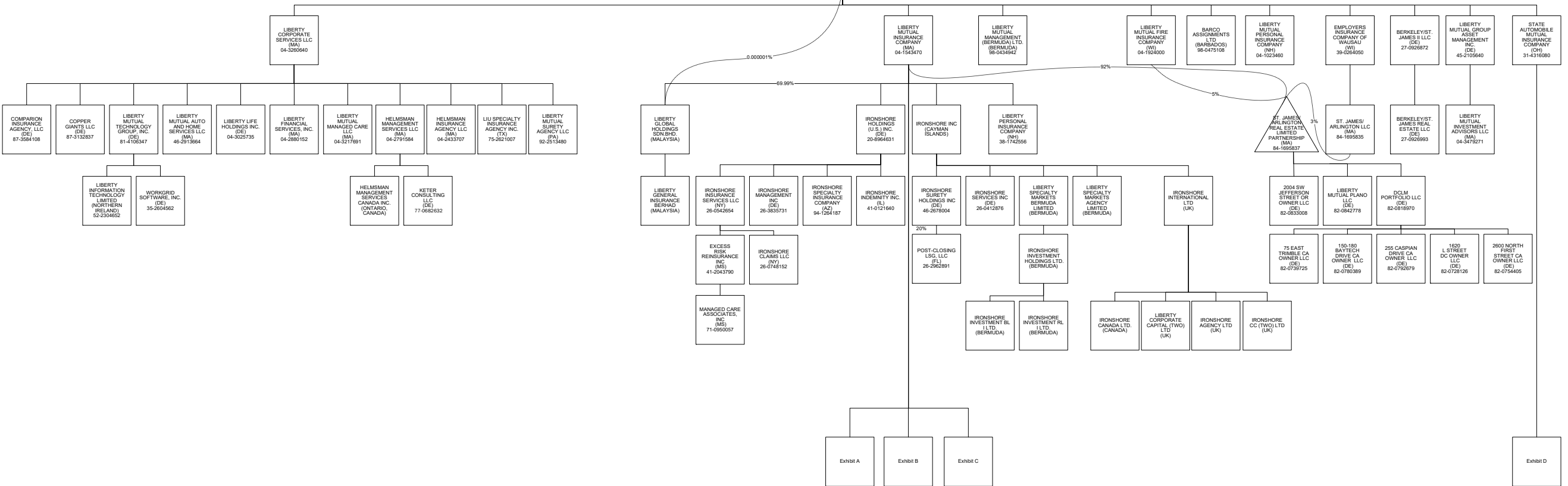
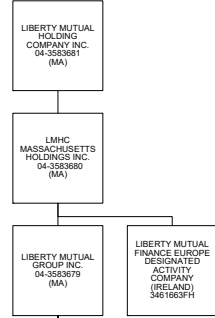
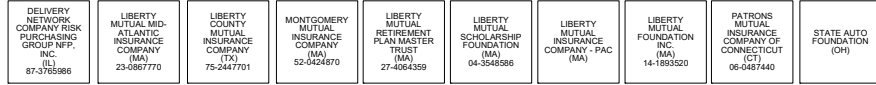
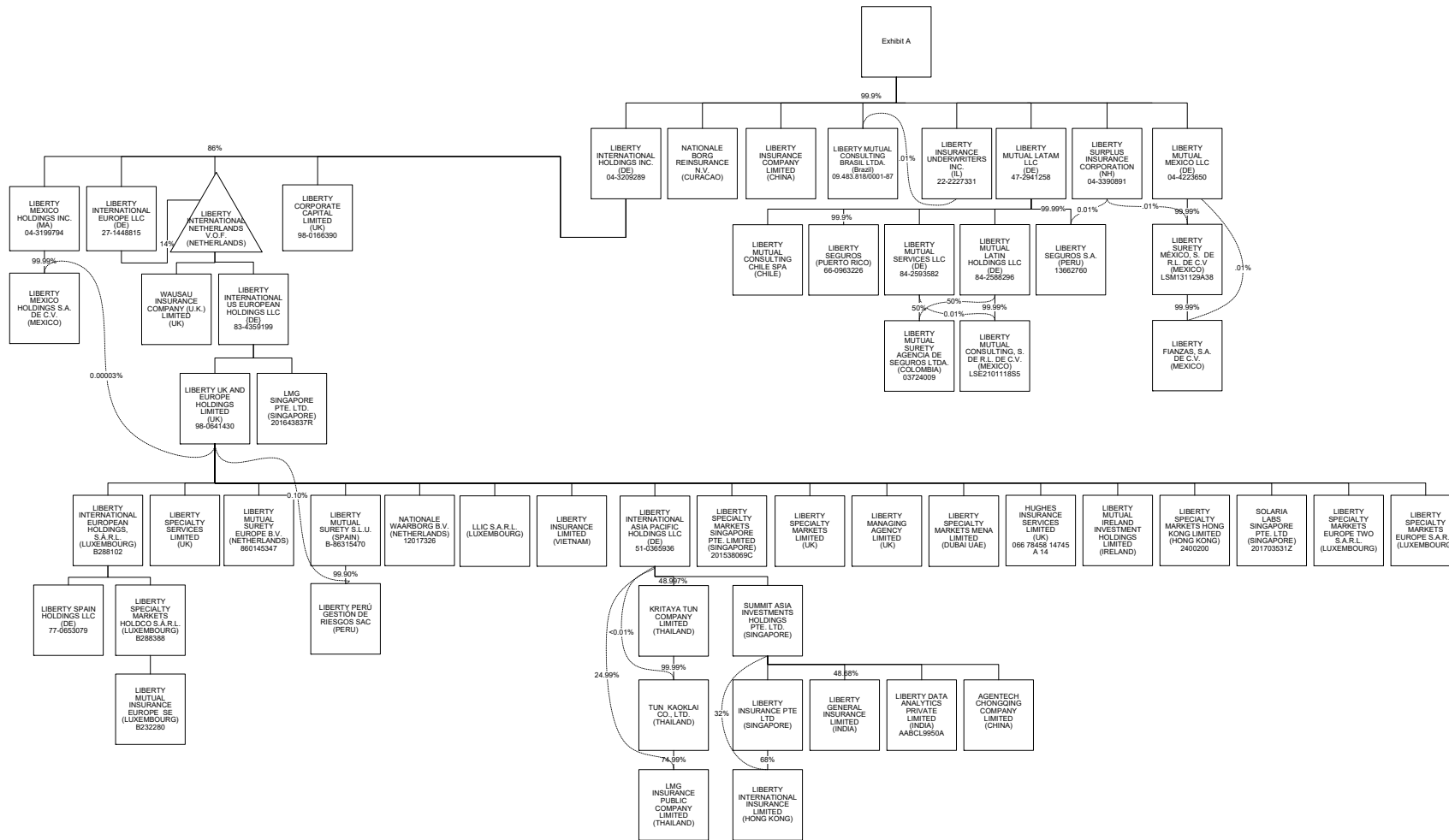


STATEMENT AS OF SEPTEMBER 30, 2024
 SCHEDULE Y - PART 1 - ORGANIZATIONAL CHART



STATEMENT AS OF SEPTEMBER 30, 2024
 SCHEDULE Y - PART 1 - ORGANIZATIONAL CHART



STATEMENT AS OF SEPTEMBER 30, 2024
 SCHEDULE Y - PART 1 - ORGANIZATIONAL CHART

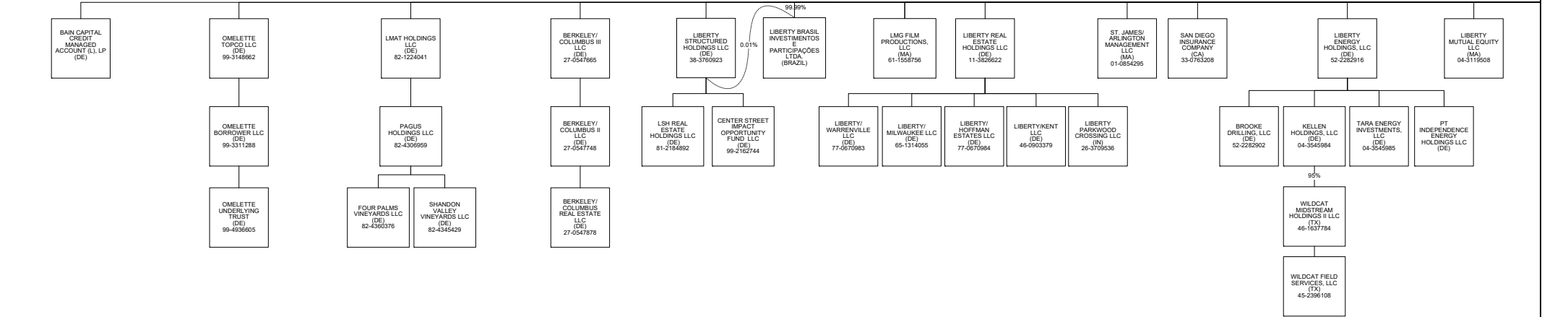
EXHIBIT B

40% owned by Liberty Mutual Insurance Company
 20% owned by Peerless Insurance Company
 15% owned by Safeco Insurance Company of America
 10% owned by Employers Insurance Company of Wausau
 10% owned by Liberty Mutual Fire Insurance Company
 10% owned by The Ohio Casualty Insurance Company

45% owned by Liberty Mutual Insurance Company
 25% owned by Peerless Insurance Company
 10% owned by Employers Insurance Company of Wausau
 10% owned by Liberty Mutual Fire Insurance Company
 10% owned by The Ohio Casualty Insurance Company

30% owned by Liberty Mutual Insurance Company
 30% owned by Peerless Insurance Company
 10% owned by Liberty Mutual Fire Insurance Company
 10% owned by Employers Insurance Company of Wausau
 10% owned by Liberty Mutual Fire Insurance Company
 10% owned by The Ohio Casualty Insurance Company

45% owned by Peerless Insurance Company
 20% owned by Liberty Mutual Insurance Company
 25% owned by Liberty Mutual Fire Insurance Company
 15% owned by Safeco Insurance Company of America

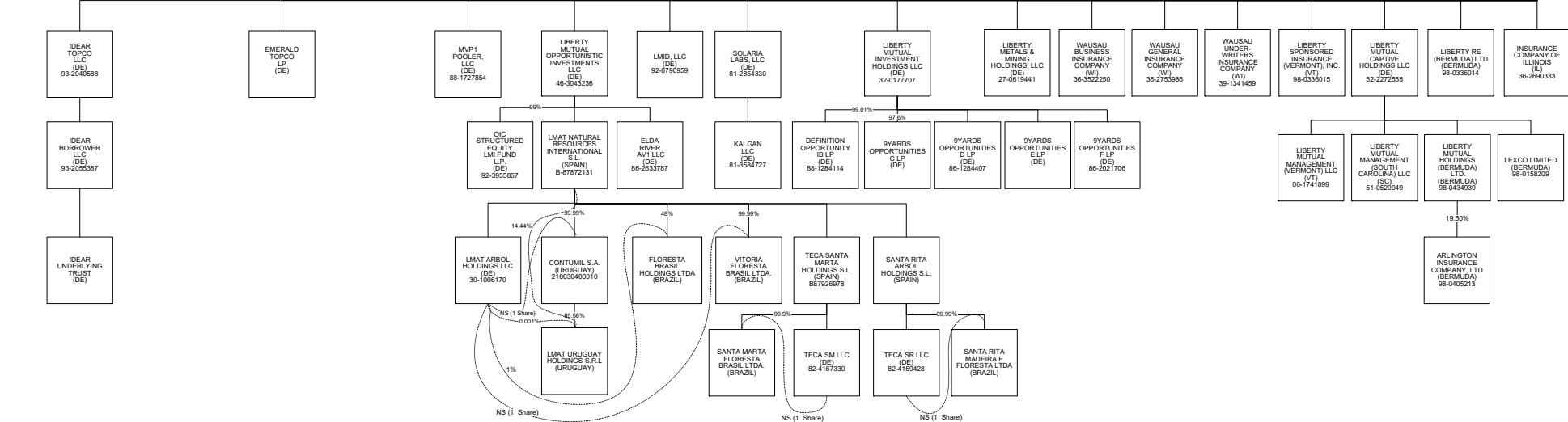


40% owned by Liberty Mutual Insurance Company
 40% owned by Peerless Insurance Company
 10% owned by Safeco Insurance Company of America
 10% owned by The Ohio Casualty Insurance Company

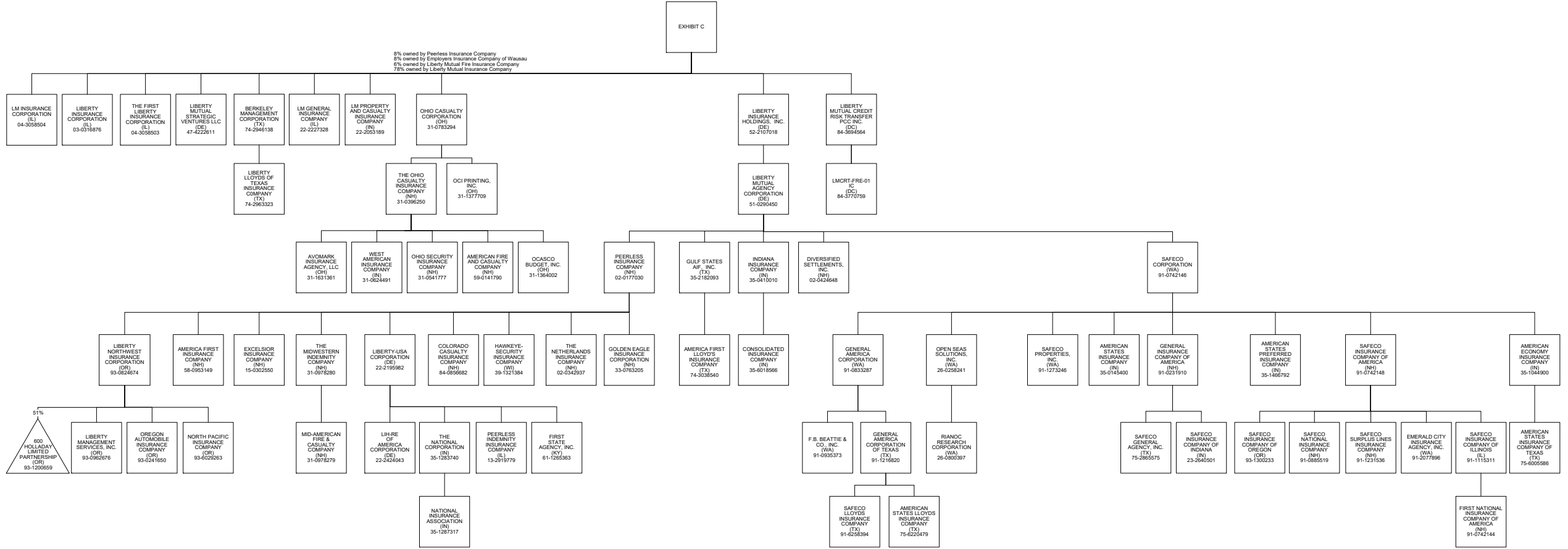
40% owned by Liberty Mutual Insurance Company
 20% owned by Peerless Insurance Company
 10% owned by Employers Insurance Company of Wausau
 10% owned by Liberty Mutual Fire Insurance Company
 10% owned by The Ohio Casualty Insurance Company
 10% owned by Safeco Insurance Company of America

40% owned by Liberty Mutual Insurance Company
 20% owned by Peerless Insurance Company
 10% owned by Employers Insurance Company of Wausau
 10% owned by Liberty Mutual Fire Insurance Company
 10% owned by The Ohio Casualty Insurance Company
 10% owned by Safeco Insurance Company of America

40% owned by Liberty Mutual Insurance Company
 10% owned by Liberty Mutual Fire Insurance Company
 10% owned by Employers Insurance Company of Wausau
 10% owned by The Ohio Casualty Insurance Company
 25% owned by Peerless Insurance Company
 8% owned by Safeco Insurance Company of America



STATEMENT AS OF SEPTEMBER 30, 2024
 SCHEDULE Y - PART 1 - ORGANIZATIONAL CHART



STATEMENT AS OF SEPTEMBER 30, 2024
 SCHEDULE Y - PART 1 - ORGANIZATIONAL CHART

